



# New NSW Lithium Project

**ASX: SLB**

**INVESTOR  
PRESENTATION**

March 2023

# Disclaimer



## General information only

This Presentation contains general background information and summary information about Stellar Metals Limited (ACN 651 636 065) ("Stellar Metals") and its activities as at the date of this Presentation. Stellar Metals does not undertake to provide any additional or update information, whether as a result of new information, future events or results or otherwise. By receiving the Presentation, you acknowledge and represent to Stellar Metals that you have read, understood and accepted the terms of this disclaimer.

This Presentation is confidential and may not be reproduced, redistributed or passed on, directly or indirectly.

## Sophisticated / professional investors

By accepting and retaining a copy of this Presentation, you warrant that you are sophisticated investor within the meaning of section 708(8) of the Corporations Act 2001 (Cth) or a professional investor within the meaning of section 708(11) of the Corporations Act 2001 (Cth).

## Not an offer

This Presentation is not a prospectus, disclosure document, product disclosure statement or other offering document under Australian law (and will not be lodged with ASIC). This presentation is for information purposes only does not constitute an invitation or an offer to sell or a solicitation of an offer to purchase any security or financial product or service in any jurisdiction. Any offer of securities in Stellar Metals will be made in or accompanied by a copy of a prospectus, and prospective investors should consider the prospectus in deciding whether to acquire securities in Stellar Metals. Any person who wants to acquire securities in Stellar Metals will need to complete the application form that will be in or will accompany the prospectus.

## Not investment advice

The information contained in this Presentation is for information purposes only, the Presentation does not constitute financial product nor investment advice or a recommendation to acquire securities in Stellar Metals (nor does it or will it form part of any contract to acquire securities in Stellar Metals). It has been prepared without taking into account the objectives, financial situation or needs of individuals. Before making an investment in Stellar Metals, an investor or prospective investor should consider whether such an investment is appropriate to their particular investment needs, objectives and financial circumstances, seek legal and taxation advice as appropriate and consult a financial adviser if necessary.

## Forward Looking Statement

This presentation may contain forward-looking statements that are subject to risk factors associated with Stellar Metals' business and proposed operations. Forward looking statements include those containing such words as "anticipate", "estimates", "forecasts", "should", "could", "may", "intends", "will", "expects", "plans" or similar expressions. Such forward-looking statements are not guarantees of future performance and involve known and unknown risks, uncertainties, assumptions and other important factors, many of which are beyond the control of Stellar Metals.

It is believed that the expectations reflected in these statements are reasonable but they may be affected by a range of variables and changes in underlying assumptions which could cause actual results or trends to differ materially. Stellar Metals does not make any representation or warranty as to the accuracy of such statements or assumptions and undue reliance should not be placed on such statements.

Data and amounts shown in this presentation relating to capital costs, operating costs and project timelines are internally generated best estimates only. All such information and data is currently under review as part of Stellar Metals' ongoing development and feasibility studies. Accordingly, Stellar Metals cannot guarantee the accuracy and/or completeness of the figures or data included in the presentation until the feasibility studies are completed.

## No Warranty of Accuracy or Completeness

This presentation has been prepared by Stellar Metals based on information currently available to it. Stellar Metals and its directors, employees and consultants make no representations or warranty, express or implied, as to the fairness, accuracy, completeness or correctness of the information, opinions and conclusions contained in this Presentation. To the maximum extent permitted by law, none of Stellar Metals or its subsidiaries or affiliates or the directors, employees, agents, representatives or advisers of any such party, nor any other person accepts any liability for any loss arising from the use of this presentation or its contents or otherwise arising in connection with it, including without limitation, any liability arising from fault or negligence on the part of Stellar Metals or its subsidiaries or affiliates or the directors, employees, agents, representatives or advisers of any such party.

## Competent Person's Statement

The information in this Presentation that relates to Exploration Results is based on information compiled by Colin Skidmore. Colin Skidmore has sufficient experience, which is relevant to the styles of mineralization and types of deposit under consideration, and to the activities, which he is undertaking. Colin Skidmore is a Member of the Australian Institute for Geoscientists and is a "Competent Person" as defined in the 2012 edition of the 'Australasian Code for Reporting of Exploration Results, Mineral Resources and Ore Reserves'. Colin Skidmore consents to the inclusion of information in this presentation that relates to Exploration Results in the form and context in which it appears.

## JORC – Exploration Targets

It is common practice for a company to comment on and discuss its exploration in terms of target size and type. The information in this Presentation relating to exploration targets should not be misunderstood or misconstrued as an estimate of Mineral Resources or Ore Reserves. Hence the terms Resource(s) or Reserve(s) have not been used in this context. The potential quantity and grade is conceptual in nature, since there has been insufficient work completed to define them beyond exploration targets and that it is uncertain if further exploration will result in the determination of a Mineral Resource.

## WHY INVEST IN STELAR

- New large-scale lithium project near world-class mining infrastructure in NSW
- Stelar leveraging hard-rock lithium expertise and success to expand into exciting new NSW lithium field
- Fully funded for its work programme offering significant leverage to exploration success
- SLB's Market Cap of ~\$10M offers huge potential upside (refer following slide)
- Investment opportunity to get in on the ground floor of the next potential lithium discovery

“Stelar Metals CEO Colin Skidmore and myself worked successfully together at Core Lithium to identify and establish the Finniss Lithium Project, which has recently become the first operating lithium mine in the NT. We are excited about this new project opportunity as we aim to repeat similar success for Stelar shareholders and stakeholders in NSW”

Stephen Biggins, Chairman  
ASX Announcement (16 Feb 2023)

# CORPORATE SNAPSHOT

## BOARD & MANAGEMENT



**Stephen Biggins**

Non-Executive Chairman

- BSc Hons (Geology), MBA.
- 25 years' local and international exploration and discovery experience as a geologist and executive
- **Founder and ex Managing Director of Core Lithium (ASX: CXO), Chairman of Winsome Resources (ASX: WRI)**



**Colin Skidmore**

Chief Executive Officer

- BSc Hons, MAppSc.
- 25 years' experience as an exploration geologist and project manager
- **helped discover the Finnis Lithium project with Stephen at CXO**



**Geoffrey Webster**

Independent Non-Executive Director



**Will Dix**

Independent Non-Executive Director



**Nick Harding**

Company Secretary

## CAPITAL STRUCTURE

Share Price – 1 March 2023

A\$0.20 per share

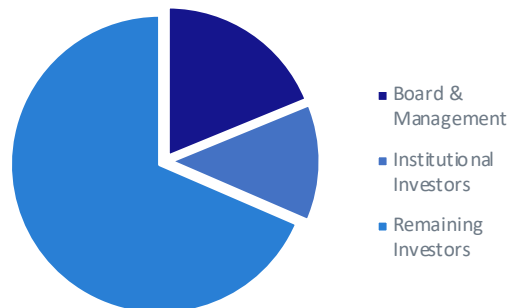
Shares on Issue – 1 March 2023

50.5M

Escrowed Shares

11.2M (12 Months)

## SHAREHOLDING STRUCTURE



Ticker

ASX: SLB

Undiluted Market Cap – 1 March 2023

~\$10M

Cash and Cash Equivalents (Dec 22)

\$4.4M

## SHARE PRICE PERFORMANCE

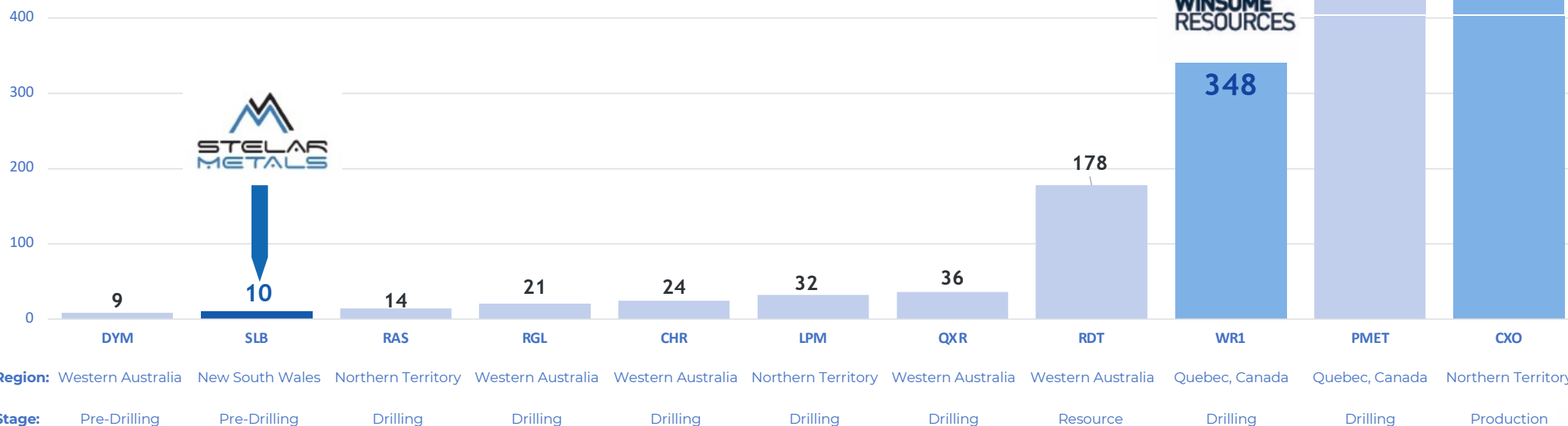


# ASX LITHIUM SECTOR PEER REVIEW

## LITHIUM PEGMATITE PROJECTS IN AUSTRALIA & CANADA

- Low price entry with potential to replicate previous success in value growth
- With \$4m+ in bank, fully funded for initial exploration program with drilling to begin in CY'Q3

### Market Capitalisation (in A\$m)



\*\*Note: Market capitalisations calculations as per 22 February 2023



The background of the slide is a photograph of a desert landscape. In the foreground, there is a dry, reddish-brown field with sparse vegetation. A wire fence with wooden posts runs diagonally across the middle ground. In the background, there are rolling hills and mountains under a clear sky. The image is overlaid with a blue geometric design consisting of several triangular shapes.

# Trident Lithium Project

## New South Wales



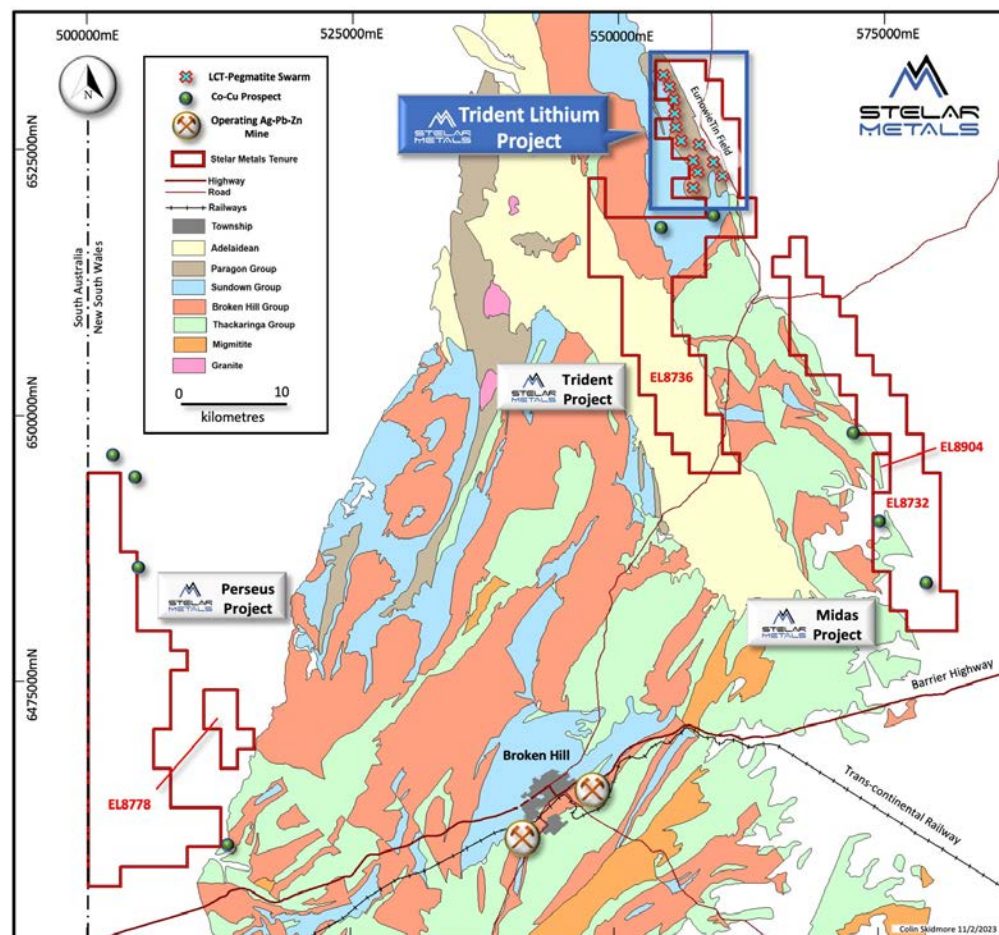
“At this early stage, Stelar’s Trident Lithium Project seems to have similar attributes to the lithium rich pegmatites in the Bynoe Pegmatite Field in the NT. The Trident lithium rich pegmatite field has been worked historically for tin and tantalum, includes tens if not hundreds of pegmatite bodies of significant scale within a large pegmatite field tens of kilometres long and has not yet been drill targeted for lithium.”

Colin Skidmore, CEO  
ASX Announcement (16 Feb 2023)

# TRIDENT LITHIUM PROJECT

- **Historic tin mining area with known LCT-Type Pegmatites that are highly anomalous in Li-Ce-Ta-Sn-Rb**
- SLB acquiring 90% of 4 granted exploration licenses (719km<sup>2</sup>) near Broken Hill NSW for \$1m
- Trident Lithium Project extends over 15m of Strike, with individual pegmatites over 1km in length and up to 100m wide
- Spodumene potential at depth has NEVER been tested by drilling
- Located near world-class mine infrastructure at Broken Hill NSW

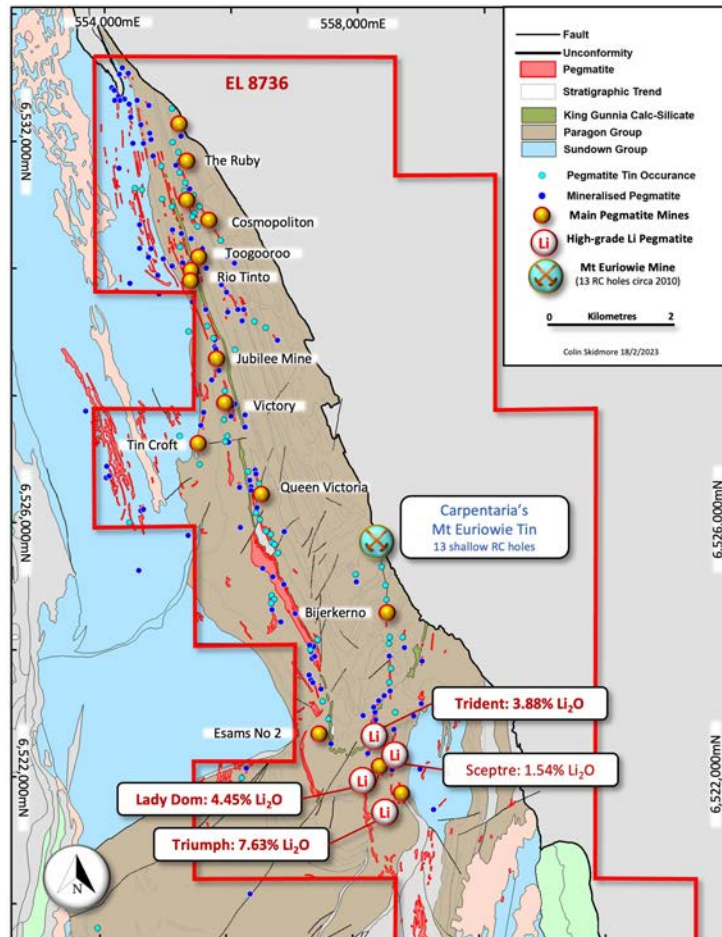
**Stelar has a strong position in a major NSW Pegmatite Province**



*Location of Stelar's tenements and the Trident Lithium Project near Broken Hill in NSW on simplified geology*



# TRIDENT PROJECT: GEOLOGY AND MINERALISATION

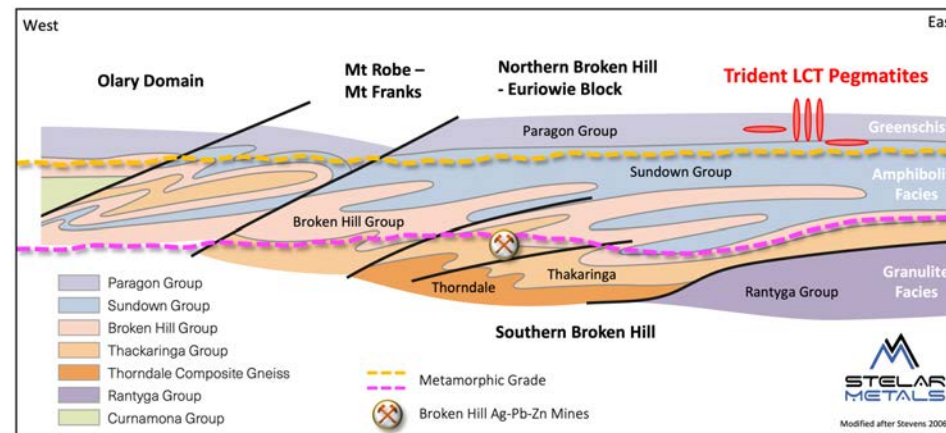


Trident Lithium Project showing distribution of pegmatites and known mineral occurrences

- More than 250 known mineral occurrences that have historically been worked for tin and tantalum over 15 kilometres of strike
- High-grade lithium rockchip sampling in historic tin mines (Lepidico 2016)

**Triumph Prospect**  
**Lady Don Mine**  
**Trident Mine**  
**Sceptre Mine**

**7.63% & 5.96% Li<sub>2</sub>O**  
**4.45% Li<sub>2</sub>O**  
**3.88% & 2.13% Li<sub>2</sub>O**  
**1.54% Li<sub>2</sub>O**



Diagrammatic cross-section showing Broken Hill stratigraphy and metamorphic grade relative to LCT-pegmatites dykes and sills at Trident.



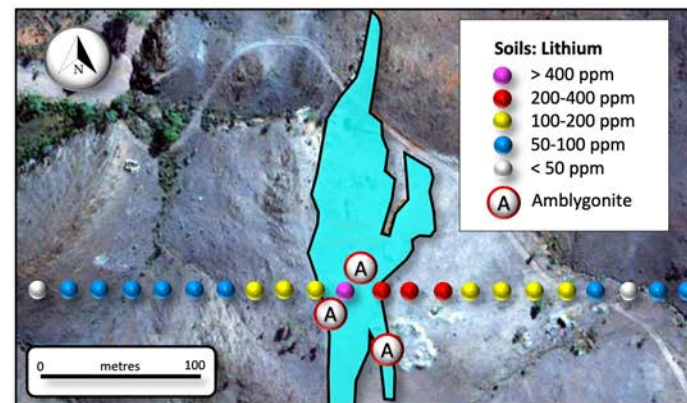
## TRIDENT LITHIUM PROJECT: HISTORIC WORK

**1884:** The Euriowie Tin Field was discovered.

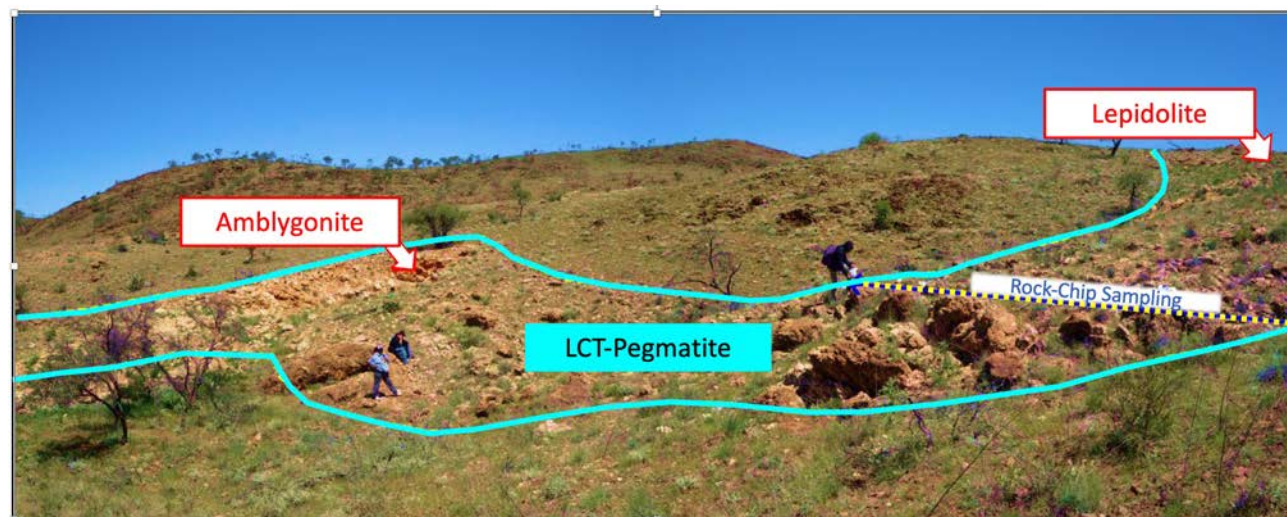
**1956:** Small-scale mining of Amblygonite (lithium phosphate) at Trident.

**2007-2015:** Carpentaria's focus was tin but multiple pegmatites with anomalous Li-Cs-Ta-Sn-Rb were identified.

**2016-2017:** Lepidico were first explorers to focus on lithium –only completed orientation work that confirmed very high-grade lithium at surface and broad Li-Cs-Ta-Sn soil anomalies



*Trident Prospect showing thematic orientation soils on orthoimagery (Lepidico 2016)*



*Triumph Prospect looking SSW showing Lepidico's rockchip sampling in 2016*

## POSITIVE COMPARISON TO GREENBUSHES AND FINNISS

Characteristics	Greenbushes-WA (Talison JV)	Finniss-NT (Core Lithium)	Trident-NSW (Stelar Metals)
Tin production started in the 1800's	✓	✓	✓
Early production from alluvials and then from primary pegmatites	✓	✓	✓
Pegmatites are deformed with low-moderate grade metamorphism	✓	✓	✓
Economic-scale, highly-fractionated, zoned, LCT-type Pegmatites	✓	✓	✓
Pegmatites weathered at surface with lithium depletion	✓	✓	✓
Limited historic exploration for lithium prior to development	✓	✓	✓
Economic lithium discovered after ~100 years of mining	✓	✓	Inaugural Drilling 2023-Q3
Lithium Production	Since 1985	2022	

# EXPLORATION TIMETABLE

## 2023 – Q2

### Mapping & Sampling

- ✓ Systematic mapping and surface sampling over known high-lithium LCT Pegmatites

### Geophysics

- ✓ Acquisition and processing of geophysics to aid mapping of pegmatites at depth

### Drilling Approval

- ✓ Application for drilling approvals with NSW regulators

## 2023 – Q3

### Drilling Program

- ✓ Initial shallow drilling program to map orientation and morphology of the pegmatites at depth and to assess spodumene potential

### Review

- ✓ Extensive review of all technical data to fully inform next program of work around key target areas within the tenement

## Ongoing work

### Follow up programs

- ✓ Follow up deeper RC and diamond drilling programs to quantify lithium grade distribution, mineralogy and metallurgy
- ✓ Systematic exploration of other prospective pegmatites along 15km of strike in the Euriowie Tin Field
- ✓ Expand Lithium Assets

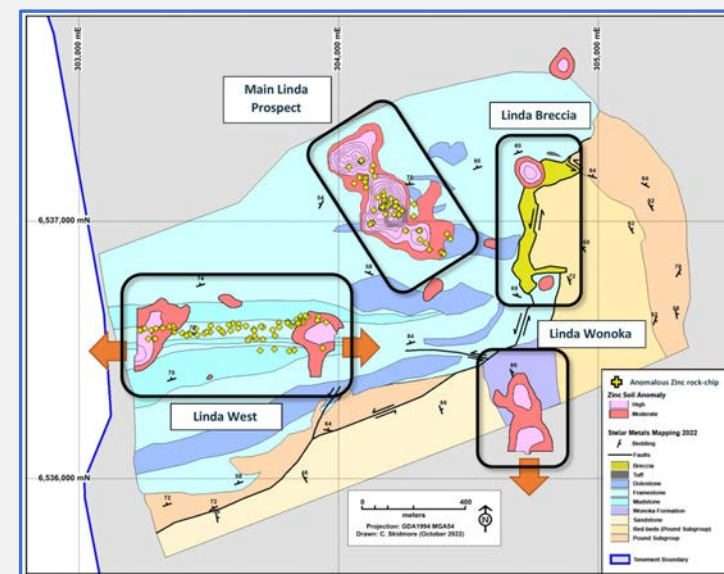
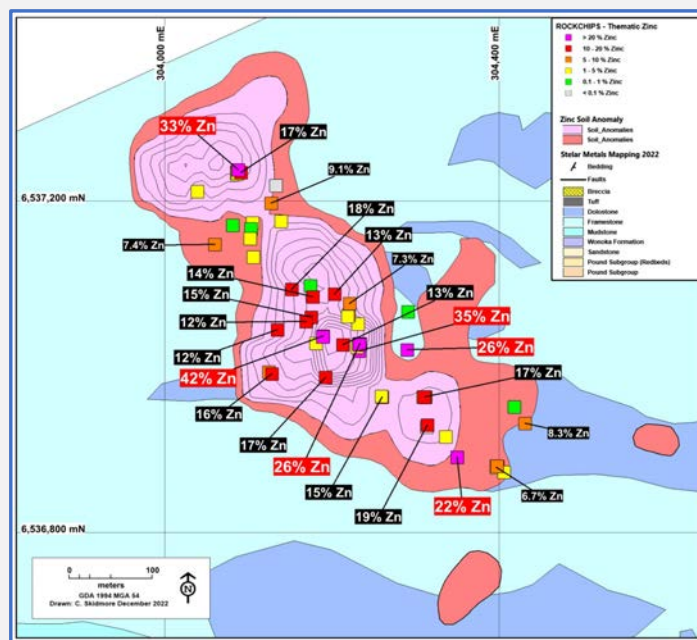
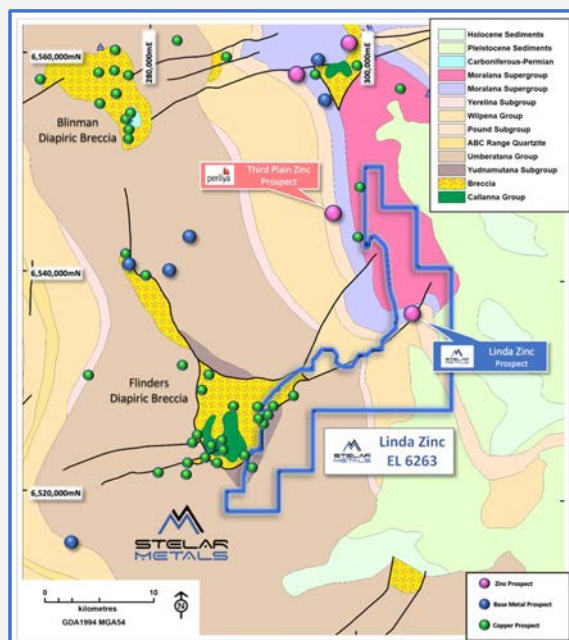
## Other Projects

- Zinc
- Copper
- Cobalt
- Rare Earth Metals





# LINDA ZINC PROJECT



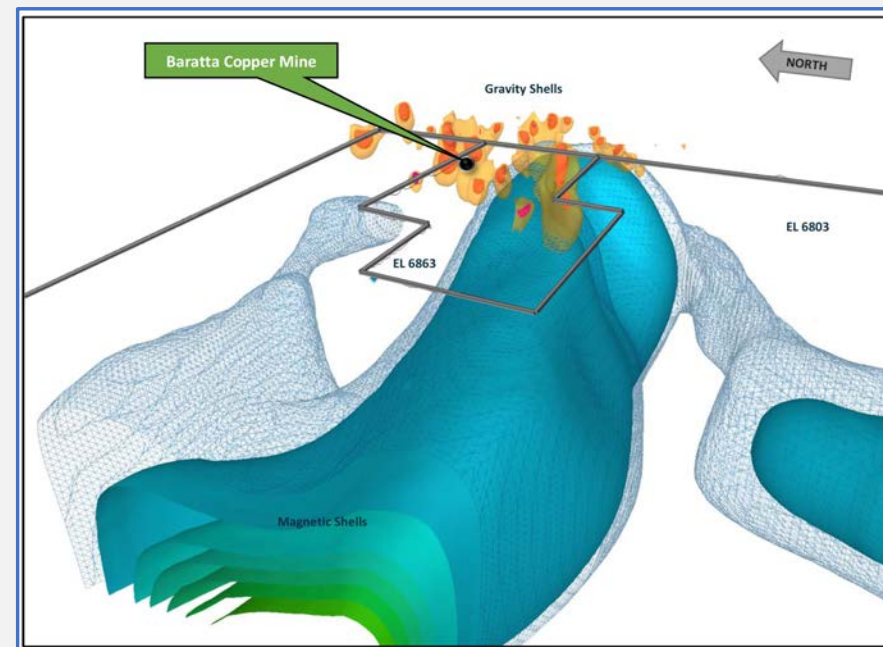
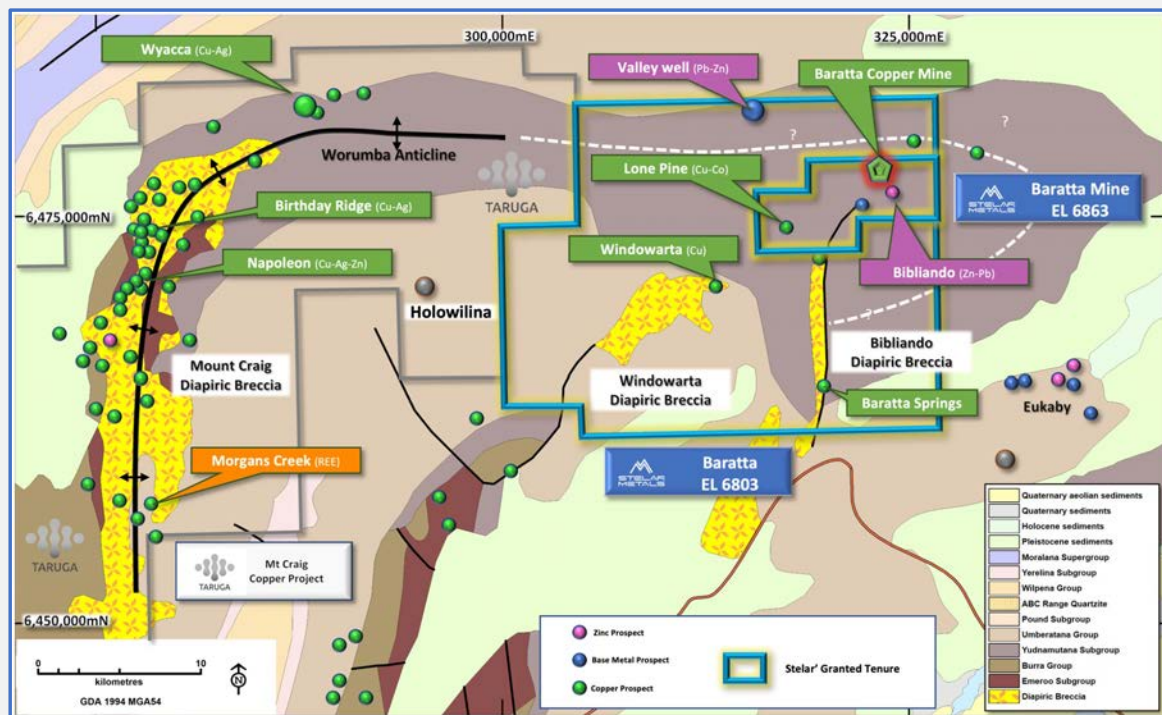
High-grade Zinc hosted by Cambrian Limestones

- Multiple rock-chip samples > 20% Zn
- Direct shipping Ore Grades

- Main high-grade Linda Prospect 600m x 300m
- Additional Zinc Prospects over broad area

Drilling planned for late 2023

# BARATTA COPPER & REE PROJECT



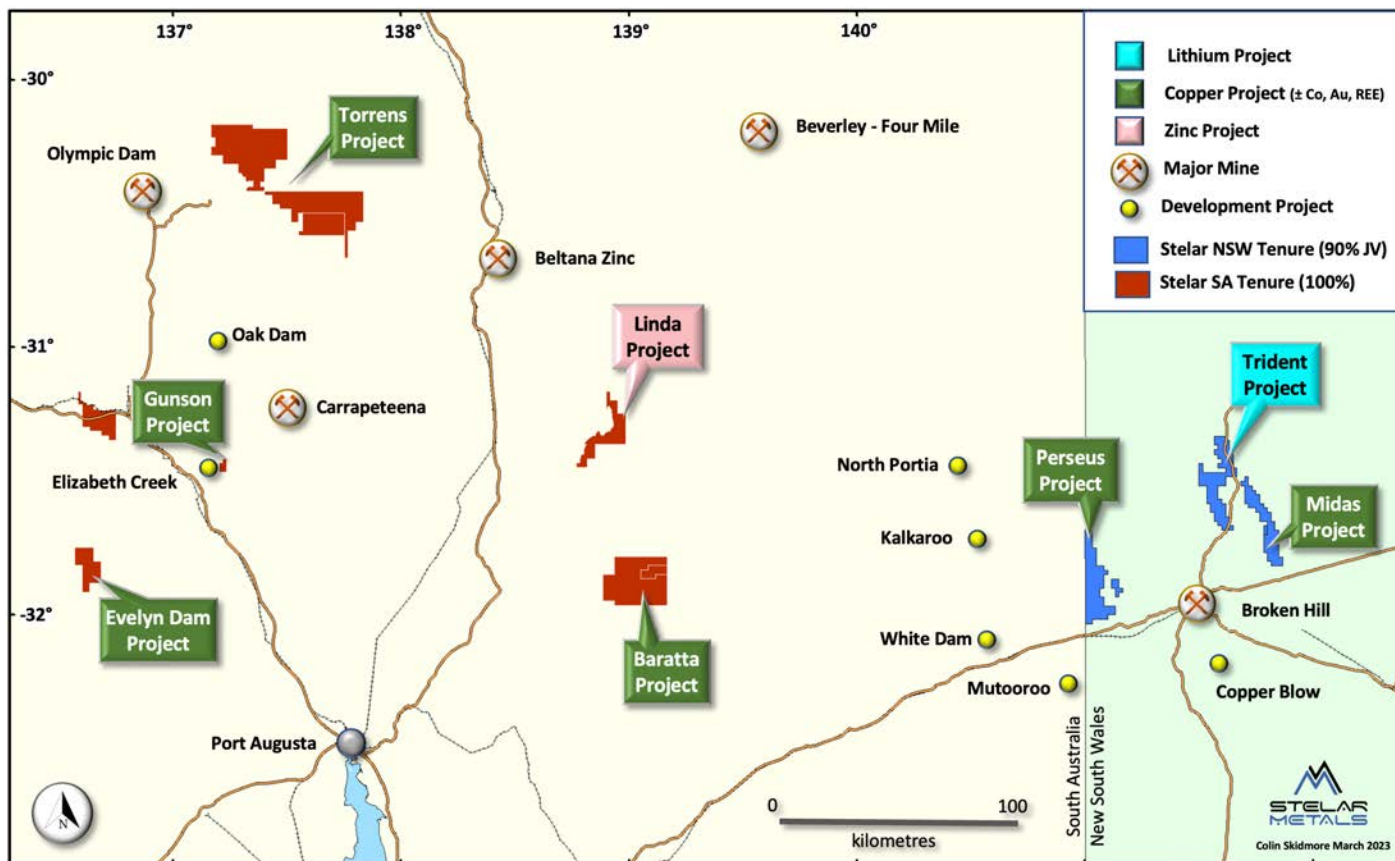
Baratta historic Copper Mine active 1896-1904 along 1.5 kilometres strike length

Multiple copper soil anomalies along parallel structures extending over 7km strike length

- Copper mineralisation underlain by dense and magnetic bodies
- Untested large IP anomaly along strike to the west

Rare Earth potential in Bibliando Diapiric Breccia

## OTHER Cu-Co-Au-REE PROJECTS



**2,755km<sup>2</sup>** of granted exploration licences in SA and NSW

Target Styles:

**Copper – Cobalt**

Midas, Perseus, Trident

**Iron Oxide Copper Gold**

Gunson, Perseus, Torrens, Evelyn Dam

**Sedimentary Copper**

Gunson, Baratta

**Carbonate-hosted Zinc**

Linda

**Rare Earth Elements**

Baratta, Trident

**Portfolio of Critical Metal Projects in world-class mining provinces**



# READY TO DISCOVER HIGHLY PRIZED MINERALS



Stellar Metals is leveraging its expertise and success in hard-rock lithium to repeat success and value growth for shareholders



Well funded exploration program planned for 2023 with \$4m in cash in bank at of Dec 2023



Stellar Metals leveraging hard-rock lithium exploration and development expertise



Highly regarded mining jurisdiction and exposure



Favourable market conditions for battery minerals



Experienced exploration and discovery team





## CONTACT

**Colin Skidmore, Chief Executive Officer**

[c.skidmore@stelarmetals.com.au](mailto:c.skidmore@stelarmetals.com.au)

+61 (0) 467 608 539

**Cameron Low**

Corporate Adviser & Investor Relations

[cameron@cadmon.com.au](mailto:cameron@cadmon.com.au)

[stelarmetals.com.au/](http://stelarmetals.com.au/)