



March 2023  
**Investor Presentation**

ASX: MAN | [mandrakeresources.com.au](http://mandrakeresources.com.au)



# Disclaimers & Disclosures

This presentation has been prepared by Mandrake Resources Limited (MAN). This Presentation is provided on the basis that neither the Company nor its representatives make any warranty (express or implied) as to the accuracy, reliability, relevance or completeness of the material contained in the Presentation and nothing contained in the Presentation is, or may be relied upon as a promise, representation or warranty, whether as to the past or the future. The Company hereby excludes all warranties that can be excluded by law. The Presentation contains material which is predictive in nature and may be affected by inaccurate assumptions or by known and unknown risks and uncertainties, and may differ materially from results ultimately achieved.

This presentation is in summary form and does not purport to be all inclusive or complete. Recipients should conduct their own investigations and perform their own analysis in order to satisfy themselves as to the accuracy and completeness of the information, statements and opinions contained. This is for information purposes only. Neither this nor the information contained in it constitutes an offer, invitation, solicitation or recommendation in relation to any transaction associated with MAN.

To the fullest extent permitted by law, MAN, its officers, employees, related bodies corporate, agents and advisers do not make any representation or warranty, express or implied, as to the currency, accuracy, reliability or completeness of any information, statements, opinions, estimates, forecasts or other representations contained in this presentation. No responsibility for any errors or omissions from this arising out of negligence or otherwise is accepted.

## Competent Persons Statement

The technical information in this announcement complies with the 2012 Edition of the Australasian Code for Reporting of Exploration Results, Mineral Resources and Ore Reserves (JORC Code) and has been compiled and assessed under the supervision of Mr James Allchurch, Managing Director of Mandrake Resources. Mr Allchurch is a Member of the Australian Institute of Geoscientists. He has sufficient experience that is relevant to the style of mineralisation and type of deposit under consideration and to the activity being undertaken to qualify as a Competent Person as defined in the 2012 Edition of the JORC Code. Mr Allchurch consents to the inclusion in this presentation of the matters based on his information in the form and context in which it appears. To the best of the Competent Person's knowledge, the information in the announcement is an accurate representation of the available data and studies.

## Forward Looking Statements

This document may include forward looking statements. Forward looking statements are only predictions and are subject to risk, uncertainties, and assumptions which are outside the control of MAN. Actual values, results or events may be materially different to those expressed or implied in this document. Given these uncertainties, recipients are cautioned not to place reliance on forward looking statements. Any forward looking statements in this document are relevant only at the date of this document. Subject to any continuing obligations under applicable laws, MAN does not undertake any obligation to update or revise any information or any of the forward looking statements in this document or any changes in events, conditions or circumstances on which any such forward looking statement is based.

# Supporting the Energy Revolution in the US

## Decarbonization

Entering the era of the Electric Vehicle

Availability of Energy storage is fundamental

Batteries need Lithium

Albermale forecasting 5x Lithium demand growth from 2022 to 2030<sup>1</sup>

## Ensuring Self-Sufficiency

US government focused on building domestic EV chain

Battery Gigafactories growth

Late 2020's US Lithium demand outstrips current capacity

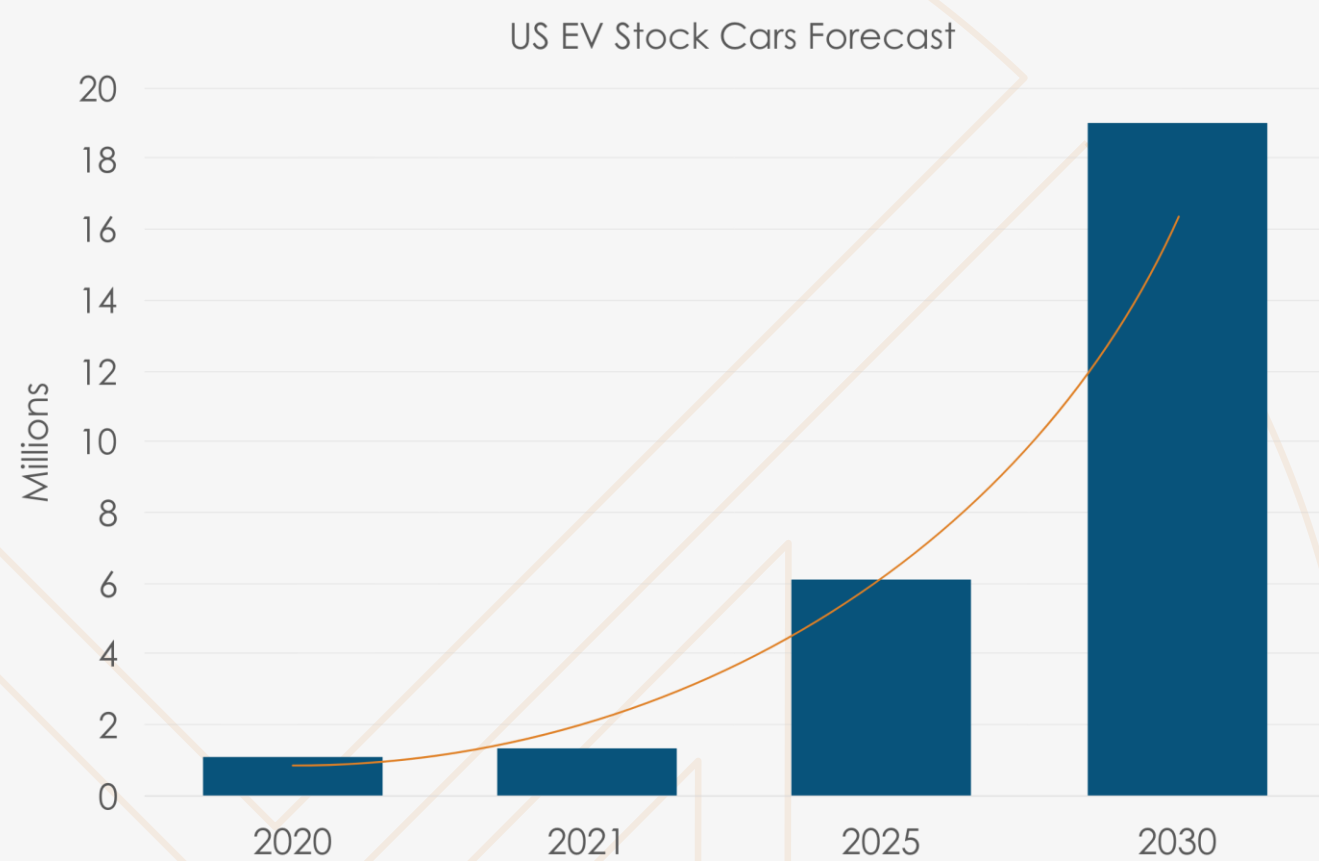
Different US government initiatives support local (partners) Lithium supply



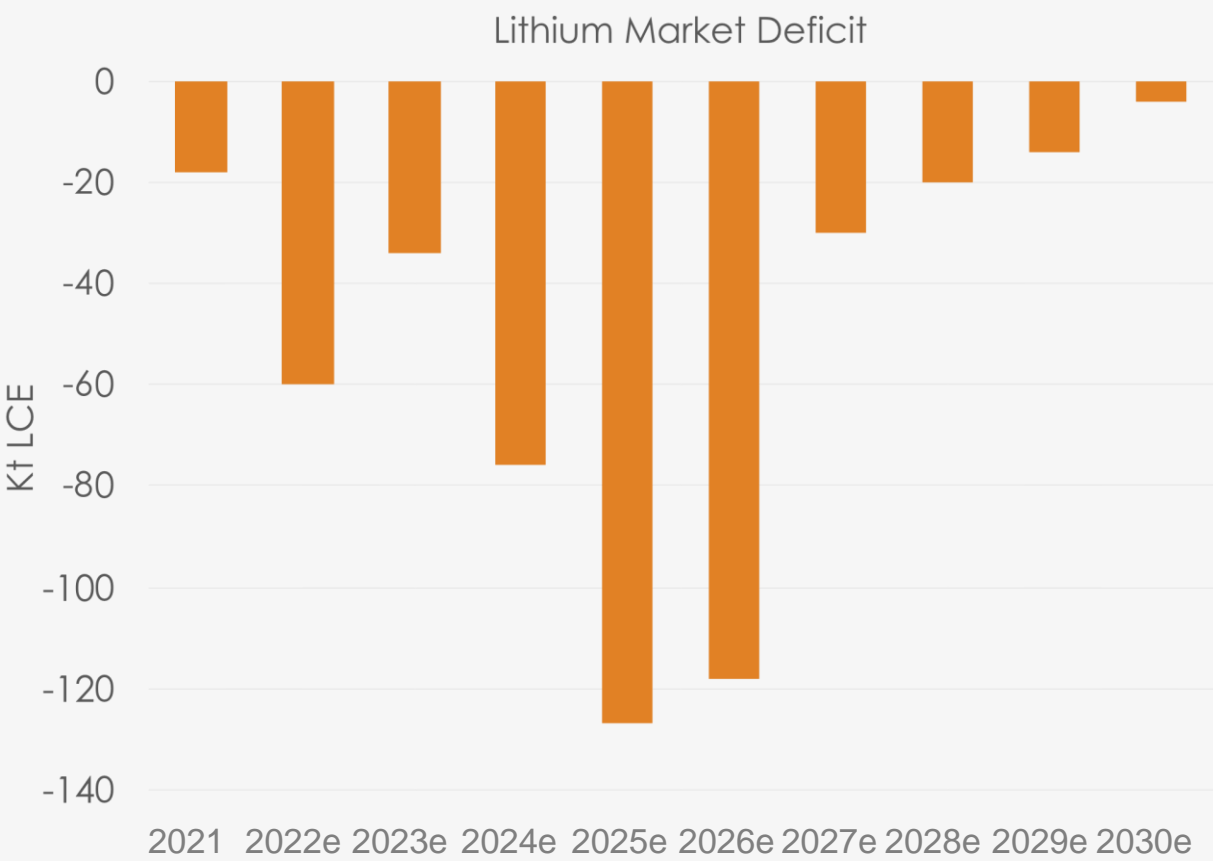


# Lithium Market - Strong Market Fundamentals

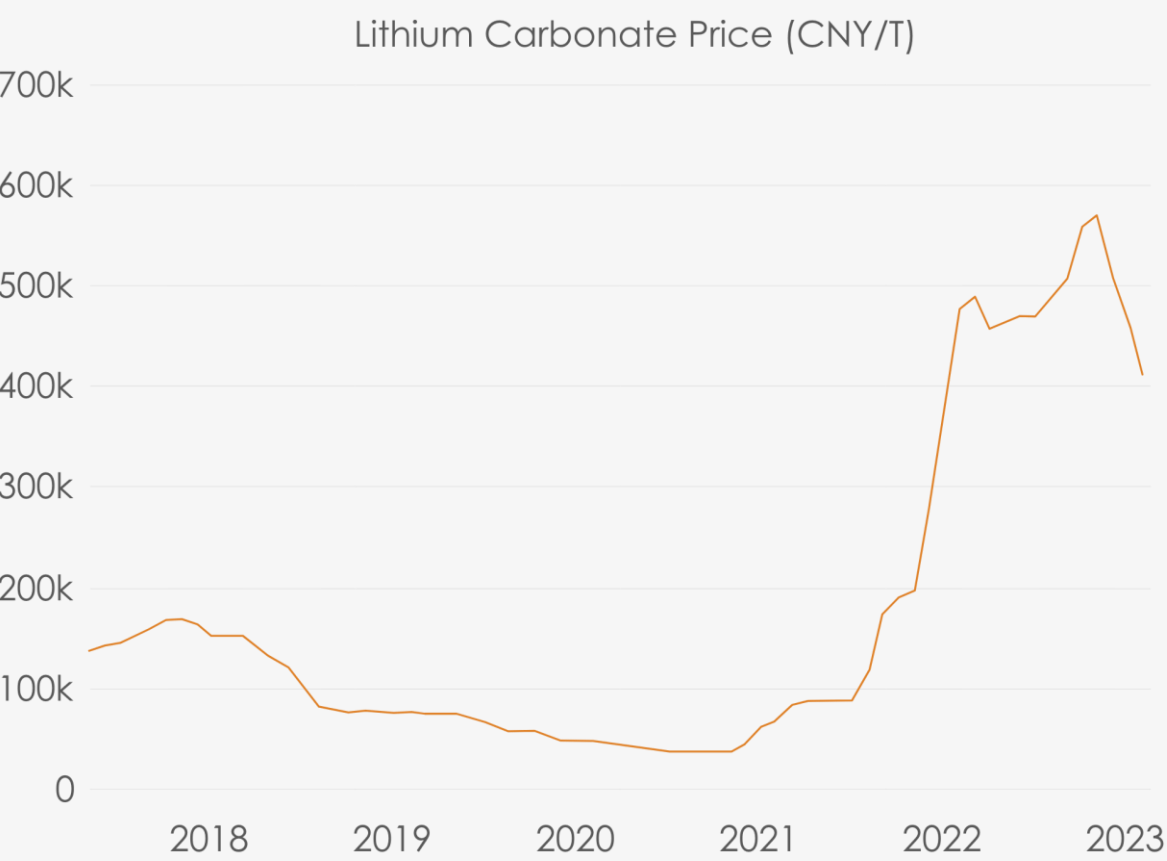
## Exponential EV Growth



## Higher Lithium Demand



## Higher Lithium Prices



# Corporate Snapshot

ASX Code	Shares on Issue	Share price	Market Cap	Cash	Debt
MAN	598m	\$0.052	\$31m	\$19m	NIL

## Overview

Tight capital structure

\$19m in cash

100%-owned Large-scale US lithium asset acquired

Lithium Carbonate Exploration Target imminent

Strong news-flow

## Shareholders

Galan Lithium Limited	5.9%
BNP Paribas Nominees Pty	5.3%
Sandhurst Trustees Ltd	3.4%
James Allchurch	2.4%
Citicorp Nominees Pty Ltd	2.1%
Top 20 Shareholders	36%





# Board of Directors & Management



**James Allchurch**  
Managing Director

Over 20 years' experience in mineral exploration, geotechnical assessment and mining operations. Mr Allchurch has held various Board positions over the previous 15 years and has considerable expertise in the identification and assessment of resource projects over a broad range of commodities.



**Lloyd Flint**  
Non-Executive Chairman

Chartered Accountant with over 25 years' experience in the corporate and financial services arena. He has held a number of management and senior administrative positions as well as providing corporate advisory services as a consultant to corporate clients.



**Roger Fitzhardinge**  
Non-Executive Director

More than 20 years' experience in the exploration and mining industry. Mr Fitzhardinge was instrumental in identifying, acquiring and developing the Jaguar Nickel Sulphide Project for Centaurus Metals (ASX:CTM) propelling the company's market capitalisation more than 20 times to over \$500M.



**Ricardo Garzon**  
Chief Operations Officer

MSc in Energy Economics and Management  
+ 15 years' experience in mineral and oil and gas exploration.  
Has held various Board positions including with ASX-listed Baraka Petroleum Ltd.



**Jake Cammack**  
Exploration Manager USA

MSc in Geochemistry  
Developed a Lithium brine geochemistry database from public and private sources.  
Specialist in using GIS databases to identify and evaluate new prospects.



**Sabina Kraushaar**  
Geologist USA

MSc in Geology  
Expertise in mapping subsurface geology utilizing Petra software.  
Has consulted on numerous oil and gas projects in the Four Corners region.



**Roy Eccles**  
Lithium Brine Expert

MSc in Petroleum Geology  
+35 years' experience as a Geological Consultant.  
Specialist in critical metals, including Lithium confined aquifer brine deposits.  
Internationally recognized for his research on mineral resources related to the evolving green energy technology sector.

# Large-scale US Lithium Brine Project

Mandrake has staked over 23,572 acres of Federal BLM claims in the preceding 4 months

Other Business Agreement (OBA) with Utah State Govt for a further 34,670 acres

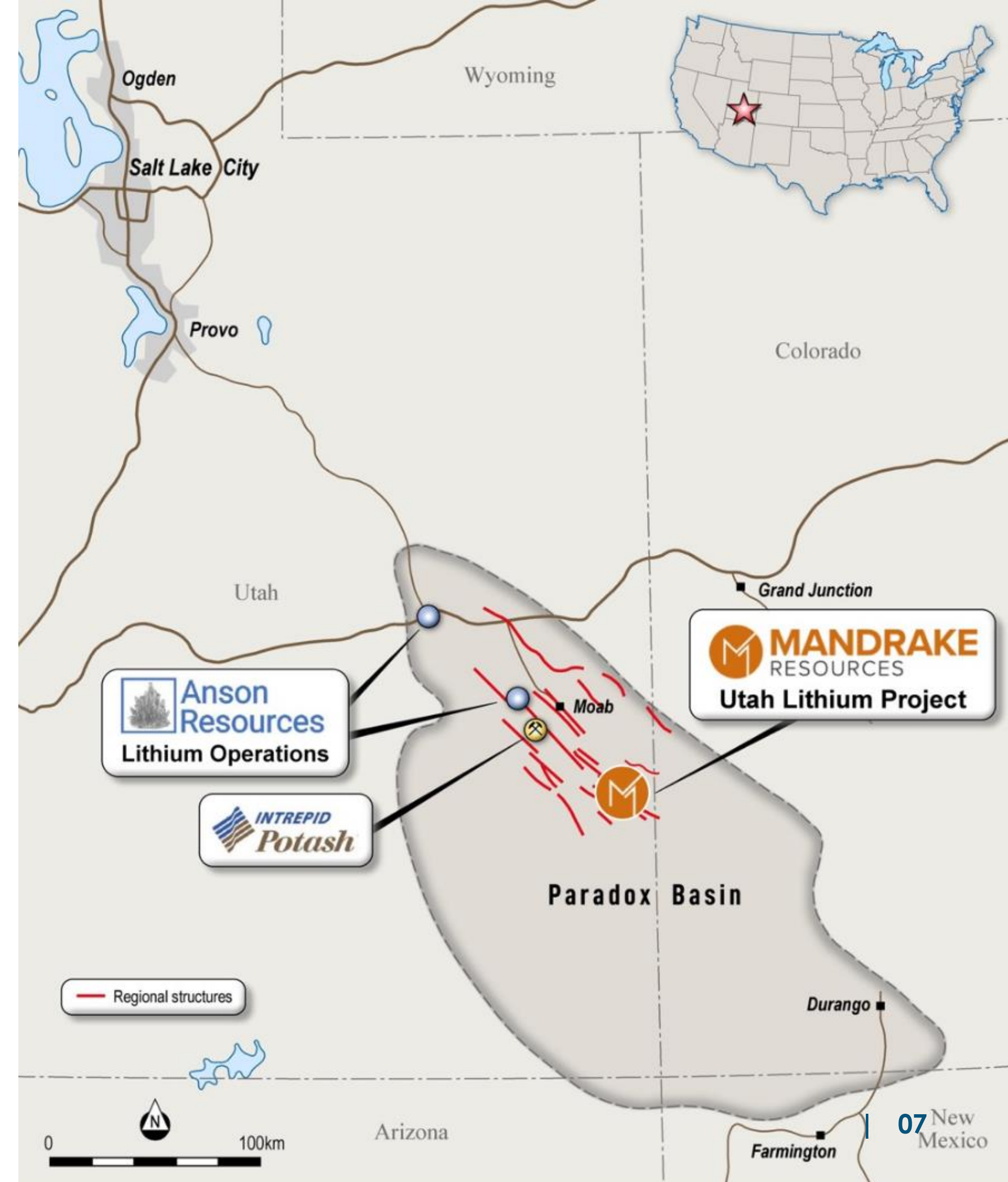
**Commanding total acreage position of 58,242 acres (226km<sup>2</sup>) – and growing**

Prolific oil and gas producing area with hundreds of active, suspended and abandoned wells with potential to access lithium brines – petrolithium

Sampling lithium brines from existing wells is a significant cost saving to drilling

Outstanding infrastructure with nearby rail, road power and water infrastructure in the heart of the US

ASX: MAN | [mandrakeresources.com.au](http://mandrakeresources.com.au)





# Utah Lithium Project - Premier Position

Large-scale acreage position in the 'lithium four corners' Paradox basin in Utah

Oversaturated brines (40% minerals, 60% water) discovered during oil exploration 80 years ago

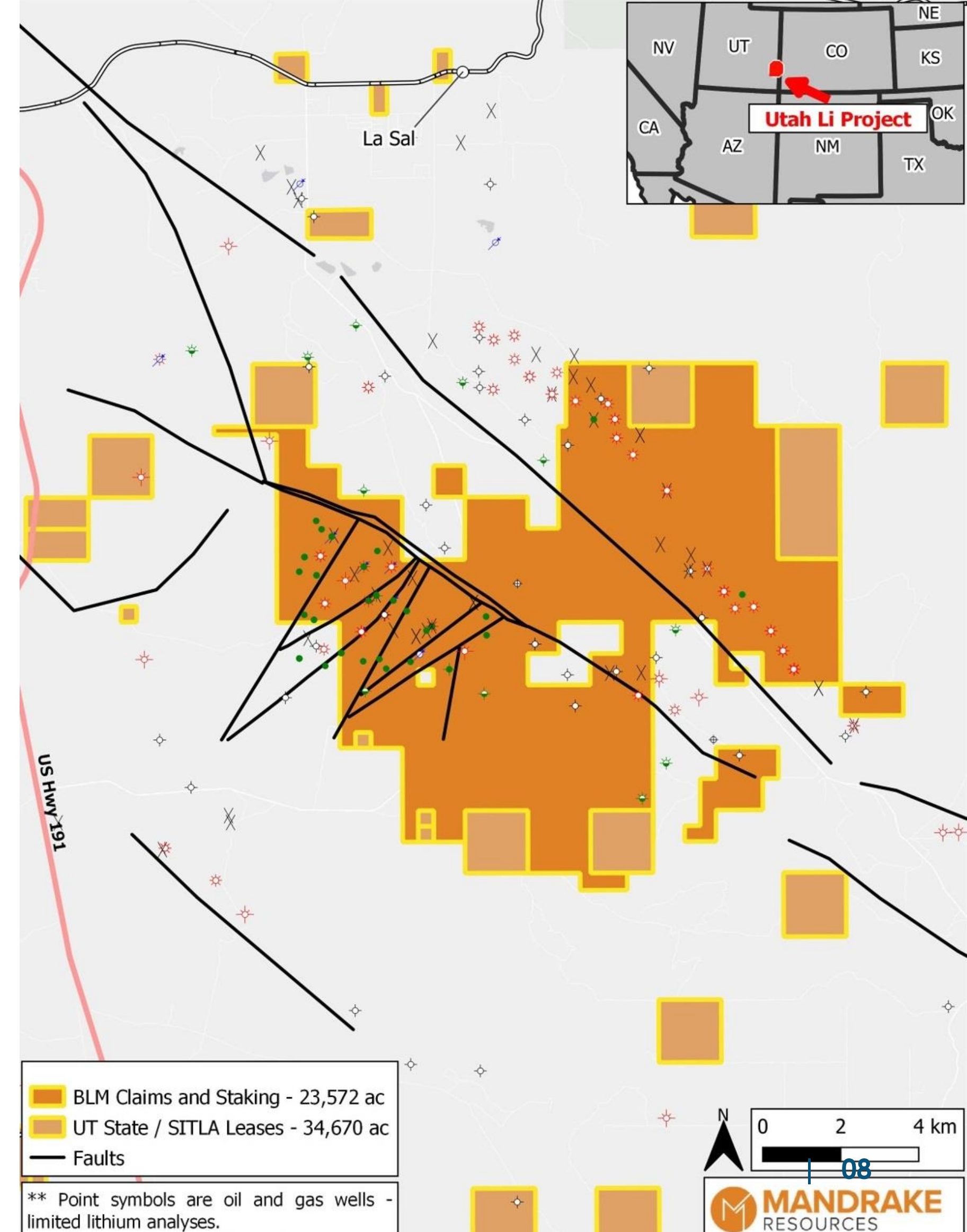
Brines hosted by the Paradox formation (>4,000 ft thick interbedded salt/clastic) and the 400ft thick Leadville Formation – enormous brine reservoirs

US's largest potash producer, Intrepid Potash, (NYSE: IPI) operate the Cane Creek potash mine 50km north

60km to the northwest, Anson Resources (ASX: ASN; market cap: \$247M) have a Mineral Resource of over 1Mt of LCE at 124mg/L with an additional aggregate Exploration Target range of 2.1Mt – 4.7Mt LCE

A Tier-1 mining jurisdiction, Utah is 11<sup>th</sup> in Fraser Institutes Global Investment Attractiveness Index

ASX: MAN | [mandrakeresources.com.au](http://mandrakeresources.com.au)





# Utah Lithium Project – Exploration Ready

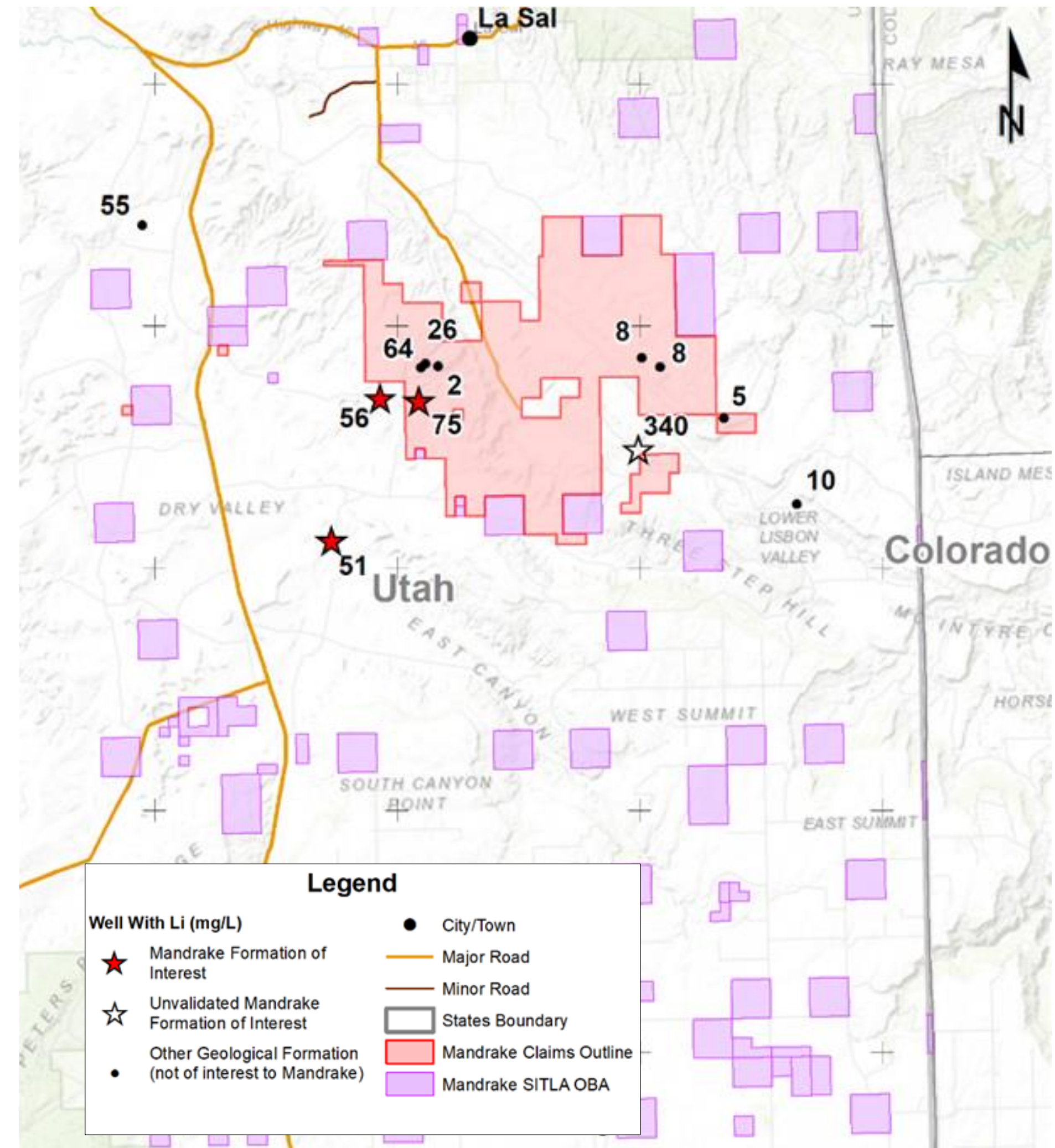
Previous sampling was suboptimal - wells exclusively drilled for oil, not targeting lithium brines

Compilation of comprehensive geological and petrophysical data is well advanced – identification of wells to be sampled underway

Strong news flow in the short term:

- Expansion of acreage
- Exploration Target
- Well-access Agreements
- Sampling
- Mineral Resource

ASX: MAN | [mandrakeresources.com.au](http://mandrakeresources.com.au)



<sup>1</sup> Hintze, L.F & Kowallis, B.J 1988, Geologic History of Utah: Department of Geology, Brigham Young University



# US – The Place to be for Critical Minerals

## Extraordinary support for non-adversarial (domestic) sources of critical minerals by way of grants & loans from US Govt & Industry

Inflation Reduction Act 2022 (IRA) - US\$391 billion for energy security and climate change

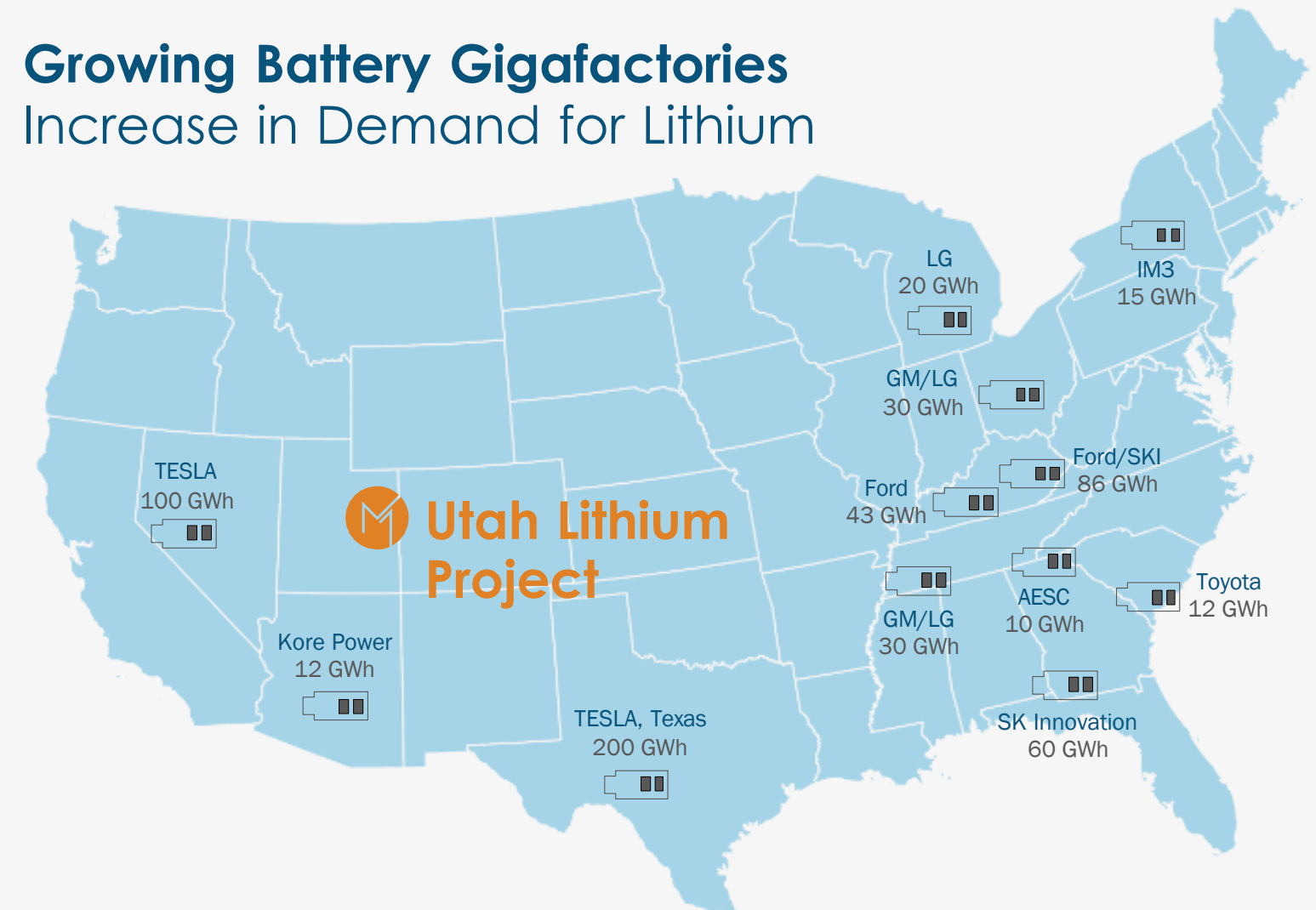
American Battery Materials Initiative (ABM)

Department of Defence to invest in raw materials for batteries (Defence Production Act)

Recent support for lithium players in the US includes:

- US\$700M loan to Loneer (ASX:INR)
- US\$141.7M grant to Piedmont (ASX:PLL)
- US\$650M investment by General Motors in the Thacker Pass demonstrates the availability of Private Industry Investment

## Growing Battery Gigafactories Increase in Demand for Lithium



The Bipartisan Infrastructure Law, CHIPS & Science Act, and IRA combined will invest more than \$135 billion to build America's electric vehicle future, including critical minerals sourcing, processing and battery manufacturing.

White House Statement October 19, 2022



# Strategic Alignment with Lithium Developer



ASX Code

**GLN**

Market Cap

**\$357M**

Mineral Resources

**6.5Mt**

Lithium Carbonate  
Equivalent (LCE)

Currently developing the Hombre Muerto West lithium brine project in Argentina

Extensive commercial and technical experience in the lithium brine sector

"The large-scale potential of Mandrake's Utah Lithium Project situated in an extremely attractive jurisdiction boasting power and water infrastructure in the lithium-hungry United States presented a compelling opportunity for Galan to gain early-stage exposure."

**JP Vargas de la Vega (Galan Lithium MD)**

30M shares at 5c (\$1.5M) for a ~5% stake in Mandrake (one year escrow)

Recently purchased another 5M MAN on-market

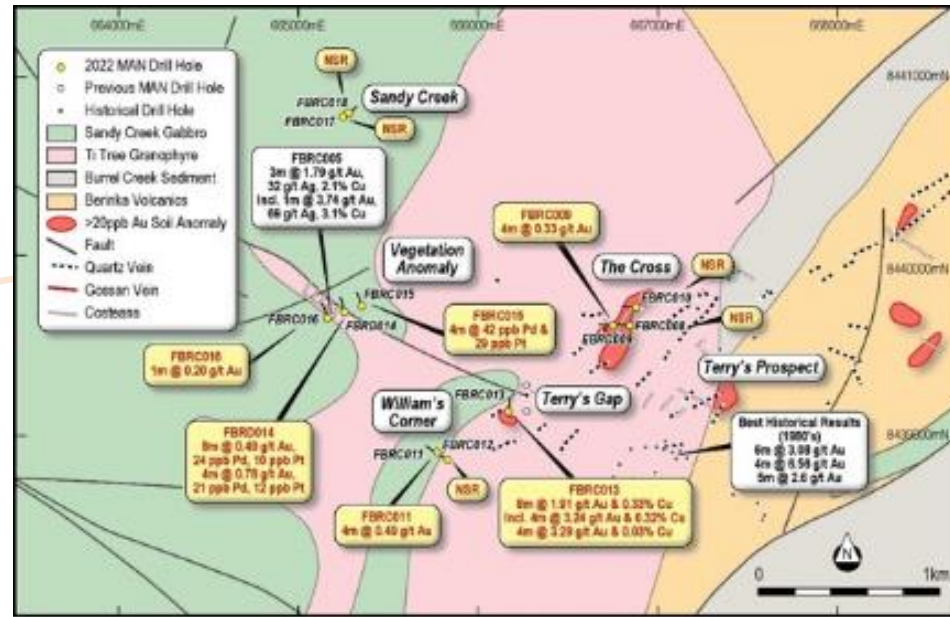
Attracted to the scale and location of the Utah Lithium Project

Provide crucial technical and commercial expertise in the lithium space

Advanced knowledge of direct lithium extraction (DLE) and hybrid DLE/evaporative pond technology



## Other Projects



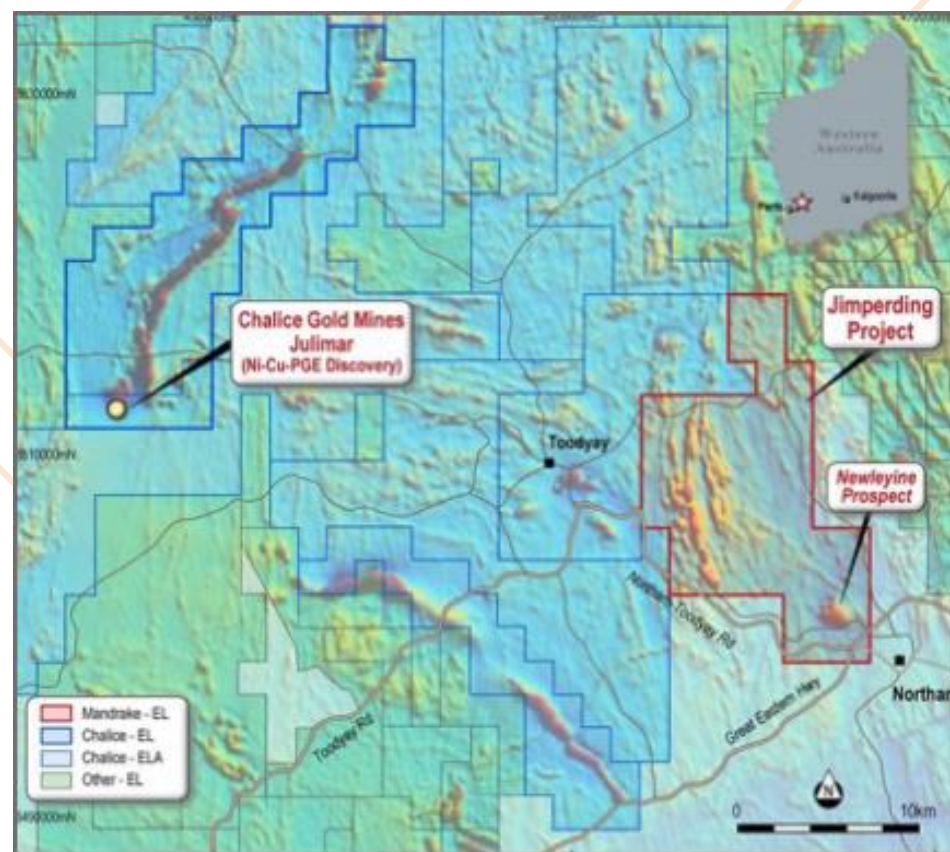
# Berinka Au-Ag-Cu Project

## Northern Territory

100%-owned Berinka Pine Creek Project is a highly prospective frontier high grade Au-Ag-Cu prospect that has received little modern exploration

Mandrake's drilling has returned high grade gold and unexpected high grade copper and silver results

Drilling has defined gold mineralisation over a strike length of greater than 2km and also identified platinum and palladium anomalism for the first time in the Sandy Creek Complex gabbro host rock.



# Jimperding PGE-Ni-Cu Project

## Western Australia

142km<sup>2</sup> EL - 100% owned by Mandrake

Located 30km east of Chalice's exciting Julimar PGE-Ni-Cu discovery

Identified and pegged on its compelling PGE-Ni-Cu potential prior to the Julimar discovery in March 2020

Newleyine Prospect has received all the work to date

Strong EM conductor (8,750 siemens) remains undrilled at Newleyine with multiple identified ultramafic intrusives remaining untested across the tenure



# Near-Term Newsflow

Strategic expansion  
of land position

Well-access agreements and  
sampling of existing wells/potential  
drilling of new well

JORC 2012  
Exploration Target

Assessment of funding  
options (US govt grant/  
loan and private industry)

JORC 2012  
Mineral Resource  
Estimate

Investigation of suitable direct  
lithium extraction (DLE) technologies  
& potential development partners





For further information:

**James Allchurch**  
Managing Director

First Floor, 10 Outram Street, West Perth WA 6005

**P** (08) 9200 3743

**F** (08) 9200 3742

**E** [admin@mandrakeresources.com.au](mailto:admin@mandrakeresources.com.au)