

# MOUNT HOPE SHINES

## 39m @ 5.2% Copper, 0.5g/t Gold

# BURKE & WILLS EXCITES

## 6m @ 6.7% Copper, 1.2g/t Gold

Carnaby Resources Limited (ASX: CNB) (**Carnaby** or the **Company**) is pleased to announce further drill results from the Greater Duchess Copper Gold Project in Mt Isa, Queensland.

### Highlights

#### Mount Hope Central Prospect:

- **MHDD045 drill assay results;**
  - **39m @ 5.2% Cu, 0.5g/t Au from 158m**
- **MHDD048 drill assay results;**
  - **51m @ 1.7% Cu, 0.2g/t Au from 237m including 32m @ 2.3% Cu, 0.3g/t Au from 251m**
- **MHDD060 drill assay results;**
  - **32m @ 2.3% Cu, 0.8g/t Au from 306m including 11m @ 5.1% Cu, 1.9g/t Au from 306m**

#### Burke & Wills Prospect:

- **BWRC030 drill assay results of;**
  - **6m @ 6.7% Cu, 1.2 g/t Au from 77m including 4m @ 9.7% Cu, 1.7 g/t Au from 77m**
- **BWRC029 drill assay results of;**
  - **5m @ 3.7% Cu, 0.5 g/t Au from 80m including 3m @ 5.8% Cu, 0.7 g/t Au from 80m**

The Company's Managing Director, Rob Watkins commented:

"The exceptional assay results from Mount Hope Central continue to reveal a significant new high grade copper gold discovery which is completely open at depth and rapidly growing. We are also delighted by the emerging Burke & Wills discovery where **approximate true width results of up to 6m @ 6.7% copper, 1.2g/t gold** have been intersected in the latest drilling and remain open. We look forward to restarting a major exploration and resource delineation drilling program this week at the Greater Duchess Copper Gold Project, where more than 40,000m of drilling is planned in what promises to be a transformative year for Carnaby Resources."

### ASX Announcement

2 February 2023

#### Fast Facts

Shares on Issue 144.6M

Market Cap (@ \$1.09 cents) \$157M

Cash \$12.6M<sup>1</sup>

<sup>1</sup>As of 31 December 2022

#### Board and Management

Peter Bowler, Non-Exec Chairman

Rob Watkins, Managing Director

Greg Barrett, Non-Exec Director & Company Secretary

Paul Payne, Non-Exec Director

#### Company Highlights

- Proven and highly credentialed management team
- Tight capital structure and strong cash position
- Mount Hope, Nil Desperandum and Lady Fanny Iron Oxide Copper Gold discoveries within the Greater Duchess Copper Gold Project, Mt Isa inlier, Queensland.
- Greater Duchess Copper Gold Project, numerous camp scale IOCG deposits over 1,022 km<sup>2</sup> of tenure
- Projects near to De Grey's Hemi gold discovery on 442 km<sup>2</sup> of highly prospective tenure
- 100% ownership of the Tick Hill Gold Project (granted ML's) in Qld, historically one of Australia highest grade and most profitable gold mines producing 511 koz at 22 g/t gold

#### Registered Office

78 Churchill Avenue Subiaco Western Australia 6008

T: +61 8 9320 2320

[www.carnabyresources.com.au](http://www.carnabyresources.com.au)

## GREATER DUCHESS COPPER GOLD PROJECT

Drill assay results have been received from a majority of the outstanding samples submitted in late 2022, confirming the downhole widths and exceeding the grades of previously reported pXRF readings.

Drill rigs are mobilising to site to re-commence a major exploration and infill drilling program at Greater Duchess in 2023, budgeting over 40,000m of RC and diamond drilling as well as completing extensive additional geophysical surveys to aid in targeting.

## MOUNT HOPE CENTRAL PROSPECT (CNB 100%)

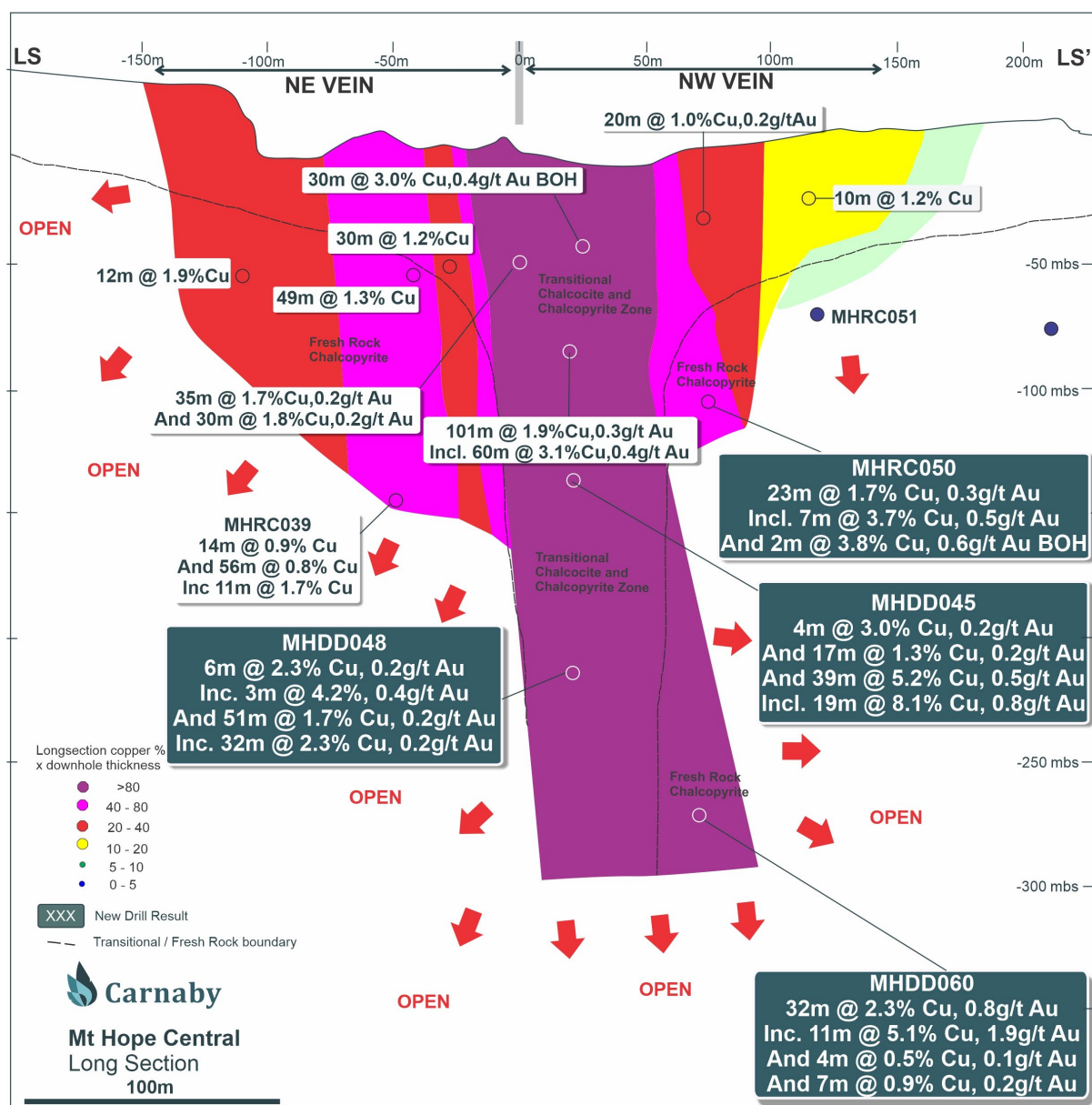
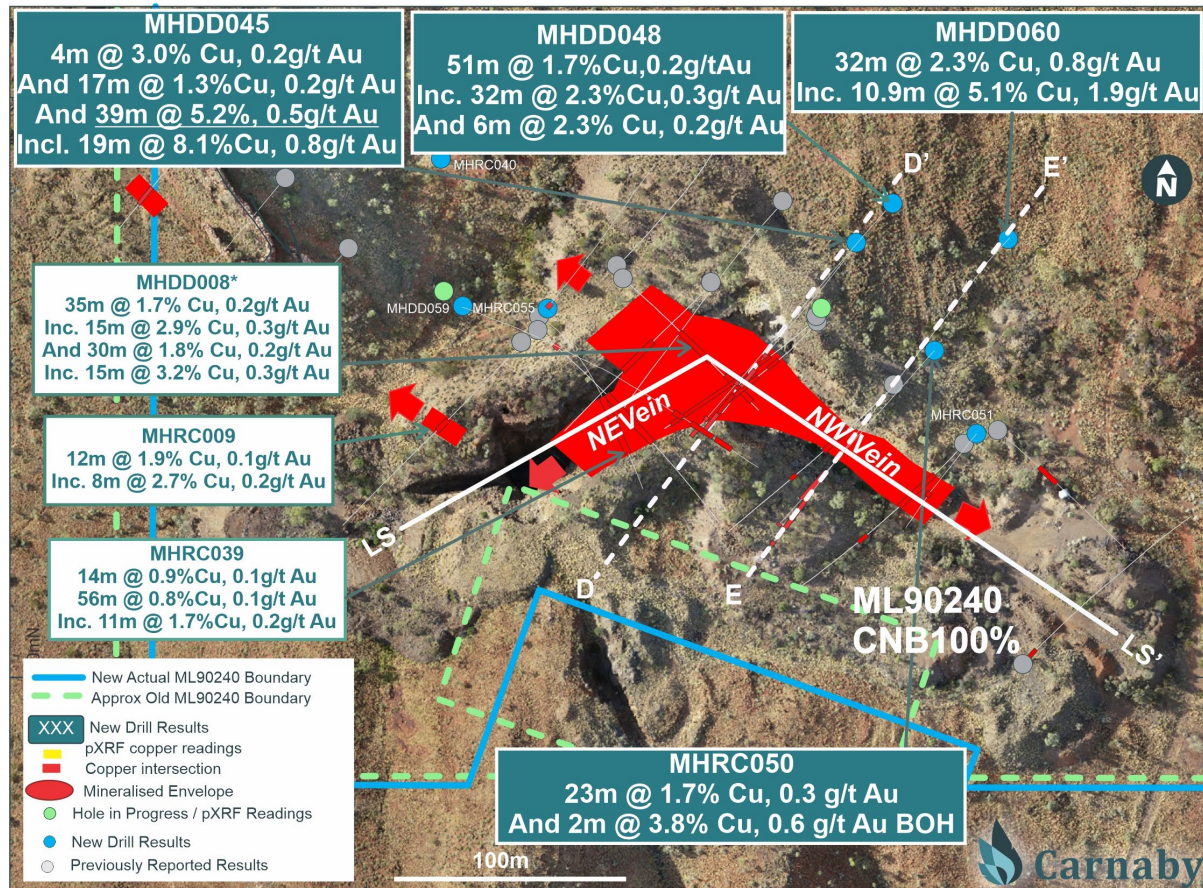


Figure 1. Mount Hope Central Long Section Showing New Drill Results.

Assay results from three key diamond drill holes at Mount Hope Central have been received. In all cases the assay results are higher grade than previously reported pXRF readings, continuing Carnaby's conservative and consistent approach to reporting copper mineralisation intersected in drilling.

As demonstrated in the Figure 1 long section, Mount Hope Central is growing and is emerging a very significant copper gold discovery. A major drill out of the Mount Hope Central corridor is about to commence.



**Figure 2. Mount Hope Central Plan Showing Location of Drill Results.**

## **MHDD045**

Diamond drill assay results have been received from MHDD045 and are detailed below.

As shown on Figure 3, the highest grade mineralisation of **39m @ 5.2% Cu and 0.5g/t Au** is associated with a brecciated and altered quartzite unit which is characterised by a deep transitional zone dominated by high grade chalcocite overprinting primary chalcopyrite. Detailed petrology is being completed to confirm the host rock protolith and whether the chalcocite mineralisation is supergene or hypogene style or a combination of both.



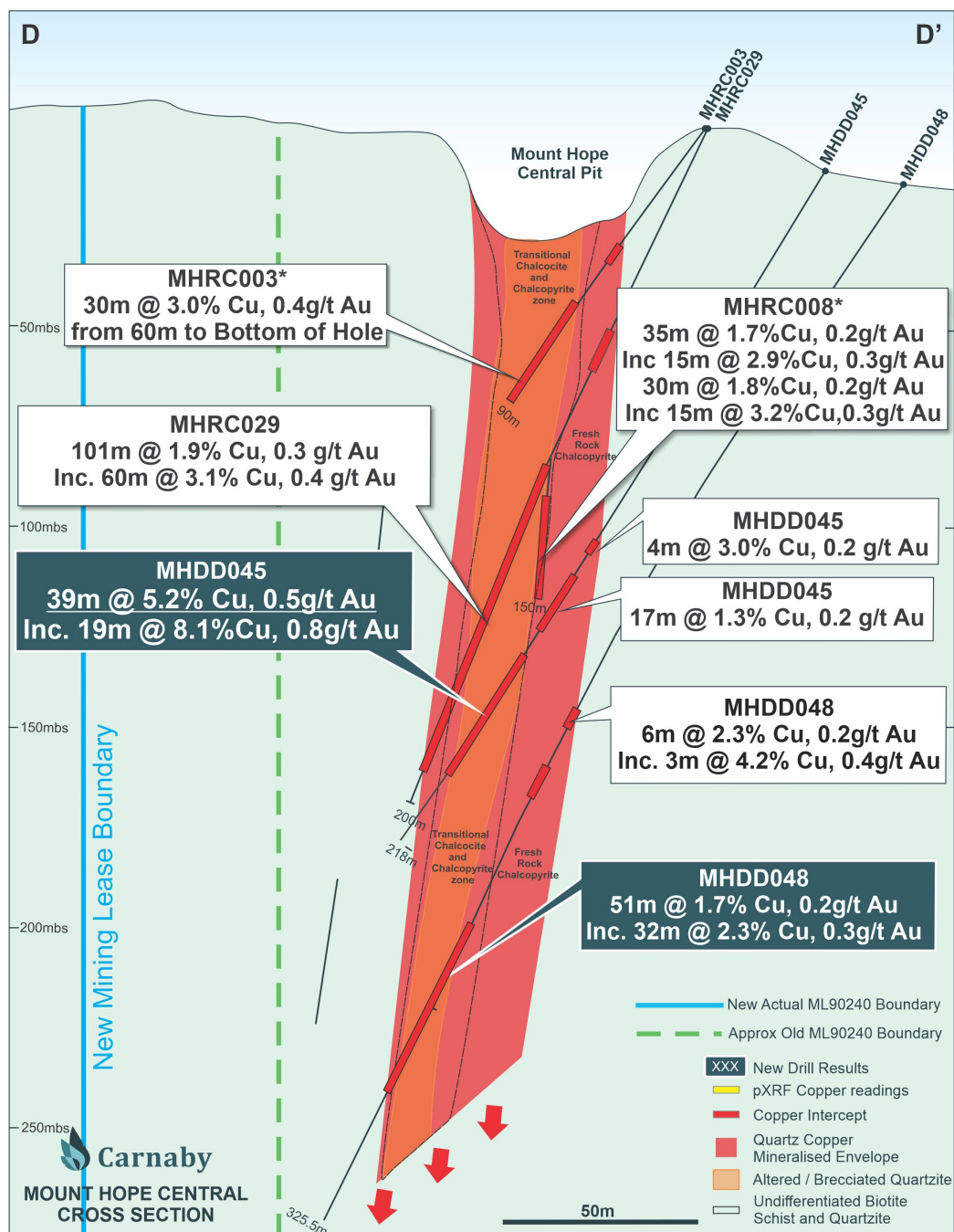
Results for MHDD045 are summarised as;

**MHDD045**                      **4m @ 3.0% Cu, 0.2g/t Au from 122m**

**And**                                **17m @ 1.3% Cu, 0.2g/t Au from 133m**

**And**                                **39m @ 5.2% Cu, 0.5g/t Au from 158m**

**Including**                      **19m @ 8.1% Cu, 0.8g/t Au from 161m**



**Figure 3. MHDD048 Drill Section.**

## **MHDD048**

Diamond drill assay results have been received from MHDD048 and are detailed below.

MHDD048 intersected a very broad **51m down hole zone of copper gold mineralisation averaging 1.7% Cu and 0.2g/t Au** within the NW vein lode (Figure 1, 2 & 3). High grade mineralisation within the hole consists of chalcopyrite and chalcocite breccia infill. It remains uncertain as to whether the chalcocite is only a secondary supergene zone or whether hypogene style chalcocite is present. Regardless, the fact that strong chalcocite and chalcopyrite mineralisation is present over broad intervals from the upper hole in MHRC003, which intersected 30m @ 3.0% Cu, 0.4 g/t Au (see ASX release 28 September 2022), to the 51m intersect in MHDD048 at 200 to 250m below surface demonstrates that it is a very significant zone of high grade copper gold mineralisation which remains completely open at depth (Figure 3).

Results for MHDD048 are summarised as;

<b>MHDD048</b>	<b>6m @ 2.3% Cu, 0.2g/t Au from 192m</b>
<b>Including</b>	<b>3m @ 4.2% Cu, 0.4g/t Au from 194m</b>
And	10m @ 0.4% Cu, 0.02g/t Au from 210m
<b>And</b>	<b>51m @ 1.7% Cu, 0.2g/t Au from 237m</b>
<b>Including</b>	<b>32m @ 2.3% Cu, 0.2g/t Au from 251m</b>

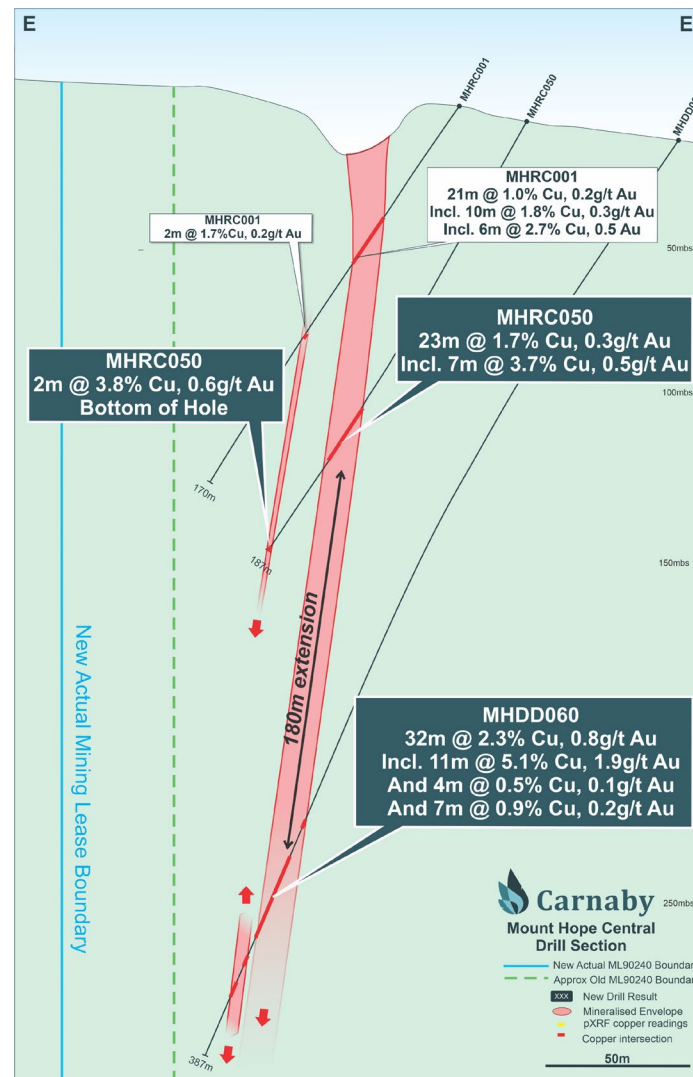
## **MHDD060**

Diamond drill assay results have been received from MHDD060 and are detailed below.

<b>MHDD060</b>	3m @ 0.9% Cu, 0.5g/t Au from 291m
<b>And</b>	<b>32m @ 2.3% Cu, 0.8g/t Au from 306m</b>
<b>Including</b>	<b>11m @ 5.1% Cu, 1.9g/t Au from 306m</b>
And	4m @ 0.5% Cu, 0.1g/t Au from 346m
And	7m @ 0.9% Cu, 0.2g/t Au from 357m

MHDD060 is the deepest drill intersection to date through the main lode at Mount Hope Central intersecting **11m @ 5.1% Cu and 1.9g/t Au** at approximately 250m below surface and remains completely open (Figure 1 & 4). The mineralisation intersected in MHDD060 is all fresh rock chalcopyrite hosted in an altered and brecciated interpreted quartzite / quartz vein

lude. Encouragingly high gold grades were recorded in MHDD060 in comparison to the adjacent transitional chalcocite-chalcopyrite high grade copper zone (Figure 1).



**Figure 4. MHDD060 and MHRC050 Cross Section.**

## **MHRC050**

MHRC050 was drilled approximately 180m up dip from MHDD060 and intersected a broad 23m down hole zone of fresh rock chalcopyrite mineralisation (Figure 1 & 4). A second zone of strong copper gold chalcopyrite mineralisation was intersected further down the hole and ended in high grade mineralisation. MHRC050 is planned to be extended at depth.

<b>MHRC050</b>	<b>23m @ 1.7% Cu, 0.3g/t Au from 123m</b>
<b>Including</b>	<b>7m @ 3.7% Cu, 0.5g/t Au from 124m</b>
<b>And</b>	<b>2m @ 3.8% Cu, 0.6g/t Au from 185m BOH</b>

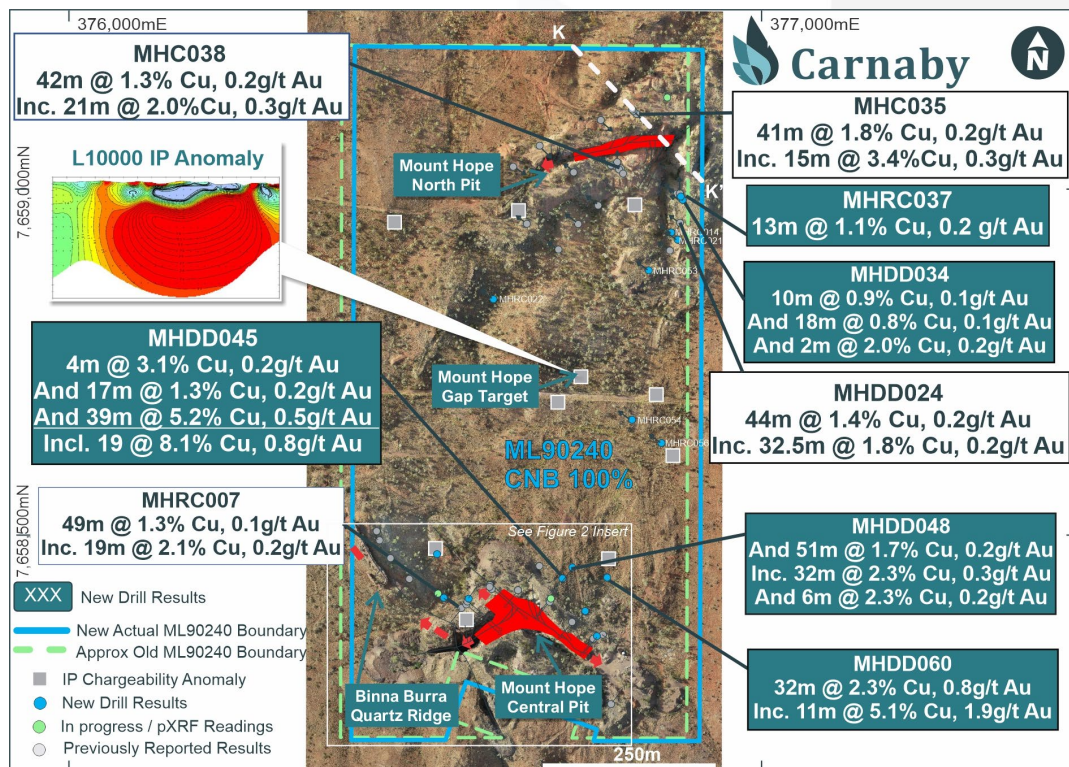
## MHDD059

MHDD059 was drilled targeting the NE extension of the NE vein. Due to the azimuth of the hole staying relatively straight as opposed to swinging to the south, the resultant trajectory of the hole intersected the northern footwall margin of the NE vein lode zone and is then interpreted to have drifted along the northern footwall boundary of the NW vein at an acute angle to the NW lode mineralisation. MHDD059 is interpreted to have not drilled through the main boomerang shaped Mount Hope Central lode. However, copper gold mineralisation was intersected with significant results detailed below.

<b>MHDD059</b>	<b>9m @ 1.8% Cu, 0.2g/t Au from 235m</b>
<b>Including</b>	<b>2m @ 5.1% Cu, 0.5g/t Au from 238m</b>
<b>And</b>	<b>24m @ 1.1% Cu, 0.1g/t Au from 258m</b>
<b>And</b>	<b>17m @ 0.6% Cu, 0.1g/t Au from 289m</b>

## **MOUNT HOPE NORTH PROSPECT (CNB 100%)**

Copper gold mineralisation at the Mount Hope North Prospect is hosted in a vein lode structure which strikes ENE and dips steeply to the south (Figure 5). Recent drilling has highlighted the spatial association of the mineralisation with an intrusion.



**Figure 5. Mount Hope Mining Lease Plan.**



Results from five drill holes have been received from Mount Hope North prospect. Results are tabulated in Appendix 1, Table 1. Results include MHRC037 which intersected **13m @ 1.1% Cu, 0.1g/t gold** from 193m including **9m @ 1.5% Cu, 0.3g/t Au** from 195m and MHDD034 which intersected broad zones of lower grade copper gold mineralisation including 10m @ 0.9% Cu, 0.1g/t Au from 350m and 18m @ 0.8% Cu, 0.1g/t Au from 368m. Further drilling is planned at Mount Hope North including diamond core tails of some of the reported holes that did not reach the main target zone.

## **MOUNT HOPE GAP IP TARGET (CNB 100%)**

Results from three drill holes have been received from the Mount Hope Gap target where a very large and strong L10000 IP chargeability anomaly is yet to be explained. The three holes MHRC022, MHRC054 and MHRC056 were drilled on section to the IP anomaly with only MHRC022 intersecting copper sulphide mineralisation of 5m @ 0.4% Cu, 0.02g/t Au from 41m and 5m @ 0.3% Cu, 0.03g/t Au from 180m (Figure 5).

The deepest hole drilled, MHRC054 intersected an intensely altered felsic / quartzite unit in the bottom of the hole. Preliminary 3D geological modelling suggests the Mount Hope North mineralised fault structures are yet to be intersected in the drill holes completed to date. A diamond tail will shortly be completed on MHRC054 to test the fault structure extension and gain important structural information on fault and lithology orientations at the Gap target.

The Gap IP anomaly remains a highly prospective target and persistence is required until the source of the IP chargeability anomaly is explained as potential mineralised structures could easily be located off section and in a different orientation (eg, a Mount Hope Central NW vein orientation).

## **BURKE & WILLS PROSPECT (CNB 82.5%, DCX 17.5%)**

At the end of 2022, a total of six shallow RC holes were completed at the Burke & Wills Prospect targeting the southern extension of the outcropping turn of the century shallow workings which disappear under shallow alluvial cover to the south (Figure 6).

The new results include the highest grade intersection yet to be drilled at Burke & Wills with **approximate true width results of 6.7% Cu and 1.2g/t Au intersected over 6m** from 77m in hole BWRC030 (Figure 7). Other results include the southern most hole drilled to date which intersected **5m @ 3.7% Cu, 0.5g/t Au** from 80m in BWRC029 (Figure 6).

The Burke & Wills mineralisation forms a very consistent high grade, linear fault zone which dips moderately to the east. High grade shallow drill results have been intersected over a strike length of 260m to date and mineralisation remains completely open along strike to the north and south, and at depth (Figure 6, 7 & 8).



Carnaby plans to continue step out drilling along strike and at depth to quantify the magnitude of the mineralisation intersected to date and incorporate it into a maiden mineral resource.

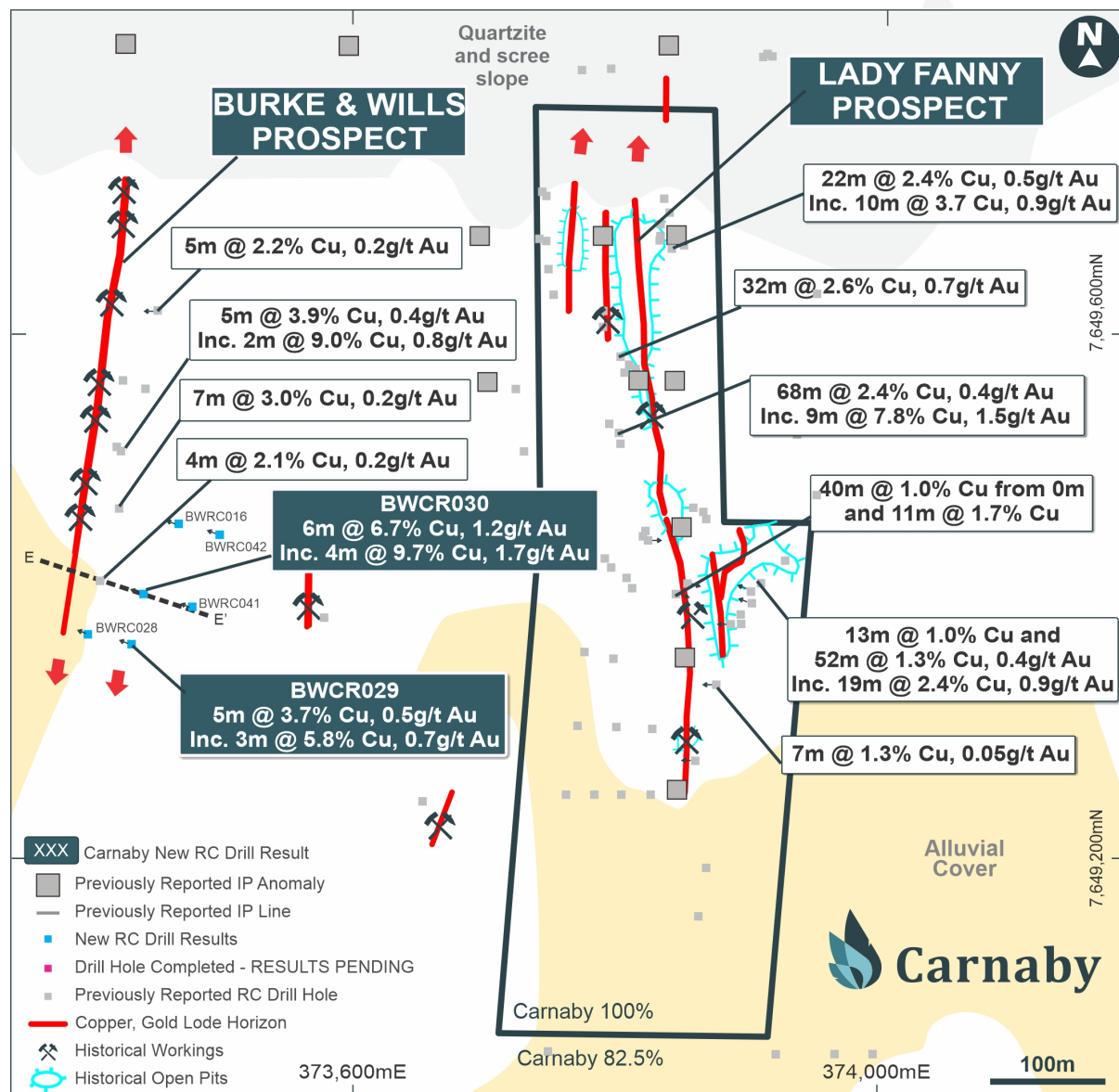
Results are tabulated in Appendix 1, Table 1 and significant new results from Burke & Wills Prospect are summarised below;

**BWRC030**                      **6m @ 6.7% Cu, 1.2g/t Au from 77m**

**Including**                      **4m @ 9.7% Cu, 1.7g/t Au from 77m**

**BWRC029**                      **5m @ 3.7% Cu, 0.5g/t Au from 80m**

**Including**                      **3m @ 5.8% Cu, 0.7g/t Au from 80m**



**Figure 6. Lady Fanny and Burke & Wills plan showing new results.**

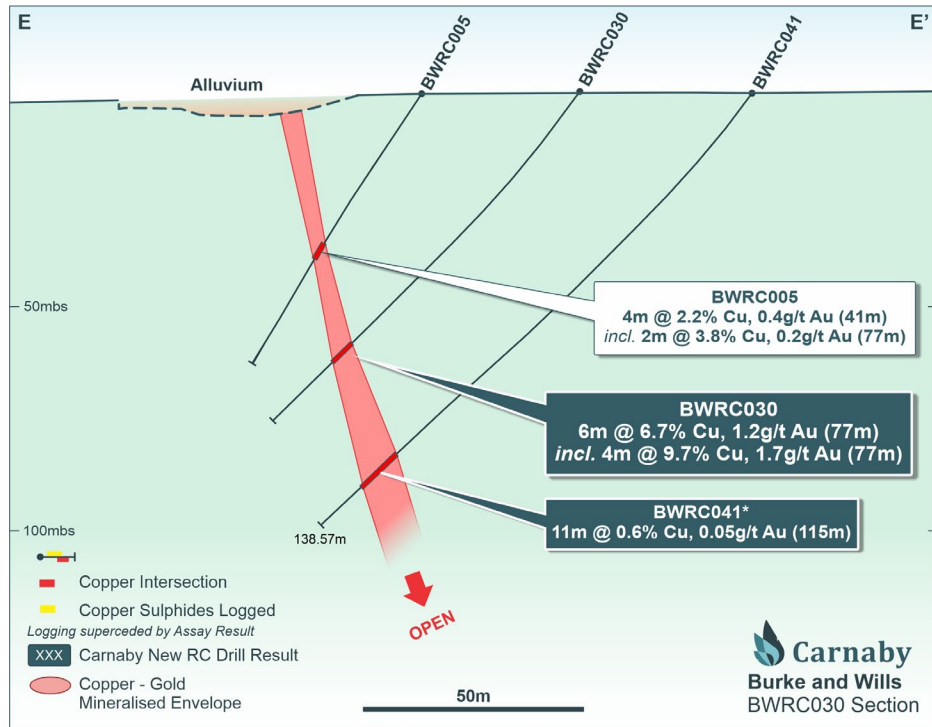


Figure 7. Burke & Wills section showing new results.

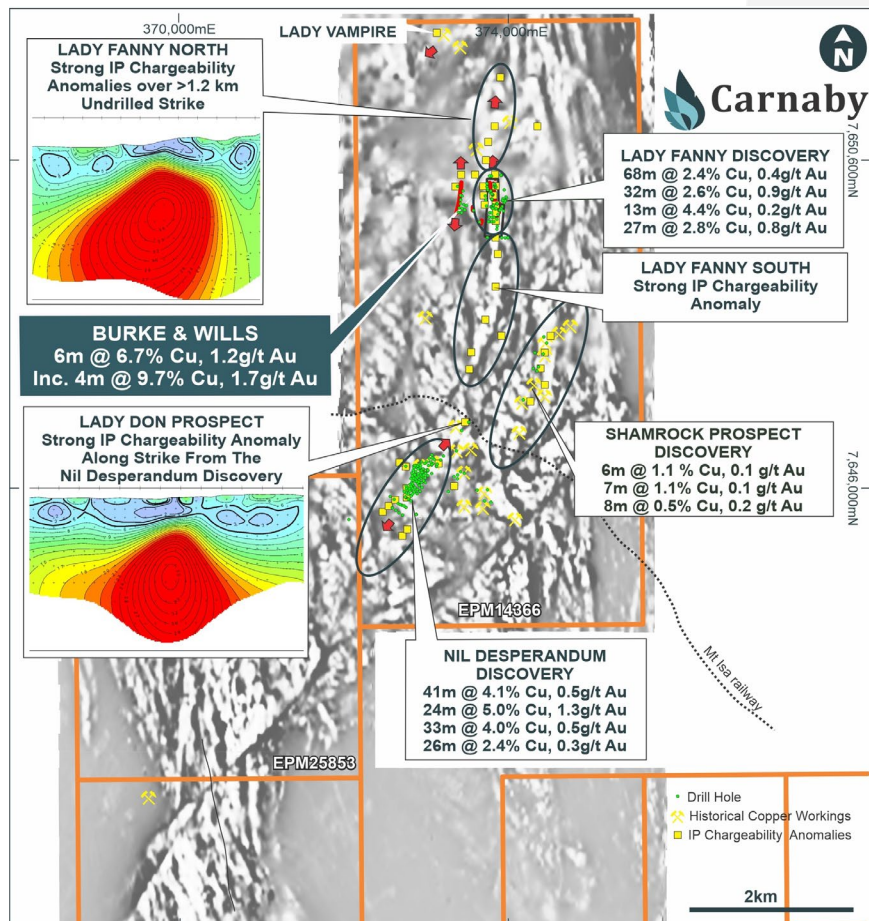
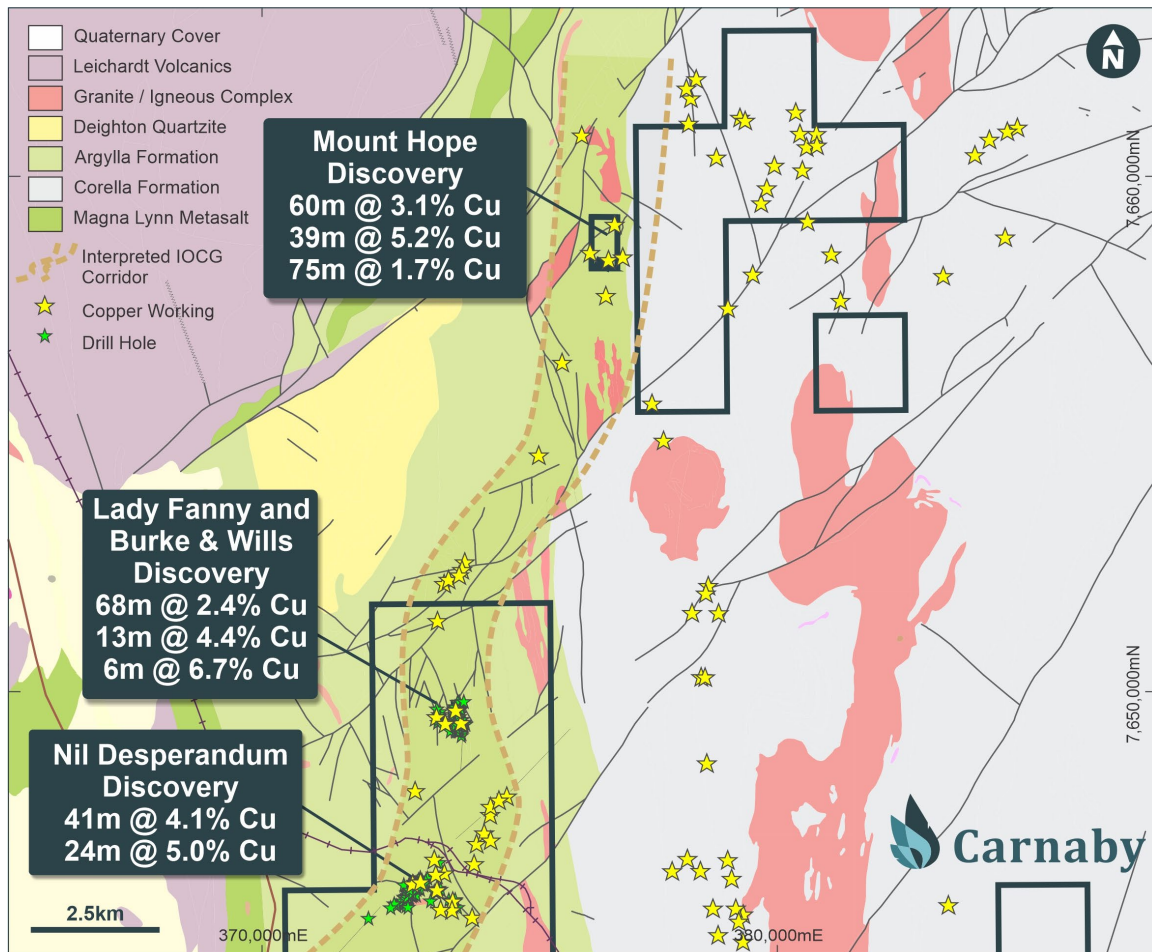


Figure 8. Lady Fanny, Burke & Wills and Nil Desperandum Plan on Aeromagnetics.



**Figure 9. Mount Hope, Nil Desperandum and Lady Fanny IOCG corridor plan.**

Further information regarding the Company can be found on the Company's website:

[www.carnabyresources.com.au](http://www.carnabyresources.com.au)

**For further information please contact:**

**Robert Watkins, Managing Director**

**+61 8 9320 2320**

#### **Competent Person Statement**

The information in this document that relates to exploration results is based upon information compiled by Mr Robert Watkins. Mr Watkins is a Director of the Company and a Member of the AUSIMM. Mr Watkins consents to the inclusion in the report of the matters based upon the information in the form and context in which it appears. Mr Watkins has sufficient experience which is relevant to the style of mineralisation and type of deposit under consideration and to the activity which is undertaken to qualify as a Competent Person as defined in the December 2012 edition of the "Australasian Code for Reporting of Exploration Results, Mineral Resources and Ore Reserves" (JORC Code).

#### **Disclaimer**

References may have been made in this announcement to certain ASX announcements, including references regarding exploration results, mineral resources and ore reserves. For full details, refer to said announcement on said date. The Company is not aware of any new information or data that materially affects this information. Other than as specified in this announcement and the mentioned announcements, the Company confirms that it is not aware of any new information or data that materially affects the information included in the original market announcements and, in the case of estimates of Mineral Resources, Exploration



Target(s) or Ore Reserves that all material assumptions and technical parameters underpinning the estimates in the relevant market announcement continue to apply and have not materially changed. The Company confirms that the form and context in which the Competent Person's findings are presented have not been materially modified from the original market announcement.

**Recently released ASX Material References that relate to this announcement include:**

Mount Hope Mining Lease Boundary Resolution, 9 January 2023

Greater Duchess Exploration Update – 41m @ 1.8% Copper, 13 December 2022

Mount Hope Discovery – 37m @ approx. 5% Copper, 16 November 2022

Excellent Metallurgical Results - Greater Duchess Project, 7 November 2022

Phenomenal Results From Mount Hope – 60m @ 3.1% Copper, 13 October 2022

Mount Hope Delivers – 30m @ 3.0% Copper, 28 September 2022

Mount Hope Discovery – 75m @ 1.7% Copper, 7 September 2022

Greater Duchess Update - 75m Copper Sulphide Vein at Mt Hope, 18 August 2022

## APPENDIX ONE

Details regarding the specific information for the drilling discussed in this news release are included below in Table 1.

**Table 1. Drill Hole Details**

Prospect	Hole ID	Easting	Northing	RL	Dip	Azimuth	Total Depth (m)	Depth From (m)	Interval (m)	Cu %	Au (g/t)
Mt Hope North	MHRC014	376869	7658936	447	-56.8	310.4	300	172 273	4 6	1.5 1.6	0.1 0.6
	MHRC021	376878	7658928	447	-65.0	310.0	300	Surface	5	0.3	0.01
	MHDD023	376864	7658913	443	-55.2	312.6	426	327	8	0.4	0.1
	MHDD034	376885	7658985	455	-77.1	307.0	490	100** 272** 350 368 390 437	2 6 10 18 3 2	1.0 0.4 0.9 0.8 0.8 2.0	0.3 0.04 0.1 0.1 0.1 0.2
	MHRC037	376883	7658988	455	-63.8	311.2	300	193 Incl 195	13 9	1.1 1.5	0.2 0.3
	MHRC053	376837	7658884	445	-54.3	311.3	170	NSI			
Mt Hope Central	MHDD045	376711	7658436	462	-59.0	219.4	218	122** 133** 158 Incl 161**	4 17 38.7 19	3.0 1.3 5.2 8.1	0.2 0.2 0.5 0.8
	MHDD048	376727	7658453	460	-54.6	221.5	326	192** Incl 194** 210 237 Incl 251	6 3 10 50.6 32	2.3 4.2 0.4 1.7 2.3	0.2 0.4 0.02 0.2 0.2
	MHRC050	376745	7658389	459	-62.8	225.1	187	123 Incl 124 185^	23 7 2	1.7 3.7 3.8	0.3 0.5 0.6
	MHRC051*	376763	7658354	457	-65.3	221.0	120	75	5	0.6	0.10
	MHRC055	376578	7658409	466	-55.2	39.8	126	Surface	4	0.5	0.10
	MHDD059	376542	7658409	465	-63.7	109.8	340	235 Incl 238 258 289	9 2 24 17.1	1.8 5.1 1.1 0.6	0.2 0.5 0.1 0.1

Prospect	Hole ID	Easting	Northing	RL	Dip	Azimuth	Total Depth (m)	Depth From (m)	Interval (m)	Cu %	Au (g/t)
	MHDD060	376777	7658439	452	-55.1	220.9	387	291 <b>306.1</b> <b>Incl 306.1</b> 346 357.3	3 <b>31.8</b> <b>10.9</b> 4 6.5	0.9 <b>2.3</b> <b>5.1</b> 0.5 0.9	<b>1.6</b> 0.8 <b>1.9</b> 0.1 0.2
Mount Hope Gap	MHRC022	376615	7658843	447	-69.5	311.6	234	41 180	5 5	0.4 0.3	0.02 0.03
	MHRC054	376813	7658667	443	-55.3	311.9	293	NSI			
	MHRC056	376855	7658633	441	-55.7	315.0	114	NSI			
Burke and Wills	BWRC016	373467	7649457	414	-55.1	285.1	150	109	6	0.8	0.1
	BWRC028	373396	7649372	408	-54.8	286.7	66	<b>45</b>	<b>1.0</b>	<b>1.1</b>	0.1
	BWRC029	373430	7649364	408	-55.0	286.9	107	<b>80</b> <b>Incl 80</b>	<b>5</b> <b>3</b>	<b>3.7</b> <b>5.8</b>	0.5 0.7
	BWRC030	373439	7649402	410	-54.2	286.1	102	<b>77</b> <b>Incl 77</b>	<b>6</b> <b>4</b>	<b>6.7</b> <b>9.7</b>	<b>1.2</b> <b>1.7</b>
	BWRC041	373477	7649392	410	-54.8	286.2	160	115	11	0.6	0.05
	BWRC042	373498	7649448	414	-54.9	286.3	180	151	<b>2</b>	<b>1.1</b>	0.1
Nil Desperandum	NLDD098	372648	7645714	389	-89.3	56.2	681	NSI			

\*5m composite assay results.

\*\*Previously released interval.

^Interval ends at bottom of hole.

## APPENDIX TWO

### JORC Code, 2012 Edition | 'Table 1' Report Section 1 Sampling Techniques and Data

(Criteria in this section apply to all succeeding sections)

Criteria	JORC Code explanation	Commentary
Sampling techniques	<ul style="list-style-type: none"> <li>Nature and quality of sampling (e.g., cut channels, random chips, or specific specialised industry standard measurement tools appropriate to the minerals under investigation, such as down hole gamma sondes, or handheld XRF instruments, etc). These examples should not be taken as limiting the broad meaning of sampling.</li> <li>Include reference to measures taken to ensure sample representivity and the appropriate calibration of any measurement tools or systems used.</li> <li>Aspects of the determination of mineralisation that are Material to the Public Report.</li> <li>In cases where 'industry standard' work has been done this would be relatively simple (eg 'reverse circulation drilling was used to obtain 1 m samples from which 3 kg was pulverised to produce a 30 g charge for fire assay'). In other cases</li> </ul>	<ul style="list-style-type: none"> <li>The RC drill chips were logged and visual abundances estimated by suitably qualified and experienced geologist.</li> <li>Recent RC samples were collected via a cone splitter mounted below the cyclone. A 2-3kg sample was collected from each 1m interval.</li> </ul>

Criteria	JORC Code explanation	Commentary
	more explanation may be required, such as where there is coarse gold that has inherent sampling problems. Unusual commodities or mineralisation types (eg submarine nodules) may warrant disclosure of detailed information.	
Drilling techniques	<ul style="list-style-type: none"> <li>Drill type (e.g., core, reverse circulation, open-hole hammer, rotary air blast, auger, Bangka, sonic, etc) and details (eg core diameter, triple or standard tube, depth of diamond tails, face-sampling bit or other type, whether core is oriented and if so, by what method, etc).</li> </ul>	<ul style="list-style-type: none"> <li>All recent RC holes were completed using a 5.5" face sampling bit.</li> <li>Diamond holes in the current announcement were completed using HQ size core and triple tube to help preserve any friable core. Previous diamond drilling was undertaken using NQ sized drill core.</li> </ul>
Drill sample recovery	<ul style="list-style-type: none"> <li>Method of recording and assessing core and chip sample recoveries and results assessed.</li> <li>Measures taken to maximise sample recovery and ensure representative nature of the samples.</li> <li>Whether a relationship exists between sample recovery and grade and whether sample bias may have occurred due to preferential loss/gain of fine/coarse material.</li> </ul>	<ul style="list-style-type: none"> <li>For recent RC and diamond drilling, no significant recovery issues for samples were observed. Occasional loss of sample was observed at the changeover metre interval from RC to diamond.</li> <li>For diamond any core loss is recorded with core blocks denoting the start and end depth of the core loss interval. Triple tube was used to preserve friable/broken sections of HQ core.</li> <li>Drill chips collected in chip trays are considered a reasonable visual representation of the entire sample interval.</li> </ul>
Logging	<ul style="list-style-type: none"> <li>Whether core and chip samples have been geologically and geotechnically logged to a level of detail to support appropriate Mineral Resource estimation, mining studies and metallurgical studies.</li> <li>Whether logging is qualitative or quantitative in nature. Core (or costean, channel, etc) photography.</li> </ul> <p>The total length and percentage of the relevant intersections logged.</p>	<ul style="list-style-type: none"> <li>RC holes have been logged for lithology, weathering, mineralisation, veining, structure and alteration.</li> <li>Diamond holes logged in the same categories as RC with the addition of orientated structural measurements, density, magnetic susceptibility and conductivity.</li> <li>All chips have been stored in chip trays on 1m intervals and logged in the field.</li> </ul>
Sub-sampling techniques and sample preparation	<ul style="list-style-type: none"> <li>If core, whether cut or sawn and whether quarter, half or all core taken.</li> <li>If non-core, whether riffled, tube sampled, rotary split, etc and whether sampled wet or dry.</li> <li>For all sample types, the nature, quality and appropriateness of the sample preparation technique.</li> <li>Quality control procedures adopted for all sub-sampling stages to maximise representivity of samples.</li> <li>Measures taken to ensure that the sampling is representative of the in-situ material collected, including for instance results for field duplicate/second-half sampling.</li> <li>Whether sample sizes are appropriate to the grain size of the material being sampled.</li> </ul>	<ul style="list-style-type: none"> <li>All RC samples are cone split at the cyclone to create a 1m sample of 2-3kg. The remaining sample is retained in a plastic bag at the drill site.</li> <li>For mineralised zones, the 1m cone split sample is taken for analysis. For non-mineralised zones a 5m composite spear sample is collected and the individual 1m cone split samples over the same interval retained for later analysis if positive results are returned.</li> <li>Diamond core is half-sawn and sampled from one side only.</li> </ul>
Quality of assay data and laboratory tests	<ul style="list-style-type: none"> <li>The nature, quality and appropriateness of the assaying and laboratory procedures used and whether the technique is considered partial or total.</li> </ul>	<ul style="list-style-type: none"> <li>For lab assays, company inserted blanks are inserted as the first sample for every hole. A company inserted gold standard and a copper standard are inserted every 50<sup>th</sup> sample. No</li> </ul>



Criteria	JORC Code explanation	Commentary
	<ul style="list-style-type: none"> <li>For geophysical tools, spectrometers, handheld XRF instruments, etc, the parameters used in determining the analysis including instrument make and model, reading times, calibrations factors applied and their derivation, etc.</li> <li>Nature of quality control procedures adopted (eg standards, blanks, duplicates, external laboratory checks) and whether acceptable levels of accuracy (ie lack of bias) and precision have been established.</li> </ul>	<p>standard identification numbers are provided to the lab.</p> <ul style="list-style-type: none"> <li>Standards are checked against expected lab values to ensure they are within tolerance. No issues have been identified.</li> <li>Comparison data to date indicates RC assays to be more than 60% higher compared to when taking the pXRF measurement through the green bag and 30% higher compared to when taking through a calico bag. Diamond core assays have been found to be generally also higher than reported pXRF readings. Comparison test work will continue to be conducted to build a larger population of measurements to determine differences.</li> </ul>
Verification of sampling and assaying	<ul style="list-style-type: none"> <li>The verification of significant intersections by either independent or alternative company personnel.</li> <li>The use of twinned holes.</li> <li>Documentation of primary data, data entry procedures, data verification, data storage (physical and electronic) protocols.</li> <li>Discuss any adjustment to assay data.</li> </ul>	<ul style="list-style-type: none"> <li>Historic production data has been collated from government open file reports.</li> <li>A Maxgeo SQL database is currently used in house for all historic and new records. Recent results have been reported directly from lab reports and sample sheets collated in excel.</li> <li>Results reported below the detection limit have been stored in the database at half the detection limit – e.g., &lt;0.001ppm stored as 0.0005ppm</li> </ul>
Location of data points	<ul style="list-style-type: none"> <li>Accuracy and quality of surveys used to locate drill holes (collar and down-hole surveys), trenches, mine workings and other locations used in Mineral Resource estimation.</li> <li>Specification of the grid system used.</li> <li>Quality and adequacy of topographic control.</li> </ul>	<ul style="list-style-type: none"> <li>All hole locations were obtained using a Trimble SP60 GPS in UTM MGA94.</li> <li>Current RC and Diamond holes were downhole surveyed by Reflex True North seeking gyro.</li> </ul>
Data spacing and distribution	<ul style="list-style-type: none"> <li>Data spacing for reporting of Exploration Results.</li> <li>Whether the data spacing and distribution is sufficient to establish the degree of geological and grade continuity appropriate for the Mineral Resource and Ore Reserve estimation procedure(s) and classifications applied.</li> <li>Whether sample compositing has been applied.</li> </ul>	<ul style="list-style-type: none"> <li>Further extensional and infill drilling is required to confirm the orientation and true width of the copper mineralisation intersected. At Burke &amp; Wills outcropping historical workings and drilling show a high degree of continuity of the mineralisation.</li> </ul>
Orientation of data in relation to geological structure	<ul style="list-style-type: none"> <li>Whether the orientation of sampling achieves unbiased sampling of possible structures and the extent to which this is known, considering the deposit type.</li> <li>If the relationship between the drilling orientation and the orientation of key mineralised structures is considered to have introduced a sampling bias, this should be assessed and reported if material.</li> </ul>	<ul style="list-style-type: none"> <li>All holes were considered to intersect the mineralisation at a reasonable angle.</li> </ul>
Sample security	<ul style="list-style-type: none"> <li>The measures taken to ensure sample security.</li> </ul>	<ul style="list-style-type: none"> <li>Recent RC drilling has had all samples immediately taken following drilling and submitted for assay by supervising Carnaby geology personnel.</li> </ul>
Audits or reviews	<ul style="list-style-type: none"> <li>The results of any audits or reviews of sampling techniques and data.</li> </ul>	<ul style="list-style-type: none"> <li>Not conducted</li> </ul>

## Section 2 Reporting of Exploration Results

(Criteria listed in the preceding section also apply to this section).

Criteria	Explanation	Commentary
Mineral tenement and land tenure status	<ul style="list-style-type: none"> <li>Type, reference name/number, location and ownership including agreements or material issues with third parties such as joint ventures, partnerships, overriding royalties, native title interests, historical sites, wilderness or national park and environmental settings.</li> <li>The security of the tenure held at the time of reporting along with any known impediments to obtaining a licence to operate in the area.</li> </ul>	<ul style="list-style-type: none"> <li>The Lady Fanny Prospect area encompassed by historical expired mining leases have been amalgamated into EPM14366 and is 100% owned by Carnaby.</li> <li>The Nil Desperandum, Shamrock, Burke &amp; Wills and Lady Fanny South Prospects are located on EPM14366 (82.5% interest acquired from Discovex Resources Limited (<b>Discovex, ASX: DCX</b>)).</li> <li>Discovex retain a 17.5% free carried interest in the project through to a Decision to Mine.</li> <li>At a Decision to Mine, Carnaby has the first right of refusal to acquire the remaining interest for fair market value.</li> <li>The Mount Hope Mining Lease ML90240 is 100% owned by Carnaby Resources. The exact location of the mining lease boundary is currently being evaluated by the Queensland Department of Minerals as part of a normal process and may therefore be subject to small scale changes.</li> </ul>
Acknowledgment and appraisal of exploration by other parties.	<ul style="list-style-type: none"> <li>Acknowledgment and appraisal of exploration by other parties.</li> </ul>	<ul style="list-style-type: none"> <li>There has been exploration work conducted over the Queensland project regions for over a century by previous explorers. The project comes with significant geoscientific information which covers the tenements and general region, including: a compiled database of 6658 drill hole (exploration and near-mine), 60,300 drilling assays and over 50,000 soils and stream sediment geochemistry results. This previous exploration work is understood to have been undertaken to an industry accepted standard and will be assessed in further detail as the projects are developed.</li> </ul>
Geology	<ul style="list-style-type: none"> <li>Deposit type, geological setting and style of mineralisation.</li> </ul>	<ul style="list-style-type: none"> <li>The prospects mentioned in this announcement are located in the Mary Kathleen domain of the eastern Fold Belt, Mount Isa Inlier. The Eastern Fold Belt is well known for copper, gold and copper-gold deposits; generally considered variants of IOCG deposits. The region hosts several long-lived mines and numerous historical workings. Deposits are structurally controlled, forming proximal to district-scale</li> </ul>

Criteria	Explanation	Commentary
		<p>structures which are observable in mapped geology and geophysical images. Local controls on the distribution of mineralisation at the prospect scale can be more variable and is understood to be dependent on lithological domains present at the local-scale, and orientation with respect to structures and the stress-field during D3/D4 deformation, associated with mineralisation.</p> <ul style="list-style-type: none"> <li>Consolidation of the ground position around the mining centres of Tick Hill and Duchess and planned structural geology analysis enables Carnaby to effectively explore the area for gold and copper-gold deposits.</li> </ul>
Drill hole Information	<ul style="list-style-type: none"> <li>A summary of all information material to the understanding of the exploration results including a tabulation of the following information for all Material drill holes: <ul style="list-style-type: none"> <li>easting and northing of the drill hole collar</li> <li>elevation or RL (Reduced Level – elevation above sea level in metres) of the drill hole collar</li> <li>dip and azimuth of the hole</li> <li>down hole length and interception depth</li> <li>hole length.</li> </ul> </li> </ul> <p>If the exclusion of this information is justified on the basis that the information is not Material and this exclusion does not detract from the understanding of the report, the Competent Person should clearly explain why this is the case.</p>	<ul style="list-style-type: none"> <li>Included in report Refer to Appendix 1, Table 1.</li> </ul>
Data aggregation methods	<ul style="list-style-type: none"> <li>In reporting Exploration Results, weighting averaging techniques, maximum and/or minimum grade truncations (e.g., cutting of high grades) and cut-off grades are usually Material and should be stated.</li> <li>Where aggregate intercepts incorporate short lengths of high grade results and longer lengths of low-grade results, the procedure used for such aggregation should be stated and some typical examples of such aggregations should be shown in detail.</li> <li>The assumptions used for any reporting of metal equivalent values should be clearly stated.</li> </ul>	<ul style="list-style-type: none"> <li>No metal equivalent values have been reported</li> </ul>
Relationship between mineralisation widths and intercept lengths	<ul style="list-style-type: none"> <li>These relationships are particularly important in the reporting of Exploration Results.</li> <li>If the geometry of the mineralisation with respect to the drill hole angle is known, its nature should be reported.</li> <li>If it is not known and only the down hole lengths are reported, there should be a clear statement to this effect (e.g., 'down hole length, true width not known').</li> </ul>	<ul style="list-style-type: none"> <li>All intervals are reported as downhole width and true widths are not definitively known. At Burke &amp; Wills down hole intervals generally approximate true widths as the holes are drilled orthogonal to the mineralisation.</li> </ul>
Diagrams	<ul style="list-style-type: none"> <li>Appropriate maps and sections (with scales) and tabulations of intercepts should be included for any significant discovery being reported These should include, but not be limited to a plan view of drill hole collar locations and appropriate sectional views.</li> </ul>	<ul style="list-style-type: none"> <li>See the body of the announcement.</li> </ul>



Criteria	Explanation	Commentary
Balanced reporting	<ul style="list-style-type: none"> <li>Where comprehensive reporting of all Exploration Results is not practicable, representative reporting of both low and high grades and/or widths should be practiced to avoid misleading reporting of Exploration Results.</li> </ul>	<ul style="list-style-type: none"> <li>As discussed in the announcement</li> </ul>
Other substantive exploration data	<ul style="list-style-type: none"> <li>Other exploration data, if meaningful and material, should be reported including (but not limited to): geological observations; geophysical survey results; geochemical survey results; bulk samples – size and method of treatment; metallurgical test results; bulk density, groundwater, geotechnical and rock characteristics; potential deleterious or contaminating substances.</li> </ul>	<ul style="list-style-type: none"> <li>As discussed in the announcement</li> </ul>
Further work	<ul style="list-style-type: none"> <li>The nature and scale of planned further work (e.g., tests for lateral extensions or depth extensions or large-scale step-out drilling).</li> <li>Diagrams clearly highlighting the areas of possible extensions, including the main geological interpretations and future drilling areas, provided this information is not commercially sensitive.</li> </ul>	<ul style="list-style-type: none"> <li>Planned exploration works are detailed in the announcement.</li> </ul>