

2.3km Outcropping Pegmatite Target Identified with Mapped “Spodumene Suite” Pegmatite Granites

Omnia Metals Group Ltd (“Omnia” or the “Company”) is pleased to update the market with early results of the due diligence that is being completed on the Lac des Montagnes Project. Review of geological data and aerial imagery has highlighted extensive outcrop of the prospective Senay Suite and have been identified as highly prospective for lithium.

HIGHLIGHTS

- A detailed review as part of Omnia's due diligence process has highlighted an exciting, high priority target with extensive “Spodumene Suite” pegmatite granites outcropping at the Senay 5 target.
- The Senay 5 target is **2.3km in length and 440m in width** (Figure 3).
- The mapped pegmatites have been identified and termed the “Spodumene Suite” by the Government of Quebec's, Ministère des Ressources Naturelles et des Forêts (“MERN”) and are highly prospective for lithium based on striking geological similarities with the world class Wabouchi lithium deposit (36.7Mt @ 1.16% Li₂O), which is located 38 km along strike from Omnia's Senay project.
- Over forty (40) pegmatite granites have been mapped within the Project area, **seven (7) of which have been identified by MERN as a high priority and highly prospective to be spodumene hosting**. Omnia continues to review each priority target as part of its due diligence and is buoyed by the early results.
- These previously unrecognised pegmatite granites, recently mapped and studied by MERN geologists, have geological features relevant to exploration including their age, mineralogy, amphibolite-facies metamorphic setting, syn-metamorphic timing, and 3D geometry that match other such world-class pegmatites globally.
- The Lac des Montagnes Belt is a world class lithium belt, in a world class lithium district (James Bay) of which **Omnia is acquiring a 540 km² package with a 110 km of strike length** (Figure 1).
- Omnia will keep its shareholders informed of its findings as it continues its due diligence process over the extensive tenement package which is split in 3 areas:
 - Property 1 - Senay Lithium (136 km²)
 - Property 2 - Lac des Montagnes Lithium West Zone (98 km²)
 - Property 3 - Lac des Montagnes Lithium East Zone (306 km²)

Omnia Metals' Executive Director, James Warren, commented:

"We are buoyed by the early results of our due diligence process which highlights significant outcropping, prospective pegmatite granites of the Senay Suite. We know the Lac Des Montagnes Project has the right geology to host world-class lithium deposits, so we are excited by the outcomes of the early targeting work that has been completed. The Company will continue to methodically review all the available data across this extensive land package with a view to commence field testing as soon as practicably possible."

"We are excited to begin the discovery journey on this exciting belt-scale exploration opportunity with one of the largest land packages in the exciting James Bay Area for a junior on the ASX."

The Senay Property Area

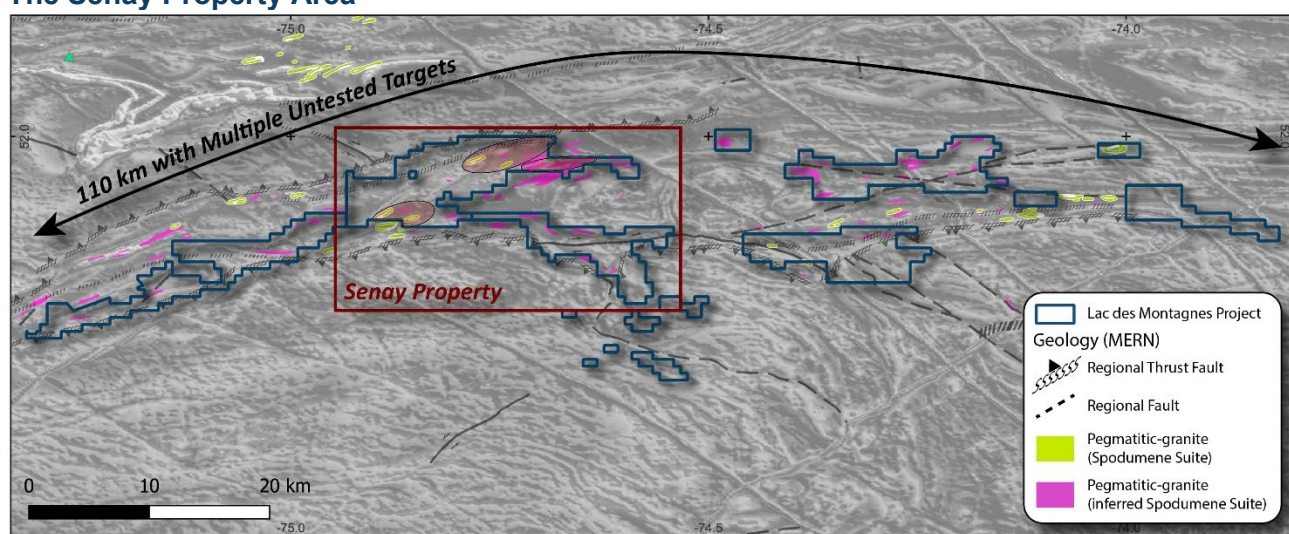


Figure 1: Distribution of pegmatitic granites (as mapped by MERN) over the Lac des Montagnes Project highlighting the Senay Property area.

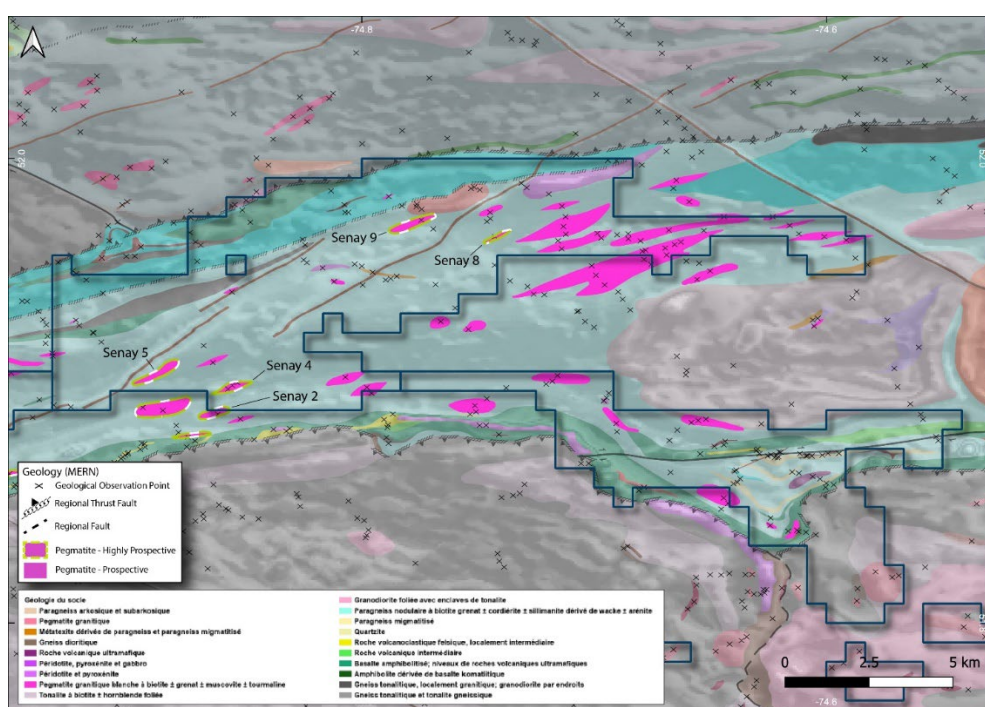


Figure 2: Geology of the Senay Property highlighting the location of "highly-prospective" lithium zones, as defined by MERN.

Omnia's initial focus of its due diligence efforts has been the Senay Property located in the centre of the Lac des Montagnes Project (Figure 1). The Senay Property area has an abundance (>20) of mapped pegmatites of the Senay Suite which are locally enriched in tourmaline, garnet and muscovite. Five (5) of the mapped pegmatites have been defined by MERN as the "Spodumene Suite" and are considered highly prospective based on geological analogies with adjacent lithium discoveries.

Review of geophysical data, aerial imagery and mapping data highlights the Senay 5 prospect outcrops over an area **2.3 km in length and 440 m width** (Figure 3). The Company will target the Senay 5 Prospect and other highly prospective zones with planned mapping and sampling programs to begin following completion of the acquisition. Following systematic testing of the pegmatite granites, any identified mineralisation will be followed up immediately with drill testing.

The Company continues to complete a thorough geological review of all available data and will update the market as more information comes to light. Omnia believes the chance of discovery success in the Lac des Montagnes Project is high for spodumene hosted lithium mineralisation.

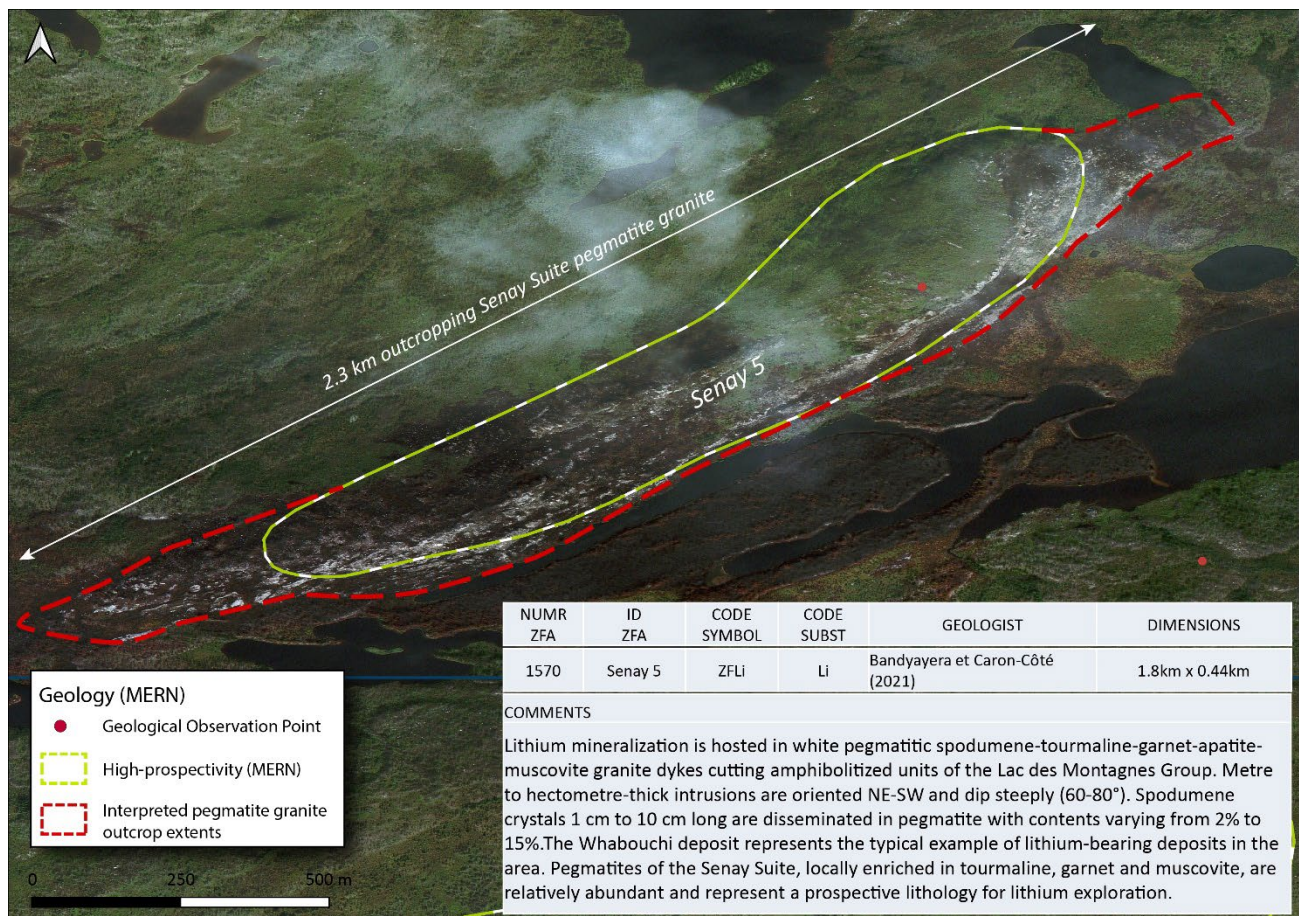


Figure 3: Aerial imagery of the Senay 5 Target.

The Lac des Montagnes Project

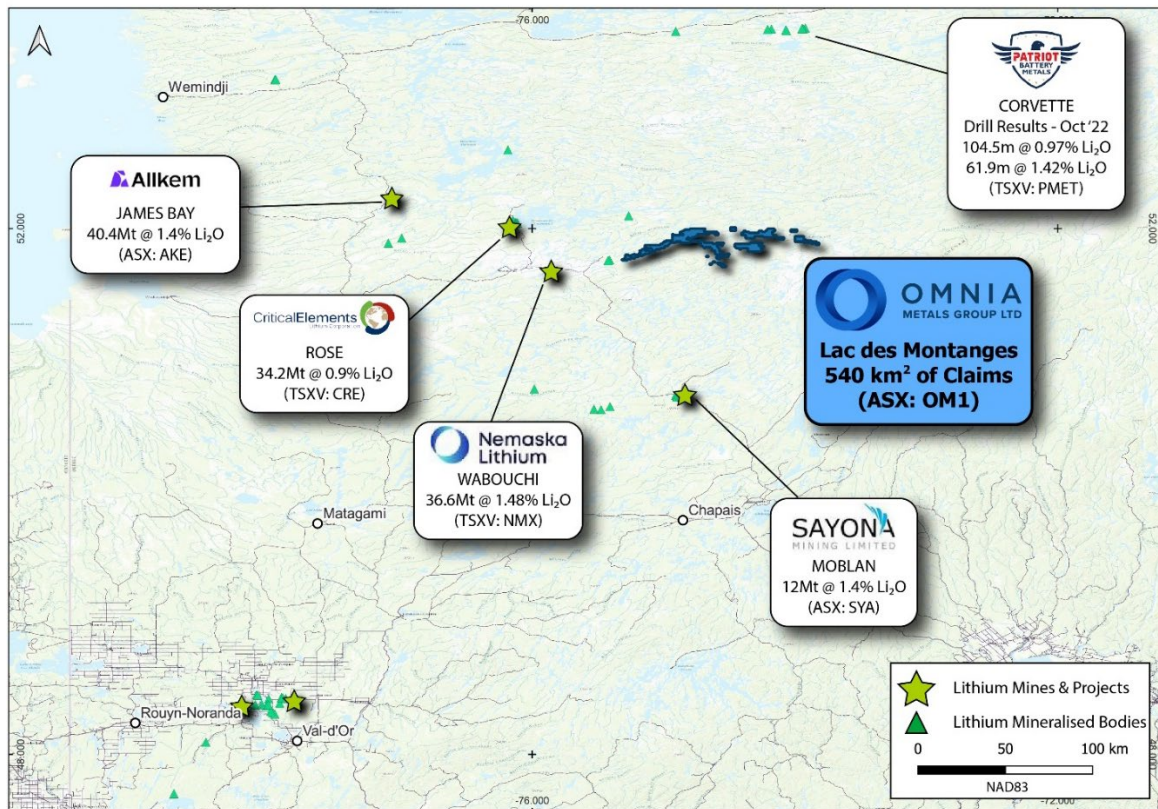


Figure 3: Location of the Lac des Montagnes Project, Quebec, Canada.

The Lac des Montagnes Project is situated within the rapidly emerging James Bay region, Québec, Canada (Figure 3). Québec is a highly attractive investment destination for lithium exploration and production due to its supportive resource development sector, access to skilled labour and its proximity to high-growth electric vehicle markets in North America and Europe. Additionally, through its recently announced Critical Minerals Strategy, the Canadian government is committed to becoming the global supplier of choice for sustainably and responsibly sourced critical minerals, such as lithium. The Project is well serviced by key infrastructure and is accessed via the all-weather Route du Nord and a network of roads that service the Hydro-Québec power stations in the region. The Project is situated within the Eeyou Istchee, a Québec territory governed by the Cree Nations people.

The Project consists of 1,030 granted mineral claims covering 540 km² of the Lac des Montagnes Belt, an Archean aged greenstone belt situated in Canada's Superior Province. The Lac des Montagnes Belt has long been recognised as a prospective lithium corridor with the presence of spodumene deposits known in the region since the Quebec geological survey completed mapping work in 1962 (Valiquette, 1963).

The Lac des Montagnes Belt is host to Namaska Lithium's (TSXV: NMX) world class Wabouchi lithium deposit (36.7Mt @ 1.16% Li₂O) which is located 38 km along strike from the Project. Recently, MERN released a new 1:50,000 scale geological map of the Lac des Montagnes region which has defined several new stratigraphic units and sub-units and led to significantly enhanced understanding of the economic geology of the belt (Bandyayera, 2022). Prospectivity analysis, for a variety of commodities was completed as part of the process with prospective areas for lithium, gold and base metal mineralisation identified.

Other Projects

OMNIA METALS GROUP LTD

ACN: 648 187 651

22 Townshend Road, SUBIACO, WA, AUSTRALIA, 6008

www.omniametals.com.au

Omnia reaffirms its commitment to complete the exploration programs on its existing Salt Creek Project and Ord Basin Project, as outlined in the Company's Prospectus dated 20 January 2022. A 9,000m drilling program is underway at the Salt Creek Project and the Company is continuing to progress towards on-ground exploration at the Ord Basin Project.

Further details regarding completed and planned exploration programs is set out in the Company's quarterly activities report released to ASX on 30 January 2023

- END -

This announcement is approved for release by the Board of Omnia Metals Group

For further information please contact:

James Warren

Managing Director

james@omniametals.com.au

Anna MacKintosh

Company Secretary

anna@omniametals.com.au

About Omnia

Omnia Metals Group Ltd (ASX:OM1) goal is to become a leader in the exploration, and development, of future facing commodities used in advanced technologies and essential to the global energy transition.

Omnia continues to progress its highly prospective Ord Basin Project through extensive approval process in consultation with the local Native Title groups and relevant stakeholders. The Ord Basin Project consists of 1,305km² of tenure situated in an emerging district prospective for Norilsk-style nickel-copper-PGE and stratigraphic copper mineral systems. Due to the impact of the extensive flooding in the Kimberley region (which does not materially impact the Company's intentions with respect to the Projects), Omnia expects further delays in conducting on-ground exploration at the Ord Basin Project. The Company will continue to monitor the situation over the coming weeks and months and will update the market as more information comes to light.

The Salt Creek Project covers an area of approximately 223km² and is prospective for copper, nickel and gold mineral systems. The Company is currently completing a 9,000m drilling program at the Salt Creek Project targeting gold and nickel-copper mineralisation.

Omnia reaffirms its commitment to complete the exploration programs as outlined in the Company Prospectus.

Competent Persons Statement

The information in this report which relates to Exploration Results is based on information compiled by Dr. James Warren, a Competent Person who is a member of the Australian Institute of Geoscientists. Dr. Warren is the Managing Director of Omnia Metals Group Ltd. Dr. Warren has sufficient experience relevant to the style of mineralisation and type of deposit under consideration and to the activity he is undertaking to qualify as a Competent Person as defined in the 2012 Edition of the "Australian Code of Reporting of Exploration Results, Mineral Resources and Ore Reserves". Dr. Warren consents to the inclusion in this report of the matters based on the information in the form and context in which it appears.

Forward Looking Statements

Statements contained in this release, particularly those regarding possible or assumed future performance, costs, dividends, production levels or rates, prices, resources, reserves or potential growth of Omnia Metals Group Limited, are, or may be, forward looking statements. Such statements relate to future events and expectations and, as such, involve known and unknown risks and uncertainties. Actual results and developments may differ materially from those expressed or implied by these forward-looking statements depending on a variety of factors.

References

BANDYAYERA, B. 2022. Ministry of Energy and Natural Resources (MERN). Lac des Montagnes Group. Quebec Stratigraphic Lexicon. https://gq.mines.gouv.qc.ca/lexique-stratigraphique/province-du-superieur/groupe-du-lac-des-montagnes_en

BANDYAYERA, D., CARON-CÔTÉ, E., 2019. Geology of the Montagnes Lake area, La Grande, Nemiscau and Opatika subprovinces, Eeyou Istchee James Bay, Quebec, Canada. MERN; [BG 2019-03](#) , 1 plan.

BELAND, C. 2011. Geochemistry and Geochronology of the Whabouchi Pegmatite Dykes as Revealed Through Zircon. University of Toronto; end of study project, 103 pages.

VALIQUETTE, G. 1963. Geology of the Lac des Montagnes region, Mistassini territory. MNR. [RP 500](#) , 12 pages, 1 plan.

APPENDIX I – MERN outcrop mapping data

GEOFC ID	UTM ZONE	EASTING	NORTHING	CODE ROCH1	QUALF1	MINR1	CODE ROCH2	QUALF2	MINR2	DATE OBSR	DESCRIPTION
456137	18	529719	5741156	11B		BO MG TL	11B			20210610	Pegmatite granitique blanche à biotite ± grenat ± muscovite ± tourmaline
456218	18	504625	5749237	11B	11G	BO GR TL	M4		BO GR	20210616	Pegmatite granitique blanche à biotite ± grenat ± muscovite ± tourmaline
456239	18	508864	5756120	11B		BO	M4	S3	CD BO	20210617	Pegmatite granitique blanche à biotite ± grenat ± muscovite ± tourmaline
456326	18	517525	5758499	11B		BO	11G	11B		20210629	Pegmatite granitique blanche à biotite ± grenat ± muscovite ± tourmaline
456330	18	517670	5755968	11B		BO				20210629	Pegmatite granitique blanche à biotite ± grenat ± muscovite ± tourmaline
456356	18	523957	5748612	11B	11G	BO	M4		BO	20210630	Pegmatite granitique blanche à biotite ± grenat ± muscovite ± tourmaline
456357	18	523776	5748551	11B		GR MG HM BO	11B			20210630	Pegmatite granitique blanche à biotite ± grenat ± muscovite ± tourmaline
456387	18	530783	5747815	11B	HM+	BO EP MG	M4		BO	20210702	Pegmatite granitique blanche à biotite ± grenat ± muscovite ± tourmaline
456397	18	526525	5746097	11B	11B	GR	M12		BO HB GR	20210702	Pegmatite granitique blanche à biotite ± grenat ± muscovite ± tourmaline
456454	18	525886	5758320	11B	11G	BO	M4	S3	BO	20210723	Pegmatite granitique blanche à biotite ± grenat ± muscovite ± tourmaline
456455	18	526389	5757903	11B	11G	BO	M4	S3	BO	20210723	Pegmatite granitique blanche à biotite ± grenat ± muscovite ± tourmaline
456457	18	527418	5757372	11B		BO GR	M4	S3	BO	20210723	Pegmatite granitique blanche à biotite ± grenat ± muscovite ± tourmaline
456458	18	528069	5757206	11B		BO EP	M4	S3	BO	20210723	Pegmatite granitique blanche à biotite ± grenat ± muscovite ± tourmaline
456478	18	510308	5759050	11B	11G	MV GR BO	M4	S3	BO	20210724	Pegmatite granitique blanche à biotite ± grenat ± muscovite ± tourmaline
456479	18	509974	5758843	11B	11G	BO MV GR TL EP	M4	S3	BO	20210724	Pegmatite granitique blanche à biotite ± grenat ± muscovite ± tourmaline
456486	18	522714	5756804	11B	11G	BO GR EP	M4	S3	BO	20210727	Pegmatite granitique blanche à biotite ± grenat ± muscovite ± tourmaline
456487	18	522993	5756975	11B	11G	EP BO GR	M4	S3	BO	20210727	Pegmatite granitique blanche à biotite ± grenat ± muscovite ± tourmaline
456488	18	523819	5757464	11B		BO	M4	S3	BO	20210727	Pegmatite granitique blanche à biotite ± grenat ± muscovite ± tourmaline
456490	18	519651	5756756	11B	11G	BO				20210727	Pegmatite granitique blanche à biotite ± grenat ± muscovite ± tourmaline
456502	18	519768	5757455	11B	11G	MV GR	M4	S3	GR BO	20210727	Pegmatite granitique blanche à biotite ± grenat ± muscovite ± tourmaline
456503	18	519697	5757826	11B	11G	MV GR	M4	S3	GR BO	20210727	Pegmatite granitique blanche à biotite ± grenat ± muscovite ± tourmaline
456504	18	519757	5758289	11B	11G	BO MV GR	M4		GR BO	20210727	Pegmatite granitique blanche à biotite ± grenat ± muscovite ± tourmaline
456505	18	519650	5758799	11B	11G	GR GR	M4	S3	GR BO	20210727	Pegmatite granitique blanche à biotite ± grenat ± muscovite ± tourmaline
456506	18	519257	5759376	11B	11G	MV BO	M4		BO	20210727	Pegmatite granitique blanche à biotite ± grenat ± muscovite ± tourmaline
456508	18	518443	5759891	11B	11G					20210727	Pegmatite granitique blanche à biotite ± grenat ± muscovite ± tourmaline
456144	18	527239	5743096	11C	HM+	BO MG	11D		BO HB	20210610	Granodiorite porphyroïde, foliée; injections de granite rose à magnétite
456253	18	506034	5752256	11C		BO				20210623	Granodiorite porphyroïde, foliée; injections de granite rose à magnétite
456323	18	517053	5759701	11C		FK	11G	11B		20210629	Granodiorite porphyroïde, foliée; injections de granite rose à magnétite
456324	18	516956	5759640	11C		FK BO	11G	11B		20210629	Granodiorite porphyroïde, foliée; injections de granite rose à magnétite
456325	18	517218	5759568	11C		MG BO FK	11G	11B	BO CL MG	20210629	Granodiorite porphyroïde, foliée; injections de granite rose à magnétite
456511	18	515344	5758757	11C		MV MG BO	XXXX		FK	20210727	Granodiorite porphyroïde, foliée; injections de granite rose à magnétite
456512	18	515358	5758878	11C		BO MG	XXXX		FK	20210727	Granodiorite porphyroïde, foliée; injections de granite rose à magnétite
456513	18	515499	5758637	11C		MG BO	XXXX		FK	20210727	Granodiorite porphyroïde, foliée; injections de granite rose à magnétite
456237	18	513217	5758846	11D		HB BO	11G	11B		20210617	Granodiorite porphyroïde, foliée; injections de granite rose à magnétite
456243	18	508671	5758213	11D		BO	11G	11B	BO	20210617	Granodiorite porphyroïde, foliée; injections de granite rose à magnétite
456250	18	505377	5753049	11D	M1	BO		11G		20210623	Granodiorite porphyroïde, foliée; injections de granite rose à magnétite
456292	18	520264	5746474	11D	M1	BO		11G	11B	20210628	Granodiorite porphyroïde, foliée; injections de granite rose à magnétite
456293	18	520493	5746482	11D	M1	BO		11G	11B	20210628	Granodiorite porphyroïde, foliée; injections de granite rose à magnétite
456441	18	525600	5748399	11D		HB BO	11G	11B		20210710	Granodiorite porphyroïde, foliée; injections de granite rose à magnétite
456138	18	529521	5741071	11G	11B	BO			BO MG	20210610	Pegmatite granitique blanche à biotite ± grenat ± muscovite ± tourmaline
456139	18	529027	5741339	11G	11B	BO			BO	20210610	Pegmatite granitique blanche à biotite ± grenat ± muscovite ± tourmaline
456140	18	528457	5740527	11G	11B	BO			BO HB	20210610	Pegmatite granitique blanche à biotite ± grenat ± muscovite ± tourmaline
456141	18	528480	5739937	11G	HM+	GR MG MV CL EP	11B		BO	20210610	Pegmatite granitique blanche à biotite ± grenat ± muscovite ± tourmaline
456147	18	526682	5743307	11G	11B					20210610	Pegmatite granitique blanche à biotite ± grenat ± muscovite ± tourmaline
456149	18	525887	5743536	11G	11B		M16	V3B		20210610	Pegmatite granitique blanche à biotite ± grenat ± muscovite ± tourmaline
456156	18	504756	5756072	11G	11B	BO GR	M1	M2	HB BO	20210611	Pegmatite granitique blanche à biotite ± grenat ± muscovite ± tourmaline
456175	18	504585	5751727	11G	11B					20210612	Pegmatite granitique blanche à biotite ± grenat ± muscovite ± tourmaline
456176	18	504597	5751590	11G						20210612	Pegmatite granitique blanche à biotite ± grenat ± muscovite ± tourmaline
456219	18	505136	5749145	11G	11B	GR MV				20210616	Pegmatite granitique blanche à biotite ± grenat ± muscovite ± tourmaline
456235	18	513333	5758480	11G	11B	BO MV	11G		11B	20210617	Pegmatite granitique blanche à biotite ± grenat ± muscovite ± tourmaline
456249	18	505281	5753297	11G	11D	MV GR				20210623	Pegmatite granitique blanche à biotite ± grenat ± muscovite ± tourmaline
456270	18	510071	5750312	11G	11B	BO	M4	S3	BO	20210625	Pegmatite granitique blanche à biotite ± grenat ± muscovite ± tourmaline
456271	18	509913	5750186	11G	11B					20210625	Pegmatite granitique blanche à biotite ± grenat ± muscovite ± tourmaline
456272	18	509728	5750312	11G	11B	BO MV GR	M4	S3	BO	20210626	Pegmatite granitique blanche à biotite ± grenat ± muscovite ± tourmaline
456278	18	513903	5750106	11G	11C	MV GR BO	M4		GR BO	20210625	Pegmatite granitique blanche à biotite ± grenat ± muscovite ± tourmaline
456279	18	513265	5750588	11G		GR MV				20210625	Pegmatite granitique blanche à biotite ± grenat ± muscovite ± tourmaline
456287	18	512921	5755167	11G						20210626	Pegmatite granitique blanche à biotite ± grenat ± muscovite ± tourmaline
456289	18	509340	5751275	11G	11B	GR MV				20210626	Pegmatite granitique blanche à biotite ± grenat ± muscovite ± tourmaline
456291	18	509894	5754663	11G	11B	BO GR MV	M4	S3	HB BO	20210626	Pegmatite granitique blanche à biotite ± grenat ± muscovite ± tourmaline
456295	18	521302	5748404	11G	11B					20210628	Pegmatite granitique blanche à biotite ± grenat ± muscovite ± tourmaline
456305	18	516507	5753913	11G	11B	GR BO MV	M4	S3	BO GR	20210628	Pegmatite granitique blanche à biotite ± grenat ± muscovite ± tourmaline
456306	18	516082	5753263	11G	11B	GR BO MV	M4	S3	BO GR	20210628	Pegmatite granitique blanche à biotite ± grenat ± muscovite ± tourmaline
456307	18	516902	5752889	11G	11B	MV GR BO EP	M4	S3	BO	20210628	Pegmatite granitique blanche à biotite ± grenat ± muscovite ± tourmaline
456309	18	513739	5755905	11G	11B	GR MV				20210628	Pegmatite granitique blanche à biotite ± grenat ± muscovite ± tourmaline
456311	18	514445	5755247	11G	11B	GR MV				20210628	Pegmatite granitique blanche à biotite ± grenat ± muscovite ± tourmaline
456320	18	517670	5757336	11G	11B	GR MV	M4	S3	BO	20210629	Pegmatite granitique blanche à biotite ± grenat ± muscovite ± tourmaline
456331	18	524445	5758314	11G	11B	GR BO	M4	M22	BO	20210629	Pegmatite granitique blanche à biotite ± grenat ± muscovite ± tourmaline
456333	18	523174	5757096	11G	11B	GR	M4		BO	20210629	Pegmatite granitique blanche à biotite ± grenat ± muscovite ± tourmaline
456334	18	522756	5756472	11G	11B	GR	M4		BO	20210629	Pegmatite granitique blanche à biotite ± grenat ± muscovite ± tourmaline
456335	18	522131	5756694	11G	11B	GR	M4		BO GR	20210629	Pegmatite granitique blanche à biotite ± grenat ± muscovite ± tourmaline
456336	18	521620	5757242	11G	11B	MV	M4			20210629	Pegmatite granitique blanche à biotite ± grenat ± muscovite ± tourmaline
456338	18	520702	5757497	11G	11B	BO	M4	S3	BO	20210629	Pegmatite granitique blanche à biotite ± grenat ± muscovite ± tourmaline
456339	18	520830	5757279	11G	HM+	BO	M4	S3	BO	20210629	Pegmatite granitique blanche à biotite ± grenat ± muscovite ± tourmaline
456341	18	521981	5757143	11G	11B	BO	M4	S3	BO	20210629	Pegmatite granitique blanche à biotite ± grenat ± muscovite ± tourmaline
456342	18	522041	5756650	11G	11B	BO GR	M4	S3	BO	20210629	Pegmatite granitique blanche à biotite ± grenat ± muscovite ± tourmaline
456358	18	523526	5748454	11G	11B	BO	M4	S2	BO	20210630	Pegmatite granitique blanche à biotite ± grenat ± muscovite ± tourmaline
456359	18	523109	5748090	11G	11B	GR BO MV	M4		BO	20210630	Pegmatite granitique blanche à biotite ± grenat ± muscovite ± tourmaline
456360	18	523879	5747580	11G	11B	GR	M4		BO	20210630	Pegmatite granitique blanche à biotite ± grenat ± muscovite ± tourmaline
456361	18	524533	5747555	11G	11B	GR	M4	S3	BO GR	20210630	Pegmatite granitique blanche à biotite ± grenat ± muscovite ± tourmaline
456363	18	524211	5747311	11G	11B	BO GR	S9B		MG	20210630	Pegmatite granitique blanche à biotite ± grenat ± muscovite ± tourmaline
456364	18	523793	5746954	11G	T2	BO				20210630	Pegmatite granitique blanche à biotite ± grenat ± muscovite ± tourmaline
456385	18	530319	5748883	11G	11B	BO MV	M4	S3	BO	20210702	Pegmatite granitique blanche à biotite ± grenat ± muscovite ± tourmaline
456386	18	530389	5748651	11G	11B	MV	11C		BO	20210702	Pegmatite granitique blanche à biotite ± grenat ± muscovite ± tourmaline
456433	18	519399	5750410	11G	11B	GR BO	M4	S3	BO GR	20210707	Pegmatite granitique blanche à biotite ± grenat ± muscovite ± tourmaline
456434	18	519549	5750689	11G	11B	BO GR	M4	S3	BO	20210707	Pegmatite granitique blanche à biotite ± grenat ± muscovite ± tourmaline
456446	18	527352	5745773	11G	11B	GR	M4			20210710	Pegmatite granitique blanche à biotite ± grenat ± muscovite ± tourmaline
456469	18	520998	5761003	11G	11B	BO				20210724	Pegmatite granitique blanche à biotite ± grenat ± muscovite ± tourmaline
456509	18	514526	5759244	11G	11B	BO	M4	S3		20210727	Pegmatite granitique blanche à biotite ± grenat ± muscovite ± tourmaline
456510	18	514919	5758794	11G	11B					20210727	Pegmatite granitique blanche à biotite ± grenat ± muscovite ± tourmaline
456514	18	515491	5758115	11G	11B	BO	M4	S3	BO	20210727	Pegmatite granitique blanche à biotite ± grenat ± muscovite ± tourmaline
456148	18	526423	5743266	11A	M16	HB	11A		HB BO	20210610	Diabase (NE-SW) : gabbronorite
456242	18	508648	5757505	11A	M16	HB	V3	M16	HB	20210617	Diabase (NE-SW) : gabbronorite
456388	18	530848	5747626	11A	M16	HB	11B			20210702	Diabase (NE-SW) : gabbronorite
456551	18	510437	5758002	11A	T2	HB				20210802	Diabase (NE-SW) : gabbronorite
456355	18	524866	5746179	11B	11A					20210630	Diabase (NE-SW) : gabbronorite
456389	18	526179	5747044	11B	11A					20210702	Diabase (NE-SW) : gabbronorite
456391	18	526056	5746915	11B	11A					20210702	Diabase (NE-SW) : gabbronorite
456393	18	525799	5746865	11B	11A					20210702	Diabase (NE-SW) : gabbronorite
456507	18	518604	5759681	11B	M16	AM PH				20210727	Péridotite et pyroxénite
456286	18	512578	5755818	11K		OX MG CX					

APPENDIX I – MERN outcrop mapping data

GEOFC ID	UTM ZONE	EASTING	NORTHING	CODE ROCH1	QUALF1	MINR1	CODE ROCH2	QUALF2	MINR2	DATE OBSR	DESCRIPTION
456159	18	505586	5755229	M4	T2	CD GR BO	11B	T2	GR BO	20210611	Paragneiss à biotite ± grenat dérivé de wacke ± arénite
456160	18	506076	5754597	M4	S3	BO	11B		BO	20210611	Paragneiss à biotite ± grenat dérivé de wacke ± arénite
456238	18	512818	5759509	M4	S2C	HB BO	11G	11B	BO	20210617	Paragneiss à biotite ± grenat dérivé de wacke ± arénite
456241	18	508817	5757052	M4	S3	GR BO	11B	HM+	BO	20210617	Paragneiss à biotite ± grenat dérivé de wacke ± arénite
456252	18	505806	5752691	M4	S3	BO	XXXX		QZ	20210623	Paragneiss à biotite ± grenat dérivé de wacke ± arénite
456283	18	511984	5757188	M4	S3	BO	11G	11B		20210626	Paragneiss à biotite ± grenat dérivé de wacke ± arénite
456284	18	512015	5756201	M4	S3	BO	11B	11G	BO	20210626	Paragneiss à biotite ± grenat dérivé de wacke ± arénite
456285	18	512112	5756067	M4	S3	BO	11B	11G		20210626	Paragneiss à biotite ± grenat dérivé de wacke ± arénite
456288	18	513786	5755003	M4	S3	BO	11B	11G	BO GR	20210626	Paragneiss à biotite ± grenat dérivé de wacke ± arénite
456290	18	509064	5752091	M4	S3	GR BO	11G	11B	GR	20210626	Paragneiss à biotite ± grenat dérivé de wacke ± arénite
456294	18	521321	5748002	M4	S3	BO GR	11G	11B	GR	20210628	Paragneiss à biotite ± grenat dérivé de wacke ± arénite
456297	18	521075	5749849	M4		BO	11G	11B	GR	20210628	Paragneiss à biotite ± grenat dérivé de wacke ± arénite
456298	18	521007	5749629	M4			11G	11B		20210628	Paragneiss à biotite ± grenat dérivé de wacke ± arénite
456308	18	513526	5756003	M4	S1E	BO HB				20210628	Paragneiss à biotite ± grenat dérivé de wacke ± arénite
456312	18	514597	5755312	M4	S3	GR BO	11G	11B	GR BO	20210628	Paragneiss à biotite ± grenat dérivé de wacke ± arénite
456314	18	515925	5755032	M4	S3	HB BO GR	11G		MV GR BO	20210628	Paragneiss à biotite ± grenat dérivé de wacke ± arénite
456327	18	517532	5758194	M4	S3	BO GR	11B		GR BO	20210629	Paragneiss à biotite ± grenat dérivé de wacke ± arénite
456328	18	517433	5758056	M4	S3	GR BO	11G	11B	MV	20210629	Paragneiss à biotite ± grenat dérivé de wacke ± arénite
456332	18	523851	5757646	M4	S3	GR BO	11G	11B	GR BO	20210629	Paragneiss à biotite ± grenat dérivé de wacke ± arénite
456340	18	521615	5757484	M4	S3	GR BO	11B		BO GR	20210629	Paragneiss à biotite ± grenat dérivé de wacke ± arénite
456353	18	524984	5745773	M4	T2	GR BO	11G	11B	BO MV	20210630	Paragneiss à biotite ± grenat dérivé de wacke ± arénite
456354	18	524820	5746129	M4		SM	11G	11B		20210630	Paragneiss à biotite ± grenat dérivé de wacke ± arénite
456362	18	524493	5747396	M4	S3	BO	V3B	M16	HB	20210630	Paragneiss à biotite ± grenat dérivé de wacke ± arénite
456365	18	522920	5746063	M4	S3	BO	11B			20210630	Paragneiss à biotite ± grenat dérivé de wacke ± arénite
456376	18	526750	5746983	M4	BO	BO	11B	11G	BO	20210702	Paragneiss à biotite ± grenat dérivé de wacke ± arénite
456390	18	526128	5747068	M4			11B			20210702	Paragneiss à biotite ± grenat dérivé de wacke ± arénite
456392	18	525891	5746926	M4			11B			20210702	Paragneiss à biotite ± grenat dérivé de wacke ± arénite
456398	18	526726	5746044	M4	S3	BO	11B		GR	20210702	Paragneiss à biotite ± grenat dérivé de wacke ± arénite
456430	18	518032	5750093	M4	S3	BO	11G	11B		20210707	Paragneiss à biotite ± grenat dérivé de wacke ± arénite
456432	18	519215	5750277	M4	S3	BO	11G	11B	BO GR	20210707	Paragneiss à biotite ± grenat dérivé de wacke ± arénite
456444	18	525552	5746968	M4	S3	BO	11G			20210710	Paragneiss à biotite ± grenat dérivé de wacke ± arénite
456456	18	526666	5757503	M4	M22	GR BO	11B		GR BO	20210723	Paragneiss à biotite ± grenat dérivé de wacke ± arénite
456459	18	528342	5756356	M4	S3	BO	11B			20210723	Paragneiss à biotite ± grenat dérivé de wacke ± arénite
456470	18	521253	5760975	M4	S3	BO MG	11B	11G		20210724	Paragneiss à biotite ± grenat dérivé de wacke ± arénite
456489	18	519541	5757141	M4	S3	BO	11B	11G	BO	20210727	Paragneiss à biotite ± grenat dérivé de wacke ± arénite
456515	18	515846	5757694	M4	M22		11B			20210727	Paragneiss à biotite ± grenat dérivé de wacke ± arénite
456380	18	527417	5746911	S9B		PV	S9D		GN	20210702	Formation de fer à oxydes et formation de fer à silicates
456442	18	525498	5747192	V1D			11G			20210710	Roche volcanoclastique felsique, localement intermédiaire
456443	18	525461	5747133	V2J	V1D		V3B	M16	HB	20210710	Roche volcanique intermédiaire
456145	18	526951	5743216	V3B	M16	HB	11G	11B	BO HB	20210610	Basalte amphibolitisé; niveaux de roches volcaniques ultramafiques
456251	18	505782	5752713	V3B	M16					20210623	Basalte amphibolitisé; niveaux de roches volcaniques ultramafiques
456448	18	527520	5745373	V3B	M16	HB				20210710	Basalte amphibolitisé; niveaux de roches volcaniques ultramafiques
456146	18	526735	5743249	V3F	M16	HB AC TM TC PH				20210610	Basalte amphibolitisé; niveaux de roches volcaniques ultramafiques
456445	18	527135	5745886	V4A			11G			20210710	Basalte amphibolitisé; niveaux de roches volcaniques ultramafiques

JORC Code, 2012 Edition – Table 1

Section 1 Sampling Techniques and Data

(Criteria in this section apply to all succeeding sections.)

Criteria	JORC Code explanation	Commentary
Sampling techniques	<ul style="list-style-type: none"> Nature and quality of sampling (eg cut channels, random chips, or specific specialised industry standard measurement tools appropriate to the minerals under investigation, such as down hole gamma sondes, or handheld XRF instruments, etc). These examples should not be taken as limiting the broad meaning of sampling. Include reference to measures taken to ensure sample representivity and the appropriate calibration of any measurement tools or systems used. Aspects of the determination of mineralisation that are Material to the Public Report. In cases where ‘industry standard’ work has been done this would be relatively simple (eg ‘reverse circulation drilling was used to obtain 1 m samples from which 3 kg was pulverised to produce a 30 g charge for fire assay’). In other cases more explanation may be required, such as where there is coarse gold that has inherent sampling problems. Unusual commodities or mineralisation types (eg submarine nodules) may warrant disclosure of detailed information. 	<ul style="list-style-type: none"> No sampling completed by the Company. Work pertaining to the release has involved geological interpretation of publicly available datasets which are available through sigeom.mines.gouv.qc.ca Ministère des Ressources naturelles et des Forêts (MERN), the Quebec geological survey, has completed mapping with rock types descriptions made publicly available and provided in Appendix I. Sample locations are outlined in Appendix 1. No assay data is available for MERN rock samples referred to in the body of the text. The Company is to complete reconnaissance work to verify publicly available data.
Drilling techniques	<ul style="list-style-type: none"> Drill type (eg core, reverse circulation, open-hole hammer, rotary air blast, auger, Bangka, sonic, etc) and details (eg core diameter, triple or standard tube, depth of diamond tails, face-sampling bit or other type, whether core is oriented and if so, by what method, etc). 	<ul style="list-style-type: none"> No drilling completed.
Drill sample recovery	<ul style="list-style-type: none"> Method of recording and assessing core and chip sample recoveries and results assessed. Measures taken to maximise sample recovery and ensure representative nature of the samples. Whether a relationship exists between sample recovery and grade and whether sample bias may have occurred due to preferential loss/gain of fine/coarse material. 	<ul style="list-style-type: none"> Not applicable
Logging	<ul style="list-style-type: none"> Whether core and chip samples have been geologically and geotechnically logged to a level of detail to support 	<ul style="list-style-type: none"> Not applicable

Criteria	JORC Code explanation	Commentary
	<p>appropriate Mineral Resource estimation, mining studies and metallurgical studies.</p> <ul style="list-style-type: none"> • Whether logging is qualitative or quantitative in nature. Core (or costean, channel, etc) photography. • The total length and percentage of the relevant intersections logged. 	
Sub-sampling techniques and sample preparation	<ul style="list-style-type: none"> • If core, whether cut or sawn and whether quarter, half or all core taken. • If non-core, whether riffled, tube sampled, rotary split, etc and whether sampled wet or dry. • For all sample types, the nature, quality and appropriateness of the sample preparation technique. • Quality control procedures adopted for all sub-sampling stages to maximise representivity of samples. • Measures taken to ensure that the sampling is representative of the in situ material collected, including for instance results for field duplicate/second-half sampling. • Whether sample sizes are appropriate to the grain size of the material being sampled. 	<ul style="list-style-type: none"> • Not applicable
Quality of assay data and laboratory tests	<ul style="list-style-type: none"> • The nature, quality and appropriateness of the assaying and laboratory procedures used and whether the technique is considered partial or total. • For geophysical tools, spectrometers, handheld XRF instruments, etc, the parameters used in determining the analysis including instrument make and model, reading times, calibrations factors applied and their derivation, etc. • Nature of quality control procedures adopted (eg standards, blanks, duplicates, external laboratory checks) and whether acceptable levels of accuracy (ie lack of bias) and precision have been established. 	<ul style="list-style-type: none"> • Geophysical datasets and aerial imagery was sourced from Ministère des Ressources naturelles et des Forêts (MERN), the Quebec geological survey. • Interpretation of the geophysical dataset and aerial imagery was completed by the Competent Person, • No new geophysical or geological data has been collected at this stage. • MERN has completed mapping with rock type descriptions and geological maps made publicly available through sigeom.mines.gouv.qc.ca • The Company is to complete reconnaissance work to verify publicly available data.
Verification of sampling and assaying	<ul style="list-style-type: none"> • The verification of significant intersections by either independent or alternative company personnel. • The use of twinned holes. • Documentation of primary data, data entry procedures, data verification, data storage (physical and electronic) protocols. • Discuss any adjustment to assay data. 	<ul style="list-style-type: none"> • Not applicable

Criteria	JORC Code explanation	Commentary
Location of data points	<ul style="list-style-type: none"> • Accuracy and quality of surveys used to locate drill holes (collar and down-hole surveys), trenches, mine workings and other locations used in Mineral Resource estimation. • Specification of the grid system used. • Quality and adequacy of topographic control. 	<ul style="list-style-type: none"> • Not applicable
Data spacing and distribution	<ul style="list-style-type: none"> • Data spacing for reporting of Exploration Results. • Whether the data spacing and distribution is sufficient to establish the degree of geological and grade continuity appropriate for the Mineral Resource and Ore Reserve estimation procedure(s) and classifications applied. • Whether sample compositing has been applied. 	<ul style="list-style-type: none"> • Not applicable
Orientation of data in relation to geological structure	<ul style="list-style-type: none"> • Whether the orientation of sampling achieves unbiased sampling of possible structures and the extent to which this is known, considering the deposit type. • If the relationship between the drilling orientation and the orientation of key mineralised structures is considered to have introduced a sampling bias, this should be assessed and reported if material. 	<ul style="list-style-type: none"> • Not applicable
Sample security	<ul style="list-style-type: none"> • The measures taken to ensure sample security. 	<ul style="list-style-type: none"> • Not applicable
Audits or reviews	<ul style="list-style-type: none"> • The results of any audits or reviews of sampling techniques and data. 	<ul style="list-style-type: none"> • The Company continues to undertake due diligence on the Project. • Review of geological and geophysical maps and imagery was completed by the competent person.