

Aircore Drilling Planned for Fortnum Project

Highlights:

- The Company is planning to undertake a ~5,000m aircore drilling program at its 100% Fortnum gold project.
- The 50-hole program will test anomalous gold in basement intersected by previous explorers where the results were not adequately followed up.
- Historical gold intercepts at Fortnum include:
 - 3m @ 2.43 g/t from 2m and 5m @ 4.71 g/t from 35m in FRB3032
 - 8m @ 2.41 g/t from 52m in FRB1117
 - 2m @ 5.31 g/t from 2m in FRB1068
 - 9m @ 1.07 g/t from 33m in FRB3038
 - 5m @ 1.24 g/t from 63m in 92CARB041
 - 3m @ 1.74 g/t from 20m in FRB3035
- The proposed aircore drilling program at Fortnum will likely commence during Q2, with a follow program depending on results to define targets for RC drilling.
- The Company is engaging with the traditional owners of the Fortnum area with a view to finalising an agreement to enable exploration work to proceed.

Nelson Resources Limited (ASX: NES) (Nelson or the Company) is pleased to provide an exploration update for its 100% owned Fortnum project. The project is adjacent to the Westgold operations at Fortnum Gold Mine, 130 km north-northwest of Meekatharra, Western Australia (Figure 1).

The Fortnum Project consists of two exploration licences, Billara (E52/3695, granted 2019) and Billara Bore (E52/4133, granted 2022), 100% owned by Nelson Resources. The project is entirely covered by a single native title claim by the Jidi Jidi people.

Previous work at Nelson's Fortnum project includes surface sampling and drilling programs that date back to the 1980's. The initial work completed in the early-1990's identified a gold-in-soil anomaly across the central-north of what is now Nelson's Fortnum Project. These surface soil anomalies were drilled with RAB drilling up to the mid-1990's and a number of anomalous intersections were returned (Figure 2).

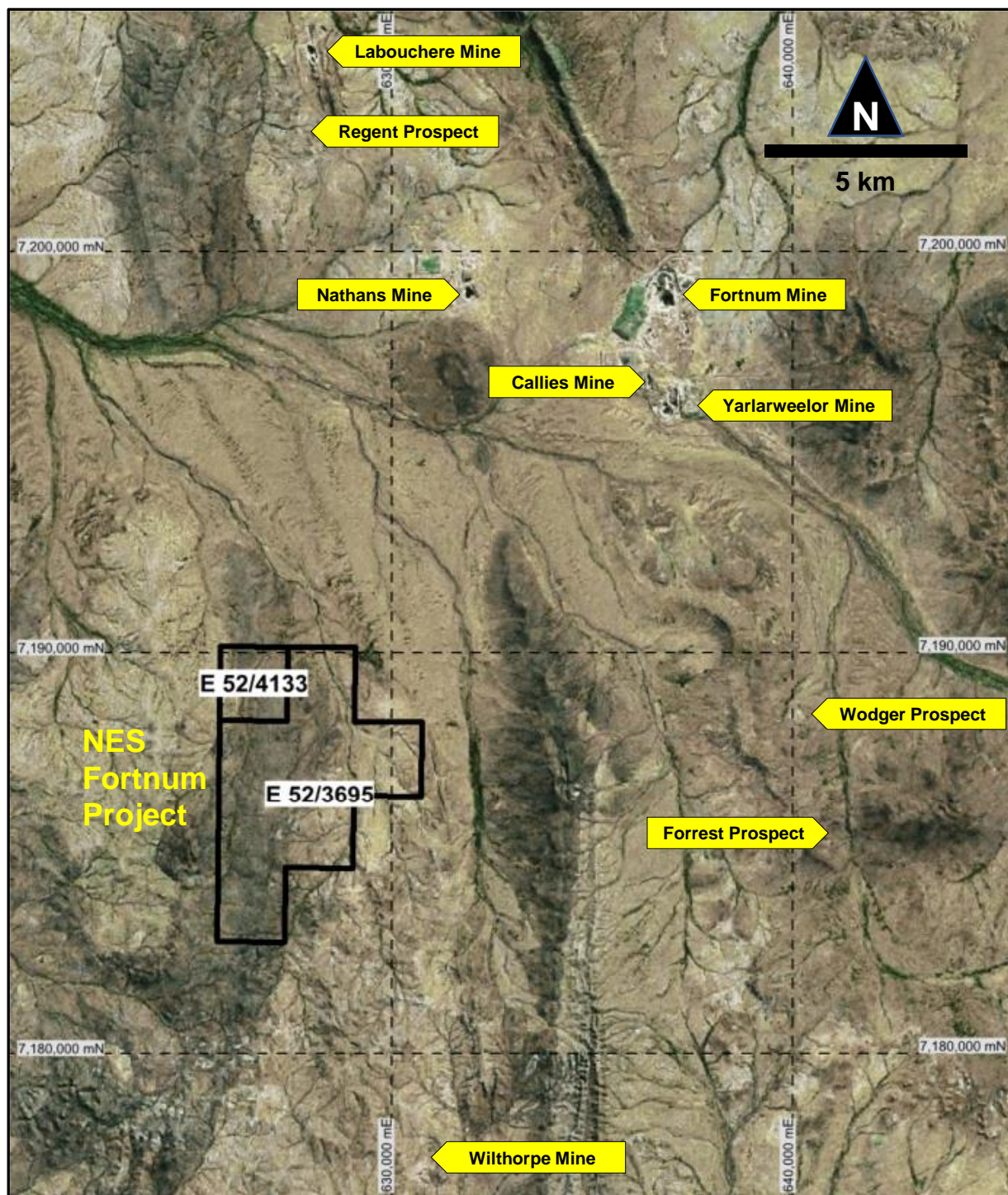


Figure 1: Nelson Resources, Fortnum Project location on aerial photograph showing regional mines and reported resources.

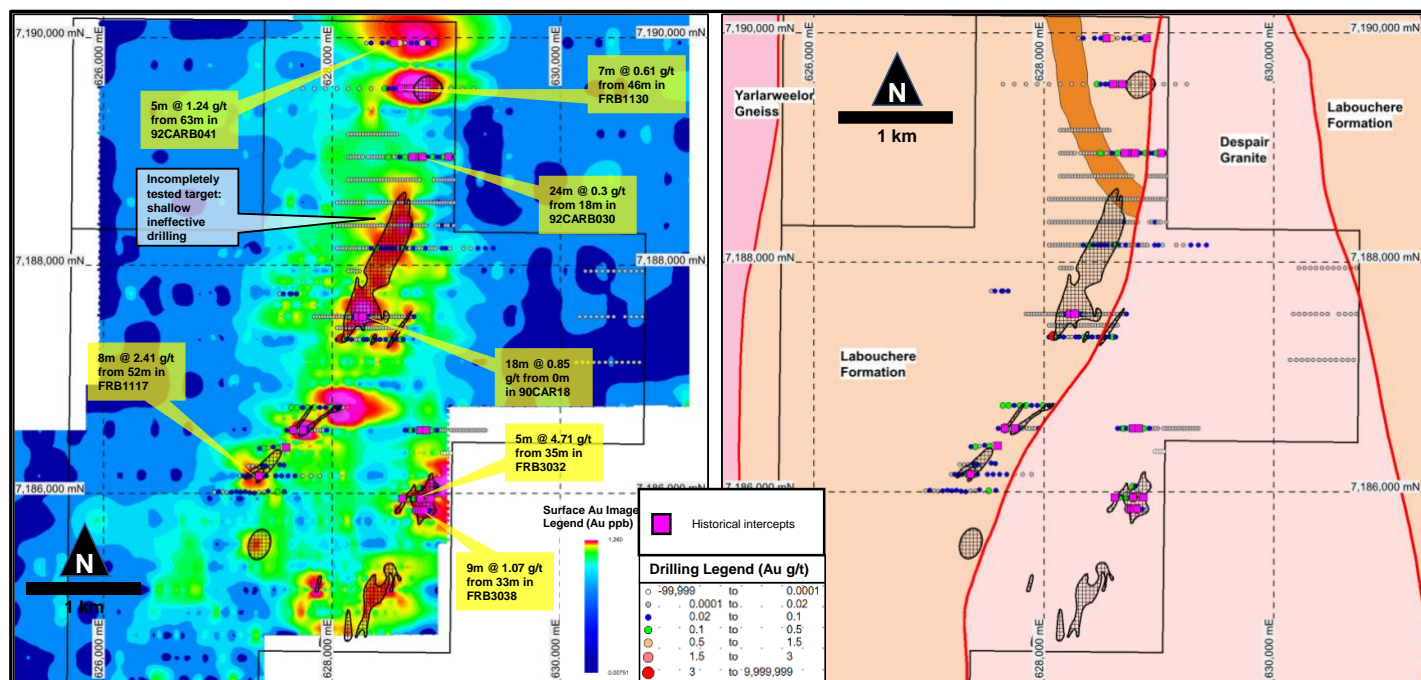


Figure 2: Comparison of significant drilling intersections on soil Au image against drill holes and soil Au targets on interpreted geology.

The work completed by previous explorers defined two corridors of anomalous gold-in-soil: in the centre and on eastern side of the tenement. Several RAB drilling programs tested under these areas, during the 1990's, and intersected anomalous gold in basement. Several areas were tested with set-depth, shallow holes which did not test the full depth of the weathered profile. These areas represent an opportunity to rapidly advance the project.

The Company is confident that the previous work is valid and that the work has defined a target area which is incompletely tested. The Company will complete a staged approach to drilling these targets commencing with a 50 hole, aircore drilling program (Figure 3).

The drilling is designed to extend and confirm the existing anomalous gold zones and provide the basis to develop RC drilling targets.

The Company is engaging with the native title holders regarding a heritage clearance program for the aircore drilling to proceed. The Company expects drilling to be commencing in Q2, 2023.

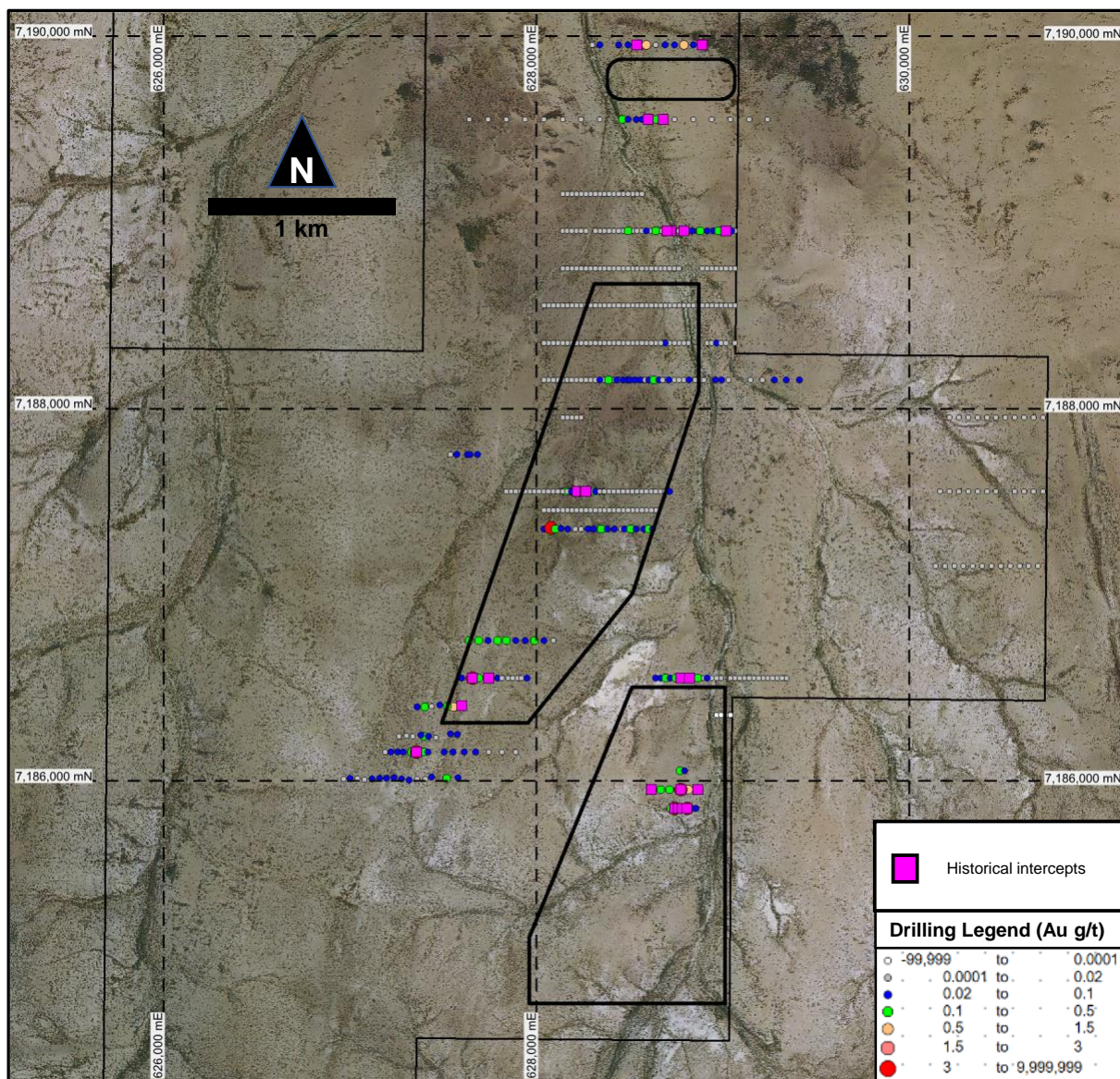


Figure 3: Drilling by Au (g/t) showing areas of aircore drilling on aerial photograph.

This announcement is approved for release by the Board of Directors.

For further information please contact:

Nicolas Ong

Director

info@nelsonresources.com.au

Dan Smith

Director



ABOUT NELSON RESOURCES

Nelson Resources is an exploration company with a significant and highly prospective 1,488km² tenure holding (Granted and Pending). The key focus for the Company is its 1,220km² Woodline Project (Granted and Pending).



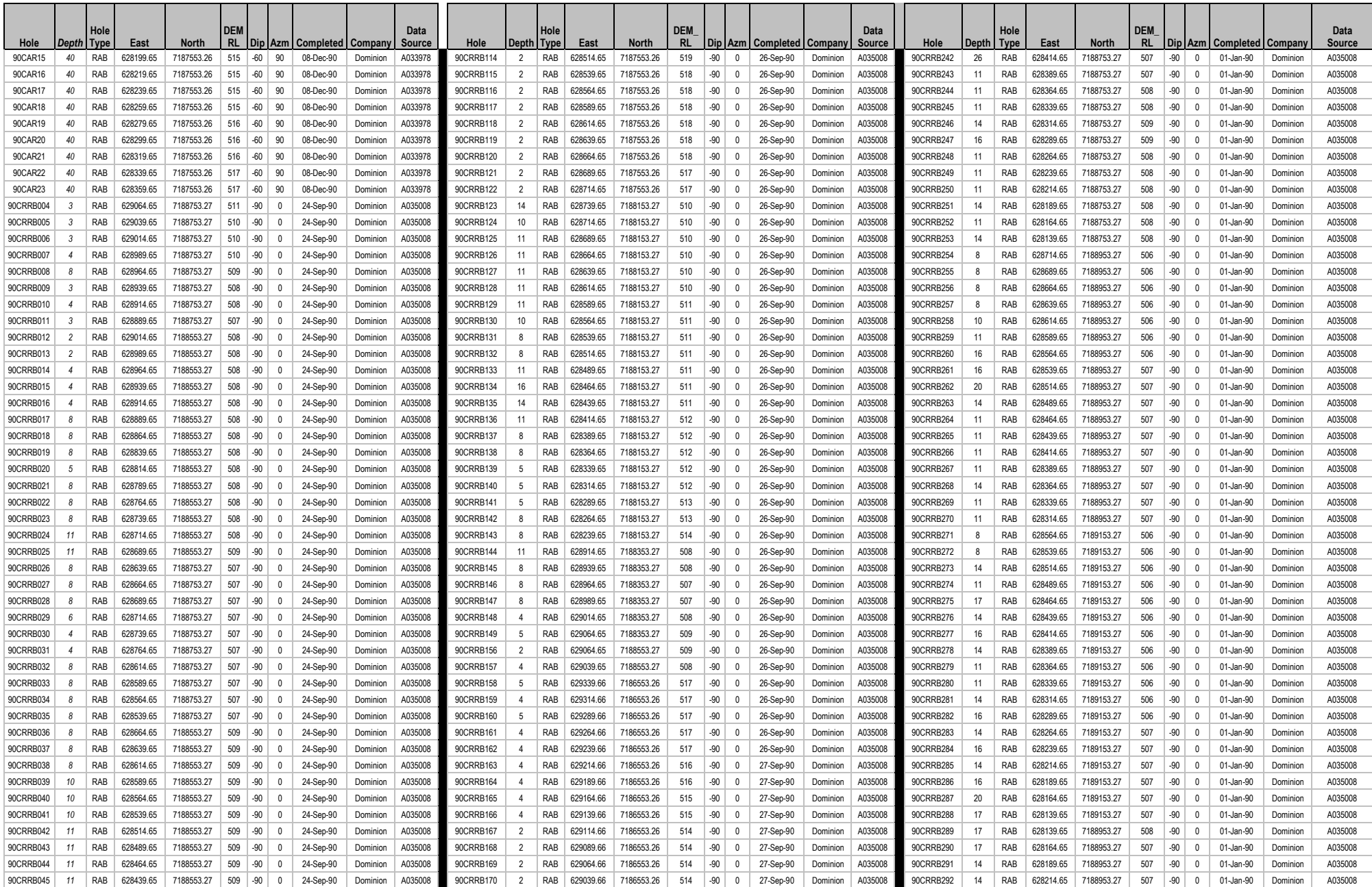
Figure 4: Project Locations.

Competent Persons Statement

The information in this report that relates to Exploration Results is based on information compiled by Mr Derek Shaw, a geologist employed by Nelson Resources Limited. Mr Shaw is a Member Australian Institute of Geoscientists and has sufficient experience that is relevant to this style of mineralisation and type of deposit under consideration and to the activity that is being reported on to qualify as a Competent Person as defined in the 2012 edition of the "Australasian Code for Reporting of Exploration Results, Mineral Resources and Ore Reserves". Mr Shaw consents to the inclusion in the report of the matters in the form and context in which it appears.



Hole	Depth	Hole Type	East	North	DEM_RL	Dip	Azm	Completed	Company	Data Source	Hole	Depth	Hole Type	East	North	DEM_RL	Dip	Azm	Completed	Company	Data Source	Hole	Depth	Hole Type	East	North	DEM_RL	Dip	Azm	Completed	Company	Data Source
1050	2	RAB	630714.66	7187953.27	520	-90	0	15-May-89	Dominion	A031593	90CRRB066	3	RAB	628539.65	7187453.26	519	-90	0	25-Sep-90	Dominion	A035008	90CRRB194	10	RAB	628214.65	7187953.27	513	-90	0	01-Jan-90	Dominion	A035008
1051	2	RAB	630664.66	7187953.27	519	-90	0	15-May-89	Dominion	A031593	90CRRB067	2	RAB	628514.65	7187453.26	519	-90	0	25-Sep-90	Dominion	A035008	90CRRB195	10	RAB	628189.65	7187953.27	513	-90	0	01-Jan-90	Dominion	A035008
1052	2	RAB	630614.66	7187953.27	519	-90	0	15-May-89	Dominion	A031593	90CRRB068	2	RAB	628489.65	7187453.26	519	-90	0	25-Sep-90	Dominion	A035008	90CRRB196	11	RAB	628164.65	7187953.27	513	-90	0	01-Jan-90	Dominion	A035008
1053	2	RAB	630564.66	7187953.27	519	-90	0	15-May-89	Dominion	A031593	90CRRB069	2	RAB	628464.65	7187453.26	519	-90	0	25-Sep-90	Dominion	A035008	90CRRB197	11	RAB	628139.65	7187953.27	513	-90	0	01-Jan-90	Dominion	A035008
1054	2	RAB	630514.66	7187953.27	518	-90	0	15-May-89	Dominion	A031593	90CRRB070	2	RAB	628439.65	7187453.26	519	-90	0	25-Sep-90	Dominion	A035008	90CRRB198	5	RAB	628114.65	7187953.27	513	-90	0	01-Jan-90	Dominion	A035008
1055	2	RAB	630464.66	7187953.27	518	-90	0	15-May-89	Dominion	A031593	90CRRB071	2	RAB	628414.65	7187453.26	519	-90	0	25-Sep-90	Dominion	A035008	90CRRB199	4	RAB	628089.65	7188153.27	513	-90	0	01-Jan-90	Dominion	A035008
1056	2	RAB	630414.66	7187953.27	517	-90	0	15-May-89	Dominion	A031593	90CRRB072	2	RAB	628389.65	7187453.26	519	-90	0	25-Sep-90	Dominion	A035008	90CRRB200	5	RAB	628064.65	7188153.27	513	-90	0	01-Jan-90	Dominion	A035008
1057	2	RAB	630364.66	7187953.27	517	-90	0	15-May-89	Dominion	A031593	90CRRB073	3	RAB	628364.65	7187453.26	518	-90	0	25-Sep-90	Dominion	A035008	90CRRB201	4	RAB	628039.65	7188153.27	513	-90	0	01-Jan-90	Dominion	A035008
1058	4	RAB	630314.66	7187953.27	516	-90	0	15-May-89	Dominion	A031593	90CRRB074	3	RAB	628339.65	7187453.26	518	-90	0	25-Sep-90	Dominion	A035008	90CRRB202	11	RAB	628814.65	7188353.27	509	-90	0	01-Jan-90	Dominion	A035008
1059	2	RAB	630264.66	7187953.27	515	-90	0	15-May-89	Dominion	A031593	90CRRB075	2	RAB	628314.65	7187453.26	518	-90	0	25-Sep-90	Dominion	A035008	90CRRB203	14	RAB	628789.65	7188353.27	509	-90	0	01-Jan-90	Dominion	A035008
1060	2	RAB	630214.66	7187953.27	515	-90	0	15-May-89	Dominion	A031593	90CRRB076	2	RAB	628289.65	7187453.26	517	-90	0	26-Sep-90	Dominion	A035008	90CRRB204	10	RAB	628764.65	7188353.27	509	-90	0	01-Jan-90	Dominion	A035008
1065	2	RAB	630714.66	7187553.27	521	-90	0	15-May-89	Dominion	A031593	90CRRB077	2	RAB	628264.65	7187453.26	517	-90	0	26-Sep-90	Dominion	A035008	90CRRB205	10	RAB	628739.65	7188353.27	509	-90	0	01-Jan-90	Dominion	A035008
1066	2	RAB	630664.66	7187553.27	520	-90	0	15-May-89	Dominion	A031593	90CRRB078	2	RAB	628239.65	7187453.26	517	-90	0	26-Sep-90	Dominion	A035008	90CRRB206	10	RAB	628714.65	7188353.27	509	-90	0	01-Jan-90	Dominion	A035008
1067	2	RAB	630614.66	7187553.27	519	-90	0	15-May-89	Dominion	A031593	90CRRB079	2	RAB	628214.65	7187453.26	517	-90	0	26-Sep-90	Dominion	A035008	90CRRB207	8	RAB	628689.65	7188353.27	509	-90	0	01-Jan-90	Dominion	A035008
1068	2	RAB	630564.66	7187553.27	518	-90	0	15-May-89	Dominion	A031593	90CRRB080	2	RAB	628189.65	7187453.26	517	-90	0	26-Sep-90	Dominion	A035008	90CRRB208	8	RAB	628664.65	7188353.27	509	-90	0	01-Jan-90	Dominion	A035008
1075	2	RAB	630689.66	7187153.26	524	-90	0	15-May-89	Dominion	A031593	90CRRB081	2	RAB	628164.65	7187453.26	517	-90	0	26-Sep-90	Dominion	A035008	90CRRB209	8	RAB	628639.65	7188353.27	509	-90	0	01-Jan-90	Dominion	A035008
1076	2	RAB	630639.66	7187153.26	524	-90	0	15-May-89	Dominion	A031593	90CRRB082	2	RAB	628139.65	7187453.26	517	-90	0	26-Sep-90	Dominion	A035008	90CRRB210	8	RAB	628614.65	7188353.27	509	-90	0	01-Jan-90	Dominion	A035008
1077	2	RAB	630589.66	7187153.26	524	-90	0	15-May-89	Dominion	A031593	90CRRB083	2	RAB	628114.65	7187453.26	517	-90	0	26-Sep-90	Dominion	A035008	90CRRB211	8	RAB	628589.65	7188353.27	509	-90	0	01-Jan-90	Dominion	A035008
1078	2	RAB	630539.66	7187153.26	524	-90	0	15-May-89	Dominion	A031593	90CRRB084	4	RAB	628089.65	7187453.26	517	-90	0	26-Sep-90	Dominion	A035008	90CRRB212	5	RAB	628564.65	7188353.27	508	-90	0	01-Jan-90	Dominion	A035008
1079	2	RAB	630489.66	7187153.26	523	-90	0	15-May-89	Dominion	A031593	90CRRB085	4	RAB	628064.65	7187453.26	518	-90	0	26-Sep-90	Dominion	A035008	90CRRB213	14	RAB	628539.65	7188353.27	508	-90	0	01-Jan-90	Dominion	A035008
1080	2	RAB	630439.66	7187153.26	522	-90	0	15-May-89	Dominion	A031593	90CRRB086	4	RAB	628039.65	7187453.26	518	-90	0	26-Sep-90	Dominion	A035008	90CRRB214	10	RAB	628514.65	7188353.27	508	-90	0	01-Jan-90	Dominion	A035008
1081	2	RAB	630389.66	7187153.26	522	-90	0	15-May-89	Dominion	A031593	90CRRB087	5	RAB	627839.65	7187553.26	519	-90	0	26-Sep-90	Dominion	A035008	90CRRB215	11	RAB	628489.65	7188353.27	508	-90	0	01-Jan-90	Dominion	A035008
1082	2	RAB	630339.66	7187153.26	521	-90	0	15-May-89	Dominion	A031593	90CRRB088	4	RAB	627864.65	7187553.26	519	-90	0	26-Sep-90	Dominion	A035008	90CRRB216	11	RAB	628464.65	7188353.27	508	-90	0	01-Jan-90	Dominion	A035008
1083	2	RAB	630289.66	7187153.26	520	-90	0	15-May-89	Dominion	A031593	90CRRB089	4	RAB	627889.65	7187553.26	519	-90	0	26-Sep-90	Dominion	A035008	90CRRB217	11	RAB	628439.65	7188353.27	508	-90	0	01-Jan-90	Dominion	A035008
1084	2	RAB	630239.66	7187153.26	518	-90	0	15-May-89	Dominion	A031593	90CRRB090	4	RAB	627914.65	7187553.26	518	-90	0	26-Sep-90	Dominion	A035008	90CRRB218	11	RAB	628414.65	7188353.27	509	-90	0	01-Jan-90	Dominion	A035008
1085	2	RAB	630189.66	7187153.26	517	-90	0	15-May-89	Dominion	A031593	90CRRB091	4	RAB	627939.65	7187553.26	518	-90	0	26-Sep-90	Dominion	A035008	90CRRB219	14	RAB	628389.65	7188353.27	509	-90	0	01-Jan-90	Dominion	A035008
1086	2	RAB	630139.66	7187153.26	516	-90	0	15-May-89	Dominion	A031593	90CRRB092	2	RAB	627964.65	7187553.26	518	-90	0	26-Sep-90	Dominion	A035008	90CRRB220	10	RAB	628364.65	7188353.27	510	-90	0	01-Jan-90	Dominion	A035008
1087	2	RAB	630464.66	7187553.27	518	-90	0	15-May-89	Dominion	A031593	90CRRB093	4	RAB	627989.65	7187553.26	517	-90	0	26-Sep-90	Dominion	A035008	90CRRB221	10	RAB	628339.65	7188353.27	510	-90	0	01-Jan-90	Dominion	A035008
1088	2	RAB	630414.66	7187553.27	518	-90	0	15-May-89	Dominion	A031593	90CRRB094	4	RAB	628014.65	7187553.26	517	-90	0	26-Sep-90	Dominion	A035008	90CRRB222	8	RAB	628314.65	7188353.27	511	-90	0	01-Jan-90	Dominion	A035008
1089	2	RAB	630364.66	7187553.27	518	-90	0	15-May-89	Dominion	A031593	90CRRB095	5	RAB	628039.65	7187553.26	517	-90	0	26-Sep-90	Dominion	A035008	90CRRB223	10	RAB	628289.65	7188353.27	511	-90	0	01-Jan-90	Dominion	A035008
1090	2	RAB	630314.66	7187553.27	518	-90	0	15-May-89	Dominion	A031593	90CRRB096	4	RAB	628064.65	7187553.26	517	-90	0	26-Sep-90	Dominion	A035008	90CRRB224	11	RAB	628264.65	7188353.27	513	-90	0	01-Jan-90	Dominion	A035008
1091	2	RAB	630264.66	7187553.27	517	-90	0	15-May-89	Dominion	A031593	90CRRB097	4	RAB	628089.65	7187553.26	516	-90	0	26-Sep-90	Dominion	A035008	90CRRB225	11	RAB	628239.65	7188353.27	513	-90	0	01-Jan-90	Dominion	A035008
1092	2	RAB	630214.66	7187553.27	517	-90	0	15-May-89	Dominion	A031593	90CRRB098	4	RAB	628114.65	7187553.26	516	-90	0	26-Sep-90	Dominion	A035008	90CRRB226	11	RAB	628214.65	7188353.27	513	-90	0	01-Jan-90	Dominion	A035008
1093	2	RAB	630164.66	7187553.27	517	-90	0	15-May-89	Dominion	A031593	90CRRB099	4	RAB	628139.65	7187553.26	515	-90	0	26-Sep-90	Dominion	A035008	90CRRB227	14	RAB	628189.65	7188353.27	513	-90	0	01-Jan-90	Dominion	A035008
90CAR01	40	RAB	628239.65	7187653.26	515	-60	90	25-Sep-90	Dominion	A033978	90CRRB100	4	RAB	628164.65	7187553.26	515	-90	0	26-Sep-90	Dominion	A035008	90CRRB228	10	RAB	628164.65	7188353.27	513	-90	0	01-Jan-90	Dominion	A035008
90CAR02	36	RAB	628259.65	7187653.26	515	-60	90	25-Sep-90	Dominion	A033978	90CRRB101	4	RAB	628189.65	7187553.26	515	-90	0	26-Sep-90	Dominion	A035008	90CRRB229	8	RAB	628139.65	7188353.27	513	-90	0	01-Jan-90	Dominion	A035008
90CAR03	44	RAB	628277.65	7187653.26	515	-60	90	25-Sep-90	Dominion	A033978	90CRRB102	2	RAB	628214.65	7187553.26	515	-90	0	26-Sep-90	Dominion	A035008	90CRRB230	10	RAB	628114.65	7188353.27	513	-90	0	01-Jan-90	Dominion	A035008
90CAR04	40	RAB	628299.65	7187653.26	515	-60	90	25-Sep-90	Dominion	A033978	90CRRB103	2	RAB	628239.65	7187553.26	515	-90	0	26-Sep-90	Dominion	A035008	90CRRB231	8	RAB	628089.65	7188353.27	513	-90	0	01-Jan-90	Dominion	A035008
90CAR05	40	RAB	628319.65	7187653.26	515	-60	90	25-Sep-90	Dominion	A033978	90CRRB104	2	RAB	628264.65	7187553.26	515	-90	0	26-Sep-90	Dominion	A035008	90CRRB232	10	RAB	628064.65	7188353.27	513	-90				

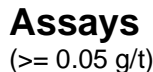




Hole	Depth	Hole Type	East	North	DEM RL	Dip	Azm	Completed	Company	Data Source	Hole	Depth	Hole Type	East	North	DEM RL	Dip	Azm	Completed	Company	Data Source	Hole	Depth	Hole Type	East	North	DEM RL	Dip	Azm	Completed	Company	Data Source
90CRRB046	11	RAB	628414.65	7188553.27	509	-90	0	24-Sep-90	Dominion	A035008	90CRRB171	4	RAB	628989.66	7186553.26	514	-90	0	27-Sep-90	Dominion	A035008	90CRRB293	14	RAB	628239.65	7188953.27	507	-90	0	01-Jan-90	Dominion	A035008
90CRRB047	10	RAB	628389.65	7188553.27	509	-90	0	24-Sep-90	Dominion	A035008	90CRRB172	4	RAB	628964.66	7186553.26	514	-90	0	27-Sep-90	Dominion	A035008	90CRRB294	14	RAB	628264.65	7188953.27	507	-90	0	01-Jan-90	Dominion	A035008
90CRRB048	10	RAB	628364.65	7188553.27	510	-90	0	24-Sep-90	Dominion	A035008	90CRRB173	2	RAB	628939.66	7186553.26	514	-90	0	27-Sep-90	Dominion	A035008	90CRRB298	1	RAB	629064.65	7188953.27	512	-90	0	01-Jan-90	Dominion	A035008
90CRRB049	10	RAB	628339.65	7188553.27	510	-90	0	24-Sep-90	Dominion	A035008	90CRRB174	2	RAB	628914.66	7186553.26	515	-90	0	27-Sep-90	Dominion	A035008	90CRRB299	2	RAB	629039.65	7188953.27	512	-90	0	01-Jan-90	Dominion	A035008
90CRRB050	10	RAB	628314.65	7188553.27	510	-90	0	24-Sep-90	Dominion	A035008	90CRRB175	2	RAB	628889.66	7186553.26	516	-90	0	27-Sep-90	Dominion	A035008	90CRRB300	3	RAB	629014.65	7188953.27	512	-90	0	01-Jan-90	Dominion	A035008
90CRRB051	10	RAB	628289.65	7188553.27	510	-90	0	24-Sep-90	Dominion	A035008	90CRRB176	2	RAB	628864.66	7186553.26	516	-90	0	27-Sep-90	Dominion	A035008	90CRRB301	2	RAB	628989.65	7188953.27	511	-90	0	01-Jan-90	Dominion	A035008
90CRRB052	10	RAB	628264.65	7188553.27	510	-90	0	24-Sep-90	Dominion	A035008	90CRRB177	4	RAB	628839.66	7186553.26	516	-90	0	27-Sep-90	Dominion	A035008	90CRRB302	2	RAB	628964.65	7188953.27	510	-90	0	01-Jan-90	Dominion	A035008
90CRRB053	11	RAB	628239.65	7188553.27	511	-90	0	24-Sep-90	Dominion	A035008	90CRRB178	4	RAB	628814.65	7186553.26	516	-90	0	27-Sep-90	Dominion	A035008	90CRRB303	2	RAB	628939.65	7188953.27	509	-90	0	01-Jan-90	Dominion	A035008
90CRRB054	11	RAB	628214.65	7188553.27	511	-90	0	24-Sep-90	Dominion	A035008	90CRRB179	4	RAB	628789.65	7186553.26	517	-90	0	27-Sep-90	Dominion	A035008	90CRRB304	2	RAB	628914.65	7188953.27	509	-90	0	01-Jan-90	Dominion	A035008
90CRRB055	11	RAB	628189.65	7188553.27	511	-90	0	24-Sep-90	Dominion	A035008	90CRRB180	2	RAB	628764.65	7186553.26	517	-90	0	27-Sep-90	Dominion	A035008	90CRRB305	2	RAB	628889.65	7188953.27	508	-90	0	01-Jan-90	Dominion	A035008
90CRRB056	11	RAB	628164.65	7188553.27	511	-90	0	24-Sep-90	Dominion	A035008	90CRRB181	2	RAB	628739.65	7186553.26	517	-90	0	27-Sep-90	Dominion	A035008	90CRRB306	2	RAB	628864.65	7188953.27	508	-90	0	01-Jan-90	Dominion	A035008
90CRRB057	10	RAB	628139.65	7188553.27	512	-90	0	24-Sep-90	Dominion	A035008	90CRRB182	2	RAB	628714.65	7186553.26	517	-90	0	27-Sep-90	Dominion	A035008	90CRRB307	2	RAB	628839.65	7188953.27	508	-90	0	01-Jan-90	Dominion	A035008
90CRRB058	5	RAB	628139.65	7188153.27	513	-90	0	24-Sep-90	Dominion	A035008	90CRRB183	2	RAB	628689.65	7186553.26	517	-90	0	27-Sep-90	Dominion	A035008	90CRRB308	2	RAB	628814.65	7188953.27	508	-90	0	01-Jan-90	Dominion	A035008
90CRRB059	8	RAB	628164.65	7188153.27	513	-90	0	24-Sep-90	Dominion	A035008	90CRRB184	2	RAB	628664.65	7186553.26	517	-90	0	27-Sep-90	Dominion	A035008	90CRRB309	3	RAB	628789.65	7188953.27	507	-90	0	01-Jan-90	Dominion	A035008
90CRRB060	10	RAB	628189.65	7188153.27	513	-90	0	24-Sep-90	Dominion	A035008	90CRRB185	2	RAB	628639.65	7186553.26	517	-90	0	27-Sep-90	Dominion	A035008	90CRRB310	4	RAB	628764.65	7188953.27	506	-90	0	01-Jan-90	Dominion	A035008
90CRRB061	10	RAB	628214.65	7188153.27	514	-90	0	24-Sep-90	Dominion	A035008	90CRRB186	5	RAB	628964.66	7186353.26	515	-90	0	27-Sep-90	Dominion	A035008	91CR010	18	RAB	628039.65	7189553.27	507	-90	0	01-Jan-91	Dominion	A035008
90CRRB062	5	RAB	628639.65	7187453.26	519	-90	0	25-Sep-90	Dominion	A035008	90CRRB187	5	RAB	628989.66	7186353.26	515	-90	0	27-Sep-90	Dominion	A035008	91CR011	20	RAB	628139.65	7189553.27	507	-90	0	01-Jan-91	Dominion	A035008
90CRRB063	2	RAB	628614.65	7187453.26	519	-90	0	25-Sep-90	Dominion	A035008	90CRRB188	4	RAB	629014.66	7186353.26	515	-90	0	27-Sep-90	Dominion	A035008	91CR012	26	RAB	628239.65	7189553.27	506	-90	0	01-Jan-91	Dominion	A035008
90CRRB064	2	RAB	628589.65	7187453.26	518	-90	0	25-Sep-90	Dominion	A035008	90CRRB189	5	RAB	629039.66	7186353.26	515	-90	0	27-Sep-90	Dominion	A035008	91CR013	32	RAB	628339.65	7189553.27	506	-90	0	01-Jan-91	Dominion	A035008
90CRRB065	2	RAB	628564.65	7187453.26	518	-90	0	25-Sep-90	Dominion	A035008	90CRRB193	5	RAB	628239.65	7187953.27	513	-90	0	27-Sep-90	Dominion	A035008	91CR014	44	RAB	628459.65	7189553.27	504	-90	0	01-Jan-91	Dominion	A035008



Hole	Depth	HoleType	East	North	DEM	RL	Dip	Azm	Completed	Company	DataSource	Hole	Depth	HoleType	East	North	DEM	RL	Dip	Azm	Completed	Company	DataSource
91CR015	18	RAB	628539.65	7189553.27		506	-90	0	01-Jan-91	Dominion	A035008	FRB1047	62	RAB	628601.65	7188153.27		511	-60	90	19-Mar-96	Perilya	A050287
91CR016	16	RAB	628639.65	7189553.27		507	-90	0	01-Jan-91	Dominion	A035008	FRB1048	71	RAB	628627.65	7188153.27		510	-60	90	19-Mar-96	Perilya	A050287
91CR017	26	RAB	628739.65	7189553.27		509	-90	0	01-Jan-91	Dominion	A035008	FRB1049	50	RAB	628656.65	7188153.27		510	-60	90	19-Mar-96	Perilya	A050287
91CR018	10	RAB	628839.65	7189553.27		509	-90	0	01-Jan-91	Dominion	A035008	FRB1050	62	RAB	628677.15	7188153.27		510	-60	90	20-Mar-96	Perilya	A050287
91CR019	10	RAB	628939.65	7189553.27		509	-90	0	01-Jan-91	Dominion	A035008	FRB1051	52	RAB	628711.15	7188153.27		510	-60	90	20-Mar-96	Perilya	A050287
91CR020	6	RAB	629039.65	7189553.27		510	-90	0	01-Jan-91	Dominion	A035008	FRB1052	43	RAB	628738.65	7188153.27		510	-60	90	20-Mar-96	Perilya	A050287
91CR028	10	RAB	627939.65	7189553.27		507	-90	0	01-Jan-91	Dominion	A035008	FRB1053	62	RAB	628762.15	7188153.27		510	-60	90	20-Mar-96	Perilya	A050287
91CR029	8	RAB	628814.66	7189553.26		507	-90	0	01-Jan-91	Dominion	A035008	FRB1054	48	RAB	628792.15	7188153.27		510	-60	90	20-Mar-96	Perilya	A050287
91CR030	10	RAB	627739.65	7189553.27		509	-90	0	01-Jan-91	Dominion	A035008	FRB1055	65	RAB	628818.65	7188153.27		509	-60	90	20-Mar-96	Perilya	A050287
91CR031	10	RAB	627639.65	7189553.27		509	-90	0	01-Jan-91	Dominion	A035008	FRB1056	37	RAB	628851.15	7188153.27		509	-60	90	20-Mar-96	Perilya	A050287
92CARB008	50	RAB	628614.65	7185953.26		525	-60	90	17-Oct-92	Dominion	A030801	FRB1057	44	RAB	628876.65	7188153.27		509	-60	90	20-Mar-96	Perilya	A050287
92CARB009	50	RAB	628664.66	7185953.26		524	-60	90	18-Oct-92	Dominion	A030801	FRB1058	37	RAB	628899.65	7188153.27		508	-60	90	20-Mar-96	Perilya	A050287
92CARB010	50	RAB	628714.65	7185953.26		523	-60	90	18-Oct-92	Dominion	A030801	FRB1059	77	RAB	628959.65	7188153.27		508	-60	90	21-Mar-96	Perilya	A050287
92CARB011	50	RAB	628764.66	7185953.26		521	-60	90	19-Oct-92	Dominion	A030801	FRB1060	83	RAB	628991.65	7188153.27		509	-60	90	21-Mar-96	Perilya	A050287
92CARB012	50	RAB	628814.66	7185953.26		520	-60	90	20-Oct-92	Dominion	A030801	FRB1061	77	RAB	629030.65	7188153.27		510	-60	90	21-Mar-96	Perilya	A050287
92CARB013	50	RAB	628864.66	7185953.26		519	-60	90	20-Oct-92	Dominion	A030801	FRB1062	60	RAB	629148.66	7188153.27		510	-60	90	21-Mar-96	Perilya	A050287
92CARB014	50	RAB	627639.65	7186753.26		534	-60	90	20-Oct-92	Dominion	A030801	FRB1063	62	RAB	629210.66	7188153.27		511	-60	90	21-Mar-96	Perilya	A050287
92CARB015	50	RAB	627689.65	7186753.26		536	-60	90	20-Oct-92	Dominion	A030801	FRB1064	71	RAB	629274.66	7188153.27		511	-60	90	21-Mar-96	Perilya	A050287
92CARB016	50	RAB	627739.65	7186753.26		536	-60	90	20-Oct-92	Dominion	A030801	FRB1065	69	RAB	629339.66	7188153.27		511	-60	90	22-Mar-96	Perilya	A050287
92CARB017	50	RAB	627789.65	7186753.26		535	-60	90	20-Oct-92	Dominion	A030801	FRB1066	77	RAB	629408.66	7188153.27		511	-60	90	22-Mar-96	Perilya	A050287
92CARB018	50	RAB	627839.65	7186753.26		535	-60	90	21-Oct-92	Dominion	A030801	FRB1067	75	RAB	628041.65	7187353.26		519	-60	90	22-Mar-96	Perilya	A050287
92CARB019	50	RAB	627889.65	7186753.26		534	-60	90	21-Oct-92	Dominion	A030801	FRB1068	52	RAB	628078.65	7187358.26		519	-60	90	22-Mar-96	Perilya	A050287
92CARB020	50	RAB	627939.65	7186753.26		532	-60	90	21-Oct-92	Dominion	A030801	FRB1069	65	RAB	628101.65	7187353.26		519	-60	90	23-Mar-96	Perilya	A050287
92CARB021	50	RAB	627989.65	7186753.26		530	-60	90	21-Oct-92	Dominion	A030801	FRB1070	72	RAB	628132.65	7187355.26		519	-60	90	23-Mar-96	Perilya	A050287
92CARB022	50	RAB	628039.65	7186753.26		529	-60	90	21-Oct-92	Dominion	A030801	FRB1071	74	RAB	628169.65	7187353.26		520	-60	90	23-Mar-96	Perilya	A050287
92CARB023	50	RAB	628089.65	7186753.26		527	-60	90	21-Oct-92	Dominion	A030801	FRB1072	72	RAB	628199.65	7187353.26		520	-60	90	23-Mar-96	Perilya	A050287
92CARB024	50	RAB	62814.65	7187553.26		517	-60	90	21-Oct-92	Dominion	A030801	FRB1073	70	RAB	628239.65	7187353.26		520	-60	90	23-Mar-96	Perilya	A050287
92CARB025	56	RAB	628489.65	7189553.27		507	-60	90	21-Oct-92	Dominion	A030801	FRB1074	60	RAB	628274.65	7187353.26		520	-60	90	23-Mar-96	Perilya	A050287
92CARB026	59	RAB	628539.65	7189553.27		507	-60	90	22-Oct-92	Dominion	A030801	FRB1075	79	RAB	628304.65	7187353.26		519	-60	90	24-Mar-96	Perilya	A050287
92CARB027	60	RAB	628589.65	7189553.27		506	-60	90	22-Oct-92	Dominion	A030801	FRB1076	53	RAB	628346.65	7187353.26		520	-60	90	24-Mar-96	Perilya	A050287
92CARB028	60	RAB	628639.65	7189553.27		506	-60	90	22-Oct-92	Dominion	A030801	FRB1077	74	RAB	628380.65	7187353.26		520	-60	90	24-Mar-96	Perilya	A050287
92CARB029	40	RAB	628689.65	7189553.27		506	-60	90	22-Oct-92	Dominion	A030801	FRB1078	75	RAB	628417.65	7187353.26		519	-60	90	24-Mar-96	Perilya	A050287
92CARB030	58	RAB	628719.65	7189553.27		506	-60	90	22-Oct-92	Dominion	A030801	FRB1079	39	RAB	628459.65	7187353.26		519	-60	90	25-Mar-96	Perilya	A050287
92CARB031	58	RAB	628789.65	7189553.27		507	-60	90	23-Oct-92	Dominion	A030801	FRB1080	75	RAB	628489.65	7187353.26		519	-60	90	25-Mar-96	Perilya	A050287
92CARB032	59	RAB	628299.65	7189553.28		503	-60	90	23-Oct-92	Dominion	A030801	FRB1081	62	RAB	628505.65	7187353.26		519	-60	90	25-Mar-96	Perilya	A050287
92CARB033	60	RAB	628339.65	7189553.28		503	-60	90	23-Oct-92	Dominion	A030801	FRB1082	83	RAB	628535.65	7187353.26		519	-60	90	25-Mar-96	Perilya	A050287
92CARB034	60	RAB	628889.65	7189553.28		506	-60	90	24-Oct-92	Dominion	A030801	FRB1083	53	RAB	628574.65	7187353.26		519	-60	90	25-Mar-96	Perilya	A050287
92CARB035	60	RAB	628839.65	7189553.28		506	-60	90	24-Oct-92	Dominion	A030801	FRB1084	45	RAB	628600.65	7187353.26		519	-60	90	25-Mar-96	Perilya	A050287
92CARB036	59	RAB	628789.65	7189553.28		506	-60	90	24-Oct-92	Dominion	A030801	FRB1085	62	RAB	628622.65	7187353.26		518	-60	90	25-Mar-96	Perilya	A050287
92CARB037	50	RAB	628739.65	7189553.28		506	-60	90	24-Oct-92	Dominion	A030801	FRB1086	63	RAB	628659.65	7187353.26		524	-60	90	25-Mar-96	Perilya	A050287
92CARB038	62	RAB	628689.65	7189553.28		505	-60	90	24-Oct-92	Dominion	A030801	FRB1087	103	RAB	627571.65	7187753.26		523	-60	90	25-Mar-96	Perilya	A050287
92CARB039	68	RAB	628639.65	7189553.28		505	-60	90	25-Oct-92	Dominion	A030801	FRB1088	41	RAB	627628.65	7187753.26		523	-60	90	27-Mar-96	Perilya	A050287
92CARB040	68	RAB	628589.65	7189553.28		505	-60	90	25-Oct-92	Dominion	A030801	FRB1089	75	RAB	627641.65	7187753.26		523	-60	90	27-Mar-96	Perilya	A050287
92CARB041	68	RAB	628539.65	7189553.28		504	-60	90	25-Oct-92	Dominion	A030801	FRB1090	61	RAB	627684.65	7187753.26		522	-60	90	27-Mar-96	Perilya	A050287
92CARB042	68	RAB	628489.65	7189553.28		504	-60	90	25-Oct-92	Dominion	A030801	FRB1091	99	RAB	627599.65	7186553.26		533	-60	90	27-Mar-96	Perilya	A050287
92CARB043	68	RAB	628439.65	7189553.28		504	-60	90	25-Oct-92	Dominion	A030801	FRB1092	77	RAB	627655.65	7186553.26		534	-60	90	28-Mar-96	Perilya	A050287
92CARB044	68	RAB	628389.65	7189553.28		504	-60	90	25-Oct-92	Dominion	A030801	FRB1093	107	RAB	627689.65	7186553.26		535	-60	90	28-Mar-96	Perilya	A050287
BLRC001	54	RC	627518.00	7186012.00		547	-60	80	01-Jun-12	RNI	A98289	FRB1108	47	RAB	628797.65	7186553.26		517	-60	90	29-Mar-96	Perilya	A050287
BLRC002	39	RC	627580.00	7186015.00		546	-60	90	01-Jun-12	RNI	A98289	FRB1095	53	RAB	627789.65	7186553.26		535	-60	90	28-Mar-96	Perilya	A050287
BLRC003	48	RC	627438.00	7186019.00		546	-60	95	01-Jun-12	RNI	A98289	FRB1096	67	RAB	627814.65	7186553.26		534	-60	90	28-Mar-96	Perilya	A050287
BLRC004	48	RC	627405.00	7186010.00		547	-60	72	01-Jun-12	RNI	A98289	FRB1097	34	RAB	627847.65	7186553.26		534	-60	90	28-Mar-96	Perilya	A050287
BLRC005	48	RC	627361.00	7186010.00		547	-60	95	01-Jun-12	RNI	A98289	FRB1098	44	RAB	627872.65	7186553.26		534	-60	90	28-Mar-96	Perilya	A050287
BLRC006	48	RC	627317.00	7186004.00		548	-60	90	02-Jun-12	RNI	A98289	FRB1099	28	RAB	627899.65	7186553.26		533	-60	90	28-Mar-96	Perilya	A050287
BLRC007	48	RC	627277.00	7186009.00		548	-60	105	02-Jun-12	RNI	A98289	FRB1100	30	RAB	627919.65	7186553.26		533	-60	90	28-Mar-96	Perilya	A050287
BLRC008	48	RC	627236.00	7186016.00		547	-60	87	03-Jun-12	RNI	A98289	FRB1101	52	RAB	627949.65	7186553.26		532	-60	90	28-Mar-96</		



Hole	From	To	Au (G/t)	Hole	From	To	Au (G/t)	Hole	From	To	Au (G/t)	Hole	From	To	Au (G/t)	Hole	From	To	Au (G/t)	Hole	From	To	Au (G/t)	Hole	From	To	Au (G/t)	Hole	From	To	Au (G/t)
1051	0	2	+0.05	90CRB009	0	3	+0.05	90CRB109	0	2	+0.05	90CRB209	0	11	+0.05	90CRB309	36	45	0.34	90CRB409	0	48	0.05	90CRB509	38	45	0.05	90CRB609	0	3	+0.05
1052	0	2	+0.05	90CRB010	0	4	+0.05	90CRB110	0	2	+0.05	90CRB210	0	14	+0.05	90CRB310	39	42	0.16	90CRB410	0	48	0.05	90CRB510	38	45	0.05	90CRB610	0	3	+0.05
1053	0	2	+0.05	90CRB011	0	3	+0.05	90CRB111	0	2	+0.05	90CRB211	0	10	+0.05	90CRB311	42	45	0.05	90CRB411	0	21	0.84	90CRB511	38	45	0.11	90CRB611	0	56	+0.05
1054	0	2	+0.05	90CRB012	0	2	+0.05	90CRB112	0	2	+0.05	90CRB212	0	10	+0.05	90CRB312	41	44	0.175	90CRB412	0	21	0.84	90CRB512	38	45	0.09	90CRB612	5	10	0.06
1055	0	2	+0.05	90CRB013	0	2	+0.05	90CRB113	0	2	+0.05	90CRB213	0	8	+0.05	90CRB313	51	54	0.05	90CRB413	0	21	0.84	90CRB513	38	45	0.09	90CRB613	12	15	0.06
1056	0	2	+0.05	90CRB014	0	2	+0.05	90CRB114	0	2	+0.05	90CRB214	0	8	+0.05	90CRB314	54	57	0.05	90CRB414	0	21	0.84	90CRB514	38	45	+0.05	90CRB614	6	10	0.06
1057	0	2	+0.05	90CRB015	0	4	+0.05	90CRB115	0	2	+0.05	90CRB215	0	11	+0.05	90CRB315	9	12	0.13	90CRB415	0	21	0.84	90CRB515	38	45	+0.05	90CRB615	0	58	+0.05
1058	0	4	+0.05	90CRB016	0	4	+0.05	90CRB116	0	2	+0.05	90CRB216	0	11	+0.05	90CRB316	12	15	0.39	90CRB416	0	34	0.16	90CRB516	38	45	+0.05	90CRB616	0	58	+0.05
1059	0	4	+0.05	90CRB017	0	8	+0.05	90CRB117	0	2	+0.05	90CRB217	0	11	+0.05	90CRB317	15	18	0.09	90CRB417	0	55	0.14	90CRB517	38	45	+0.05	90CRB617	0	24	+0.05
1060	0	2	+0.05	90CRB018	0	8	+0.05	90CRB118	0	2	+0.05	90CRB218	0	11	+0.05	90CRB318	21	24	0.03	90CRB418	0	55	0.14	90CRB518	38	45	+0.05	90CRB618	0	58	+0.05
1061	0	2	+0.05	90CRB019	0	8	+0.05	90CRB119	0	2	+0.05	90CRB219	0	11	+0.05	90CRB319	21	24	0.43	90CRB419	0	55	0.14	90CRB519	38	45	+0.05	90CRB619	0	58	+0.05
1062	0	2	+0.05	90CRB020	0	5	+0.05	90CRB120	0	2	+0.05	90CRB220	0	8	+0.05	90CRB320	21	24	0.11	90CRB420	0	55	0.14	90CRB520	38	45	+0.05	90CRB620	0	58	+0.05
1063	0	2	+0.05	90CRB021	0	8	+0.05	90CRB121	0	2	+0.05	90CRB221	0	10	+0.05	90CRB321	21	24	0.11	90CRB421	0	55	0.14	90CRB521	38	45	+0.05	90CRB621	0	58	+0.05
1064	0	2	+0.05	90CRB022	0	8	+0.05	90CRB122	0	2	+0.05	90CRB222	0	8	+0.05	90CRB322	21	24	0.11	90CRB422	0	55	0.14	90CRB522	38	45	+0.05	90CRB622	0	58	+0.05
1065	0	2	+0.05	90CRB023	0	8	+0.05	90CRB123	0	2	+0.05	90CRB223	0	8	+0.05	90CRB323	21	24	0.11	90CRB423	0	55	0.14	90CRB523	38	45	+0.05	90CRB623	0	58	+0.05
1066	0	2	+0.05	90CRB024	0	11	+0.05	90CRB124	0	10	+0.05	90CRB224	0	10	+0.05	90CRB324	36	39	0.14	90CRB424	0	55	0.14	90CRB524	38	45	+0.05	90CRB624	0	58	+0.05
1067	0	2	+0.05	90CRB025	0	11	+0.05	90CRB125	0	11	+0.05	90CRB225	0	11	+0.05	90CRB325	39	42	0.14	90CRB425	0	55	0.14	90CRB525	38	45	+0.05	90CRB625	0	58	+0.05
1068	0	2	+0.05	90CRB026	0	8	+0.05	90CRB126	0	11	+0.05	90CRB226	0	10	+0.05	90CRB326	39	42	0.14	90CRB426	0	55	0.14	90CRB526	38	45	+0.05	90CRB626	0	58	+0.05
1069	0	2	+0.05	90CRB027	0	8	+0.05	90CRB127	0	11	+0.05	90CRB227	0	11	+0.05	90CRB327	41	44	0.175	90CRB427	0	21	0.84	90CRB527	38	45	+0.05	90CRB627	0	58	+0.05
1070	0	2	+0.05	90CRB028	0	8	+0.05	90CRB128	0	11	+0.05	90CRB228	0	10	+0.05	90CRB328	41	44	0.175	90CRB428	0	21	0.84	90CRB528	38	45	+0.05	90CRB628	0	58	+0.05
1071	0	2	+0.05	90CRB029	0	6	+0.05	90CRB129	0	11	+0.05	90CRB229	0	10	+0.05	90CRB329	51	54	0.06	90CRB429	0	21	0.84	90CRB529	38	45	+0.05	90CRB629	0	58	+0.05
1072	0	2	+0.05	90CRB030	0	4	+0.05	90CRB130	0	10	+0.05	90CRB230	0	11	+0.05	90CRB330	36	39	0.17	90CRB430	0	21	0.84	90CRB530	38	45	+0.05	90CRB630	0	58	+0.05
1073	0	2	+0.05	90CRB031	0	4	+0.05	90CRB131	0	8	+0.05	90CRB231	0	10	+0.05	90CRB331	39	42	0.09	90CRB431	0	21	0.84	90CRB531	38	45	+0.05	90CRB631	0	58	+0.05
1074	0	2	+0.05	90CRB032	0	8	+0.05	90CRB132	0	8	+0.05	90CRB232	0	11	+0.05	90CRB332	41	44	0.175	90CRB432	0	21	0.84	90CRB532	38	45	+0.05	90CRB632	0	58	+0.05
1075	0	2	+0.05	90CRB033	0	8	+0.05	90CRB133	0	11	+0.05	90CRB233	0	26	+0.05	90CRB333	42	45	0.05	90CRB433	0	21	0.84	90CRB533	38	45	+0.05	90CRB633	0	58	+0.05
1076	0	2	+0.05	90CRB034	0	8	+0.05	90CRB134	0	16	+0.05	90CRB234	0	11	+0.05	90CRB334	45	48	0.52	90CRB434	0	21	0.84	90CRB534	38	45	+0.05	90CRB634	0	58	+0.05
1077	0	2	+0.05	90CRB035	0	8	+0.05	90CRB135	0	14	+0.05	90CRB235	0	11	+0.05	90CRB335	48	51	0.12	90CRB435	0	21	0.84	90CRB535	38	45	+0.05	90CRB635	0	58	+0.05
1078	0	2	+0.05	90CRB036	0	8	+0.05	90CRB136	0	11	+0.05	90CRB236	0	11	+0.05	90CRB336	48	51	0.12	90CRB436	0	21	0.84	90CRB536	38	45	+0.05	90CRB636	0	58	+0.05
1079	0	2	+0.05	90CRB037	0	8	+0.05	90CRB137	0	11	+0.05	90CRB237	0	11	+0.05	90CRB337	48	51	0.12	90CRB437	0	21	0.84	90CRB537	38	45	+0.05	90CRB637	0	58	+0.05
1080	0	2	+0.05	90CRB038	0	8	+0.05	90CRB138	0	8	+0.05	90CRB238	0	16	+0.05	90CRB338	48	51	0.12	90CRB438	0	21	0.84	90CRB538	38	45	+0.05	90CRB638	0	58	+0.05
1081	0	2	+0.05	90CRB039	0	10	+0.05	90CRB139	0	5	+0.05	90CRB239	0	11	+0.05	90CRB339	48	51	0.12	90CRB439	0	21	0.84	90CRB539	38	45	+0.05	90CRB639	0	58	+0.05
1082	0	2	+0.05	90CRB040	0	10	+0.05	90CRB140	0	5	+0.05	90CRB240	0	11	+0.05	90CRB340	48	51	0.12	90CRB440	0	21	0.84	90CRB540	38	45	+0.05	90CRB640	0	58	+0.05
1083	0	2	+0.05	90CRB041	0	10	+0.05	90CRB141	0	5	+0.05	90CRB241	0	11	+0.05	90CRB341	48	51	0.12	90CRB441	0	21	0.84	90CRB541	38	45	+0.05	90CRB641	0	58	+0.05
1084	0	2	+0.05	90CRB042	0	11	+0.05	90CRB142	0	8	+0.05	90CRB242	0	12	+0.05	90CRB342	48	51	0.12	90CRB442	0	21	0.84	90CRB542	38	45	+0.05	90CRB642	0	58	+0.05
1085	0	2	+0.05	90CRB043	0	11	+0.05	90CRB143	0	8	+0.05	90CRB243	0	11	+0.05	90CRB343	48	51	0.12	90CRB443	0	21	0.84	90CRB543	38	45	+0.05	90CRB643	0	58	+0.05
1086	0	2	+0.05	90CRB044	0	11	+0.05	90CRB144	0	11	+0.05	90CRB244	0	14	+0.05	90CRB344	48	51	0.12	90CRB444	0	21	0.84	90CRB544	38	45	+0.05	90CRB644	0	58	+0.05
1087	0	2	+0.05	90CRB045	0	11	+0.05	90CRB145	0	8	+0.05	90CRB245	0	8	+0.05	90CRB345	48	51	0.12	90CRB445	0	21	0.84	90CRB545	38	45	+0.05	90CRB645	0	58	+0.05
1088	0	2	+0.05	90CRB046	0	11	+0.05	90CRB146	0	8	+0.05	90CRB246	0	8	+0.05	90CRB346	48	51	0.12	90CRB446	0	21	0.84	90CRB546	38	45	+0.05	90CRB646	0	58	+0.05
1089	0	2	+0.05	90CRB047	0	11	+0.05	90CRB147	0	8	+0.05	90CRB247	0	8	+0.05	90CRB347	48	51	0.12	90CRB447	0	21	0.84	90CRB547	38	45	+0.05	90CRB647	0	58	+0.05
1090	0	2	+0.05	90CRB048	0	10	+0.05	90CRB148	0	4	+0.05	90CRB248	0	10	+0.05	90CRB348	48	51	0.12	90CRB448	0	21	0.84	90CRB548	38	45	+0.05	90CRB648	0	58	+0.05
1091	0	2	+0.05	90CRB049	0	10	+0.05	90CRB149	0	5	+0.05	90CRB249	0	11	+0.05	90CRB349	48	51	0.12	90CRB449	0	21	0.84	90CRB549	38	45	+0.05	90CRB649	0	58	+0.05
1092	0	2	+0.05	90CRB050	0	10	+0.05	90CRB150	0	5	+0.05	90CRB250	0	11	+0.05	90CRB350	48	51	0.12	90CRB450	0	21	0.84	90CRB550	38	45	+0.05	90CRB650	0	58	+0.05
1093	0	2	+0.05	90CRB051	0	11	+0.05	90CRB151	0	4	+0.05	90CRB251	0	11	+0.05	90CRB351	48	51	0.12	90CRB451	0	21	0.84	90CRB551	38	45	+0.05	90CRB651	0	58	+0.05
90CAR01	0	40	+0.05	90CRB043	0	11	+0.05	90CRB143	0	8	+0.05	90CRB243	0	11	+0.05	90CRB343	48	51	0.12	90CRB443	0	21	0.84	90CRB543	38	45	+0.05	90CRB643	0	58	+0.05
90CAR02	0	36	+0.05	90CRB044	0	11	+0.05	90CRB144	0	11	+0.05	90CRB244	0	14	+0.05	90CRB344	48	51	0.12	90CRB											



JORC 2012 Edition - Table 1

Section 1 Sampling Techniques and Data

Criteria	JORC Code Explanation	Commentary
Sampling techniques	<ul style="list-style-type: none"> Nature and quality of sampling (e.g. cut channels, random chips, or specific specialised industry standard measurement tools appropriate to the minerals under investigation, such as down hole gamma sondes, or handheld XRF instruments, etc). These examples should not be taken as limiting the broad meaning of sampling. Include reference to measures taken to ensure sample representatively and the appropriate calibration of any measurement tools or systems used. Aspects of the determination of mineralisation that are Material to the Public Report. In cases where 'industry standard' work has been done this would be relatively simple (e.g. 'reverse circulation drilling was used to obtain 1 m samples from which 3 kg was pulverised to produce a 30 g charge for fire assay'). In other cases, more explanation may be required, such as where there is coarse gold that has inherent sampling problems. Unusual commodities or mineralisation types (e.g., submarine nodules) may warrant disclosure of detailed information. 	<ul style="list-style-type: none"> This announcement contains information and data from historical exploration programs that were conducted according to the practice at the time. The main source, which details all of the other sources for the data is https://www.dmp.wa.gov.au/WAMEX-Minerals-Exploration-1476.aspx: Report A119961. All data has been compiled from data given to Nelson by Westgold in 2019. Samples from the RAB and Reverse-Circulation (RC) drilling were drilled at 1m intervals and placed on the ground by the drillers, in the order that the samples were drilled. The material was then sampled using grab sampling methods with are not considered to be representative enough for resource estimation work but are sufficient for the purpose of identifying mineralised systems. The Company is satisfied that the sampling from the historical work is fit for purpose: identifying the presence of a mineralised system.
Drilling techniques	<ul style="list-style-type: none"> Drill type (e.g. core, reverse circulation, open-hole hammer, rotary air blast, auger, Bangka, sonic, etc) and details (e.g. core diameter, triple or standard tube, depth of diamond tails, face-sampling bit or other type, whether core is oriented and if so, by what method, etc). 	<ul style="list-style-type: none"> RAB drilling was completed before 1996 using a standard blade bit for the time. Size of bit is not recorded. RC drilling completed in 2012 and used a 140mm face-sampling hammer. Both methods are suitable for work on the project and fit for the purpose of identifying the presence of a mineralised system.
Drill sample recovery	<ul style="list-style-type: none"> Method of recording and assessing core and chip sample recoveries and results assessed. Measures taken to maximise sample recovery and ensure representative nature of the samples. Whether a relationship exists between sample recovery and grade and whether sample bias may have occurred due to preferential loss/gain of fine/coarse material. 	<ul style="list-style-type: none"> Sample recovery was not recorded for this historical drilling in a form that is able to be evaluated. No concerns about recovery were reported in historical reports. Some of the RAB holes are quite deep and may have significant contamination. However, this does not appear to have affected results.
Logging	<ul style="list-style-type: none"> Whether core and chip samples have been geologically and geotechnically logged to a level of detail to support appropriate Mineral Resource estimation, mining studies and metallurgical studies. Whether logging is qualitative or quantitative in nature. Core (or costean, channel, etc) photography. The total length and percentage of the relevant intersections logged. 	<ul style="list-style-type: none"> All samples were pulverised drill spoil. Drill holes were visually logged by historical company geologists. This data has not yet been translated to digital form.



Criteria	JORC Code Explanation	Commentary
Sub-sampling techniques and sample preparation	<ul style="list-style-type: none"> • <i>If core, whether cut or sawn and whether quarter, half or all core taken.</i> • <i>If non-core, whether riffled, tube sampled, rotary split, etc and whether sampled wet or dry.</i> • <i>For all sample types, the nature, quality and appropriateness of the sample preparation technique.</i> • <i>Quality control procedures adopted for all sub-sampling stages to maximise representivity of samples.</i> • <i>Measures taken to ensure that the sampling is representative of the in situ material collected, including for instance results for field duplicate/second-half sampling.</i> • <i>Whether sample sizes are appropriate to the grain size of the material being sampled.</i> 	<ul style="list-style-type: none"> • Drill samples were collected for the entire drill hole at 1m samples and then sub-sampled over various composite intervals using grab sampling methods. • The representativeness of the historical work is not specifically recorded. • Samples were submitted to various laboratories in Perth and Kalgoorlie for analysis. • The approach used by the historical explorers is similar to contemporary methods. • Re-sampling and analytical repeats appear to suggest the sampling methods were sound.
Quality of assay data and laboratory tests	<ul style="list-style-type: none"> • <i>The nature, quality and appropriateness of the assaying and laboratory procedures used and whether the technique is considered partial or total.</i> • <i>For geophysical tools, spectrometers, handheld XRF instruments, etc, the parameters used in determining the analysis including instrument make and model, reading times, calibrations factors applied and their derivation, etc.</i> • <i>Nature of quality control procedures adopted (e.g. standards, blanks, duplicates, external laboratory checks) and whether acceptable levels of accuracy (i.e. lack of bias) and precision have been established.</i> 	<ul style="list-style-type: none"> • There is no specific documentation about sample security or sample quality. • The documented laboratory sample preparation methods indicate that the historical methods are similar to what is currently considered to be best practise. • Samples were all dried and pulverised before digest. • A variety of digests were used which are comparable to methods used currently and all are considered to be acceptable at this stage. • No standards, blanks, duplicates or laboratory standards are available for review. • Based on commentary in the submitted reports, the Company is confident that the analytical results broadly represent the gold content in the drilled samples. • None of the work is suitable for resource estimation but the data fit for the purpose of identifying the presence of a mineralised system.
Verification of sampling and assaying	<ul style="list-style-type: none"> • <i>The verification of significant intersections by either independent or alternative company personnel.</i> • <i>The use of twinned holes.</i> • <i>Documentation of primary data, data entry procedures, data verification, data storage (physical and electronic) protocols.</i> • <i>Discuss any adjustment to assay data.</i> 	<ul style="list-style-type: none"> • Assay results have been accepted from the historical data at face value. Limited checking of the digital data suggests the data is correct. • Electronic data is stored on Nelson's secure server. There are no assay certificates. • Assay that are returned below the detection limit for the relevant analytical method are stored in the database as half the detection limit (commonly 0.0005 g/t) to remove non-numeric characters from the data. Otherwise, no adjustments have been made to the data.
Location of data points	<ul style="list-style-type: none"> • <i>Accuracy and quality of surveys used to locate drill holes (collar and down-hole surveys), trenches, mine workings and other locations used in Mineral Resource estimation.</i> • <i>Specification of the grid system used.</i> • <i>Quality and adequacy of topographic control.</i> 	<ul style="list-style-type: none"> • Drill hole locations in the database are close to disturbance on aerial photographs that is consistent with historical drilling. • Otherwise, no holes have yet been re-surveyed on the project. • All locations in this report use UTM projection of the MGA 1994, zone 50, co-ordinate system. • The reported RL's are taken from SRTM-derived DEM created by



Criteria	JORC Code Explanation	Commentary
Data spacing and distribution	<ul style="list-style-type: none"> Data spacing for reporting of Exploration Results. Whether the data spacing and distribution is sufficient to establish the degree of geological and grade continuity appropriate for the Mineral Resource and Ore Reserve estimation procedure(s) and classifications applied. Whether sample compositing has been applied. 	<p>Nelson Resources.</p> <ul style="list-style-type: none"> Historically drill holes have been positioned to test the interpreted location of the potential mineralisation at variable spacings between 25m and 100m across the interpreted strike of the mineralisation. Lines of drilling are at 200m to 400m spacing. At this stage it is not possible to determine whether the data spacing and distribution is sufficient to establish geological and grade continuity for any purpose. Sample compositing has been used as described above. The data spacing and distribution appears to be fit for the purpose of identifying the presence of a mineralised system.
Orientation of data in relation to geological structure	<ul style="list-style-type: none"> Whether the orientation of sampling achieves unbiased sampling of possible structures and the extent to which this is known, considering the deposit type. If the relationship between the drilling orientation and the orientation of key mineralised structures is considered to have introduced a sampling bias, this should be assessed and reported if material. 	<ul style="list-style-type: none"> Drill holes are drilled across the interpreted strike of the mineralisation There is insufficient data to determine relationships between drilling orientation and the orientation of key mineralised structures.
Sample security	<ul style="list-style-type: none"> The measures taken to ensure sample security. 	<ul style="list-style-type: none"> The intercepts reported come from historical work where sample security is undocumented.
Audits or reviews	<ul style="list-style-type: none"> The results of any audits or reviews of sampling techniques and data reviews. 	<ul style="list-style-type: none"> The data has been reviewed by the Company's geologists, and a number of steps taken to check for unusual data distributions.

Section 2 Reporting of Exploration Results

(Criteria listed in the preceding section also apply to this section.)

Criteria	JORC Code Explanation	Commentary
Mineral tenement and land tenure status	<ul style="list-style-type: none"> Type, reference name/number, location and ownership including agreements or material issues with third parties such as joint ventures, partnerships, overriding royalties, native title interests, historical sites, wilderness or national park and environmental settings. The security of the tenure held at the time of reporting along with any known impediments to obtaining a licence to operate in the area. 	<ul style="list-style-type: none"> The Fortnum Project is located approximately 130km north north-east of Meekatharra and adjacent to Westgold's Fortnum Gold Mine. The project includes the following granted Exploration Licences: E52/3695 and E52/4133. The tenements are held by 79 Exploration Pty Ltd, a wholly-owned subsidiary of Nelson Resources. All tenements lie within the JidiJidi Native Title Claim All the tenements are in good standing with no known impediments.
Exploration done by other parties	<ul style="list-style-type: none"> Acknowledgment and appraisal of exploration by other parties. 	<ul style="list-style-type: none"> All data has been compiled from https://www.dmp.wa.gov.au/WAMEX-Minerals-Exploration-1476.aspx: Report A119961. In summary, initial exploration of the area was carried out for gold mineralisation by Dominion Mining (1988 – 1993) and Perilya Mines (1995 – 2003) who collected approximately 2700 soil samples. This work includes data that is both inside of and outside of the current tenements.



Criteria	JORC Code Explanation	Commentary
		<ul style="list-style-type: none">• The surface sampling work resulted in identification of a surficial gold-in-soil anomaly that outlines the major prospects at Nelson's Fortnum Project.• This surface sampling was followed up by RAB drilling (517 holes for 12,237m) by Dominion Mining (1988 – 1993) and Perilya Mines (1995 – 2003). In 2012, Grosvenor Gold completed RC drilling (33 holes for 1565m).• This work identified the assays from the intercepts reported herein were derived.• Several other companies have held the ground but completed no significant work.• No systematic exploration work, over the whole tenement, has been completed since 1996.
Geology	<ul style="list-style-type: none">• <i>Deposit type, geological setting and style of mineralisation.</i>	<ul style="list-style-type: none">• The project sits across the boundaries of the Yarlalweelor Gneiss, Labouchere Formation and Despair Granite.• The Yarlalweelor Gneiss Complex, is an Archean granite and part of the Narryer Complex. It is in structural contact with the Labouchere Formation.• In the centre of the project is the strongly deformed, Proterozoic, Labouchere Formation; a unit of quartz-feldspar arenites and siltstones, mostly represented by sericite to muscovite schist. These rocks are the host to several gold deposits in the region, including Nathans.• On the eastern side of the project is the Despair Granite which is strongly deformed throughout and may intrude the Labouchere Formation.• The Despair Granite appears to be the host for the Wilthorpe gold deposit which sits around 9km to the south of the project.• Gold mineralisation is likely to be similar to Nathans and Wilthorpe with a mixture of biotite-pyrite altered shear zones and quartz veins within the host rocks.



Criteria	JORC Code Explanation	Commentary
Drill hole Information	<ul style="list-style-type: none"> A summary of all information material to the understanding of the exploration results including a tabulation of the following information for all Material drill holes: <ul style="list-style-type: none"> easting and northing of the drill hole collar elevation or RL (Reduced Level – elevation above sea level in metres) of the drill hole collar dip and azimuth of the hole down hole length and interception depth hole length. If the exclusion of this information is justified on the basis that the information is not Material and this exclusion does not detract from the understanding of the report, the Competent Person should clearly explain why this is the case. 	<ul style="list-style-type: none"> Summary maps showing the location of targets for follow-up drilling are included in the announcement. All drill collars, hole surveys and assays >0.05 g/t, are tabulated above. Analyses <0.05 g/t are not material to this announcement. Significant intersections are included to demonstrate that the project has anomalous values of gold in the weathered basement. The significant intersections are shown with the best assay in each hole to demonstrate the scale of anomalous gold in basement. Results may not have been reported historically by individual companies and are available from the DMIRS WAMEX system (see https://www.dmp.wa.gov.au/WAMEX-Minerals-Exploration-1476.aspx: Report A119961).
Data aggregation methods	<ul style="list-style-type: none"> In reporting Exploration Results, weighting averaging techniques, maximum and/or minimum grade truncations (e.g. cutting of high grades) and cut-off grades are usually Material and should be stated. Where aggregate intercepts incorporate short lengths of high-grade results and longer lengths of low-grade results, the procedure used for such aggregation should be stated and some typical examples of such aggregations should be shown in detail. The assumptions used for any reporting of metal equivalent values should be clearly stated. 	<ul style="list-style-type: none"> Historical assays were reported over various intervals. Intersections were only reported where the intervals were of identical length, sample and analytical method. Intervals that comprise more than one sample have been reported using length-weighted averages (sum (assay * interval)/total interval). A cut-off grade of 0.1 g/t Au has been used for the reported intervals for both the assay and the intersection. Where waste (i.e.: assays are below cut-off grade) is included in the intercept, no more than one meter of waste has been included in the intersection. Metal equivalents have not been used.
Relationship between mineralisation widths and intercept lengths	<ul style="list-style-type: none"> These relationships are particularly important in the reporting of Exploration Results. If the geometry of the mineralisation with respect to the drill hole angle is known, its nature should be reported. If it is not known and only the down hole lengths are reported, there should be a clear statement to this effect (e.g. 'down hole length, true width not known'). 	<ul style="list-style-type: none"> The drilling is both vertical and angled. Down hole lengths are reported and it is unknown if these are true thicknesses. Given the holes are vertical and the sequence is steeply dipping, the intersections are unlikely to be true thickness.
Diagrams	<ul style="list-style-type: none"> Appropriate maps and sections (with scales) and tabulations of intercepts should be included for any significant discovery being reported. These should include, but not be limited to a plan view of drill hole collar locations and appropriate sectional views. 	<ul style="list-style-type: none"> Representative maps have been included in the report along with documentation.
Balanced reporting	<ul style="list-style-type: none"> Where comprehensive reporting of all Exploration Results is not practicable, representative reporting of both low and high grades and/or widths should be practiced to avoid misleading reporting of 	<ul style="list-style-type: none"> Selected intercepts are reported but the maximum assay in each hole is shown on the plans.



Criteria	JORC Code Explanation	Commentary
	<i>Exploration Results.</i>	
Other substantive exploration data	<ul style="list-style-type: none">• <i>Other exploration data, if meaningful and material, should be reported including (but not limited to): geological observations; geophysical survey results; geochemical survey results; bulk samples – size and method of treatment; metallurgical test results; bulk density, groundwater, geotechnical and rock characteristics; potential deleterious or contaminating substances.</i>	<ul style="list-style-type: none">• Nelson have visited the project area twice and have begun re-sampling the last sample in each hole. This work is ongoing.• Previous explorers have also completed airborne magnetic surveys.• Re-processing of Hyperspectral data has not identified anything new but will be reviewed as work continues.
Further work	<ul style="list-style-type: none">• <i>The nature and scale of planned further work (e.g. tests for lateral extensions or depth extensions or large-scale step-out drilling).</i>• <i>Diagrams clearly highlighting the areas of possible extensions, including the main geological interpretations and future drilling areas, provided this information is not commercially sensitive.</i>	<ul style="list-style-type: none">• An initial aircore drilling program will define areas of interest and will be followed up with a closer spaced aircore drilling program to define RC drilling targets.• A full evaluation of the Company's projects is ongoing.