



ASX:GBZ

# AGM Presentation

29 November 2023

# Important notices

This Document is not a Prospectus nor an Offer to Subscribe for Shares and Options (the “New Securities”) in any jurisdiction. The distribution of this Document in jurisdictions outside of Australia may be restricted by law. Any person who comes into possession of this Document in jurisdictions outside Australia should observe any such restrictions. Nothing in this Document is to be construed as authorising the distribution, or the offer or sale of the New Securities in any jurisdiction other than Australia, and GBM does not accept any liability in this regard. Failure to comply with these restrictions may constitute a violation of applicable securities laws. In particular, the New Securities have not been, and will not be, registered under the United States Securities Act of 1933, as amended (“US Securities Act”), or the securities laws of any state or other jurisdiction of the United States, and may not be offered or sold in the United States except in transactions exempt from, or not subject to, the registration requirements of the US Securities Act and applicable US state securities laws. See the section of this presentation titled “Foreign selling restrictions” for more information.

GBM and its Directors, employees and consultants make no representations or warranty as to the accuracy, reliability or completeness of this document, and have no liability, including liability to any person by reason of negligence of, or contained in or derived from, or for any omissions from this document, except liability under statute that cannot be excluded.

This document contains reference to certain targets and plans of GBM which may or may not be achieved. The performance of GBM may be influenced by a number of factors, uncertainties and contingencies, many of which are outside the control of GBM and its directors, staff and consultants.

The information in this report that relates to Exploration Targets, Exploration Results and Mineral Resources is based on information compiled by Peter Mullens, who is a Fellow of The Australasian Institute of Mining and Metallurgy. Peter Mullens is an employee of the company and is a holder of shares and options in the company. Mr Mullens has sufficient experience which is relevant to the style of mineralisation and type of deposit under consideration and to the activity which he is undertaking to qualify as a Competent Person as defined in the 2012 Edition of the ‘Australasian Code for Reporting of Exploration Results, Mineral Resources and Ore Reserves’. Mr Mullens consents to the inclusion in the report of the matters based on his information in the form and context in which it appears.

The Company confirms that it is not aware of any new information or data that materially affects the information included in the original market announcements and, in the case of estimates of Mineral Resources that all material assumptions and technical parameters underpinning the estimates in the relevant market announcement continue to apply and have not materially changed.

The Company confirms that the form and context in which the Competent Person’s findings are presented have not materially changed from the original market announcement.

This presentation may contain forward-looking statements including, but not limited to, comments regarding the timing and content of upcoming work programs, geological interpretations, receipt of property titles, potential mineral recovery processes, and other related matters. Forward-looking statements address future events and conditions and therefore involve inherent risks and uncertainties. The Company’s current projects in Australia are at an early stage and all estimates and projections are based on limited, and possibly incomplete data. More work is required before geological and economic aspects can be confidently modelled. Actual results may differ materially from those currently anticipated in this presentation. No representation or prediction is intended as to the results of future work, nor can there be any guarantee that estimates and projections herein will be sustained in future work or that the Project will otherwise prove to be economic.

It is a requirement of the ASX Listing Rules that the reporting of ore reserves and mineral resources in Australia comply with the Joint Ore Reserves Committee’s Australasian Code for Reporting of Mineral Resources and Ore Reserves (“JORC Code”). Investors outside Australia should note that while ore reserve and mineral resource estimates of GBM in this Document comply with the JORC Code (such JORC Code-compliant ore reserves and mineral resources being “Ore Reserves” and “Mineral Resources” respectively), they may not comply with the relevant guidelines in other countries and, in particular, do not comply with (i) National Instrument 43-101 (Standards of Disclosure for Mineral Projects) of the Canadian Securities Administrators (the “Canadian NI 43-101 Standards”); or (ii) Industry Guide 7, which governs disclosures of mineral reserves in registration statements filed with the US Securities and Exchange Commission (the “SEC”). Information contained in this Document describing mineral deposits may not be comparable to similar information made public by companies subject to the reporting and disclosure requirements of Canadian or US securities laws. In particular, Industry Guide 7 does not recognise classifications other than proven and probable reserves and, as a result, the SEC generally does not permit mining companies to disclose their mineral resources in SEC filings. You should not assume that quantities reported as “resources” will be converted to reserves under the JORC Code or any other reporting regime or that GBM will be able to legally and economically extract them.

# Corporate Summary

## Capital Structure

Ordinary shares on issue	620.3 million
Unlisted options (>\$0.06, various expiries)	17.3 million
Performance Rights	1.1 million
Share Price (28 November 2023)	A\$0.013
<b>Market Capitalisation (28 November 2023)</b>	<b>A\$8.1 million</b>



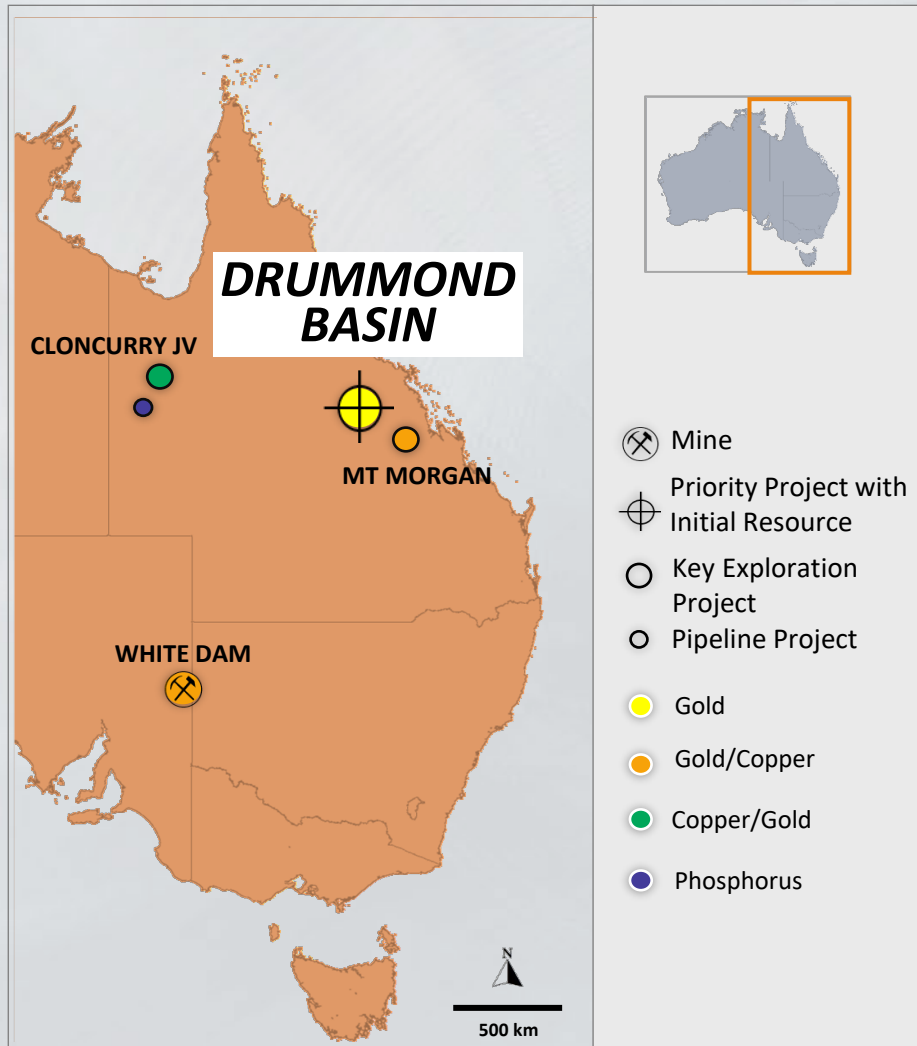
## Convertible Note

Principal outstanding	A\$7.5m
Pre-paid interest (paid in CY 22)	A\$1.5m
<b>Net liability outstanding (end Nov 23)</b>	<b>A\$6.0m</b>
Maturity	\$5m Oct 25, \$2.5m Dec 25

## Funding

Cash and Receivables (30 Sep 23)	A\$1.4m
Listed Investments (ASX:C29 and TSX:NVO) <sup>1</sup>	~A\$0.9m

# Our Business – Focus on Drummond Basin



## Focus on discovering 100% owned, quality gold ounces at core Drummond Basin projects - Twin Hills and Yandan

- Expand the current GBM 1.84 Moz Au resource base<sup>1</sup> → 2 to 3 Moz Au
- Prioritize targets with potential to deliver high grade ounces → +2.0 g/t Au open pit, + 4.0 g/t Au underground
- → Catalysts:
  - Larger scale development / acquisition by Tier 1 producer
  - Low EV/ounce re-rating

## Accelerate exploration of extensive Drummond Basin portfolio

- GBM exploration program planned<sup>2,3</sup> focused on expanding Twin Hills and Yandan resource base
- Newmont Mining Mt Coolon JV – A\$25 m over 6 years, including commitment for 20,000 m of drilling for 75% - currently GBM 100%, NEM spend to Sep 23 ~A\$6.1m

## Continue successful divestment strategy to provide funding

White Dam, SA (gold/copper) - Divestment and funding options progressing, reviewing options to integrate Portia Project

Mt Morgan, QLD (gold/copper) - Exposure via spin out

Cloncurry, QLD (copper/gold) - Exposure via partner funded exploration adjacent to Evolution Mining's Ernest Henry Copper – Gold Mine

- ~A\$1 m commitment by JV partner (Nippon Mining Australia) to 2023/24 exploration, drilling planned for early 2024, on targets ~7 kms from Ernest Henry mine<sup>4</sup>.
- A\$55m Farm-in for 90%, currently GBM 44%, Nippon spend to Sep 23 ~A\$18.3m

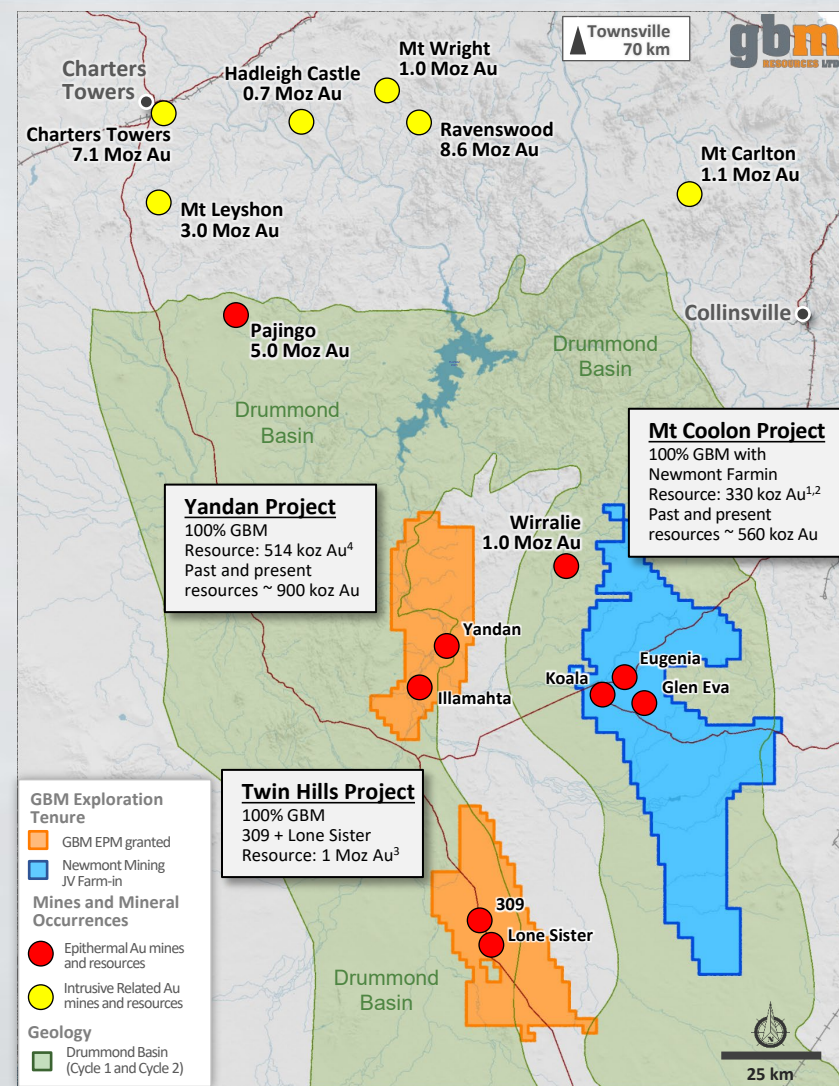
1. GBM ASX Release: 14/03/2023, Results of Yandan Mineral Resource Update and refer to Appendix  
2. GBM ASX Release: 22/03/2023, New Yandan Geology Model Defines Compelling Targets  
3. GBM ASX Release: 28/04/2023, Compelling Target Areas Identified at Twin Hills  
4. GBM AXX Releases, 14/04/2023, Cloncurry Project - Drilling to Commence at Mt Margaret



# GBM - 2023 progress and 2024 plans

- Significant increase in gold resources and quality<sup>1</sup> in Drummond Basin
  - ✓ December 2022, Twin Hills resource update
  - ✓ March 2023, Yandan resource update
- Quality tenement package attracted interest of Newcrest (now Newmont) with significant expenditure (A\$6.1 to Sep 23) in last 12 months, drilling planned for early 2024
- Reduction in Convertible Note debt from \$10m to \$7.5m with Malmsbury project interest sale (Net Convertible Note debt ~\$6.0m, with prepaid interest to end 2025)
- Continue successful Non-Core asset disposals to further reduce Convertible Note debt in 2024.
  - ✓ Sell Novo shares, share consideration from Malmsbury project interest sale
  - ✓ White Dam sale targeted by June 30, 2024
- Pursue funding models to advance Twin Hills and Yandan exploration projects
- Manage Nippon Mining Australia exploration JV on Cloncurry exploration tenements

# GBM - Drummond Basin Core Exploration Projects



Key reasons that GBM is in Drummond Basin, Queensland, Australia

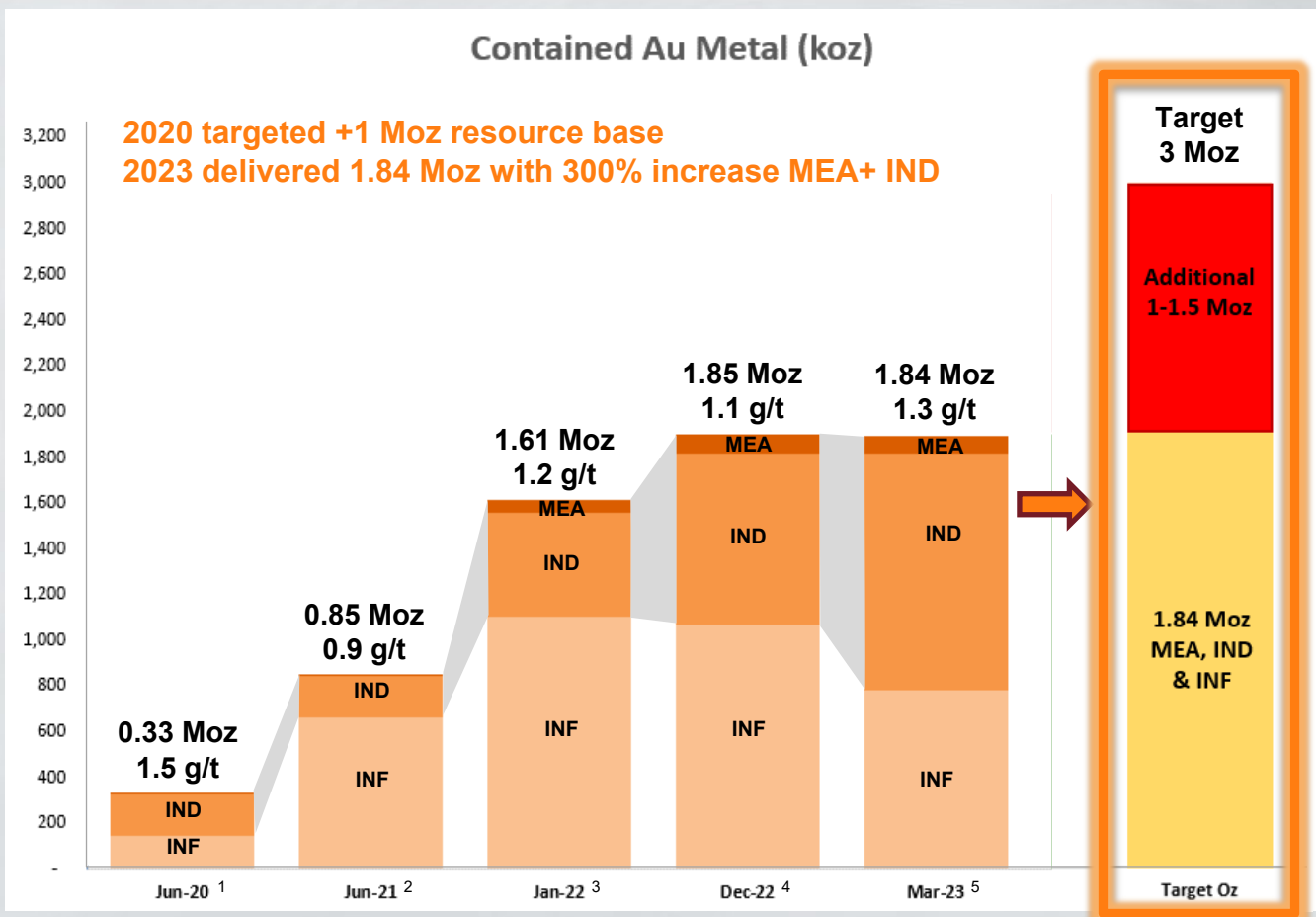
- Significant history of resource discovery in Drummond
- Discoveries were made in the 1980's with little work since
- Substantial change in the understanding of hydrothermal systems in last 20 years
- Clear opportunity for GBM to apply the new understanding
- This has already resulted in updated resources at Twin Hills (increase of 360 koz Au) and clear targets at Yandan

Why invest in GBM?

- Large prospective tenement package assembled in last 3 years
- Significant JORC resource base (~1.8 Moz Au) – with higher grade resources at higher cut-off grades
- Most resources on granted mining leases
- Strong epithermal geological knowledge base in team
- Tier 1 JV partner in Newmont at Mt Coolon Project

1. GBM ASX Release: 04/012/2017, Scoping Study Demonstrates the Potential Economic Viability of Recommending the Mount Coolon Gold Project, Queensland Project  
 2. GBM ASX Release: 23/12/2020, Mt Coolon and Yandan Combined Resources Total 852,000 oz, following completion of Yandan acquisition  
 3. GBM ASX Release: 05/12/2022, Twin Hills Gold Project Upgrades to ~ 1Moz Mineral Resource  
 4. GBM ASX Release: 15/03/2023, Results of Yandan Mineral Resource Update

# GBM's Drummond Resource Base



- 90% of resource ounces on permitted mining leases for potential accelerated development
  - Higher grade Measured + Indicated + Inferred core to resources at 1.0 g/t cut off
    - Yandan 2.2 Mt @ 3.6 g/t Au
    - 309 5.7 Mt @ 2.4 g/t Au
    - Lone Sister 5.6 Mt @ 2.0 g/t Au
- 13.5 Mt @ 2.4 g/t Au for a contained 1.0 Moz Au**

Drummond Basin Resources	Resource Category									Total		
	Measured			Indicated			Inferred					
	000' t	Au g/t	Au oz	000' t	Au g/t	Au oz	000' t	Au g/t	Au oz	000' t	Au g/t	Au oz
June 2020 <sup>1</sup>	114	1.7	6,200	3,589	1.6	181,900	2,919	1.5	142,400	6,653	1.5	330,500
June 2021 <sup>2</sup>	114	1.7	6,200	3,589	1.6	181,900	24,419	0.8	663,400	28,153	0.9	851,500
Jan 2022 <sup>3</sup>	700	2.5	56,500	9,169	1.5	451,900	31,104	1.1	1,103,800	41,003	1.2	1,612,200
Dec 2022 <sup>4</sup>	944	2.6	80,100	14,879	1.6	753,200	35,409	0.9	1,067,400	51,263	1.1	1,850,700
March 2023 <sup>5</sup>	944	2.6	80,100	21,298	1.5	1,033,900	23,342	1.0	780,200	45,655	1.3	1,844,200

1. GBM ASX Release: 04/01/2017, Scoping Study Demonstrates the Potential Economic Viability of Recommencing the Mount Coolon Gold Project, Queensland Project  
 2. GBM ASX Release: 23/12/2020, Mt Coolon and Yandan Combined Resources Total 852,000 oz, following completion of Yandan acquisition  
 3. GBM ASX Release: 02/02/2022, Significant Resource Upgrade at Twin Hills Project  
 4. GBM ASX Release: 05/12/2022, Twin Hills Gold Project Upgrades to ~ 1Moz Mineral Resource  
 5. GBM ASX Release: 15/03/2023, Results of Yandan Mineral Resource Update

March 2023 Resources stated at 0.4 g/t cut-off for open pit resources at Koala, Eugenia, Glen Eva, East Hill, Illamahta and Twin Hills. A 0.3 g/t cut-off was used for Yandan south open pit. A cut-off of 2.0 g.t was used for underground resources at all projects.



# GBM - Newmont Mt Coolon Farm-in

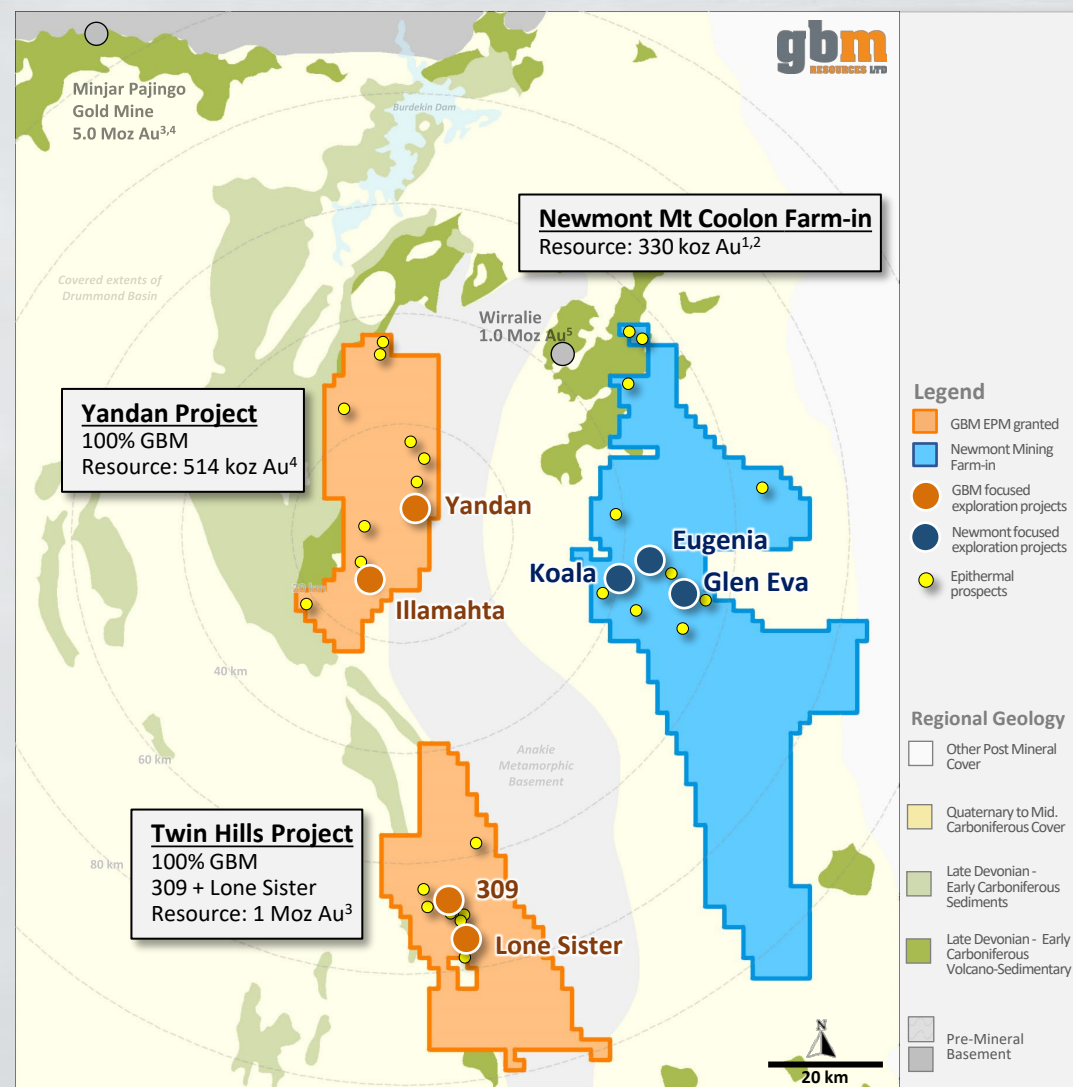
- Accelerates exploration of prospective large Drummond tenement package
- Significant exploration spend on Mt Coolon farm-in by Tier 1 gold producer
- Allow GBM to focus \$ and exploration team on Twin Hill and Yandan exploration

Newmont Mt Coolon Farm-in → targeting large scale high grade epithermal gold

- Minimum commitment: A\$2m (2 years)
- Spend to 75% interest: Totalling A\$25m (6 years) includes a minimum commitment of 20,000 m of drilling
- Newcrest (now Newmont) is the operator, with support from GBM

2022/23 and 2023/24 current Newmont Mt Coolon exploration program

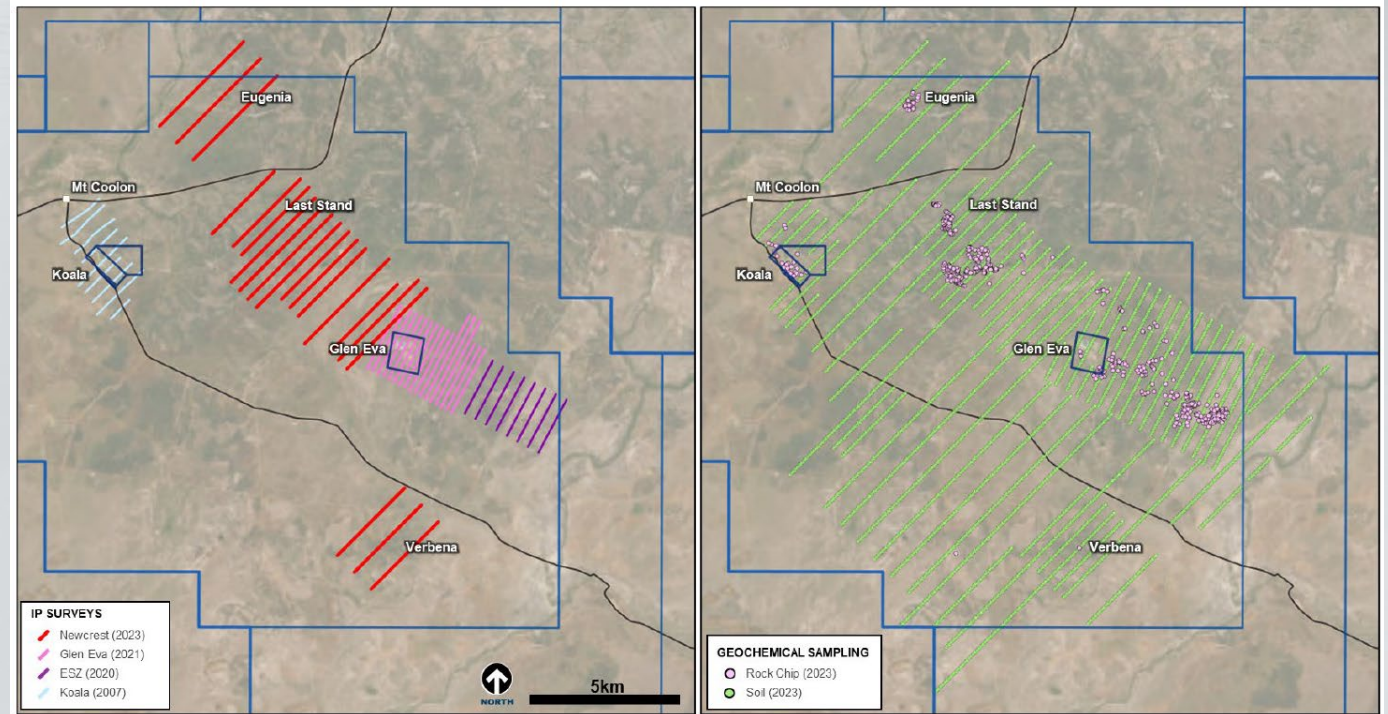
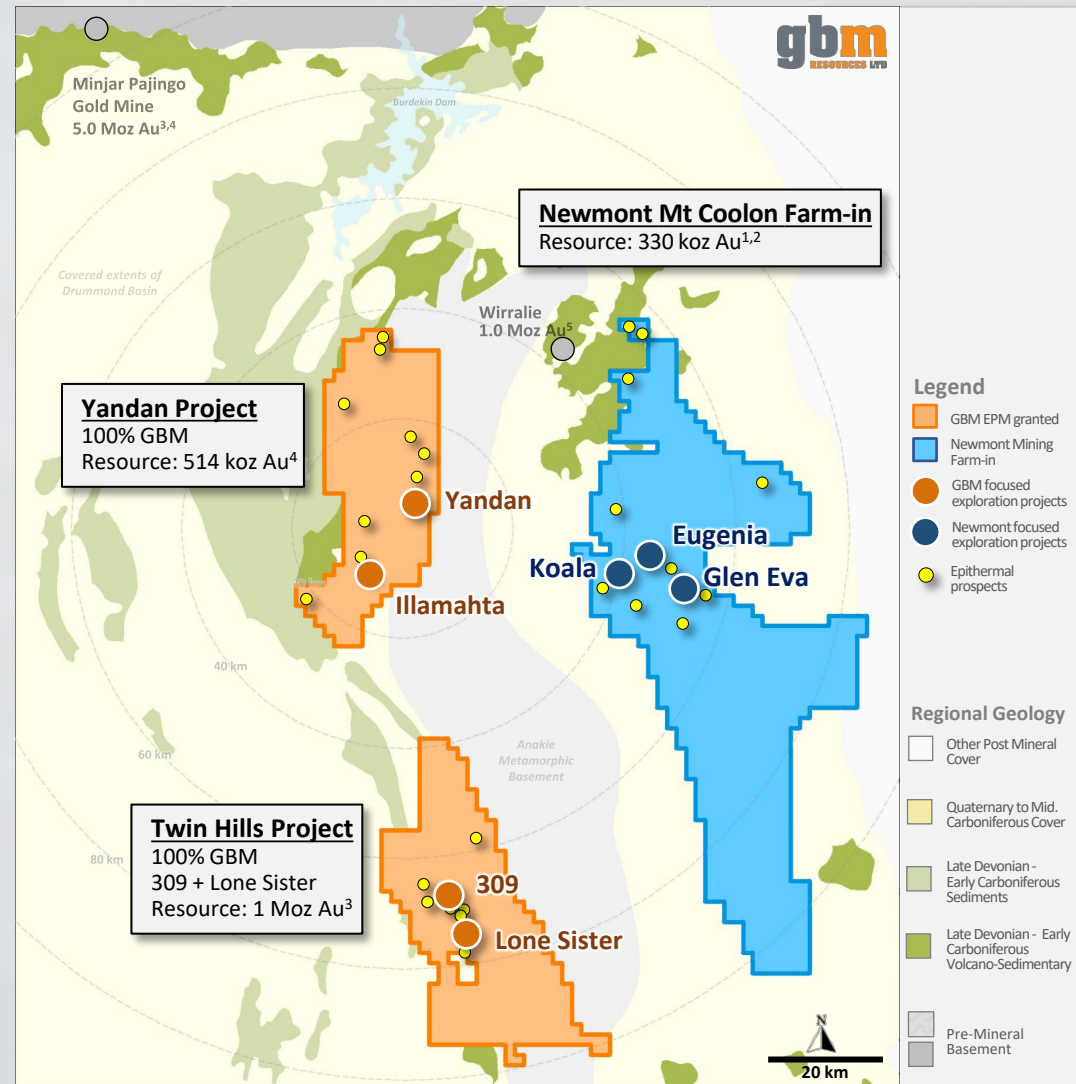
- Historical samples to be assayed (or re-assayed) Apr – Jun 23
- IP geophysics and soils along 2 structural corridors Jun – Sep 23
- Magnetic and Radiometric survey Apr – Jun 23
- Activities above will input into prioritisation of drilling FY 24



1. GBM ASX Release: 04/012/2017, Scoping Study Demonstrates the Potential Economic Viability of Recommencing the Mount Coolon Gold Project, Queensland Project  
 2. GBM ASX Release: 23/12/2020, Mt Coolon and Yandan Combined Resources Total 852,000 oz, following completion of Yandan acquisition  
 3. GBM ASX Release: 05/12/2022, Twin Hills Gold Project Upgrades to ~ 1Moz Mineral Resource  
 4. GBM ASX Release: 15/03/2023, Results of Yandan Mineral Resource Update



# GBM - Newmont Mt Coolon Farm-in

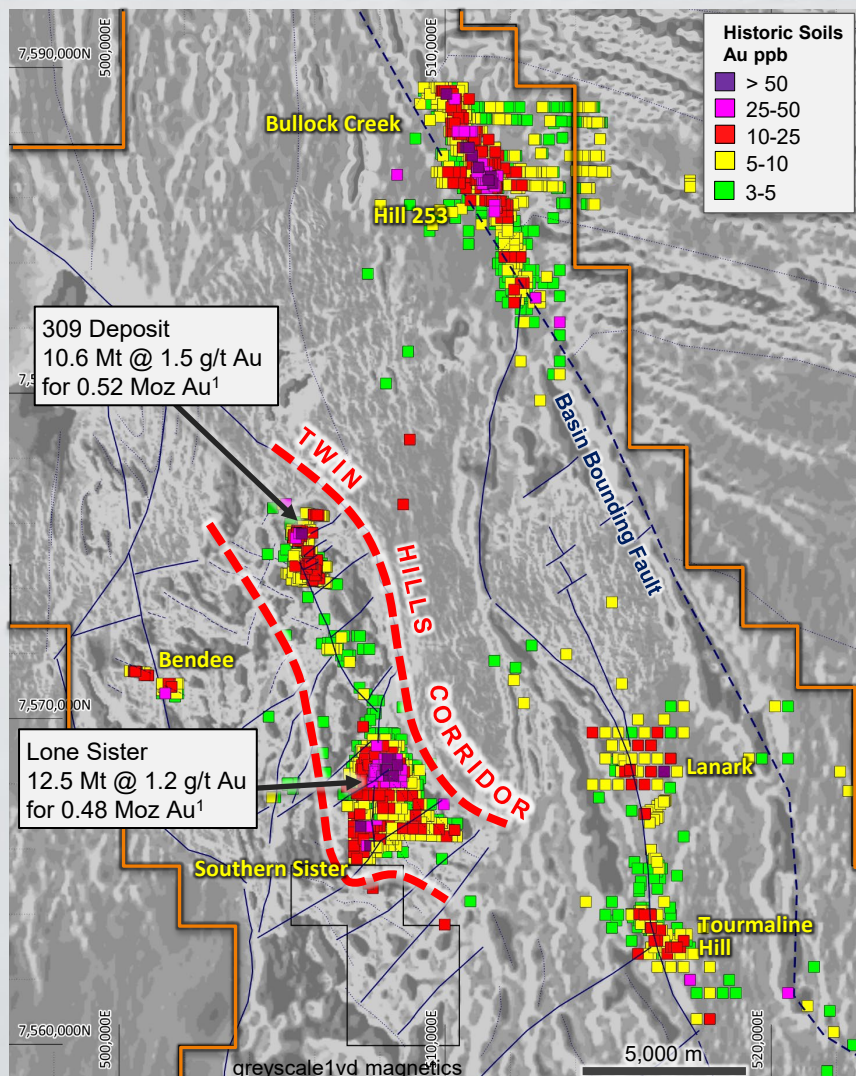


Maps showing completed IP (71 line km completed), above left and soil lines centred around the structural corridors of Koala, Eugenia and Glen Eva, above right.  
(Total 6,200 soil samples collected to date, along with 603 rock chip samples collected as part of initial geological reconnaissance program).

1. GBM ASX Release: 04/12/2017, Scoping Study Demonstrates the Potential Economic Viability of Recommending the Mount Coolon Gold Project, Queensland Project  
2. GBM ASX Release: 23/12/2020, Mt Coolon and Yandan Combined Resources Total 852,000 oz, following completion of Yandan acquisition  
3. GBM ASX Release: 05/12/2022, Twin Hills Gold Project Upgrades to ~ 1Moz Mineral Resource  
4. GBM ASX Release: 15/03/2023, Results of Yandan Mineral Resource Update

5. GBM ASX Release: 24/08/2023, Extensive work programs underway in the Drummond Basin

# GBM Twin Hills - District Scale Exploration



- 1.0 Moz Au and 4.8 Moz Ag in M + Ind + Inf resources
- All on permitted mining lease
- Priority resource extension and near resource exploration targets
- Large underexplored prospective district scale tenement package

- Clear focus on drill targets in highly prospective +10 km long Twin Hills Corridor targets <sup>2</sup>
- At the tenement scale, very underexplored but good historic datasets to leverage
- Recent previous owners looking for shallow high resources to truck to Pajingo operation
- Numerous broad scale soil anomalies have not been systematically tested
- Includes two 8 km long soil anomalies at Bullock Creek and Lanark - Tourmaline Hill prospects along with the Bendee anomaly

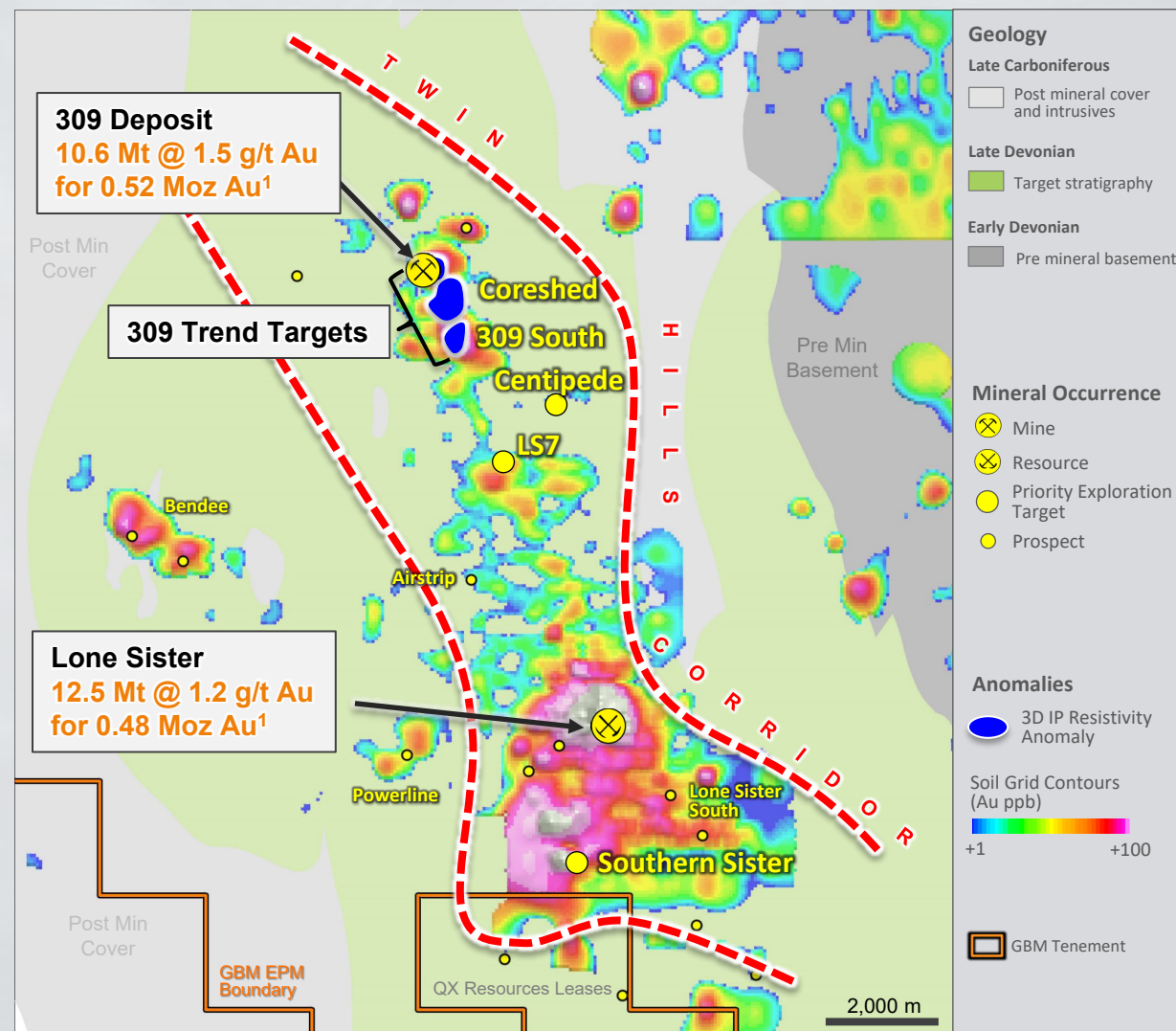
Twin Hills ML Resources <sup>1</sup>	Cut off Grade (g/t)	Resource Category									Total		
		Measured			Indicated			Inferred					
		000' t	Au g/t	Au oz	000' t	Au g/t	Au oz	000' t	Au g/t	Au oz	000' t	Au g/t	Au oz
309 - OP	0.4	830	2.8	73,900	5,480	1.3	235,200	3,650	1.1	129,800	9,960	1.4	438,900
309 - UG	2.0	-	-	-	190	4.0	24,500	480	3.9	59,900	670	3.9	84,400
Lone Sister - OP	0.4	-	-	-	5,250	1.3	227,300	6,550	0.9	188,500	11,800	1.1	415,800
Lone sister - UG	2.0	-	-	-	370	2.9	34,300	310	2.6	25,800	680	2.7	60,100
<b>Total:</b>		<b>830</b>	<b>2.8</b>	<b>73,900</b>	<b>11,290</b>	<b>1.6</b>	<b>571,300</b>	<b>10,990</b>	<b>1.1</b>	<b>404,000</b>	<b>23,110</b>	<b>1.3</b>	<b>999,200</b>

1. GBM ASX Release: 05/12/2022, Twin Hills Gold Project Upgrades to ~ 1 Moz Mineral Resource - Total measured indicated and inferred resource from open pit above ORL and underground below ORL

2. GBM ASX Release: 28/04/2023, Compelling Target Areas Identified at Twin Hills



# GBM Twin Hills – Resources and Priority Exploration Targets



→ Twin Hills Corridor – 10 km Corridor

→ Priority resource extension and near resource exploration drill targets

Many high grade historical intersections:

309 Deposit

- THRCD875: **140.6 m @ 5.2 g/t Au** from 154 m (731 g/m)  
incl. 8 m @ 81.8 g/t Au from 177 m
- TRCD384: 190 m @ 2.3 g/t Au from 25 m (437 g/m)  
incl. **27 m @ 7.3 g/t Au** from 100 m
- 309DD22005, **49 m @ 5.18 g/t Au** from 310 m (253 g/m)

Lone Sister Deposit

- LRCD015: **146 m @ 9.8 g/t Au** from 104 m (1,430 g/m)  
incl. 28 m @ 45.2 g/t Au from 211 m
- LRCD063 **20 m @ 14.2 g/t Au** from 247 m (284 g/m)

309 trend priority geophysics +/- geochemical targets adjacent to resource

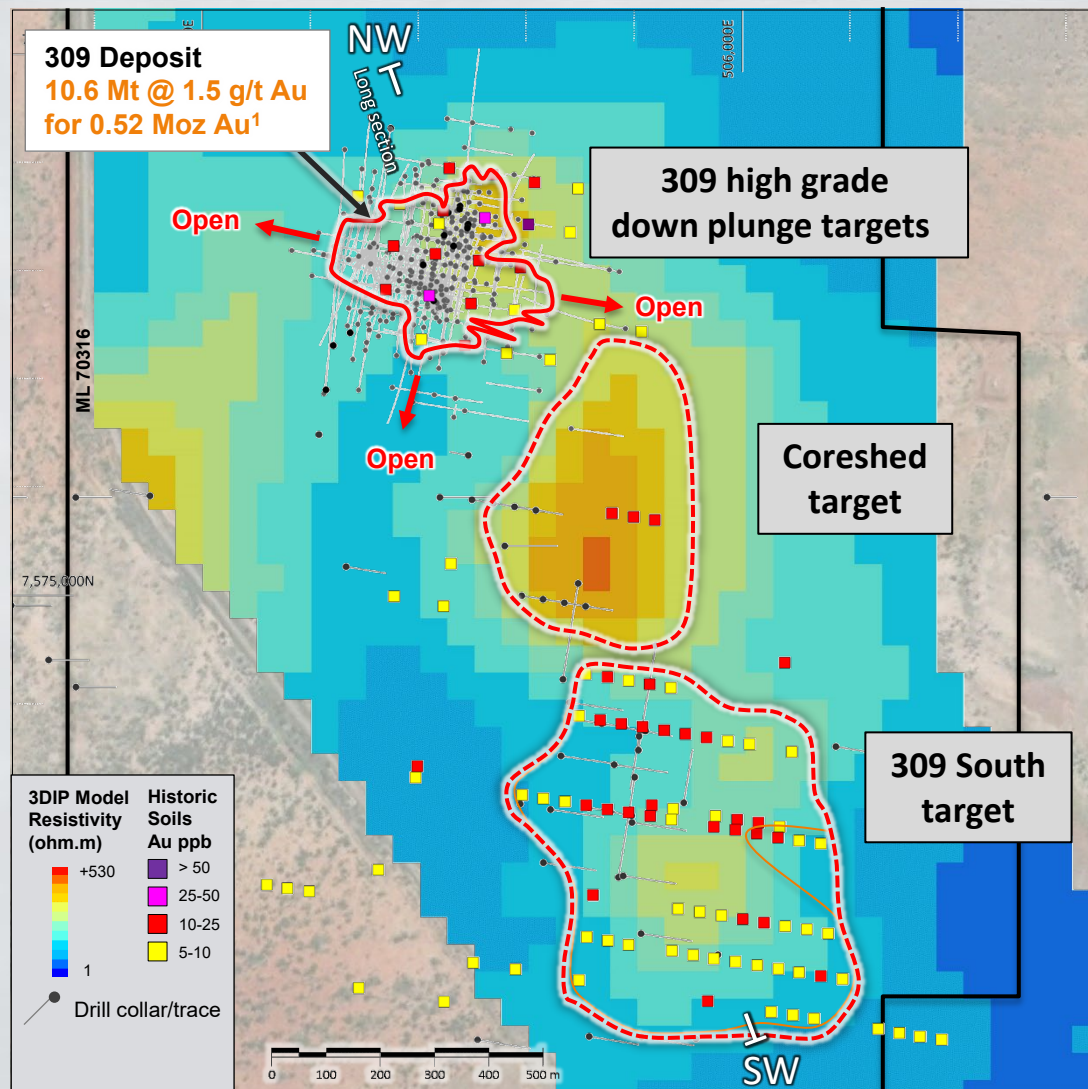
Very prospective +10 km long Twin Hills Corridor with multiple untested / undertested targets

Integrated analysis and targeting with extensive historic datasets in progress

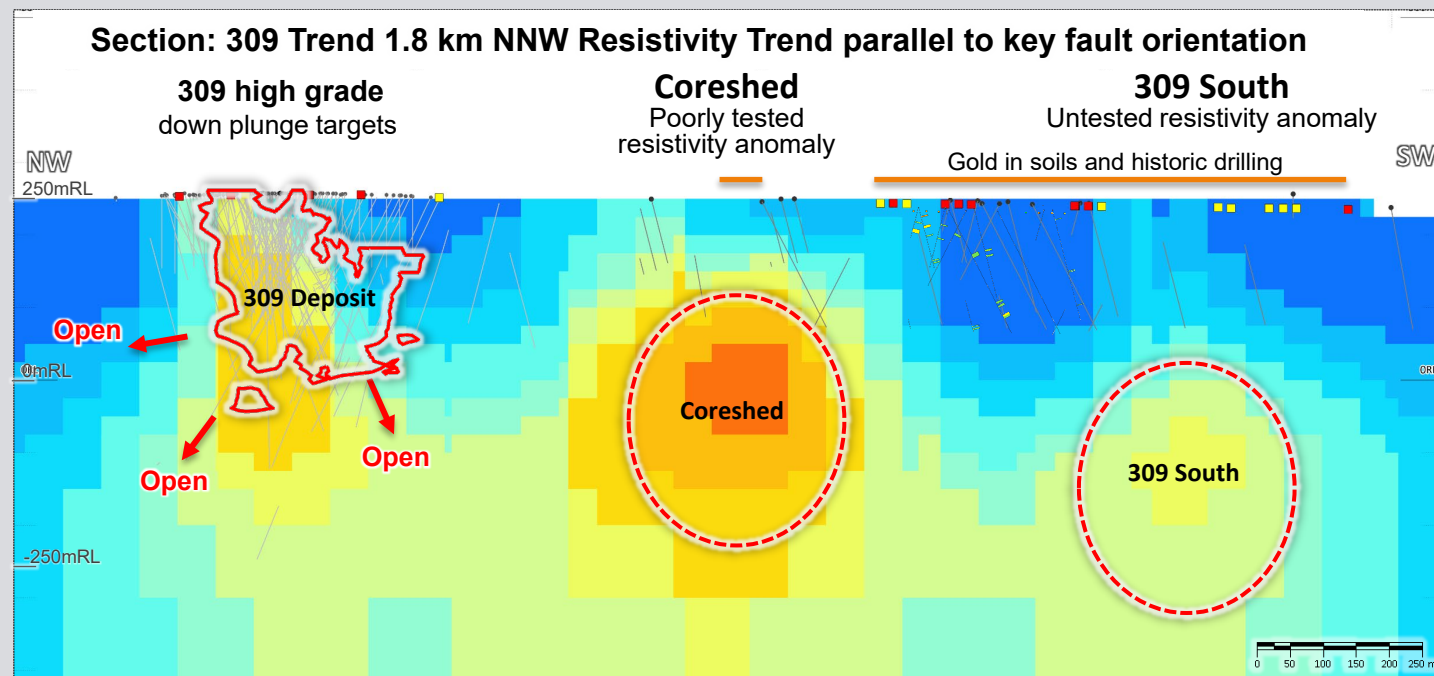
1. GBM ASX Release: 05/12/2022, Twin Hills Gold Project Upgrades to ~ 1 Moz Mineral Resource - Total measured indicated and inferred resource from open pit above ORL and underground below ORL

2. GBM ASX Release: 28/04/2023, Compelling Target Areas Identified at Twin Hills

# GBM Twin Hills - 309 Trend Drill Targets



## → 309 Trend – Compelling Coreshed and 309 South drill targets



- 309 resource outlined by IP geophysics resistivity anomaly<sup>2</sup>
- Untested or undertested Coreshed and 309 South targets
- +10 ppb Au soil anomalies at surface coincident with outcropping silicified milled matrix breccias
- Anomalous (0.5 -1.9 g/t Au) hits in historic RC drilling → no follow-up

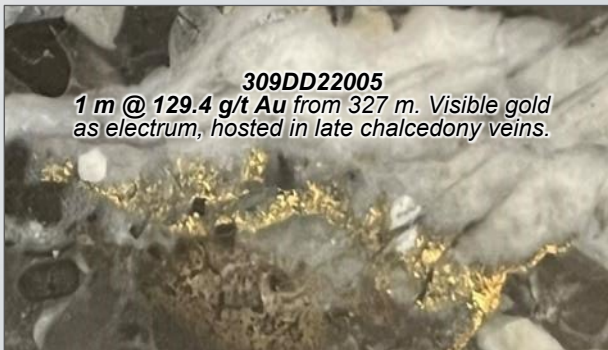
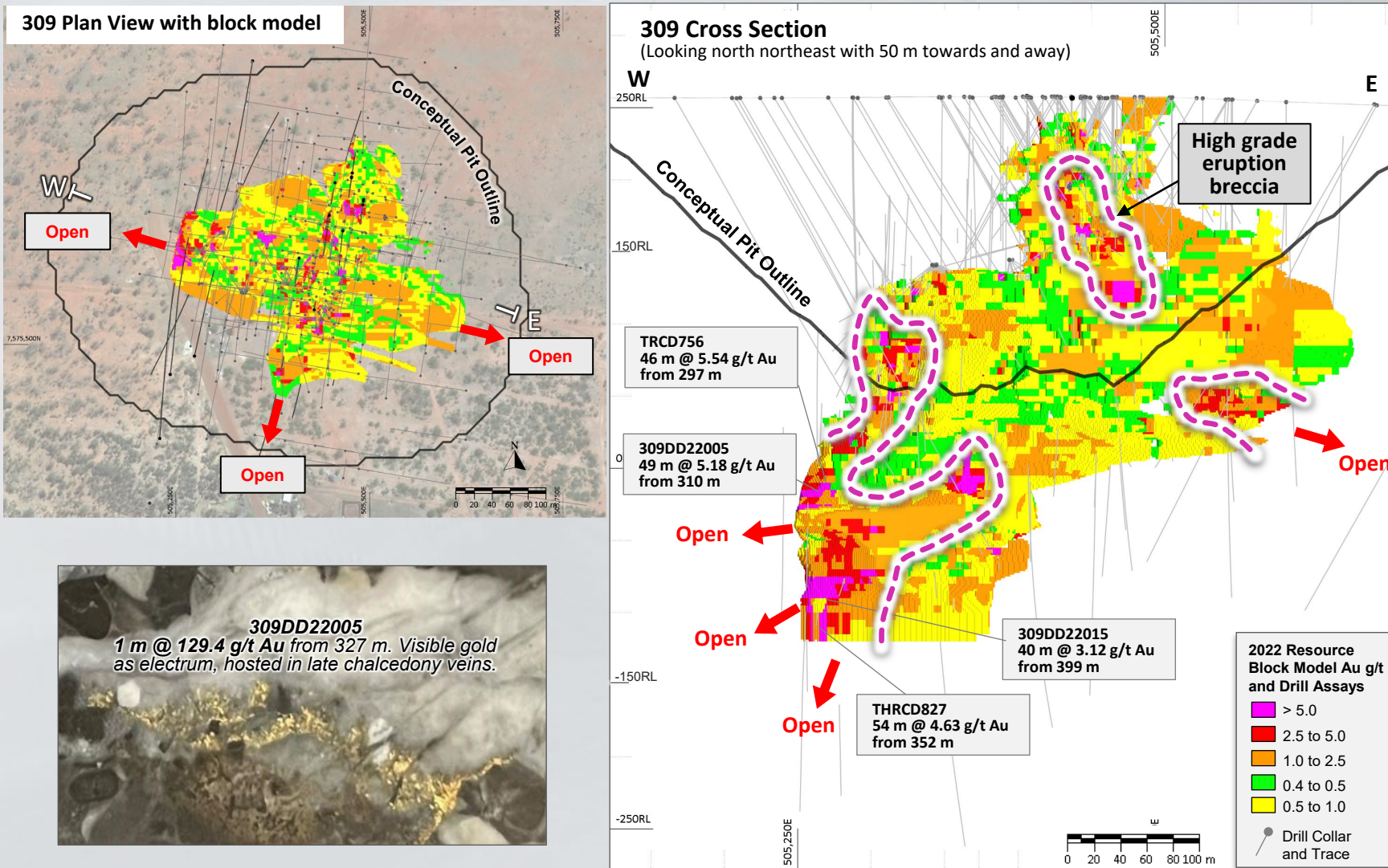
1. GBM ASX Release: 05/12/2022, Twin Hills Gold Project Upgrades to ~ 1 Moz Mineral Resource - Total measured indicated and inferred resource from open pit above 0RL and underground below 0RL

2. GBM ASX Release: 28/04/2023, Compelling Target Areas Identified at Twin Hills



# GBM Twin Hills - 309 Deposit

## High Grade Down Plunge Targets



- Bulk mineable configuration and gold grades
- High grade stage with visible gold
- 40 to 50 m wide + 4 g/t intersections open to depth
- Priority resource step out drill targets

309, M + Ind + Inf resource 10.6 Mt @ 1.5 g/t Au and 2.3 g/t Ag

Potential for open pit and bulk minable underground configuration

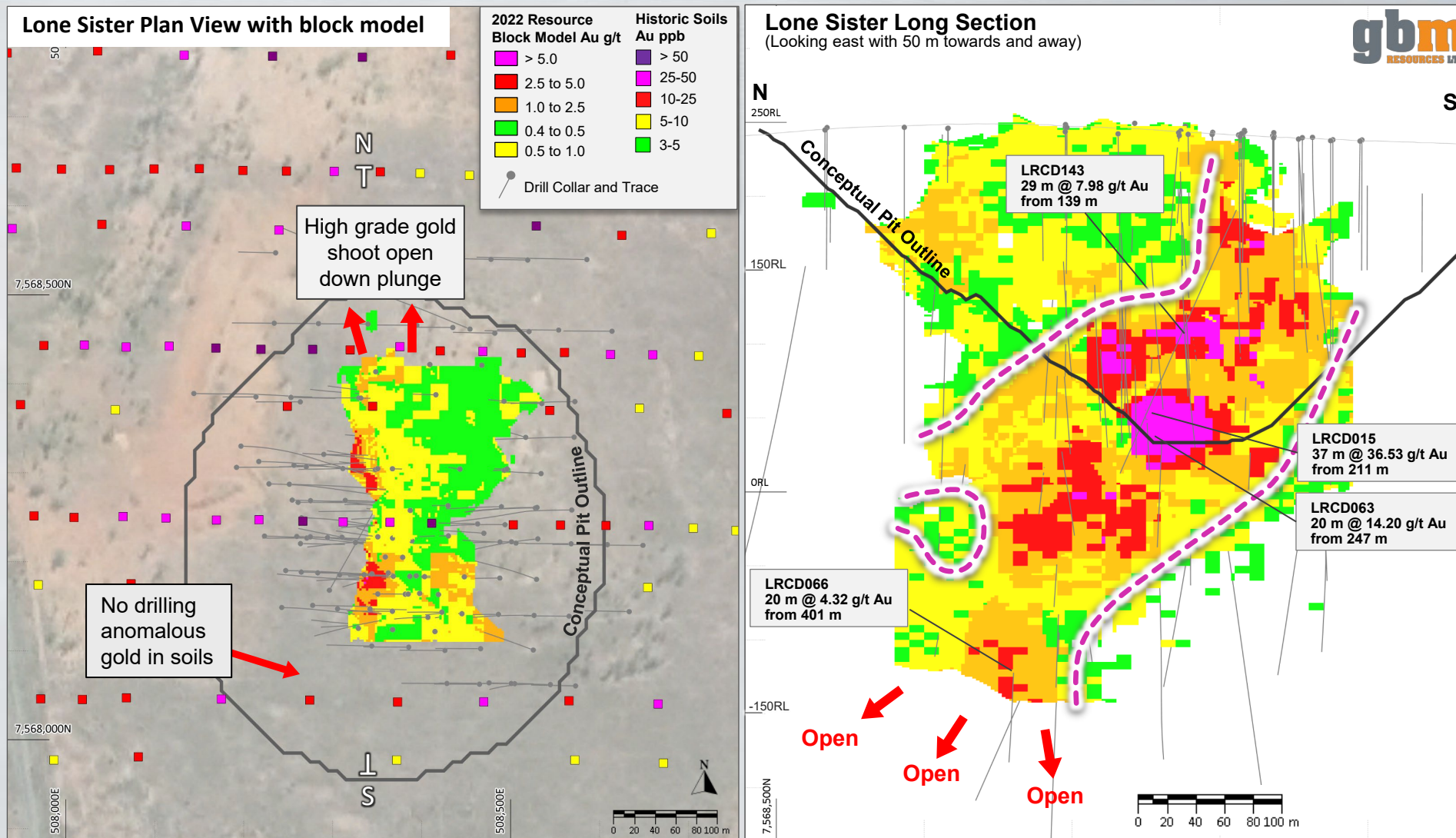
High grade sections of resource associated with late stage visible gold

Broad intervals at +4 g/t Au define priority high grade resource step out drill targets

- TRCD756, 46 m @ 5.54 g/t Au from 297 m
- 309DD22005, 49 m @ 5.18 g/t Au from 310 m
- THRCD827, 54 m @ 4.63 g/t Au from 352 m

# GBM Twin Hills - Lone Sister Deposit

## High Grade down plunge and along strike target



- Bulk mineable configuration
- Gold from surface
- High grade gold stage with 20 to 37 m wide 4 to 37 g/t Au intersections
- Priority resource step out drill targets

Lone Sister total Ind + Inf resource  
12.5 Mt @ 1.2 g/t Au and 10.0 g/t Ag

Potential for open pit style gold mineralisation from surface

Broad high-grade intersections within conceptual pit

- LRCD143, 29 m @ 7.98 g/t Au from 139 m
- LRCD015, 37 m @ 36.53 g/t Au from 211 m

Priority drill target high grade open to North

- LRCD066 20 m at 4.32 g/t Au from 401 m

Extensive gold in soils surrounding resource with limited to no drilling



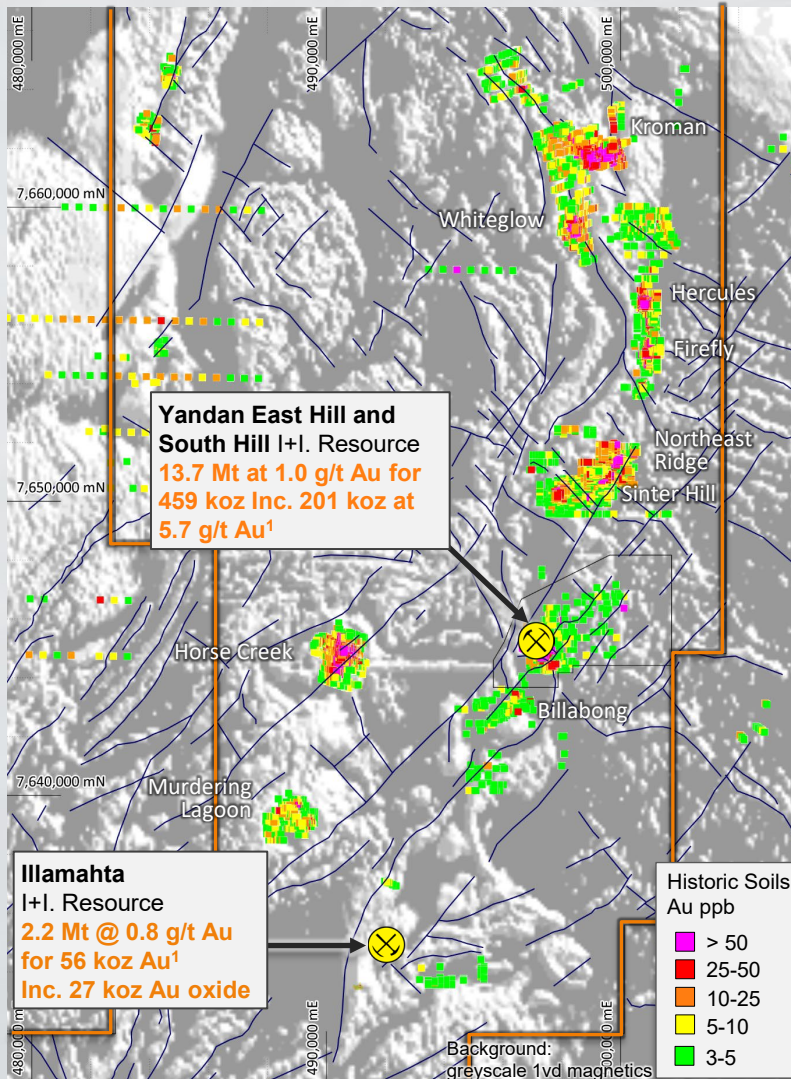
# GBM Yandan – District Scale Potential

- 515 koz Au (Ind + Inf) Yandan resources
- Most on permitted mining lease
- Yandan new priority conceptual high-grade feeder zone target
- Large underexplored prospective district scale tenement package with 11 known gold systems

**New geological understanding at Yandan highlights exciting conceptual high-grade feeder zone target**

**Evaluating undertested multi km scale epithermal alteration system at Illamahta**

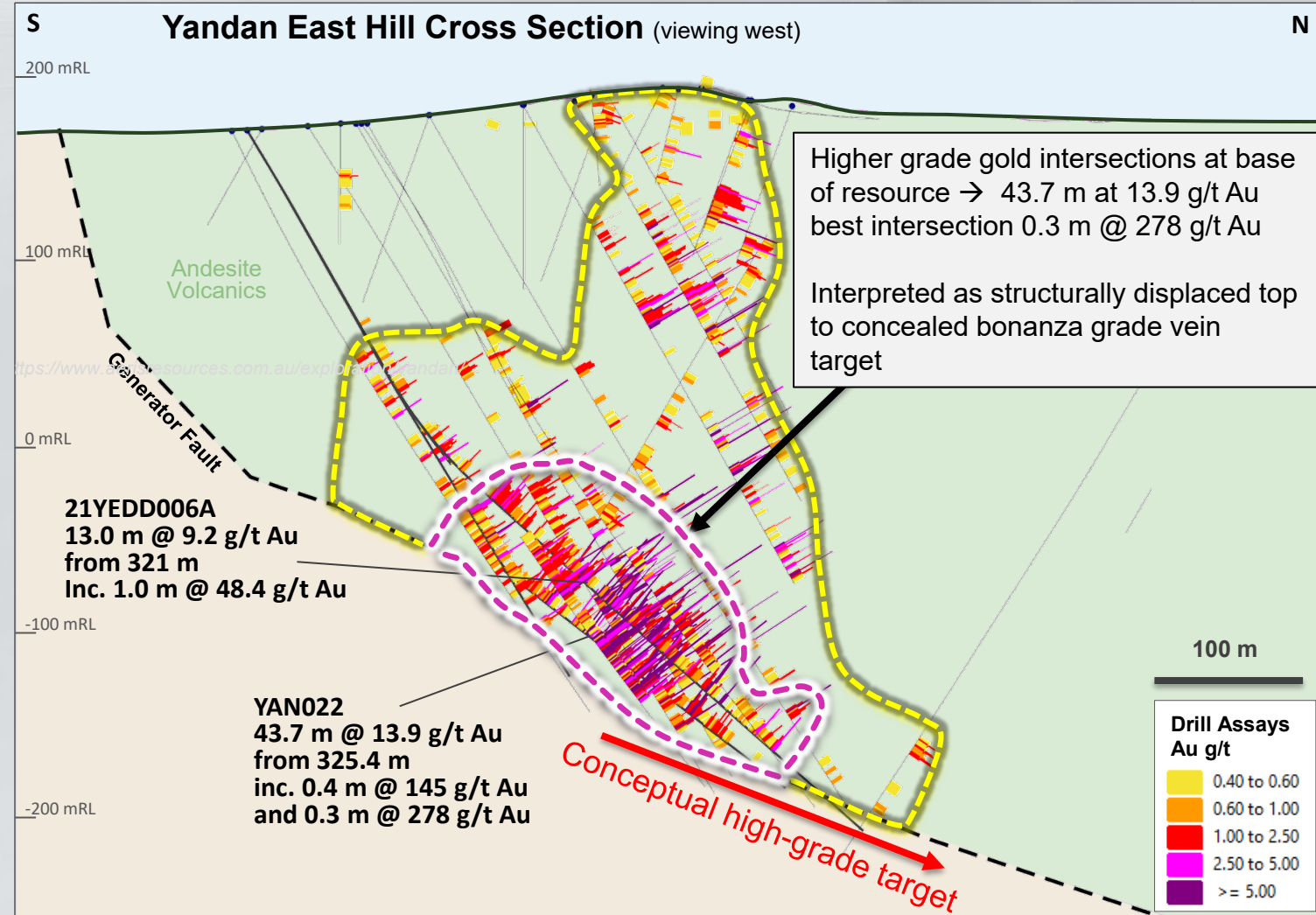
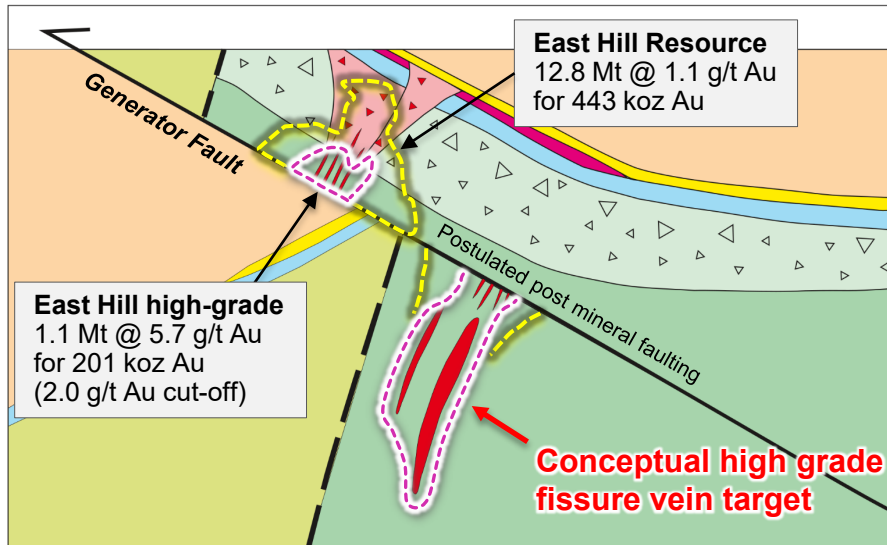
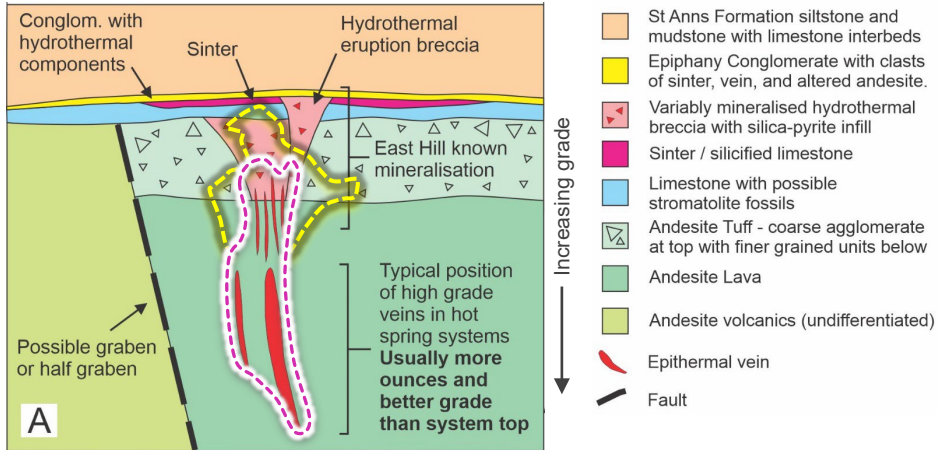
At the tenement scale very underexplored but good historic datasets to leverage and advance new round of targets



Yandan Regional Resource Inventory <sup>1</sup>		Cut off Grade (g/t)	Resource Category						Total		
			Indicated			Inferred					
			000' t	Au g/t	Au oz	000' t	Au g/t	Au oz	000' t	Au g/t	Au oz
Yandan	East Hill	0.4	4,860	1.5	240,000	7,900	0.8	203,000	12,800	1.1	443,000
	South Hill	0.3	-	-	-	900	0.6	16,000	900	0.6	16,000
	Subtotal		4,860	1.5	240,000	8,800	0.8	219,000	13,700	1.0	459,000
Illamahta	Oxide	0.4	-	-	-	1,147	0.7	26,900	1,147	0.7	26,900
	Fresh	0.4	-	-	-	1,045	0.9	28,600	1,045	0.9	28,600
	Subtotal		-	-	-	2,192	0.8	55,500	2,192	0.8	55,500
Total:			4,860	1.5	240,000	10,992	0.8	274,500	15,892	1.0	514,500

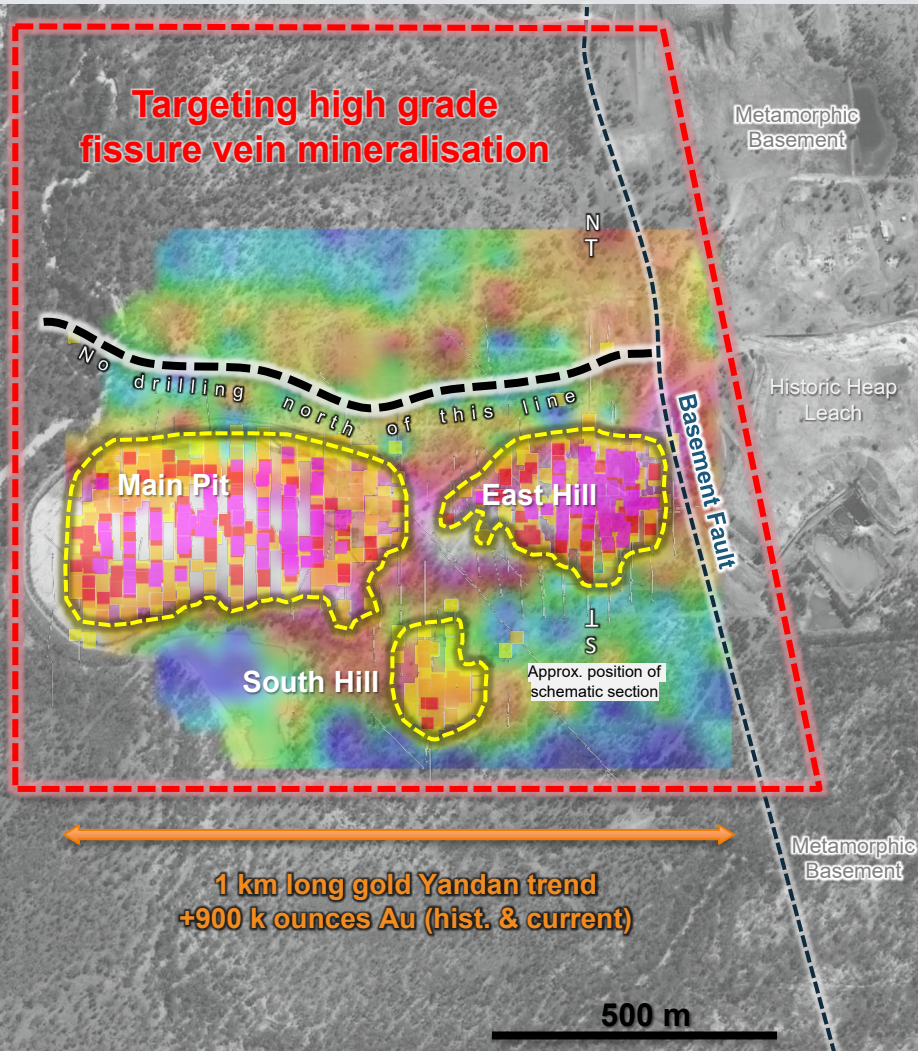
# GBM Yandan - New Geology Model with High Grade Target Concept

## Yandan Schematic Deposit Model





# GBM Yandan - Yandan Main and East Hill High-grade Feeder Zone Target

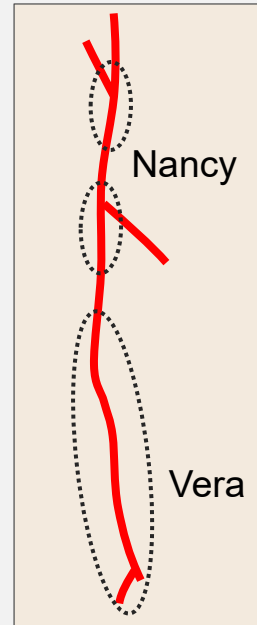


## Waihi Gold Mine – Favona Deposit

1.8 Mt at 10.3 g/t Au for 0.57 Moz Au<sup>2</sup>

Qtz Veining at 850 mRL with dashed outline of historic underground workings (2011-2014)<sup>1</sup>

At same scale to map



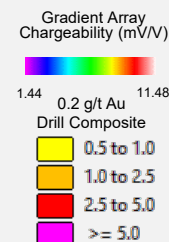
## Pajingo Gold Mine – Vera-Nancy Trend

1.67 Mt at 14.7 g/t Au for 0.78 Moz Au<sup>3</sup>

Vera-Nancy mined and remaining resources (as at Nov 2002)<sup>3</sup>

Projected to surface expression of underground mining area (black dashed outline)<sup>3</sup>

At same scale to map



- Compelling conceptual high grade fissure vein target
- New geological interpretation supported recent drill information and analogies to known hot spring fissure vein deposits

Yandan surface expression ~1 km long with +900 koz Au (historic production and current resources)

Interpreted as fault displaced upper low-grade halo and at the base of the resource the very top of the high-grade fissure vein

- YAN022, 43.7 m @ 13.9 g/t Au from 325.4 m inc. 0.4 m @ 145 g/t Au and 0.3 m @ 278 g/t Au
- 21YEDD006A, 13.0 m @ 9.2 g/t Au from 321 m Inc. 1.0 m @ 48.4 g/t Au

Scale of low-grade halo mineralisation (900 koz Au) and high grades at the epithermal veinlets at the base of drilling suggest conceptual potential for significant concealed fissure vein

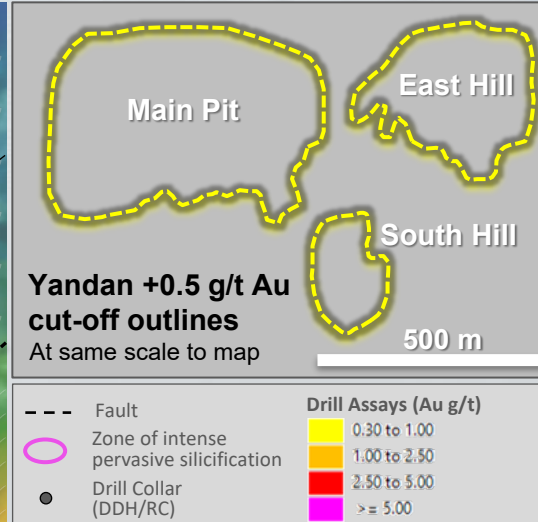
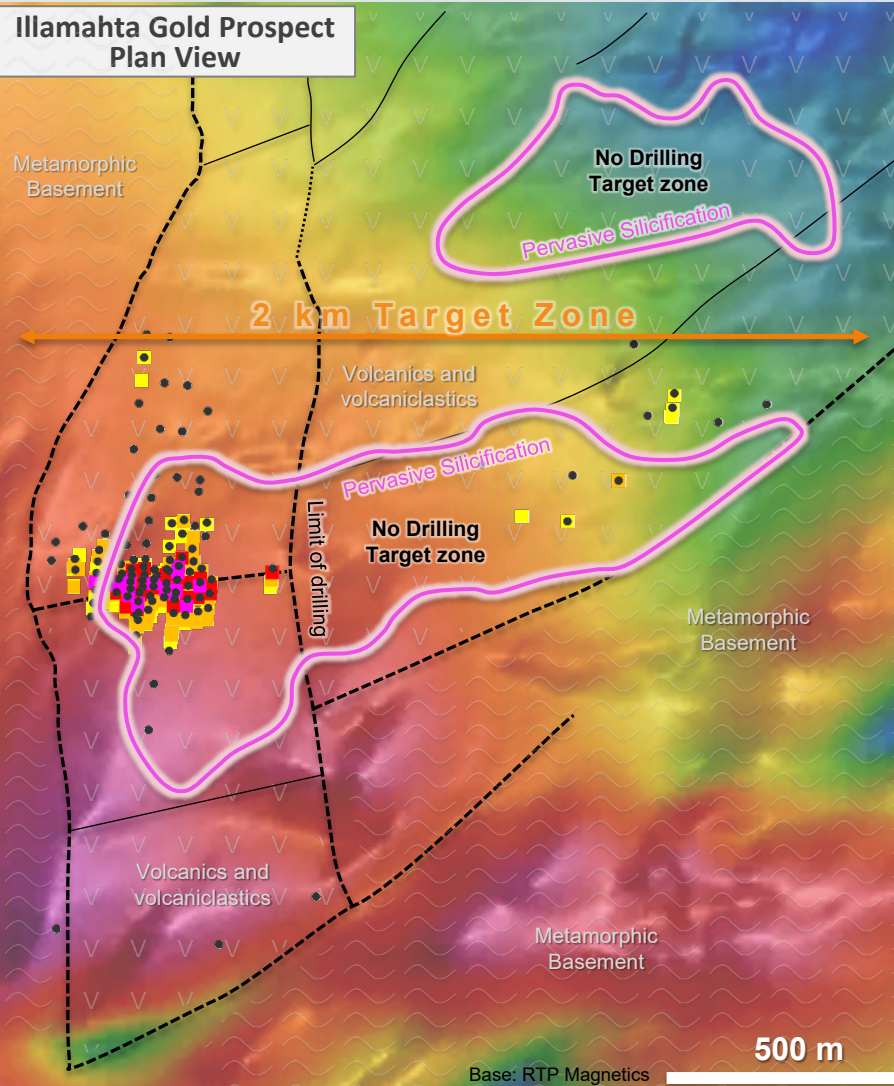
## NEXT STEPS

- Geological mapping and relogging to build 3D structural model
- CSAMT or Deep IP geophysics survey
- Drill testing



# GBM Yandan - Illamahta

## Large scale underexplored epithermal gold system



→ 2.2 Mt @ 0.8 g/t Au (Inf resource) <sup>1</sup>

→ Strong Yandan analogy

→ Attractive very under explored exploration target for bulk mineable and high-grade feeder zone targets

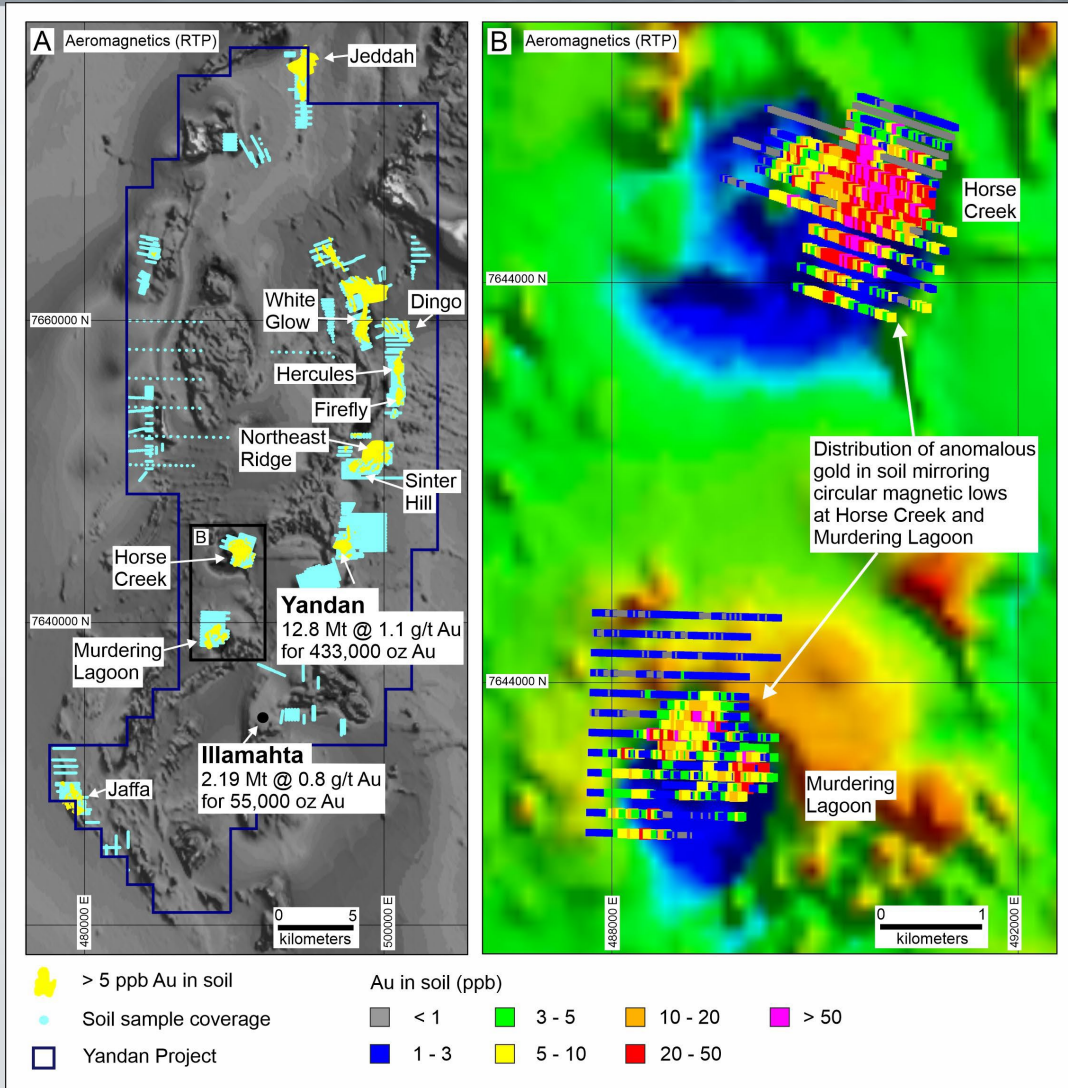
- Illamahta alteration zone 2 km long – Bigger than Yandan with East Hill to Yandan Main 1.2 km long
- Illamahta structural setting and mineralization character strongly analogue to Yandan Main – East hill
- Very limited previous exploration

### NEXT STEPS

- Geological mapping and relogging to build 3D structural model
- CSAMT or Deep IP geophysics survey
- Drill testing

# GBM Yandan West

## Large scale underexplored gold systems



- Maps showing (A) soil anomalies > 5 ppb Au across the Yandan Project overlain on magnetics (RTP). Coverage of soil samples is also shown with just 8% of the project covered by soil sampling. (B) Gold in soil (ppb) overlain on magnetics (RTP) at Horse Creek and Murdering Lagoon.
- Note how well elevated gold matches the circular magnetic features.
- We interpret the circular magnetic features to reflect buried intrusions that could represent intrusion related exemplified to north by deposits such as Mt Leyshon, Kidston, and Mt Wright.

# Recent Progress and News Flow

Key Milestones Ahead - Calendar Years	2Q'23	3Q'23	4Q'23	1Q'24	2Q'24
<b><u>Malmsbury Gold Project - remaining 50% sold (VIC)</u></b>					
Completed sale to Novo Resources Corp	✓				
NVO shares/warrants issued to GBM	✓				Escrow Ends
<b><u>Mount Coolon - JV with Newmont - 100% (QLD)</u></b>					
Newmont Farm-in activities ramp up (up to 75% interest for A\$25m spend, min. 20,000 m of drilling)					
Drilling planned ~10,000 m - GBM team to support				Drilling	
Possible Stage 1 interest earned - 51% Newmont					JV?
<b><u>Twin Hills / Yandan Gold Projects - 100% (QLD)</u></b>					
Complete exploration data review and consolidation of targets with next steps		Underway			
Drilling planned ~3,000 m					Drilling
Evaluate partner options			Progress		
<b><u>Cloncurry Copper/Gold JV - 44% (QLD) Partner funded IOCG exploration leverage</u></b>					
Geophysics and single drill hole to test geology	Completed				
Additional drilling planned - ~2,000 m (~7 km north of Ernest Henry Mine)				Drilling	
<b><u>Mount Morgan Gold/Copper Project - 100% (QLD)</u></b>					
Spin-out underway, GBM to retain equity stake		Underway		Complete	IPO in 2024
<b><u>White Dam Gold/Copper Project - 100% (South Australia)</u></b>					
Producing asset, new alliance with owner of Portia Project		Progressing			
Ramp up production			Mobilise Mining Equip.		
Complete asset sale					Complete



## Contact

**Peter Rohner**

Managing Director  
GBM Resources

+61417780462  
Level 5, Suite 502  
303 Coronation Drive  
Milton QLD 4064

[www.gbmr.com.au](http://www.gbmr.com.au)

**ASX: GBZ**



# Appendix

# A team with a proven track record

## **Peter Rohner, Managing Director**

- Metallurgist (BSc, Grad. Dip Applied Finance) with 35 years' project development and metallurgical plant operations experience
- 14 years in Director / officer roles in public and private resources companies
- Founder and Technical Director; Core Resources: world leader in metallurgical services

## **Tom Cooney, Chief Operating Officer**

- Mining Engineer (BEng, MMgt, GradCert Project Mgt, MAusIMM) with 37 years across the full cycle of project development from early-stage evaluations to implementation
- Recent experience includes successful delivery of whole of life plans for multi-faceted mining projects and technical leadership across an international mining business, with earlier career roles broad ranging and encompassing open pit and underground operational management, business development and environmental management

## **Stephen Nano, Advisor, Technical & Corporate Development**

- Geologist (BSc (Hons), FAusIMM (CP), MAICD 32 years' international experience in exploration and mine geology
- Founder and Technical Director; Global Ore Discovery: internationally recognised geoscience consultancy
- Founder, Vice President, CEO, Director; Mirasol Resources to January 2019 (TSX.V:MRZ)

# Mineral Resource Estimates

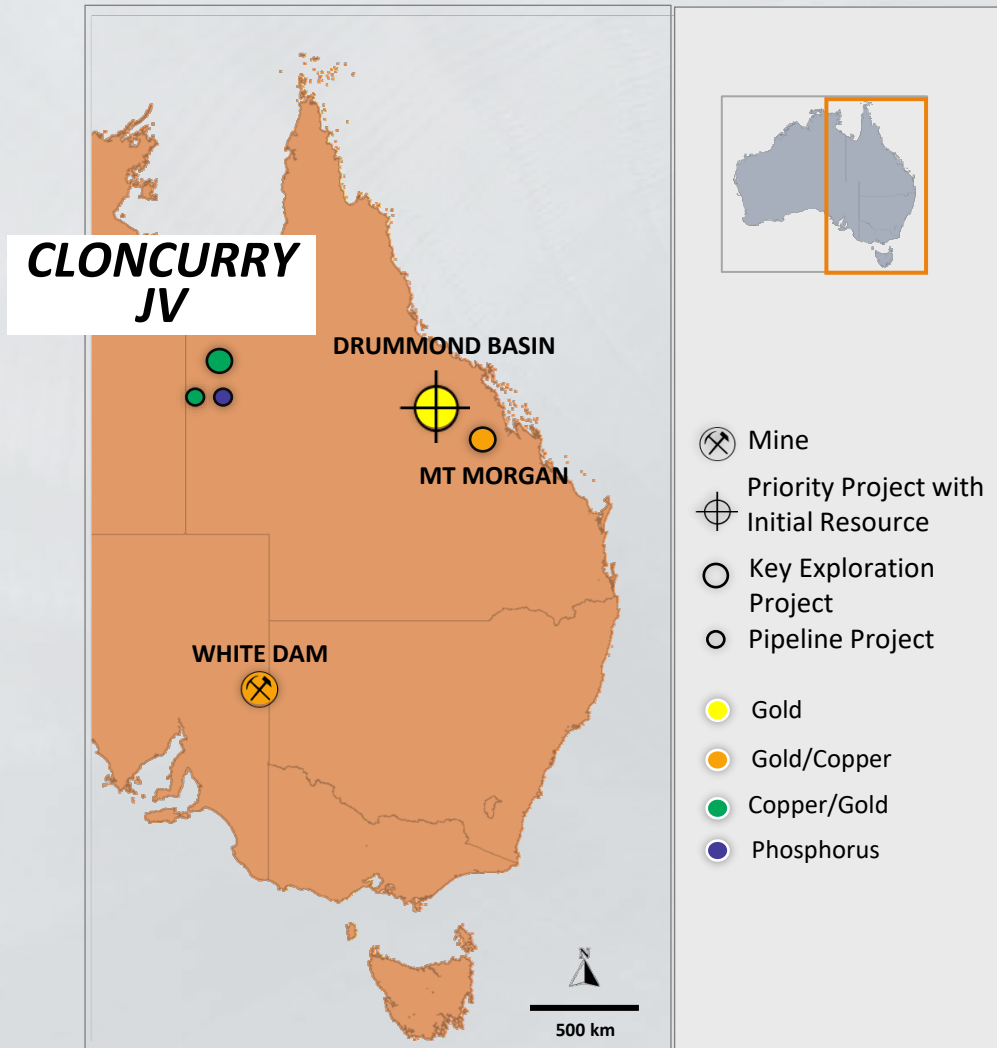
Deposit	Resource Category									Total			Cut-off
	Measured			Indicated			Inferred						
	000' t	Au g/t	Au oz	000' t	Au g/t	Au oz	000' t	Au g/t	Au oz	000' t	Au g/t	Au oz	
Koala - ML													
Open Pit				670	2.6	55,100	440	1.9	26,700	1,120	2.3	81,800	0.4
UG Extension				50	3.2	5,300	260	4	34,400	320	3.9	39,700	2.0
Tailings	114	1.7	6,200	9	1.6	400				124	1.6	6,600	1.0
Sub Total	114	1.7	6,200	729	2.6	60,800	700	2.7	61,100	1,563	2.5	128,100	
Eugenia													
Oxide - Open Pit				885	1.1	32,400	597	1.0	19,300	1,482	1.1	51,700	0.4
Sulphide - Open Pit				905	1.2	33,500	1,042	1.2	38,900	1,947	1.2	72,400	0.4
Sub Total				1,790	1.1	65,900	1,639	1.1	58,200	3,430	1.1	124,100	
Glen Eva - ML													
Sub Total - Open Pit				1,070	1.6	55,200	580	1.2	23,100	1,660	1.5	78,300	0.4
Yandan - ML													
East Hill - Open Pit				4,860	1.5	240,000	7,900	0.8	203,000	12,800	1.1	443,000	0.4
Yandan South - Open Pit							900	0.6	16,000	900	0.6	16,000	0.3
Sub Total				4,860	1.5	240,000	8,800	0.8	219,000	13,700	1.0	459,000	
Illamahta													
Oxide - Open Pit							1,147	0.7	26,900	1,147	0.7	26,900	0.4
Sulphide - Open Pit							1,045	0.9	28,600	1,045	0.9	28,600	0.4
Sub Total							2,192	0.8	55,500	2,192	0.8	55,500	
Twin Hills - ML													
309 - Open Pit	830	2.8	73,900	5,480	1.3	235,200	3,650	1.1	129,800	9,960	1.4	438,900	0.4
309 - UG				190	4.0	24,500	480	3.9	59,900	670	3.9	84,400	2.0
Lone Sister - Open Pit				5,250	1.3	277,300	6,550	0.9	188,500	11,800	1.1	415,800	0.4
Lone Sister - UG				370	2.9	34,300	310	2.6	25,800	680	2.7	60,100	2.0
Sub Total	830	2.8	73,900	11,290	1.4	521,300	10,990	1.1	404,000	23,110	1.3	999,200	
Drummond Basin Total	944	2.6	80,100	19,739	1.5	943,200	24,901	1.0	820,900	45,655	1.26	1,844,200	
White Dam - ML													
Hannaford - Open Pit				700	0.7	16,400	1,000	0.8	26,900	1,700	0.8	43,300	0.2
Vertigo - Open Pit				300	1.0	9,400	1,400	0.6	29,000	1,700	0.7	38,400	0.2
White Dam North - Open Pit				200	0.5	2,800	1,000	0.6	17,600	1,200	0.5	20,400	0.2
Sub Total				1,200	0.7	28,600	3,400	0.7	73,500	4,600	0.7	101,900	
cut-off grade is 0.20 g/t Au for all, Vertigo is restricted to above 150RL (~70 m below surface)													
GBM Total	1,946,100												

The announcements containing the Table 1 Checklists of Assessment and Reporting Criteria relating to the 2012 JORC compliant Resources are:

- Koala/Glen Eva and Eugenia – GBM ASX Announcement, 4 December 2017, Mt Coolon Gold Project Scoping Study, note these resources have not been verified by Newmont and are on tenements subject to a recent farm-in agreement with Newcrest (now Newmont)
  - Yandan – GBM ASX Announcement, 23 December 2020, Mt Coolon and Yandan Combined Resources Total 852,000 oz, following completion of Yandan acquisition, and GBM Announcement, 14 March 2023, Results of Yandan Mineral Resource Update
  - Twin Hills – GBM ASX Announcements, 18 January 2019, Mount Coolon and Twin Hills Combined Resource Base Approaches 1 Million Ounces and 2 February 2022, Significant Resource Upgrade at Twin Hills Project and 5 December 2022, Twin Hills Gold Project Upgrades to ~1 Moz Mineral Resource
  - White Dam - GBM ASX Announcement, 18 August 2020, White Dam Maiden JORC 2012 Resource of 102 koz
- a) The preceding statements of Mineral Resources conforms to the “Australasian Code for Reporting Exploration Results, Mineral Resources and Ore Reserves (JORC Code) 2012 Edition”
  - b) All tonnages are dry metric tonnes
  - c) Data is rounded to ('000 tonnes, 0.0 g/t and '000 ounces). Discrepancies in totals may occur due to rounding
  - d) Resources have been reported as both open pit and underground with varying cut-off based off several factors as discussed in the corresponding Table 1 which can be found with the original ASX announcement for each Resources.



# Other Assets – Cloncurry JV

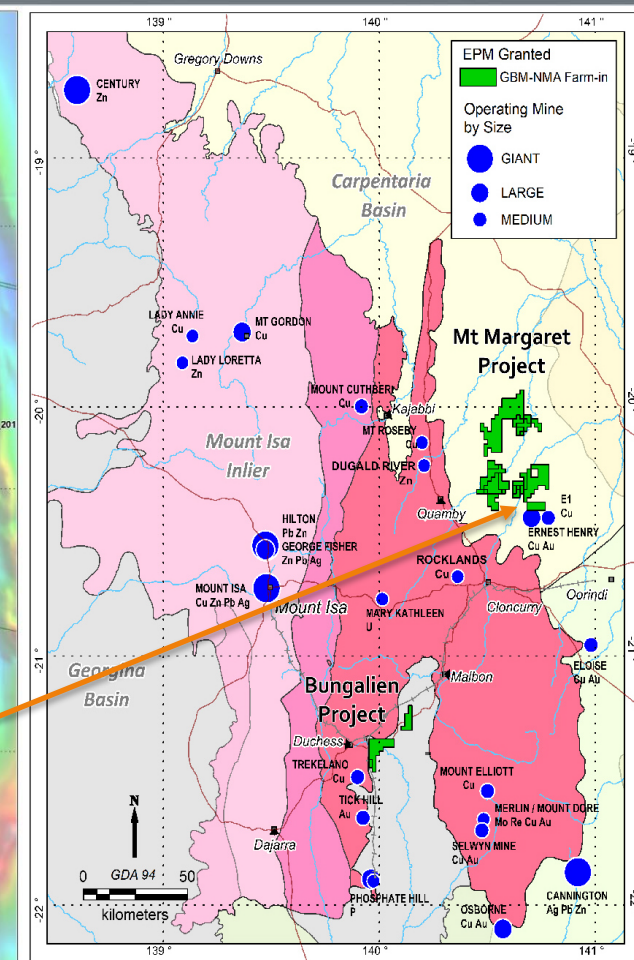
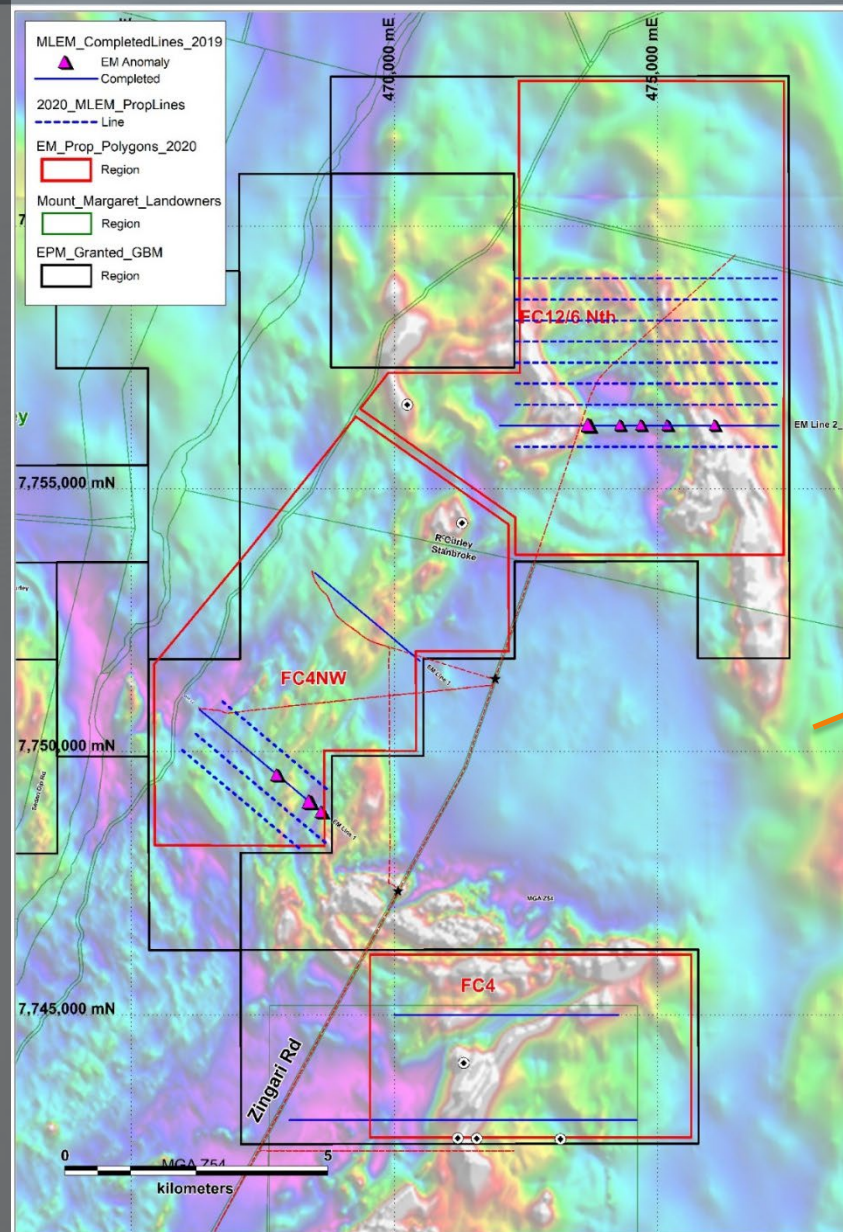


- High potential copper-gold ground in NW Qld mineral province
- JV partner Nippon Mining funding exploration ~\$1.0m in 2023/24.

## Cloncurry JV (44%, with Nippon Mining 56%)

- GBM managing exploration targeting ISCG and IOCG copper and gold, A\$55m Farm-in for 90%, Nippon spend to Sep 23 ~A\$18.3m
- Alongside Evolution's Ernest Henry copper-gold mine
- Exploration Plan – 2023/24
  - Drilled ~500 m hole to test best conductor – **completed**
    - ✓ hole intersected a major new shear zone and broad base metal mineralisation
  - **Drilling plan (~2,000 m) in early 2024, to test targets**

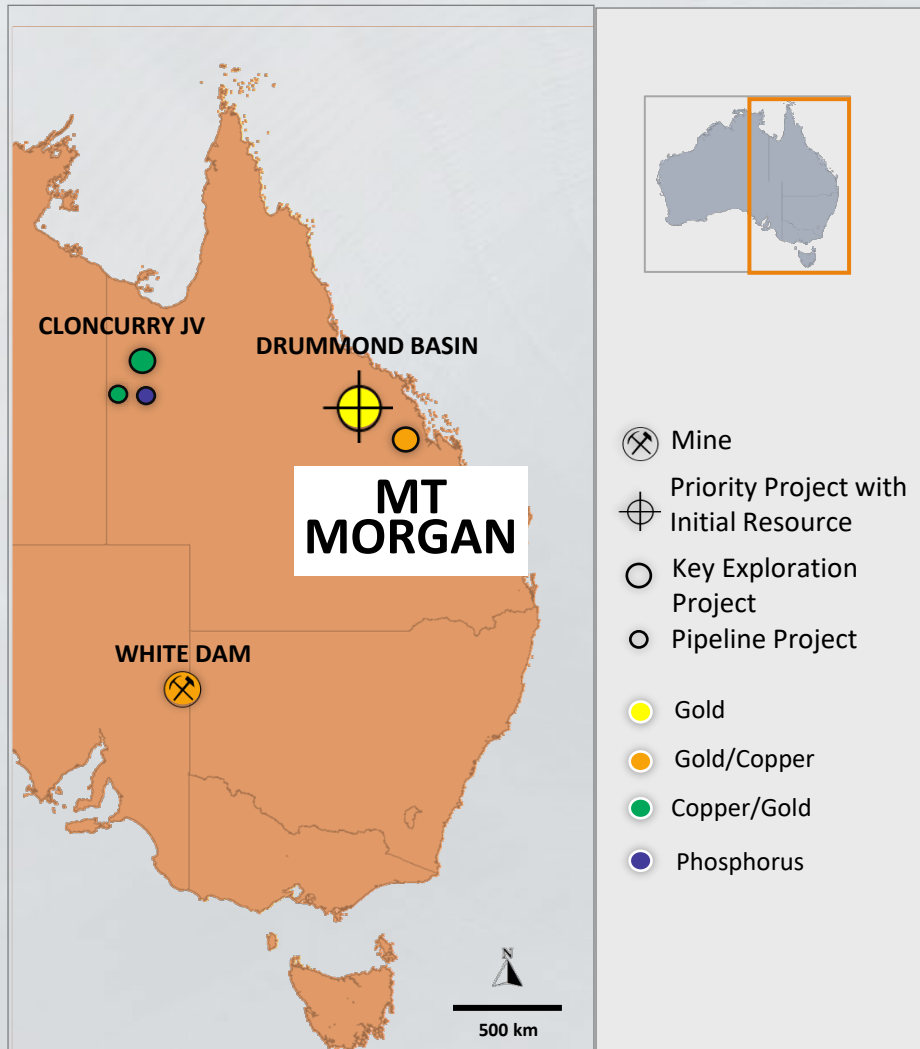
# Cloncurry Copper-Gold JV



**Planned 2023/24  
exploration focus just  
north of Ernest Henry**



# Other Assets – Mt Morgan



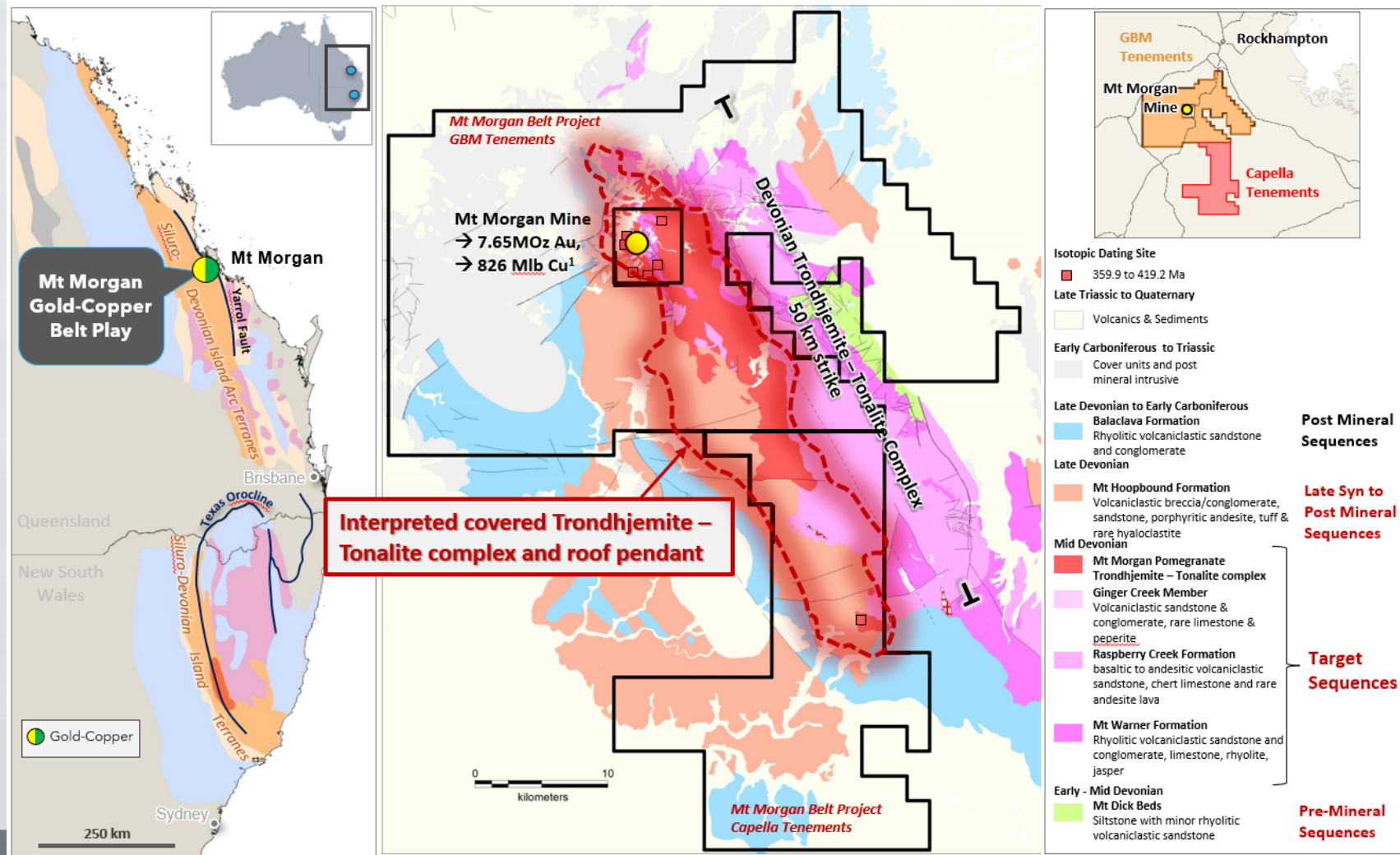
- High potential gold-copper tenements (1,017 km<sup>2</sup>) surrounding the world class historic Mt Morgan mine (7.7 Moz gold and 361 kt copper)
- Vend out being progressed

## **Mount Morgan (100%, deal to vend out in process)**

- Multiple high-priority GBM targets identified for gold and copper mineralisation
- GBM to retain exposure (subject to completion of vend out)

# Mt Morgan – District Scale Gold Copper Exploration Opportunity

## Mt Morgan Belt Gold - Copper Exploration Concept



- Historic Mt Morgan mine (single deposit)
- **50 Mt @ 4.7 g/t Au 0.72% Cu** 7.65 Moz Au and 826 Mlb Cu<sup>1</sup>
- GBM and Capella control 1,390 sq kms surrounding world class Au Cu Mine with 50 km strike length of the outcropping and covered extensions of the Mt Morgan Trondhjemite-Tonalite and prospective roof pendant setting
- No significant exploration since the 1990's
- Massive sulphide character → target for electrical geophysics
- Step change: apply leading edge exploration technology to rapidly screen belt → heliEM + heliFalcon
- New understanding of deposit genesis → exploration focus
- Extensive open file historic data base of geological, geochemical and geophysics datasets

1. Taube, A. 1986. The Mount Morgan gold-copper mine and environment, Queensland: A volcanogenic massive sulfide deposit associated with penecontemporaneous faulting. Econ. Geology 81, pp 1322-1340.



# White Dam Gold-Copper Heap Leach Operation

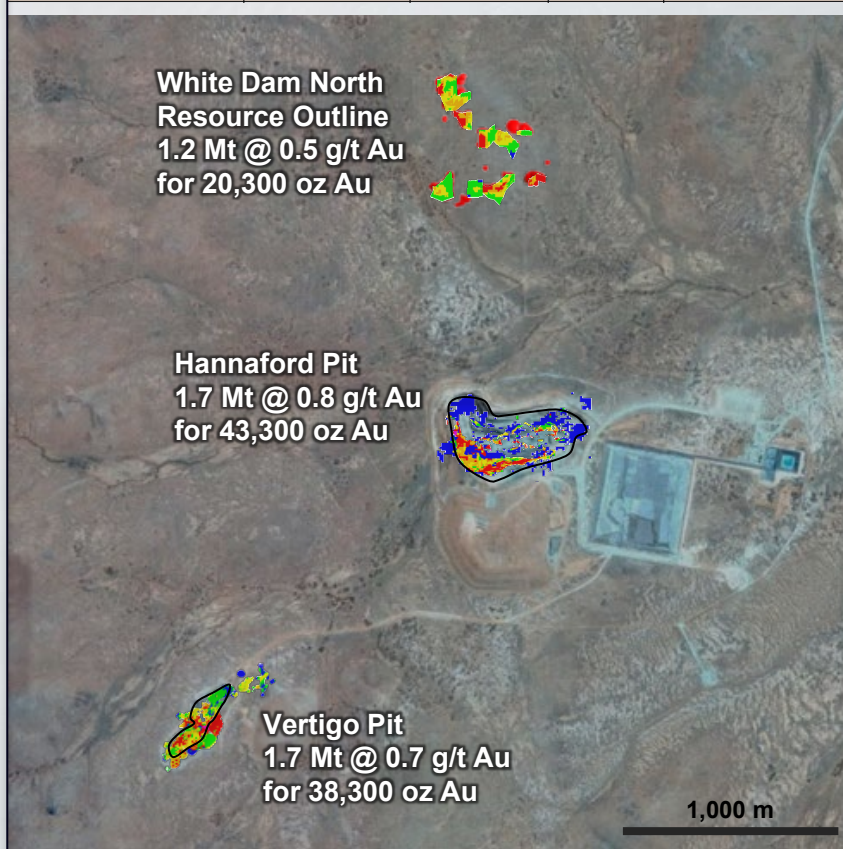




# White Dam Gold-Copper Heap Leach

GBM White Dam Gold Resource – JORC 2012

Area	Resource category	Quantity (tonnes)	Grade Au (g/t)	Contained Gold (ounces)
TOTAL	Measured	0	0.0	0
	Indicated	1,200,000	0.7	28,600
	Inferred	3,400,000	0.7	73,500
	Total	4,600,000	0.7	101,900



- Small producing gold project
- Resources attractive for a new mining campaign
  - ✓ 102 koz gold JORC resource <sup>1</sup>
- Recently announced Alliance with Portia Gold mine
  - Stockpiled ore moved to heap and rehandle heap material to increase gold recovery
  - Initial trial treating Portia high grade tailings at White Dam being advanced

## NEXT STEPS

- Continue to add value to project while project sale is completed

1. GBM ASX Announcement, 10 August 2020, White Dam JORC 2012 Resource of 102 koz, under a JV arrangement and subject to Option to Purchase  
 2. GBM ASX Announcement, 29 August 2023, White Dam Executes Strategic Alliance with Portia Gold Mine