

Oracle Ridge Mineral Resource Update - 3D Investor Presentation

Eagle Mountain Mining Limited (ASX:EM2) (Eagle Mountain, or the Company) is pleased to provide an investor presentation outlining the new Mineral Resource Update for the Oracle Ridge Copper Mine Project in Arizona, USA.

The presentation is available on the Eagle Mountain Mining website: <https://eaglemountain.com.au>

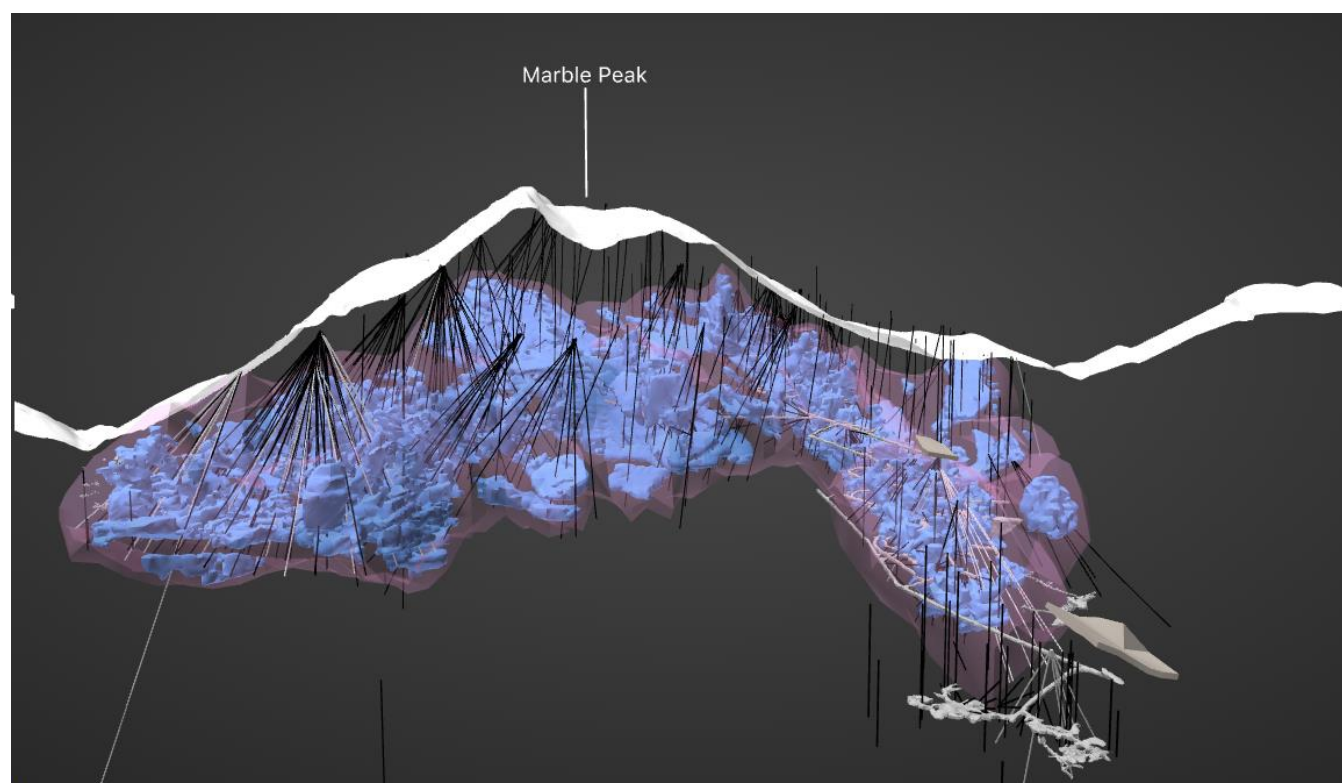


Figure 1 – Image from the 3D interactive model for Oracle Ridge Project showing the new Mineral Resource Estimate and existing infrastructure.

The 3D interactive model includes exploration data, drilling results the new Mineral Resource Estimate (MRE).

Eagle Mountain is currently progressing with various technical evaluations at Oracle Ridge to assess options for future mining and processing operations. A key part of the Company's strategy is to build an environmentally friendly, low emissions copper mine at Oracle Ridge which will drive lower operating and capital costs compared to traditional operations. To support this goal, as part of its technical evaluations, the Company continues to review a range of advanced technologies and processes. Traditional methods have previously proven effective for the project, however, Eagle Mountain sees the opportunity to create shareholder and stakeholder value by investigating new opportunities and technologies.



This ASX announcement was authorised for release by the Board of Eagle Mountain Mining Limited.

For further information please contact:

Tim Mason
Chief Executive Officer
tim@eaglemountain.com.au

Mark Pitts
Company Secretary
mark@eaglemountain.com.au

Jane Morgan
Investor and Media Relations
jm@janemorganmanagement.com.au

COMPETENT PERSON STATEMENT

The information in this document that relates to new Exploration Activities is based on information compiled by Mr Brian Paull, who is a member of The Australasian Institute of Mining and Metallurgy (MAusIMM) and has sufficient experience relevant to the activity which he is undertaking to qualify as a Competent Person as defined in the 2012 Edition of the Australasian Code for Reporting of Exploration Results, Mineral Resources and Ore Reserves (JORC Code 2012). Mr Paull is the Director of Exploration at Eagle Mountain Mining Limited's wholly-owned subsidiary, Silver Mountain Mining Inc, and consents to the inclusion in this document of the information in the form and context in which it appears. Mr Paull holds shares and options in Eagle Mountain Mining Limited.

Where the Company references historic exploration results including technical information from previous ASX announcements including 25 May 2020, JORC Table 1 disclosures are included within them. The Company confirms that it is not aware of any new information or data that materially affects the information included in those announcements, and all material assumptions and technical parameters underpinning the results within those announcements continue to apply and have not materially changed. In addition, the form and context in which the Competent Persons findings are presented have not been materially modified from the original reports.

ABOUT EAGLE MOUNTAIN MINING

Eagle Mountain is a copper-gold explorer focused on the strategic exploration and development of the Oracle Ridge Copper Mine and the highly prospective greenfields Silver Mountain Project, both located in Arizona, USA. Arizona is at the heart of America's mining industry and home to some of the world's largest copper discoveries such as Bagdad, Miami and Resolution, one of the largest undeveloped copper deposits in the world.

Follow the Company's developments through our website and social media channels:



LinkedIn



Twitter



EM2 Website