

# Kula Gold Limited Corporate Presentation

Sydney 11-12 September 2023  
Melbourne 13-14 September 2023

[www.kulagold.com.au](http://www.kulagold.com.au)

# DISCLAIMER, COMPETENT PERSON AND REFERENCES



ASX / **KGD**

## Cautionary Statement:

### Forward Looking Statement:

This Presentation may include statements that could be deemed “forward-looking statements”. Although Kula Gold Limited (the Company) believes the expectations expressed in such forward-looking statements are based on reasonable assumptions, such statements are no guarantee of future performance and actual results or developments may differ materially from those expected in the forward-looking statements or not take place at all.

This Presentation is not, and should not be considered to, constitute any offer to sell, or solicitation of an offer to buy, any securities in the Company, and no part of this Presentation forms the basis of any contract or commitment whatsoever with any person. The Company does not accept any liability to any person in relation to the distribution or possession of this Presentation from or in any jurisdiction.

## Disclaimer

Whilst care has been exercised in preparing and presenting this Presentation, to the maximum extent permitted by law, the Company and its representatives:

- make no representation, warranty or undertaking, express or implied, as to the adequacy, accuracy, completeness or reasonableness of this Presentation;
- accept no responsibility or liability as to the adequacy, accuracy, completeness or reasonableness of this Presentation; and
- accept no responsibility for any errors or omissions from this Presentation.

The Company confirms that it is not aware of any new information or data that materially affects the information included in the original market announcements and that all material assumptions and technical parameters underpinning the estimates in the relevant market announcements continue to apply and have not materially changed. The company confirms that the form and context in which the Competent Person’s findings are presented have not been materially modified from the original market announcements.

## Competent Person Statements

The information in this report that relates to geology and exploration is based on information compiled by Mr. Ric Dawson, a Competent Person who is a member of the Australian Institute of Mining and Metallurgy. Mr. Dawson is a Geology and Exploration Consultant who has been engaged by Kula Gold Limited. Mr. Dawson has sufficient experience, which is relevant to the style of mineralisation, geology and type of deposit under consideration and to the activity being undertaken to qualify as a competent person under the 2012 edition of the Australasian Code for Reporting Exploration Results, Mineral Resources and Ore Reserves (the 2012 JORC Code). Mr. Dawson consents to the inclusion in the report of the matters based on his information in the form and context in which it appears.

## References:

- [Kula Gold ASX release 19 December 2022](#) - Brunswick and Kirup Projects - Lithium Potential
- [Kula Gold ASX release 27 March 2023](#) - Marvel Loch- Airfield Project - Lithium and Tantalum Target
- [Kula Gold ASX release 2 May 2023](#) - Historical BHP Diamond Core Reveals Lithium Potential
- [Kula Gold ASX release 18 May 2023](#) - Lithium & Gold Drilling Commenced - Brunswick
- [Kula Gold ASX release 22 May 2023](#) - Amended - Lithium & Gold Drilling Commenced - Brunswick
- [Kula Gold ASX release 29 May 2023](#) - Two New Lithium Prospects - Kirup Project
- [Kula Gold ASX release 8 June 2023](#) - Lithium Targets Increased Strike - Kirup Project
- [Kula Gold ASX release 15 June 2023](#) - Taliah Lithium Prospect - High Order Drill Targets Defined
- [Kula Gold ASX release 28 June 2023](#) - Rankin Dome JV - Advance To Drill REE Targets
- [Kula Gold ASX release 16 August 2023](#) - Kirup Lithium Targets

# Capital Structure

## Shares on issue:

<b>373,211,921</b>	<b>Fully paid shares (ASX:KGD)</b>
8,350,000	Unlisted options 0.06, expiry 1 July 2026
575,000	Unlisted options 0.085, expiry 1 August 2025
6,000,000	Unlisted options 0.08, expiry 1 November 2025

**Market Capitalisation @ 1.5c/share: ~\$5.6m**

**Cash balance: ~\$0.5m**

**Debt : \$0.0m**

## Major shareholders:

Bowman Gate Pty Ltd	10.2%
JP Morgan Nominees	7.5%
Mark Stowell and Associates	6.7% (Chairman)
John Hannaford and Associates	4.6% (Director)



ASX / **KGD**



# Kula Board and Team



ASX / **KGD**

**Mark Stowell** BBus, CA  
Chairman

The founding Chairman of Mawson West Ltd, a copper producer and explorer which completed an IPO on the Toronto Stock Exchange in one of the largest base metal IPO's of 2011. He was a founder and Non-Executive Director of Incremental Petroleum Limited, and Anvil Mining Ltd. Currently a Director of Southern Hemisphere Ltd and Sentinel Exploration Ltd

**Mark Bojanjac** BCom, CA  
Director

A founding director of Gilt-Edged Mining Limited which discovered one of Australia's highest grade gold mines and managing director of an unlisted public company which successfully developed and financed a 2.4Moz gold resource in Mongolia. He was previously CEO of Adamus Resources Limited. Currently a Director of PolarX Limited and Metallica Minerals Limited

**John Hannaford** BCom, CA, Ffin  
Director

Experienced corporate advisor and company director with broad financial experience from several corporate resource roles. Also a director of ASX listed companies Mt Monger Resources Limited, Forresteria Resources Limited and Voltaic Strategic Resources Limited

**Ric Dawson** B.App.Sc (Geo.) MBA,  
MAusIMM, MAICD  
CEO

Experienced geologist and senior executive manager in multiple ASX entities, founding Managing Director of Prosperity Resources Ltd, inaugural Managing Director of Altech Ltd (formerly AMMG Ltd). Experienced in developing projects from tenement applications to resources, concepts to products.



# Western Australia - World Class Lithium Region



ASX / **KGD**



## Lithium resources ranked by contained Li<sub>2</sub>O (kt)

Resources estimated according to JORC 2012

Project	Status	Owner	Resources (Mt)	Av. grade Li <sub>2</sub> O (%)	Contained Li <sub>2</sub> O (kt)	Resource date
Greenbushes	Operating	Albemarle / Tianqi Lithium / IGO	360.2	1.54	5 554	31/08/2021
Pilgangoora	Operating	Pilbara Minerals	305.0	1.18	3 599	30/06/2022
Wodgina	Operating	Albemarle / Mineral Resources	259.2	1.17	3 032	30/06/2022
Mt Holland	Under development	Sociedad Química Y Minera De Chile S.A. / Wesfarmers	189.0	1.50	2 843	19/03/2018
Kathleen Valley	Under development	Liontown Resources	156.0	1.35	2 100	31/03/2021
Mt Marion	Operating	Ganfeng Lithium Company / Mineral Resources	51.4	1.45	744	30/06/2022
Manna	Exploration	Global Lithium Resources	32.7	1.00	328	15/12/2022
Bald Hill*	Operating	Lithco No. 2 Pty Ltd	26.5	0.97	256	30/04/2018
Marble Bar Lithium Project (MBLP)	Exploration	Global Lithium Resources	18.0	1.00	180	15/12/2022
Mt Cattlin	Operating	Allkem	13.3	1.21	161	25/08/2022
Mt Ida Lithium	Exploration	Red Dirt Metals	12.7	1.15	147	19/10/2022
Buldania	Exploration	Liontown Resources	15.0	0.97	145	08/11/2019
Dome North	Exploration	Essential Metals	11.1	1.15	128	20/12/2022
Niobe	Exploration	Aldoro Resources	4.6	0.07	3	12/10/2022
TOTAL			1454.8		19 220	

Resource estimates have been rounded  
All Mineral Resources are pegmatite-hosted mineralization  
\* Mineral Resource pre-dates production  
Spatial and resource estimates data sourced from  
WA Mines and Mineral Deposit database (MINEDEX)



[Link to the full WA Gov PDF](#)

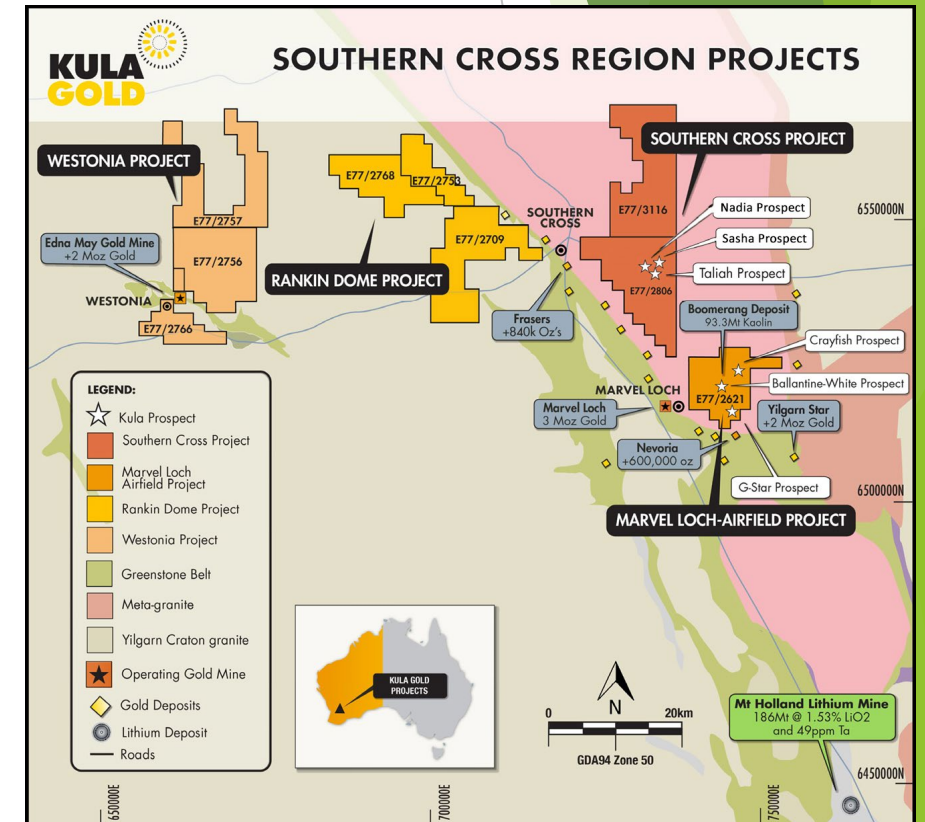
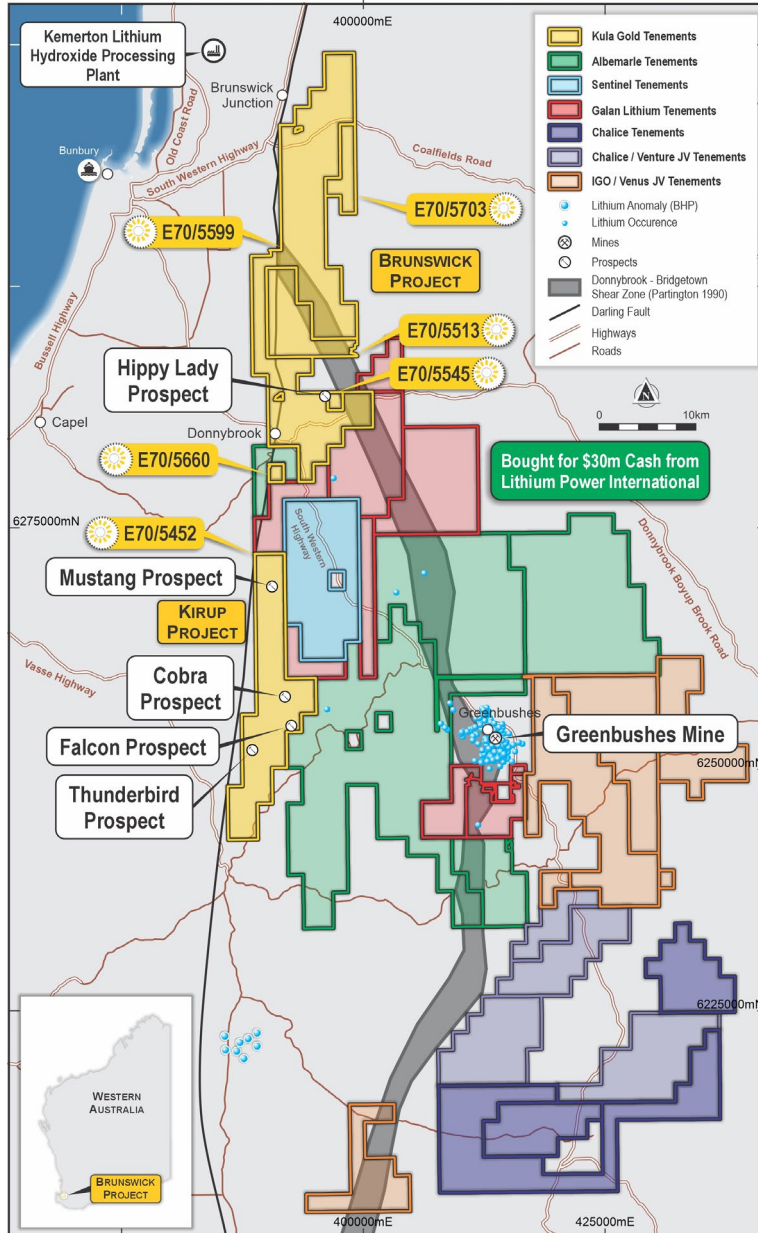
# Projects - LCT Mineralisation Exploration: Focus Areas 2023

## Brunswick and Kirup Projects

1. Mustang Prospect
2. Cobra Prospect
3. Falcon Prospect
4. Hippy Lady Prospect
5. Thunderbird Prospect

## Southern Cross Project

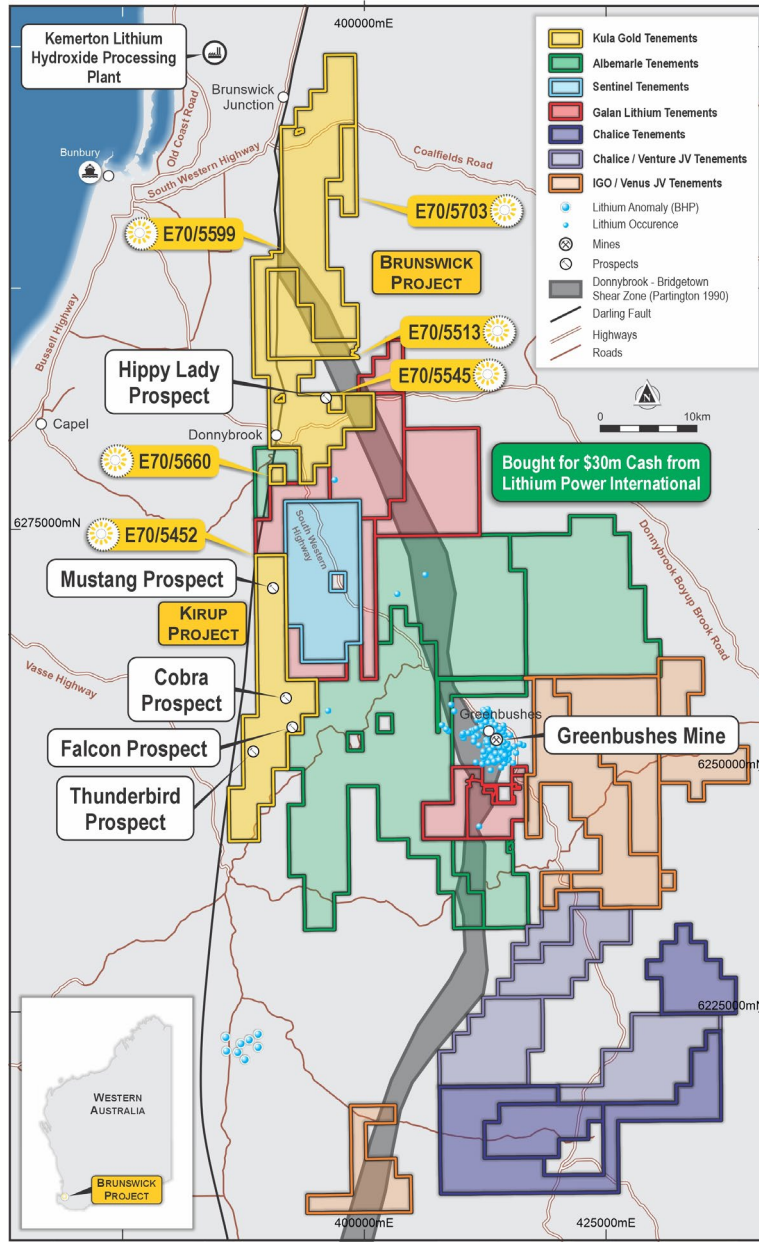
1. Taliah Prospect
2. Sasha Prospect
3. Nadia Prospect



# Projects - LCT Mineralisation Exploration: Focus Areas 2023



ASX / **KGD**



## Kirup Project 70% Kula LCT rights

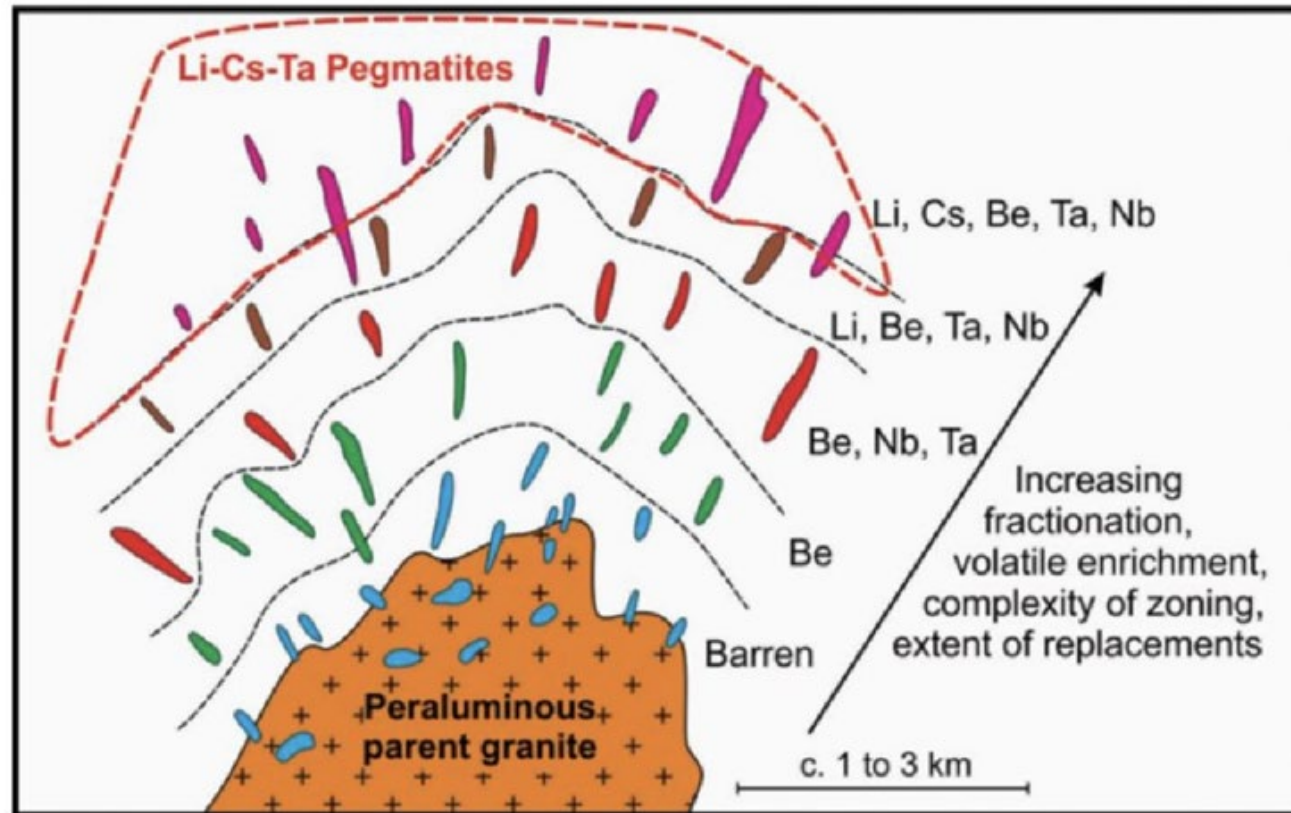
1. Mustang Prospect
2. Cobra Prospect
3. Falcon Prospect
4. Thunderbird Prospect

Near the Greenbushes Mine,  
the world's largest hard rock  
lithium mine



## LCT Fractionation Model

- Mapping of various geochemical Li indicator elements (e.g. Cs, Be, Ta, Sn, Nb) from rock chip and soils to be undertaken along with key ratios (e.g. K/Rb, Nb/Ta, Mg/Li, K/Cs, Zr/Hf)



Source: Adapted after Muller et al., 2017



## Kirup Project

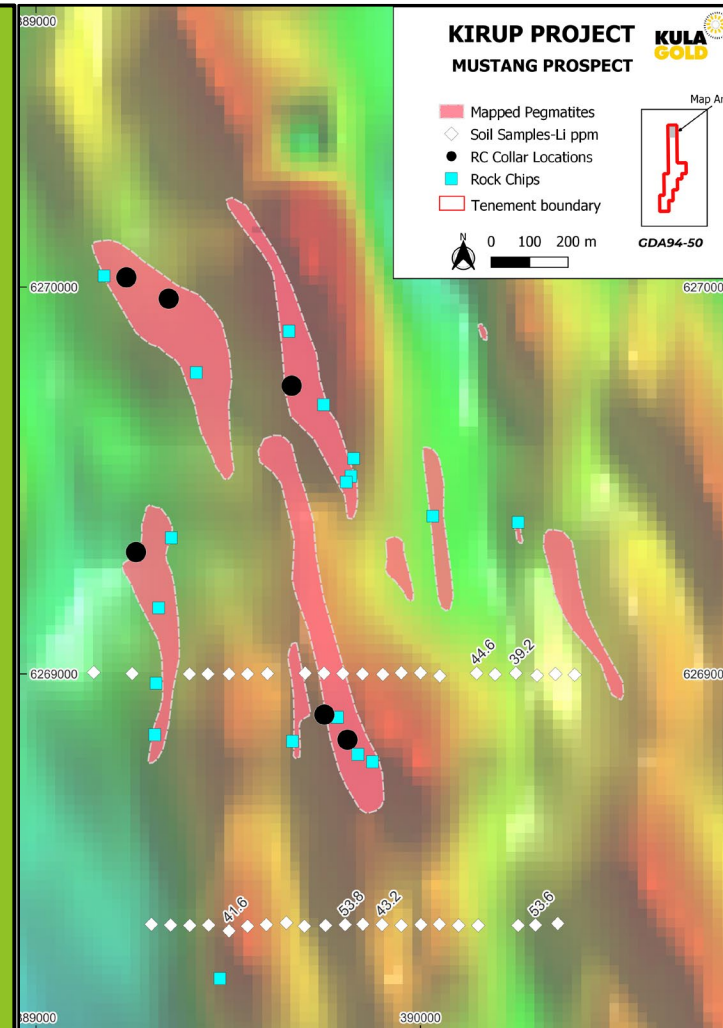
## Mustang Prospect

## LCT Mineralisation

Reconnaissance mapping, rock chipping sampling of pegmatites and soil sampling to date has detected anomalous readings up of **53.8ppm lithium (Li)\*** along a series of magnetic structures of up to 2km long.

The Mustang Prospect in an area of NNW trending magnetic lineaments, comprises a series of NNW striking pegmatitic bodies that occur within intercalated felsic gneiss and amphibolite sequences. Preliminary mapping has identified several pegmatite bodies with probable width increased to approximately up to 200m

\*Due to the outcrops being heavily weathered in this area, surface sample geochemistry is subdued, and lithium is remobilised, as noted at the Greenbushes Mine where heavily weathered rocks and low lithium readings are noted down to 30m-50m



## Kirup Project

### Mustang Prospect

#### Upcoming Proposed Drilling Programme (subject to change)

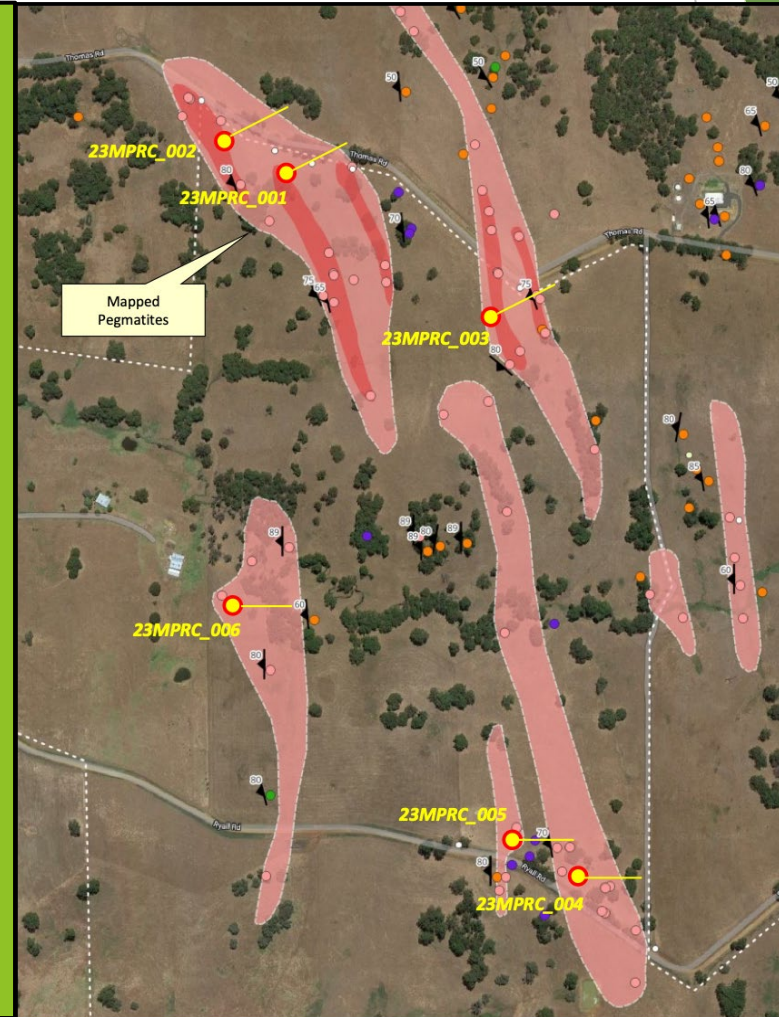
#### Proposed locations of the upcoming ~1200m RC drilling programme

RC drilling programme designed to delineate main pegmatite bodies, and evaluate lithium potential at depth: propose 6 holes drilled to 120-200 m (total x holes ~ 720m - 1200m)

Holes 1-3 planned to be drilled @ 60 degrees > 070 to maximize penetration of pegmatites at depth (pegmatites in area strike ~ 160 and dip steeply W):  
Holes 4-6 drilled @60 deg > 090

#### Aims of programme:

1. Determine lithium content of pegmatites at depth (as surface analysis is low in lithium due to leaching)
2. Delineate pegmatite strike/dip continuity in the subsurface.



# Kirup Project

## Cobra and Falcon Prospects

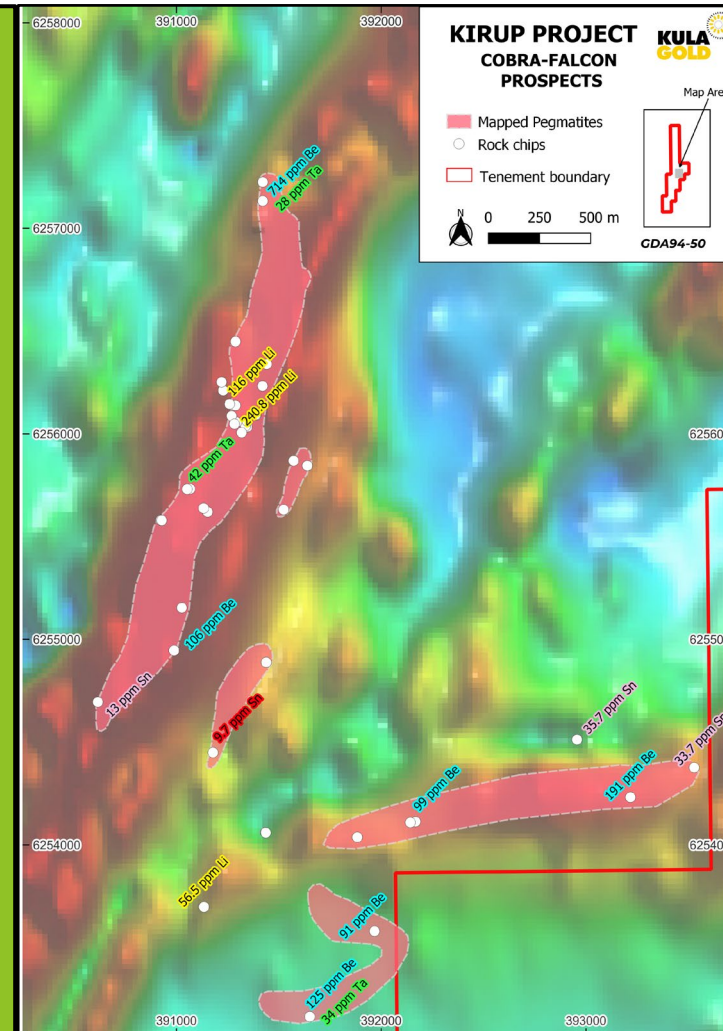
### LCT Mineralisation

Reconnaissance mapping and rock chipping sampling of pegmatites to date has detected anomalous readings up to 240ppm lithium (Li), 41ppm tantalum (Ta), and 714ppm beryllium (Be) along a magnetic structure of up to 3km long and 500m wide.

Cobra Prospect is on a regional NE magnetic lineament.

Pegmatites with high lithium content containing muscovites, tourmalines and garnets (fractionated minerals). Mapping continues to increase the potential dimensions of this prospect.

The mineralogy of pegmatites is composed of predominantly quartz, feldspar, tourmaline, muscovite, garnet, others (to be determined). Generally, poorly foliated and with a grainsize - locally very coarse, up to 10cm crystals of feldspars, and muscovite crystals up to ~5cm





## Kirup Project

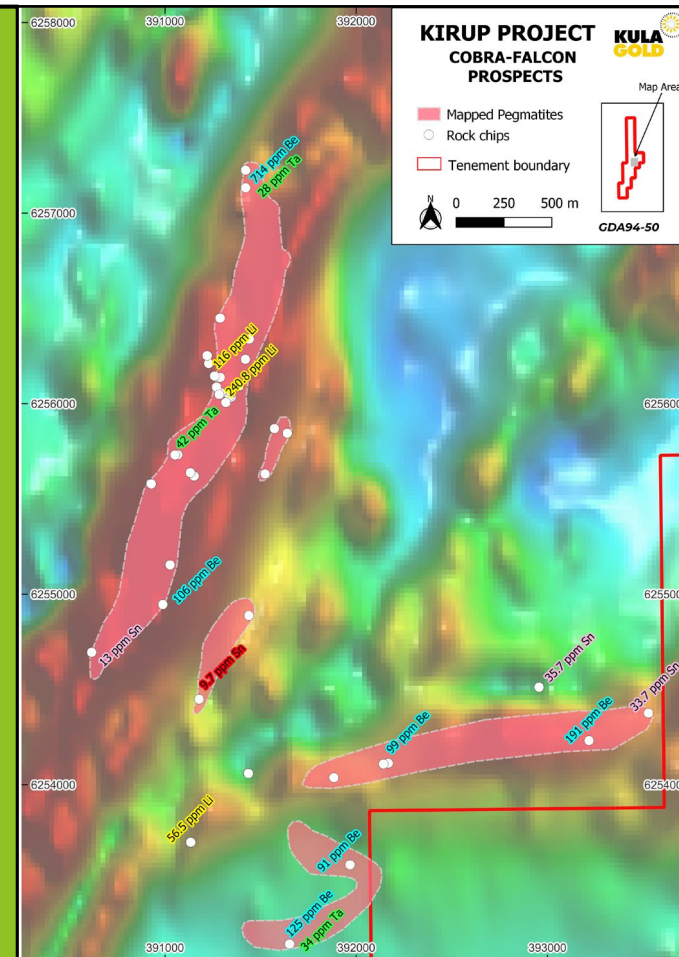
### Falcon Prospect

#### LCT Mineralisation

Reconnaissance mapping and rock chipping sampling of pegmatites to date has detected anomalous readings up to **56ppm lithium (Li)**, **28ppm tantalum (Ta)**, and **191ppm beryllium (Be)** along a magnetic structure of up to 2km long and 300m wide.

The Falcon Prospect, on a different orientation and separate structure to the Cobra Prospect

Kula's exploration team undertook a rock chipping and mapping programme at Falcon Prospect, with significant results being high in beryllium (Be), an excellent LCT mineralisation pathfinder, with significant rock chips having, **191.4ppm**, **99.4ppm**, **124.6ppm** and **90.8ppm Be**.



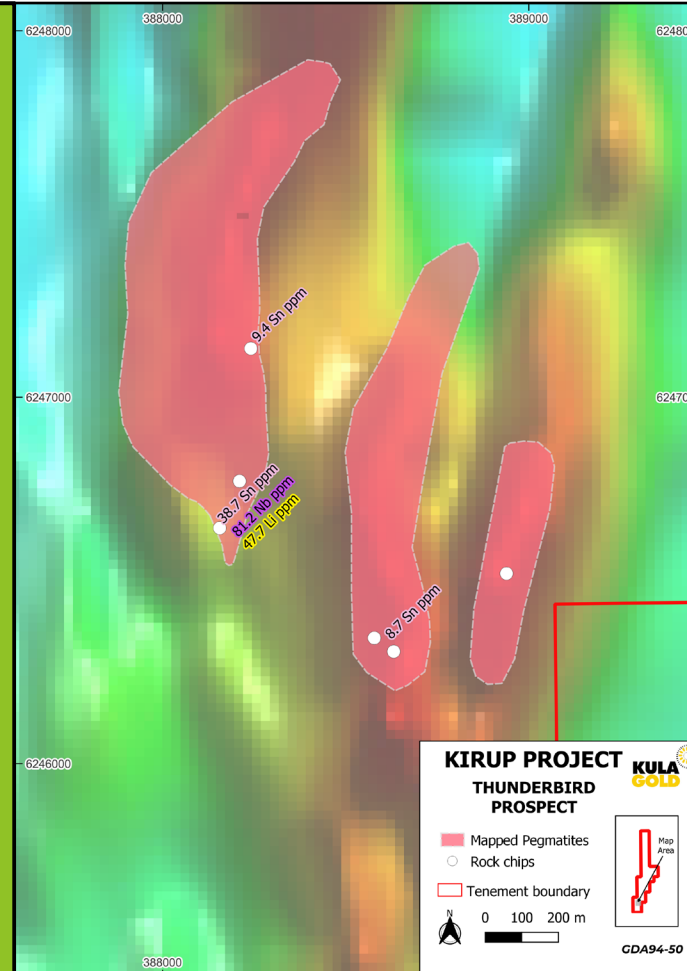


## Kirup Project

### Thunderbird Prospect

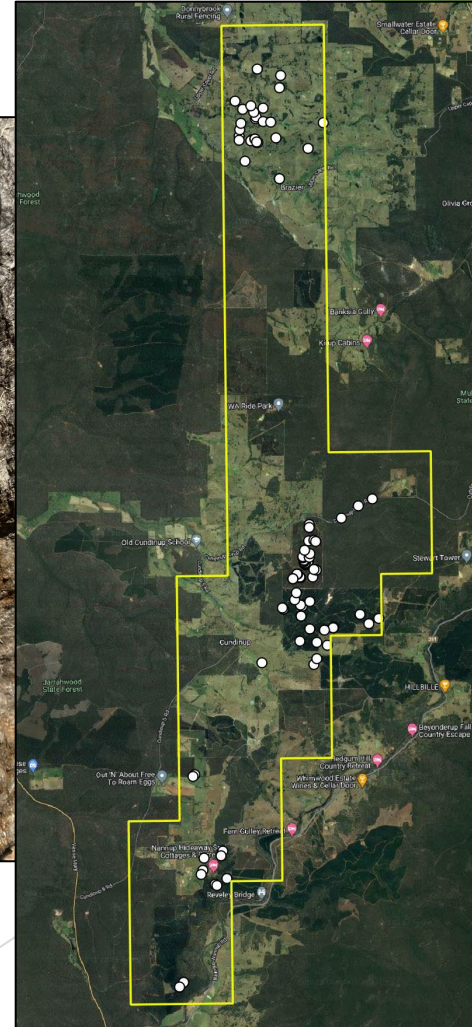
#### LCT Mineralisation

Reconnaissance mapping and rock chipping sampling of pegmatites to date has detected anomalous pathfinder element readings up to **81.2ppm niobium (Nb)**, **38ppm tin (Sn)**, along a magnetic structure of up to 1km long and 200m wide.



## Kirup Lithium Ongoing Exploration:

- Ongoing mapping and rock chipping of target areas within the Kirup Project area, with higher amounts of tourmalines, micas and garnets
- Scheduled preparation work for December Quarter RC drilling of Cobra and Falcon Prospects
- More infill mapping and rock chipping of Thunderbird Prospect





Southern Cross Project 100%

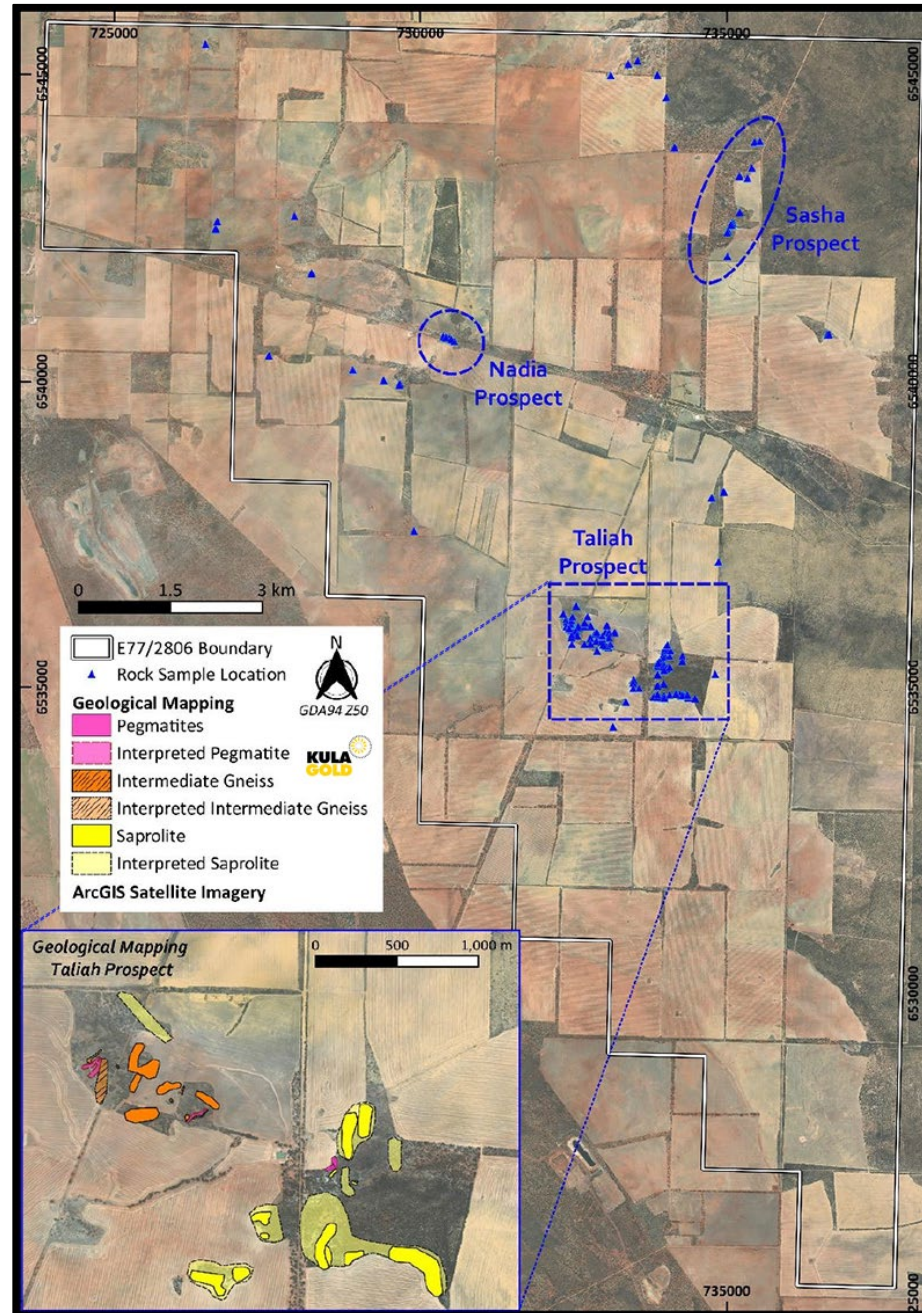
Taliah Prospect

Sasha Prospect

Nadia Prospect

LCT Mineralisation

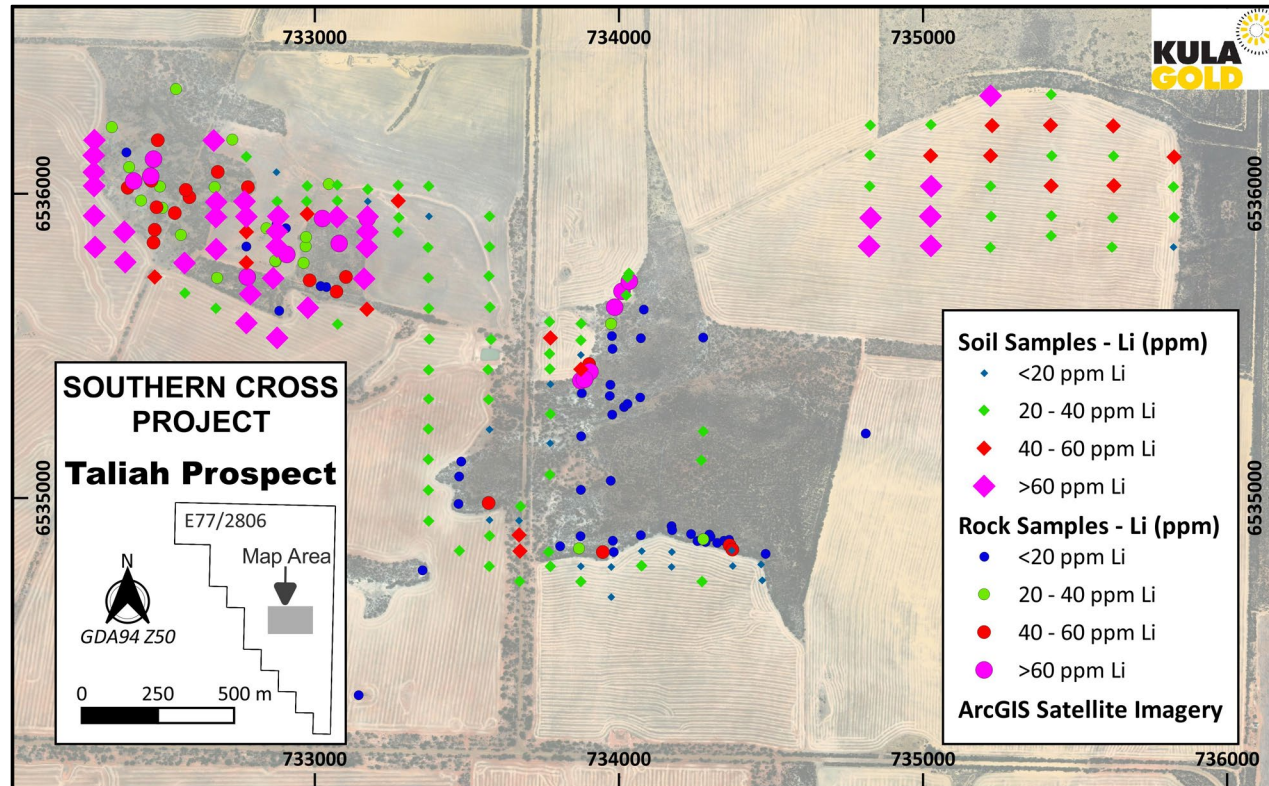
90km from the Mount  
Holland hard rock  
lithium mine



# Southern Cross Project

## Taliah Prospect

### LCT Mineralisation



Reconnaissance mapping and rock chipping sampling to date has detected anomalous readings up to 214ppm lithium (Li), 144ppm tantalum (Ta), and 300ppm beryllium (Be) along a magnetic structure of up to 4km.



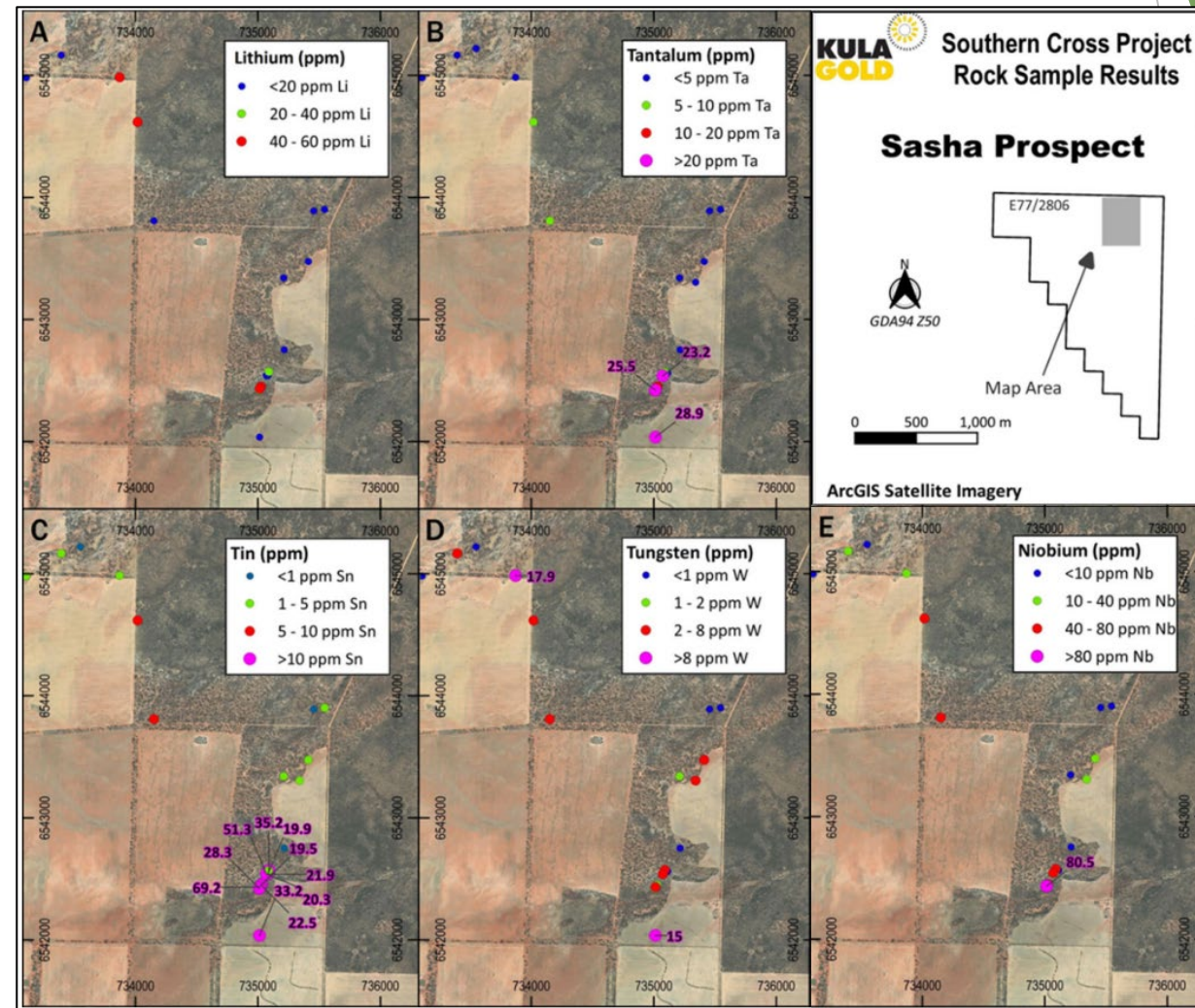
# Southern Cross Project

## Sasha Prospect

### LCT Mineralisation

Reconnaissance mapping and rock chipping sampling to date has detected anomalous readings up to 58ppm lithium, 28ppm tantalum and 18ppm beryllium.

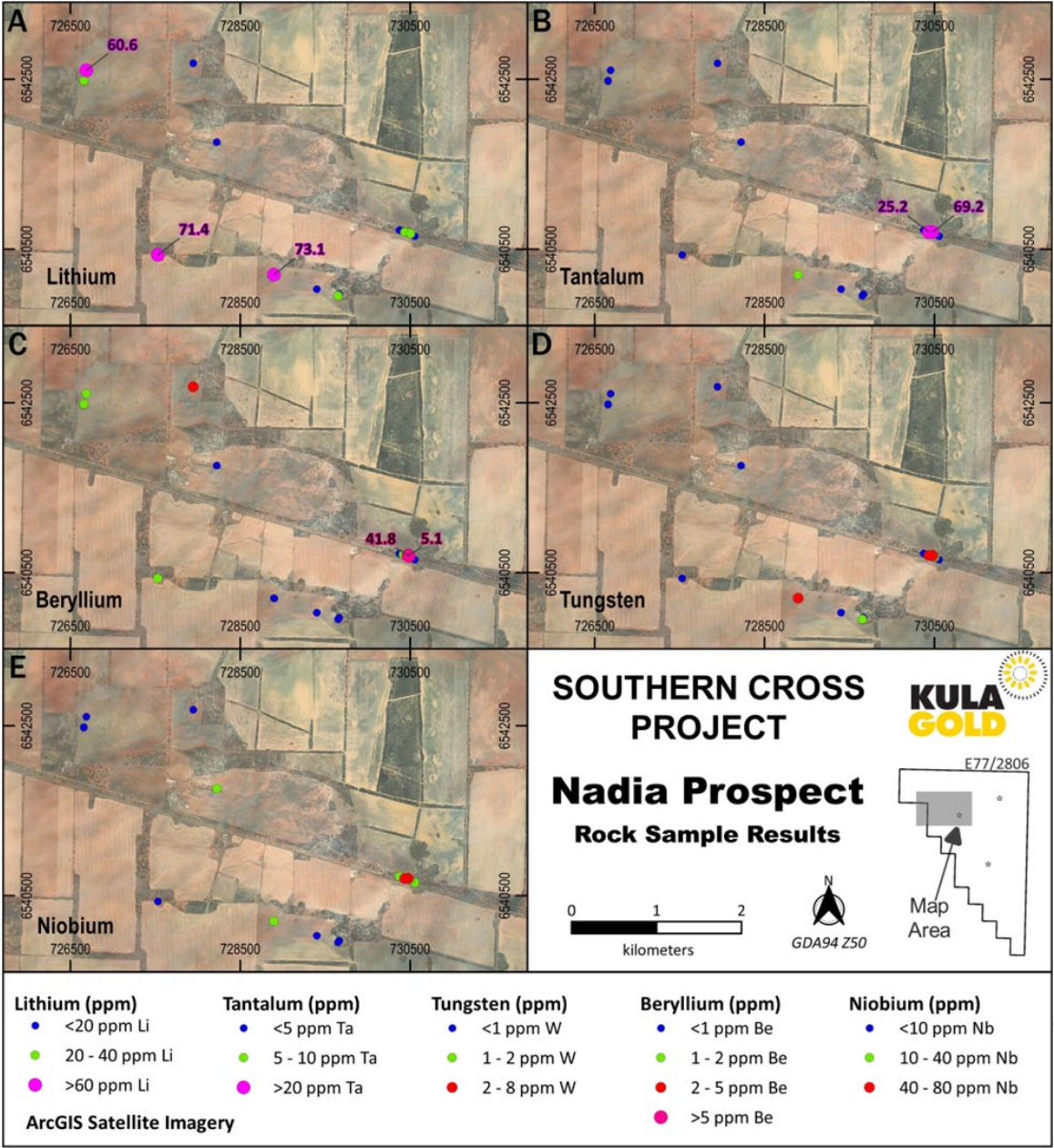
Outcropping over 1.8km<sup>2</sup>



Southern Cross Project  
Nadia Prospect  
LCT Mineralisation

Reconnaissance  
mapping and rock  
chipping sampling  
to date has  
detected  
anomalous  
readings of up to  
36ppm lithium,  
119ppm tantalum  
and 41ppm  
beryllium

Outcropping  
600m x 100m



ASX / **KGD**



## Southern Cross Project

### LCT Mineralisation

Pegmatite  
Rocks  
RK000098 &  
RK000232

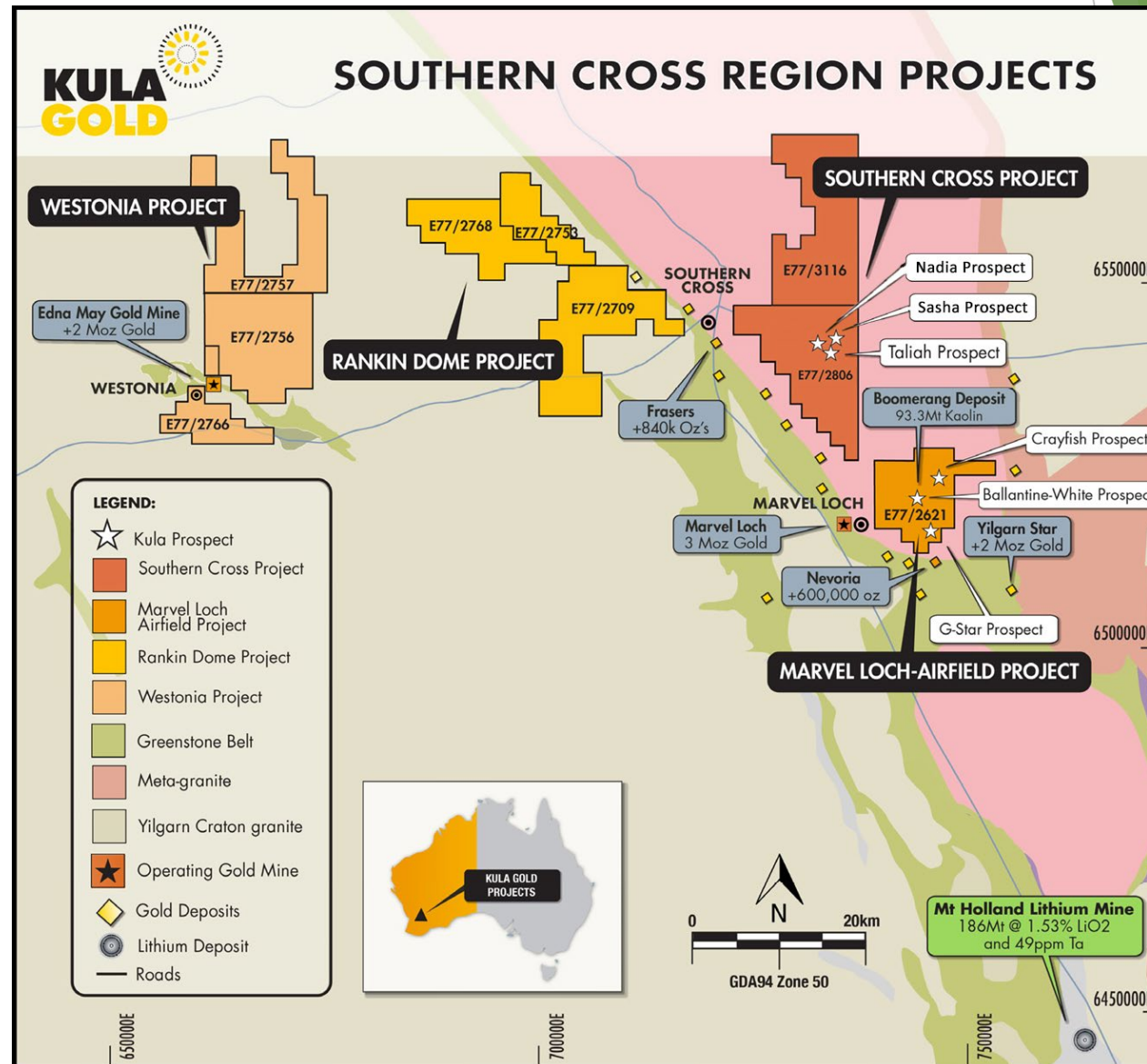


## Rankin Dome Project

100%, ASX:ACM earning 51%

REE / LCT Mineralisation

120km from the Mount  
Holland hard rock  
lithium mine





## Rankin Dome Project

100%, ASX: ACM earning 51%

Rare Earth Elements Mineralisation

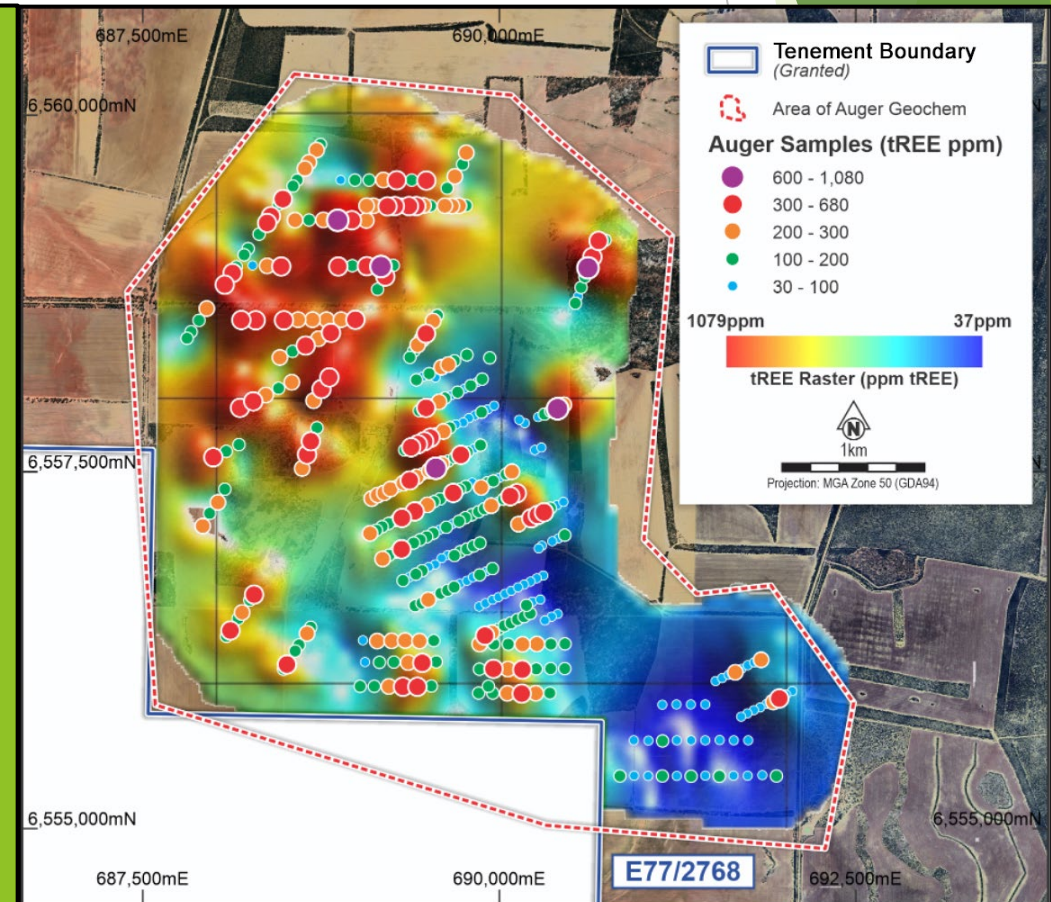


ASX / KGD

The Rankin Dome Project, prospective for REE, is in the Youami Terrane near Southern Cross, an established mining centre.

ACM has completed a positive review of an upcoming drill program planned at Rankin Dome and has undertaken landowner engagement. The planned drilling programs will incorporate Reverse Circulation (RC), aircore and auger drilling to best suit the geomorphology of the various anomalous areas within the large Rankin Dome Project is scheduled in the upcoming Quarter.

- 74% of samples above 115ppm TREE with a high of 1,080ppm



Thank you for your  
attendance

[www.kulagold.com.au](http://www.kulagold.com.au)