



Charging Forward: Lithium Exploration in Canada and Critical Minerals Exploration in Australia

I n v e s t o r P r e s e n t a t i o n | O c t o b e r 2 0 2 3

ASX:NYM
narryer.com.au

Important Notice & Disclaimer

This presentation has been prepared by Narryer Metals Limited (**Narryer** or the **Company**) for sophisticated and professional investors. This document contains background information about Narryer current as at the date of this presentation. The presentation is in summary form and does not purport to be all inclusive or complete. Recipients should conduct their own investigations and perform their own analysis in order to satisfy themselves as to the accuracy and completeness of the information, statements and opinions contained in this presentation.

This presentation is for information purposes only. Neither this presentation nor the information in it constitutes an offer, invitation, solicitation or recommendation in relation to the purchase or sale of shares in any jurisdiction. This presentation may not be distributed in any jurisdiction, except in accordance with the legal requirements applicable in such jurisdictions. Recipients should inform themselves of the restrictions that apply in their own jurisdiction. A failure to do so may result in a violation of securities law in such a jurisdiction.

This presentation does not constitute investment advice and has been prepared without taking into account the recipients' investment objectives, financial circumstances or particular needs and the opinions and recommendations in this presentation are not intended to represent recommendations of particular investments to particular persons. Recipients should seek professional advice when deciding if an investment is appropriate. All securities transactions involve risks, which include (among others) the risk of adverse or unanticipated market, financial or political developments.

To the fullest extent permitted by law, Narryer and its officers, employees, agents and advisers do not make any presentation or warranty, express or implied, as to the currency, accuracy, reliability or completeness of any information, statements, opinions, estimates, forecasts or other representations contained in this presentation. No responsibility for any errors or omissions from this presentation arising out of negligence or otherwise is accepted.

This presentation may include forward looking statements, Forward looking statements are only predictions and are subject to risks, uncertainties and assumptions which are outside the control of Narryer. Actual values, results or events may be materially different to those expressed or implied in this presentation. Given these uncertainties, recipients are cautioned not to place reliance on forward looking statements. Any forward looking statements in this presentation speak only at the date of issue of this presentation. Subject to any continuing obligations under any applicable law, Narryer does not undertake any obligation to update or revise any information or any of the forward looking statements in this presentation of any changes in events, conditions or circumstances on which any such forward looking statements is based.

Competent Person Statement

The information in this announcement that relates to Exploration Results is based on information compiled by Dr Gavin England, a Competent Person who is a member of the Australian Institute of Mining and Metallurgy and the Australian Institute of Geosciences. Dr England is the Managing Director of Narryer Minerals Limited. Dr England declares in accordance with the transparency principles of the JORC Code that he has a personal financial interest in Narryer Mineral Limited. Dr England has sufficient experience that is relevant to the style of mineralisation and type of deposit under consideration and to the activity undertaken to qualify as a Competent Person as defined in the 2012 Edition of the Australian Code for Reporting of Exploration Results, Mineral Resources and Ore Reserves. Dr England has consented to the inclusion in this Public Report of the matters based on his information in the form and context in which it appears.

Narryer has acquired 100% of 5 lithium projects in Canada

5 Projects covering 124 km² located in the prospective James Bay, Abitibi and NW Ontario regions:

- 01 **Pontax East, James Bay** – neighbouring **Patriot Battery Metals** (ASX: PMT & TSX-V: PMET Mkt Cap C\$1.7B), **Cygnus Metals** (ASX: CY5, Mkt Cap A\$42m), **Li-FT Power** (CSE: LIFT, Mkt Cap C\$330m)
- 02 **Le Moyne, James Bay** - 20km from **Winsome Resources' Cancet Project** (ASX: WR1, Mkt Cap A\$234m) and 80 km from **Patriot Battery Metals Corvette Li Deposit**
- 03 **Walrus Island, James Bay** – 100km from **Q2 Metals** (TSX-V: QTWO, Mkt Cap C\$63m)
- 04 **Eades, Ontario** - 15km from the Case Lake Cs-Li Project of **Power Metals Corp** (TSX-V: PWM, Mkt Cap C\$44m).
- 05 **Hailstone, Ontario** - 40km from **Green Technology Metals Root Li Deposit** (ASX: GT1, Mkt Cap A\$130m)

Managing Director, Gavin England currently at site in Ontario, with plans for James Bay project exploration on ground in coming weeks – working with CSA / ERM in Canada

Early-stage exploration with evidence of outcropping pegmatites in proximity to known lithium mineralisation



Why Canadian Lithium?

Right Commodity

Global demand for lithium batteries is expected to surge more than five-fold by 2030¹

New Portfolio acquisition provides lithium exposure for NYM and compliments other critical minerals (REE, Ni-Cu-PGE) currently in Australian portfolio

Recent listings include ASX: JBY and ASX: PLN²

Right Locality

Lithium required to supply the nearby explosion of battery gigafactories planned and in operation for North America for coming years.

Canada supportive in creating Critical Minerals Strategy. Government committing ~ \$4 billion in FY22 budget to become a major global supplier³.

US Government supportive in intensifying local production, and see lack of Li supply a serious threat to national and economic security

Canada is politically stable and has strong ESG practices

Right Geology

The Superior Province Canada was historically underexplored for Li pegmatite mineralisation, but now becoming a Tier 1 jurisdiction

NYM mineral claims positioned in already active exploration and development regions. Neighbours having exploration success



Gigafactory data source - CIC Energigune, 2023

¹ Building a Robust and Resilient US Lithium Battery Supply Chain. Feb 2023 Report. Li Bridge;

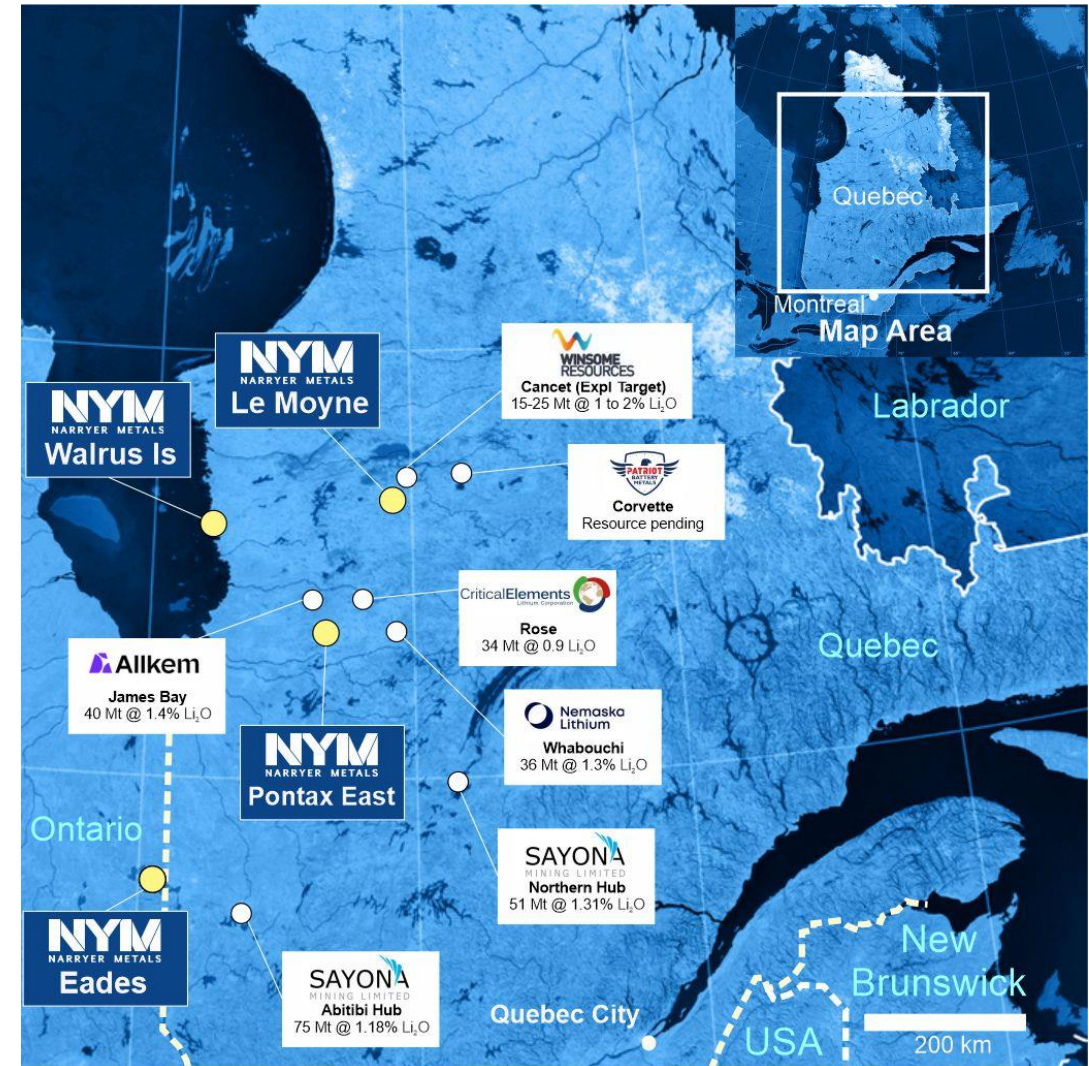
² James Bay Minerals (ASX: JBY) admission ASX Announcement 11 September 2023; Pioneer Lithium Limited (ASX: PLN) admission ASX Announcement 28 September 2023;

³ Government of Canada Report. The Canadian Critical Minerals Strategy. From Exploration to Recycling: Powering the Green and Digital Economy for Canada and the World Dec 2022.

Quebec Lithium (and Eastern Ontario)

- ▶ NYM exploration focus is James Bay and Abitibi Regions of Quebec. Most in-demand Li exploration jurisdiction in North America
- ▶ James Bay region heading to tier 1 Li Pegmatite province with advanced large-scale projects -
 - ▶ Corvette – Resource Pending (ASX: PMT & TSX-V: PMET, Mkt Cap C \$1.7B)
 - ▶ James Bay – 40Mt @ 1.4% Li₂O¹ (ASX: AKE Mkt Cap; A\$7.4B)
 - ▶ Whabouchi – 36Mt @ 1.3 % Li₂O² (Nemaska Lithium, Pallinghurst Group)
 - ▶ Rose – 34Mt @ 0.9% Li₂O³ (TSX-V: CRE, Mkt Cap C\$359m)
- ▶ Rio Tinto identifies significance of James Bay Region, executing C\$65.5 million option agreement for Li exploration tenure with Midland Exploration⁴ (TSX-V: MD, Mkt Cap C\$40m)
- ▶ Abitibi region (south of James Bay) contains Sayona (ASX:SYA) NAL, Authier and Tansim Projects combining to 75Mt @ 1.18% Li₂O⁵. Production now underway

NYM has 4 projects located in the two regions, proximal to existing Li projects. Neighbours having exploration success identifying LCT pegmatites



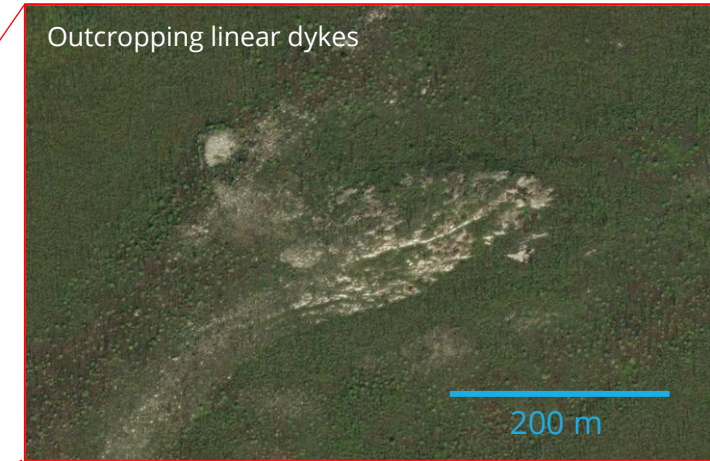
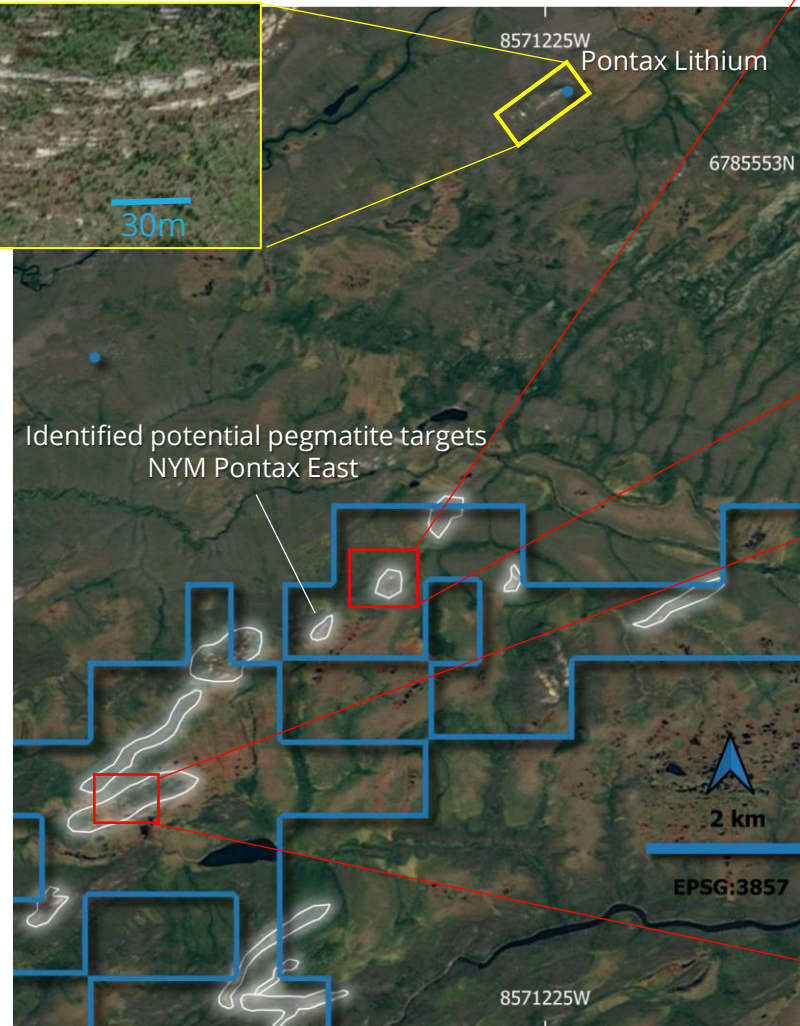
THE PROXIMITY OF THE PROJECT TO THE OTHER PROJECTS REFERRED TO ABOVE DOES NOT INFER THAT THE COMPANY WILL BE ABLE TO ACHIEVE SIMILAR EXPLORATION OR MINING SUCCESS.

¹Allkem ASX announce 21 December 2021; ²Nemaska Lithium TSE announcement 19 August 2019; ³Critical Element Lithium TSX-V announcement July 2022; ⁴Midland Exploration TSX-V announcement 14 June 2023; ⁵Sayona Mining ASX announcement 4 July 2023

Pontax East

James Bay Regional Setting

Discovery outcropping pegmatite at Pontax Deposit (Cygnus Metals)

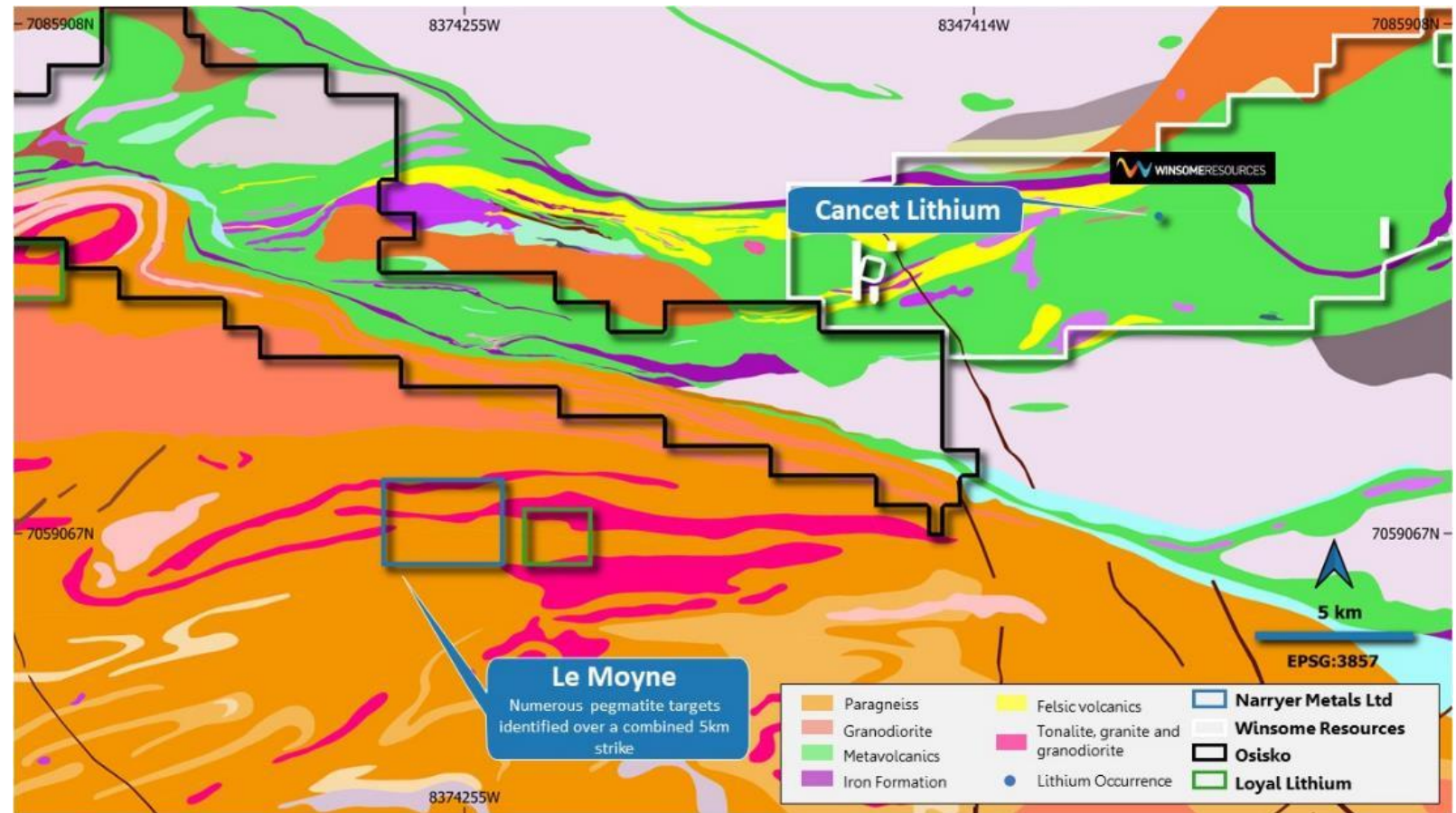


- Satellite imagery shows intrusive targets
- MD in Canada now, and to follow up with fieldwork at Pontax East in coming fortnight

Le Moyne

James Bay Regional Setting

- ▶ 10km² exploration project ~ 150km ESE from Radisson
- ▶ 5km strike of two distinct 500m wide dyke swarms intruding the Laguiche Complex, Opinaca Subprovince, near major geological terrane boundary¹
- ▶ Little previous exploration of this area
- ▶ Located 20km W of Winsome Resources' Cancet Project² (Exploration Target of 15-25 Mt @ 1 to 2 % Li₂O; ASX: WR1, Mkt Cap A\$234m) and 80 km W from Patriot Battery Metals' Corvette Li Deposit (ASX: PTM, & TSX-V: PMET Mkt Cap C\$1.7B)
- ▶ Other surrounding Li explorers include Brunswick Exploration Plex Li Project³ (TSX-V: BRW.V, Mkt Cap C\$162m) and Loyal Lithium Brisk Li Project⁴ (ASX: LLI, Mkt Cap A\$56m)



Co-ords – UTM-WGS84 zone 18

¹ MOUKSIL, A. -LEGAULT, M. -DOILY, M. -DOYON, J. -SAWYER, E. DAVIS, D.W., 2003. Synthèse géologique et métallogénique de la ceinture de roches vertes de la Moyenne et de la Basse-Eastmain (Baie-James). Ministère des Ressources naturelles, de la Faune et des Pêches, Québec; ET 2002-06, 55 pages, 1 plan; ²ASX:MTC Announcement 9 November 2017. "Significant Exploration Target at Cancet Lithium"; ³ Brunswick Exploration TSX-V announcement 5 December 2022; ⁴ Loyal Lithium ASX announcement 3 October 2022

Walrus Island

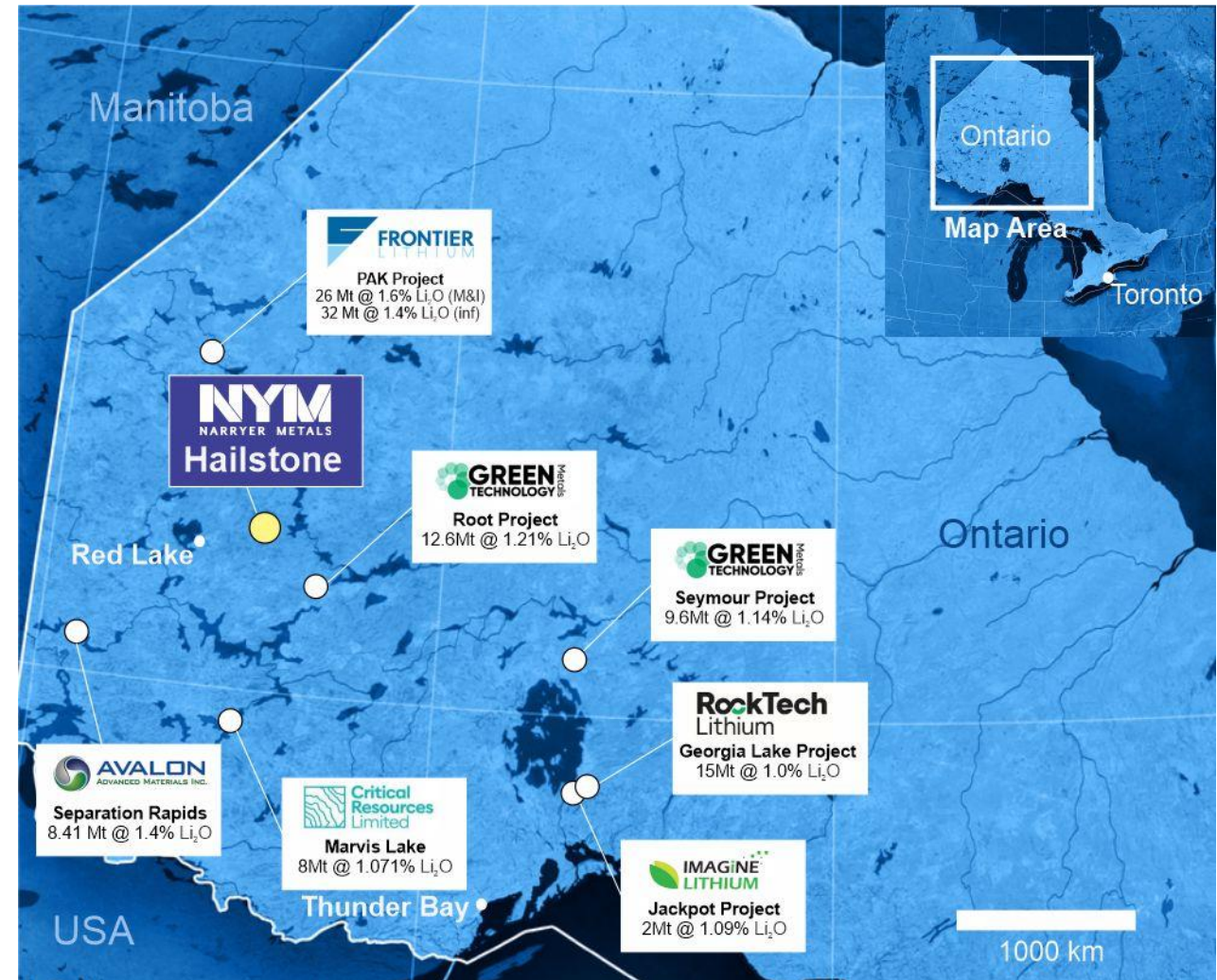
James Bay Regional Setting

- ▶ 7km² exploration project area
- ▶ Proximal to the community of Wemindji
- ▶ Tenure contains historic geological survey mapping^{1,2} identifying multiple outcropping spodumene and molybdenite bearing pegmatites, intruding volcanic sedimentary rocks of the Wemindji Greenstone Belt, Le Grande Subprovince
- ▶ No previous exploration
- ▶ Along strike in same greenstone belt to the rods Rubix Resources Ceiling Li Project³ (*ASX: RB6*, *Mkt Cap A\$12m*) and 100 km East to the Mia Li Project of Q2 Metals (*TSX-V: QTWO*, *Mkt Cap C\$63m*)
- ▶ Working through access arrangements



Northwest Ontario Lithium

- ▶ Hailstone Project located in emerging lithium province in NW Ontario (north of Thunder Bay), with recent increased exploration, new Li Resources and projects heading to production
- ▶ NW Ontario region has combined resources of > 110 Mt Tonnes of Li_2O
- ▶ Most advanced, Frontier Lithium (TSX-V: FL, Mkt Cap C\$221M) PAK project contains 58 Mt @ 1.5% Li_2O Resource and 22Mt @ 1.55% Li_2O Reserves. PFS now completed¹
- ▶ Green Technology Metals (ASX: GT1, Mkt Cap A\$130m). Two projects combines resource of 22.5 Mt @ 1.14% Li_2O and large exploration portfolio².
- ▶ Other Li Resources include Separation Rapids³ (TSX: AVL), Mavis Lake⁴ (ASX: CRR), Jackpot⁵ (TSX-V: ILI) and ⁶Georgia Lake (TSX-V: RCK)



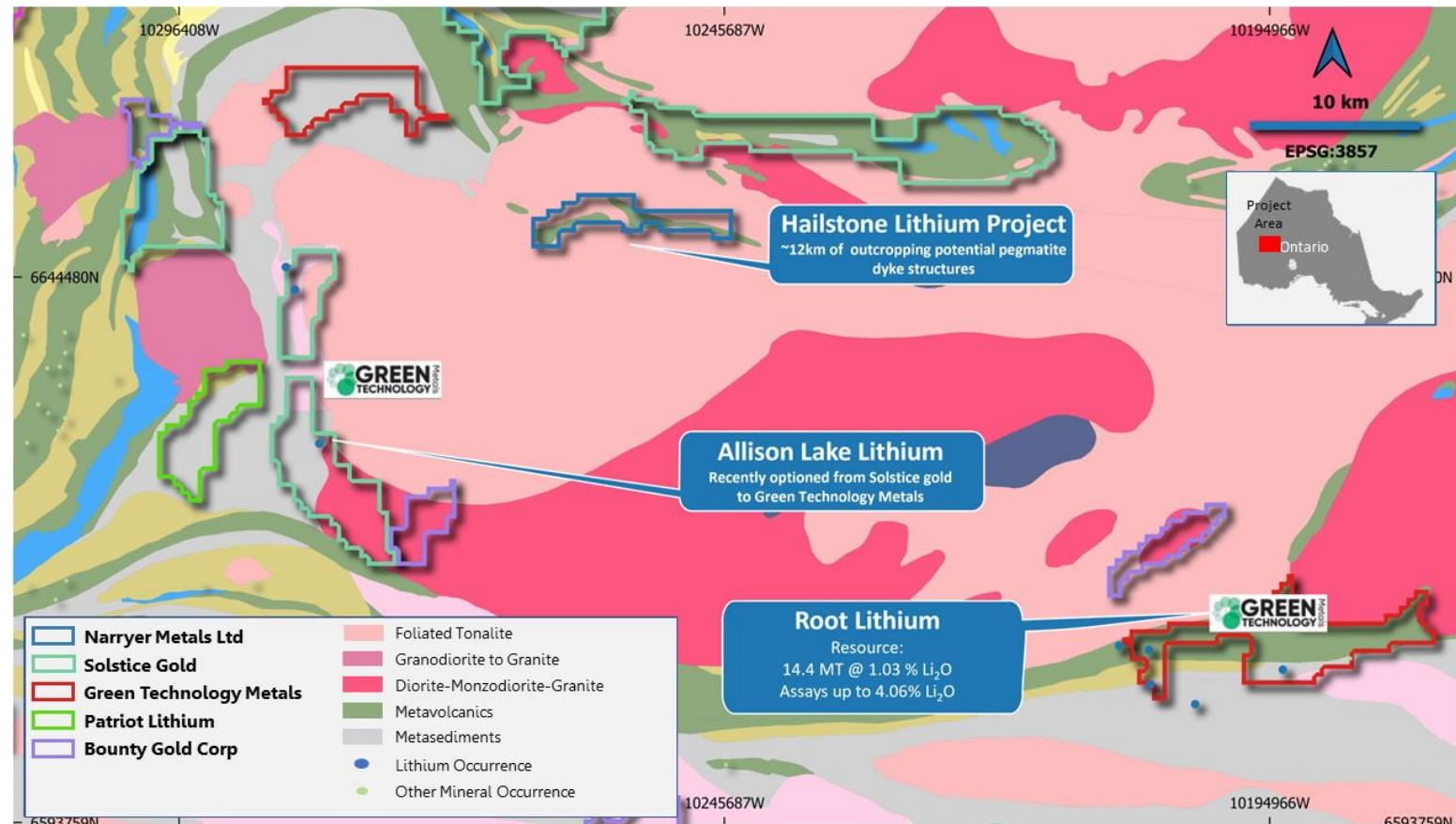
THE PROXIMITY OF THE PROJECT TO THE OTHER PROJECTS REFERRED TO ABOVE DOES NOT INFER THAT THE COMPANY WILL BE ABLE TO ACHIEVE SIMILAR EXPLORATION OR MINING SUCCESS.

¹Frontier Lithium TSX.V Announcement 31 May 2023; ²Green Technology Metals ASX Announcement 7 June 2023; Avalon Advanced Minerals TSX-V announcement April 2023; ⁴Critical Resources Limited ASX announcement 8 May 2023; ⁵Imagine Lithium TSX-V announcement 20 June 2023; ⁶RockTech Lithium TSX-V announcement 1 October 2022

Hailstone

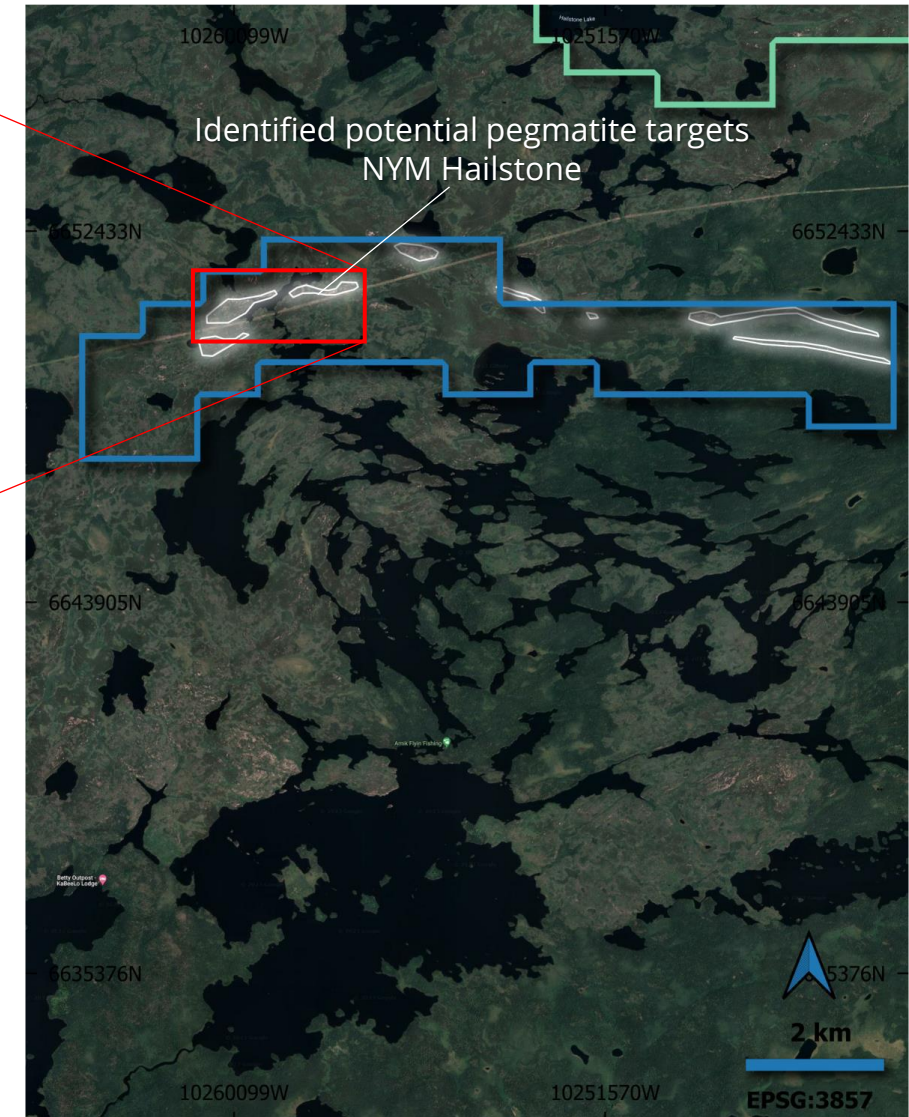
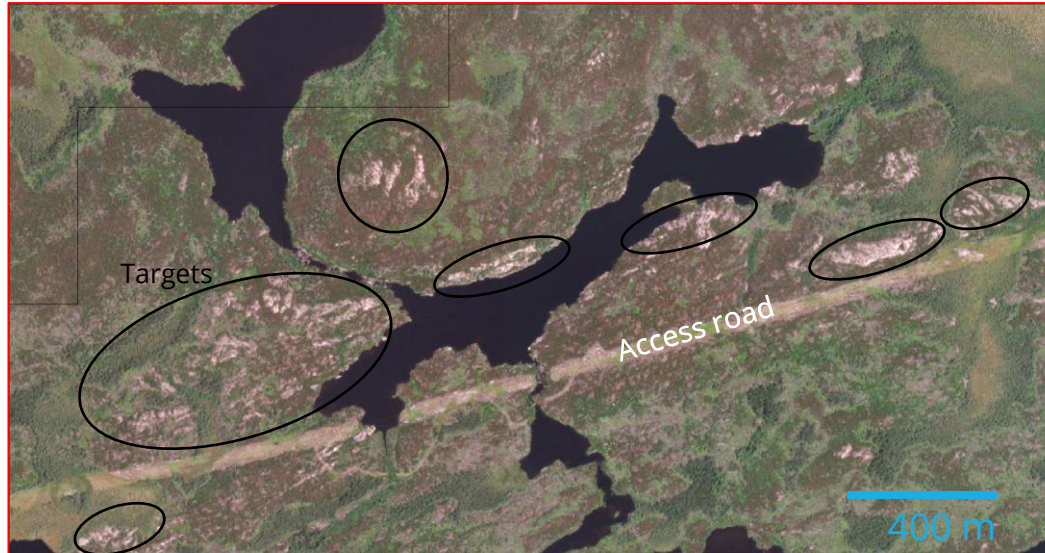
NW Ontario Regional Setting

- ▶ 20km² exploration project, located in the Red Lake Mineral District, NW Ontario
- ▶ 40km NW of Green Technology Metals Root Li Deposit¹ (with Resource of 12.6 Mt @ 1.2 % Li₂O); (ASX:GT1, Mkt Cap A\$130m) and numerous other Li exploration projects in the Allison Lake area
- ▶ Project covers 12km of contact between Archaean metavolcanics and foliated tonalite of the Confederation-Uchi greenstone belt. Similar geological setting to Root Li Project
- ▶ Hailstone contains two large, parallel northwest trending dyke structures, which are the main target area
- ▶ Project has good access, along existing powerline and track
- ▶ On ground activities including sampling have been conducted; awaiting assaying results



¹ Green Technology Metals ASX Announcement 7 June 2023

Hailstone Lithium



- Satellite imagery shows intrusive targets for immediate follow up with fieldwork
- Good access from existing track along powerlines
- MD has overseen groundworks

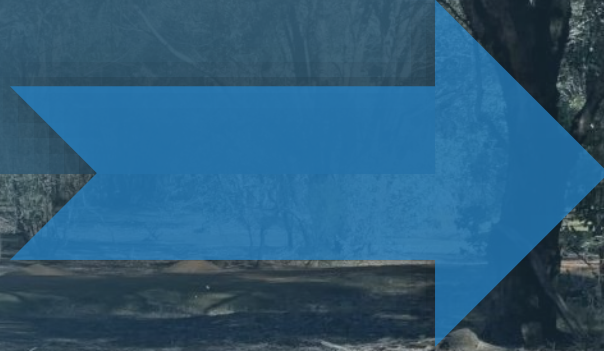
Hailstone Pegmatites



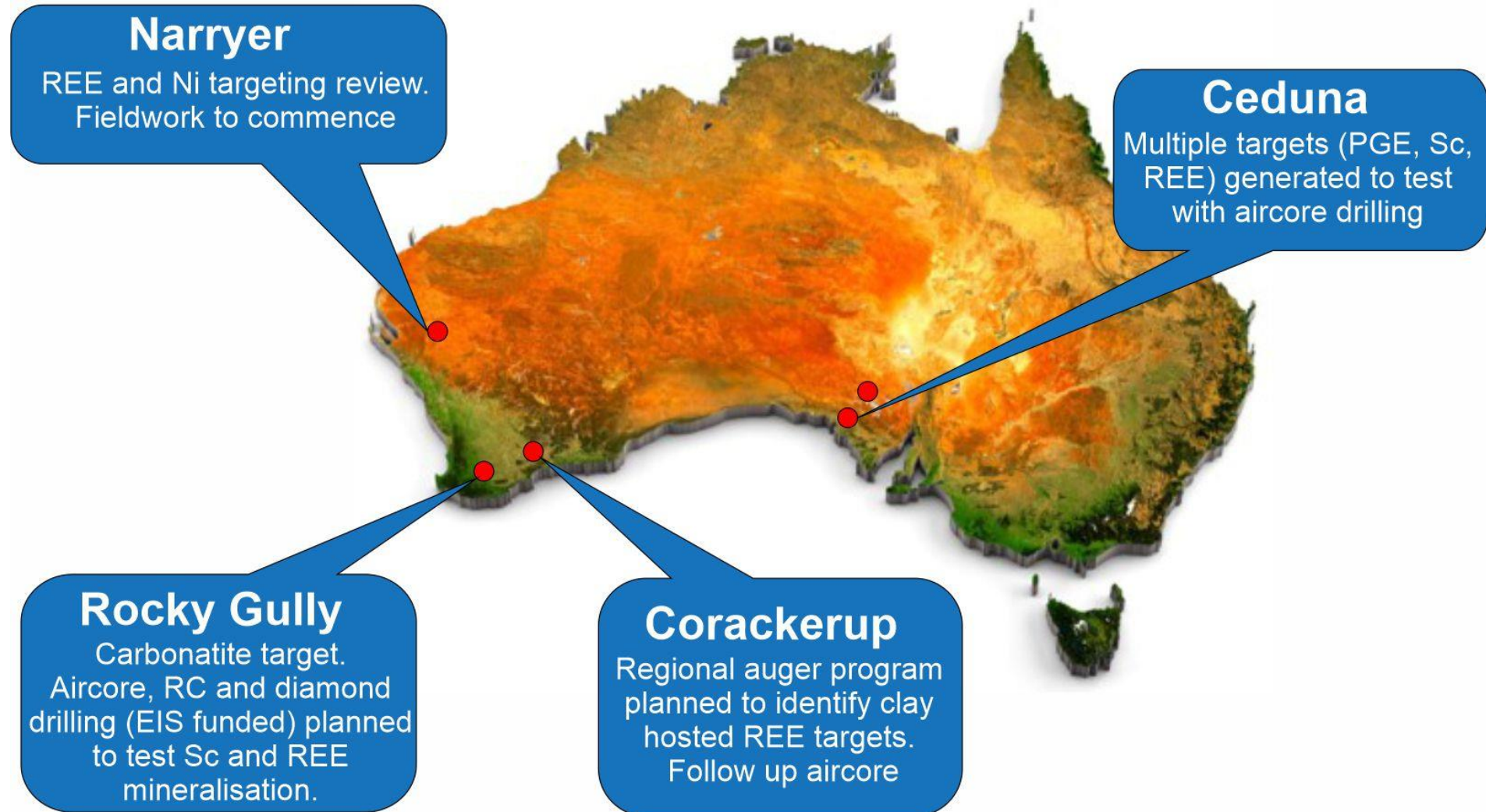
- Work team at Hailstone last week commencing 9 October
- MD Gavin England and team sighted pegmatites
- Sampling completed; results pending



Australian Critical Metals Projects



Work continues Australian Critical Minerals Projects



Corporate Snapshot

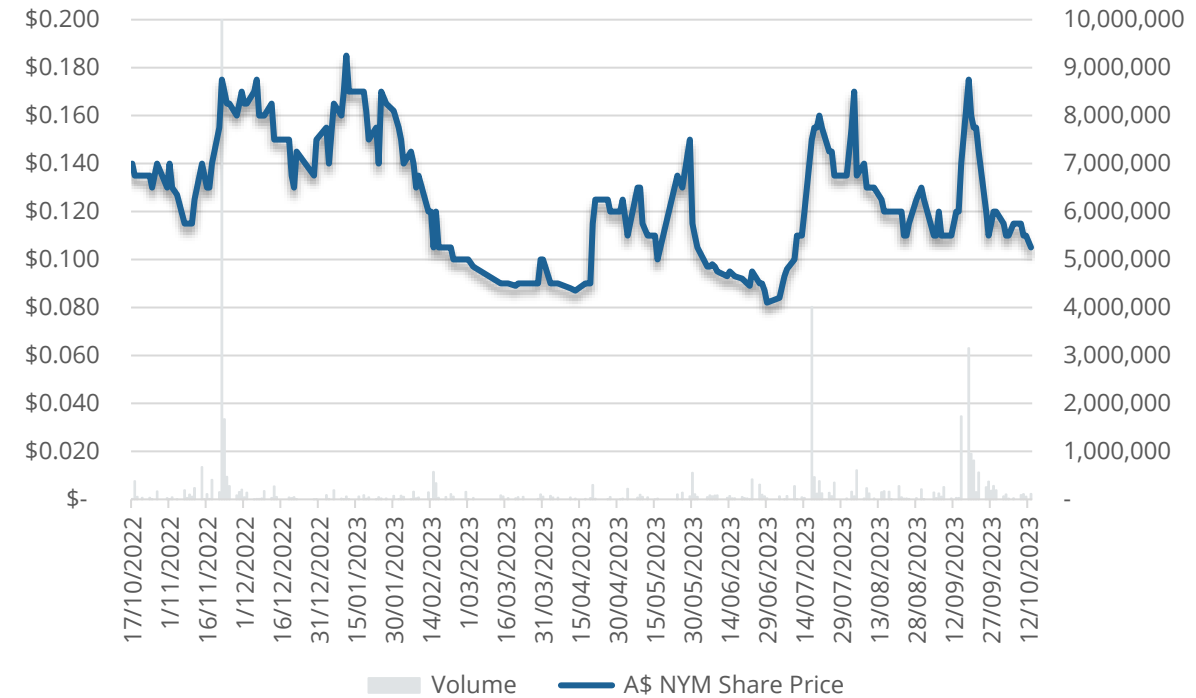
CAPITAL STRUCTURE

ASX CODE	NYM
Current Shares on Issue	65,056,077
Market Cap (October 2023 @ \$0.105)	~\$6.8M
Cash (30 June 2023)	\$1.1M
Top 20 Shareholders	50.6%
Directors and Management	20.5%
Share Options (@ \$0.30)	12,000,000
Board/Management Performance Rights	5,010,000

BOARD AND MANAGEMENT

Richard Bevan	Non Exec Chairman
Gavin England	Managing Director
Damon O'Meara	Non Exec Director
Phil Warren	Non Exec Director
Emma Wates	Joint Company Secretary
Cameron O'Brien	Joint Company Secretary
Jane Crawford	GM - Corporate

SHARE PRICE PERFORMANCE (12 months)





NARRYER METALS

Contact Details

Dr Gavin England
Managing Director

gavin@narryer.com.au
+61 8 9322 7600

Investor Relations
Evy Litopoulos
ResolveIR
evy@resolveir.com

For more info:
www.narryer.com.au

ASX: **NYM**