

30 March 2023

## Exploration Commences at Liparamba Nickel Sulphide Project, Tanzania

Resource Mining Corporation Limited (ASX:RMI) ("RMC" or the "Company") is pleased to advise that it has commenced exploration activities at its Liparamba Nickel Project, located in Tanzania within the Nyasa Ruvuma province. The purpose of the exploration is to test for nickel sulphide mineralisation within large and significant co-incidental geophysical and geochemical ultramafic targets previously identified by BHP/ Albidon.

### Highlights

- The Liparamba exploration program is expected to test at least 2 identified targets, located along 3 to 4km of the known mafic / ultramafic inlier's contact zones. Refer to Figure 1.
- Mineralogical studies have confirmed the presence of high-grade nickel sulphides along the southwestern contact of the Liparamba mafic inlier.
- Early site investigation has identified historical trenching by previous explorers and have identified outcropping undifferentiated mafic rocks confirming the presence of the mafic inliers described by BHP / Albidon. Refer to Figure 2.
- The Company has embarked on a large, 4.4km<sup>2</sup> AMT geophysical survey, (Natural-source, Audio-frequency Magnetotellurics, "AMT"), to cover and confirm the previously identified targets, and is expected to be completed by mid-April 2023.
- An initial Reverse Circulation ("RC") drilling campaign consisting of 12 holes for 2,160 metres is planned to drill test at least 2 targets. Drilling is expected to commence in early-May.
- The team has secured access from local authorities and the community and has commenced with clearing for the AMT survey and additional geological mapping.

Resources Mining Corporation's Chief Executive Officer, Mr. Andrew Nesbitt said:

*"We are very excited to commence exploration at Liparamba. This presents a very exciting opportunity as previous work carried out by BHP has indicated high quality and significant walk-up, drill-ready targets. We are confident of success and this exploration should assist with the Company's strategy of locating significant Ni resources within our Tanzanian project portfolio."*

### Liparamba field program

The works underway include liaison with local authorities, clearing of AMT survey lines, AMT surveying, geological mapping and preparation for the upcoming RC drill program.

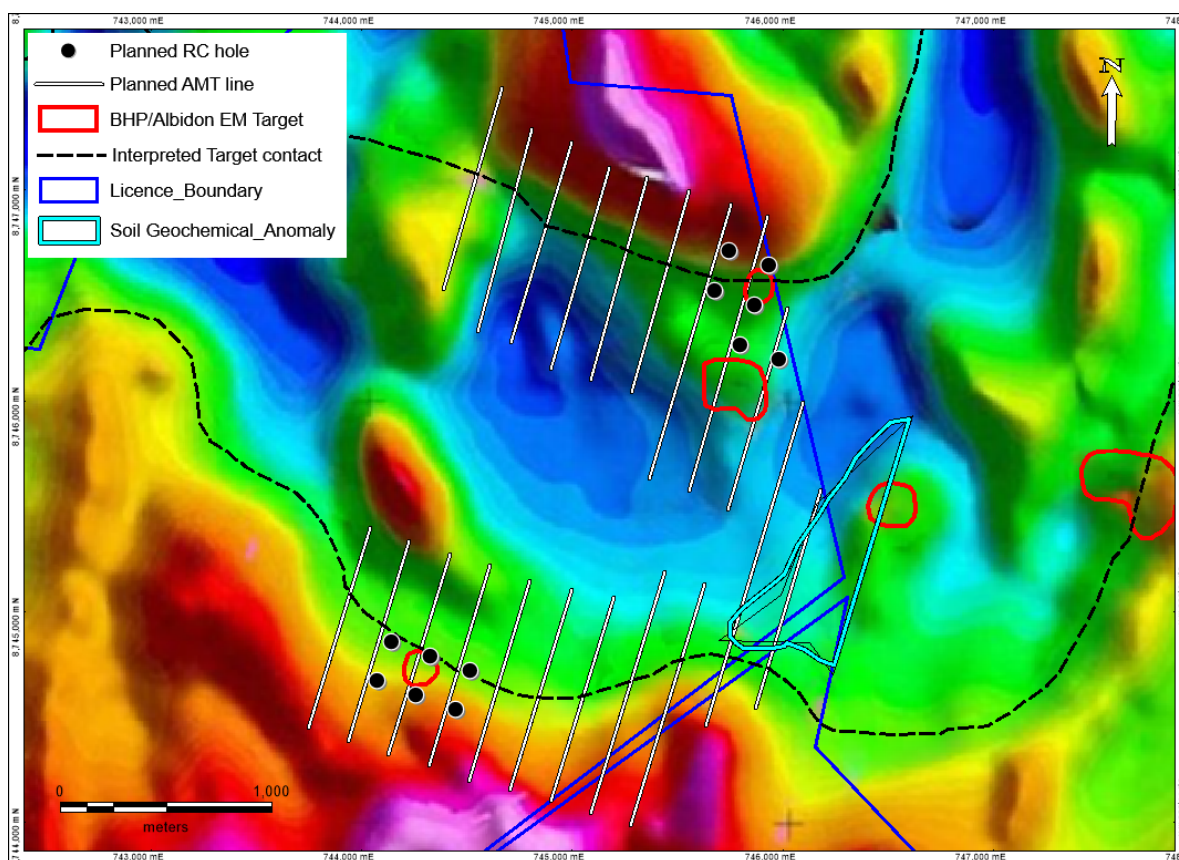
The planned exploration works were developed from previous studies completed by Albidon and BHP. Albidon/BHP identified numerous co-incidental anomalies over very prospective geology within the East Africa Nickel Belt. The anomalies included soil geochemistry analysed to be synonymous with Ni Sulphide presence, mafic and ultramafic geology confirmed by mapping and gravity surveys, and a series of EM geophysical targets along clearly defined ~4km long mafic/ ultramafic inlier edges.

The work identified several EM targets and diamond holes had previously been planned to test each identified target. Several of the EM conductors are coincident with nickel and copper geochemical anomalies defined by soil and/or drainage geochemical sampling.

At Liparamba, one of the conductors was coincident with a geochemical anomaly defined by assay values of up to 3,500ppm Ni (0.35% Ni) in soil samples\*.

An AMT geophysical survey will be conducted by South African Company, GF International Geoscience Services, and is planned to be completed in mid-April 2023. Reverse Circulation (RC) drilling will commence in May 2023, with a program comprised of 12 RC drill holes for 2,160m. The drilling program plan will be finalised post the geophysical interpretation overlain with the existing substantial supporting data. RC drilling assay results are expected to be received by the end Q2 2023.

**Figure 1: Liparamba Targets, proposed RC Drill holes and AMT Survey lines**



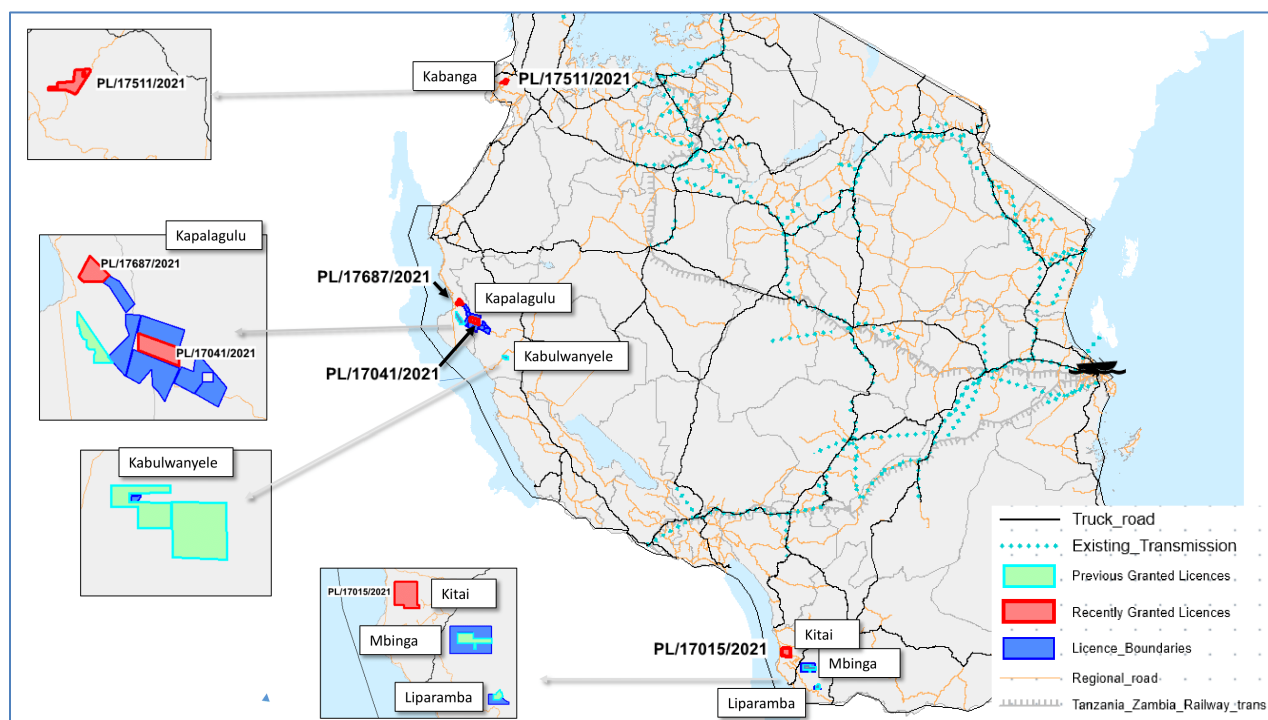
\*Albidon ASX Release 2008



**Figure 2: Undifferentiated mafic rocks confirming the presence of the mafic inliers described by BHP / Albidon**



**Figure 3: Location of RMC Tanzanian Projects, specifically Liparamba in the south of the country**



This ASX announcement has been authorised for lodgment by the Board of Resource Mining Corporation Limited.

For further information, contact	For investor or media inquiries, contact
Andrew Nesbitt Chief Executive Officer E: an@resmin.com.au	Alex Cowie NWR Communications E: alexc@nwrcommunications.com

## About Resource Mining Corporation

The strategic intent of Resource Mining Corporation (ASX:RMI) is to establish a long term business model based on mineral development delivering consistent shareholder value whilst operating in a sustainable way within the community and environment in which we operate.

RMC is currently exploring for Battery Minerals namely Nickel and Lithium in Tanzania and Finland. RMC has four projects in Tanzania focusing on Nickel occurrences in sulphides within known and prolific mafic and ultramafic intrusions. In Finland, RMC has three projects, two are focusing on the exploration of Lithium and the remaining project is targeting Nickel.

The Board has strong ties to Tanzania, Chaired by Asimwe Kabunga, a Tanzanian-born Australian entrepreneur who was instrumental in establishing the Tanzania Community of Western Australia Inc. and served as its first President.

Tanzanian Projects	Finnish Projects
<p><b><u>Nickel</u></b></p> <ul style="list-style-type: none"><li><b>Kabanga North Nickel Project</b> Situated along strike from the Kabanga Nickel Project, which has an estimated mineral resource of 58mt @ 2.62% Ni, or nickel equivalent grade of 3.14% (including cobalt and copper)<sup>1</sup>.</li><li><b>Kapalagulu Project</b> 32km mapped mafic/ultramafic sequence with historical reports noting nickel, PGE and copper anomalism.</li><li><b>Southern Projects (Liparamba, Kitai, Mbinga)</b> Previously explored by BHP/Albidon and Jacana Resources.</li></ul>	<p><b><u>Nickel</u></b></p> <ul style="list-style-type: none"><li><b>Roussakero Nickel Project</b> Discovered and drilled by GTK in 80s reporting 14m @ 1.03% Ni, 240ppm Co, 30m @ 0.64% Ni, 433ppm Co and 16m @ 0.92% Ni, 244ppm Co with 70% of the mafic-ultramafic mineralisation undrilled. JORC 2012 inferred MRE of 42.1Mt @ 0.40% Ni 0.005% Cu 0.016% Co 0.554% S<sup>2</sup>.</li></ul> <p><b><u>Lithium</u></b></p> <ul style="list-style-type: none"><li><b>Hirvikallio Lithium Project</b> Initial exploration works completed by GTK across the project's area identified approximately 25 km<sup>2</sup> with pegmatite dykes returning promising results including 5m @ 2.30% Li<sub>2</sub>O and 2m @ 1.33% Li<sub>2</sub>O<sup>3</sup>.</li><li><b>Kola Lithium Project</b> Located in the most significant lithium- mining region of Finland, and directly south of Keliber's flagship Syväjärvi and Rapasaari deposits.</li></ul>

<sup>1</sup> Refer to ASX announcement dated 9 May 2022 including the Competent Person Statement disclosed, and [Glencore Resources and Reserves as at 31 December 2019](#). The Mineral Resource Estimate is broken down into the following classifications – 13.8mt @ 2.49% Ni Measured, 23.4mt @ 2.72% Ni indicated & 21mt @ 2.6% Ni inferred. RMC does not have any interest in the Kabanga Nickel Project.

<sup>2</sup> Refer to ASX Announcement dated 28 February 2023 "Significant Nickel-Cobalt Sulphide Resource at Ruossakero" including the disclosed Competent Person Statement. The Mineral Resource Estimate in accordance with the JORC Code (2012) reporting guidelines of 42.1Mt@0.40%Ni (at Ni cut-off 0.30%Ni), and 0.005%Cu, 0.016%Co, 0.554%S, and has been classified as Inferred. No Measured or Indicated Mineral Resources have been defined.

<sup>3</sup> Refer to ASX Announcement dated 7 June 2022 "Nickel and Lithium Tenements under Exclusive Option" including the disclosed Competent Person Statement.

## Competent Persons Statements

Information in this announcement that relates to Exploration results and targets is based on, and fairly reflects, information compiled by Mr. Mark Gifford, a Competent Person who is a Fellow of the Australian Institute of Mining and Metallurgy. Mr Gifford is an independent consultant for Resource Mining Corporation Limited. Mr Gifford has sufficient experience that is relevant to the style of mineralization and type of deposit under consideration and to the activity he is undertaking to qualify as a Competent Person as defined by the 2012 Edition of the Australian Code for Reporting of Exploration Results, Mineral Resources and Ore Reserves. Mr Gifford consents to the inclusion of the data in the form and context in which it appears.

Where the Company references Mineral Resource Estimates previously announced, it confirms that it is not aware of any new information or data that materially affects the information included in those announcements and all material assumptions and technical parameters underpinning the resource estimates with those announcements continue to apply and have not materially changed.