



Asia-Pacific Gold and Copper Mining Company

Mines and Money Connect, Melbourne

June 2023

Andrew Corbett, Managing Director

- ✓ Mineral Hill delivering growth in gold and copper production
- ✓ 3.8Moz Misima Gold Project Definitive Feasibility Study complete

ASX: KSN



Disclaimer

Forward Looking Statements

Certain statements contained in this presentation, including information as to the future financial or operating performance of Kingston Resources Limited (“KSN”) and its projects, are forward looking statements. Such forward looking statements:

- include, among other things, statements regarding incomplete and uncertain proposals or targets, production and prices, operating costs and results, capital expenditures, and are or may be based on assumptions and estimates related to future technical, economic, market, political, social and other conditions;
- are necessarily based upon a number of estimates and assumptions that, while considered reasonable by KSN, are inherently subject to significant technical, business, economic, competitive, political and social uncertainties and contingencies; and
- involve known and unknown risks and uncertainties that could cause actual events or results to differ materially from estimated or anticipated events or results reflected in such forward looking statements.

KSN disclaims any intent or obligation to update publicly any forward looking statements, whether as a result of new information, future events or results or otherwise. The words “believe”, “expect”, “anticipate”, “indicate”, “contemplate”, “target”, “scope”, “plan”, “intends”, “continue”, “budget”, “estimate”, “may”, “will”, “schedule” and similar expressions identify forward looking statements. All forward looking statements made in this presentation are qualified by the foregoing cautionary statements. Recipients are cautioned that forward looking statements are not guarantees of future performance and accordingly investors are cautioned not to put undue reliance on forward looking statements due to the inherent uncertainty therein.

Disclaimer

No representation or warranty, express or implied, is made as to the fairness, accuracy, completeness or correctness of the information, opinions and conclusions contained in this presentation. To the maximum extent permitted by law, none of KSN, its directors, employees or agents, nor any other person accepts any liability, including, without limitation, any liability arising out of fault of negligence, for any loss arising from the use of the information contained in this presentation. In particular, no representation or warranty, express or implied is given as to the accuracy, completeness or correctness, likelihood of achievement or reasonableness or any forecasts, prospects or returns contained in this presentation nor is any obligation assumed to update such information. Such forecasts, prospects or returns are by their nature subject to significant uncertainties and contingencies.

The information contained in this presentation is for informational purposes only and does not constitute an offer to issue, or arrange to issue, securities or other financial products. The information contained in this presentation is not investment or financial product advice and is not intended to be used as the basis for making an investment decision. The presentation has been prepared without taking into account the investment objectives, financial situation or particular needs of any particular person. Before making an investment decision, you should consider, with or without the assistance of a financial adviser, whether an investment is appropriate in light of your particular investment needs, objectives and financial circumstances. Past performance is no guarantee of future performance.

Exploration by Other Explorers

This presentation contains information sourced from the reports of Other Explorers. References to the original reports are provided as footnotes where the information is cited in this presentation. KSN does not vouch for the accuracy of these reports. KSN has taken the decision to include this information as it is in the public domain and as we assess it to be of relevance to shareholders and investors.



Diamond Drilling at Pearse North

Company vision

Becoming a leading ASX-listed mid-tier gold and copper producer, pioneering excellence and delivering sustainable value to stakeholders



Two advanced 100%-owned gold & copper projects



Management team; jurisdictional experience and a track record of success



Aiming to double production and extend mine life from current resources



Exceptional gold & copper exploration upside



Existing approvals and infrastructure



Exceptional growth opportunity; strategic regional acquisition



A diversified portfolio of gold and copper projects

Unleashing exponential growth and value



Misima Gold Project, PNG (100%)

- **DFS Validation:** Affirming the potential for a robust, scalable, and low-cost open pit operation.
- **Production Potential:** Anticipated gold production of ~2.4Moz over a 20-Year Mine Life (Avg. 128kozpa).
- **Strong Financial Viability:** Pre-Tax Net Present Value (NPV) of A\$956 Million (based on a US\$1,800/oz Gold Price).
- **Gold Price Sensitivity:** Highly leveraged to the upside of the gold price, amplifying potential returns.
- **Current Focus:** Prioritizing ESIA reports, strategic funding & development strategies.

Mineral Hill Mine, NSW (100%)

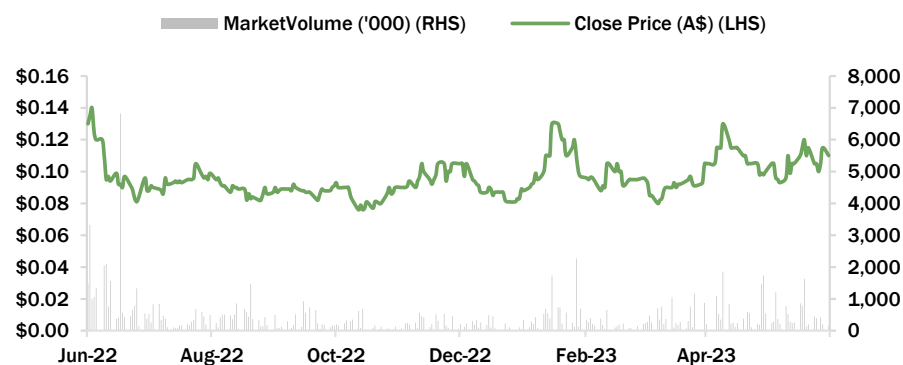
- **Sustained Cashflow:** Leveraging gold and silver production for ongoing financial success.
- **Infrastructure Excellence:** Extensive CIL & flotation processing plant and advanced underground development.
- **Mining Expansion:** Targeting resumption of open pit and underground operations during 2024.
- **Exploration Potential:** Exceptional upside within current Mining Leases (ML) and Exploration Licenses (EL).
- **Current Focus:** Maximizing returns through Tailings Project gold production, proactive exploration drilling, and strategic underground re-entry efforts.



Corporate snapshot

	Current
Share Price ¹	\$0.11
Shares on Issue	415.6M
Market Capitalisation	\$45.7M
Enterprise Value	\$40.7M
Cash ²	\$9.5M
Debt	\$5.0M

12 month Share Price Performance

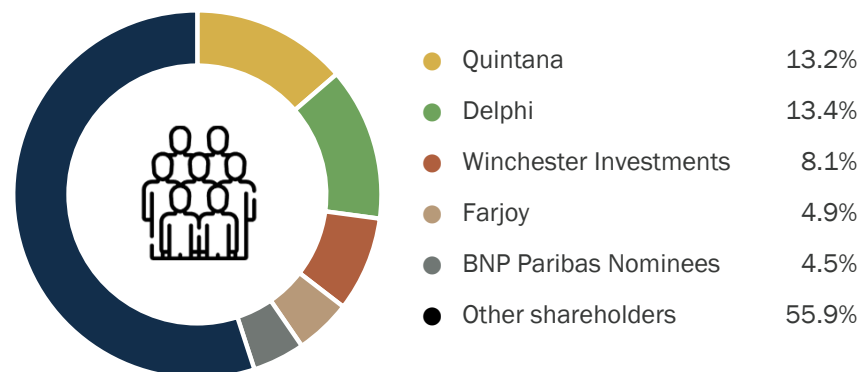


1. Close of trading 13 June 2023. 2. Last reported cash balance, as at 31 Mar 2023

Directors & Management

Mick Wilkes	Non-Executive Chairman	35+ years experience
Andrew Corbett	Managing Director	25+ years experience
Stuart Rechner	Non-Executive Director	20+ years experience
Tony Wehby	Non-Executive Director	35+ years experience
Stuart Hayward	Chief Geologist	30+ years experience
Geoff Merrell	GM Mineral Hill	25+ years experience

Shareholder Structure

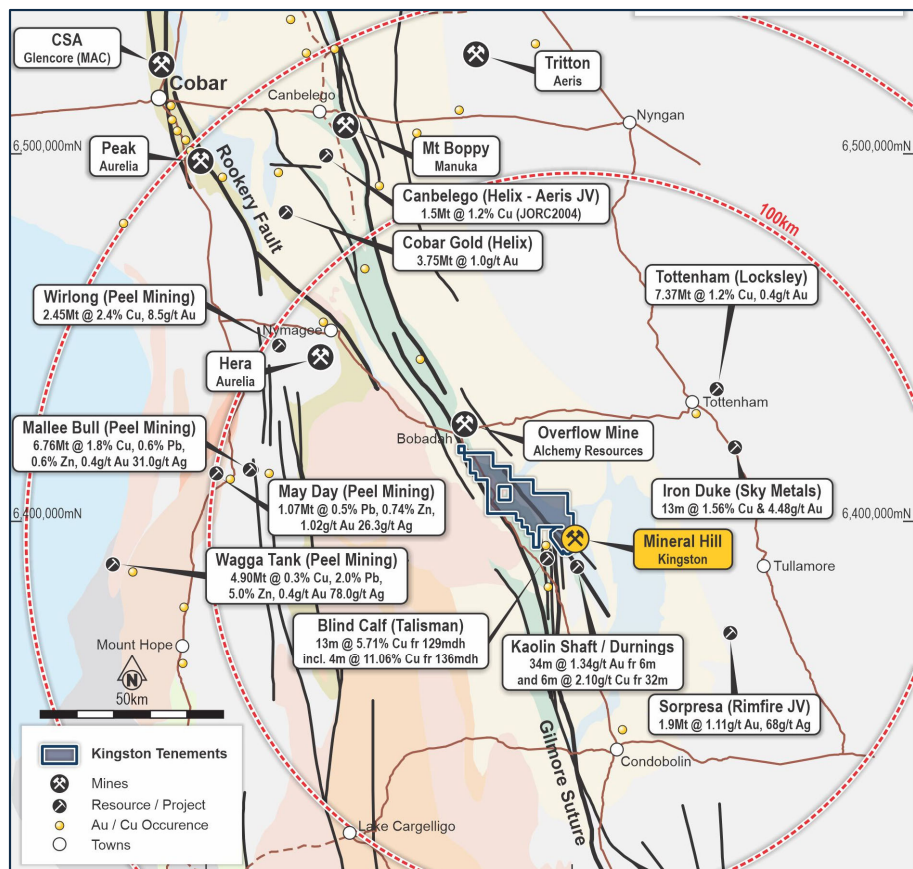


Mineral Hill Overview



Mineral Hill – strategic location

Significant organic and regional resource growth opportunities



Abundance of gold-silver and polymetallic Cobar-style deposits within approved ML's and within trucking distance of Mineral Hill processing plant

Location	516km W of Sydney NSW in Cobar Basin
Ownership	100%: 20 ML's (4.85km ²) and 2 EL's (335km ²)
Reserves (recovered)^{1,2}	53,000 AuEq oz
Resources (recovered)^{1,2}	795,000 AuEq oz (40% Cu, 30% Au)
Orebody	Structure controlled polymetallic vein and epithermal Au
Mining Methods	Open pit and underground long-hole stoping
Water	Supplied from underground and site storage
Power	Mains with grid upgrade
Historical Production	396koz Au, 33kt Cu (plus Pb, Zn concentrate)

1. Gold equivalent ounces calculated based on consensus commodity prices with adjustments based on company expectations. See Appendix for equivalency calculations
2. See KSN ASX announcements on 18 November 2021, 24 November 2022, 15 March 2023, 21 March 2023 for additional Mineral Hill Resource and Reserve information.

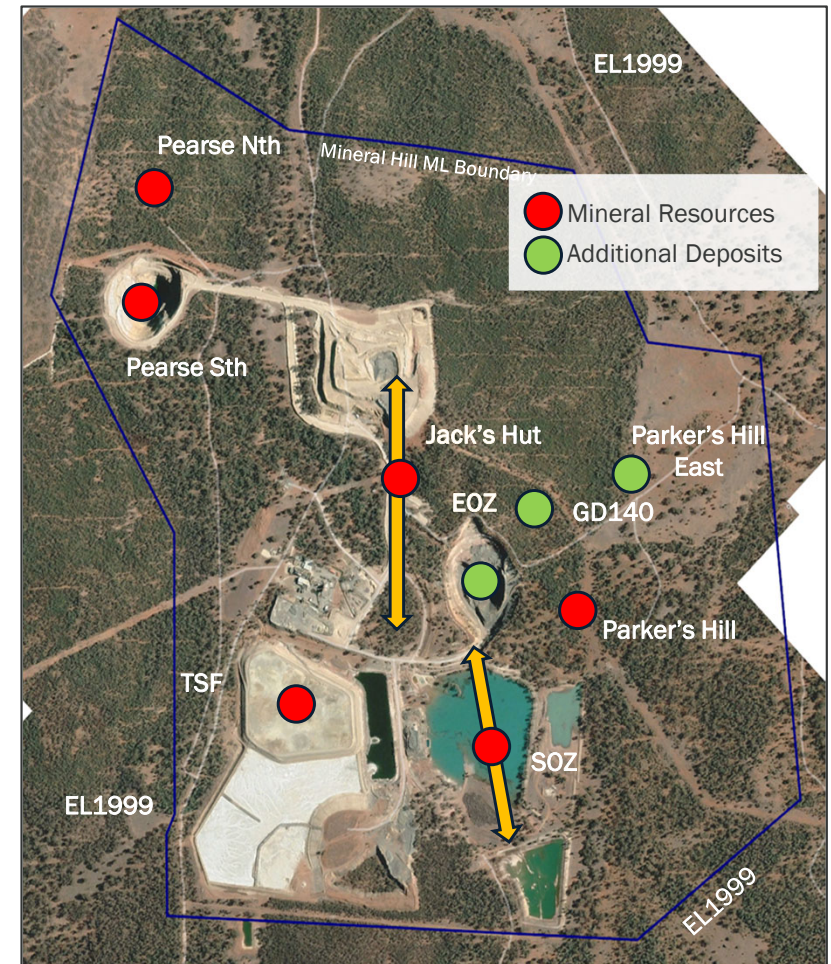
Mineral Hill – mining lease and infrastructure

Extensive existing infrastructure enables accelerated path to gold-silver dore, copper, lead and zinc production

- History of underground and open pit mines
- Numerous gold-silver and polymetallic Cobar style mineral deposits all within approved mining leases.
- Current cash flow from reprocessing historical tailings, owner miner.
- Full mine approvals, environmental permits & biodiversity offset, tailings facilities, water and power all in place.

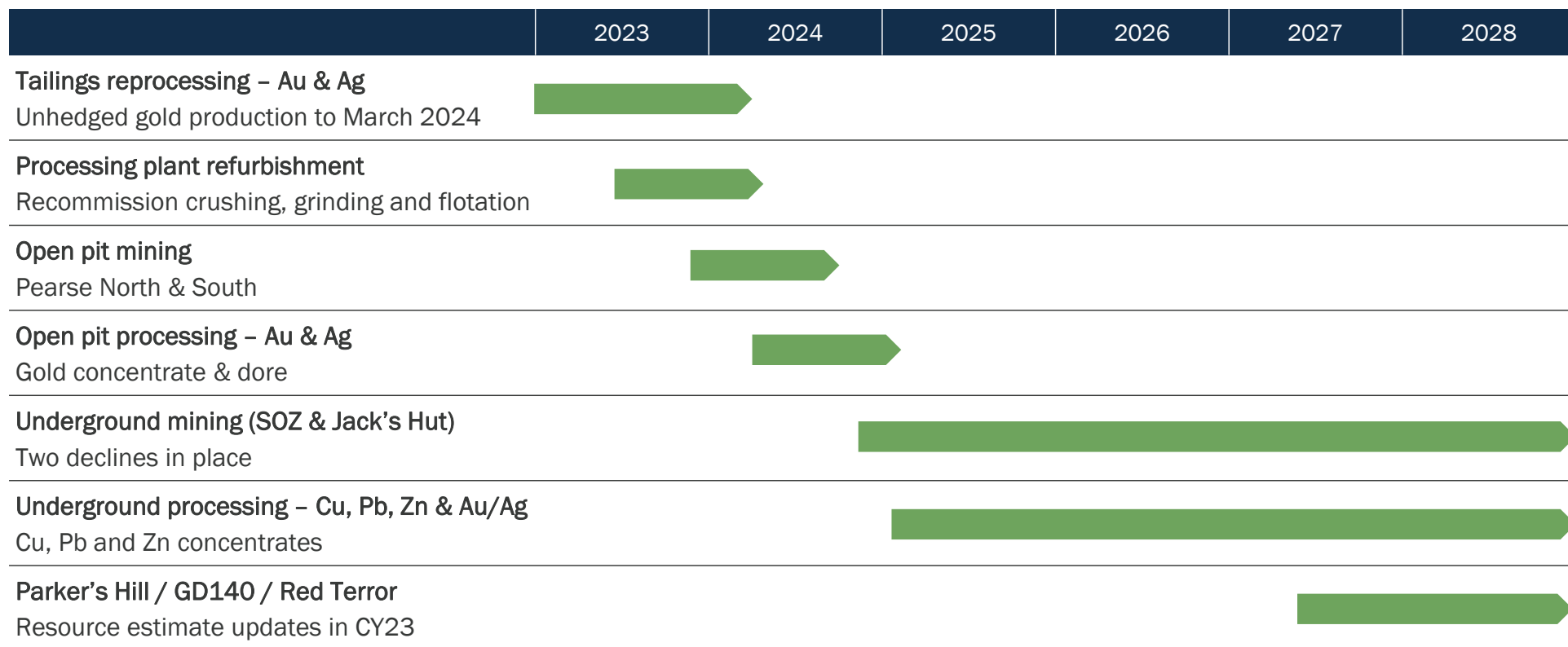
Processing Infrastructure

- **CIL** with 700ktpa capacity
- **Flotation plant** capacity of 350ktpa
- **3 x separate base metal concentrates**; copper, lead and zinc (superior payability compared to bulk concentrate).



Mineral Hill – dynamic project pipeline

Initial LOM out to the end of 2028



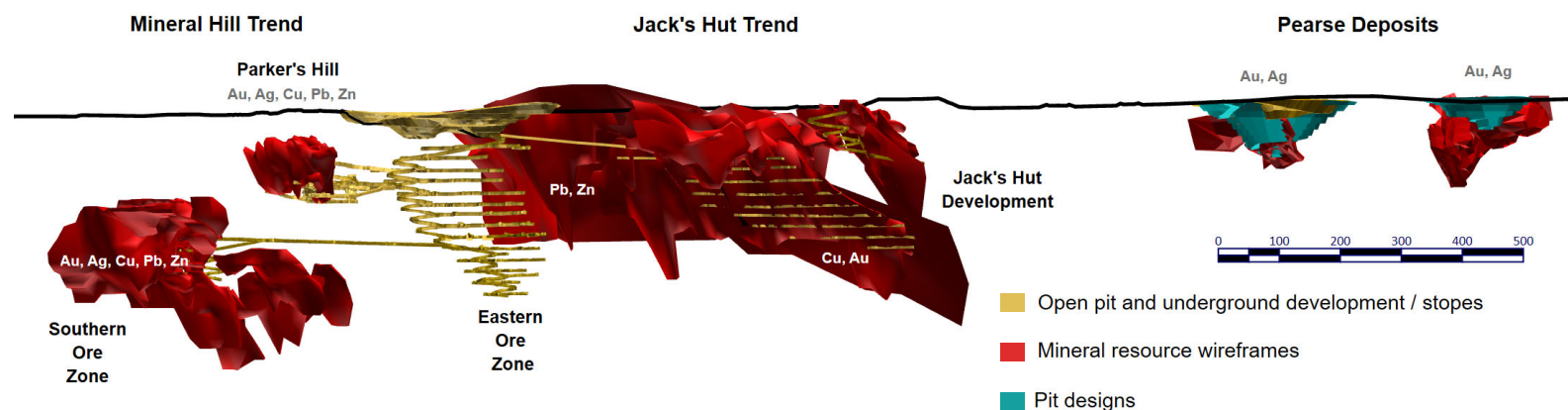
Mineral Hill Mine – Resources & Reserves

Attractive commodity base with significant growth potential

- High grade Pearse open pit Mineral Resources.
- Polymetallic underground Mineral Resources.
- Additional resource areas to be estimated in CY23 (Parker's Hill & Red Terror)

Total Probable Reserve Inventory					
Deposit	Kt	Au (g/t)	Ag (g/t)	Au (Koz)	Ag (Koz)
TSF	1,171	1.07		40	
Pearse South	140	4.00	84	18	375
Pearse North	120	3.40	25	13	95
TOTAL	1,431	1.6	57	71	470

Total Mineral Resources											
Deposit	Kt	Au (g/t)	Ag (g/t)	Cu %	Pb %	Zn %	Au (Koz)	Ag (Koz)	Cu (Kt)	Pb (Kt)	Zn (Kt)
TSF	1,171	1.07	0				40				
Pearse South	204	3.77	70				25	456			
Pearse North	239	2.97	25				23	190			
Southern Ore Zone	3804	1.29	19	0.9%	1.6%	1.4%	158	2349	34	60	54
Jack's Hut	1640	1.25	20	0.9%	0.8%	0.6%	66	1051	15	14	10
Parkers Hill	1843	0.19	43	1.3%	2.1%	0.9%	11	2520	23	39	17
TOTAL	8,901	1.13	26	1.0%	1.6%	1.1%	323	6,566	72	113	81



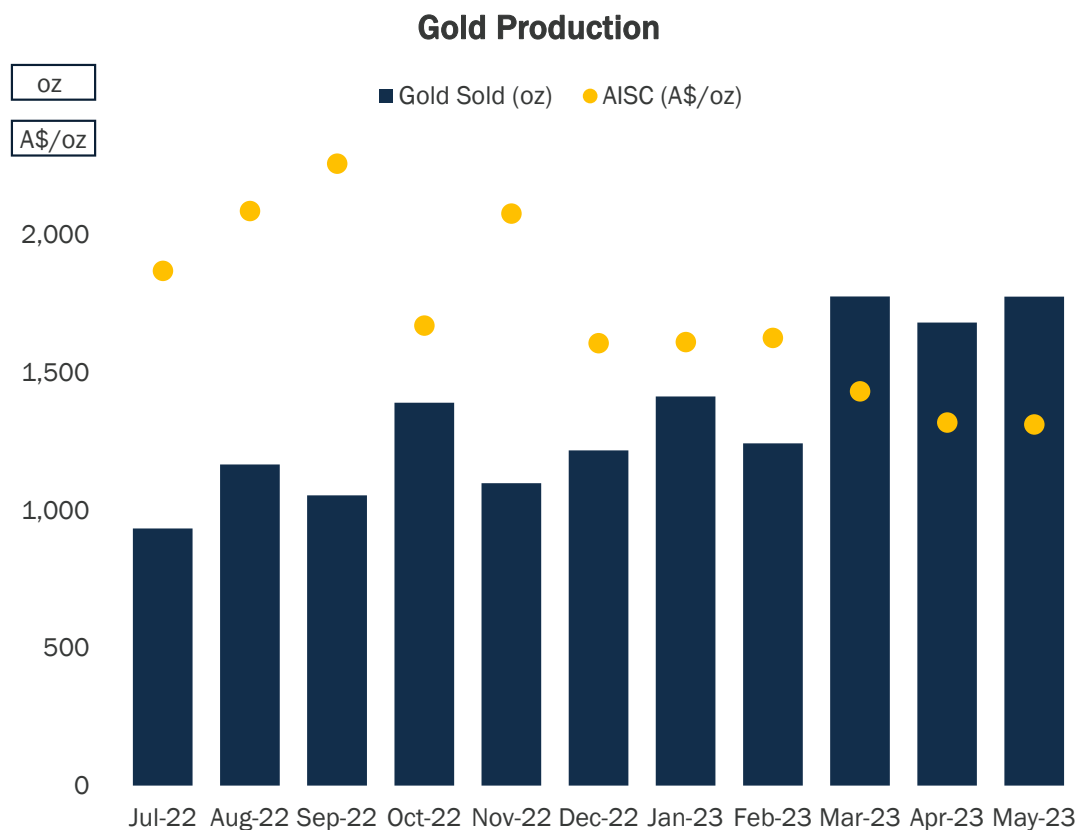
Mineral Hill – leveraging existing gold production from the Tailings Project

Tailings processing with CIL capacity up to 700ktpa

- Optimised the Tailings Project; increased throughput rates and increased recovery.
- **Gold production increased significantly, leading to reduced costs since the start of the project.**
- Owner mining focus to drive down costs.
- Mining of the tailings facility allows it to be rebuilt for future tailings storage.



Figure: Tailings Mining Project – current high margin gold production



Open pit Ore Reserve: high grade gold & silver

The first component of the LOM plan to recommence hard rock mining



Figure: Pearse North and South pit designs

- Updated Ore Reserve¹ in 2022.
- Metal pricing of US\$1800/oz for gold, US\$24/oz for silver and exchange rate (AUD/USD) of 0.70.
- Pearse South will be a cutback and deepening of the existing pit.
- Pearse North is a new pit.
- Both pits are fully permitted with all management plans and environmental approvals in place.
- Gold recovered via dore and gold concentrate.

Mineral Resource	Tonnes (kt)	Au g/t	Ag g/t	Au koz	Ag koz
Pearse South	204	3.77	70	25	456
Pearse North	239	2.97	25	23	190

Ore Reserve	Tonnes (kt)	Au g/t	Ag g/t	Au koz	Ag koz
Pearse South	140	4.0	84	18	375
Pearse North	120	3.4	25	13	95

1. See KSN ASX announcement on 15 March for further detail

Underground Mineral Resources

Southern Ore Zone and Jack's Hut (Cu-Au-Zn-Pb-Ag)

- Polymetallic Mineral Resources estimated for the **Southern Ore Zone (SOZ) and Jack's Hut¹**.
- Targeting recommencement of underground mining, **leveraging the existing decline development and infrastructure** for low-cost restart.
- Substantial Mineral Resource **growth potential at depth and along strike** with additional drilling.

Mineral Resource	Tonnes (Mt)	Au g/t	Ag g/t	Cu %	Pb %	Zn %
SOZ	3.80	1.29	19	0.9	1.6	1.4

Mineral Resource	Tonnes (Mt)	Au g/t	Ag g/t	Cu %	Pb %	Zn %
Jack's Hut	1.60	1.25	20	0.9	0.8	0.6

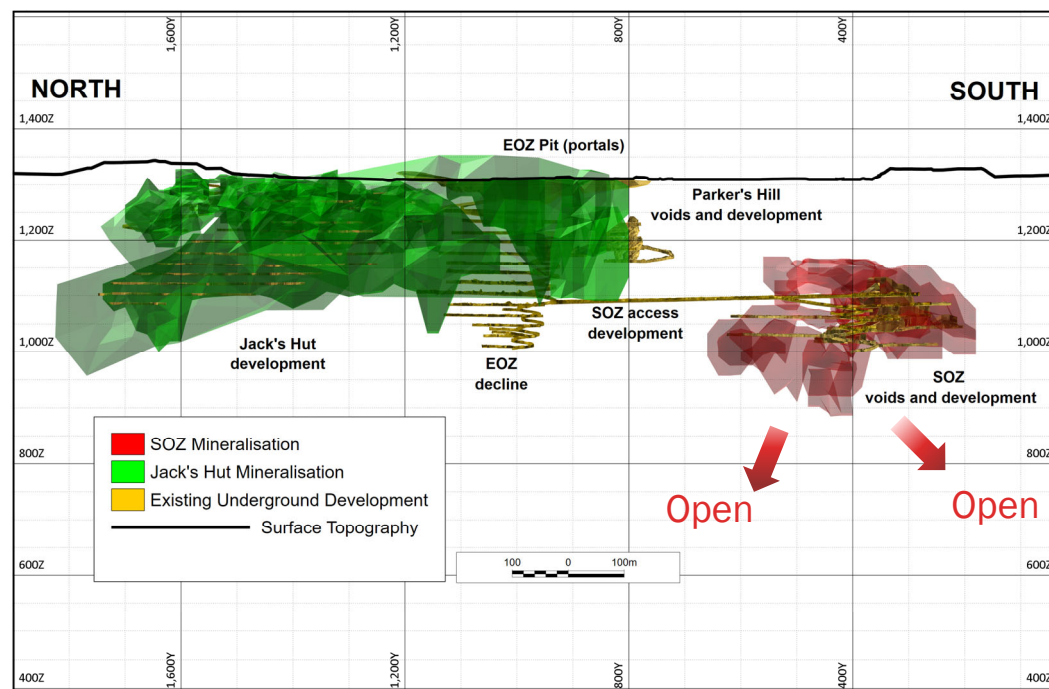


Figure: SOZ- long section demonstrates the infrastructure advantage of the SOZ with existing decline and level development

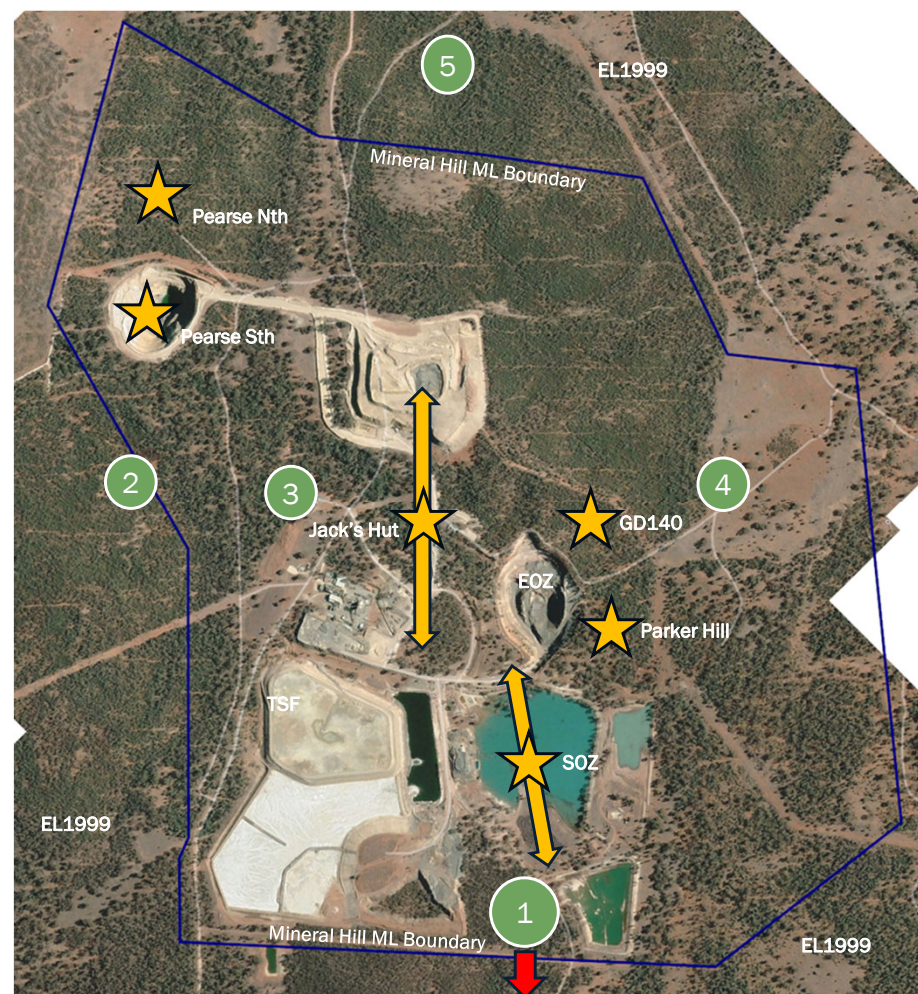
1. See KSN ASX announcements on 24 November 2022, 21 March 2023 for further detail

Advanced near mine development plan

Resource expansion strategy and near mine exploration

- Drilling at Pearse North to test Inferred and for pit slope analysis.
- Drilling at SOZ to test Inferred and determine potential stope spans.
- Drilling from underground to test SOZ Inferred and find extensions.
- Surface RC/diamond drilling at Jack's Hut – infill shallow levels and find extensions to modelled structures.
- RC/Diamond drilling near mine geophysical targets

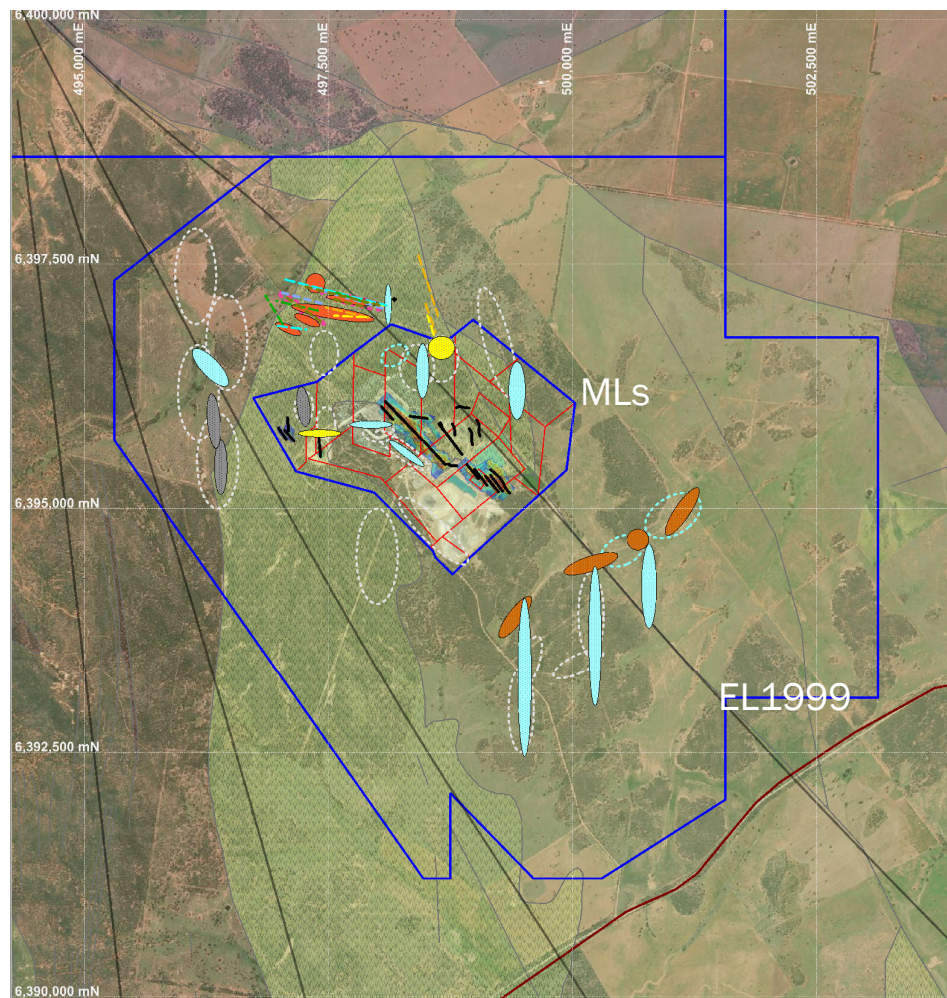
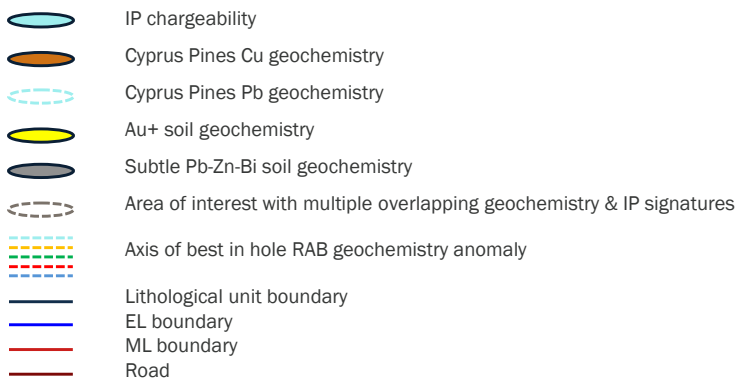
- 1 Southern Ore Zone (SOZ) Extension.
- 2 South Aurum (Pearse Corridor).
- 3 Ashes Graben.
- 4 Parkers Hill East.
- 5 Bogong Prospect.



Exploration within EL1999

Multiple drill targets to be tested

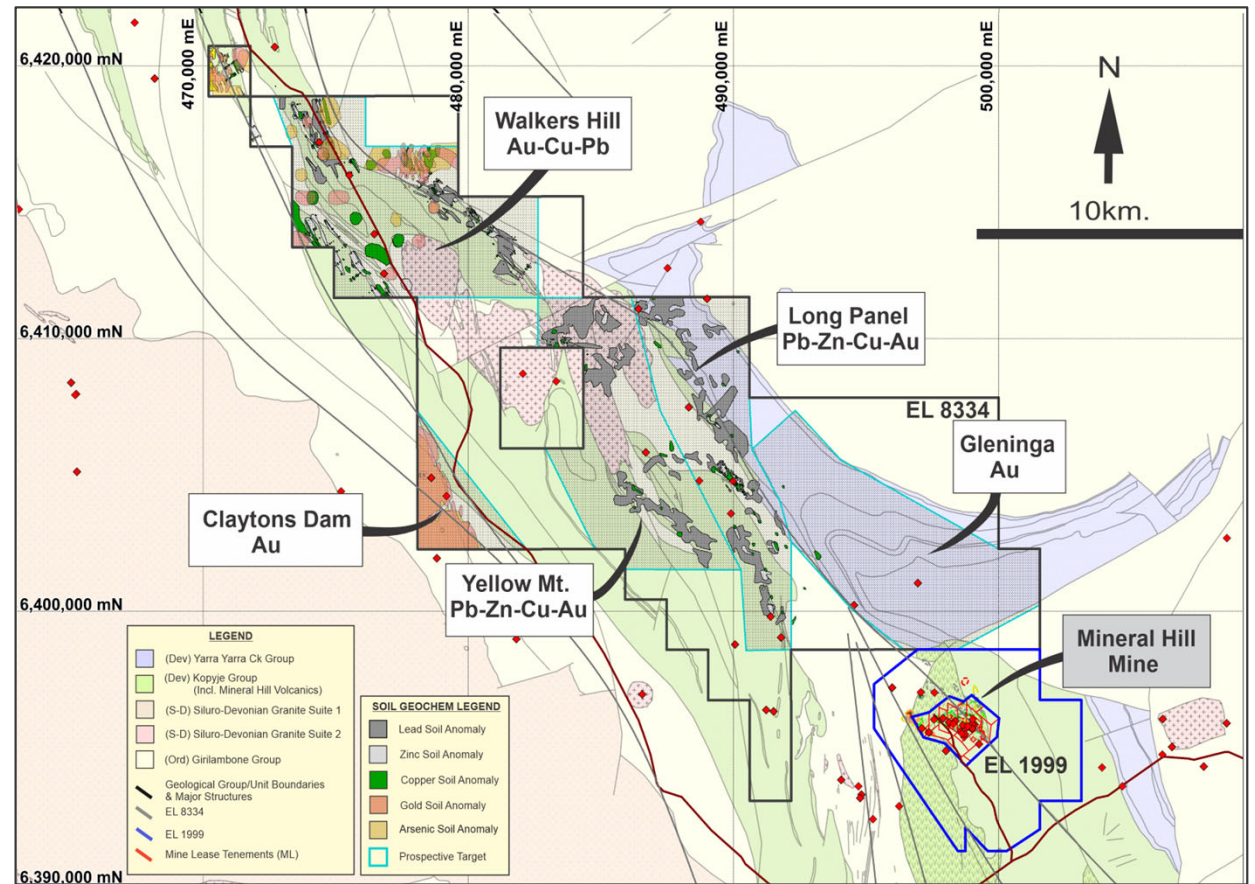
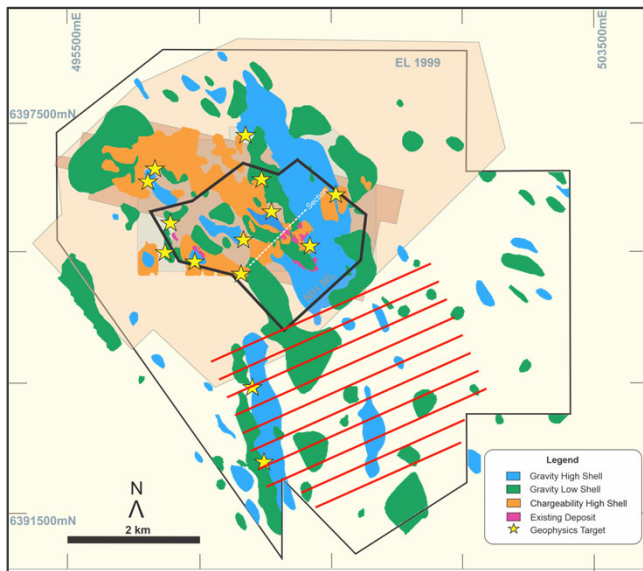
- Several near mine targets with potential to **significantly expand contained copper and gold.**
- Lead is the primary pathfinder element for polymetallic mineralisation.
- Geochemical anomalies coincident with IP chargeability anomalies.
- Broadly aligned with magnetics linears and domains.
- **Multiple untested targets**



Regional exploration

Broader exploration strategy within EL8334

- Drilling to target coincident geophysical targets (gravity and induced polarisation).
- Highly prospective geology and regional scale structures.
- Lead in soil anomalies to be drill tested.
- Land access agreements in progress.



Misima Gold Project



Misima Gold Project

PNG – home of world-class mines



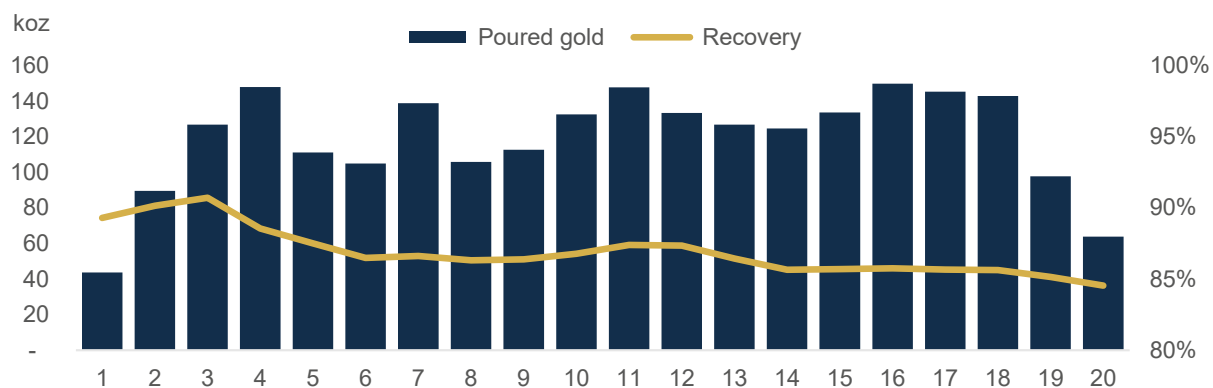
Misima – long-life, large scale gold project

1.73Moz Reserve underpins long-life Misima Project¹



- **Total Mineral Resource** of 169Mt @ 0.71g/t Au for **3.8Moz**
- **Probable Ore Reserve increased by 28%** to 76 @ 0.8 g/t for **1.73Moz**
- Ore Reserve –mine plan delivers **15-year mine life**
- Production Target – mine plan delivers **20-year mine life**

Reserve	Tonnes (Mt)	Au grade (gt / Au)	Ag grade (gt /Ag)	Au (Moz)	Ag (Moz)
Probable	75.6	0.79	4.5	1.9	10.9



1. See KSN ASX announcements on 6 June 2022 for further detail

Misima – definitive feasibility and ore reserve¹

Large scale, long-life, low-cost open pit gold and silver mine

- **High leverage opportunity on the gold price.**
- DFS uses \$1,800/oz gold price and 0.7 AUD:USD.
Gold price scenario of \$2,000/oz lifts LOM NPV to \$1.3bn.
- Work is continuing to find optimal funding and development options.



1. See KSN ASX announcements on 6 June 2022 for further detail

3.8Moz Gold

Resource

1.73Moz Gold

Ore Reserve

22.1Moz Silver

Resource

4.1Moz Silver

Ore Reserve

2.4Moz

Production at AISC

A\$1,217/oz

20-year life of mine

\$956M pre-tax

NPV with
22% IRR

LOM Revenue \$6.1bn

and

LOM pre-tax FCF

\$2.7bn

Extensive

mining history

de-risks development
pathway

Summary: focus on executing our clearly defined strategy

Leveraging existing gold-copper asset base while advancing future growth opportunities



Experienced management team focused on maximising shareholder returns



Mineral Hill holds an **extensive Resource base, gold production and cashflow, outstanding copper potential**



Focused gold-copper **exploration and long life development plan** at Mineral Hill



Misima holds a **large-scale, low-cost, long life, production opportunity** as we progress the strategic review



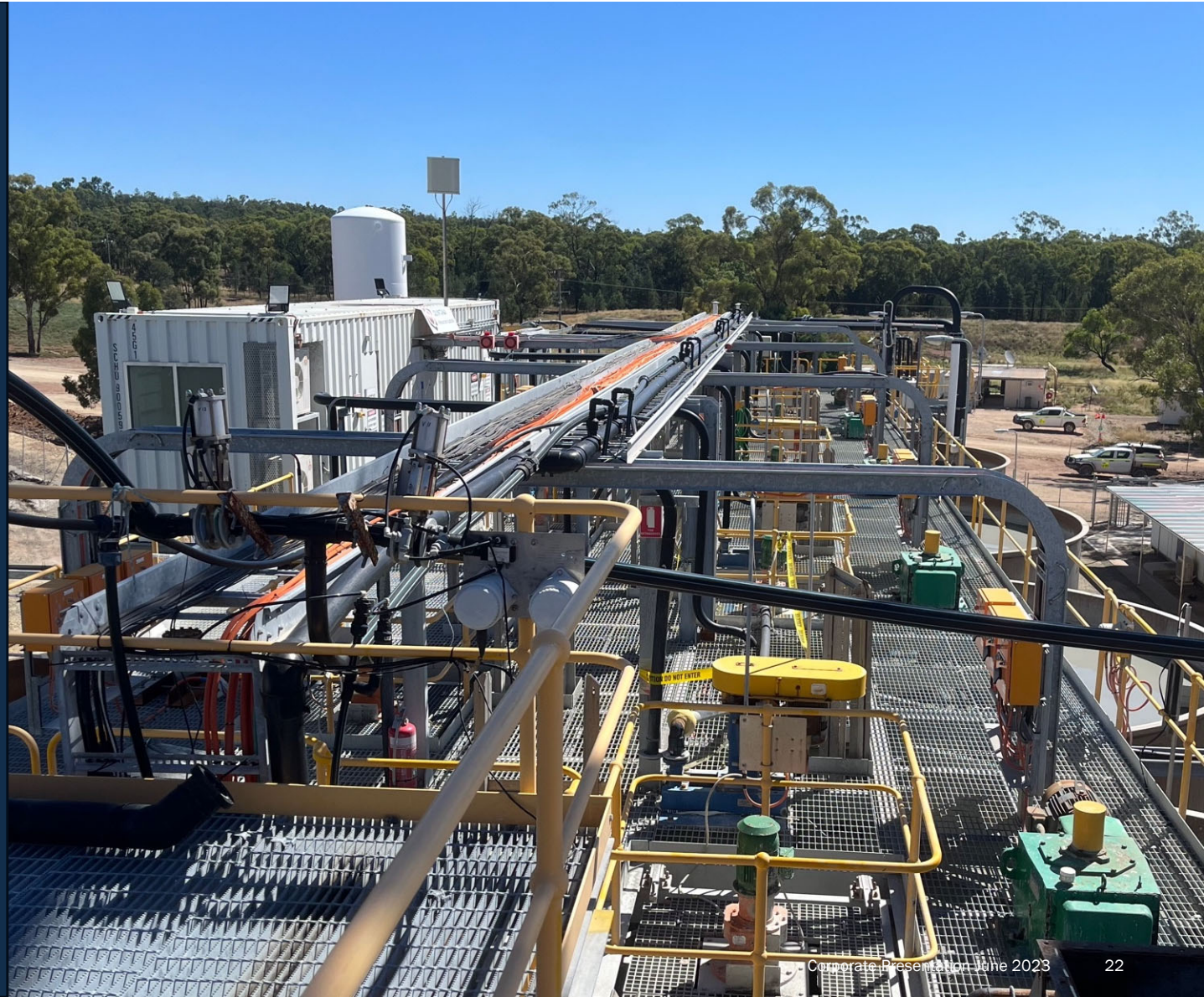
Platform for **growth from Mineral Hill cashflow** and optionality with the **Misima gold project**



Figure: KSNDDH015 - 71.9m: Chalcopyrite vein. Sample interval 71.6m to 72.3m: 5.5% Cu, 0.5g/t Au, 13g/t Ag.



Appendix



Mineral Hill Mine

Environmental and social licence to operate

- Stakeholder engagement – excellent relationship with landholders, community and Condobolin Chamber of Commerce
- Mining Licences (ML) granted
- Environment protection, cyanide and water permits in place
- Environmental Bonds in place with a staged payment schedule
- Development Applications (DA) approvals in place for tailings (TSF), Pearse pits, SOZ underground
- Mine Operation Plan (MOP) in place for the tailings retreatment, update required before re-commencing hard rock mining
- Biodiversity offset in place, review underway to increase offset by March 2023
- Dam Safety NSW site review complete
- Tailings Dam strategy
 - TSF1 currently being re-processed, approval will be sought for re-use as tailings storage on completion
 - TSF2 approved, lift 4 & 5 designed providing storage capacity for 2.5 years



Competent Person Statement

Competent Person's Statement - Mineral Resource Reported In Accordance with 2012 JORC Code – Mineral Hill

The information in this report that relates to the reporting of the Mineral Hill Mine Mineral Resource Estimate is based on and fairly represents, information and supporting documentation compiled by Mr. Stuart Hayward (BAppSc (Geology)) MAIG ,who is a Member of the Australian Institute of Geoscientists. Mr. Stuart Hayward is a full-time employee of Kingston Resources Limited. Mr. Hayward has sufficient experience relevant to the style of mineralisation and type of deposit under consideration and to the activity which he is undertaking to qualify as a Competent Person as defined in the 2012 Edition of the 'Australasian Code for Reporting of Exploration Results, Mineral Resources and Ore Reserves'. Mr. Hayward confirms that the information in the market announcement provided is an accurate representation of the available data and studies for the material mining project and consents to the inclusion in this report of the matters based upon the information in the form and context in which it appears. The Company confirms that the form and context in which the Competent Person's findings are presented have not been materially modified from the original report.

Competent Person's Statement - Mineral Resource Reported In Accordance with 2004 JORC Code – Mineral Hill

The information in this release that relates to Mineral Resources is based on information reviewed by Mr. Stuart Hayward (BAppSc (Geology)) MAIG, who is a Member of The Australian Institute of Geoscientists and a full-time employee of Kingston Resources Limited. Mr Hayward has sufficient experience in the style of mineralisation and types of deposit under consideration and to the activity he is undertaking to qualify as a Competent Person as defined in the 2004 Edition of the 'Australian Code for Reporting of Exploration Results, Mineral Resources and Ore Reserves'. Mr. Hayward confirms that the information in the market announcement provided is an accurate representation of the available data and studies for the material mining project and consents to the inclusion in the report of the matters based on his information in the form and context in which it appears. All Mineral Resource estimates were prepared and first disclosed under the JORC Code 2004 and are an accurate representation of the available data and studies for the Mineral Hill Mine. This information has not been updated since to comply with the JORC Code 2012 on the basis that the information has not materially changed since it was last reported. Work will commence on close of acquisition by the Company to bring each of the Mineral Resources into line with the JORC Code 2012.

Competent Person's Statement – Ore Reserve Reported In Accordance with JORC Code – Mineral Hill

The Ore Reserve and Mineral Resources estimates were prepared by a Competent person in accordance with the JORC Code 2012 with exception of the Parkers Hill Mineral Resource Estimates that have been prepared by a Competent Person in accordance with the JORC Code 2004 and have not been updated to comply with the JORC Code 2012 on the basis that the information has not materially changed since it was last reported. Pearce, Parkers Hill, Jacks Hut and the Southern Ore Zone Mineral Resource estimates and Ore Reserves have been adjusted by mining depletion using the production wireframes created by the site survey department at the time of mining. These wireframes represent the mining activities at these deposits to the best of Kingston's knowledge although they are not to be viewed as complete or accurate in their entirety and therefore mining depletion may be revised when Kingston is able to produce revised determinations on more complete data and verification thereof. Information pertaining to Mineral Resource Estimates (MRE) and Ore Reserves (OR) in this presentation has been previously released to the public. The tables on this page indicate the authors of the historical Resources/Reserves and the dates they were initially published. Kingston is not reporting these estimates as its own with exception of the MRE and OR for the TSF which has not been reported previously by any other company. The other original reports are available through the ASX website.

The Competent Person (JORC 2012) for the TSF Ore Reserve is Mr Jeremy Peters (BSc, BEng) a Fellow of the Australasian Institute of Mining and Metallurgy and Chartered Professional Geologist and Mining Engineer of that organisation. Mr Peters is a full-time employee of Burnt Shirt Pty Ltd and has sufficient relevant experience to act as Competent Person.

The Competent Person signing off on the overall Pearce Opencut Ore Reserves Estimate is Mr John Wyche BE (Min Hon), of

Australian Mine Design and Development Pty Ltd, who is a Fellow of the Australasian Institute of Mining and Metallurgy and who has sufficient relevant experience in operations and consulting for open pit metalliferous mines. Mr Wyche consents to the inclusion in this report of the information pertaining to the Pearce Opencut Ore Reserve in the form and context in which it appears.

Competent Person's Statement - Mineral Resource Reported In Accordance with 2012 JORC Code – Misima

The information in this report that relates to the reporting of the Misima Mineral Resource Estimate is based on and fairly represents, information and supporting documentation compiled by Mr. Stuart Hayward (BAppSc (Geology)) MAIG ,who is a Member of the Australian Institute of Geoscientists. Mr. Stuart Hayward is a full-time employee of Kingston Resources Limited. Mr. Hayward has sufficient experience relevant to the style of mineralisation and type of deposit under consideration and to the activity which he is undertaking to qualify as a Competent Person as defined in the 2012 Edition of the 'Australasian Code for Reporting of Exploration Results, Mineral Resources and Ore Reserves'. Mr. Hayward confirms that the information in the market announcement provided is an accurate representation of the available data and studies for the material mining project and consents to the inclusion in this report of the matters based upon the information in the form and context in which it appears. The Company confirms that the form and context in which the Competent Person's findings are presented have not been materially modified from the original report.

Competent Person's Statement – Ore Reserve Reported In Accordance with 2012 JORC Code – Misima

The Competent Person signing off on the overall Misima Ore Reserves Estimate is Mr John Wyche BE (Min Hon), of Australian Mine Design and Development Pty Ltd, who is a Fellow of the Australasian Institute of Mining and Metallurgy and who has sufficient relevant experience in operations and consulting for open pit metalliferous mines. Mr Wyche consents to the inclusion in this report of the matters based upon the information in the form and context in which it appears.

Kingston confirms that it is not aware of any new information or data that materially affects the information included in all ASX announcements referenced in this release, and that all material assumptions and technical parameters underpinning the estimates in these announcements continue to apply and have not materially changed.

Ore Reserve

Deposit	JORC	ASX Announcement	Competent Person	Company
Misima	2012	KSN 06/06/2022	John Wyche	AMDAD
TSF	2012	KSN 18/11/2021	Jeremy Peters	Burnt Shirt
Pearse North	2012	KSN 15/03/2023	John Wyche	AMDAD
Pearse South	2012	KSN 15/03/2023	John Wyche	AMDAD

Mineral Resource

Deposit	JORC	ASX Announcement	Competent Person	Company
Misima	2012	KSN 15/09/2021	Stuart Hayward	KSN
TSF	2012	KSN 18/11/2021	Troy Lowien	Groundwork Plus
Pearse South	2012	KSN 15/03/2023	Stuart Hayward	KSN
Pearse North	2012	KSN 15/03/2023	Stuart Hayward	KSN
Southern Ore Zone	2012	KSN 24/11/2022	Stuart Hayward	KSN
Jack's Hut	2012	KSN 21/03/2023	Stuart Hayward	KSN
Parkers Hill	2004	KBL 13/09/2011	Anthony Johnston	KBL

Mineral Hill – Resources and Reserves

Attractive commodity base with significant growth potential

Total Probable Reserve Inventory					
Deposit	Kt	Au (g/t)	Ag (g/t)	Au (Koz)	Ag (Koz)
TSF	1,171	1.07		40	
Pearse South	140	4.00	84	18	375
Pearse North	120	3.40	25	13	95
TOTAL	1,431	1.6	57	71	470

Total Mineral Resources											
Deposit	Kt	Au (g/t)	Ag (g/t)	Cu %	Pb %	Zn %	Au (Koz)	Ag (Koz)	Cu (Kt)	Pb (Kt)	Zn (Kt)
TSF	1,171	1.07	0				40				
Pearse South	204	3.77	70				25	456			
Pearse North	239	2.97	25				23	190			
Southern Ore Zone	3804	1.29	19	0.9%	1.6%	1.4%	158	2349	34	60	54
Jack's Hut	1640	1.25	20	0.9%	0.8%	0.6%	66	1051	15	14	10
Parkers Hill	1843	0.19	43	1.3%	2.1%	0.9%	11	2520	23	39	17
TOTAL	8,901	1.13	26	1.0%	1.6%	1.1%	323	6,566	72	113	81

- The Ore Reserve and Mineral Resources estimates were prepared by a Competent person in accordance with the JORC Code 2012 with exception of the Parkers Hill Mineral Resource Estimate, which been prepared by a Competent Person in accordance with the JORC Code 2004 and have not been updated to comply with the JORC Code 2012 on the basis that the information has not materially changed since it was last reported. Pearse South, Parkers Hill and the Southern Ore Zone Mineral Resource estimates and Ore Reserves have been adjusted by mining depletion using the production wireframes created by the site survey department at the time of mining. These wireframes represent the mining activities at these deposits to the best of Kingston's knowledge although they are not to be viewed as complete or accurate in their entirety and therefore mining depletion may be revised when Kingston is able to produce revised determinations on more complete data and verification thereof.
- Mineral Resources are reported inclusive of Ore Reserves.
- See Competent Person details and year of original release on slide 33.
- For full information of Mineral Resource and Ore Reserves see KSN announcement titled "Mineral Hill Mineral Resource and Ore Reserve Statement" released 18 November 2021.
- Rounding to significant figures may cause minor computational discrepancies.

Measured Resource Inventory											
Deposit	Kt	Au (g/t)	Ag (g/t)	Cu %	Pb %	Zn %	Au (Koz)	Ag (Koz)	Cu (Kt)	Pb (Kt)	Zn (Kt)
Southern Ore Zone	228	2.11	11	1.3%	0.5%	0.3%	15	79.9	3	1	1
TOTAL	228	2.11	11	1.3%	0.5%	0.3%	15	80	3	1	1

Indicated Resource Inventory											
TSF	1,171	1.07					40				
Pearse South	164	4.10	85				22	450			
Pearse North	224	3.00	25				22	180			
Southern Ore Zone	1,622	1.28	20	1.0%	1.8%	1.5%	67	1,038	16	29	24
Jack's Hut	608	1.53	7	1.3%	0.5%	0.4%	30	134	8	3	2
Parkers Hill	1,793	0.191	42	1.3%	2.1%	0.9%	11	2,443	23	38	16
TOTAL	5,582	1.06	30	1.2%	1.7%	1.1%	191	4,244	47	70	42

Inferred Resource Inventory											
Pearse South	40	2	5				3	6			
Pearse North	15	2.50	21				1	10			
Southern Ore Zone	1,954	1.20	20	0.7%	1.6%	1.5%	75	1,231	14	30	29
Jack's Hut	1,032	1.09	28	0.7%	1.0%	0.8%	36	917	7	11	8
Parkers Hill	50	0.20	48	0.7%	1.8%	2.4%	0.3	77	0.4	1	1
TOTAL	3,091	1.17	23	0.7%	1.4%	1.2%	116	2,242	22	42	38

Metal equivalents

This presentation quotes metal equivalent grades for the life of mine plan, Mineral Resources and Ore Reserves. Price assumptions used are based primarily on consensus forecasts with adjustments based on company expectations. Gold equivalent (AuEq) conversion factors are used within the announcement and are calculated by dividing price/unit for each commodity (Cu/t, Au/oz, Ag/oz, Pb/t, Zn/t) and multiplying by the metallurgical recovery. Since the metallurgical recovery varies according to deposit type, the metal equivalent factors are unique for each deposit (namely, Tailings Project, open pit and underground).

Metallurgical recoveries are based on historical production (2010-2016) as well as recent metallurgical test work and are applied to the Resource and Reserve calculated grades for each commodity. The Company is of the opinion that all the elements included in the metal equivalent calculations have a demonstrated potential to be recovered and sold. Mineral Hill has a CIL circuit, Cu flotation circuit, Pb flotation circuit and Zn flotation circuit to produce three different concentrates as well as gold dore.

$$\text{AuEq g/t} = (\text{Cu } C^{\text{Au}} * \text{Cu } \%) + (\text{Au } C^{\text{Au}} * \text{Au g/t}) + (\text{Ag } C^{\text{Au}} * \text{Ag g/t}) + (\text{Pb } C^{\text{Au}} * \text{Pb } \%) + (\text{Zn } C^{\text{Au}} * \text{Zn } \%)$$

Commodity	Unit	Price	Deposit	Commodity	Recovery (%)	AuEq Factor (C ^{Au})
Gold	US\$/oz	1,780	Tailings	Gold	60	0.60
Silver	US\$/oz	22		Silver	60	0.01
Copper	US\$/lb	4.12	Open Pit	Gold	64	0.64
Lead	US\$/lb	1.15		Silver	69	0.01
Zinc	US\$/lb	1.38	Underground	Gold	76	0.76
				Silver	64	0.01
				Copper	81	0.13
				Lead	79	0.04
				Zinc	60	0.03

Misima Gold Project – Resources & Reserves

Misima Resources & Reserves

Indicated Resource Inventory

Deposit	Mt	Au (g/t)	Ag (g/t)	C/O	Au (Moz)	Ag (Moz)
Umuna	93.5	0.78	4.3	0.3	2.4	13.1
Ewatinona	4.2	0.88	2.6	0.3	0.12	0.3
Cooktown Stockpile	-	-	-	-	-	-
TOTAL	97.7	0.79	4.3		2.5	13.4

Inferred Resource Inventory

Deposit	Mt	Au (g/t)	Ag (g/t)	C/O	Au (Moz)	Ag (Moz)
Umuna	64.1	0.58	3.8	0.3	1.2	7.5
Ewatinona	3.4	0.74	3.2	0.3	0.08	0.3
Cooktown Stockpile	3.8	0.65	7	0.5	0.1	0.9
TOTAL	71.3	0.59	3.8		1.4	8.7

Misima Resources Total

Deposit	Mt	Au (g/t)	Ag (g/t)	C/O	Au (Moz)	Ag (Moz)
Umuna	157.6	0.7	4.1	0.3	3.6	20.5
Ewatinona	7.6	0.81	2.8	0.3	0.2	0.7
Cooktown Stockpile	3.8	0.65	7	0.5	0.1	0.9
TOTAL	169	0.71	4.1	-	3.8	22.1

Misima Total Reserve Inventory (100 % probable)

Deposit	Mt	Au (g/t)	Ag (g/t)	Au (koz)	Ag (koz)
Umuna	41	0.79	4.6	1,816	10,612
Ewatinona	3.9	0.81	2.4	434	636
TOTAL	75.6	0.79	4.5	1,917	10,915



- Mineral Resources are reported inclusive of Ore Reserves
- See Competent Person details and year of original release on slide 24
- For full information of Mineral Resource and Ore Reserves see KSN announcements released 18 November 2021 and 6 June 2022
- Rounding to significant figures may cause minor computational discrepancies
- Misima Resource is comprised of Indicated and Inferred material
- Reserves are shown on an unrecovered basis