



RUMBLE
RESOURCES LTD



Emerging World Class Earraheedy Base Metals Discovery

121 Mining Investment London Conference – 22nd to 23rd November 2022

ASX: RTR

Rumble Value Drivers

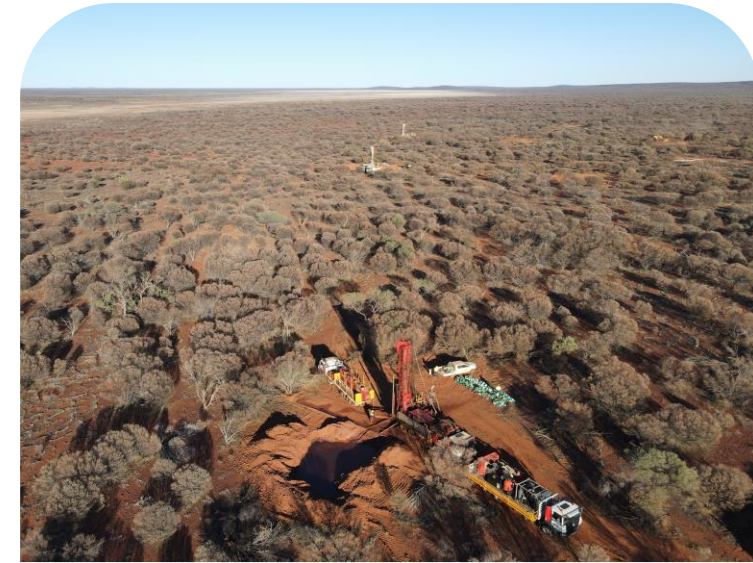


Earaheedy – Emerging World Class Base Metal Discovery

- **13km's of Zn-Pb mineralisation** – Zinc sulphide dominant, shallow, flat lying and open
- **Large scale, low cost open pit mining proposition** – World class mining jurisdiction
- **Initial Exploration Target 100-120Mt (3.5% - 4.5% Zn-Pb Sulphide)** – Giant category
- **High grade, well defined (>5% >8% Zn-Pb) domains** – Drilling focus
- **Provincial scale, Tier 1 potential** - Less than 15% of combined strike tested to date
- **Exceptional potential to increase to Super Giant category (>300Mt)** - Discoveries and extensions
- **Excellent Metallurgy** – High recoveries and marketable concentrates grade support a potential simple low Capex and Opex flowsheet
- **Maiden JORC Resource** - First half of 2023
- **Independent High-Grade Copper & Silver Deposit Potential** – Separate mineralised system to the Zn-Pb
- **Multi commodity cycle asset** – Potential multi decade mine life

Management – Actively Growing High Calibre Team

- **Successful track record of major discoveries and mine development** - Well funded & expanding management team



Corporate Overview



Capital Structure (RTR:ASX)

Shares On Issue	(m)	622.4
Unlisted Options ^{1,2,3}	(m)	23.6
Market Capitalisation ⁴	(A\$m)	158
Cash (30 September 2022)	(A\$m)	13.07
Debt	(A\$m)	Nil
Enterprise Value ⁴	(A\$m)	145

Notes:

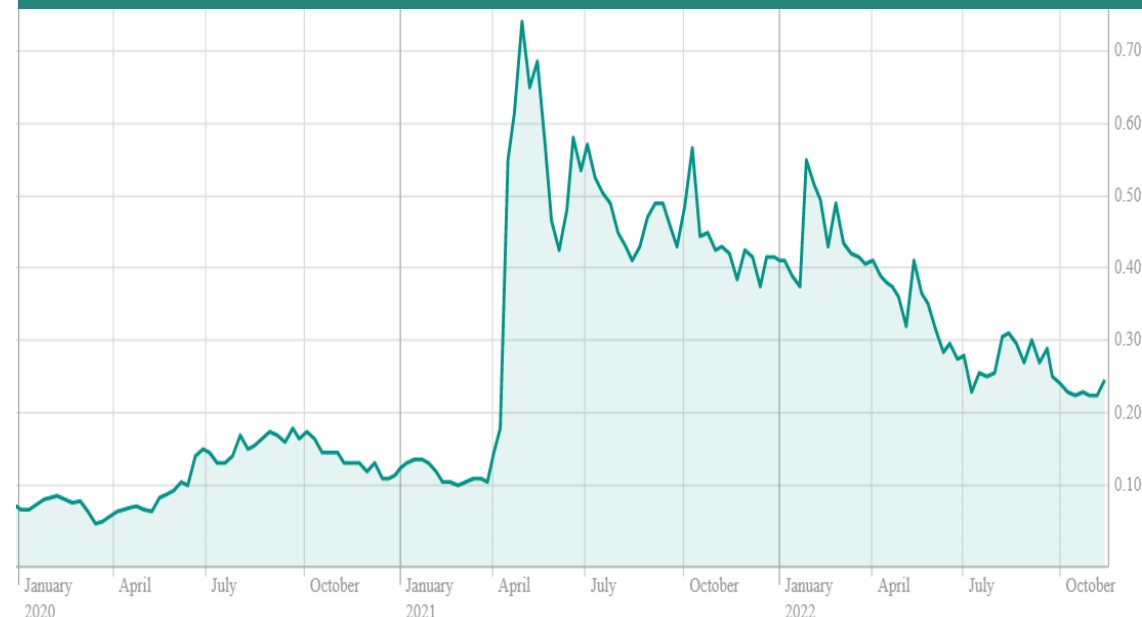
1. 4.6 million 15c Options (Various Expiry),
2. 4.0 million 58c Options (Various Expiry)
3. 15.0 million Performance Options Vesting 20c, 30c, 40c, 50c (vested) \$1 & \$2 (unvested)
4. As at 16th November 2022

Research Analyst Coverage

 **BELL POTTER**

Bradley Watson

Share Price Performance



Shareholders

Board and Management

9%

Top 20

31%

Building a Team to Deliver Earaaheedy



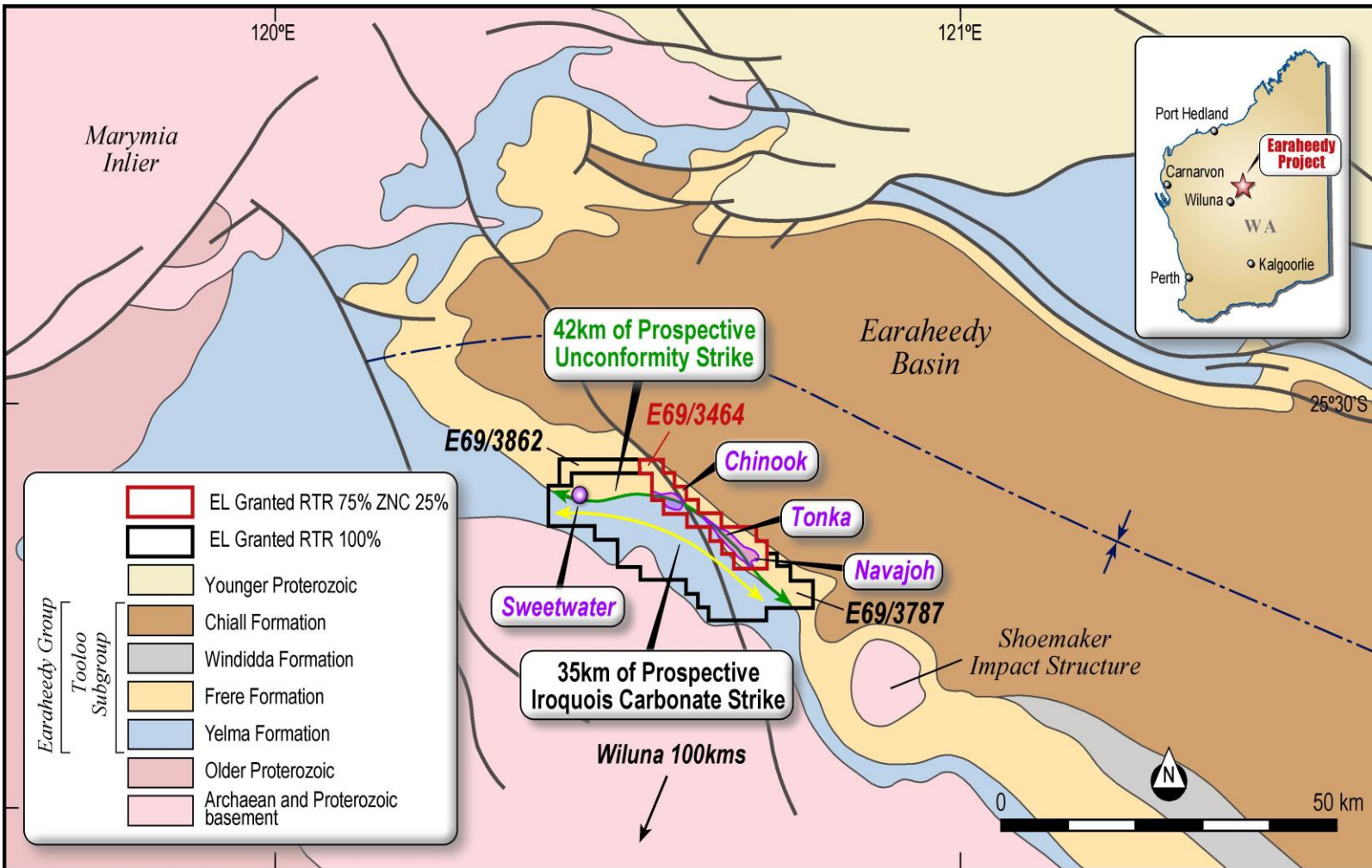
Board of Directors

Shane Sikora Managing Director	Peter Venn Non-Executive Director	Geoff Jones Non-Executive Director	Matthew Banks Non-Executive Director	Michael Smith Non-Executive Director
<ul style="list-style-type: none"> Founding member of Rumble appointed Managing Director in 2015 Over 20 years in business development, public relations, strategy, project acquisitions, capital raisings, financial partners and joint ventures 	<ul style="list-style-type: none"> Geologist with over 30 years experience Exploration and Development of 10+ mining operations across Africa and Australia Previously Chief Business Development Officer at Resolute Mining Limited 	<ul style="list-style-type: none"> Civil engineer with over 30 years experience Managing Director for GR Engineering Services Limited (ASX: GNG) since 2013 – global mine development & construction Previously Group Engineer for Resolute Mining, developed mines in Australia, Ghana and Tanzania. 	<ul style="list-style-type: none"> Founding member of Rumble Over 20 years specialising in marketing, public relations and corporate finance Executive director of Wildcat Resources (ASX: WC8) 	<ul style="list-style-type: none"> Founding member of Rumble Chartered Accountant with over 25 years experience Fellow of the Taxation Institute of Australia, member of ICAA's Forensic Accounting Special Interest Group

Senior Management

Brett Keillor Head of Technical	Mark Carder GM of Operations	Ben Jones Chief Geologist	Luke Timmermans Project Manager, Earaaheedy	Steven Wood Company Secretary / CFO
<ul style="list-style-type: none"> Geologist with over 30 years experience Senior roles and discoveries with Resolute Mining and Independence Group Twice recipient of the AMEC Award "Prospector Of The Year" for the Plutonic (5.5Moz Au), and Tropicana Gold (7.6M Oz Au) Deposits 	<ul style="list-style-type: none"> Geologist with over 20 years experience Held senior geological roles with Crescent Gold, BC Iron, Carrick Gold, Millennium Minerals and Lynas Corporation Specialises in resource modelling and economic assessment 	<ul style="list-style-type: none"> Geologist with over 20 years experience Senior roles at Evolution Mining, Independence Group, Jabiru Metals Ltd and AngloGold Ashanti Oversaw feasibility of 1Moz of Sunrise Dam Au Deposit, 7.6Moz Tropicana Au Deposit and Stockman 14mt Cu-Pb-Zn deposit 	<ul style="list-style-type: none"> Geologist with over 10 years experience Senior roles with Gold Fields, Red 5 and Essential Metals Co-lead team that increased King of the Hills Au deposit to over 3Moz and oversaw feasibility studies and mill construction 	<ul style="list-style-type: none"> Over 15 years experience in corporate advisory, company secretarial and financial management services Chartered Accountant, with experience in providing company secretarial and financial management services to both ASX and unlisted public and private companies

Major Zinc Dominant Sulphide Discovery



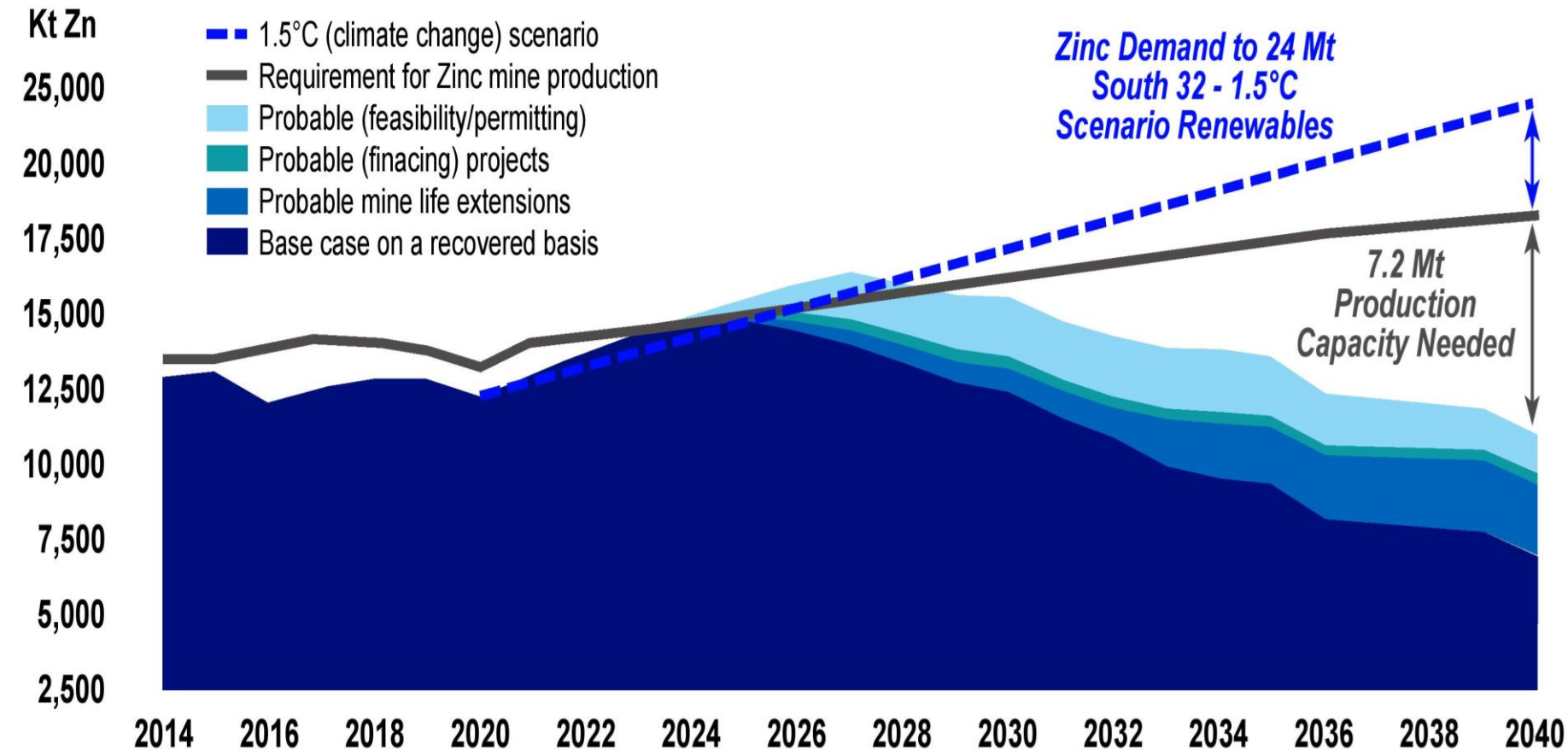
E69/3464 - 75% Rumble / 25% Zenith (ASX:ZNC) E69/3787 & E69/3862 - 100% Rumble

- Major sedimentary hosted base metal discovery in the Earaheedy Basin announced on 19 April 2021
- Chinook discovery hole intersected:
 - 34m @ 4.22% Zn+Pb from 66m, incl.
 - 15m @ 6.97% Zn+Pb, from 74m
- Exceptional exploration has uncovered an open 13x2km Zn-Pb-Ag-Cu metal budget
- Zinc Sulphide dominant (up to 10:1 Zn:Pb)
- Represents one of the largest Zn-Pb discoveries in recent history
- Multiple horizons – less than 15% combined strike drill tested highlighting provincial (Tier 1) scale potential
- Western Australia is a world class mining jurisdiction with access to major highways, power, rail, ports and workforce

Zinc Supply and Role in a Low-Carbon Economy



Zinc Operations and Project Pipeline

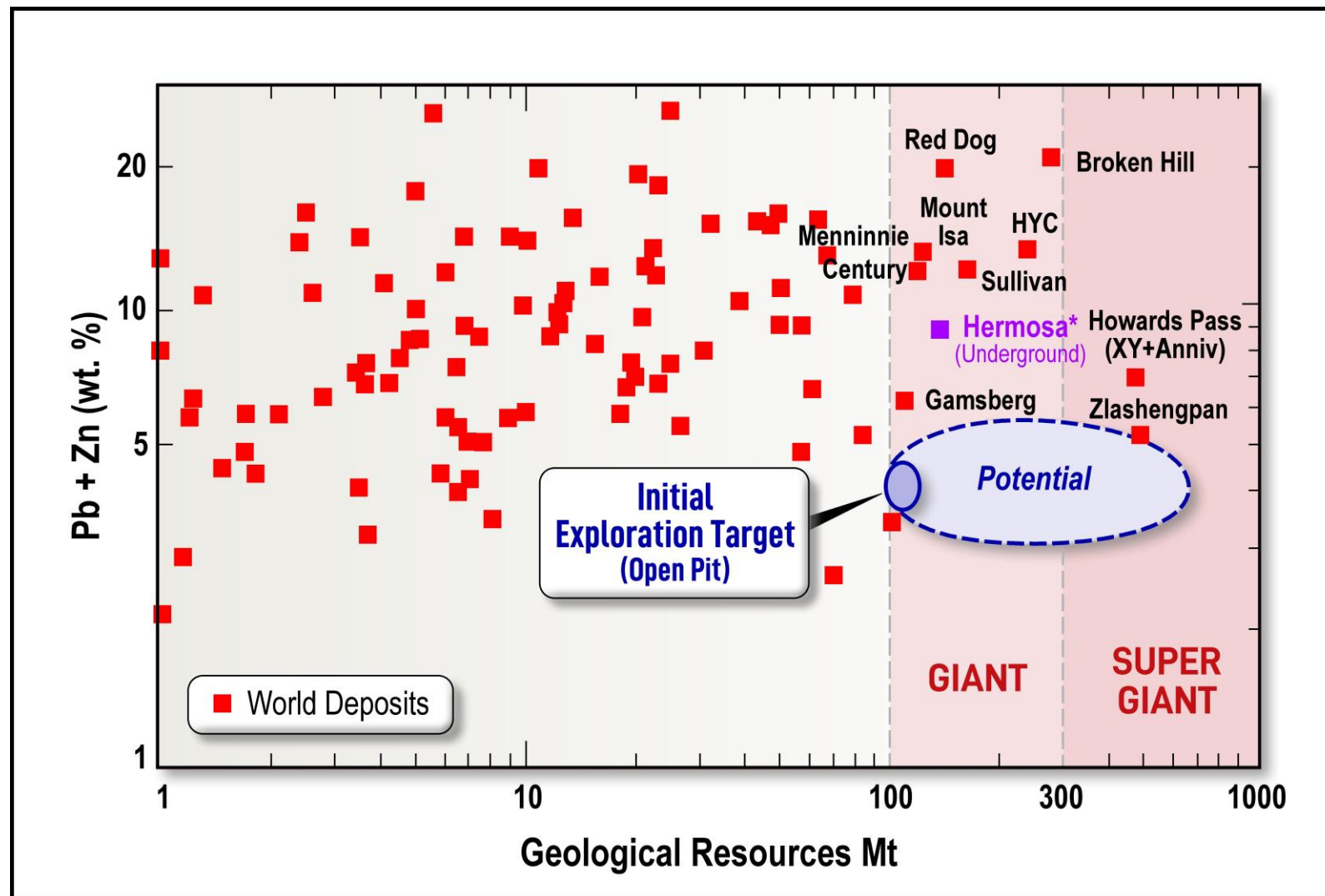


- Critical Mineral in USA
- Strong future role in renewable energy storage in solar, wind farms & batteries
- Galvanised steel is the preferred material for electric vehicles
- Supply - Expected to fall 3.5% pa to 2030 due to depleted mines
- Demand - Significant production increase required by 2040
- New mines are essential to meet demand

Earaheedy – Globally Significant Discovery



- Initial Exploration Target: ***Open pit proposition*** 100-120Mt (3.5% - 4.5% Zn-Pb Sulphide)*
- Globally only 8% of zinc is mined open pit - **significantly lower mining costs**
- Exceptional potential to **increase the Initial Exploration Target to Super Giant (>300Mt)**
- Few deposits that have comparable scale – **Globally significant discovery**
- 92% of zinc is mined underground – **Substantially higher mining costs**
- High potential to **discover new structurally hosted high-grade underground deposits**
- Recent Zn-Pb asset transaction:**
 - South 32 purchased Hermosa Deposit Arizona (**underground Zn-Pb mine**) for **US\$1.3bn (A\$2.0bn)***



Emerging World Class Base Metal System



Targets 1 & 2 - Unconformity Zn-Pb-Ag

- Flat lying Zn-Pb-Ag at Chinook, Tonka and Navajoh Prospects
- Only style currently drill testing

Target 3 - MVT Type Zn-Pb-Ag

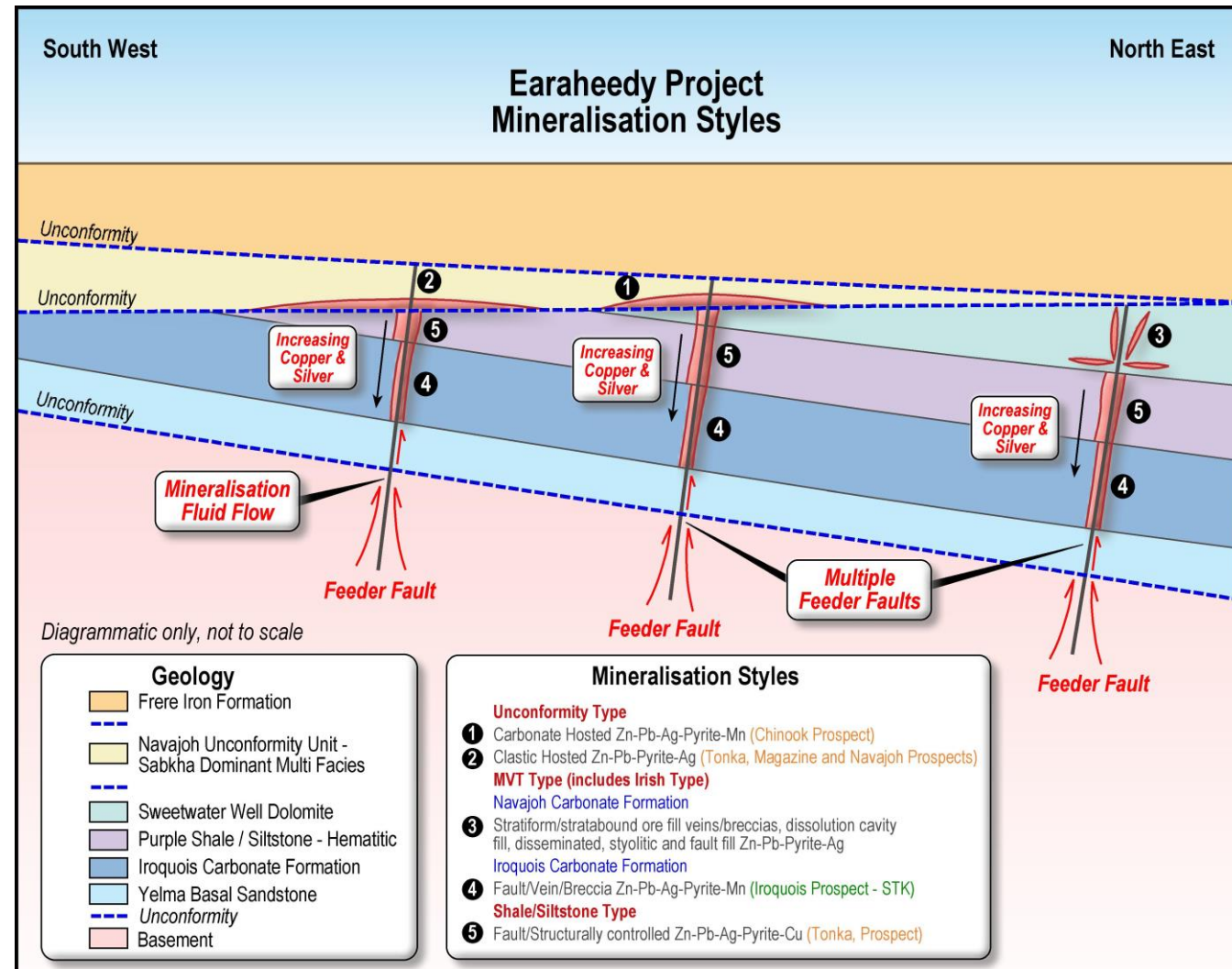
- Historic drilling intersected MVT Zn-Pb-Ag
- Remains to be tested

Target 4 & 5 - High Angle Fault/Feeder Zone Zn-Pb-Ag

- Strickland Metals intersected high-grade Zn-Pb in the Iroquois
- Rumble drilling intercepted Zn-Pb-Cu in the Purple Shale
- Remains to be tested

Target 6 - High Angle Fault/Structure Cu-Ag – (New)

- Rumble intercepted High Grade Cu-Ag in vertical fault/structures identified as a separate mineralising event to the Zn-Pb system (not depicted in model)
- Remains to be tested



Provincial Scale Discovery Potential

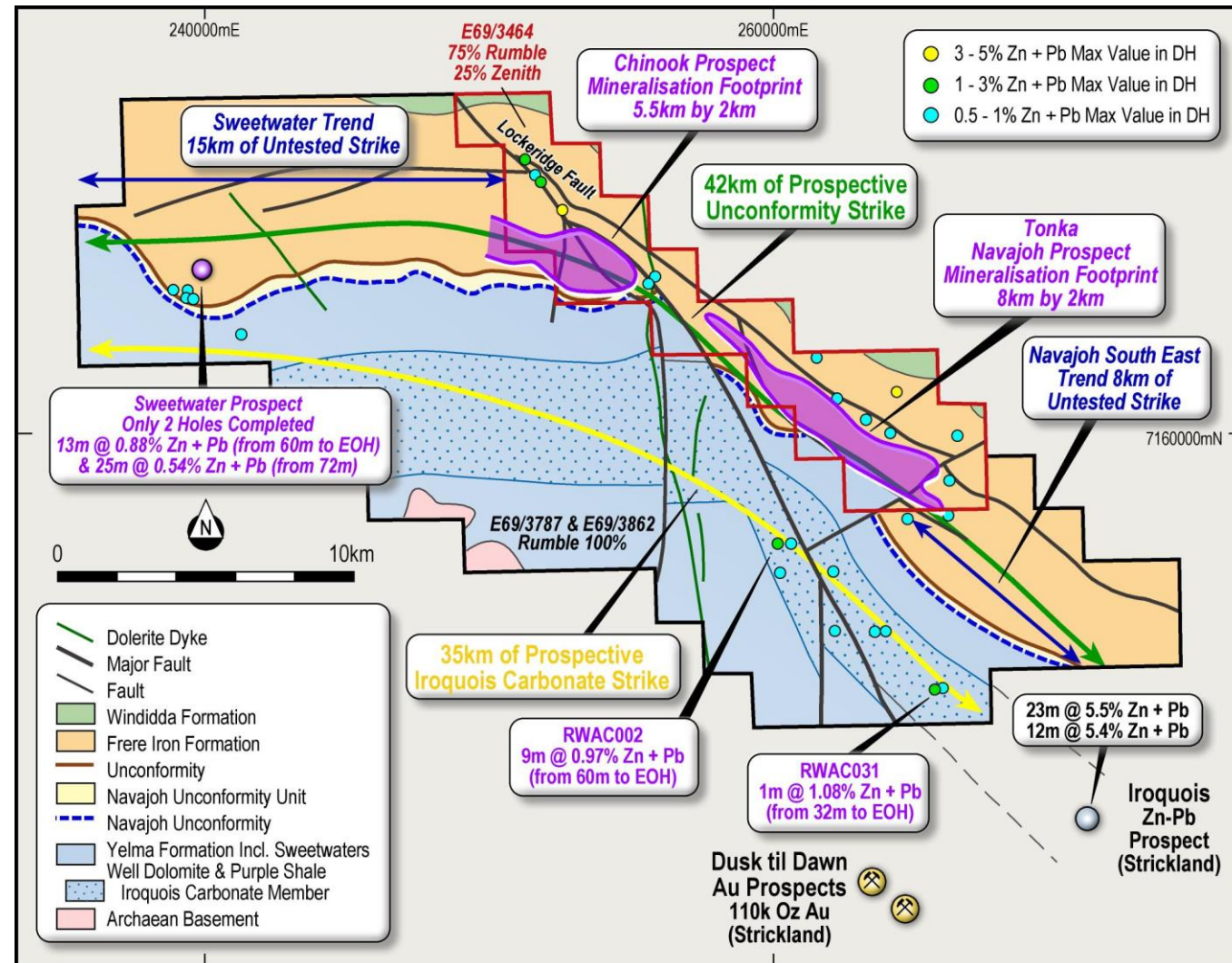


42km Prospective Unconformity (Targets 1-6) Strike

- **Chinook Prospect** mineralised footprint is **5.5km x 2km** - open in all directions
- **Tonka - Prospect** mineralised footprint is **8km x 2km** - open in all directions
- **15km of the Sweetwater Trend** – initial RC campaign commenced
- **8km of Navajoh Southeast Trend** – untested
- **High Angle High-Grade Fault/Feeder zones below the unconformity** – untested
- **High Angle High-Grade Fault/Structure Copper and Silver system** - untested

35km of Iroquois Carbonate Strike (Target 4)

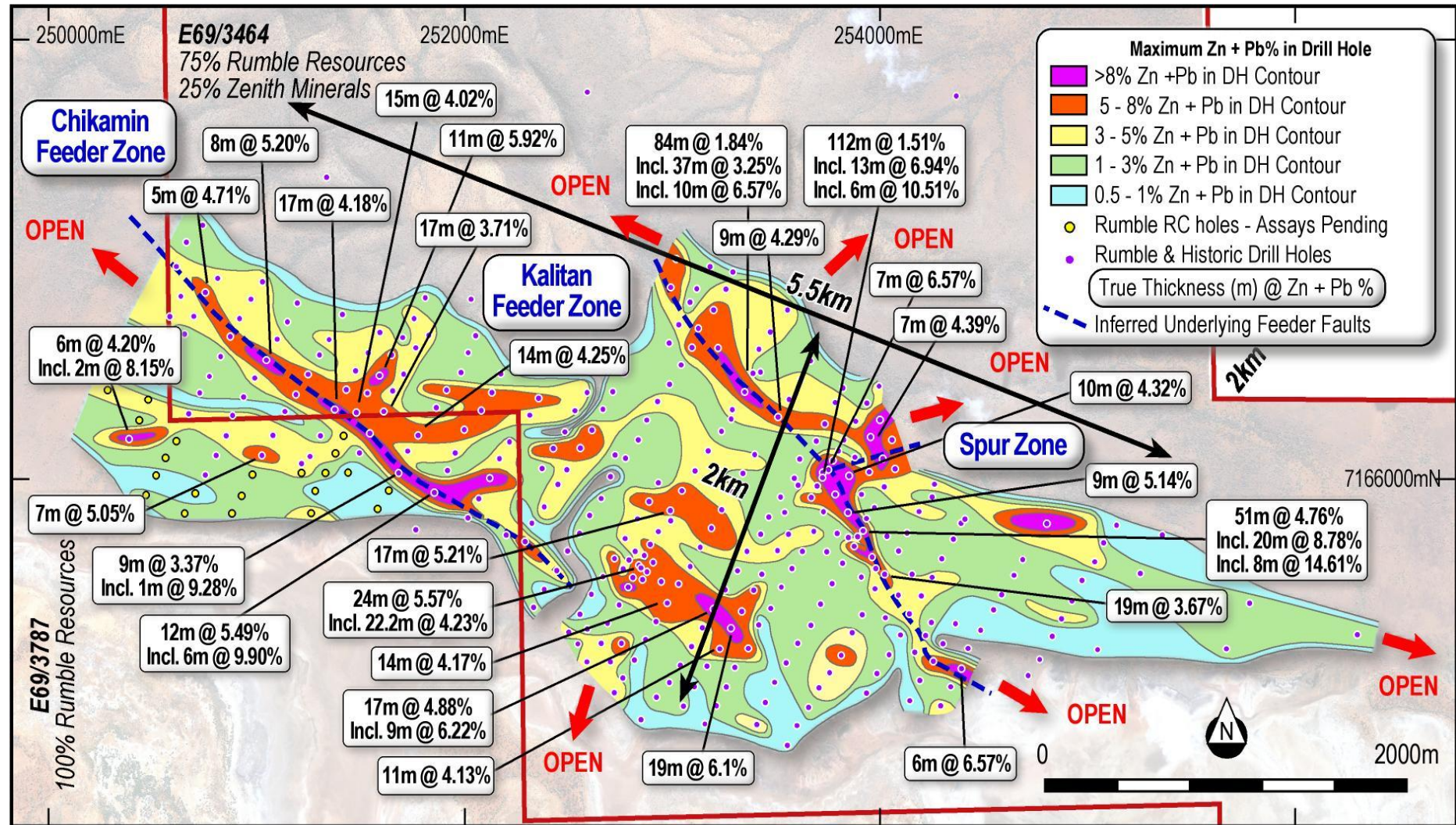
- Limited historic drilling intercepted Zn-Pb and Stricklands drill results along trend, **highlights potential for near surface discoveries** - untested



Chinook: Large Open Pit with Higher-Grade Domains



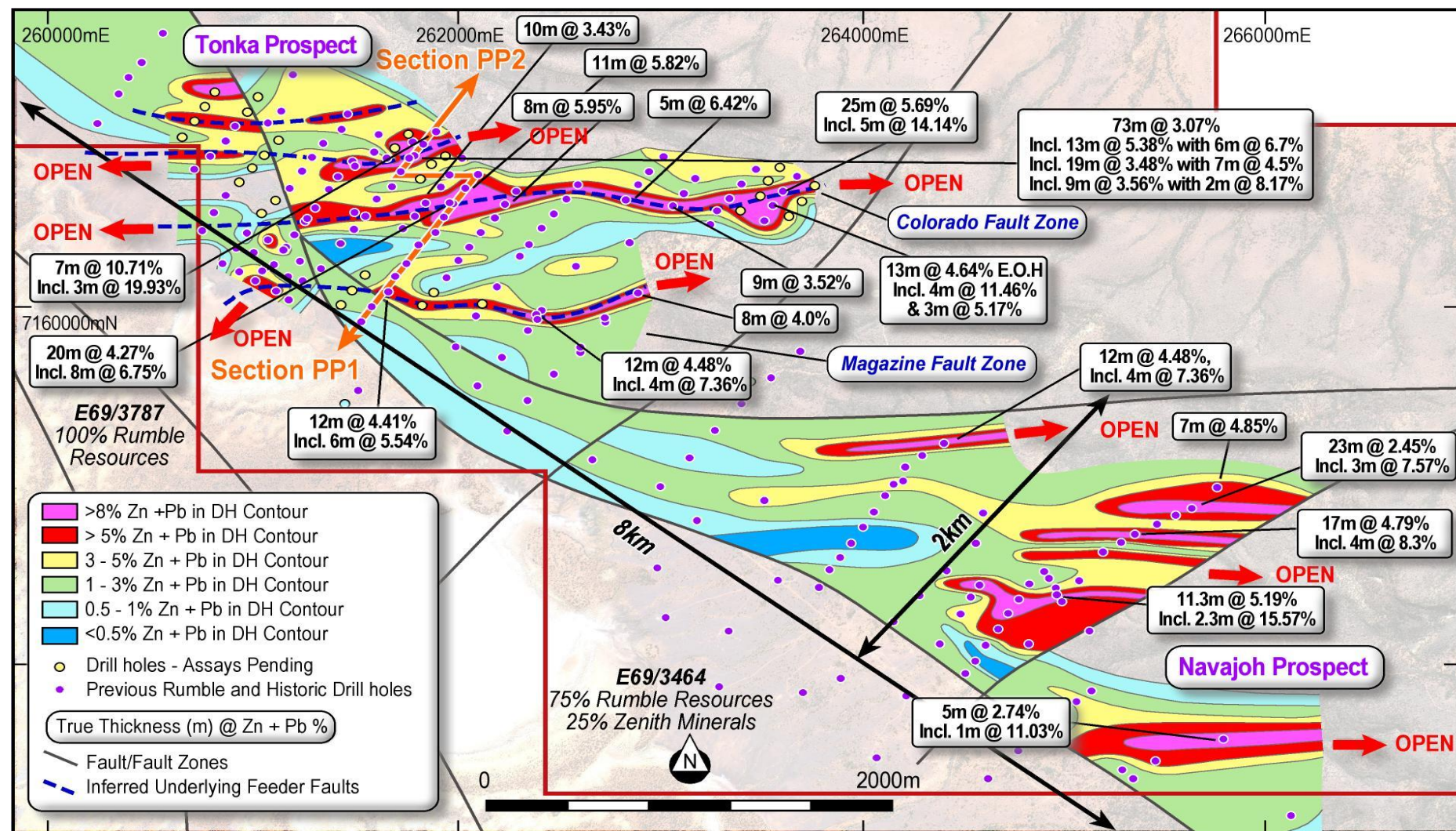
- Multiple east-west and northwest feeder structures hosting large **higher-grade (>5% >8%) Zn-Pb domains** – **Current drilling focus**
- Wide, shallow & flat lying **5.5km x 2km Zn-Pb mineralised footprint**
- Mineralisation remains **open** in all directions
- **Large scale open pit Proposition**
- **Strong grade continuity**
- **Zinc sulphide dominant** (approximately 3:1 Zn:Pb)
- **High metal content per vertical metre**



Tonka/Navajoh: Large Open Pit with Higher-Grade Domains



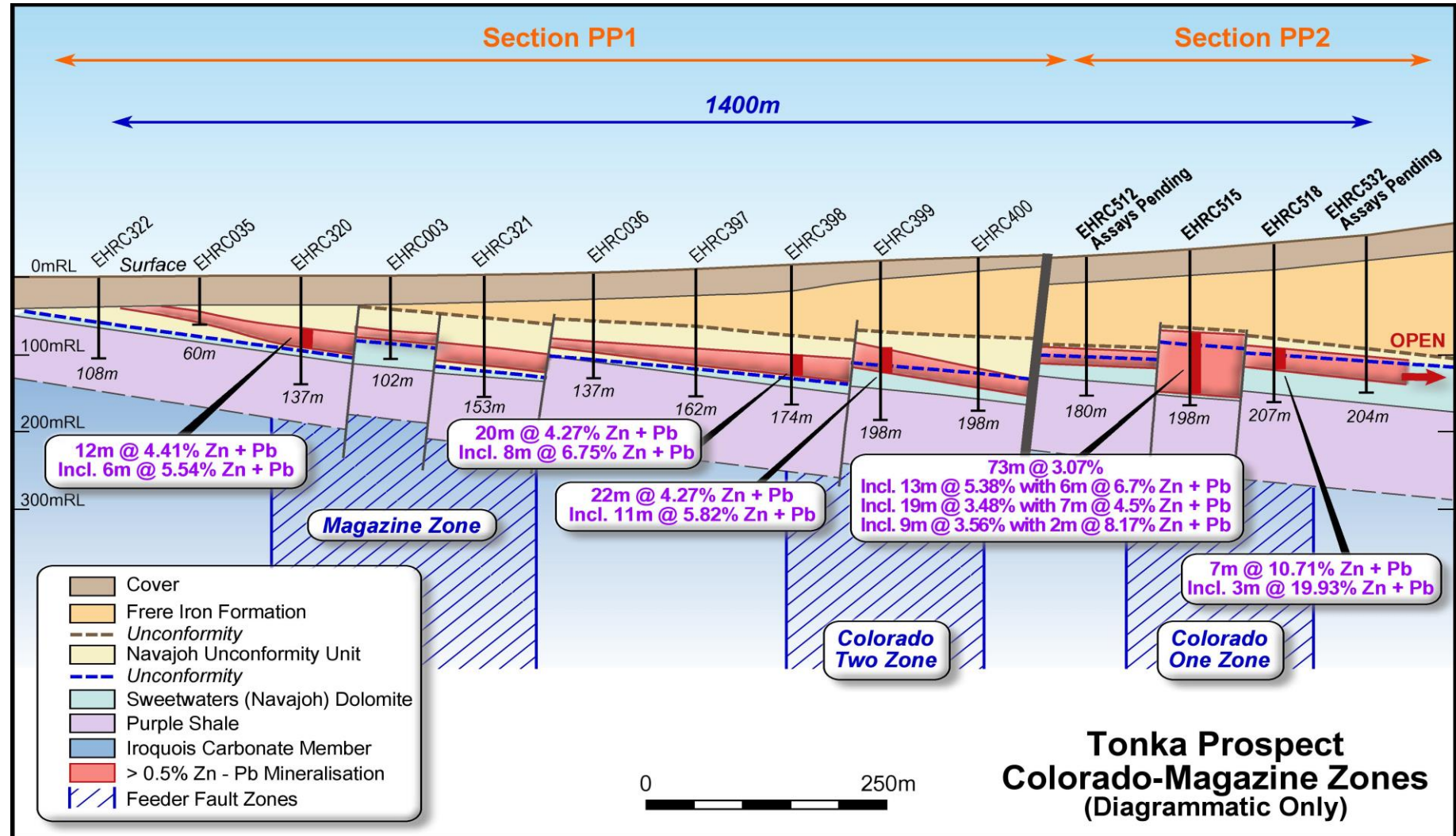
- Multiple east-west feeder structures hosting **large higher-grade (>5% >8%) Zn-Pb domains** up to 2.5km long– **Drilling focus**
- Wide, shallow & flat lying **8km x 2km Zn-Pb mineralised footprint**
- Mineralisation remains **open in all directions**
- **Large scale open pit Proposition**
- **Strong grade continuity**
- **Zinc Sulphide dominant** (Up to 10:1 Zn:Pb)
- **High metal content per vertical metre**



Tonka High-Grade Feeders, Shallow & Flat Lying



- Multiple higher grade (>5% >8%) domains associated with interpreted feeder zones – near term drill focus
- Shallow and flat lying mineralisation provides potential for **large scale open pit mine development**
- Potential free dig scenario – **Low-cost waste removal**
- **Zinc Sulphide dominant** (Up to 10:1 Zn:Pb)
- Dondip Zn-Pb **up to 2km - Open**
- **Significant widths and grade**



Metallurgy – A Highly Marketable Concentrate



- High zinc recoveries to 90% Zn in cleaner concentrates
- Coarse grind size (150 micron)
- Fast flotation with clean sulphide separation in site water
- Simple and conventional process flowsheet – low capex/opex potential
- Zinc concentrate to 59% Zn is highly marketable
- Higher end of global benchmark to current developers and producers
- Considerable potential for further metallurgical improvements (optimisation and beneficiation)

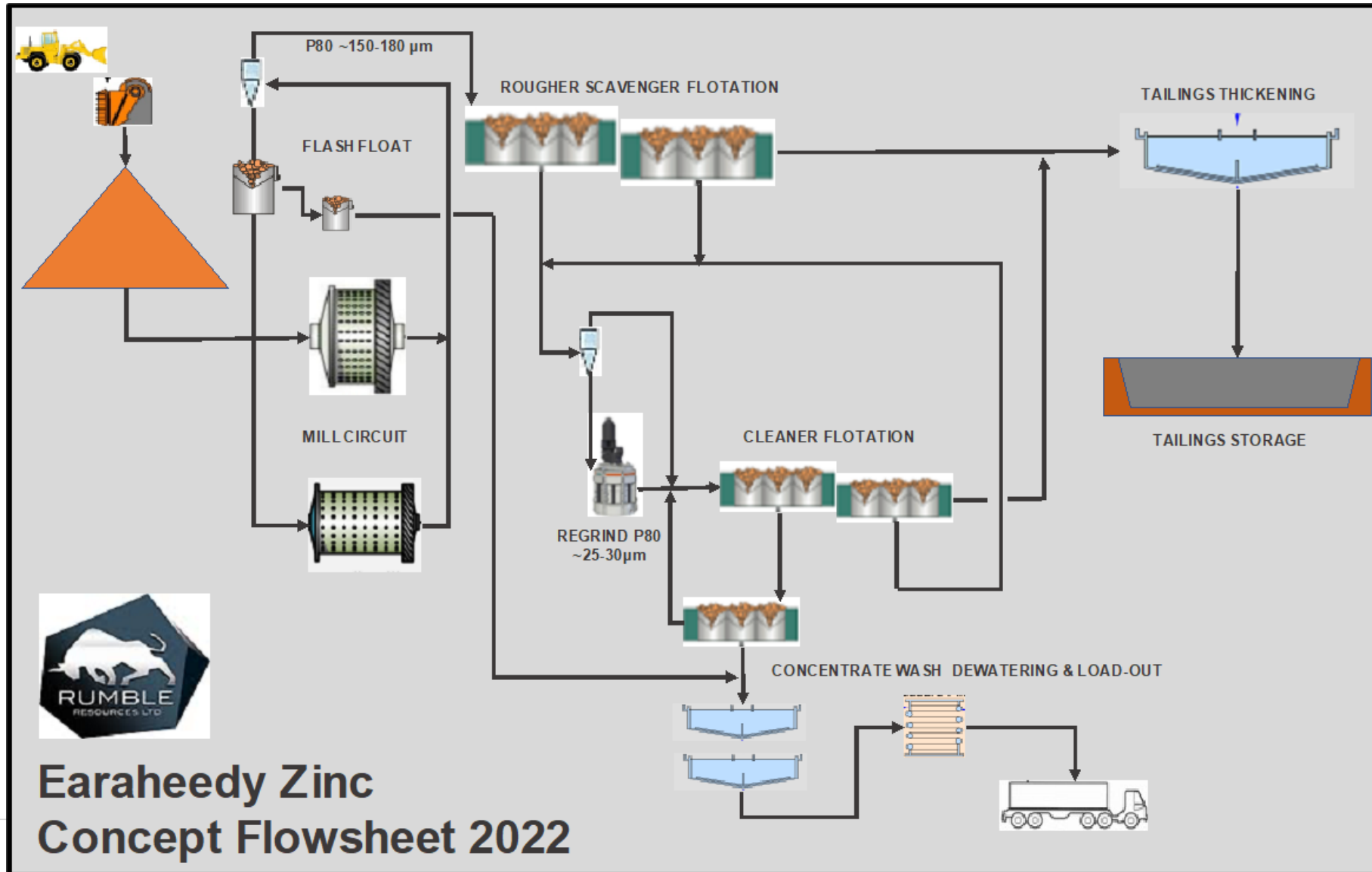
PROSPECT		CHINOOK	TONKA		Average Tonka	Average Combined
Composite		A - EHS001/002	B - EDH019	C- EDH027		
Host		Unconformity	Unconformity	Dolomite		
Feed Grades						
Zn	%	3.92	4.72	1.25		
Pb	%	2.33	0.49	0.15		
Rougher Recoveries						
Zn	%	86.1	89.6	96.7	93.2	90.8
Pb	%	63	82.3	82.1	82.2	75.7
Cleaner Recoveries						
Zn	%	78.6	84.2	89.6	86.9	84.1
Pb	%	41	72	70	70.8	60.8
Cleaner Concentrate Grades						
Zn	%	44.5	58.8	49.6	54.2	51.0
Pb	%	13.7	5.2	4.8	5.0	7.9
Zn+Pb	%	58.3	64.0	54.4	59.2	58.9

Table: Metallurgical Testwork Summary – incl Rougher Recoveries / Cleaner Recoveries and Concentrate Grades

Company	New Century	Glencore	MMG	MMG	Vedanta Zinc	Teck Resources	Rumble
Project	Century ¹	McArthur River ²	Rosebery ³	Dugald River ³	Gamsberg ⁴	Red Dog ⁵	Tonka
Zn Concentrate Grade	48%	47%	54%	50%	50%	55%	54%
Zn Recoveries	51%	N/A	82%	88%	N/A	86%	87%

Table: Tonka Earraheedy Zinc Recoveries and Zinc Concentrate vs Global Producers

Metallurgy – Conceptual Process Flowsheet



Potential DMS & Ore Sorting benefits



- Rumble is trialing DMS and Ore Sorting for the mineralisation outside the higher-grade Zn-Pb zones - benefits include;
 - Technique can increase on average ore grade by 2-5 times
 - Removes waste early which can significantly lower the CAPEX and OPEX
 - Flotation recoveries can generally be increased with higher head grade
 - Environment – Reduce tailings
 - Greater optionality and productivity

	Project	DMS & Ore Sorting Examples
1	Pering (Zn-Pb) South Africa	<ul style="list-style-type: none">• Resource 50Mt @ 1.1% Zn and 0.3% Pb – MVT Type Open Pit Deposit• DMS delivered 4x upgrade (3.9% Zn and 1.1% Pb)• DMS rejected 80% of waste
2	Sabre's Border (Zn-Pb) Namibia	<ul style="list-style-type: none">• Resource 16.2Mt @ 1.53% Zn and 0.59% Pb – MVT Type Open Pit Deposit• DMS delivered 8 x Upgrade (12.5% Zn and 6.3% Pb)• DMS rejected 83% of waste
3	Sorby Hills (Pb-Ag) Western Australia	<ul style="list-style-type: none">• Resource 13.5Mt @ 3.6% Pb and 40g/t Ag (~2.6% ZnEq) MVT Type Open Pit Deposit• DMS delivered 2.5 x Upgrade of lower grade material• DMS rejected 70% of waste

Analogy: Pering Open Pit Mine, South Africa



- Pering Zinc-Lead discovery made in 1978 by BHP Billiton
- 70km Southwest of Vryburg, Northwest region of South Africa
- Mined by a joint venture comprising Shell & BHP Billiton
- **20.5Mt mined at 2.6% Zn & 0.6% Pb over 17 years**
- 1.2Mtpa mined from two open pits to 120m
- **Zn prices averaged US\$0.60/lb between 1988 – 2005, in 2022 US\$1.40/lb**

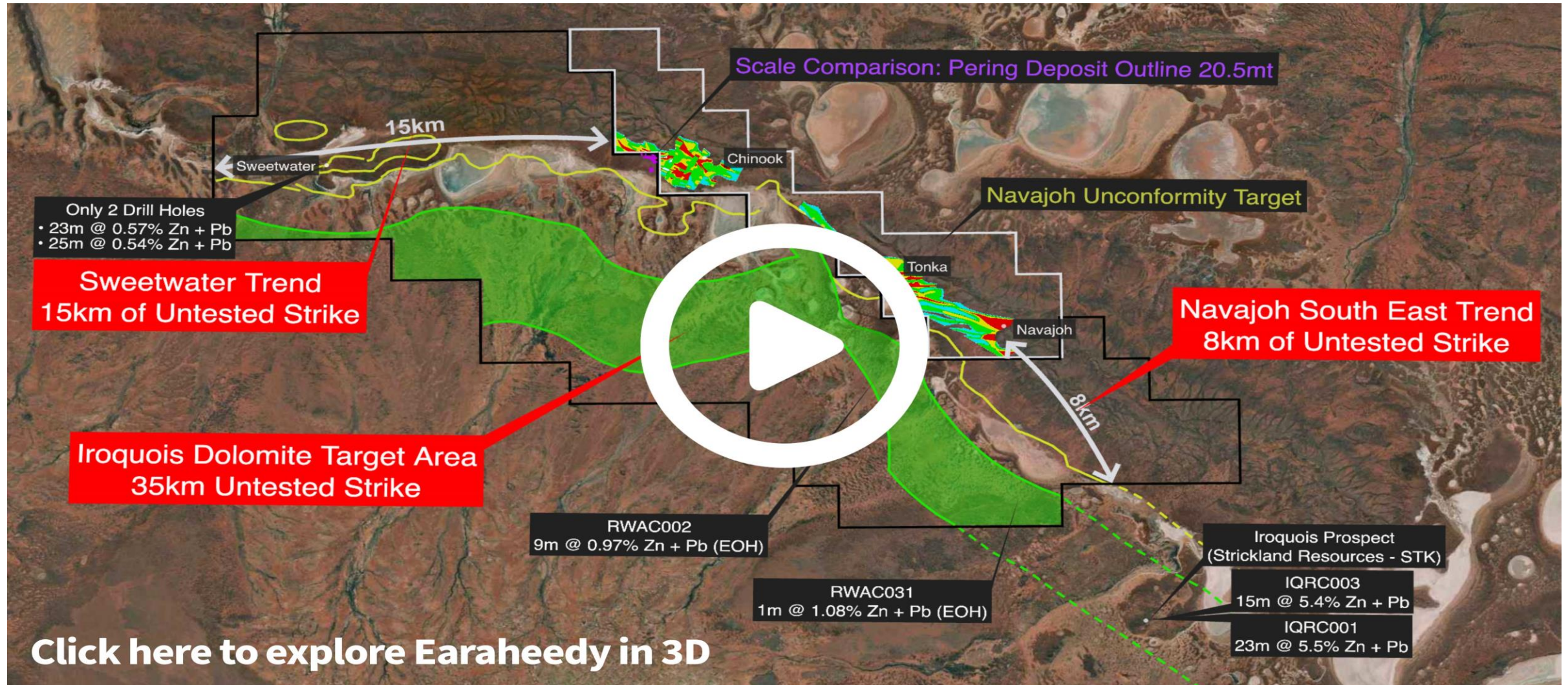
Recent DMS processing enhancements at Pering

- Successful preconcentration DMS studies were completed on current reserves (51.3Mt @ 1.1%Zn 0.3%Pb) in 2010 by Mintek, South Africa for PBM Pty Ltd
- DMS PEA Study produced:
 - **3-4 times increase to 4.2% Zn and 1.0% Pb**
 - **80% rejection of waste**

Pering Zn-Pb Open Pit Mine, South Africa



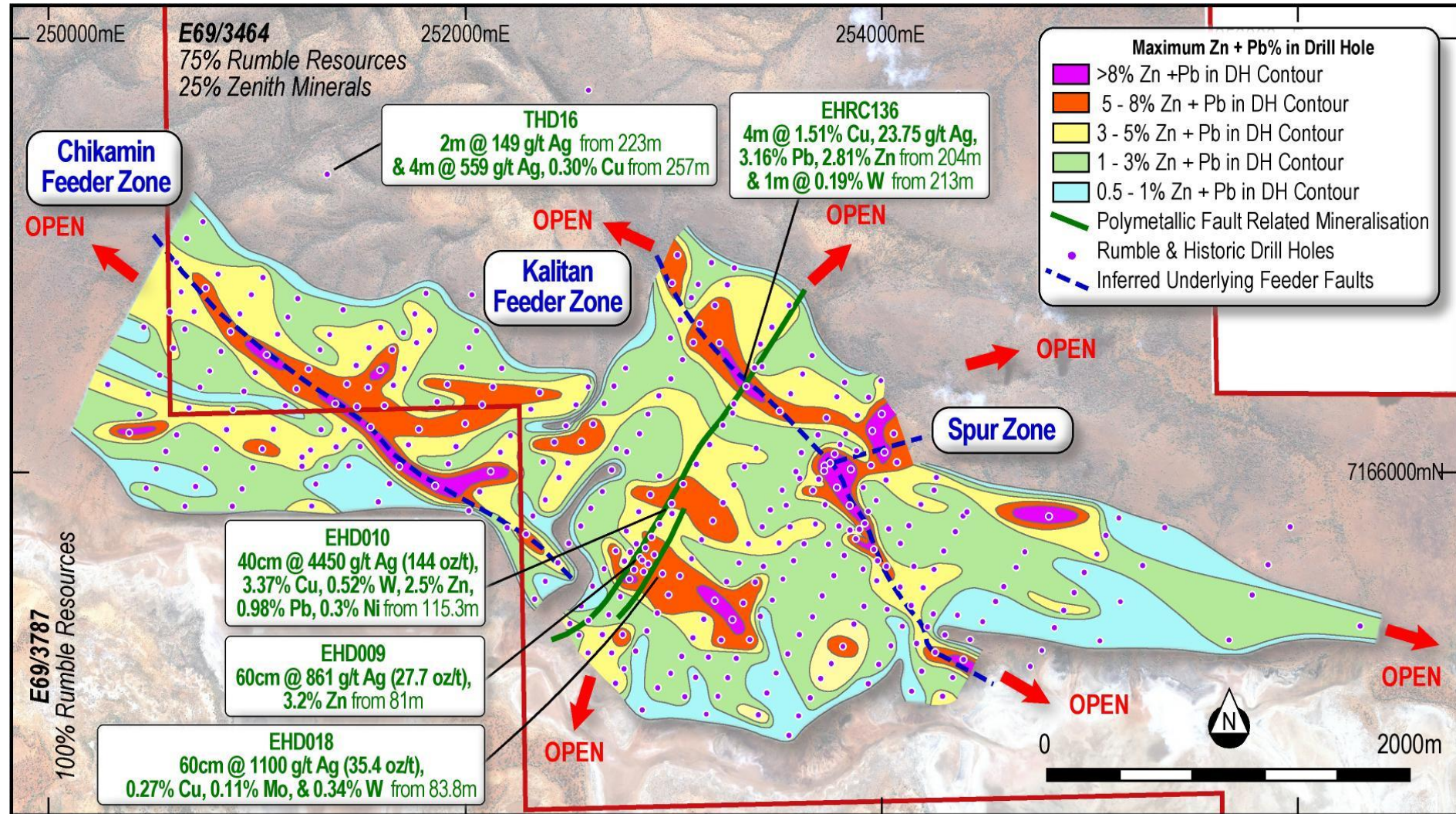
Interactive 3D fly through



Chinook: High-Grade Copper and Silver



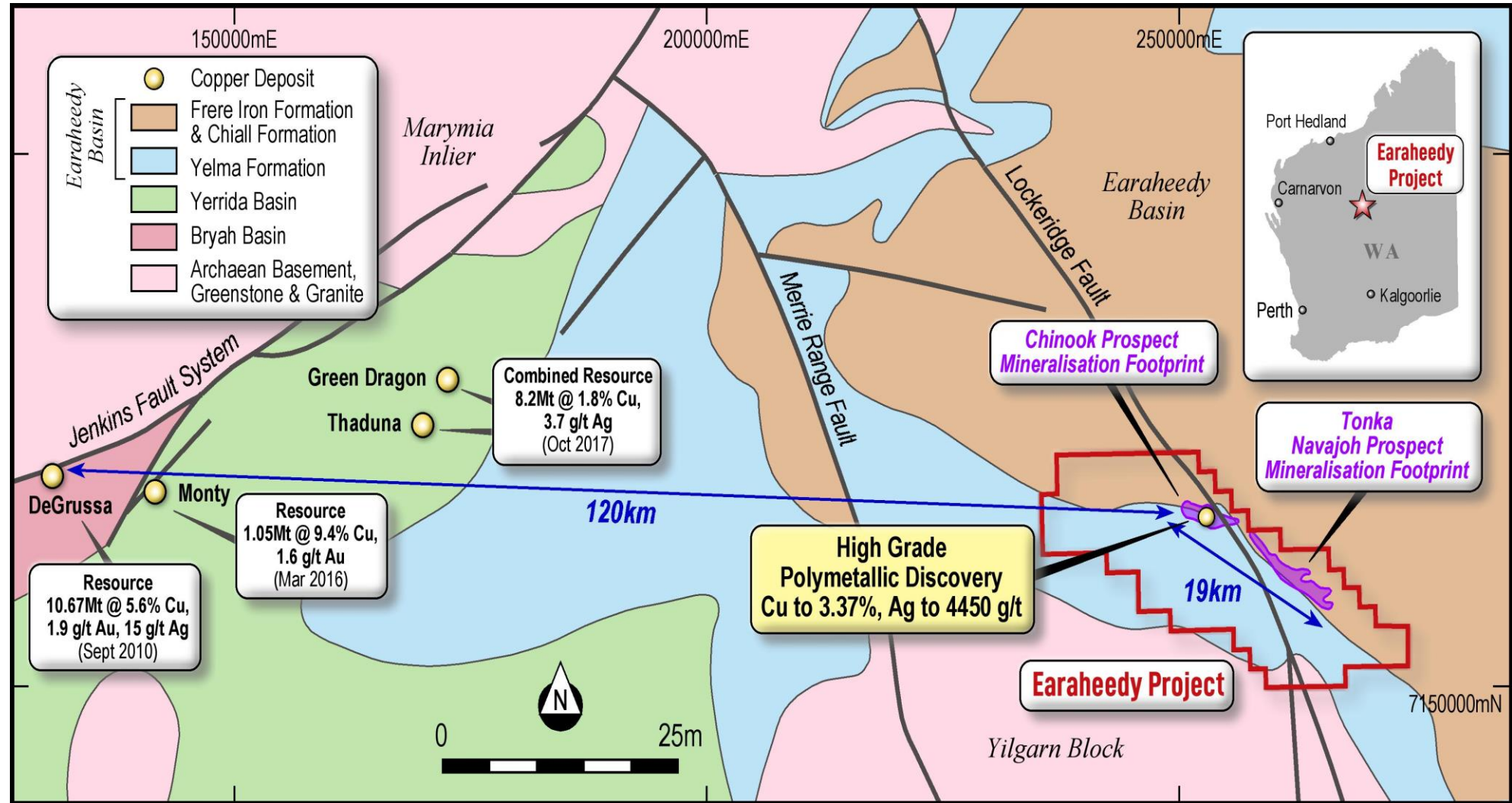
- Drilling targeting flat lying Zinc-Lead mineralisation discovered vertical fault/structure related **high-grade copper and silver**, with associated molybdenum, tungsten and nickel in a newly recognised polymetallic system
- The polymetallic system is a **separate mineralising event** to the unconformity and MVT style Zinc-Lead mineralisation
- Only 4 intersections over 2km strike intercepted to date due to the **orientation of the system being vertical and not targeted by current drilling**



Earaheedy Project with Regional Copper Deposits



- Significant potential for independent copper & silver dominant deposits throughout the Earraheedy Project yet to be drill targeted and tested
- Major copper deposits including the high-grade Degruassa Cu-Au-Ag VMS system occur in older Yerrida and Bryah Basins to the west (120km) of the Earraheedy project



Sustainability



- Diversity in the workforce
- Utilising the local community stakeholders and suppliers to create a positive contribution to the region
- Recognise and engagement with traditional owners



- Growing employment opportunities
- Incorporate best practice environmental principles
- Sponsor Murlpirrmarra Connection a not-for-profit organisation that provide Aboriginal youth in Wiluna support throughout secondary school

Near Term Catalysts at Earaheedy



1. 50,000m Drilling Program in 2022

- Target (>5% >8% Zn+Pb) high-grade feeder structures at the Tonka-Navajoh Prospects completed – Assays pending
- Target (>5% >8% Zn+Pb) high-grade feeder structures at the Chinook west extension along Sweetwater Trend – Drilling ongoing with assays pending

2. Maiden JORC (2012) Mineral Resource Estimate in first half of 2023

3. Drill Program Planned for 2023

- Target high-grade feeder structures at Chinook, Tonka and Navajoh
- Target high-grade feeder structures along the untested 15km Sweetwater Trend, 8km Navajoh Southeast Trend and 35km Iroquois Carbonate Unit
- Target the newly discovered high-grade copper-silver dominant polymetallic fault system

4. Further flotation optimisation and testing beneficiation techniques in 2023



Photo: Head of Technical Brett Keillor studying mineralisation

Appendix



Earaheedy Discovery: Initial Exploration Target



Earaheedy Project Initial Exploration Target

Range	Tonnes	Grade
Lower	100,000,000	3.5% Zn + Pb Sulphide
Upper	120,000,000	4.5% Zn + Pb Sulphide

Notes:

Rumble's initial first stage exploration target at the Earaheedy Project is between 100 to 120 million tonnes at a grade ranging between 3.5% Zn-Pb to 4.5% Zn-Pb Sulphide. The exploration target is at a shallow depth (120m), and over 40kms of prospective strike (completely open) has been defined within the Earaheedy Project. The potential quantity and grade of the exploration target is conceptual in nature, there has been insufficient exploration to estimate a Mineral Resource and it is uncertain if further exploration will result in the estimation of a Mineral Resource. The exploration target, being conceptual in nature, takes no account of geological complexity, possible mining method or metallurgical recovery factors. The exploration target has been estimated in order to provide an assessment of the potential for large-scale Zn-Pb deposits within the Earaheedy Project. The exploration target has been prepared and reported in accordance with the 2012 edition of the JORC Code.

The potential quantity and grade of the exploration target is conceptual in nature. There has been insufficient exploration to estimate a Mineral Resource and it is uncertain if further exploration will result in the estimation of a Mineral Resource. The exploration target is based on the current geological understanding of the mineralisation geometry, continuity of mineralisation and regional geology. This understanding is provided by an extensive drill hole database, regional mapping, coupled with understanding of the host stratigraphic sequence.

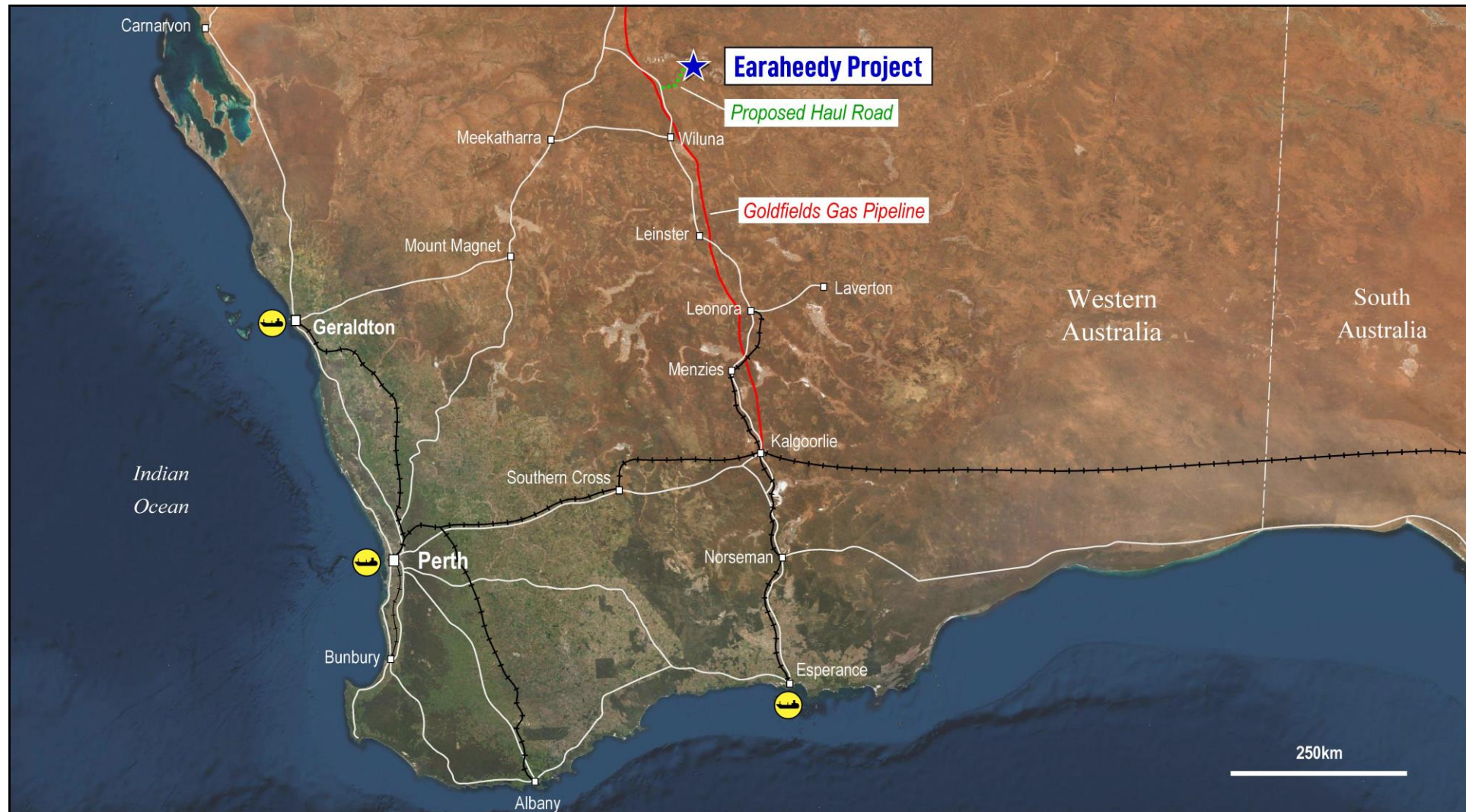
Included in the data on which this exploration target has been prepared are results from over 50,000m of drilling completed by Rumble. Historic drilling includes sixty-four (64) holes completed within the project area (E69/3464) by previous explorers (refer historical exploration results in previous ASX announcements dated 5 February 2019 and 12 October 2017, 23rd January 2020 which continue to apply and have not materially changed).

The Company intends to test the exploration target with drilling and this further drilling is expected to extend over approximately 12 months. Grade ranges have been either estimated or assigned from lower and upper grades of mineralisation received in drilling results. A classification is not applicable for an exploration target

Some of the considerations in respect of the estimation of the exploration target include:

- Drilling results have demonstrated strong continuity of shallow, flat lying mineralisation;
- Over 42km's of prospective strike and open
- Minimum 600m width (based on shallow 7.5° and shallow depth to 120m, based on drilling results.
- True width (thickness) of mineralisation up to 51 metres received in drilling results; and
- Specific gravity (SG) of 2.5 (world average SG of sandstone – not accounting for metal).

Earaheedy – Infrastructure in World Class Jurisdiction



Rumble's Pipeline of Projects Strategy



Project Pipeline Strategy

- Generate a pipeline of projects at various stages of development
- Critically review each project to ensure capable of world class discoveries
- Negotiate low-cost upfront optionality
- De-risked due to multiple avenues to discovery

Targeting Valuable Discovery

- Fast track low-cost drill target generation
- Drill first order targets for discovery
- Technical team discovered multiple deposits that turned into mines

Project Development

- Establish a Board and Management experienced in developing discoveries into mines

Gold Resources

Western Queen Au Project

- Unmined open pit and underground resources of 163,268oz @ 2.42 g/t Au
- Significant high-grade intersections include:
6m @ 34.24 g/t Au,
6.3m @ 36.09 g/t Au,
7m @ 60.6 g/t Au & 6m @ 37.34 g/t Au
- Scope to significantly expand the resources at depth and discover new deposits along the 35kms of WQ shear zone strike to be drill tested
- High-Grade System Targets:
Multiple high-grade gold open pit and underground deposits

Classification	Tonnes (t)	Au g/t	Contained Metal
Ind.	1,069,218	1.95	67,145
Inf.	1,027,954	2.91	96,123
Total	2,097,172	2.42	163,268
Cut-Off g/t		O/C @ 0.5	UG @ 1.5

Five Advanced Projects, Large Scale Systems Discovered - Tier 1 Potential

Munarra Gully Au-Cu-Ag-Zn Project

- Amaryllis Prospect - Large Scale Au-Cu-Ag-Zn system discovered with intercepts:
57m @ 0.85 g/t Au, 0.27% Cu, 4.2 g/t Ag and 10m @ 2.88 g/t Au, 0.54% Cu, 7.5 g/t Ag
- Over 2.3km's of Au-Cu-Ag up to 50m wide and open in all directions
- Over 15km's of strike untested
- Large Scale Targets:
Large Scale Chibougamau Au-Cu-Ag shear vein style type deposits

Earaheedy Zn-Pb-Ag-Cu Project

- **Major Zn-Pb-Ag-Cu Discovery**
- Chinook Prospect 5km's x 2km's Zn-Pb-Ag-Cu - Open in all directions
- Tonka and Navajoh Prospects 8km's x 2km's Zn-Pb-Ag - Open in all directions
- Over 42km's of prospective strike - completely open
- Multiple High-grade Zn-Pb Feeders defined and inferred throughout project
- Tier 1 Targets:
Multiple large-scale sedimentary hosted flat lying Zinc-Lead-Silver Sulphide & MTV Type - Copper-Zinc-Lead-Silver Deposits
First Stage Exploration Target:
100-120Mt 3.5-4.5% Zn-Pb Open pit depths

Braeside Zn-Pb-Cu-Ag-Au-V Project

- 60km's of mineralisation
- 30 Priority Cu-Au-Zn-Pb-Ag targets generated
- High-grade Pb-Zn-Ag breccia pipes discovered
- Broad Cu with Zn-Pb Intercepted - Potential new VMS Province
- Large Scale System Targets:
Large scale porphyry related base metal and VMS deposits

Warroo Cu-Zn-Pb-Ag-Au-U-Pt Project

- Warroo Hill member prospect - 18km's of strike with extensive shallow copper to 3.43% and Zinc to 26% remains untested
- Potential New VMS Province
- Large Scale Targets:
Large scale VMS type deposits

Wardawarra Ni-Cu-Co-Ta-Nb-Sn-Li Project

- 20km x 2km Ultramafic sequence - Prospective for Ni-Cu-Co-PGE - 19.8m @ 0.88% Ni & 0.1% Co
- Large Pegmatite swarm over 12kms of strike - Up to 5.32% Li2O
- 35km of Western Queen High-grade Gold Shear Zone
- Large Scale Targets:
Large Scale Ni-Cu-Co, Ta-Nb-Sn (Li-C-Rb-REE Potential) and Au deposits

Two JV Projects in World Class Jurisdiction - Tier 1 Targets

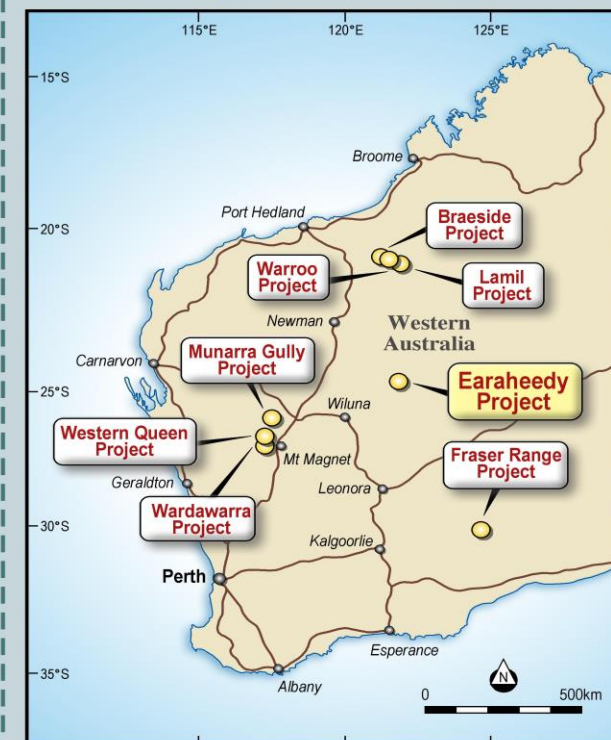
Lamil Cu-Au Project

- \$10M farm out with AIC Mines (ASX:A1M)
- 26 Au-Cu targets located between world class Nifty & Telfer mines in Paterson Province
- Key target is Lamil Dome which has similar dome size, trend & inferred host rocks to the nearby Telfer Au-Cu Dome deposit (32Moz, 1Mt Cu resource)
- Tier 1 Targets:
Large scale Au-Cu deposits

Fraser Range Ni-Cu-Au Project

- JV with major IGO Limited (ASX: IGO) on 2 Projects
- Two high-grade Au discoveries 16m @ 6.69 g/t Au & 6m @ 9.15 g/t Au
- Magnetic low/gravity high targets & multiple EM conductors over a 12km Cu-Zn trend - 30km along strike from Mawsons Ni-Cu Discovery
- Tier 1 Targets:
Large scale Ni-Cu and Au deposits

All Projects in Western Australia



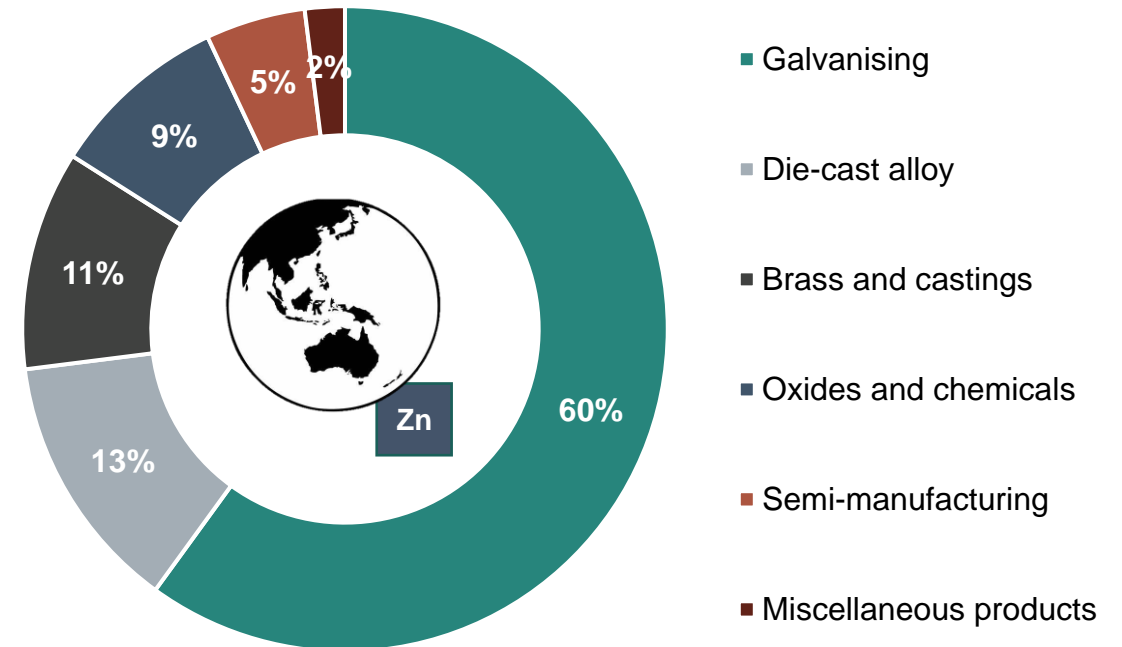
Global Zinc Uses



Overview

- Zinc is one of the most versatile and essential materials known to mankind. It is the fourth most used metal in the world behind iron, aluminum, and copper.
- The primary use of zinc is in the galvanizing process, which protects iron and steel from rusting. Zinc coatings play a key role in public transportation and infrastructure by extending the life of steel used in bridge rails and support beams, railway tracks, and public transportation hubs and terminals.
- Additionally, zinc can be alloyed with other metals and used for die-casting into shapes such as door handles, alloyed with copper to make brass, and alloyed with copper and sometimes other metals to make some types of bronze, like architectural bronze or commercial bronze.
- Furthermore, zinc also has applications in energy storage. Zinc-carbon batteries were the first commercial dry batteries, providing a higher energy density at a lower cost than previously available cells.
- Due to its growing role in energy storage and its superior ability to protect metals against corrosion, zinc remains an essential material for the future.

Uses



Source: Natural Resources Canada

Green Metal - Zinc's Role in a Low-Carbon Economy



Zinc is 100% recyclable – it can be recovered and reused without a loss in quality

Offshore wind turbines require a zinc coating to handle extreme environmental conditions

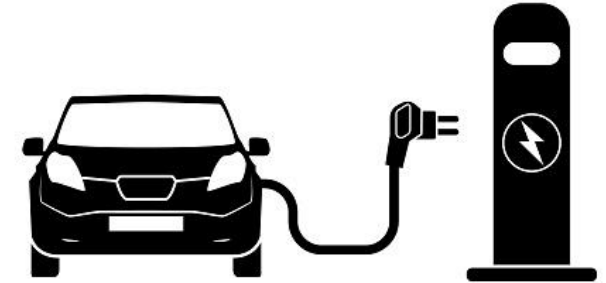


A 10 MWh offshore wind turbine required 4 tonnes of zinc



Zinc coatings protect solar panel fixtures and prevent rust

A 100 megawatt hour (MWh) solar power park requires 240 tonnes of zinc

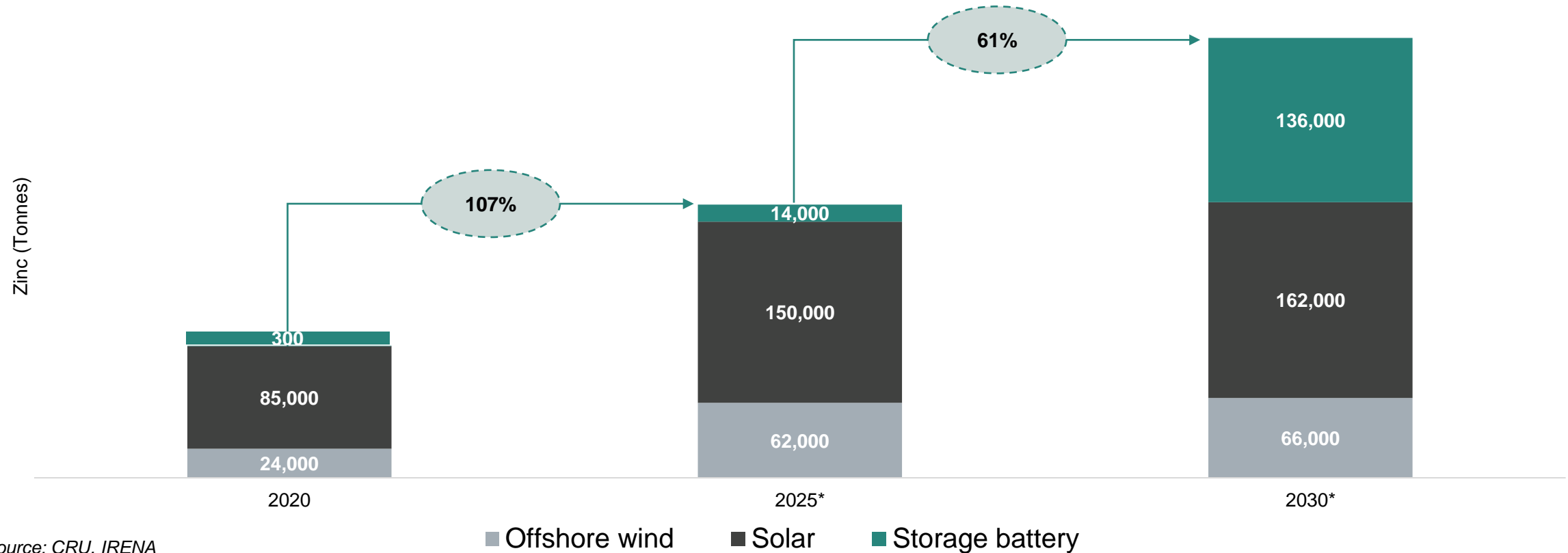


- 1 Zinc is a key ingredient in battery technology that enables carbon emission reduction*
- 2 Zinc-ion batteries are safer than lithium-ion batteries as they use water-based chemistry (avoiding fires)*
- 3 Galvanised steel requires zinc and is the preferred material used by EV manufacturers*

Zinc Uses in Renewables



Accelerated investment and adoption of renewable energy is leading to growing zinc demand



Source: CRU, IRENA

* Projected



Company	New Century	Glencore	MMG	Vedanta Zinc	Teck	Rumble
Project	Century	Mcarthur River	Dugald River	Gamsberg	Red Dog	Tonka Earahedy
% Unless otherwise stated						
Fe	3	5.9	11	8.9	5.0	6.6
Mn	<0.15	<0.01	2	2.6	<0.01	<0.2
SiO ₂	5	4.6	3.5	2	4.5	1.35
Cd	0.12	0.12	<0.1	<0.1	0.4	TBD
As	<0.01	0.2	0.02	<0.01	0.02	<0.1
Hg	<50 ppm	40 ppm	15 ppm	22 ppm	80ppm	TBD
Pb	8	4.6	0.2	0.1	3.8	5
S	28.5	30	31	29.4	31.7	33.7
Ag	150 ppm	130ppm	80 ppm	2 ppm	150ppm	TBD

Table: Tonka Earahedy Low Penalty Elements vs Global Producers (orange- penalties apply)

Company	Project	Status	Source
MMG Limited	Roseberry	Production	Fourth Quarter Production Report 2021 www.mmg.com/wp-content/uploads/2022/01/e_2022-01-24_4QTR-Production-Report.pdf
MMG Limited	Dugal River	Production	Fourth Quarter Production Report 2021 www.mmg.com/wp-content/uploads/2022/01/e_2022-01-24_4QTR-Production-Report.pdf
New Century Resources Limited	Century	Production	ASX Announcement: Quarterly Activities Report Dec-21 (27-Jan-2022)
Nexa Resources SA	Vazante	Production	Information Relating to Mineral Properties 17-Mar-22 https://minedocs.com/22/Nexa-Mining-Report-03172022.pdf
Glencore plc	Mcarthur River	Production	Wood Mackenzie, August 2018
Vedanta Zinc	Gamsberg	Production	Wood Mackenzie, August 2018
Teck Resources Ltd	Red Dog	Production	Q2 2022 FINANCIAL REPORT - https://www.teck.com/media/q3-2022-quarterly.pdf
Note: Peer specifications are indicative only and may not represent current specifications.			
Table: Peer Comparison Source Information			

Table: Peer Comparison Source Information from slide 13

Contacts



Shane Sikora
Managing Director

info@rumbleresources.com.au
+61 8 6555 3980

www.rumbleresources.com.au

Level 1, 16 Ord Street,
West Perth, WA 6005



[https://www.linkedin.com/company/
rumble-resources-ltd](https://www.linkedin.com/company/rumble-resources-ltd)



<https://twitter.com/RumbleResources>

Disclaimer



Disclaimer

This presentation has been prepared by Rumble Resources Limited (Rumble or the Company). It contains general information about the Company's activities current as at the date of the presentation. The information is provided in summary form and does not purport to be complete. This presentation is not to be distributed (nor taken to have been distributed) to any persons in any jurisdictions to whom an offer or solicitation to buy shares in the Company would be unlawful. Any recipient of the presentation should observe any such restrictions on the distribution of this presentation and warrants to the Company that the receipt of the presentation is not unlawful. It should not be considered as an offer or invitation to subscribe for or purchase any securities in the Company or as an inducement to make an offer or invitation with respect to those securities. No agreement to subscribe for securities in the Company will be entered into on the basis of this presentation or any information, opinions or conclusions expressed in the course of this presentation. This presentation is not a prospectus, product disclosure document or other offering document under Australian law or under any other law. It has been prepared for information purposes only. This presentation contains general summary information and does not take into account the investment objectives, financial situation and particular needs of any individual investor. It is not financial product advice and investors should obtain their own independent advice from qualified financial advisors having regard to their objectives, financial situation and needs. Rumble nor any of their related bodies corporate is licensed to provide financial product advice. This presentation and information, opinions or conclusions expressed in the course of this presentation contains forecasts and forward looking information. Such forecasts, projections and information are not a guarantee of future performance, involve unknown risks and uncertainties. Actual results and developments will almost certainly differ materially from those expressed or implied. There are a number of risks, both specific to Rumble, and of a general nature which may affect the future operating and financial performance of Rumble, and the value of an investment in Rumble including and not limited to title risk, renewal risk, economic conditions, stock market fluctuations, manganese demand and price movements, timing of access to infrastructure, timing of environmental approvals, regulatory risks, operational risks, reliance on key personnel, reserve estimations, native title risks, foreign currency fluctuations, and mining development, construction and commissioning risk.

You should not act or refrain from acting in reliance on this presentation, or any information, opinions or conclusions expressed in the course of this presentation. This presentation does not purport to be all inclusive or to contain all information which its recipients may require in order to make an informed assessment of the prospects of Rumble. You should conduct your own investigation and perform your own analysis in order to satisfy yourself as to the accuracy and completeness of the information, statements and opinions contained in this presentation before making any investment decision. Recipients of this presentation must undertake their own due diligence and make their own assumptions in respect of the information contained in this presentation and should obtain independent professional advice before making any decision based on the information. No representation or warranty, express or implied, is made in relation to the fairness, accuracy or completeness of the information, opinions and conclusions expressed in the course of this presentation. To the maximum extent permitted by law, no representation, warranty or undertaking, express or implied, is made and, to the maximum extent permitted by law, no responsibility or liability is accepted by the Company or any of its officers, employees, agents or consultant or any other person as to the adequacy, accuracy, completeness or reasonableness of the information in this presentation. To the maximum extent permitted by law, no responsibility for any errors or omissions from this presentation whether arising out of negligence or otherwise is accepted. An investment in the shares of the Company is to be considered highly speculative. The exploration targets or conceptual exploration targets in this presentation or expressed during the course of this presentation are subject to completion of the necessary feasibility studies, permitting and execution of all necessary infrastructure agreements. This presentation and information, opinions or conclusions expressed in the course of this presentation should be read in conjunction with Rumble's other periodic and continuous disclosure announcements lodged with the ASX, which are available on the Rumble website. They involve risk and uncertainties that could cause actual results to differ from estimated results. Forward-looking statements include, but are not limited to, statements concerning the Company's exploration programme, outlook and target sizes. They include statements preceded by words such as "potential", "target", "scheduled", "planned", "estimate", "possible", "future", "prospective" and similar expressions.

Competent Person Statement:

The information in this presentation that relates to Exploration Targets is based on and fairly represents information compiled or reviewed by Mr Brett Keillor, who is a Member of the Australian Institute of Mining and Metallurgy. Mr Keillor has sufficient experience, which is relevant to the style of mineralisation and type of deposit under consideration and to activities undertaken, to qualify as a Competent Person as defined in the 2012 Edition of the "Australasian Code for Reporting of Exploration Results, Mineral Resources and Ore Reserves". Mr Keillor is the Head of Technical of Rumble. Mr Keillor consents to the inclusion in the presentation of the matters based on his information in the form and context in which it appears.

The Exploration Results referenced in this presentation were first announced by the Company in accordance with ASX Listing Rule 5.7 in its announcements dated 17th November, 3rd November 2022, 29th September 2022, 30th August 2022, 23rd August 2022, 18th July 2022, 26 May 2022, 9 March 2022, 21 February 2022, 7 February 2022, 31 January 2022, 21 December 2021, 13 December 2021, 18 November 2021, 10 November 2021, 18 October 2021, 8 July 2021, 2 June 2021, 19 April 2021, 23 February 2021, 17 February 2021, 15 February 2021, 3 February 2021, 28 January 2021, 4 November 2020, 6 October 2020, 20 May 2020, 4 May 2020, 24 April 2020, 17 February 2020, 11 February 2020, 23 January 2020, 26 November 2019, 8 November 2019, 21 November 2019, 21 October 2019, 1 October 2019, 23 August 2019, 22 August 2019, 6 August 2019, 11 July 2019, 1 July 2019, 4 April 2019, 12 March 2019, 12 February 2019, 6 February 2019, 17 December 2018, 27 November 2018, 30 August 2018 and 9 August 2018.

The Mineral Resource estimate for the Western Queen Project referenced in this presentation was first announced by the Company in accordance with ASX Listing Rule 5.8 in its announcement dated 2 August 2021.

Rumble is not aware of any new information or data that materially affects the information included in the relevant market announcements described above and, in the case of the Mineral Resource estimate, that all material assumptions and technical parameters underpinning the estimate in the relevant market announcement continue to apply and have not materially changed.

Reference Source:

Slide 6 - Zinc Supply and Role in a Low-Carbon Economy - South 32 Analysis & Wood Mackenzie – 17-1-22 -): https://www.south32.net/docs/default-source/exchange-releases/hermosa-project-update-presentation43ee85d99c0a4238ab2df792d986f3d3.pdf?sfvrsn=24bde72d_4 Slide 7 - Putting Earahedy Scale in Perspective - 911 Metallurgist - <https://www.911metallurgist.com/blog/SEDEX-sedimentary-exhalative-ore-deposits> and International Lead and Zinc Study Group (ILZSG) and South 32 deal of Hermosa: https://www.south32.net/docs/default-source/exchange-releases/south32-to-acquire-arizona-mining-in-agreed-all-cash-offera845e39935e04d52bba69904f73c039a.pdf?sfvrsn=d6597986_4 . Slide 14 – Potential DMS & Ore Sorting benefits – Perring Mine economic statement 31st December 2010, Sabre Resources ASX announcement 24th January 2012 - <https://www.asx.com.au/asxpdf/20120124/pdf/423xbbgpfxhy4.pdf> , Boab Metals Asx announcements 19th November 2021 <https://boabmetals.com/wp-content/uploads/2021/11/20211119-2303039-DFS-Met-Testwork-results.pdf> & 25th August 2020 - https://boabmetals.com/wp-content/uploads/2021/02/20200825_Sorby_Hills_PFS_Delivers_Outstanding_Results_final.pdf