



Managing Director Presentation to Annual General Meeting

22 November 2022

Important Information

The information contained in this Presentation or subsequently provided to the Recipient of this Presentation whether orally or in writing by or on behalf of Norwest Energy NL ("NWE") or their respective employees, agents or consultants ("Information") is provided to the Recipients on the terms and conditions set out in this notice.

The Presentation contains reference to certain intentions, expectations and plans of NWE. Those intentions, expectations and plans may or may not be achieved. They are based on certain assumptions which may not be met or on which views may differ. The performance and operations of NWE may be influenced by a number of factors, many of which are outside the control of NWE. No representation or warranty, express or implied, is made by NWE or any of its respective directors, officers, employees, advisers or agents, that any intentions, expectations or plans will be achieved either totally or partially or that any particular rate of return will be achieved.

The Presentation does not purport to contain all the information that any existing or prospective investor may require. It is not intended to be a complete or accurate statement of material information. In all cases, before acting in reliance on any information, the Recipient should conduct its own investigation and analysis in relation to the business opportunity and should check the accuracy, reliability and completeness of the Information and obtain independent and specific advice from appropriate professional advisers.

The Recipient should not treat the contents of this Presentation as advice relating to legal, taxation or investment matters and should consult its own advisers. NWE and its advisers take no responsibility for the contents of this Presentation.

NWE makes no representation or warranty (express or implied) as to the accuracy, reliability or completeness of the information. NWE and its respective directors, employees, agents and consultants shall have no liability (including liability to any person by reason of negligence or negligent misstatement) for any statements, opinions, information or matters (express or implied) arising out of, contained in or derived from, or for any omissions from the Presentation, except liability under statute that cannot be excluded.

NWE is not aware of any new information or data that materially affects the information included in any market announcement referenced throughout the Presentation and that all material assumptions and technical parameters underpinning the estimates in the relevant market announcement continue to apply and have not materially changed.

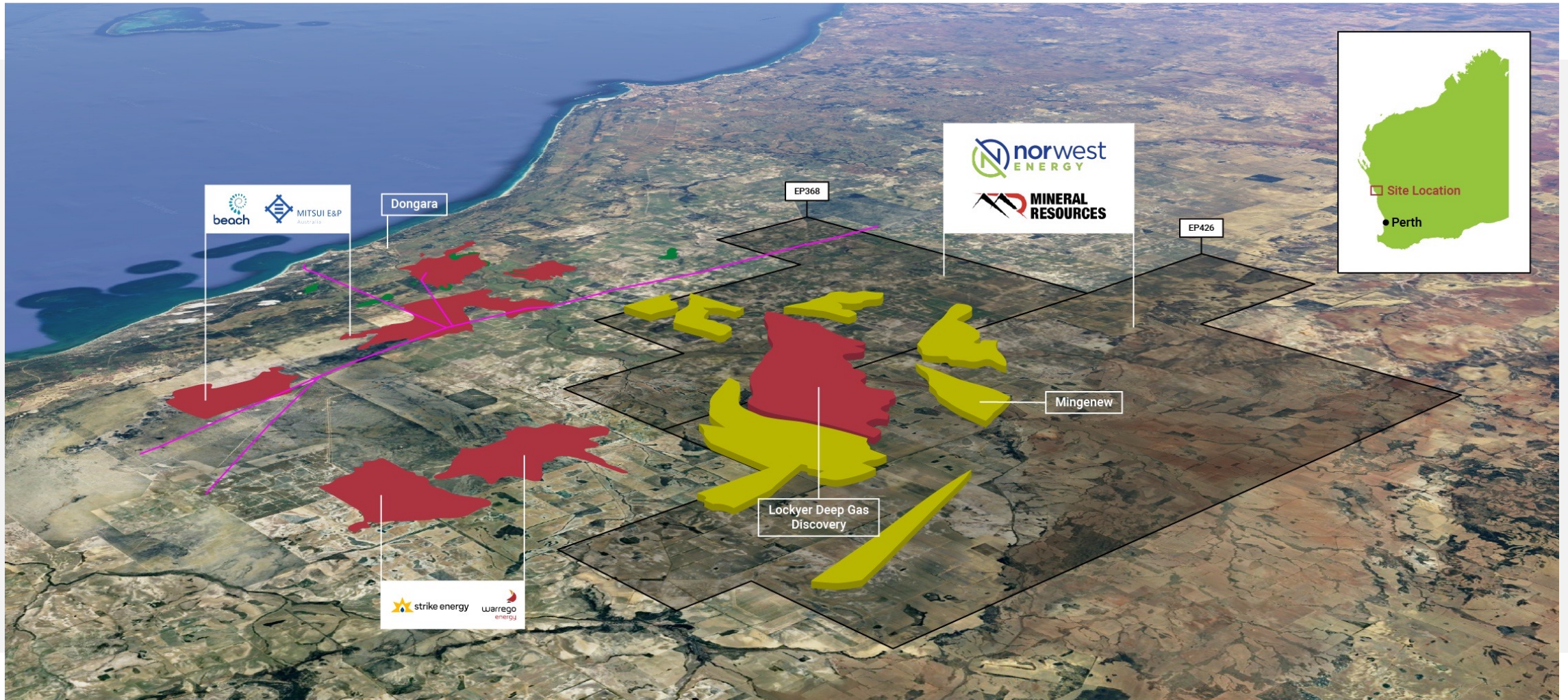
Prospective Resources are the estimated quantities of petroleum that may potentially be recovered by the application of a future development project(s) and relate to undiscovered accumulations. These estimates are quoted as gross (100%) and have both an associated risk of discovery and a chance of development. Further exploration, appraisal and evaluation is required to determine the existence of a significant quantity of potentially moveable hydrocarbons.

FY22 - A Transformative Year

- Discovery of potentially the largest ever Australian onshore conventional gas field
- Absolute Open Flow rate of 190 MMscf/d on test
- Moved up to #72 on Deloitte WA Index of ASX companies (from #306)
- \$21 million cash on hand (at end September 2022)
- Top 40 shareholders increased to ~50% of SOI, including industry heavyweights and a strong institutional presence



Large JV Position Across Permian Sweet Spot



Corporate Snapshot

CAPITAL STRUCTURE

A\$0.046

Closing Share price
(21 Nov '22)

6.7B

Shares
on issue

A\$309M

Market
Capitalisation

A\$21M

Cash at end Sept '22

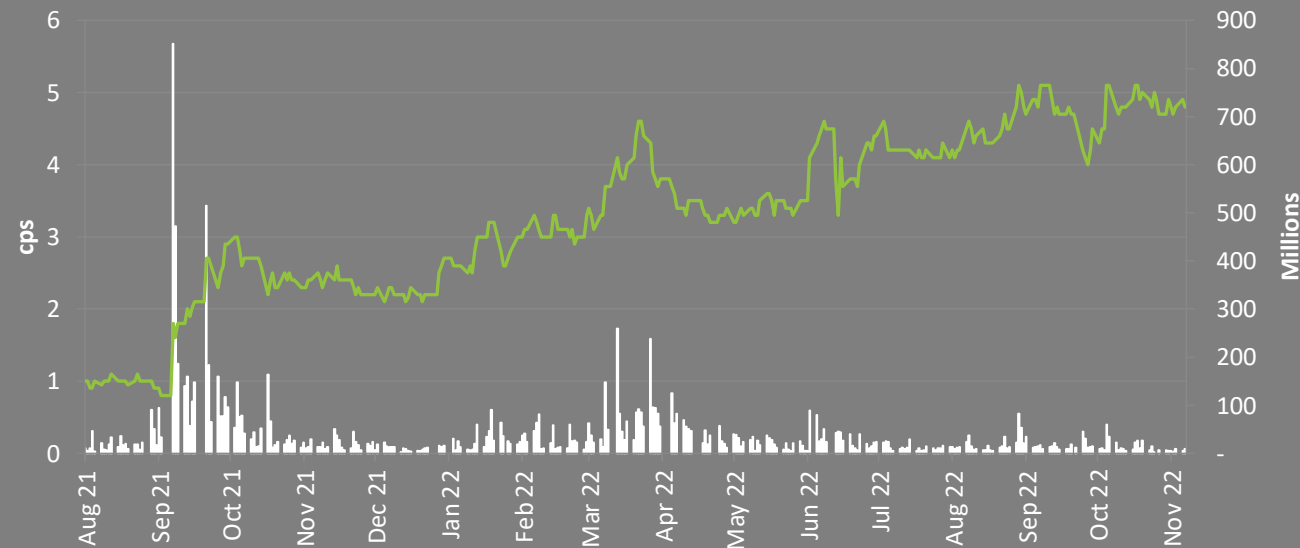
Nil

Debt

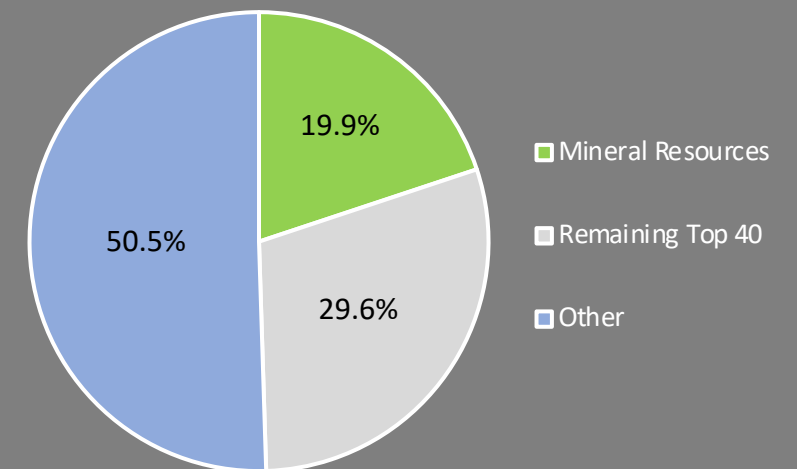
\$288M

Enterprise Value

HISTORICAL SHARE PRICE

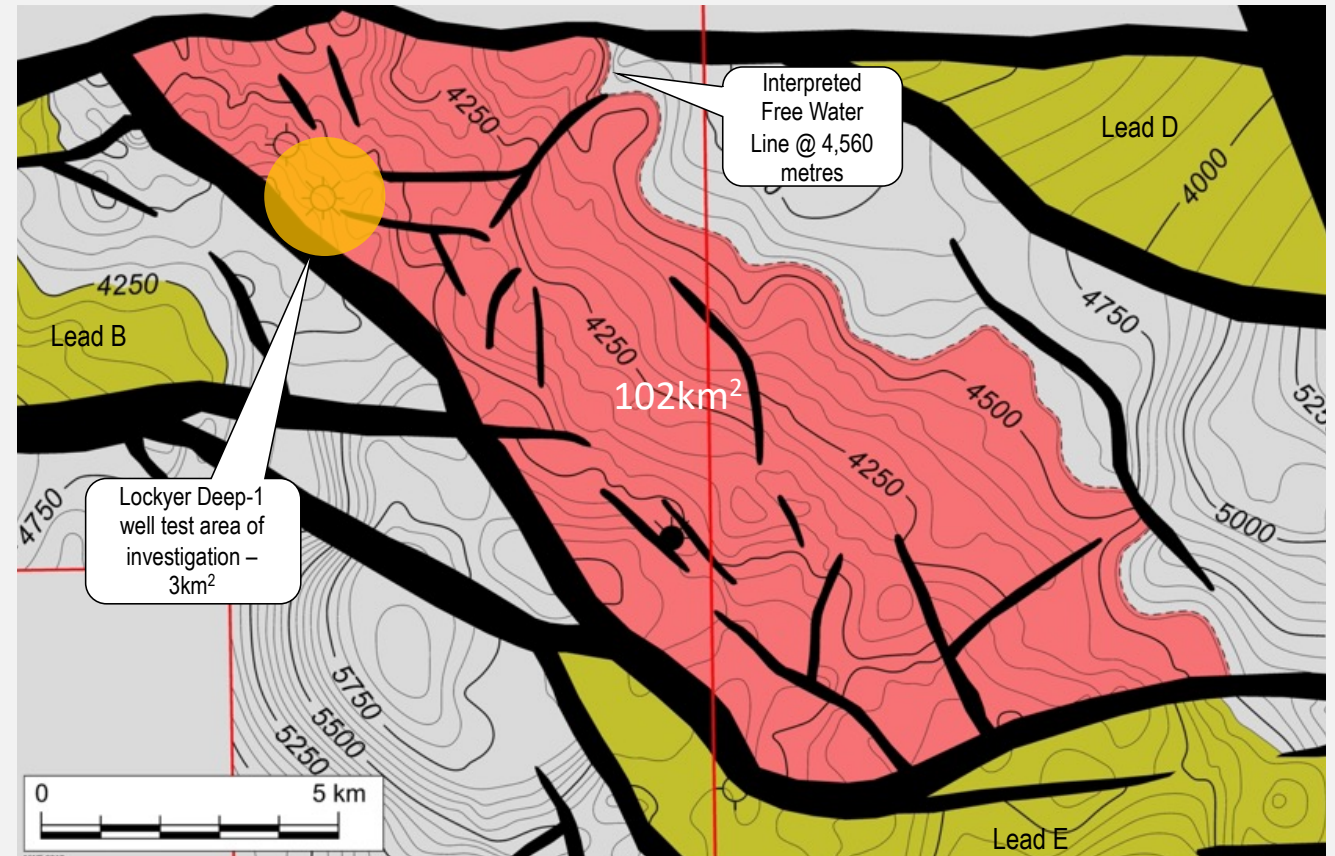


OWNERSHIP



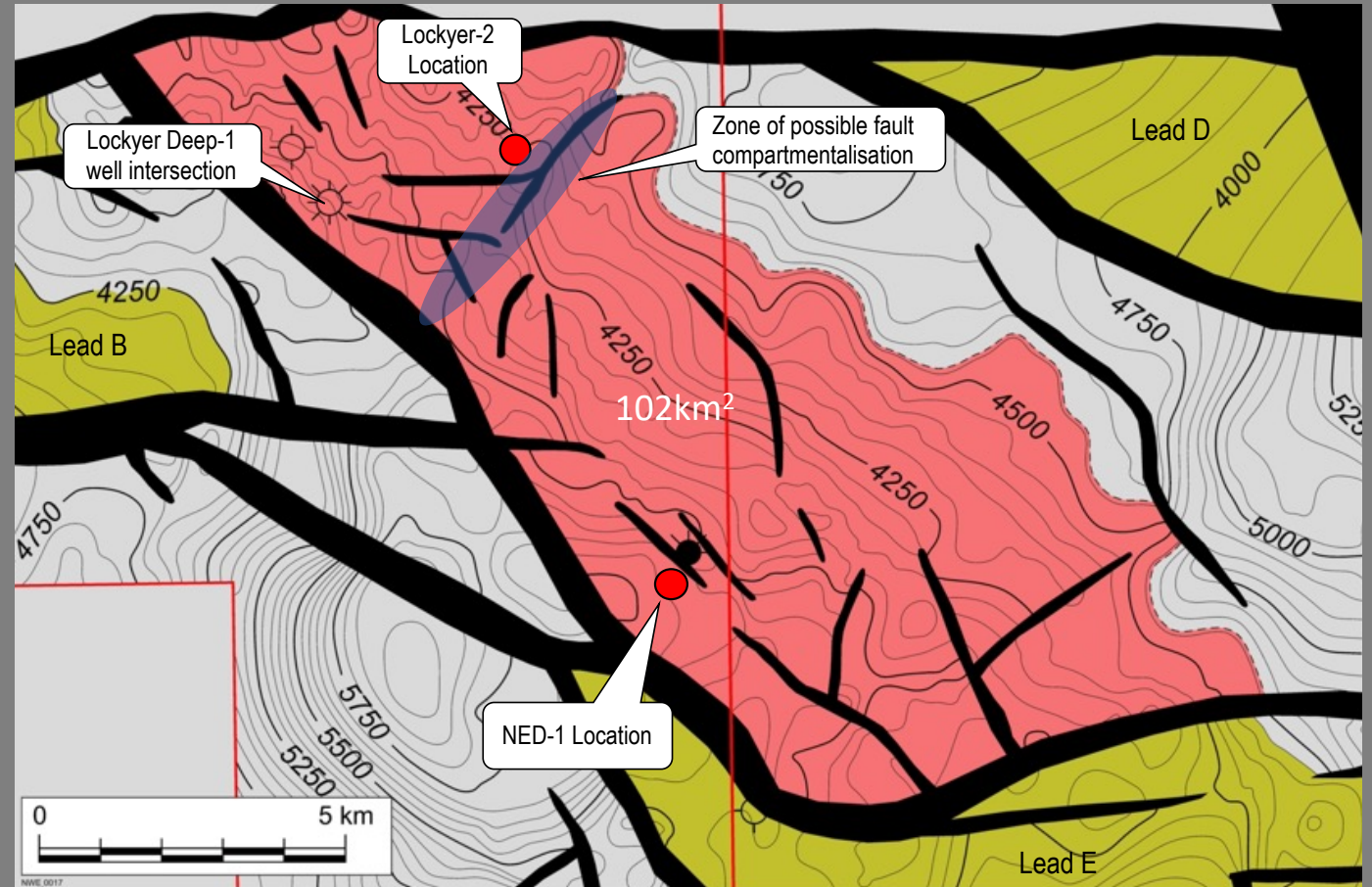
Lockyer Resource Potential

- Lockyer Deep-1 interpreted ~800 metre gas column sets up potential for huge resource across greater structure
- Potential for gas across 102 km²
- Well test analysis indicates gas in place of ~30 Bcf per km² in immediate vicinity of Lockyer Deep-1
- Recovery factor estimated 75-85%
- Drilling program and 3D seismic designed to prove up resources and inform future development planning
- Discovery Assessment Report approved by DMIRS



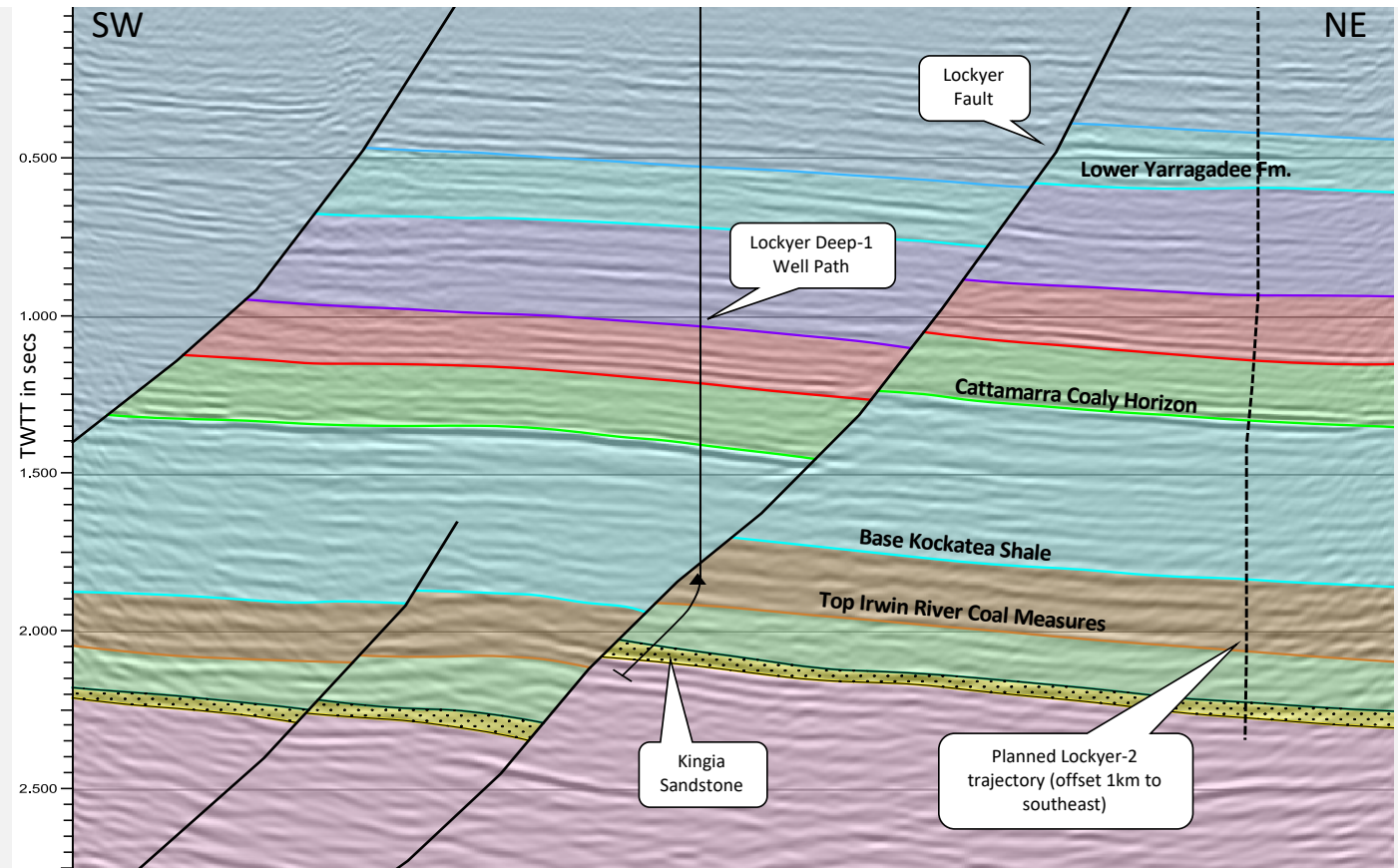
Lockyer Appraisal

- Initial two wells, back-to-back
- Lockyer-2 and North Erregulla Deep-1
- Land access and environmental plans approved
- Working to secure rig contract and final regulatory approvals
- Wells designed to confirm presence of gas across greater structure, to southeast and downdip from discovery well
- Targeting commencement before year-end
- Lockyer-3 and Lockyer-4 in planning stage
- Rococo 3D seismic survey commencing December



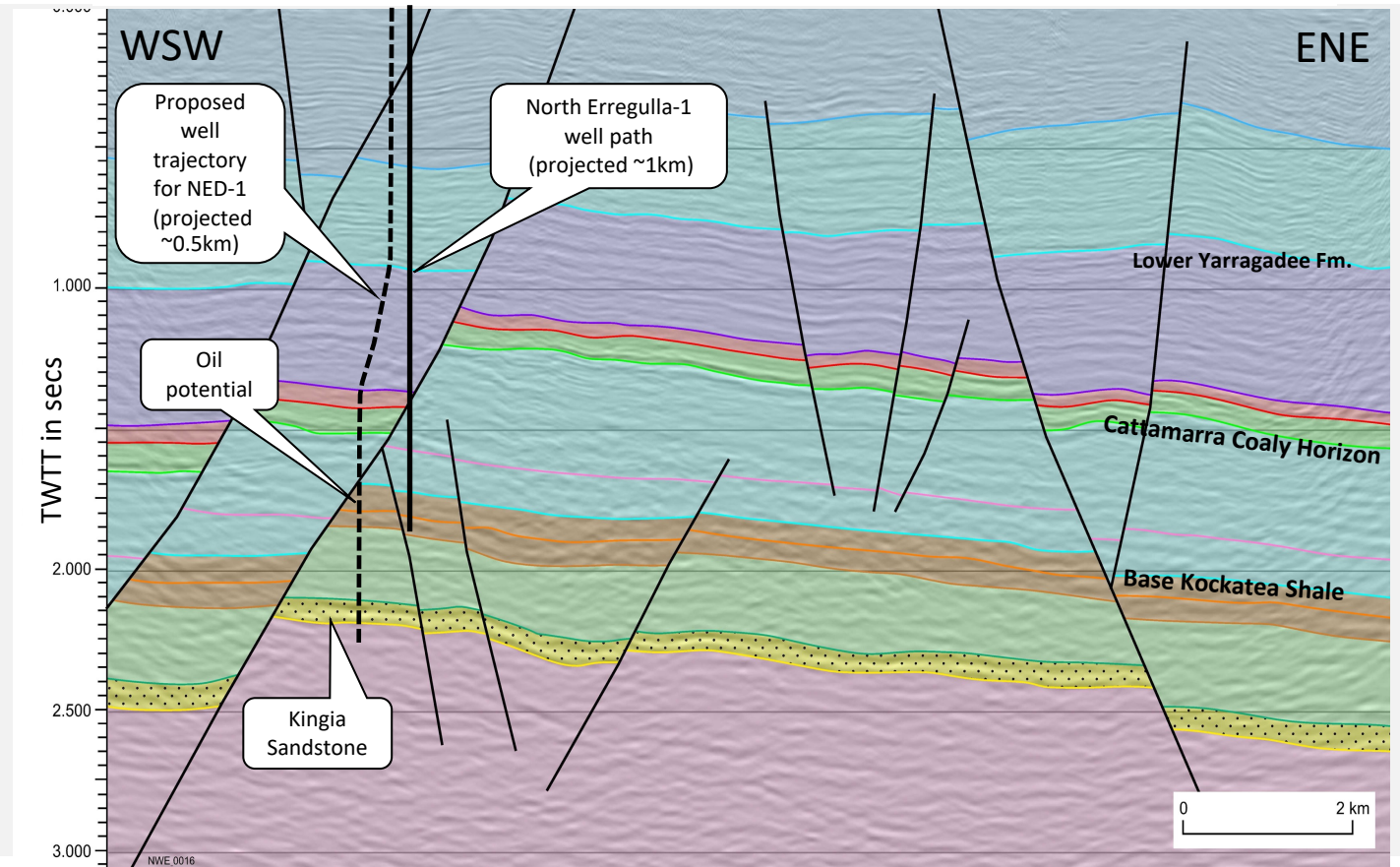
Well: Lockyer-2

- Classed as gas appraisal well
- Deviated well, S-shape
- Planned Total Depth 4,451m TVDSS
- Test NE extension of Kingia Sst 330m downdip from Lockyer Deep-1
- In success case production testing will investigate gas-water boundary further downdip
- Determine hydrocarbon potential of Dongara, Wagina and High Cliff intervals
- Plan coring of Kingia Fm. (54 metres)
- 55 day well, spud to rig-release



Well: North Erregulla Deep-1

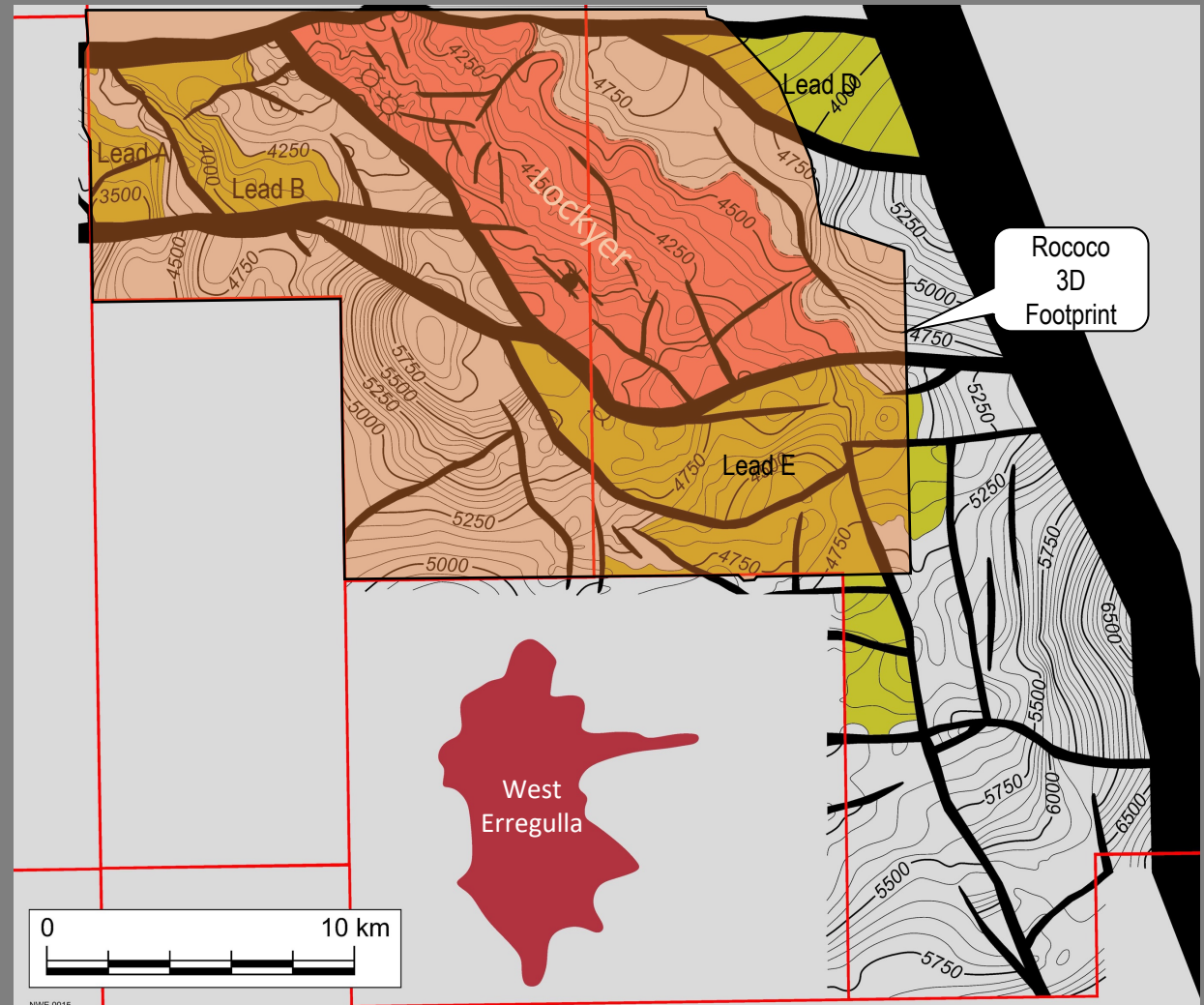
- Classed as exploration well
- Deviated well, S-shape
- Planned Total Depth 4,035m TVDSS
- Test southern culmination ~8km SE of Lockyer Deep-1
- Prove up southern field extent of greater structure (if continuous)
- Kingia ~50m updip from Lockyer Deep-1
- Contingent coring of Kingia Fm (63 metres) upon confirmation of gas
- Test oil potential in Arranoo/Dongara/Wagina
- 50 day well, spud to rig-release



Ringneck 2D Seismic Line

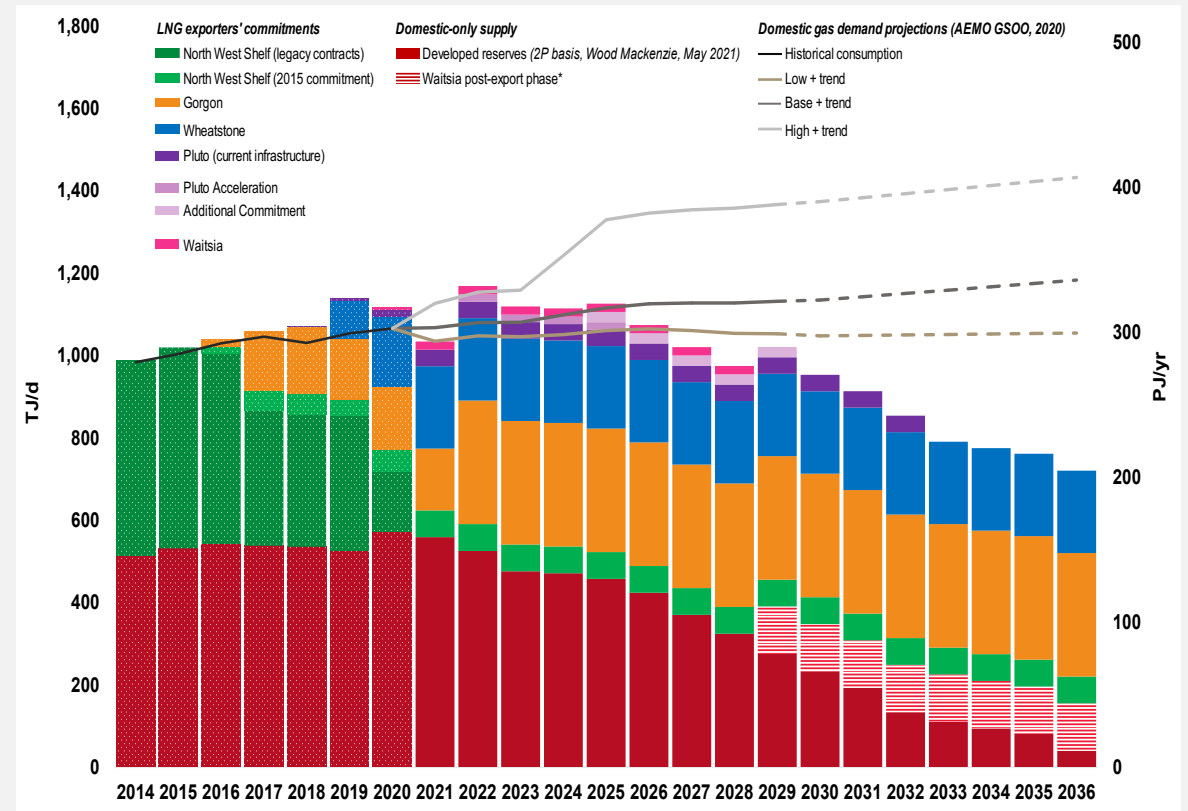
Rococo 3D Seismic Program

- Seismic contractor Terrex to acquire 385km² 3D survey commencing December 2022 (post-harvest)
- Land access and regulatory approvals secured
- Acquisition estimated to take ~3 months
- Covers greater Lockyer structure and adjacent exploration leads
- Will provide a high-resolution view of subsurface to inform resource estimation, development planning and exploration drilling
- 3D seismic often enhances understanding of reservoir and/or hydrocarbon distribution via attribute analysis, AVO analysis, etc.



Monetisation Opportunities

- WA domestic gas market shortfall forecast ~2026/27 exacerbated by recent STO production downgrades; Lockyer project very well placed to meet shortfall
- Collie & Muja coal-fired power generation to shut down 2027 to 2029
- Credit Suisse forecasting WA domgas A\$6 to A\$8 per GJ; NWE receiving enquiries from domestic gas users
- Spare capacity for LNG export opening up at Karratha Gas Plant (NWSV) – Waitsia exporting 250 TJ/d for 5 years from late 2023
- State Govt will consider additional applications for export when shortfall is filled and under exceptional circumstances
- NWE understands that resource volume may be considered as an exceptional circumstance (ref: Waitsia)
- Current netback LNG spot pricing would be ~A\$35/GJ (Source: ACCC)
- *Example: 250 TJ/d at 50% domgas (@A\$7) and 50% LNG (@A\$20 long term netback) equates to gross sales of >A\$1.1 Bn p.a.*



Domestic Gas Agreements in the WA Market (Source WA Dept. of JTSI). Note: chart predates recently disclosed STO WA domgas production downgrades from 2023 onwards (est. 10% to 15% of total WA supply)

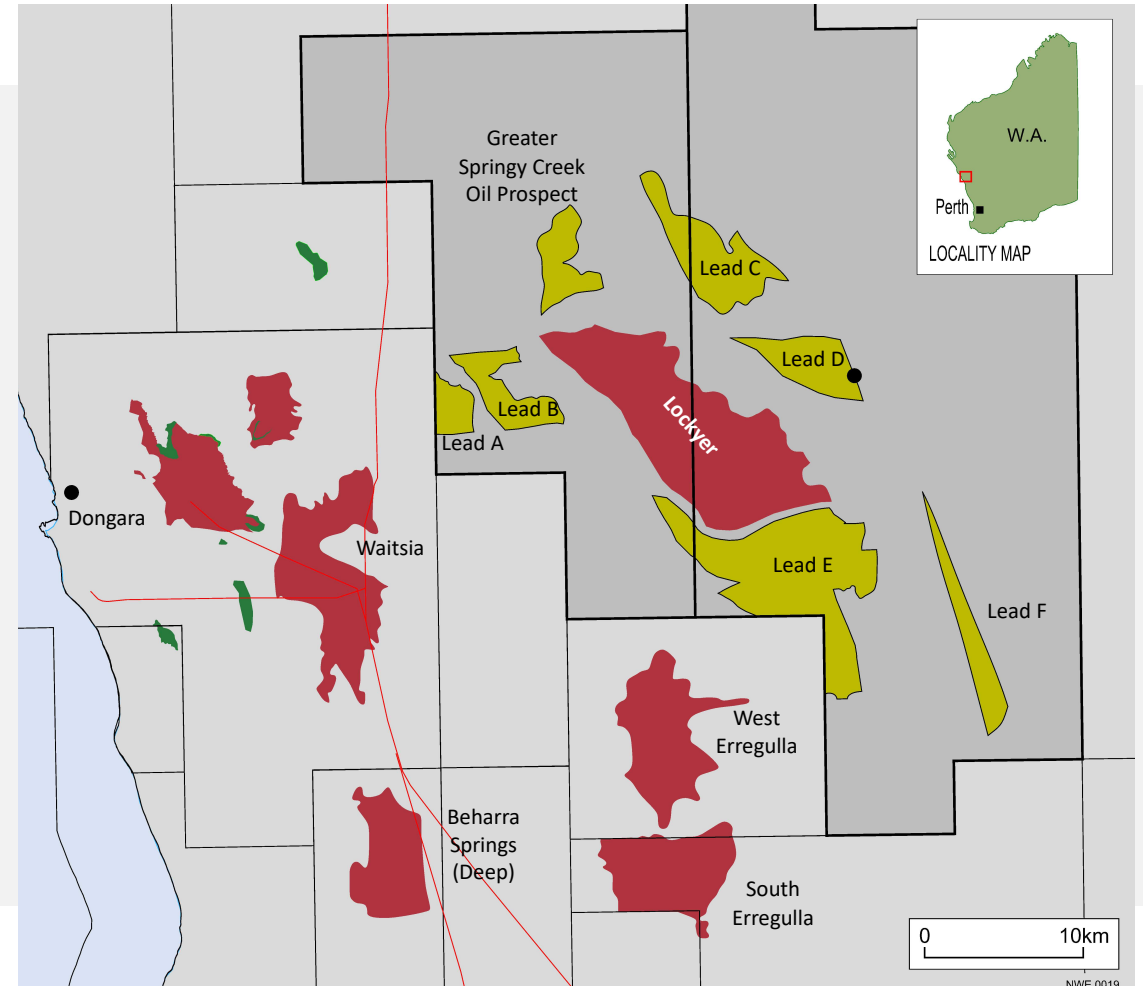
Pilbara Clean Fuels

- Acquired a 20% stake in Pilbara Clean Fuels Pty Ltd
- Pursuing development of a mid-scale, fully electrified liquefied natural gas (eLNG) plant in Port Hedland, Western Australia
- Opportunity to displace high-emissions marine bunker fuel (for iron ore carriers) with low-emissions LNG
- Norwest holds an option to utilise a portion of the eLNG plant's capacity on a tolling basis, under pre-agreed commercial principles
- Agreement provides a potential additional market for Norwest equity gas, with a linkage to international LNG pricing
- \$300,000 NWE investment funds an initial six-month Assess stage work program that is designed to progress the project towards the Select stage



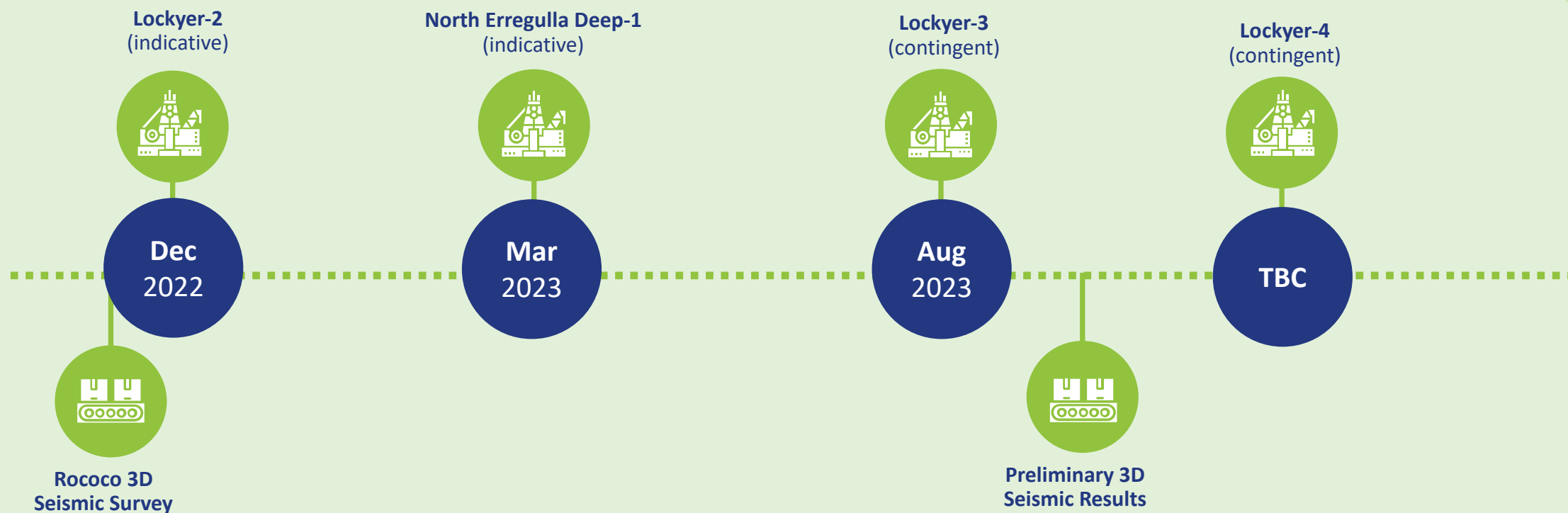
Follow-on Potential

- Significant follow-on exploration potential identified within permits; both gas and oil to unlock additional resources
- Upgraded by recent Ringneck 2D seismic results
- Rococo 3D seismic expected to improve definition of a number of leads
- Mitsui drilling may de-risk Leads A & B
- EP368 exploration well commitment will be met by NED-1
- EP426 exploration drilling commitment due mid-2024
- JV motivated to explore; immediate priority is however Locker appraisal



The Next 12 Months

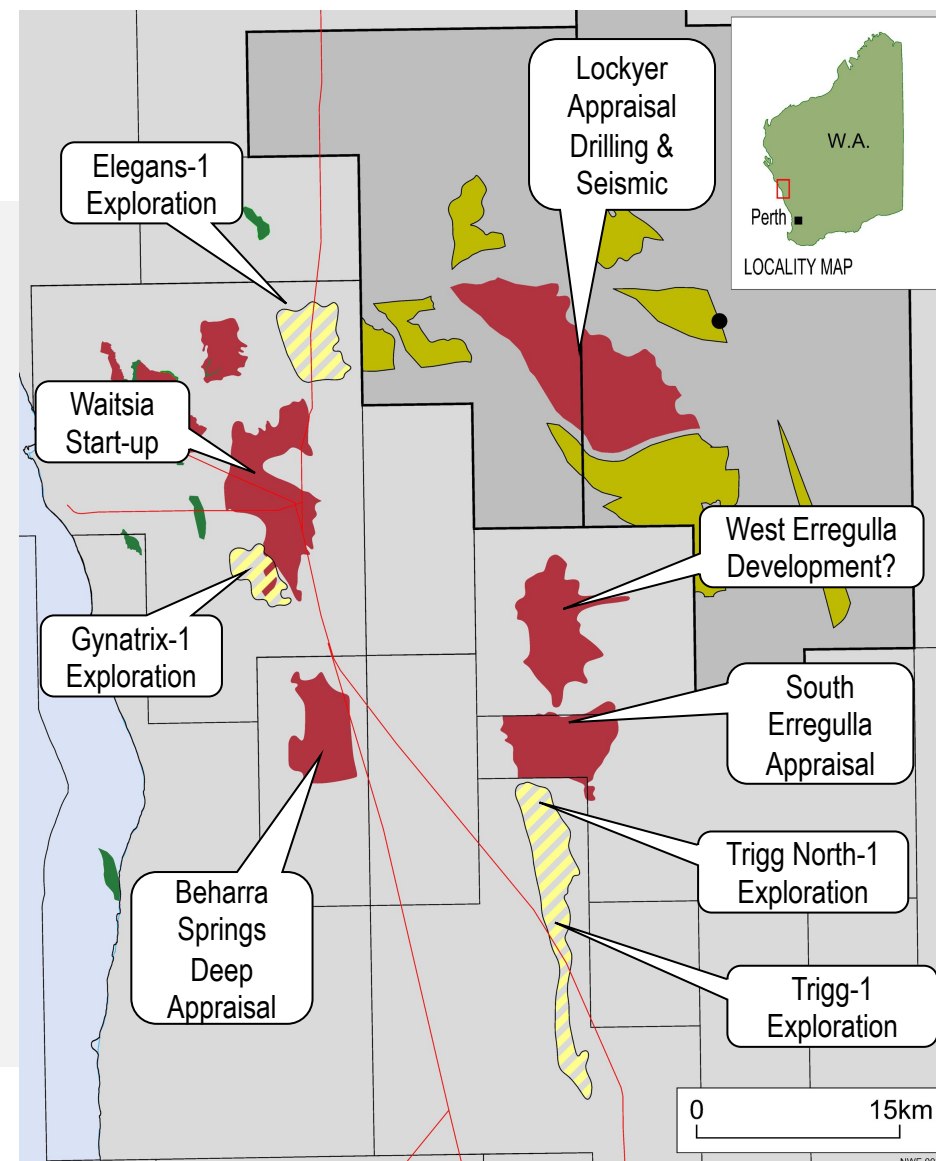
DEFINE THE RESOURCE



MARKET THE RESOURCE

Activity Ramping Up

- Waitsia development drilling complete; onstream Q4 2023
- Mitsui considering Waitsia expansion from 250 TJ/d to 375 TJ/d
- Resolution of WGO ownership? Other M&A activity?
- Mitsui drilling Elegans-1 and Gynatrix-1 Permian gas prospects (Easternwell 106 rig)
- Beach then drilling Trigg-1 and North Trigg-1 (Easternwell 106)
- Beharra Springs Deep appraisal drilling and follow-on near-field exploration
- STX planning South Erregulla appraisal drilling
- Expecting two rigs concurrently in basin



In Summary



Huge Resource Potential

- Structural mapping indicates Lockyer Deep discovery may extend across 102 km²
- Forthcoming drilling and seismic program to confirm



Prime Position

- Large acreage position in sweet spot of the Perth Basin Permian play
- Close to major infrastructure with route to Domgas and export markets



Strong Joint Venture

- JV with Operator Energy Resources Limited
- Excellent operational performance
- Strong working relationship



Well Funded

- \$21 m cash to fund comprehensive appraisal program
- 3D seismic and up to 4 wells



Lean Organisation

- Minimal headcount
- Low corporate overheads
- 100% focus on Perth Basin Permian play
- Engage specialist advisors as required



The Right Time

- Increasing demand for Natural Gas as a cleaner fuel to support the transition to renewables
- Long-awaited Perth Basin consolidation has commenced



Markets

- Well placed to meet WA domgas shortfall mid 2020's
- Potential for export
- Downstream opportunities



Transformative Period Ahead

- Drilling of NED-1 and Lockyer-2
- Rococo 3D seismic program
- Contingent Lockyer-3 & 4 wells

Thank You



CONTACT

Iain Smith
Managing Director
Email: info@norwestenergy.com.au



LOCATION

Norwest Energy NL.
Level 2
30 Richardson Street
West Perth
Western Australia 6005



PHONE

+61 8 9227 3240



WEBSITE

norwestenergy.com.au

