



# Discovery Driving Value

The information contained in this presentation is for informational purposes only and does not constitute an offer to issue, or arrange to issue, securities or other financial products. The information contained in this presentation is not investment of financial product advice and is not intended to be used as the basis for making investment decisions. The presentation has been prepared without taking into account the investment objectives, financial situation or particular needs of any particular person. Before making an investment decision, you should consider, with or without the assistance of a financial advisor, whether an investment is appropriate in light of your particular Investment Needs, Objectives And Financial Circumstances. No representation or warranty, expressor implied, is made as to the fairness, accuracy, completeness or correctness of the information, opinions and conclusions contained in this presentation. To the maximum extent permitted by law, none of Aruma Resources Ltd, their directors, employees or agents, nor any other person accepts any liability, including, without limitation, any liability arising out of fault of negligence, for any loss arising from the use of the information contained in this presentation. In particular, no representation or warranty, express or implied is given as to the accuracy, completeness or correctness, likelihood of achievement or reasonableness or any forecasts, prospects or returns contained in this presentation nor is any obligation assumed to update such information. Such forecasts, prospects or returns are by their nature subject to significant uncertainties and contingencies. The information in this report that relates to Mineral Resources at the Trojan Gold Project is based on information prepared by MetalsX Limited as announced to the ASX on 18 August 2016 in its 2016 Annual Update of Mineral Resource and Ore Reserves.

## Forward Looking Statements Caution

Certain statements contained in this document constitute forward looking statements. Such forward-looking statements are based on a number of estimates and assumptions made by the Company and its consultants in light of experience, current conditions and expectations of future developments which the Company believes are appropriate in the current circumstances.

These estimates and assumptions while considered reasonable by the Company are subject to known and unknown risks, uncertainties and other factors which may cause the actual results, achievements and performance of the Company to be materially different from the future results and achievements expressed or implied by such forward-looking statements. Investors are cautioned that forward looking information is no guarantee of future performance and accordingly, investors are cautioned not to place undue reliance on these forward-looking statements.

## Competent Person Statement

The information in this presentation that relates to Mineral Resource and Exploration Results is based on information compiled by Mr Peter Schwann who is the Managing Director of Aruma Resources Limited. Mr Schwann is a Fellow of the Australasian Institute of Geoscientists and has sufficient experience that is relevant to the style of mineralisation and type of deposit under consideration and to the activity being undertaken to qualify as Competent Person as defined in the 2012 Edition of the "Australasian Code for Reporting of Exploration Results, Mineral Resources and Ore Reserves". Mr Schwann consents to the inclusion in the release of the matters based on this information and the form and context in which it appears. All exploration results reported have previously been released to ASX and are available to be viewed on the Company website [www.arumaresources.com](http://www.arumaresources.com). The Company confirms it is not aware of any new information that materially affects the information included in the original announcements. The Company confirms that the form and context in which the Competent Person's findings are present have not been materially modified from the original announcements. All historic data has been sourced from Western Australian Mineral Exploration reports (WAMEX) and has been validated by GIS validation procedures by Aruma staff and consultants.

For slide 17, the full Resources statement is included for the Scotia Area.

Area	Location	Indicated			Inferred			Total		
		Tonnes	Grade	Ounces	Tonnes	Grade	Ounces	Tonnes	Grade	Ounces
Scotia	Underground	60,803	15.58	30,454	58,560	15.04	28,315	119,363	15.31	58,769
Taurus	Underground	91,328	10.39	30,513	335,471	11.47	123,689	426,797	11.24	154,202
Scotia	Surface	886,000	4.09	116,400	457,000	3.56	52,300	1,343,000	3.91	168,700
Scotia	Lady Eleanor Surface				282,200	2.14	19,400	282,200	2.14	19,400
Scotia	Freegift Surface				254,000	1.583	12,500	254,000	1.583	12,500
		<b>1,038,131</b>	<b>5.32</b>	<b>177,367</b>	<b>1,387,231</b>	<b>5.31</b>	<b>236,204</b>	<b>2,425,360</b>	<b>5.31</b>	<b>413,571</b>

From Pantoro (ASX:PNR) "Strategic Transaction and Capital Equity Raising Presentation" ASX announcement 15 May 2019

# **CORPORATE SNAPSHOT**



## BOARD & MANAGEMENT

Non-Executive Chairman  
**Paul Boyatzis**

Managing Director  
**Peter Schwann**

Director  
**Mark Elliott**

Company Secretary  
**Phil MacLeod**

## MAJOR SHAREHOLDERS

Directors – 3%  
Top 20 Shareholders – 45%  
1,384 Shareholders

## Trading Information

Share price (3/5/2021)	A\$0.07
52 week low/high	A\$0.03 - A\$0.165
Shares on Issue	106M (22M options )
Market Cap	A\$8M
Cash (31/3/2021)	A\$3M
Enterprise Value	A\$5 M

## AAJ Share Price - past 12months



A small yellow chevron pointing to the right.

## NEW PROJECTS DRIVE VALUE

A large yellow chevron pointing to the right, serving as a background for the text.

### **Professor David Groves' advice to find significant gold deposits**

"Most gold deposits are strongly controlled by first-order structures such as craton margins or suture zones. The currently declining exploration success rate can only be reversed by selective district-scale exploration near first-order structures."

### **The 2016 GSWA Capricorn Seismic Report stated**

"The Nanjilgardy Fault is a (450km long) major, mantle-tapping fault that marks the boundary between the Pilbara Craton and the Ashburton Basin. It is the main growth fault in the southern Pilbara."

### **Aruma's Peter Schwann**

"We have are in underexplored areas with known gold, strong structures, reactive rock types intruded by hot granites and have potential for multimillion ounce gold discoveries. The maiden drilling at Saltwater has discovered new gold camp"

# ➤ ARUMA'S PROJECTS



## FOUR ORGANIC NEW GOLD PROJECTS: 1,577km<sup>2</sup>

### PILBARA

- **Melrose**
  - 370km<sup>2</sup> awaiting grant near Paulsens mine
- **Saltwater**
  - 646km<sup>2</sup> Granted leases on Nanjilgardy fault

### YILGARN

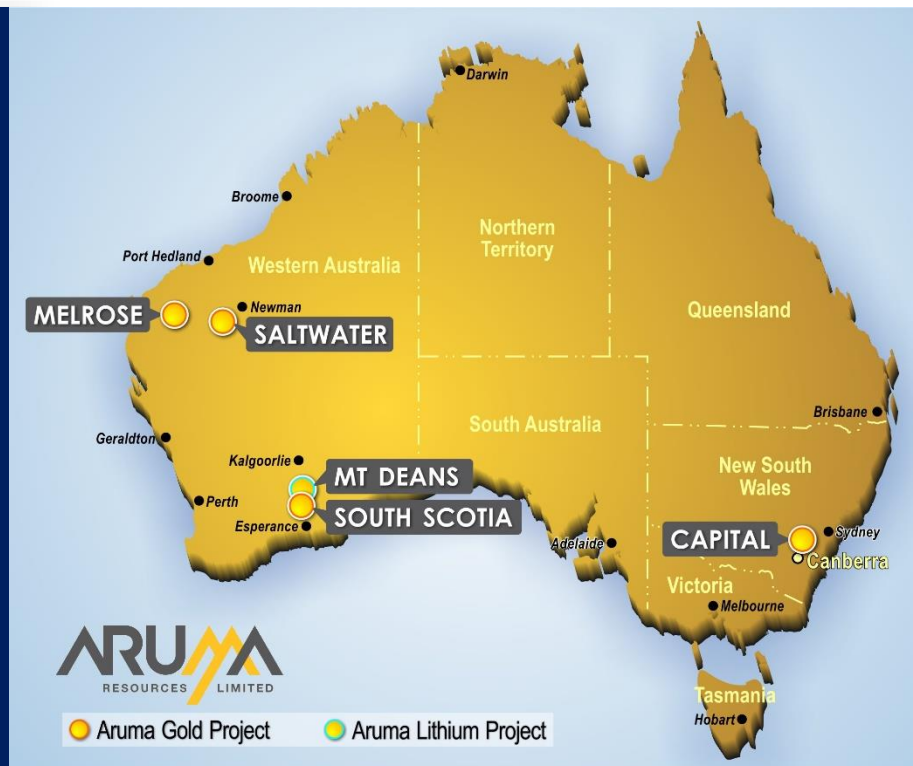
- **Scotia South**
  - 202km<sup>2</sup> granted on Scotia host extension

### LACHLAN FOLD BELT

- **Capital**
  - 358km<sup>2</sup> Granted over historic gold mines

## NORSEMAN Li-Ta PROJECT:

- **Mt Deans**
  - 1.4km<sup>2</sup> granted on rail - highway to port

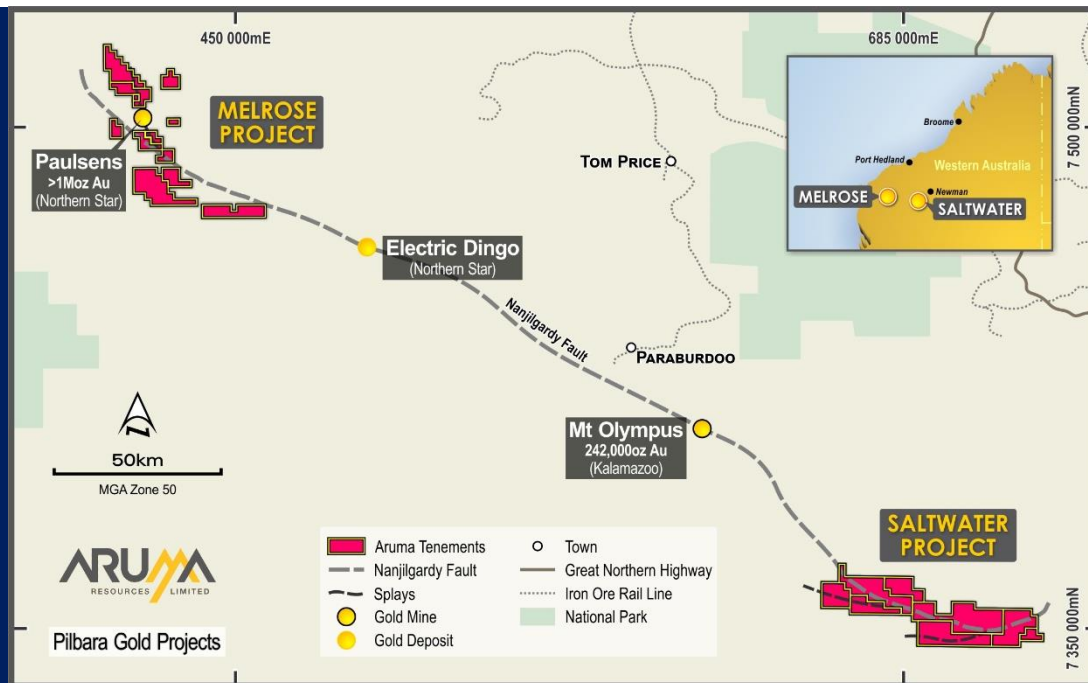


# ➤ Pilbara Gold Projects



## Attractions

- **Pilbara Location**
  - Fertile rock types
- **Nanjilgardy Fault**
  - 450km Crustal Suture
- >3M oz Corridor
- Lease Areas - >1,000km<sup>2</sup>
- Greenfields drilling indicates new gold camp at Saltwater
- On Paulsens and Mt Olympus trend

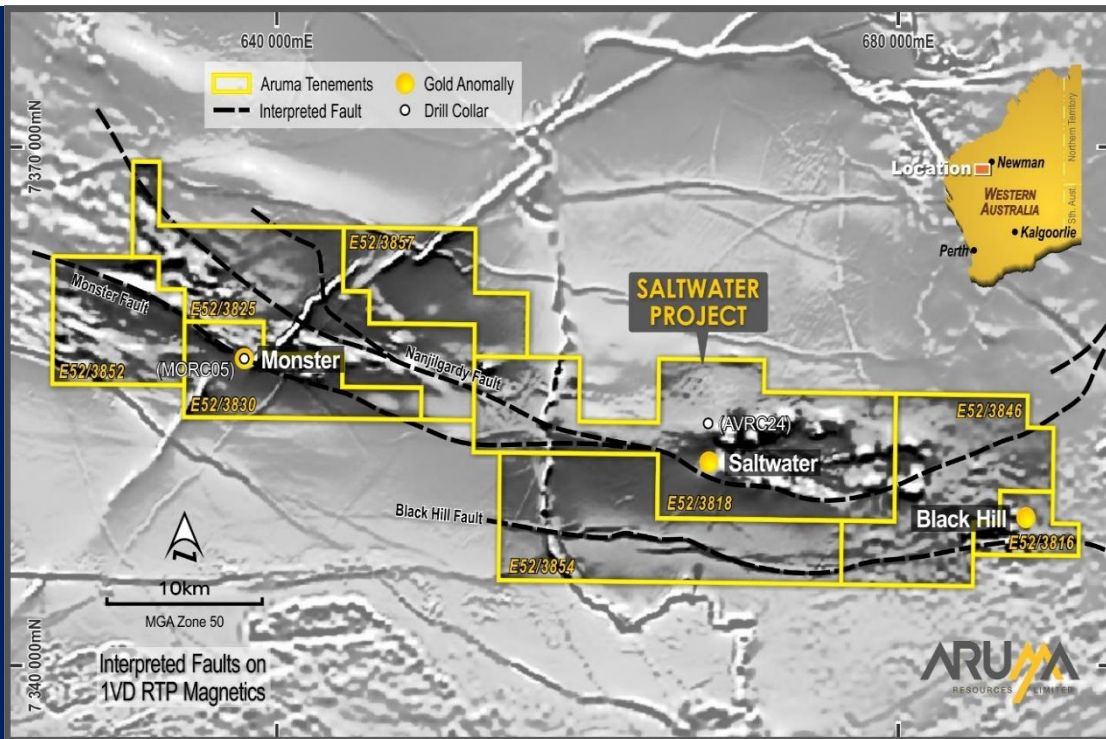




# ➤ Saltwater Gold Project

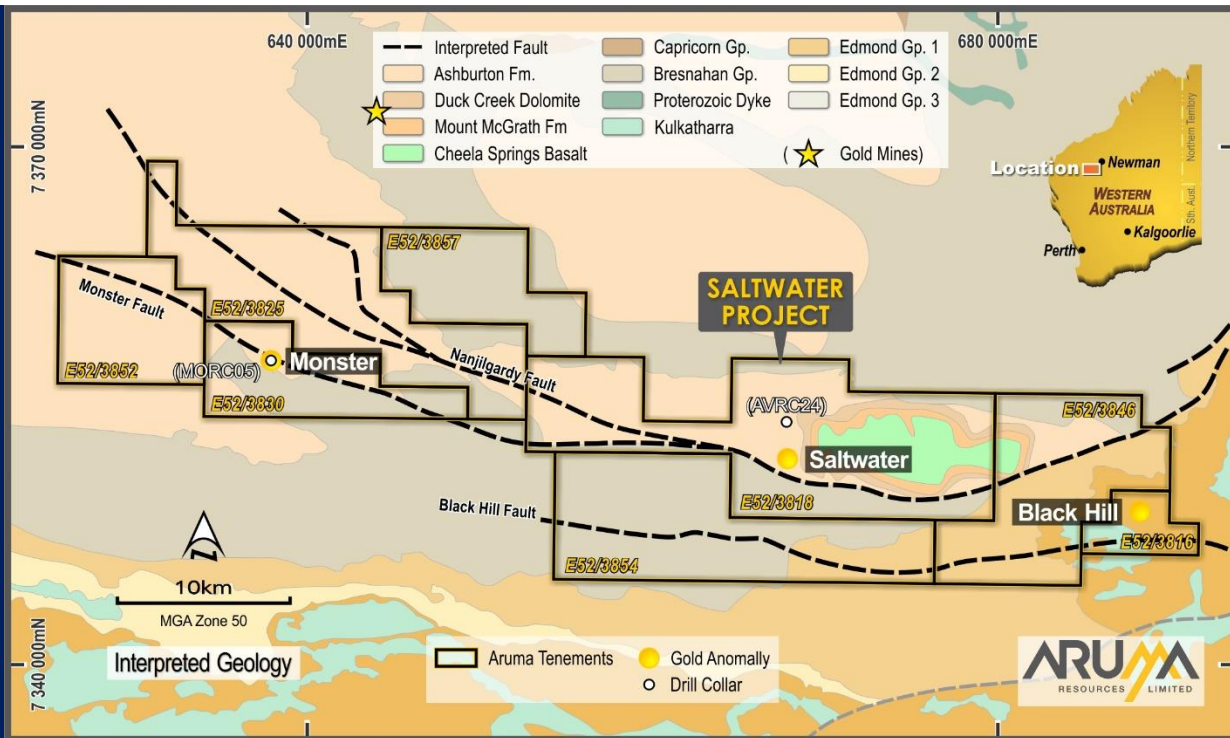
## Why?

- **Location** – Pilbara around historic Saltwater nugget gold area
- **Structure** – Nanjilgardy Fault – Crustal Suture with splays
- **Geophysics** – 60km<sup>2</sup> coincident Magnetic-AEM ring structure
- **Area** – Large (646km<sup>2</sup>) strategic land holding – Fully granted
- **Gold Indicators**
  - Historical nuggets at Saltwater and Black Hill
  - Drilling results of >0.2g/t Au at Saltwater and Monster
  - Large quartz veins and strong alteration visible



# ➤ Saltwater Gold Project

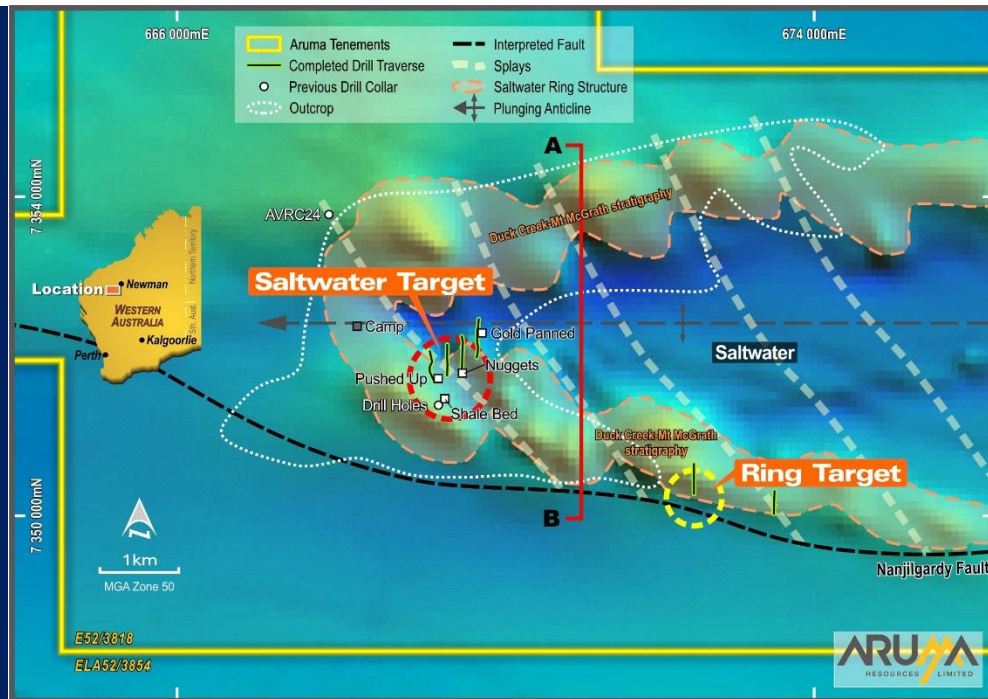
- **Drilling Completed**
- **Geology** – Mapped as Ashburton and Bresnahan formation
- **Source** – Nanjilgardy Fault – with splays
- **Geophysics** – 60km<sup>2</sup> coincident Magnetic-AEM ring Saltwater Dome
- **Underlying Geology** – Drilling intersects Mt McGrath and Cheela Springs basalt





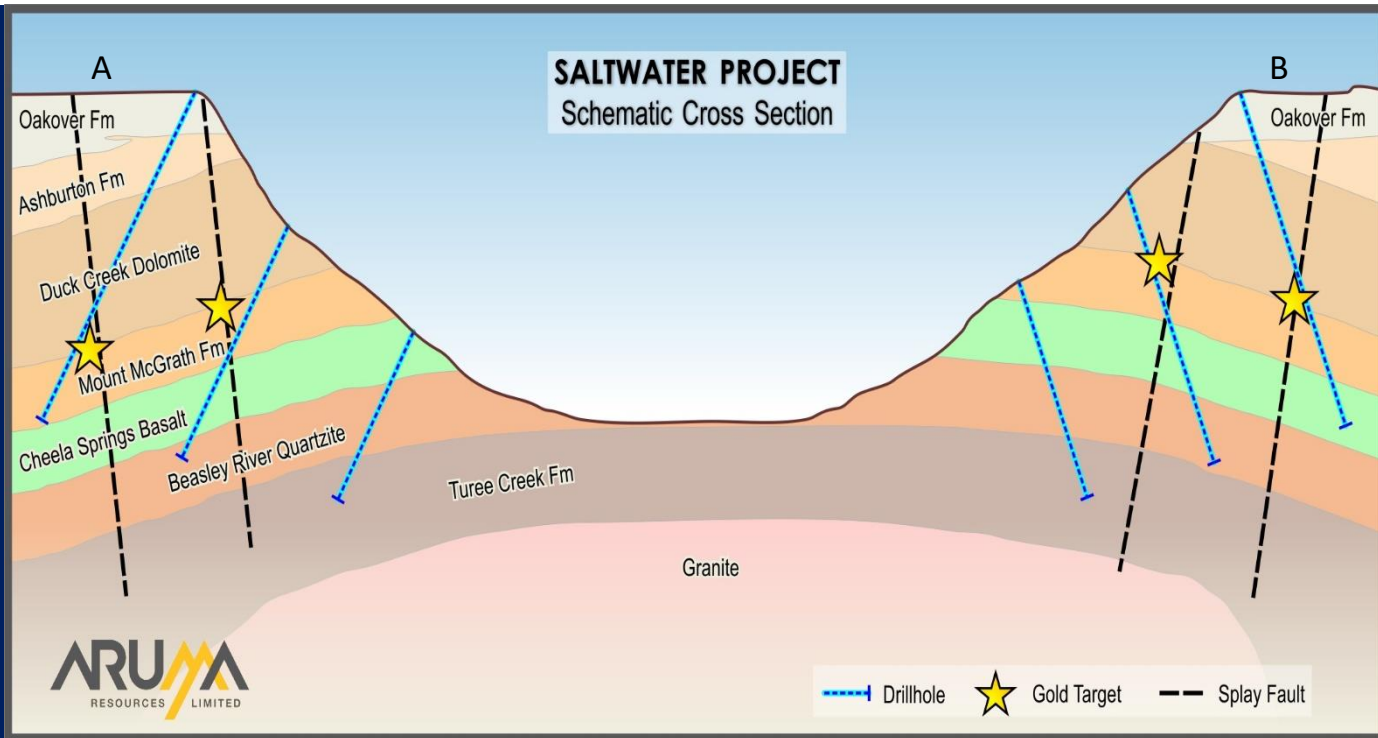
# ➤ Saltwater Gold Project

- Drilling completed 4,518m in 40 RC holes
- 12 out of 40 holes with intersections over 0.3g/t Au spaced over 4km at
  - Saltwater Mining area
  - Saltwater Ring Targets
- **Geology** – Was mapped as Ashburton and Bresnahan formation
- **Drilling intersects** - Mt McGrath Formation and Cheela Springs Basalt | Same as Mt Olympus
- **Source** – Nanjilgardy Fault – with splays
- **Target** – Area is now over 60km<sup>2</sup>
- **Drilling** – on lines shown
- **Interpreted section** – A-B on red line



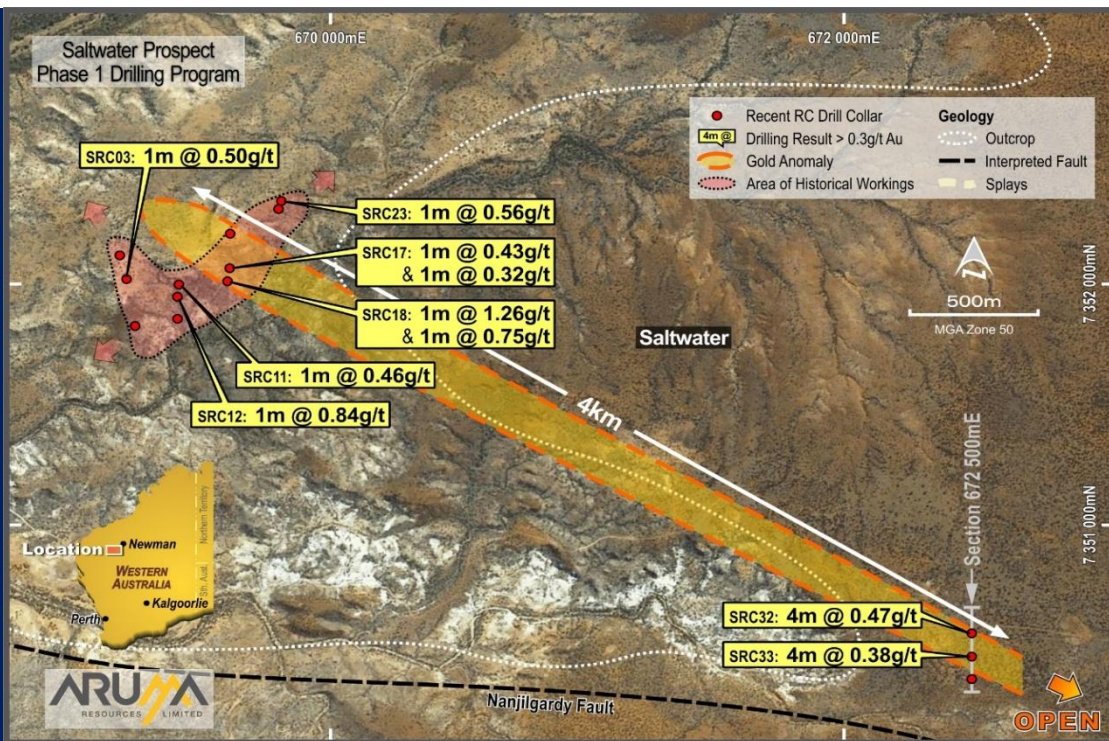
# ➤ Saltwater Gold Project

- **Structure** – Mapped as a dolerite- now a dome
- **Geology** – Was mapped as Ashburton and Bresnahan formation
- **Drilling intersects** - Mt McGrath Formation and Cheela Springs Basalt Same as Mt Olympus
- **New work** –Geophysics collation started
- **Gold locations**



# ➤ Saltwater Gold Project

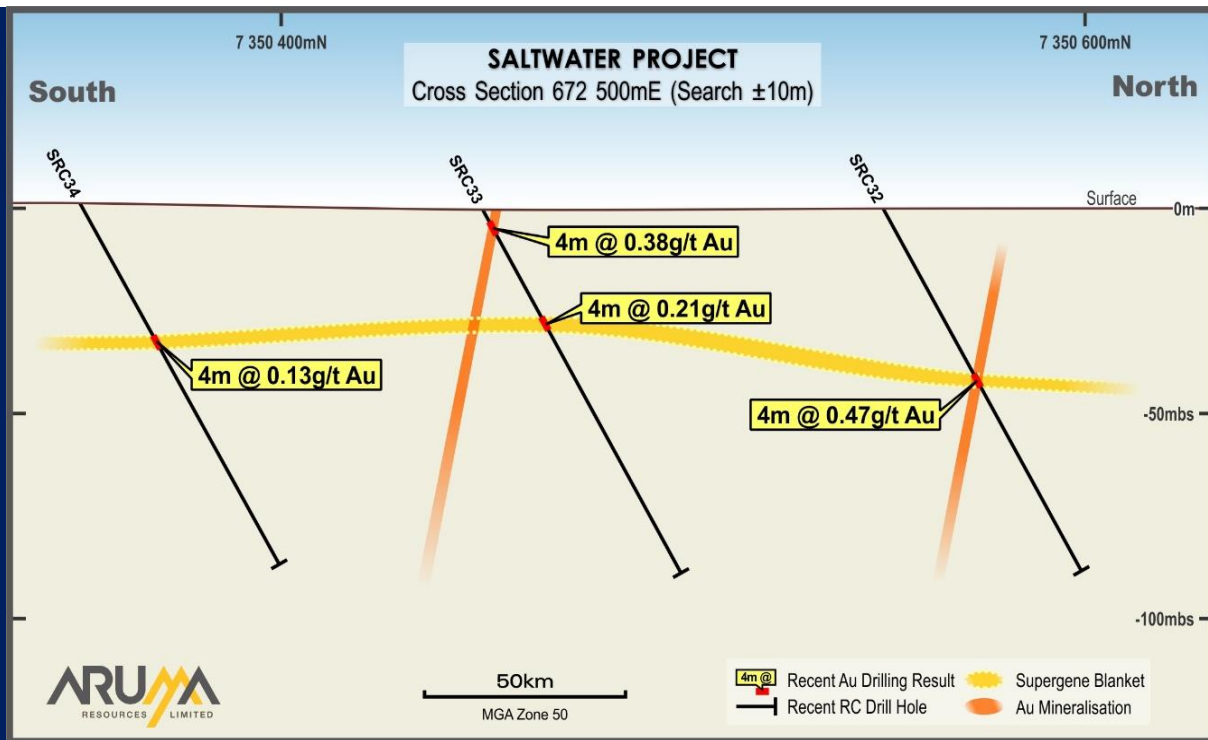
- Drilling completed
- 4,518m in 40 RC holes
- 12/40 holes >0.3g/t Au confirm new Camp
- Drill results up to 1.26g/t Au
- Ring Structure gold confirmed
- Drilling shows supergene blanket >200m wide
- 4km long and open in all directions



# ➤ Saltwater Gold Project



- Ring Structure gold confirmed
- Drilling shows supergene blanket
- >200m wide
- 4km long indicated and open in all directions
- We are in the right suburb!
- Now lets find the streets



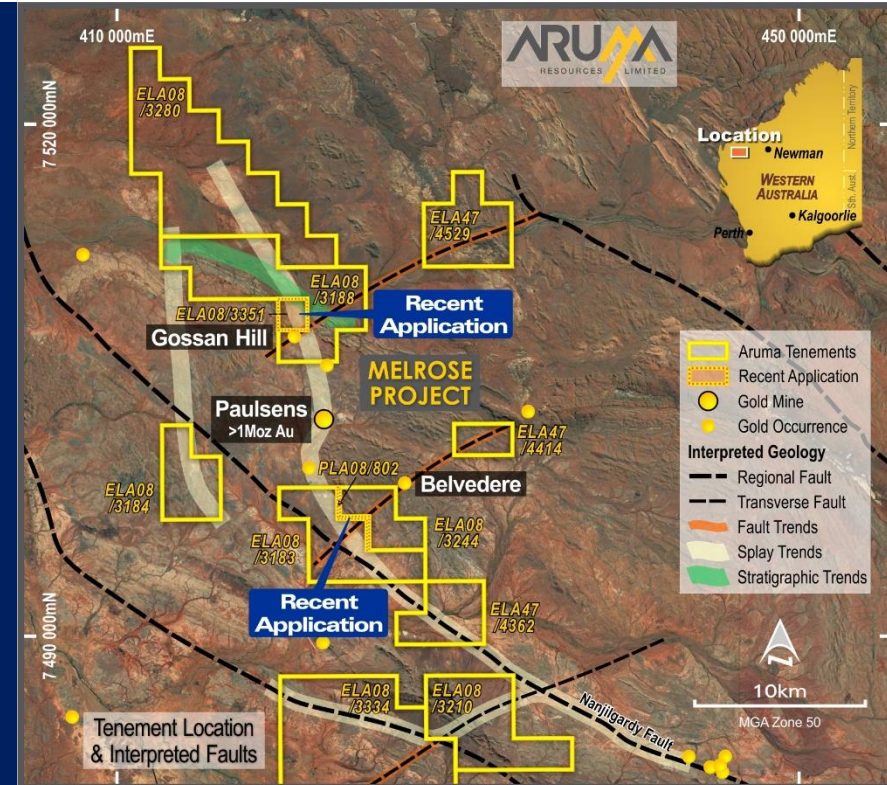


# ➤ Melrose Gold Project

- **Location** – Pilbara -Paulsens Mine >1moz produced – Leases to be granted July 21
- **Structure** – Nanjilgardy Crustal Suture Paulsen splay – >15km strike length
- **Area** –352km<sup>2</sup> controlling Paulsens Structure
- **Gold Indicators**
  - Rock chip and drilling >2g/t Au
  - Drilling results of >20m >0.2g/t Au at Gossan Hill not followed up

**“(It would be)Extremely unusual for no other sizeable deposit within 50km”**

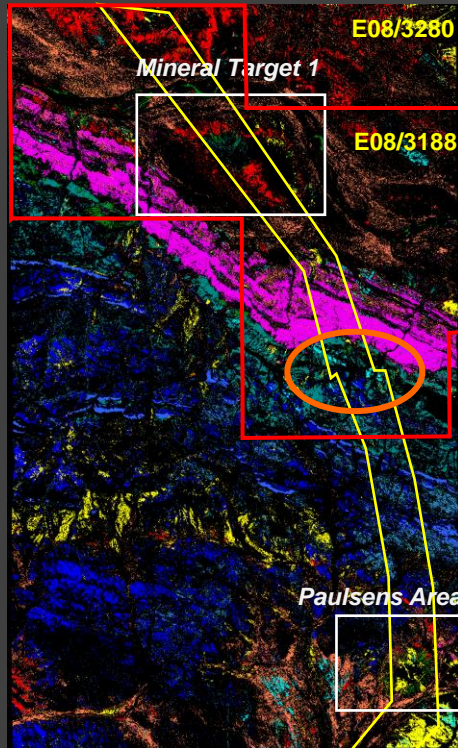
Quote from Bill Beament,  
(Acquisition Presentation, May 2010)



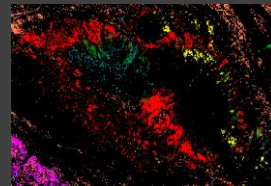


## MINERAL MAPPING – TARGET MINERAL MAPS 3 – Sentinel 10m

No Vegetation Rule Class Mineral Map

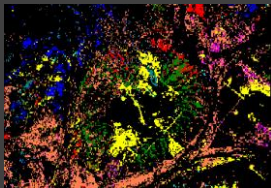


Mineral Target 1

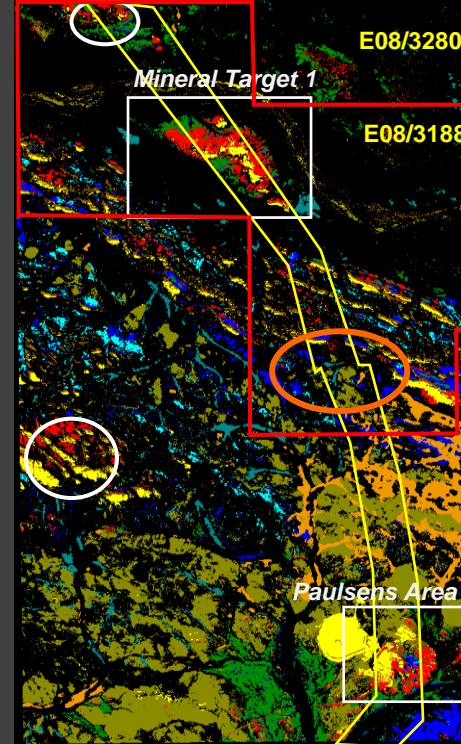


- PAR
- SER MIX
- SER CAL
- HAL CAL
- PAR CAL & PAR CHL
- CHL & PAR CHL
- CHL & AMP
- AMP
- NONT CAL
- DOL

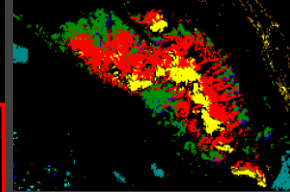
Paulsens Area



Sentinel 10m Rule Class Mineral Map

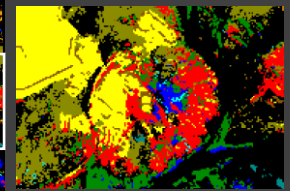


Mineral Target 1



- PYRT
- ANO
- SMECT
- GAL
- MONT
- MAL
- CHYR
- SERP
- HEM

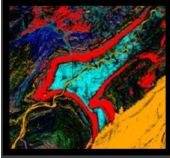
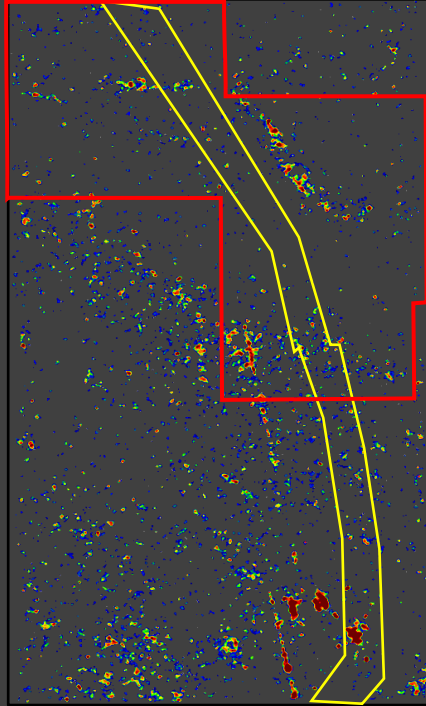
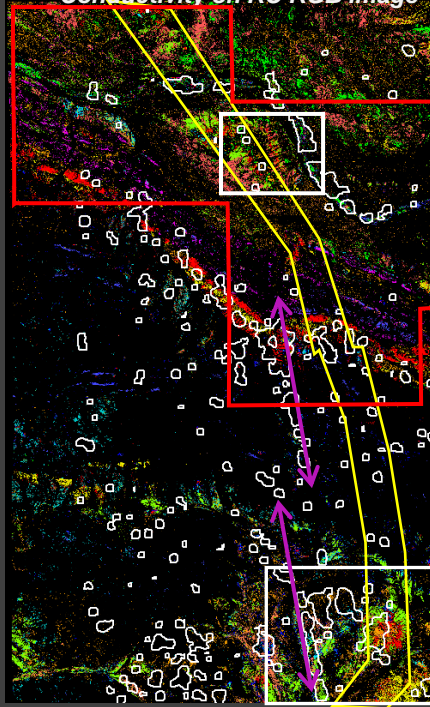
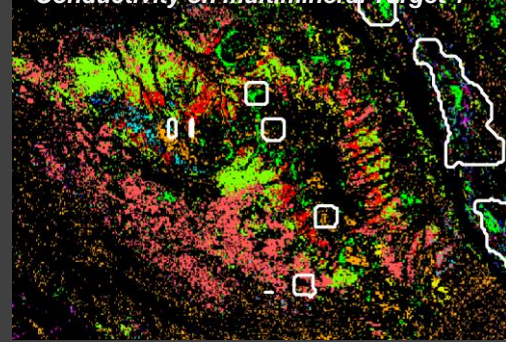
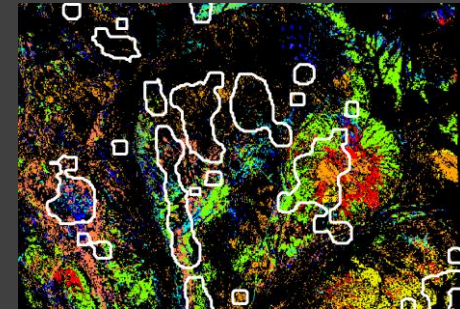
Paulsens Area



The non vegetation removed mineral mapping was carried out to map more of the chlorite in the area and also detail in the jog area of the ARUMA corridor of interest. This image also shows some similarity between the mineral mapping at Paulsens and Target 1. The mineral mapping from the Sentinel imagery shows a similar mapping of mineral distribution as seen in the AMS mineral maps. However, the mineral names given by DiRT do not match those determined from the AMS mapping, see comments above. However, the Paulsens and Target 1 areas show similar mineral units, also highlighting other similar areas - white circles. Note the Sentinel imagery was not vegetation masked.

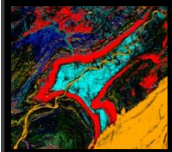
## ARUMA RESOURCES

PROJECT: MELROSE - Nanjilgardy

**Conductivity****DiRT Exploration – Sentinel Radar Conductivity  
Conductivity on RC RGB Image****Conductivity on multiminereral Target 1****Conductivity on multiminereral map Paulsens**

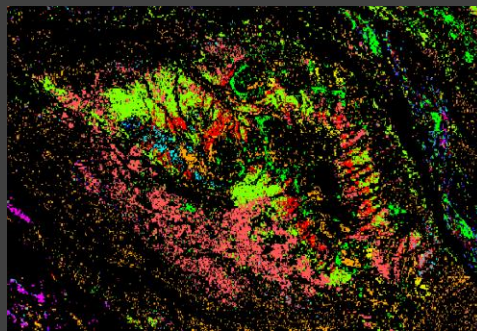
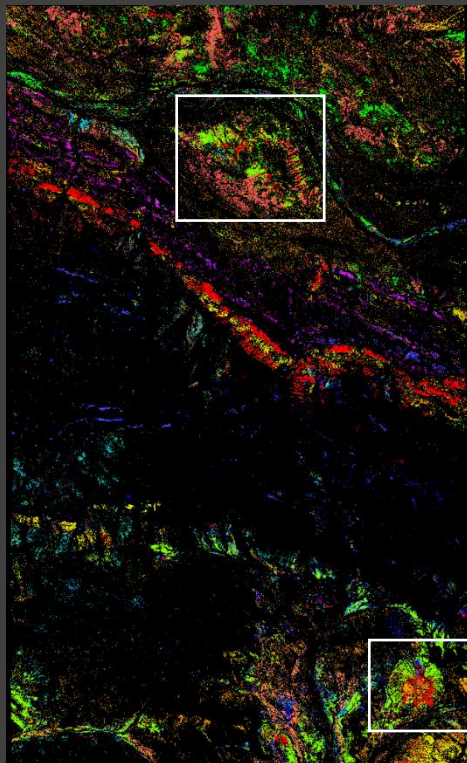
The conductivity derived from the Sentinel Radar is displayed as a pseudocoloured anomaly image (left) and as boundary shapefiles overlain onto the MM RC RGB mineral map (centre and right). Conductivity anomalies occur in both Paulsens area and Target 1. Within the ARUMA corridor are isolated anomalies but there is a distinct parallel zone of anomalies to the west which coincides with a major fault-linear (purple arrow), the western offset of which bounds the west of the Paulsens mine area. There are conductivity anomalies in the jog area of the ARUMA corridor.



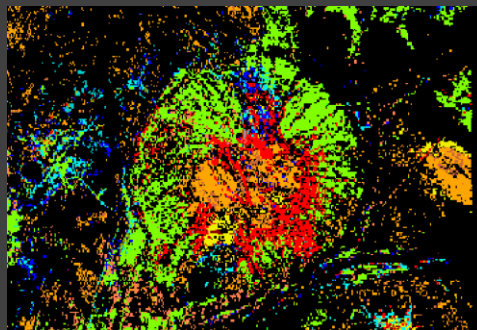


MINERAL MAPPING – TARGET MINERAL MAPS 1  
*Mineral Target 1*

*Rule Class Mineral Map*



*Paulsens Area*



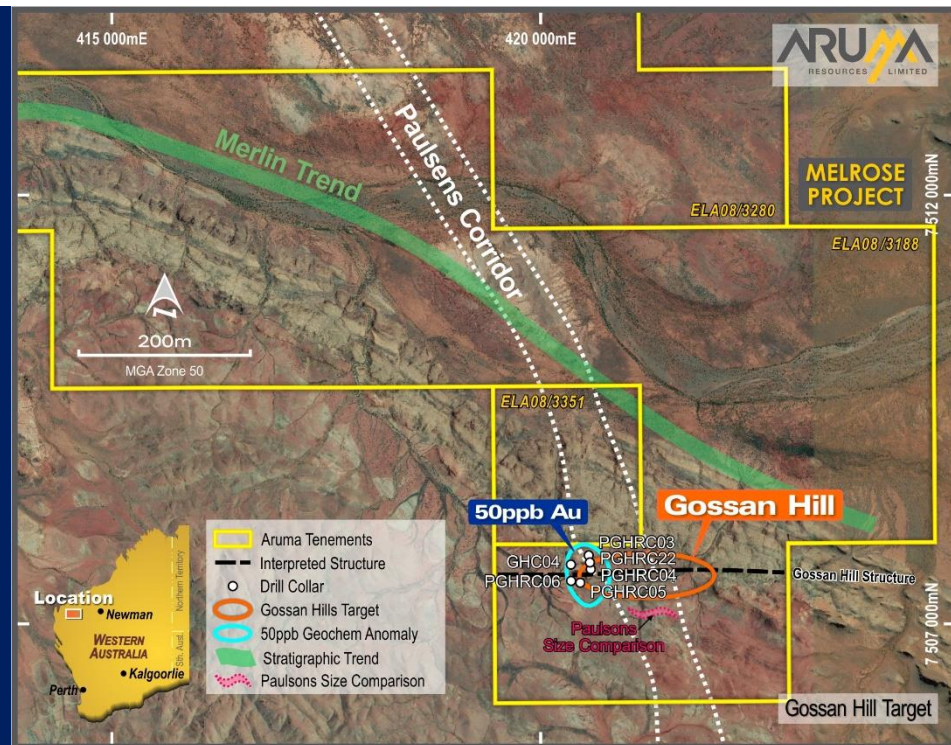
Note the similar pattern of minerals in the Target 1 to Paulsens area

- LEP
- SPOD MUS
- DIK OR HAL
- CAL SER
- HEM HAL
- PAR OR AMM ILL
- PAR CAL
- PAR CAL
- CAL SER 2
- CAL SER 1
- PROCHL
- AMP EPD
- NONT CAL 1
- NONT CAL 2
- NONT CAL 3
- DOL

# ➤ Melrose Gold Gossan Hill

- **Location** – 5km north of Paulsens Mine
  - >1moz Au produced
- **Structure** – Paulsens Corridor
  - Gossan Hill Structure >13km long
  - Merlin Stratigraphy >13km long
- **Orientation** – East West like Paulsens (shown in red to scale)
- **Gold Indicators from historic holes thick alteration halo**

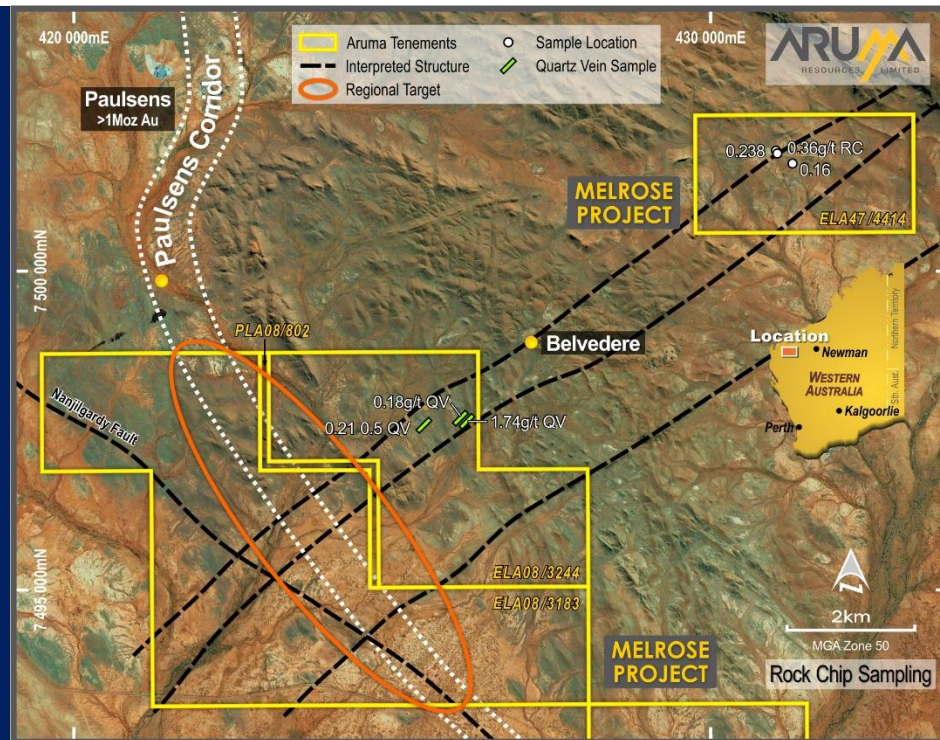
Drillhole Number	Depth from	length of zone	Avg. >0.1 Au g/t	1m >1g/t Au g/t	Depth from
GHC0004	8	11	0.42	2.74	14
GHC0005	0	29	0.14		
GHC0006	63	18	0.26	1.44	63
PGHRC03	7	4	0.1		
PGHRC04	49	14	0.25		
PGHRC22	0	27	0.3		





# ➤ Melrose Belvedere West

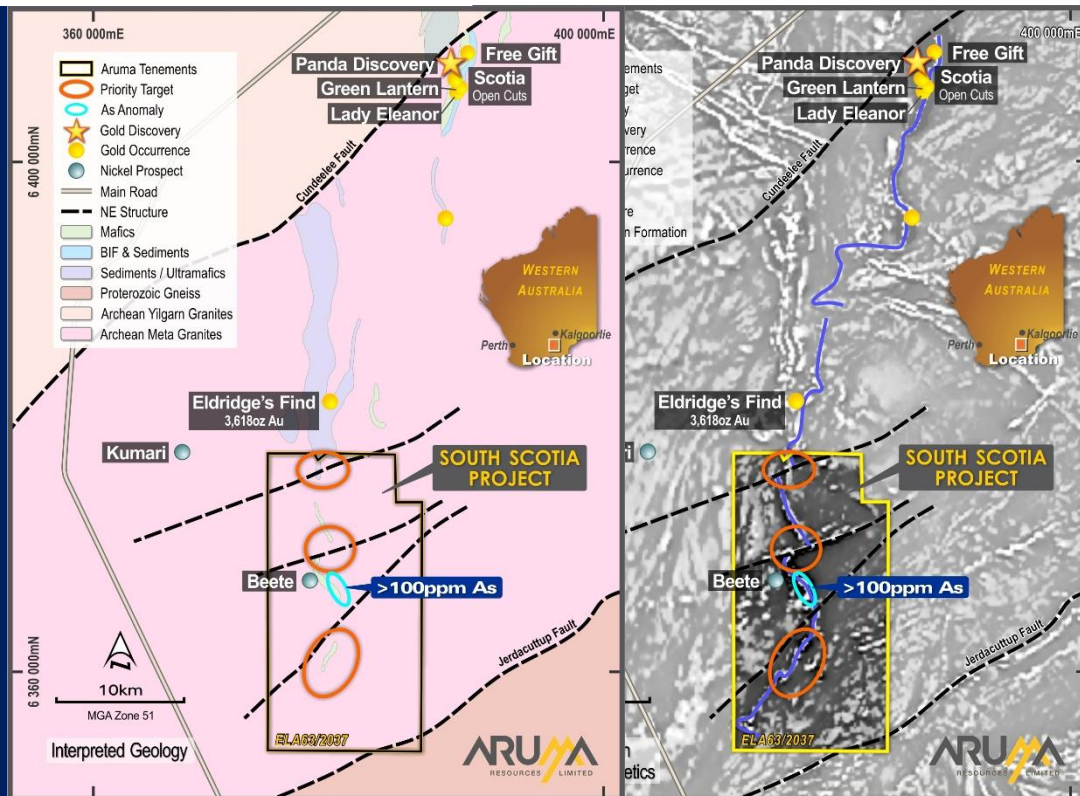
- **Location** – 5km from Paulsens Mine
  - On Belvedere structure
  - All leases now Aruma's
- **Structure** – Paulsens Corridor –
  - Belvedere Structure
- **Orientation** – East West like Belvedere
- **Gold Indicators** –
  - ELA08/3244 hosts 0.5m-wide quartz veins assaying up to 1.74g/t Au
  - ELA47/4414 has rock chip assays grading up to 0.36g/t Au





# ➤ Scotia South Gold Project

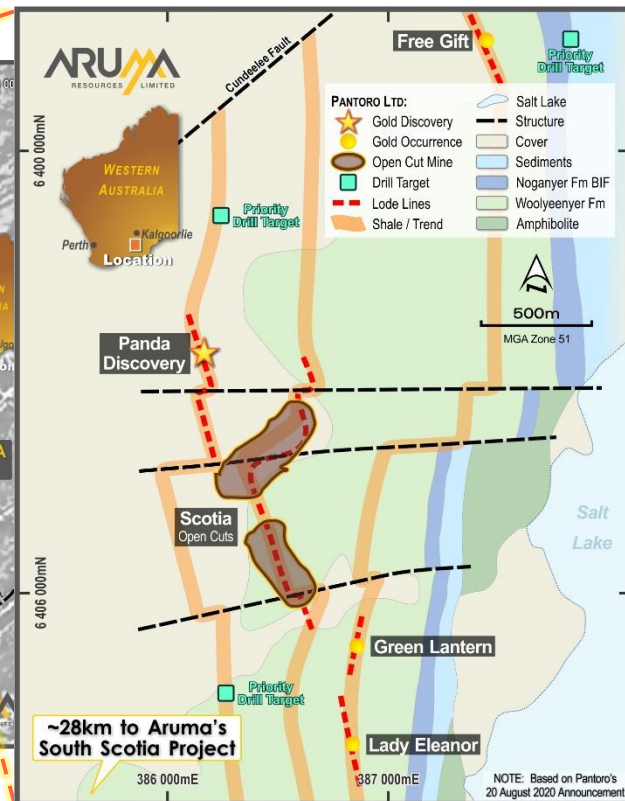
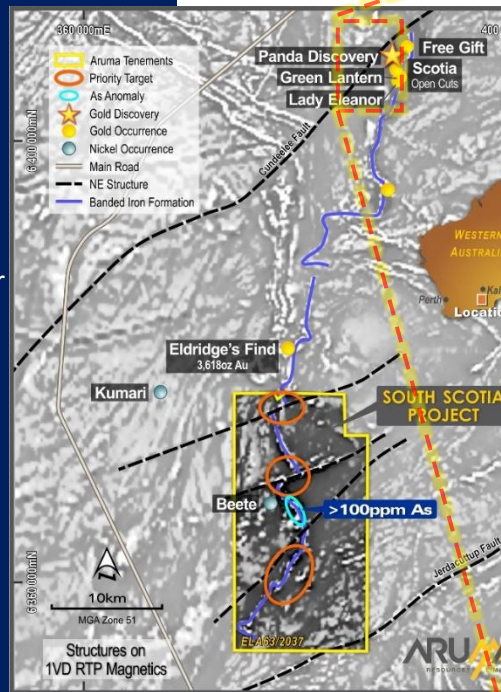
- **Location** – Extension of Norseman Wiluna Greenstone belt - not drilled for gold
- **Structure** – Major NE sutures similar to Panda Discovery
- **Geophysics** – Strong anomalies on structures
- **Area** – Large (202km<sup>2</sup>) strategic land holding on farmland now granted
- **Gold Indicators**
  - Just south of Beete-Aldridge's Find gold mine - Produced 3,650oz at 24g/t Au
  - Structural and gold control understood
  - Pantoro's new finds 250m west of BIF (ASX:PNR announcement 20 August 2020)



# ➤ Scotia South Gold Project

- **Pantoro(ASX:PNR)Results** – Multiple zones of mineralisation
- **Structure** – 250m to 1km west of magnetic BIF in 3 Zones
- **Stratigraphy** – Norseman – Scotia Multiple trends - interflow sediments stratigraphic control
- **Gold Intersections from PNR\***
  - Current combined resource 2.4Mt at 5.3g/t for 413Koz Au
  - Green Lantern intersections
    - 16m at 2.61g/t Au
    - 21m at 2.36g/t Au
    - 3m at 6.09 Au
  - Lady Eleanor
    - 10m at 2.06g/t Au
    - 11m at 1.7g/t Au
    - 2m at 11.25 Au

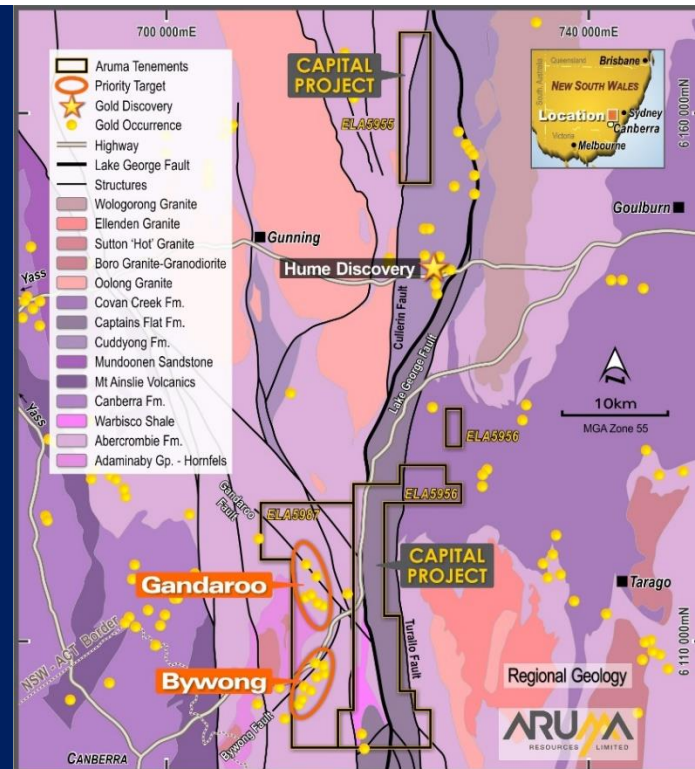
\* PNR announcement [29/10/2020]



NOTE: Based on Pantoro's 20 August 2020 Announcement

# ➤ Capital Gold Project

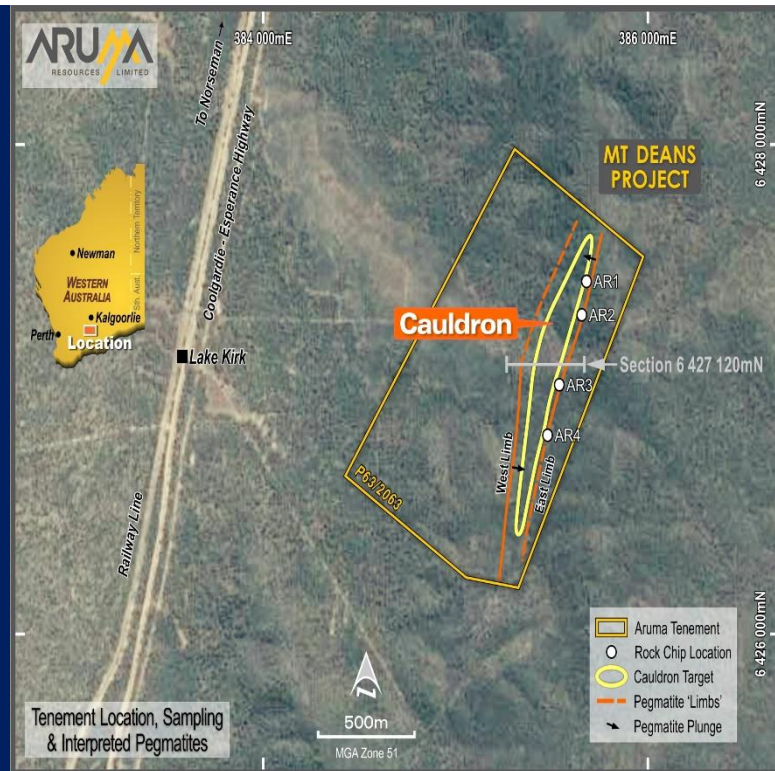
- **Location** – Lachlan Fold belt around historic Bywong gold area in NSW – site visit with local stakeholders completed
- **Leases** – Three leases approved for granting
- **Structure** – Lake George Fault- major crustal suture zone on splays similar to SKY's Hume discovery
- **Geology** – Hot granite driving hydrothermal gold in reactive sediments
- **Area** – Large (358km<sup>2</sup>) strategic land holding
- **Gold Indicators**
  - 1,500oz coarse gold produced from quartz veins in 1890s
  - Area underexplored for lode material with invisible gold
  - Structural and lithological control understood





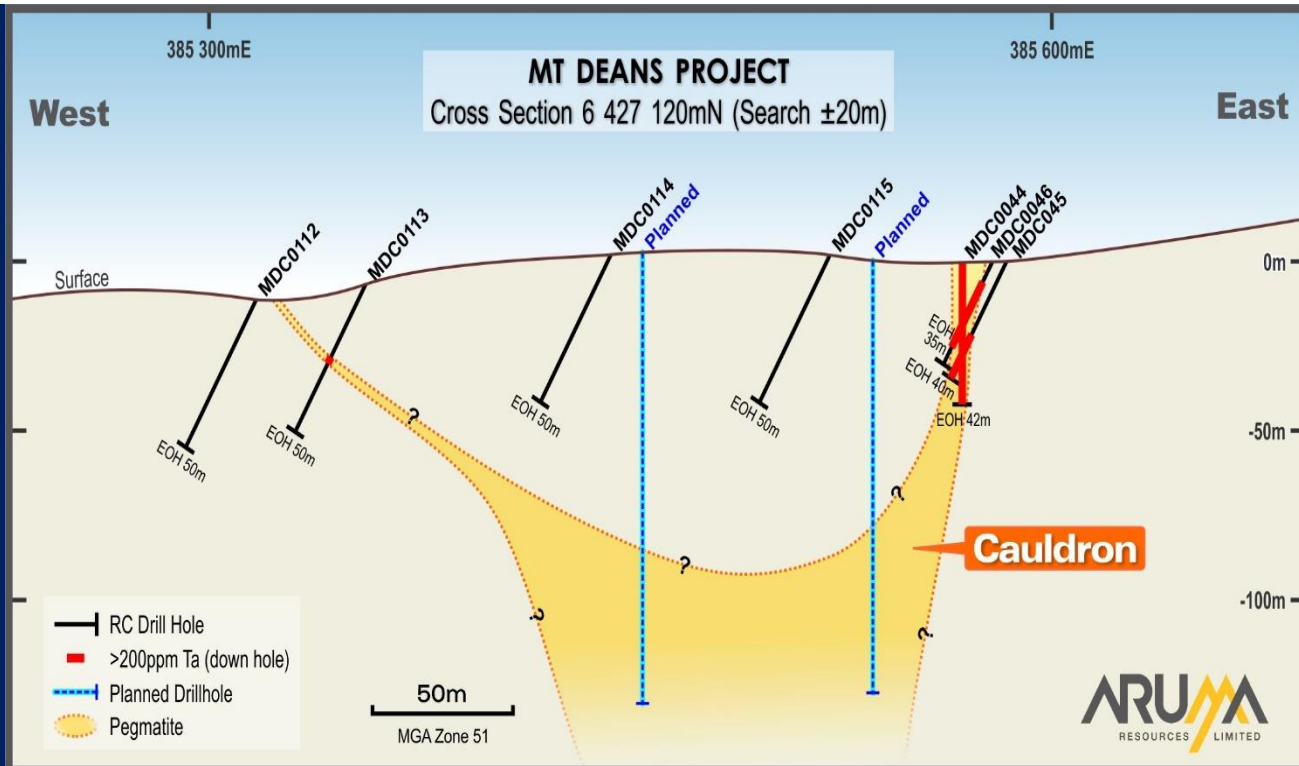
# ➤ Mt Deans Li Ta Project

- **Location** – 10km south of Norseman and <200km from Esperance Port
- **Leases** – One granted PL 1.44km<sup>2</sup>
- **Stratigraphy** – Eastern Goldfields Lithium corridor
- **Geology** – Hot granite driving pegmatite development in basalts
- **Area** – 1.44km<sup>2</sup> strategic land holding
- **Indicators** - Rock chip sampling program results;
  - Lithium oxide (Li<sub>2</sub>O) grades up to 2.1%;
  - Tantalum pentoxide (Ta<sub>2</sub>O<sub>5</sub>) up to 556 ppm;



# ➤ Mt Deans Li Ta Project

- **Location** – Project is has similar geology as the significant nearby Mt Marion, Bald Hill and Buldania Lithium Projects
- **Stratigraphy** – Eastern Goldfields Lithium corridor
- **Conservation Management Plan** – Approved by DBCA
- **PoW** –Submitted for up to 40 holes
- **Drilling** - Drilling planned for new year





## ➤ Ready For Large Gold and Li-Ta Discoveries

### COMPLETED

- ✓ 4 new gold projects (1,577 km<sup>2</sup>) secured and 100% owned
- ✓ 14 of 40 holes intersect gold >0.2g/t and confirm model at Saltwater
- ✓ \$3M cash in bank

### UPCOMING VALUE DRIVERS – DRILLING COMPLETED IN LAST QUARTER

- New gold endowed projects in underexplored areas will be granted and exploration started
- Saltwater and Capital Leases approved and ready for exploration
- New exciting projects attracting major investors
- New Exploration Manager on board
- WA Leases scheduled to be granted in April to May 2021



# EXPLORATION PIPELINE



## Saltwater

Gold in the Pilbara study

Pegged May-August  
Granted July - August

Heritage and  
drilling completed

Drilled 4,518m in 40  
holes completed

12 holes >0.3g/t  
Confirm Model  
New gold camp

## Melrose

Paulsens on care  
and maintenance

Gold in the  
Pilbara study

Mineral Mapping and  
Aster Conductivity

New Leases now cover  
majority of structures

Negotiations with TOs  
are underway

## Scotia

Search for new  
areas

Pantoro finds Panda  
Lease Application  
Data appraisal

RSHA Signed

Lease Granted

Landholder access  
negotiations

## Capital

Capital project purchased near  
Sky's Hume project

All leases Granted in Mid  
January

Community  
Consultation

Field Work  
underway

## Mt Deans

Mt Deans JV  
Terminated

Li Market improves with  
EV increase

Exploration  
Manager  
appointment

PoW submitted for  
drilling Cauldron

## ➤ Why Invest with Aruma?

*Active, targeted, ongoing in-ground exploration*

- Organic growth by project generation for large gold discoveries in Australia
- 100%-owned large prospective gold project areas near major gold deposits in underexplored areas
- Potential for multi million ounce gold discoveries demonstrated by recent discoveries in Pilbara-Norseman and NSW
- Major projects in Western Australia and NSW with sale of non core assets
- No debt, low spend with cash and receivables of \$3M
- Full database being assembled by Exploration Manager
- Systematic exploration and targeted drilling across key projects - R&D compliant for 43% rebate - over \$4M to date

Financial Year	2011	2012	2013	2014	2015	2016	2017	2018	2019	2020	Total
Total R&D \$	\$942K	\$837K	\$1.415M	\$1.149M	\$1.385M	\$759K	\$532K	\$1,158M	\$1,023M	\$372K	\$ 9,570,754
% Return	37.5%	45.0%	45.0%	45.0%	45.0%	45.0%	43.5%	43.5%	43.5%	43.5%	43.8%
Tax Benefit \$	\$353K	\$ 377	\$637K	\$517K	\$623K	\$342K	\$231K	\$504K	\$445K	\$162K	\$ 4,189,894

## **Contact Details**

### **Peter Schwann, Managing Director**

Aruma Resources Limited

Telephone: +61 8 9321 0177

M: +61 417 946 370

E: [info@arumaresources.com](mailto:info@arumaresources.com)

### **Media and Investor Relations**

James Moses

Mandate Corporate

M: +61 420 991 574

E: [james@mandatecorporate.com.au](mailto:james@mandatecorporate.com.au)