

22 October 2020

Manager Announcements
Company Announcements Office
Australian Securities Exchange Limited
Level 4, 20 Bridge Street
Sydney NSW 2000

INVESTOR WEBINAR PRESENTATION

Legend Mining Ltd ("Legend")(ASX: LEG) is pleased to announce its participation in the Share Cafe Webinar - Micro/Small Cap "Hidden Gems" Webinar to be held on Friday 23 October 2020 from 12:30pm AEDT / 9:30am AWST.

Legend's Managing Director Mark Wilson will provide an overview of the company's operations, "Mawson a Progressive Developing Story".

This FREE webinar is able to be viewed live via Zoom over the internet and will provide viewers the opportunity to hear from, and engage with, a range of ASX-listed leading micro/mid cap companies.

To access further details of the event and to register (for FREE), please copy and paste the following link into your internet browser:

https://us02web.zoom.us/webinar/register/WN_lhC2i3fET8GzqenYCrQq9g

A recorded copy of the webinar will be made available following the event. A copy of the investor presentation to be delivered during the webinar is attached.

Ends



SHARE CAFÉ
WEBINAR
23 OCTOBER 2020



Mawson – A progressive developing story

ASX: LEG

DISCLOSURE



This is not a disclosure document. Any material used in this presentation is a summary of selected data, and any investor in Legend Mining Limited should refer to all Legend Mining Limited ASX releases and statutory reports before considering to invest in the company.

Any forward looking information in this presentation has been prepared on the basis of a number of assumptions that may prove not to be correct. Neither Legend Mining Limited, nor its officers, employees and advisors make or give any representation, warranty or guarantee in relation to this presentation.

Legend Mining Limited reserves the right to update, amend or supplement the Information in this presentation at any time in its absolute discretion without incurring any obligation to do so.

The information in this report that relates to Exploration Results is based on information compiled by Mr Oliver Kiddie, a Member of the Australasian Institute of Mining and Metallurgy and a full-time employee of Legend Mining Limited.

Mr Kiddie has sufficient experience that is relevant to the styles of mineralisation and types of deposit under consideration, and to the activity being undertaken, to qualify as a Competent Person as defined in the 2012 Edition of the "Australasian Code for Reporting of Exploration Results, Mineral Resources and Ore Reserves" (JORC Code).

Mr Kiddie consents to the inclusion in the report of the matters based on his information in the form and context in which it appears.

ABOUT LEGEND – ASX:LEG



- Market capitalisation ~\$400M (Shares 2.7B@15c)
(Options – 75M@4c 3/2021; 149M@7.2c 7-9/2022)
- Cash and receivables ~ \$31.5M (includes \$2.25M receivable from Jindal) @ 30/09/2020
- Fraser Range – Rockford Project
- Top 20 Shareholders (65.2%)
 - Creasy Group (30.7%)
 - IGO (13.3%)
 - Bailey Group (5.4%)
 - Wilson Group (4.8%)
 - Remaining top 20 (11.0%)

Board of Directors



Chairman
Michael Atkins



Managing Director
Mark Wilson



Executive Director
Oliver Kiddie



Company Secretary
Tony Walsh

INVESTMENT CASE - FUNDAMENTALS

- ✓ Right People
 - Experienced corporate and technical team
 - JV Partners and major shareholders
 - Creasy Group (regional experience)
 - IGO (regional experience)
- ✓ Biggest block on best street (3,088km²)
- ✓ Nickel – Future Facing Commodity
- ✓ Strong cash position - \$31.5M @ 30/9/2020
- ✓ Systematic exploration approach ongoing
- ✓ Mawson Discovery – December 2019
 - RKDD023 & 027 – September 2020
- ✓ Expenditure budget ~\$11M for 2020

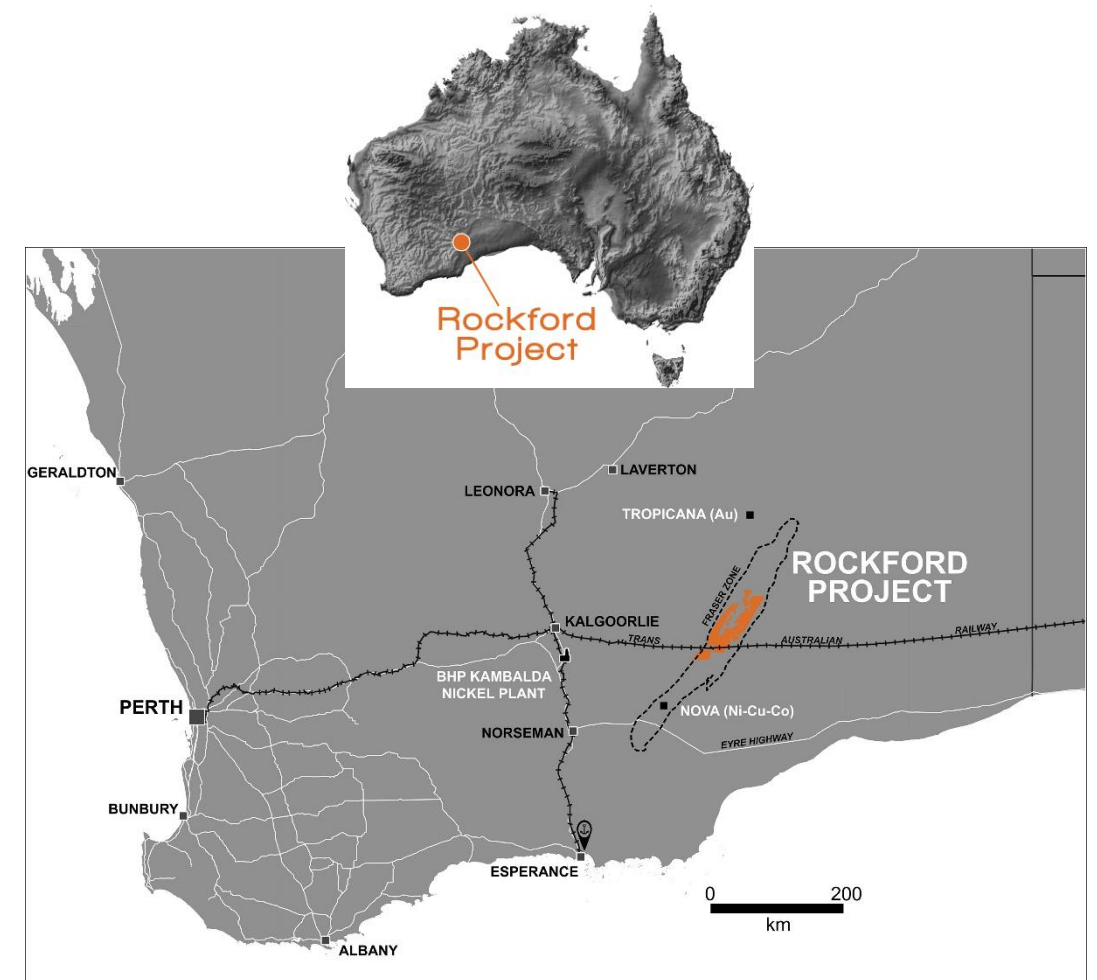


Legend five year graph
Exploration Success : The Value Driver

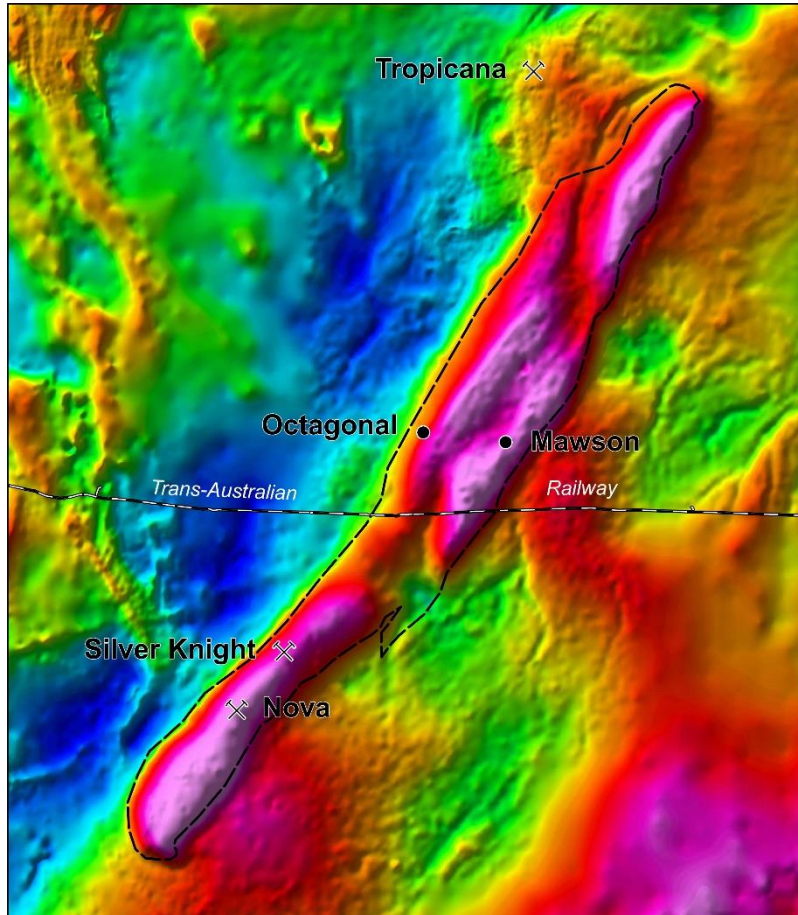
“Exploration success / regional recognition – price appreciation”

ROCKFORD PROJECT LOCATION

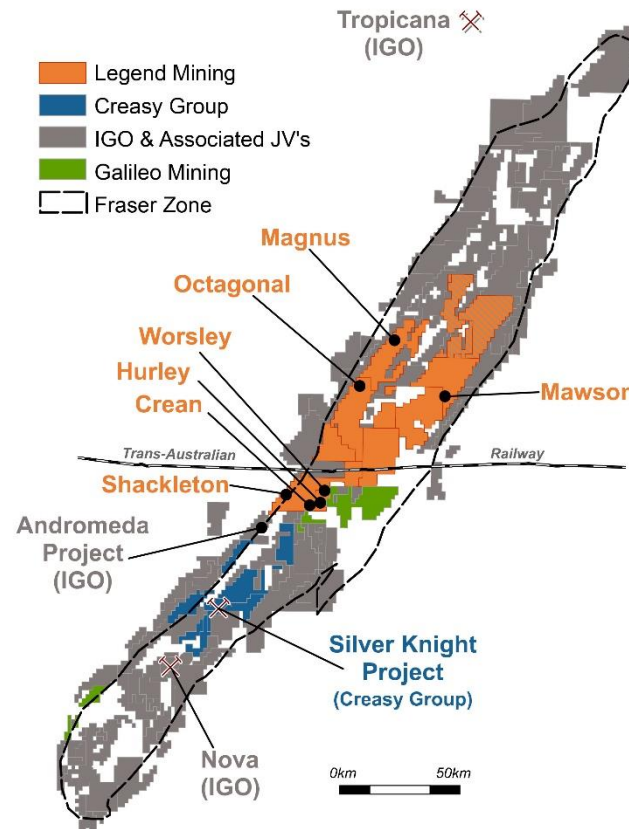
- Located in northern Fraser Range district
- 120km NE of Nova / 100km S of Tropicana
- 100% within Fraser Zone (19% of total area)
- Project potential for
 - Nova style Nickel-Copper
 - VMS style Copper-Zinc-Silver
 - Tropicana style Gold
- Infrastructure access – transport, power



FRASER ZONE LAND HOLDERS



FRASER ZONE - MAIN PLAYERS

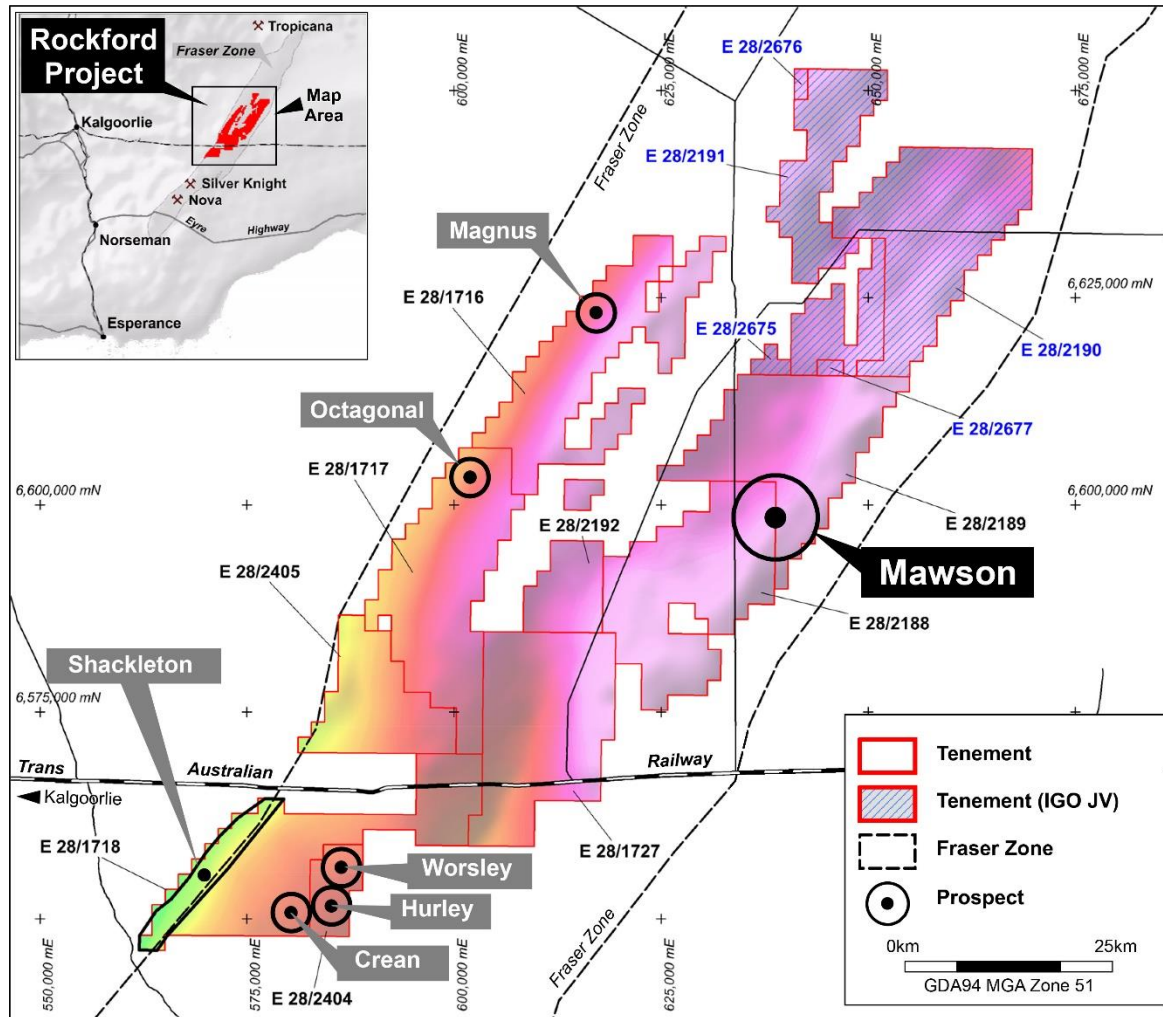


Main Players

	Legend Mining Active & Funded	
	Creasy Group Active & Private	
	IGO Active & ~\$2.6B MC	
	Galileo Mining Active & Funded	

- ✓ Regional spend producing results – value add
- ✓ Leverage play is Legend

ROCKFORD PROSPECT LOCATIONS

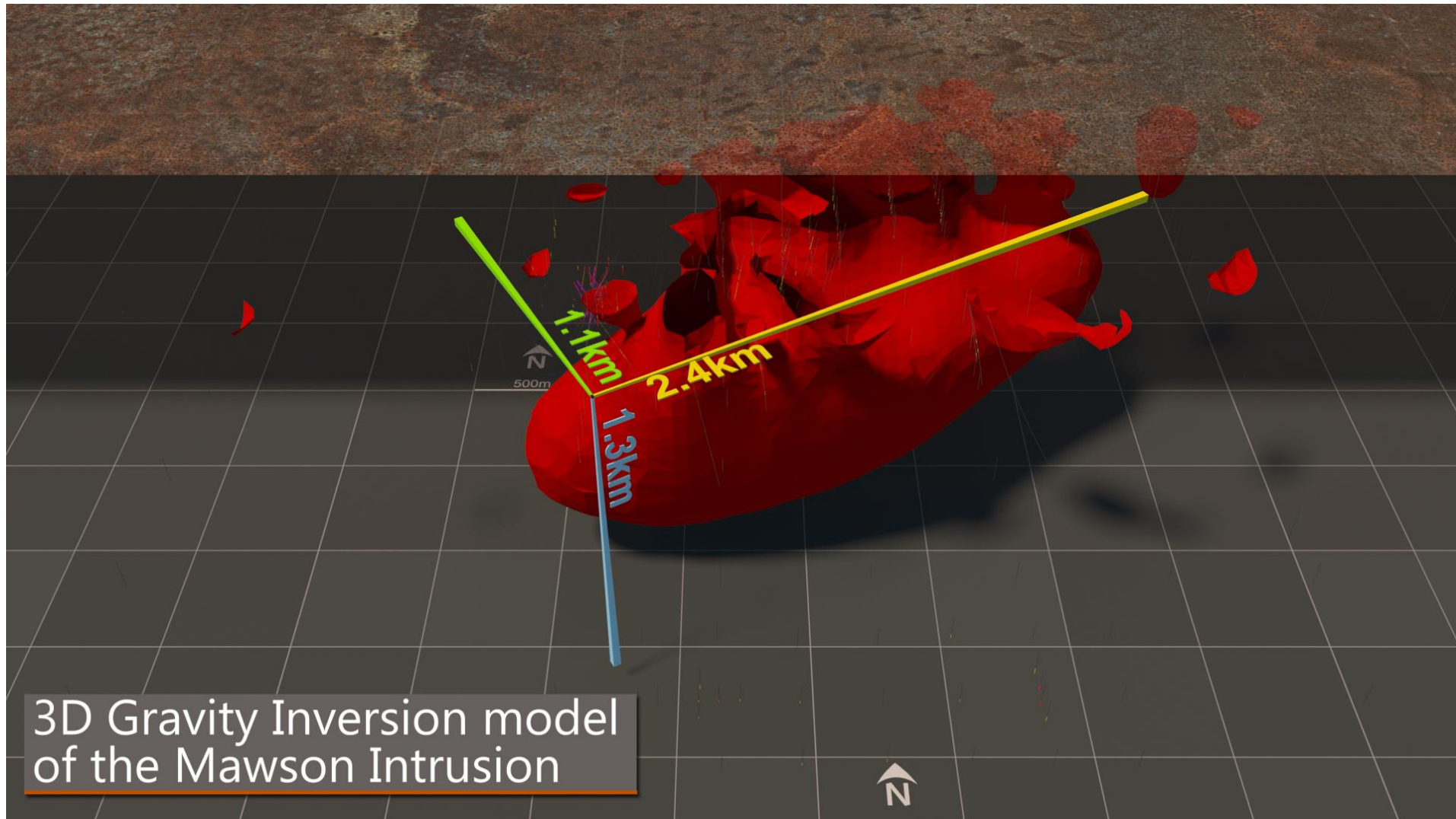


Rockford Prospect Locations

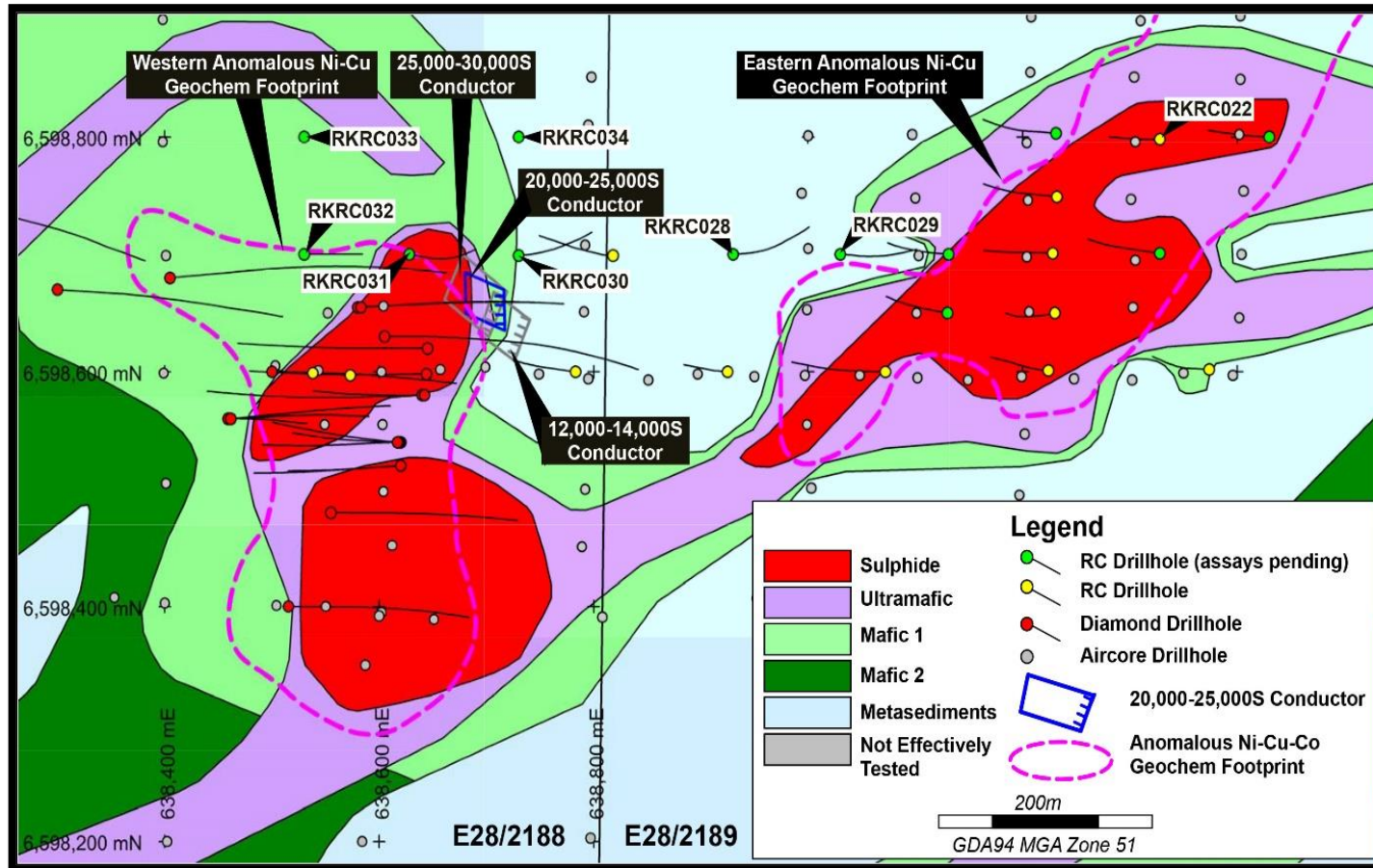
Regional Programmes

- Regional aircore programmes targeting co-incident mag lows/gravity highs/MLTEM conductors
- MLTEM success at Hurley
- Project scale geochem analysis highlights prospectivity at Crean & Hurley
- Follow up AC/RC/diamond drilling
- \$4M planned expenditure 2020

MAWSON 3D GRAVITY INVERSION MODEL



MAWSON DIAMOND, RC AND AIRCORE DRILLHOLE LOCATIONS



**DD and RC Drilling Locations over Mawson
Aircore Geology Interpretation**

Aircore Drilling

- Western and eastern geochemical footprint

RC Drilling

- Great tool for geology and DHTEM

DHTEM

- Targeting tool for diamond drilling

Diamond Drilling

- Massive sulphides in holes 7, 8, 11, 13, 17, 23 & 27
- Fourth publicly disclosed massive sulphides in Fraser Zone (Thompson Belt analogy)

DIAMOND DRILLHOLE RKDD021, 023 & 025

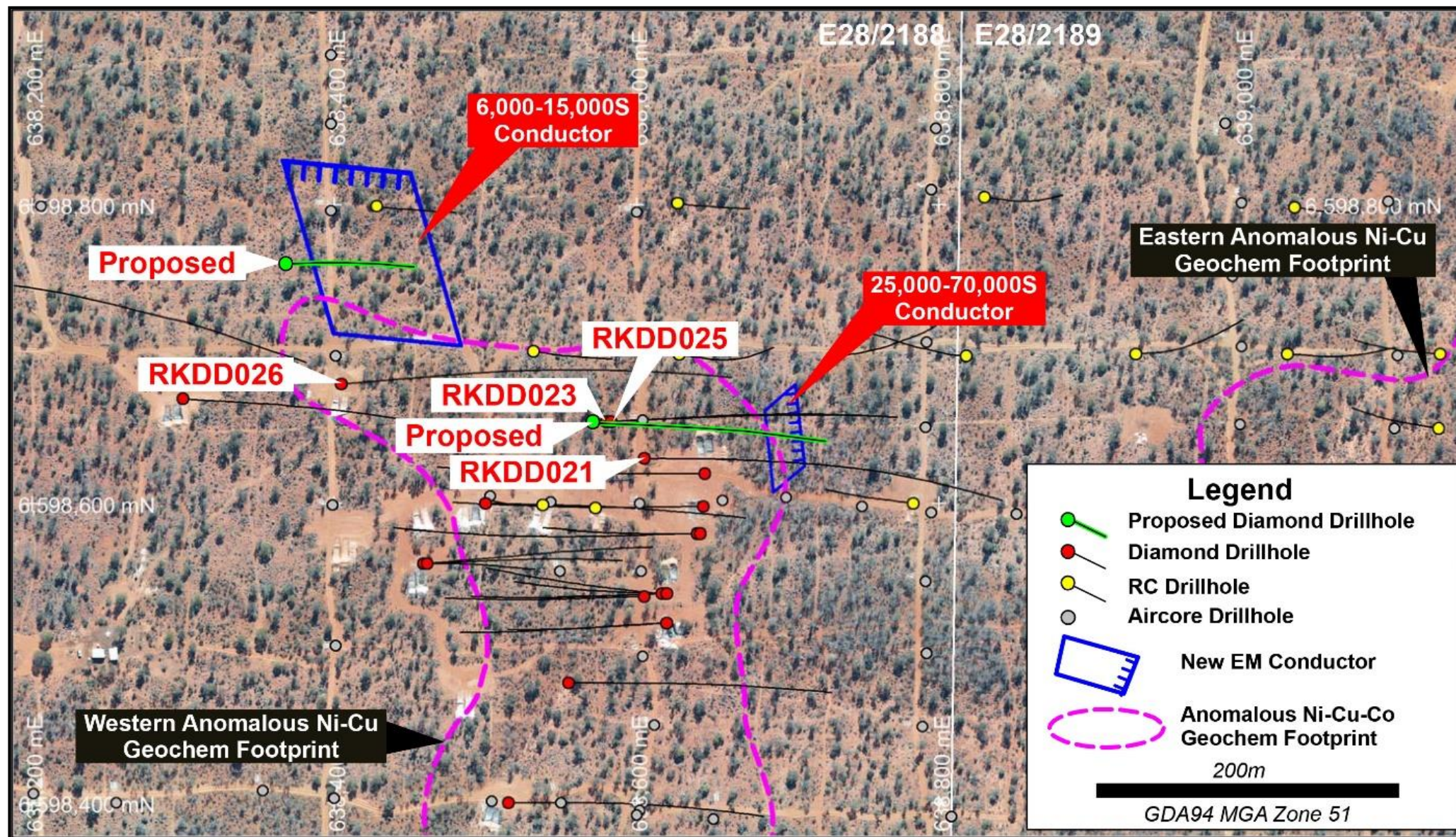


**Massive Ni-Cu Sulphide from
RKDD023 from 233m, NQ2**

RKDD021, 023 & 025

- Circa 200m from known mineralisation
- 12.95m massive sulphide intercepts (RKDD023)
- +90m mineralised intercept (RKDD023)
- Structural observations point to remobilised mineralisation
- DHTM plates show strong conductance and aerial extent

MAWSON DIAMOND DRILLHOLE & DHTEM CONDUCTOR LOCATIONS



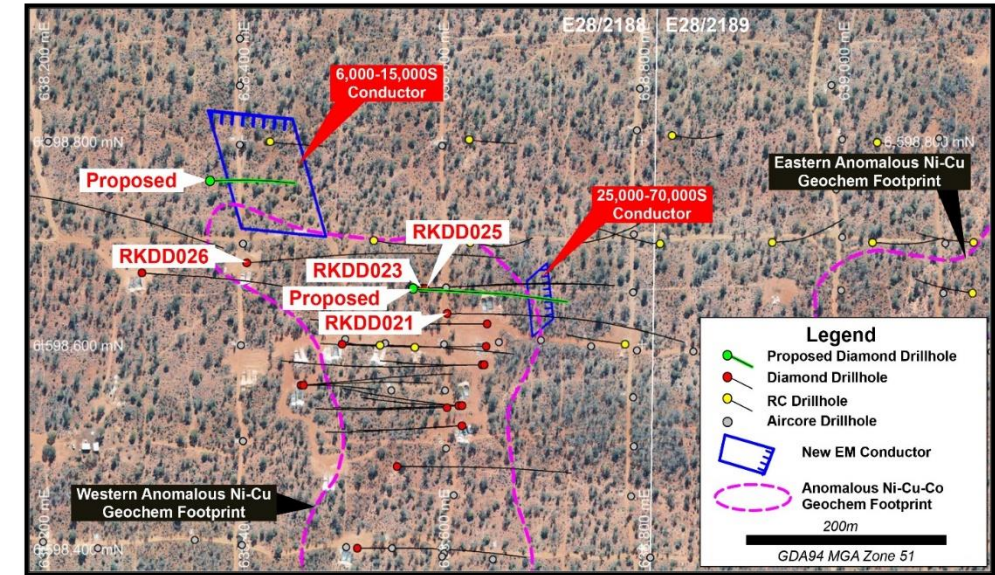
NEW DHTM CONDUCTORS

RKDD025 – Off hole conductor

- 25,000-70,000S very strong
- Below 90m of mineralisation in RKDD025 inc. 12.95 massive nickel-copper sulphides
- Model suggests strike of 80m

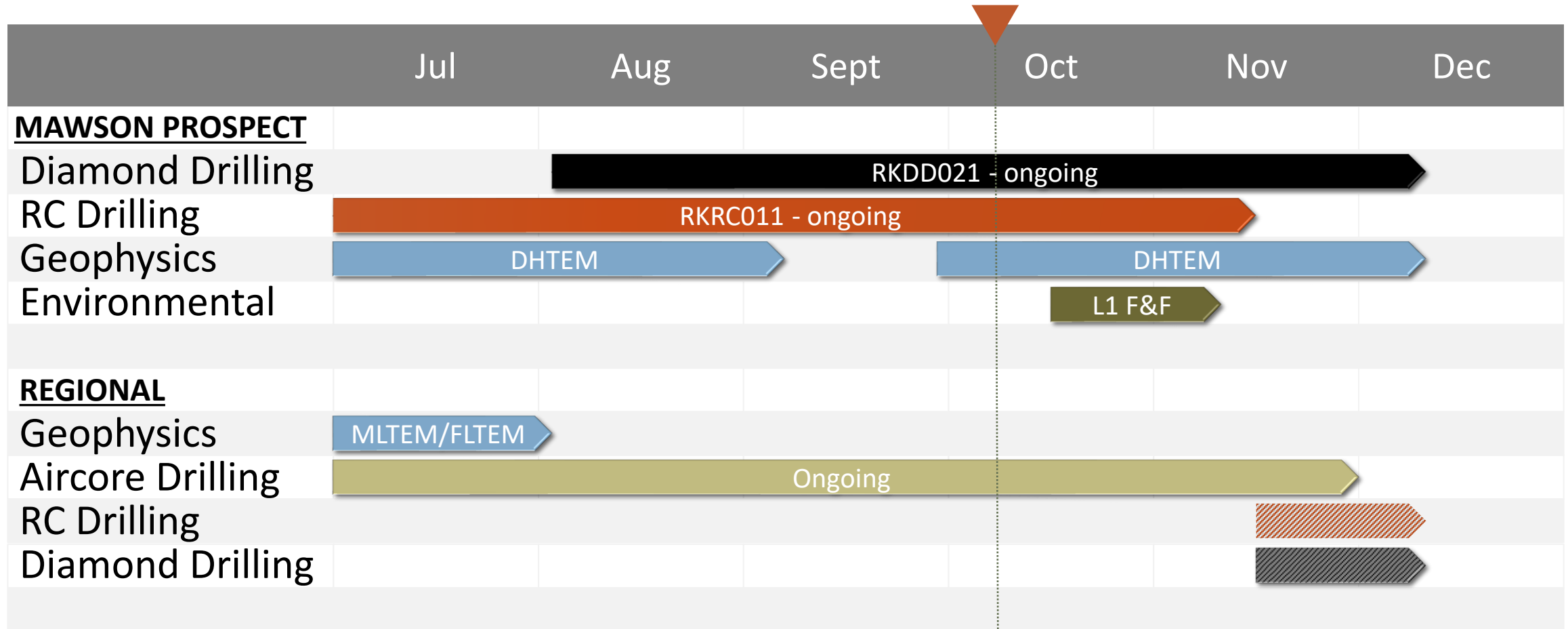
RKDD026 – Off hole conductor

- 6,000-15,000S moderate to strong
- 200m N-W of RKDD025
- Model suggests strike of 90m & plunge of 120m
- Mawson mineralisation footprint growing



Mawson Diamond Drillhole Locations

2020 WORK PROGRAMMES AT ROCKFORD



“Regular News Flow”

SUMMARY



ASX:LEG

- Highly Prospective Rockford Project
 - Mawson discovery Dec 2019 – quantum step forward
- Systematic/persistent/committed = going the distance!
- Well Funded
- Experienced Stable Team and JV Partners
- Grow Shareholder Value

“Highly leveraged to success”



Legend Mining Limited

www.legendmining.com.au

ASX : LEG