

# Advancing Walford Creek Cu-Co Project

Ord Minnett

East Coast Mining Conference

30 March 2022

ASX: AML



# Cautionary statement

This document has been prepared by Aeon Metals Limited (**Aeon**) for the purpose of providing a comprehensive company and technical overview to interested analysts and investors. This document is not a prospectus, product disclosure statement or other offering document under Australian law or any other law (and will not be lodged with the Australian Securities and Investments Commission or any other foreign regulator). Accordingly, this document is not, and does not constitute an offer or an invitation to acquire shares in Aeon or any other financial product.

The contents of this document are for information purposes only and are presented in summary form. It should be read in conjunction with Aeon's most recent financial report and Aeon's other periodic and continuous disclosure information lodged with the Australian Securities Exchange, which is available at [www.asx.com.au](http://www.asx.com.au).

This document reflects various technical and economic conditions at the time of writing, or projected future conditions based on an assessment of trends using currently available information. Given the nature of the resources industry, these conditions can change significantly over relatively short periods of time. Consequently, actual results and outcomes are likely to vary (whether more or less favourable) from those detailed in this document.

Any statements, opinions, projections, forecasts or other material contained in this document (**Information**) is presented by Aeon for use only by the company or person to whom it is presented and do not constitute any commitments, representations or warranties by Aeon or its officers, agents, employees or associates. Except as required by law, no responsibility or liability is accepted by Aeon or any of its officers, employees, agents or associates, nor any other person, for the Information or for any action taken by the recipient or any of the recipient's officers, employees, agents or associates on the basis of the Information.

No representation or warranty, express or implied, is made as to the fairness, accuracy or completeness of the Information, opinions and conclusions contained in this document or any other information Aeon or any other person otherwise provides to you. To the maximum extent permitted by law, Aeon and any other person disclaim all liability in connection with reliance on this document.

Forward-looking statements, opinions and estimates provided in this document are based on assumptions and contingencies which are subject to change without notice, as are statements about market and industry trends, which are based on interpretations of current market conditions. Accordingly, there can be no assurance that actual outcomes will not materially differ from these forward looking statements. Forward-looking statements include, but are not limited to, statements preceded by words such as "expect", "anticipate", "estimate", "intend", "believe", "guidance", "should", "could", "may", "will", "predict", "plan" and other similar expressions. These statements are provided as a general guide only and should not be relied upon as an indication or guarantee of future performance. Past performance information given in this document is given for illustrative purposes and should not be relied upon as (and is not) an indication of future performance. Aeon undertakes no obligation to revise the forward-looking statements included in this document to reflect any future events or circumstances after the date of this document, or to reflect the occurrence of unanticipated events, except as may be required under applicable securities laws.

The Information contained in this document does not constitute investment, legal, accounting, regulatory, taxation or other advice and does not take into account your investment objectives or legal, accounting, regulatory, taxation or financial situation or particular needs. Recipients of this document must make their own independent investigations, consideration and evaluation. By accepting this document, the recipient agrees that if it proceeds further with its investigations, consideration or investment evaluation, it shall make and rely solely upon its own investigations and enquiries, and will not in any way rely upon this document.

Except for statutory liability which cannot be excluded, Aeon, its officers, employees, agents and advisers expressly disclaim any responsibility for the accuracy or completeness of the material contained in this document and exclude all liability whatsoever (including in negligence) for any loss or damage which may be suffered by any person as a consequence of any Information in this document or any error or omission there from.

The distribution of this document in jurisdictions outside Australia may be restricted by law and you should observe any such restrictions. Any failure to comply with such restrictions may constitute a violation of applicable securities laws. In particular, this document may not be distributed or released in the United States.

# The Company

Aeon Metals Limited - ASX: AML



## VISION

Making a difference – creating sustainable value by delivering key metals driving the low carbon future.



## MISSION

We are focussed on embracing innovative approaches to source energy metals responsibly and sustainably to enhance the prosperity of the community, the environment and our shareholders through discovering, developing and operating our assets to their fullest potential.



## VALUES

Harnessing teamwork, recognising individual performance  
Accepting responsibility, relishing accountability  
Satisfying stakeholders, striving for personal satisfaction  
Showing respect, earning trust

## COMPANY SNAPSHOT

Enterprise Value	A\$80 million
Major shareholder	OCP Asia (44.8%)
Top 20 shareholders	70%
Exploration Tenements	4,445m <sup>2</sup>
Major Project	Walford Creek (100%)

## BOARD

Paul Harris	Over 28 years' experience in financial markets and resources investment banking. Previously MD, Head of Metals and Mining at Citi.
Dr Fred Hess	Over 40 years' experience in mining project development and operations in senior management roles across the Asia Pacific region. Former MD of ASX listed PanAust Ltd which was acquired by GRAM for A\$1 billion in 2014.
Ivan Wong	Over 27 years' experience in running various businesses in Australia. Mr Wong has well established connections in China.
Andrew Greville	International mining executive with over 36 years' experience and a track record of success in business development, M&A, product marketing and strategy.

# Investment highlights

## Applying a fresh approach to a globally significant copper and cobalt project

### Responsibly sourced future energy metals

- Our flagship Walford Creek Project is located in north-west Queensland, a Tier 1 jurisdiction for ethical sourcing of mineral products
- Walford Creek is set to produce copper, cobalt, zinc, silver and nickel; key metals of the low carbon future

### High-value metal end-products

- Total production of 590 kt CuEq and nameplate annual output of ~50 kt CuEq over an initial operating life of 14 years
- Planned end products are a mix of high value refined metals and battery precursor nickel/cobalt sulphates

### Highly leveraged to Cu and Co prices

- Globally competitive upfront capital intensity of ~US\$15,000 per tonne annual CuEq and attractive AISC of US\$2.0 – 2.2/lb CuEq
- Ungeared, real, post-tax NPV<sub>8%</sub> of A\$375 – 805 m with projected LOM net free cash flows of A\$1,200 – 1,900 m

### Defined study and development pathway

- Scoping Study completed in June 2021; conventional open pit and underground mining with bulk flotation & leaching
- PFS due in Apr 2022

### Substantial potential exploration upside

- Drilling program completed in 2021 – upgrade to Walford Creek Mineral Resource Estimate in March 2022
- Proposed drilling campaign for 2022 to target resource extension and new target areas

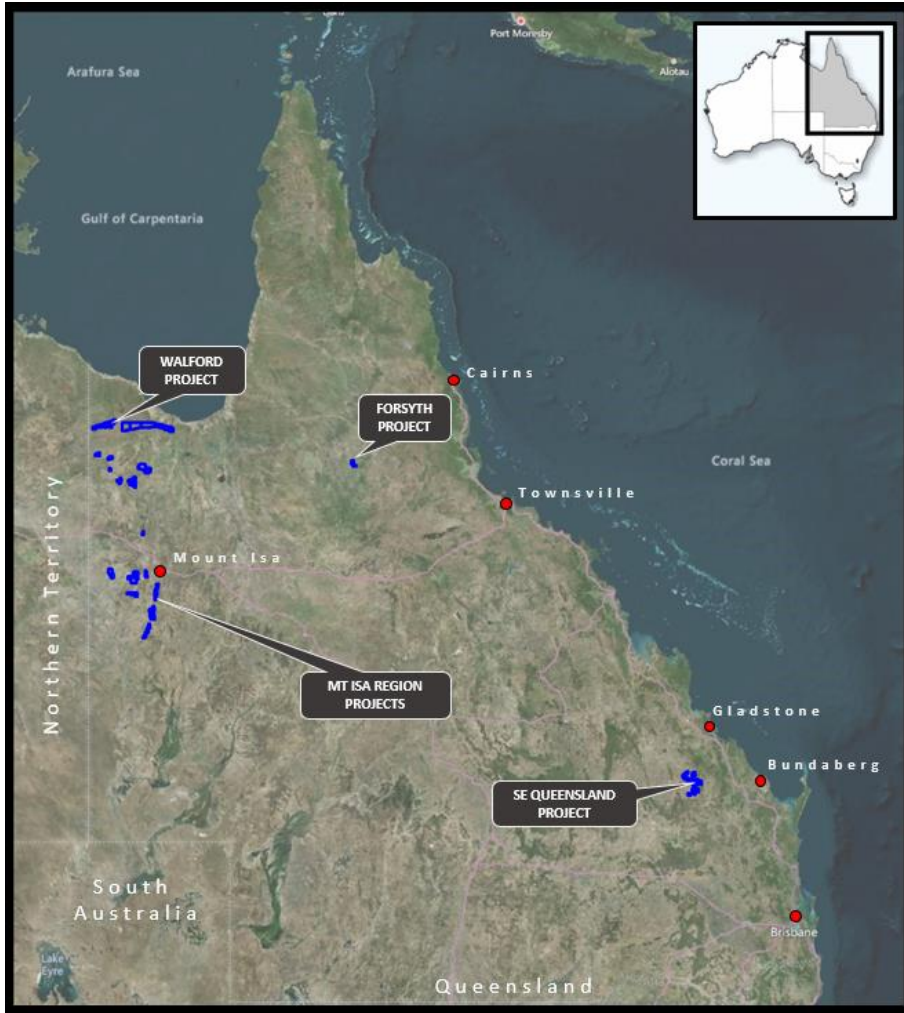
### Refreshed and enhanced management team

- Experienced metallurgist, Dr Fred Hess, recently appointed MD & CEO (former MD of PanAust)
- Strong Board, technical team and leading external consultants



# Extensive Queensland Tenement Package

Flagship Walford Creek Project plus 4,445 km<sup>2</sup> base metal prospectivity



## Walford Creek Project (100%)

- World class copper province
- >90,000 m drilling over past 5 years
- ~44 Mt polymetallic Mineral Resource underpins development
- Significant near resource, fault bound, strike extension
- Regional upside with >100 km strike of basin edge
- A substantial copper/cobalt development
- Highest grade significant cobalt deposit in Australia

## Other North-West Queensland

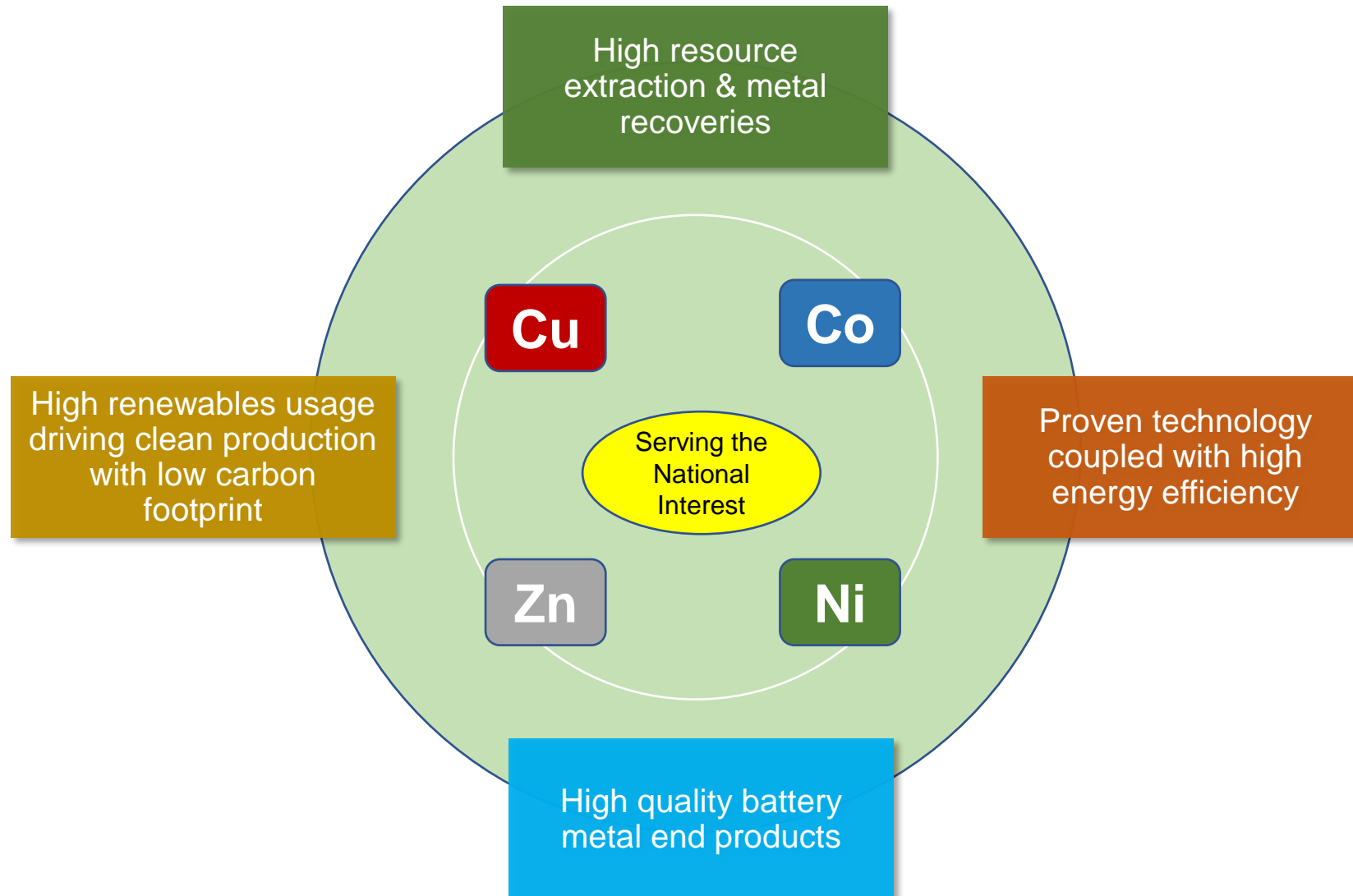
- Tenement package refined over last 3 years
- Large IOCG system discovered 100km west of Mount Isa
- Multiple drill ready targets

## South-East

- Large porphyry style geology
- Close proximity to infrastructure

# Towards carbon neutrality

Producing battery metals using battery metals made with renewable energy



# Mineral resources

Updated in March 2022

## *Vardy/Marley Copper Mineral Resource (Mar 2022 - 0.5% Cu cut-off)*

Category	Mt	Cu %	Pb %	Zn %	Ag ppm	Co %	Ni %	Pyrite %
Measured	7.3	1.14	1.07	0.89	28.4	0.15	0.06	42.
Indicated	12.1	1.04	1.01	0.66	31.5	0.15	0.07	38.6
Inferred	0.7	1.05	1.09	0.70	38.9	0.14	0.06	42.7
<b>Total</b>	<b>20.1</b>	<b>1.08</b>	<b>1.03</b>	<b>0.75</b>	<b>30.6</b>	<b>0.15</b>	<b>0.06</b>	<b>40.1</b>

## *Vardy/Marley Cobalt Peripheral Mineral Resource (Mar 2022 - 600ppm Co cut-off on blocks outside of Copper Mineral Resource)*

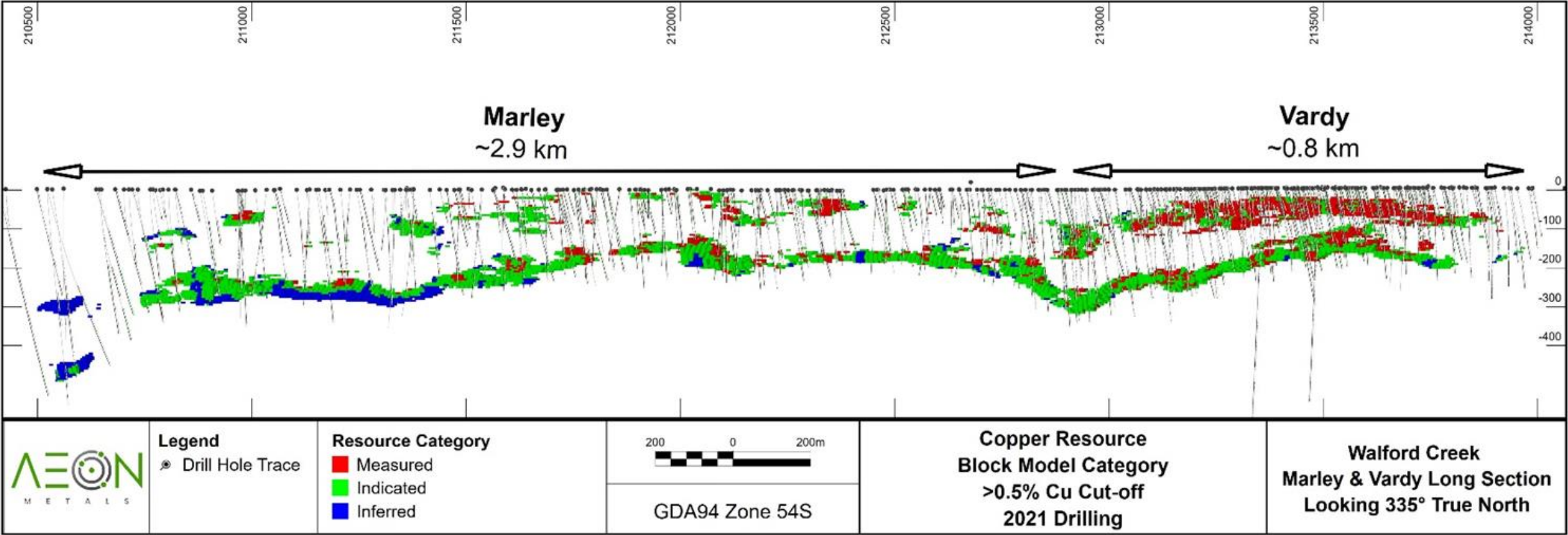
Category	Mt	Cu %	Pb %	Zn %	Ag ppm	Co %	Ni %	Pyrite %
Measured	7.6	0.24	0.87	1.23	19.8	0.10	0.04	43.0
Indicated	11.1	0.26	0.97	1.03	21.9	0.09	0.04	38.2
Inferred	0.5	0.23	1.74	0.91	26.9	0.10	0.04	36.6
<b>Total</b>	<b>19.2</b>	<b>0.25</b>	<b>0.95</b>	<b>1.11</b>	<b>21.2</b>	<b>0.10</b>	<b>0.04</b>	<b>40.1</b>

## *Amy Copper Mineral Resource (Apr 2021 - 0.5% Cu cut-off)*

Category	Mt	Cu %	Pb %	Zn %	Ag ppm	Co %	Ni %	Pyrite %
Inferred	5.1	1.25	1.35	0.63	36.9	0.15	0.08	37.7

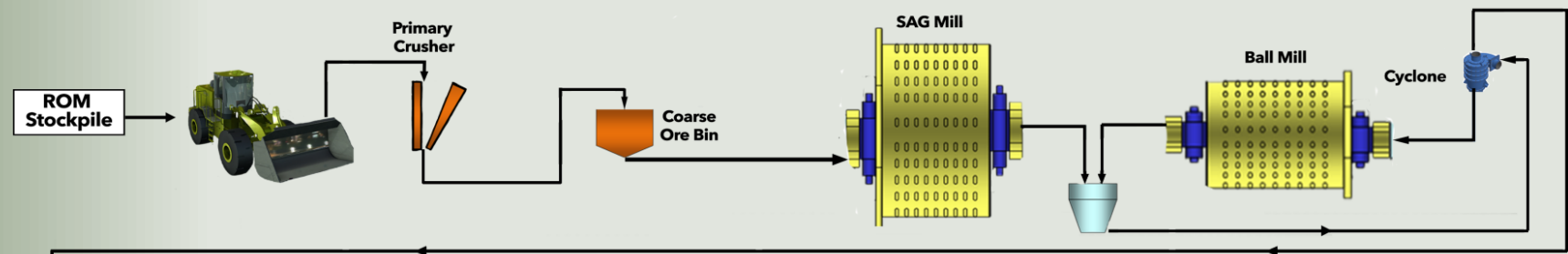
# Marley and Vardy

97% measured and indicated

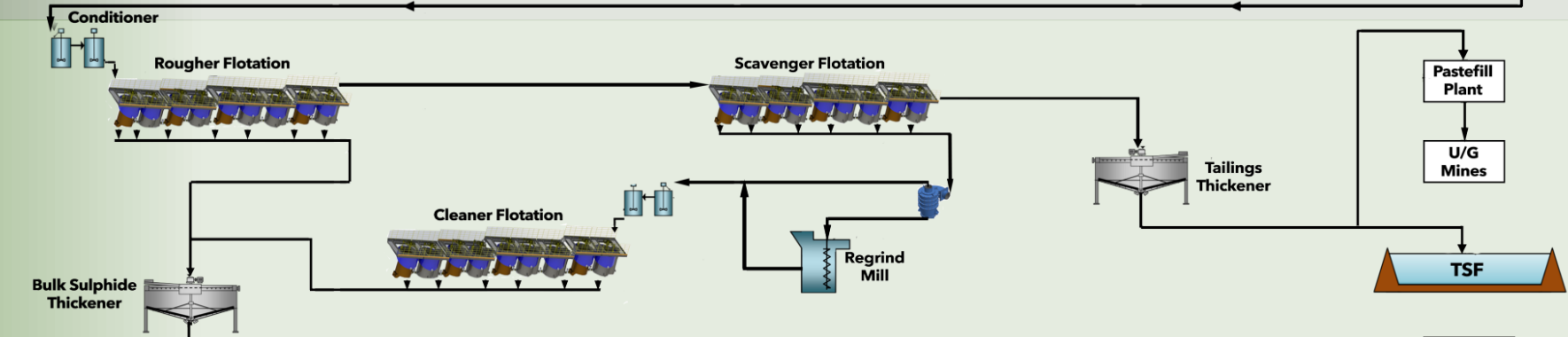




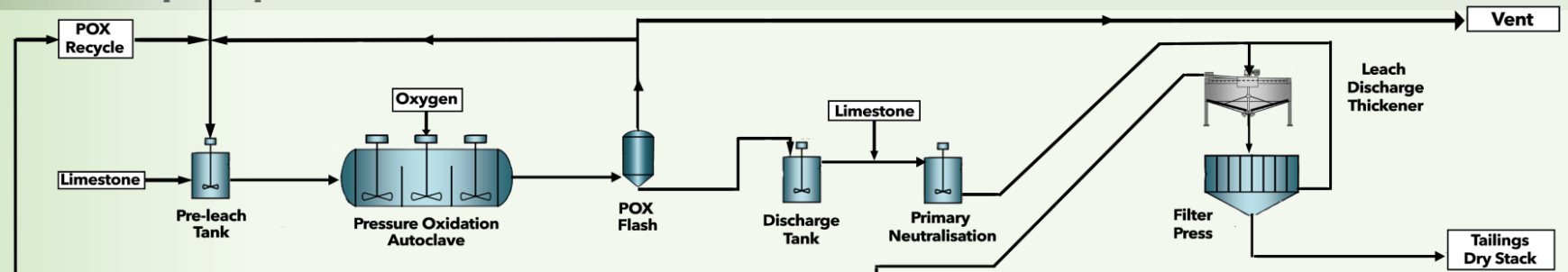
# COMMINUTION



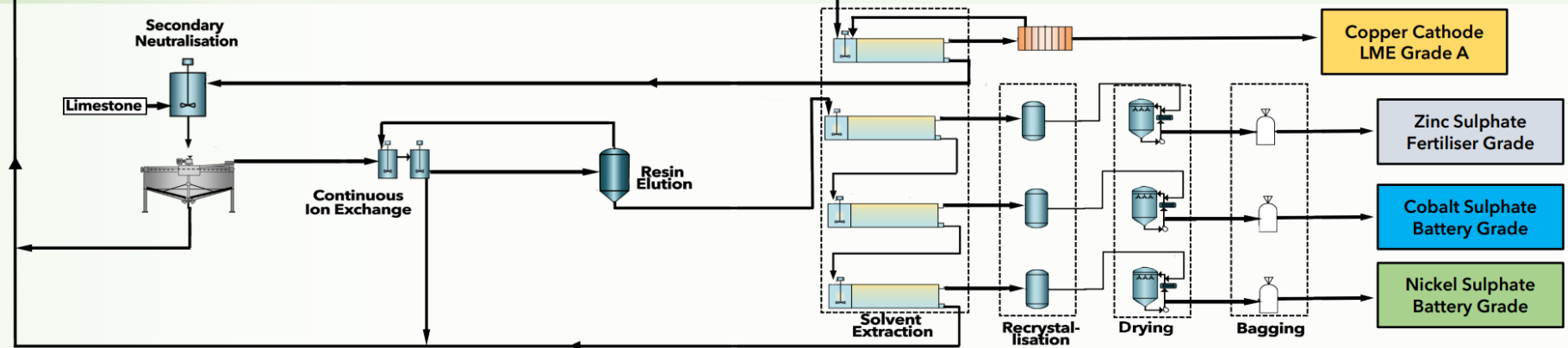
# FLOTATION



# LEACHING



# REFINING



# The battery metal end products

Production of multiple metals delivers revenue with in-built portfolio risk reduction

## Copper Cathode

Cu metal  
LME A grade - 99.99% Cu  
100% LME payable  
Production ~20 ktpa Cu  
Spot Price - US\$10,300/t  
Revenue - ~US\$205 mpa

## Cobalt Sulphate

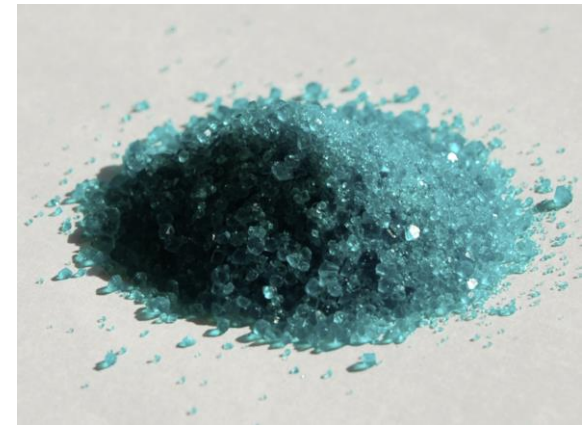
$\text{CoSO}_4 \cdot 7\text{H}_2\text{O}$  (21% Co)  
Battery grade - 99% purity  
100-130% LME payable  
Production ~2.8 ktpa Co  
Spot Price - US\$81,850/t  
Revenue - ~US\$230 mpa

## Zinc Sulphate

$\text{ZnSO}_4 \cdot 7\text{H}_2\text{O}$  (22% Zn)  
Farm grade - 99% purity  
100-120% LME payable  
Production ~23 ktpa Zn  
Spot Price - US\$3,900/t  
Revenue - US\$90 mpa

## Nickel Sulphate

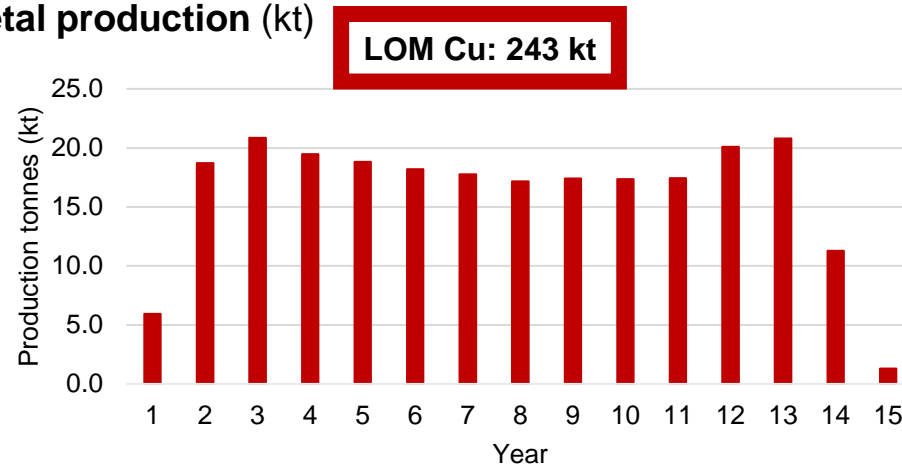
$\text{NiSO}_4 \cdot 6\text{H}_2\text{O}$  (22% Ni)  
Battery grade - 99% purity  
110-130% LME payable  
Production ~1.1 ktpa Ni  
Spot Price - US\$28,100/t  
Revenue - US\$31 mpa



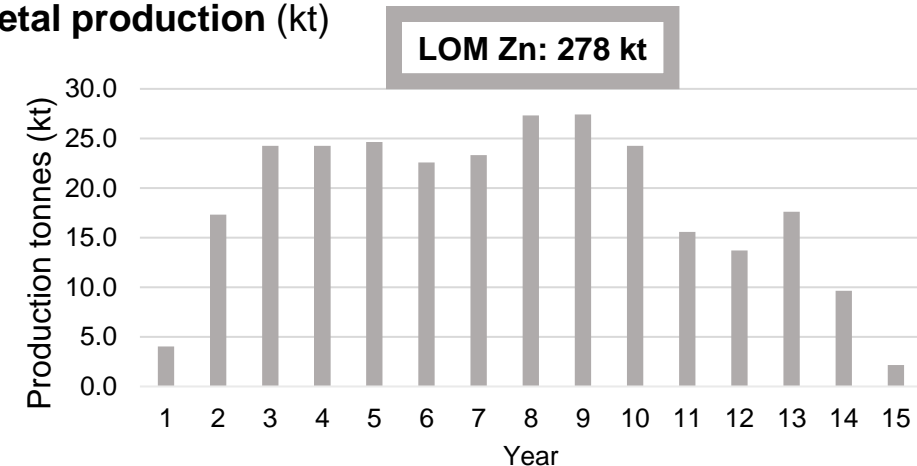
# Life-of-mine portfolio metal output

Walford Creek to deliver 590 kt CuEq at ~50 kt nameplate CuEq over an initial 14-year life

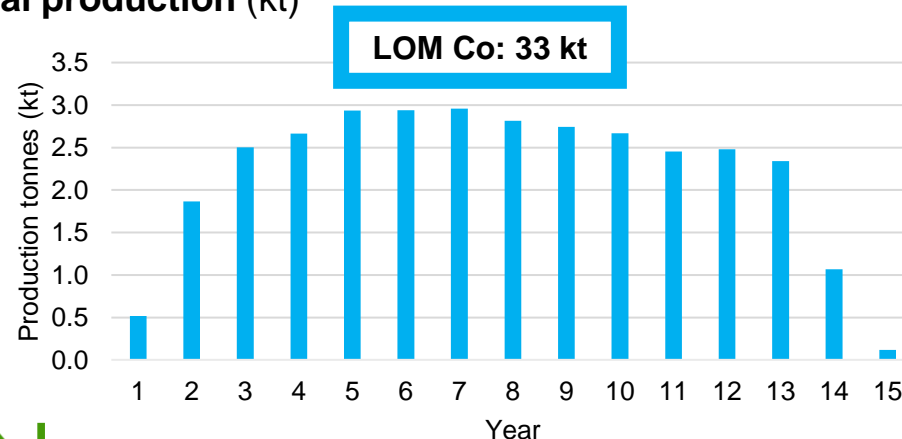
Copper metal production (kt)



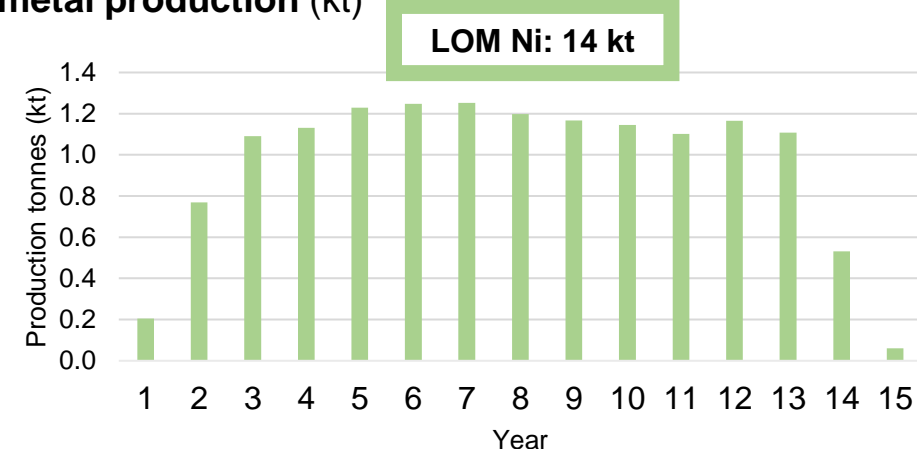
Zinc metal production (kt)



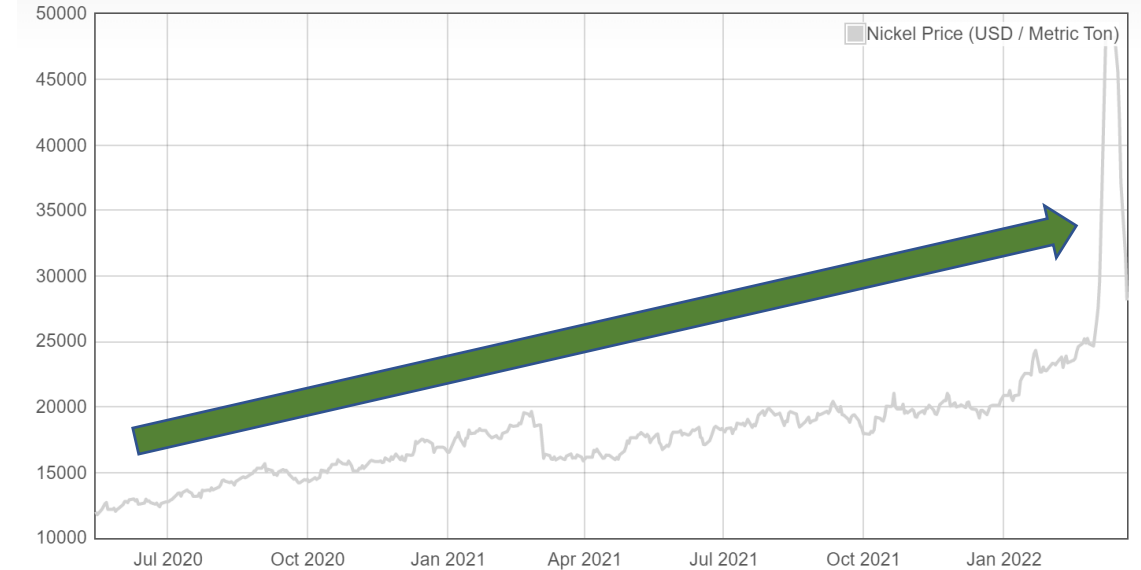
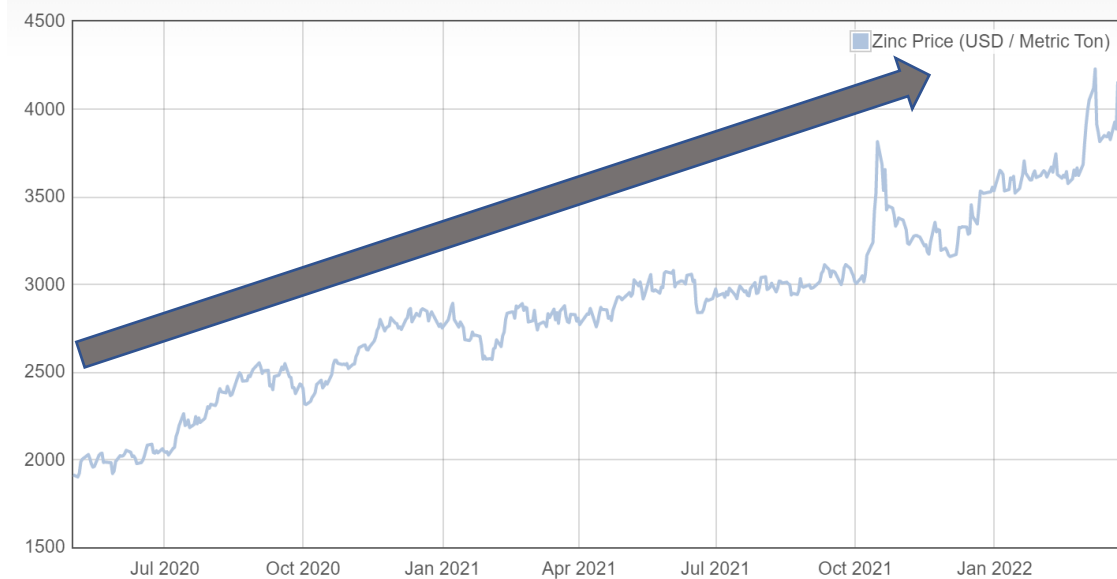
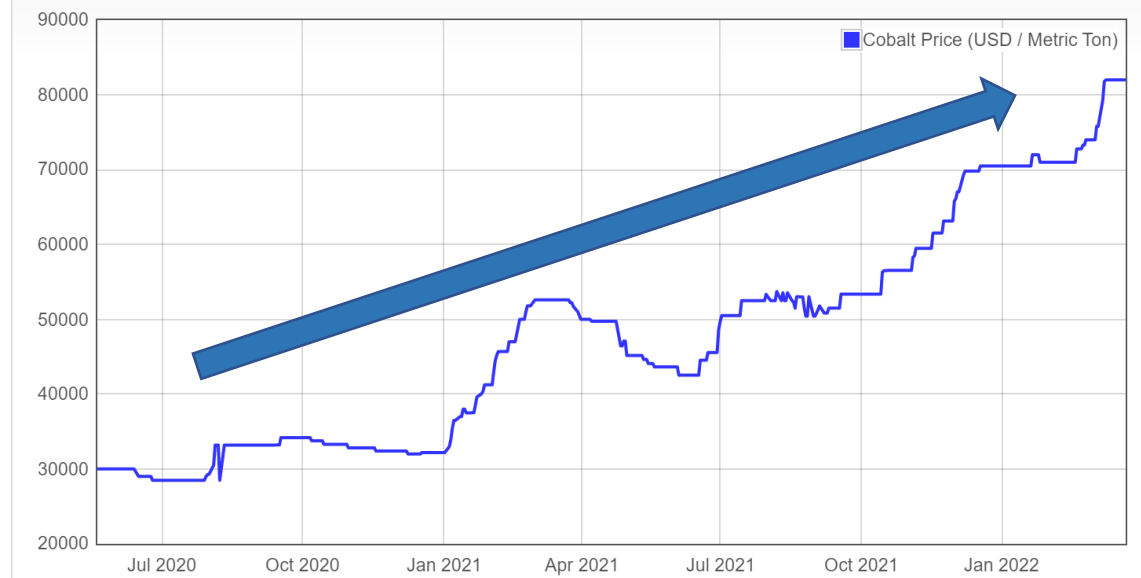
Cobalt metal production (kt)



Nickel metal production (kt)



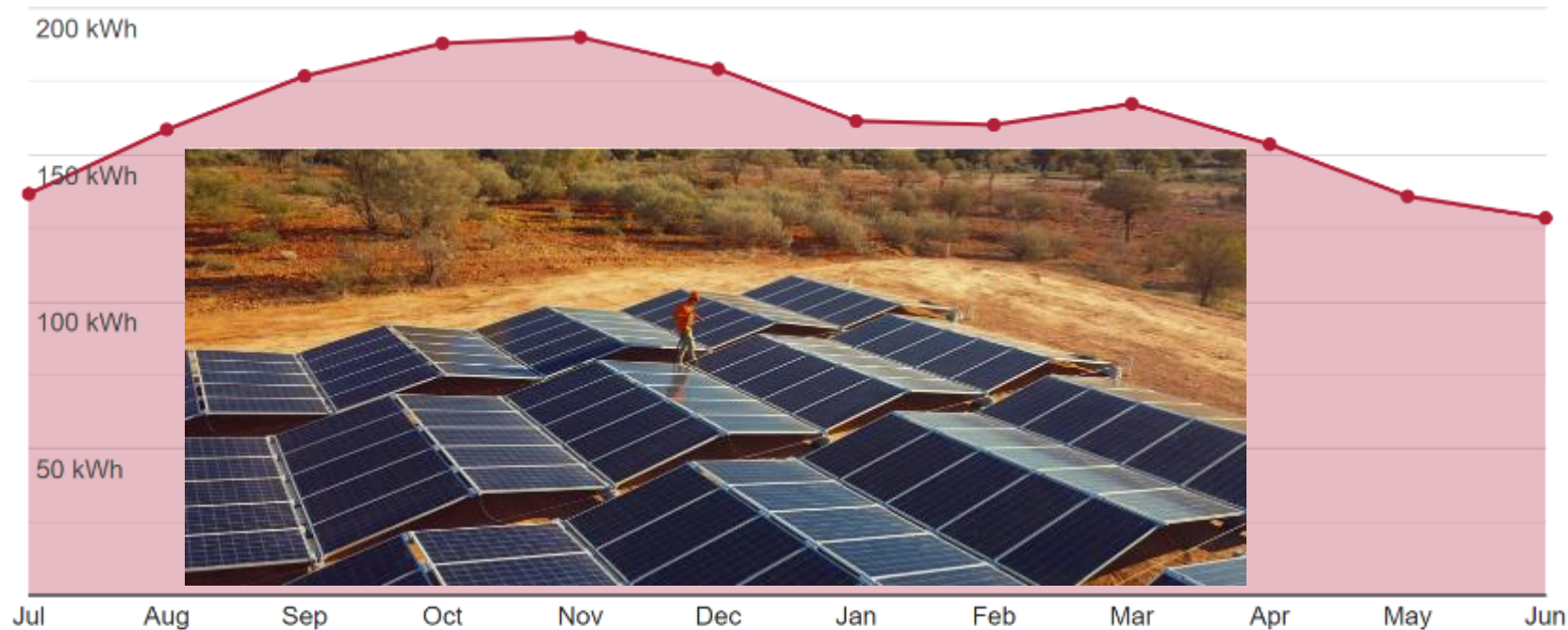
# Aeon's metal portfolio is well placed





# Embracing renewable energy

Lower cost solar PV expected to contribute >30% of total power requirement

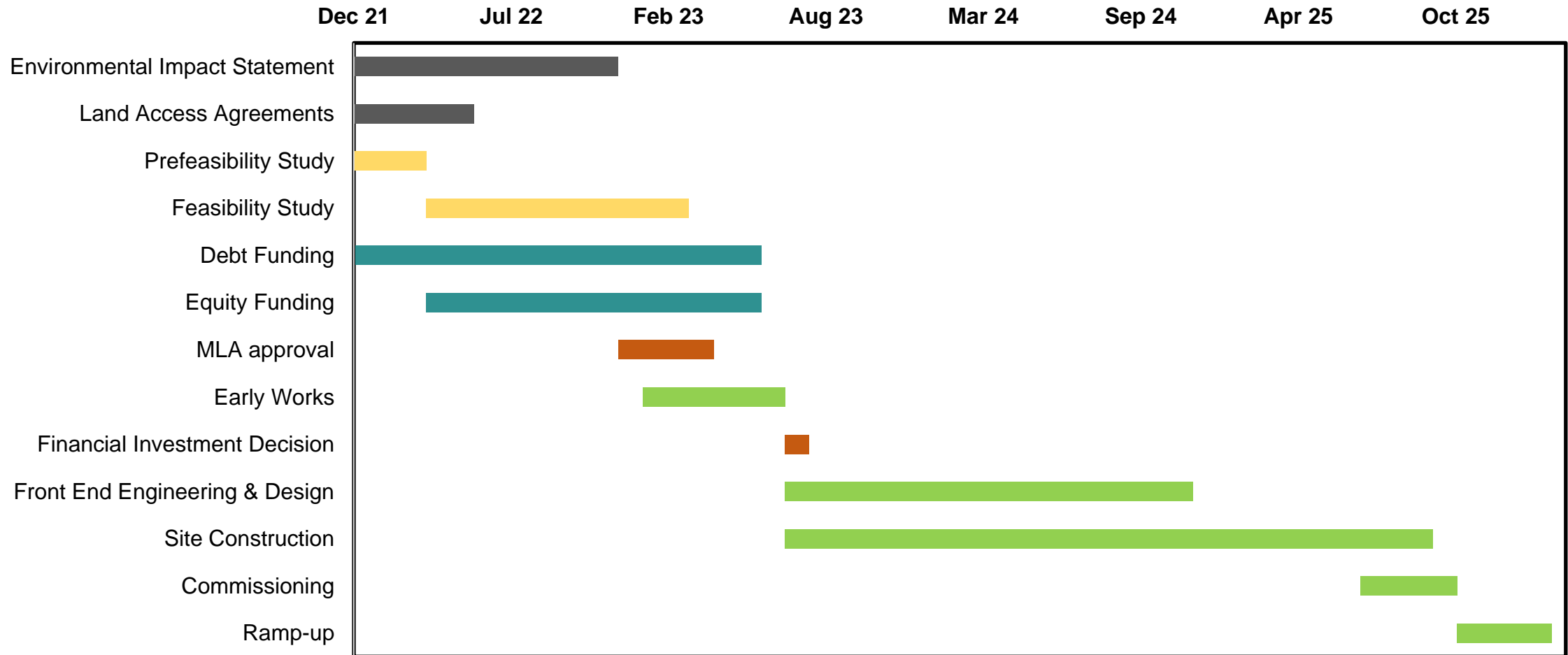


- Annual mean solar irradiation: ~6kWhr/m<sup>2</sup>
- Annual mean sunshine: ~10hr/day
- Total electricity pricing (estimated capex + opex):
  - Solar <10c/kWhr
  - Diesel >25c/kWhr
- Potential for >30% of total project electricity demand (54 MW) to be met by solar



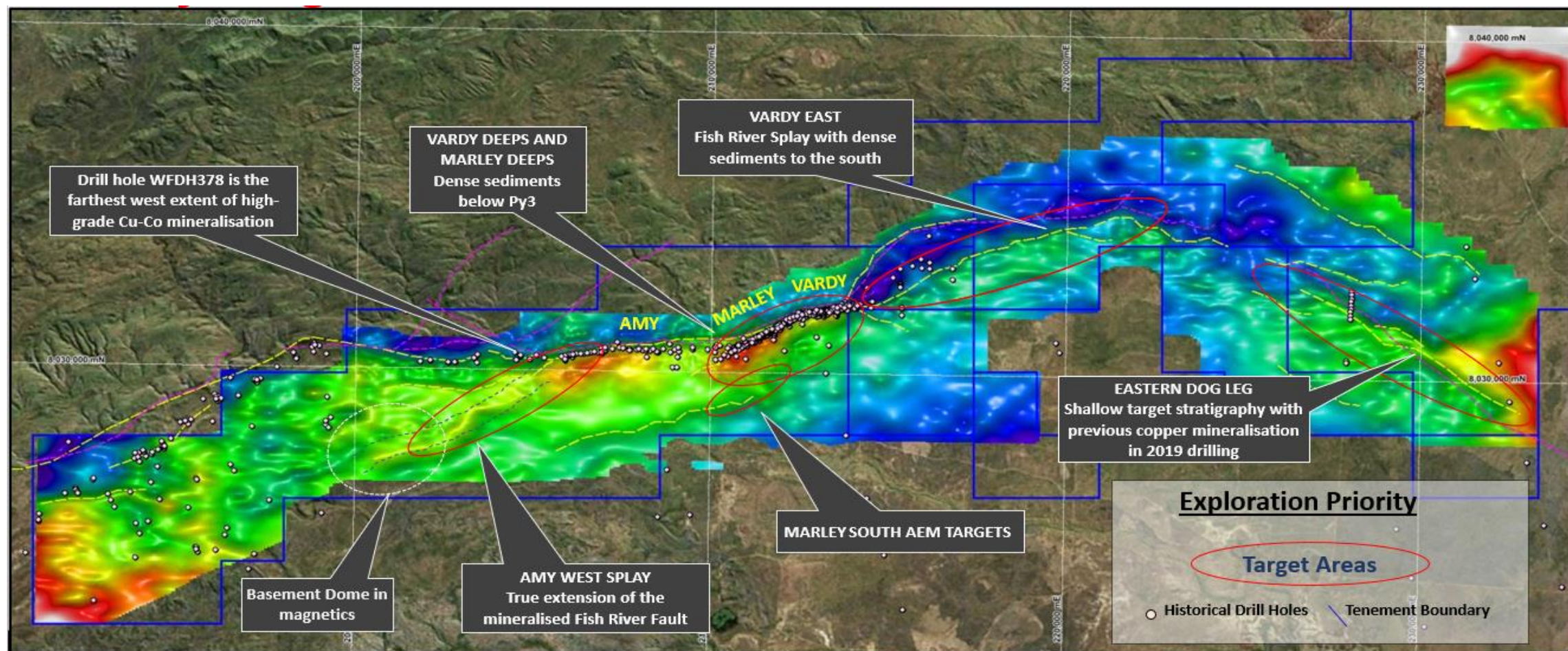
# Proposed project timeline

2023 FID followed by 2 years for construction



# Exciting new Walford Creek drill targets

Recent geophysical surveys highlight potential major extensions to mineral resources

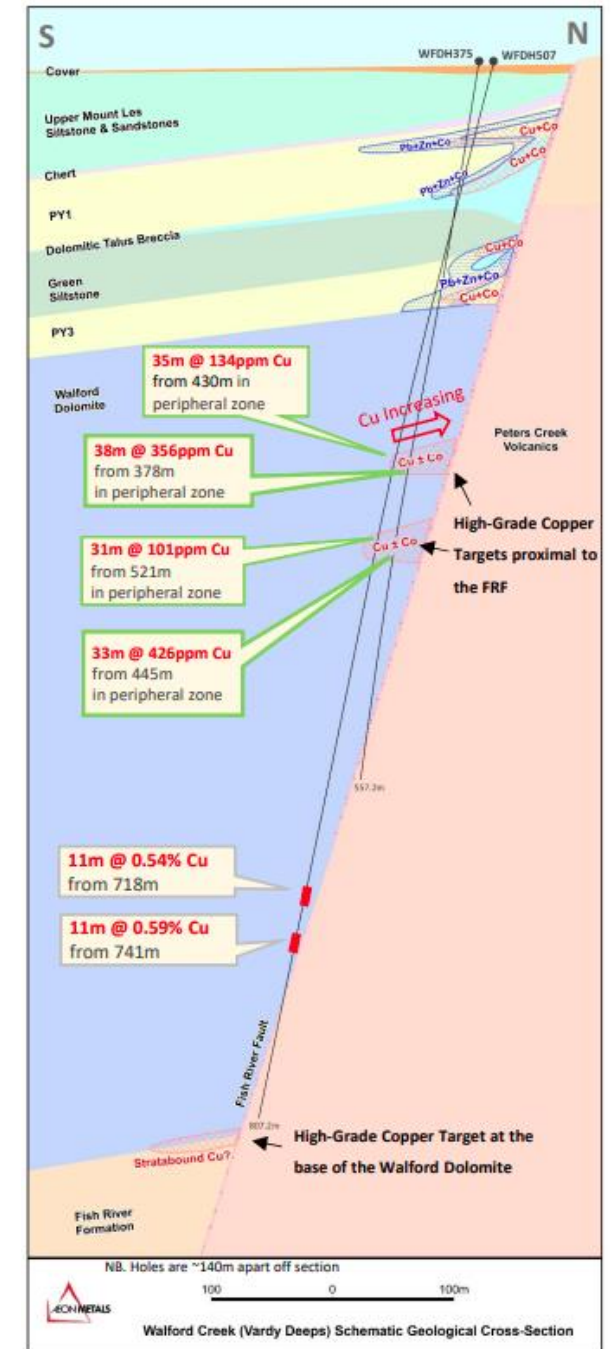
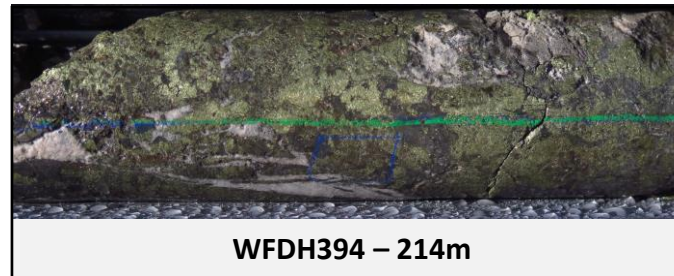




# Vardy Deeps – Key Findings 2021

## Unrecognized prospectivity within the Walford Dolomite

- Vardy Deeps target area
  - defined using high resolution gravity data collected in Q2 2021
  - A dense body is modelled sitting beneath the Vardy mineral resource within the Walford Dolomite. This feature cannot be explained by the currently known stratigraphy in the area.
- Mineralisation previously observed in the top 20 metres of the Walford Dolomite
- Appeared to be hosted in brecciated dolomite and demonstrated clean copper tenor
- Historic Walford Dolomite intersects included:
  - WFDH394, **10m @ 5.03% Cu** from 209m
  - WFPD156, **9.5m @ 2.15% Cu** from 224m
  - WFDD187, 12m @ 0.42% Cu from 218m
  - WFDH400, 3m @ 0.40% Cu from 205m
  - WFDH401, 3m @ 4.91% Cu from 221m
  - WFDH270, 2m @ 4.06% Cu from 225m
  - WFDH390, 3m @ 0.80% Cu from 215m
- 2021 drilling has identified low level copper anomalism now observed over two discrete deeper stratigraphic horizons of 20 and 30m thickness
  - offset from the Fish River Fault
  - exhibit analogous geotechnical signatures to that found higher up within the deposit
- Gravity features remain un-explainable with current observations



# Exciting new Walford Creek drill targets

## Multiple regional high priority targets delineated for further work



### 1. Amy West Splay

- Some of the best copper intersections within the project area are located at the west of the Amy deposit, including drillhole WFDH378 which intersected<sup>1</sup> 19m at 2.2% CuEq from 274m and 17m at 4.84% CuEq from 296 metres which included 9 metres at 5.1% Cu. The new higher resolution geophysics has better delineated a new structural target that is potentially the mineralised continuation of the Fish River Fault to the west.

### 2. Eastern Dog Leg

- The Dog Leg prospect is located around 15km to the East of Walford Creek. The area is under cover masking the geology. The continuation of the Fish River Fault is mapped by the 2021 magnetics<sup>2</sup> to continue beneath this cover. The area has been subjected to limited drilling, including by Aeon with drill hole WFDH483. The hole intersected the favourable PY3 horizon close to surface and a 20m wide zone with sporadic chalcopyrite veining further down the hole<sup>3</sup>. Magnetic and gravity responses with similarities to those observed at Vardy occur along the Fish River Fault.

### 3. Marley South airborne electromagnetic (AEM) targets

- Two discrete AEM targets exist south of the existing deposit trend. These targets form along interpreted parallel structures to the Fish River Fault, which were better defined in the 2021 acquired magnetics data.

### 4. Vardy East Fish River Fault continuation

- This target is where the Fish River Fault continues east from the Vardy deposit. This structural zone was well refined by the 2021 acquired geophysics. Additionally, a magnetic lows and gravity highs adjacent to the FRF are observed, along with a series of correlating airborne electromagnetic anomalies. The lithology is interpreted as Walford Dolomite.

<sup>1</sup> Aeon's ASX release dated 17 October 2018 (High Grade Continues 5.7km West of Resource)

<sup>2</sup> Aeon's ASX release dated 9 August 2021 (New Drill Targets at Walford Creek)

<sup>3</sup> Aeon's ASX release dated 21 November 2019 (Basin Edge Project Update)

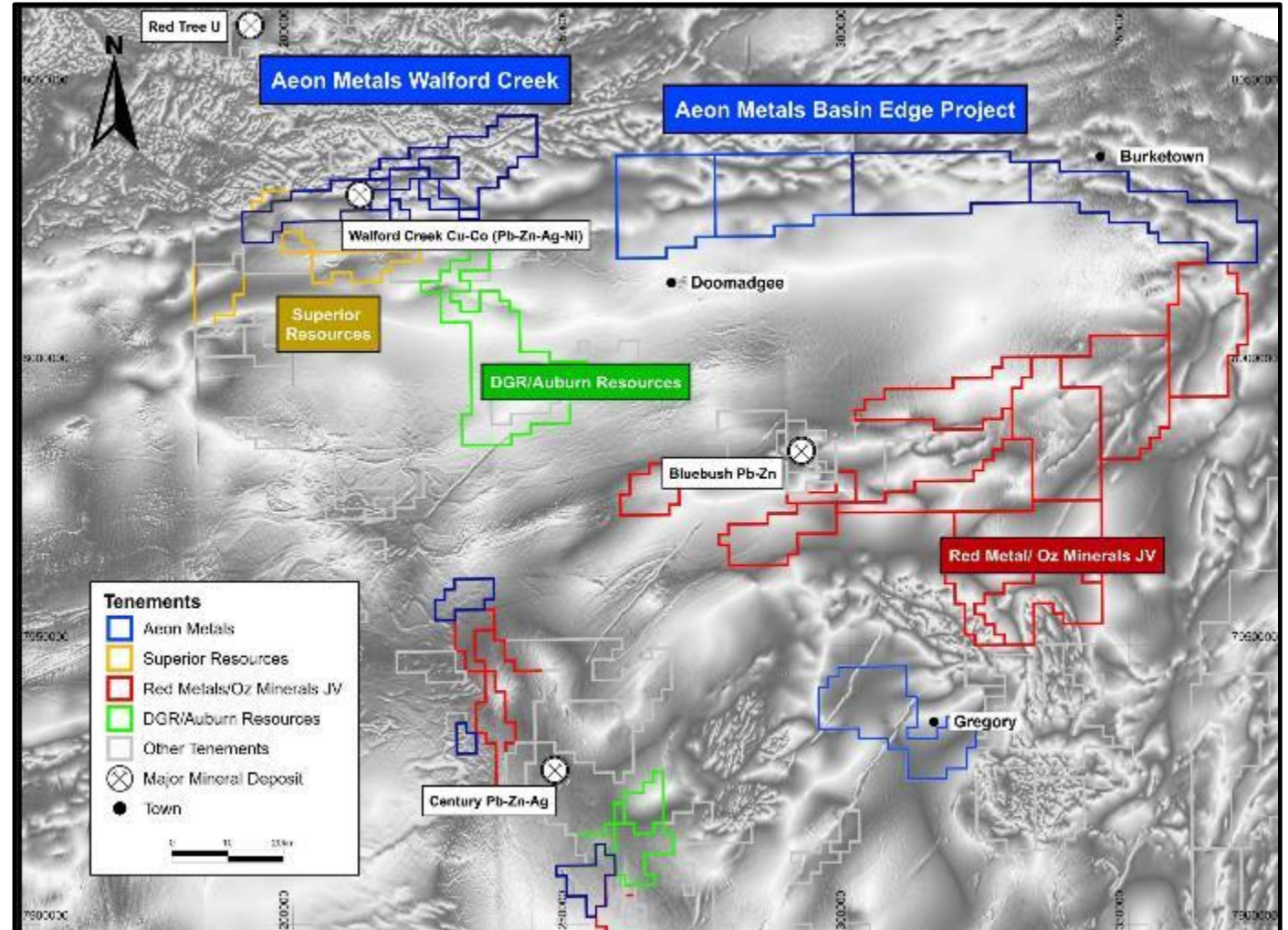


# The wider basin has more to offer

Emerging base metals mineral province that is attracting broader interest

## Basin Edge Project

- Strategic tenement holding in what is a World Class Mineral Province
- Under cover and under explored
- Walford Creek mineralisation strike extent suggests potential for further large systems along basin margin
- Recent research shows the regional prospectivity of area associated with changes in lithospheric thickness
- Bluebush Zn-Pb project identified on south side of basin
- Red Metal has secured southern basin edge and is in JV with OZ Minerals (ASX:OZL)





# Walford Creek exploration potential

Sitting on a “major” new mineral province?

## Ground Position

100% ownership, 416 km<sup>2</sup>, first mover status, plus Basin Edge tenements to east (1,254 km<sup>2</sup>)

## Known Extent

10 km strike from Vardy East to Amy West, 2+ mineralised zones, fault structure controlled

## Right Mineralisation

Cu & Co dominate, same basic ore type everywhere, high resource/plant recoveries

## Excellent Data

High resolution geophysics backed up by extensive drilling database

## Target Rich

Vardy & Marley Deeps, Amy West Splay, Dog Leg, Vardy East, Marley South, and Basin Edge

## Discovery Potential

How many more Walford Creeks?

# Compelling investment rationale

Delivering a portfolio of decarbonising metal exposures in a single project vehicle

1

## TIER 1 JURISDICTION

Responsibly sourced future energy metals from a Tier 1 jurisdiction

2

## MINERAL RESOURCE ESTIMATES

Heavily de-risked Mineral Resource Estimates:  
97% Vardy & Marley in M&I

3

## PRE-FEASIBILITY STUDY

PFS imminent with first production targeted for CY2026

4

## DIVERSIFIED PORTFOLIO

Diversified portfolio of high-value metal products for ethical supply chains

5

## LIFE OF MINE

Initial operating life of 14 years with substantial extension potential under evaluation

6

## DRILL TARGETS

Exciting new hi-res geophysics-driven drill targets at Walford Creek for 2022

7

## SOLAR UTILISATION

Sustainable development targeting a low carbon footprint via solar utilisation

8

## ATTRACTIVE CASH COST

Attractive forecast cash cost curve and AISC:  
US\$2.0 - 2.2/lb CuEq

9

## EXPLORATION

Extensive regional exploration upside and Isa West Tier 1 IOCG targets



# Contact

**Dr Fred Hess**  
Managing Director and CEO  
Aeon Metals Limited

[fred.hess@aeonmetals.com.au](mailto:fred.hess@aeonmetals.com.au)

+61 7 5574 3830