



(ASX:RLF)

# EMPOWERING OUR FARMERS NOURISHING OUR PEOPLE RESTORING OUR EARTH

## COMPANY PRESENTATION

April 2022

### RLF AGTECH

Ken Hancock

Managing Director

[investors@rlfagtech.com.au](mailto:investors@rlfagtech.com.au)

[www.rlfagtech.com.au](http://www.rlfagtech.com.au)

### CONNECT WITH US



# DISCLAIMER

The purpose of this presentation is to provide general information about **RLF AgTech** Limited (**RLF AgTech** or the Company). It is not recommended that any person makes any investment decision in relation to the Company based solely on this presentation.

This presentation does not necessarily contain all information which may be material to the making of a decision in relation to the Company. Any investor should make its own independent assessment and determination as to the Company's prospects prior to making any investment decision, and should not rely on the information in this presentation for that purpose.

This presentation does not involve or imply a recommendation or a statement of opinion in respect of whether to buy, sell or hold securities in the Company. The securities issued by the Company are considered speculative and there is no guarantee that they will make a return on the capital invested, that dividends will be paid on the shares or that there will be an increase in the value of the shares in the future.

This presentation contains certain statements which may constitute "forward-looking statements". Such statements are only predictions and are subject to inherent risks and uncertainties which could cause actual values, results, performance or achievements to differ materially from those expressed, implied or projected in any forward-looking statements. No representation or warranty, express or implied, is made by the Company that the matters stated in this presentation will be achieved or prove to be correct. Recipients of this presentation must make their own investigations and inquiries regarding all assumptions, risks, uncertainties and contingencies which may affect the future operations of the Company or the Company's securities.

The Company does not purport to give financial or investment advice. No account has been taken of the objectives, financial situation or needs of any recipient of this document. Recipients of this document should carefully consider whether the securities issued by the Company are an appropriate investment for them in light of their personal circumstances, including their financial and taxation position.

This presentation is presented for informational purposes only. It is not intended to be, and is not, a prospectus, product disclosure statement, offering memorandum or private placement memorandum for the purpose of Chapter 6D of the Corporations Act 2001. Except for statutory liability which cannot be excluded, the Company, its officers, employees and advisers expressly disclaim any responsibility for the accuracy or completeness of the material contained in this presentation and exclude all liability whatsoever (including in negligence) for any loss or damage which may be suffered by any person as a consequence of any information in this presentation or any error or omission therefrom. The Company accepts no responsibility to update any person regarding any inaccuracy, omission or change in information in this presentation or any other information made available to a person nor any obligation to furnish the person with any further information.



# RLF AGTECH

WE'RE GROWING YOUR FUTURE WITH  
BETTER, HEALTHIER CROP NUTRITION

Our Australian developed and formulated **World First Plant Proton Delivery Technology** aims to solve the world's great agricultural, environmental and human challenges.

**Significant international growth and first mover advantage** in seed and foliar nutrition technologies provide price and margin premiums with substantial growth opportunities in the largest global markets.

Diverse revenues generated from the world's major broadacre and horticultural crops with **demonstrated yield and quality increases.**

Poised to resume pre-covid international expansion and impressive **track record of growth**, leveraging record fertiliser and grain prices.



# OUR UNIQUE TECHNOLOGY

## GENERATING UNIQUE RESULTS

### PLANT PROTON DELIVERY TECHNOLOGY

Australian developed, world first, unique and proprietary.

### QUALIFIED 200% – 1,000%+ ROI

to the farmer.

### 10-30%+ YIELD INCREASE

above traditional fertilisers in independent trials.

### SUSTAINABLE & REGENERATIVE FARMING

for healthier soils.

### GLOBAL CARBON CAPTURE & SEQUESTRATION

For every 100,000 hectares treated = offsets of 150,000 cars<sup>1</sup>.

### 5-YEAR PRE-COVID CAGR OF 60%

between FY2014 – FY2019

1. Calculation based on a 10% yield increase in a 5 tonne grain crop: **RLF** Insight 10/3/2022.

2. Factory operations were shutdown due to COVID in FY2020/FY2021 during which time **RLF**'s revenues remained roughly steady whilst EBITDA increased significantly

3. MarketsandMarkets™ Aug, 2020, Fortune Business Insights™ Feb, 2020 4. Fortune Business Insights™, Feb 2020

## GLOBAL CROP NUTRITION MARKET

**\$257.5 B<sup>3</sup>**

by 2026 global fertiliser  
and nutrition market

**CAGR 8.9%<sup>4</sup>**

micronutrient market to 2026  
with highest margin vertical in sector



**WE SEE OUR TECHNOLOGY AS CRITICAL TO FEEDING  
OUR GROWING POPULATION AND A KEY PIECE IN HELPING  
THE WORLD ACHIEVE NET ZERO IN AGRICULTURE.**

**KEN HANCOCK** - Managing director and CEO



# AUSTRALIAN TECHNOLOGY

## CHANGING THE WAY WE GROW FOOD

### INCREASING FOOD SECURITY

Global food production requires a 70% increase in the next 30 years to feed the world. **RLF**'s products increase yields by up to 30%+ with increased nutrition content to improve the world's food security.

### REDUCING SOIL DEGRADATION

About 33%\* of world soils are moderately to highly degraded. **RLF**'s products build stronger root systems which reverse soil degradation, restoring our soils, and driving higher yields and healthier crops.

### REDUCING TRADITIONAL FERTILISERS

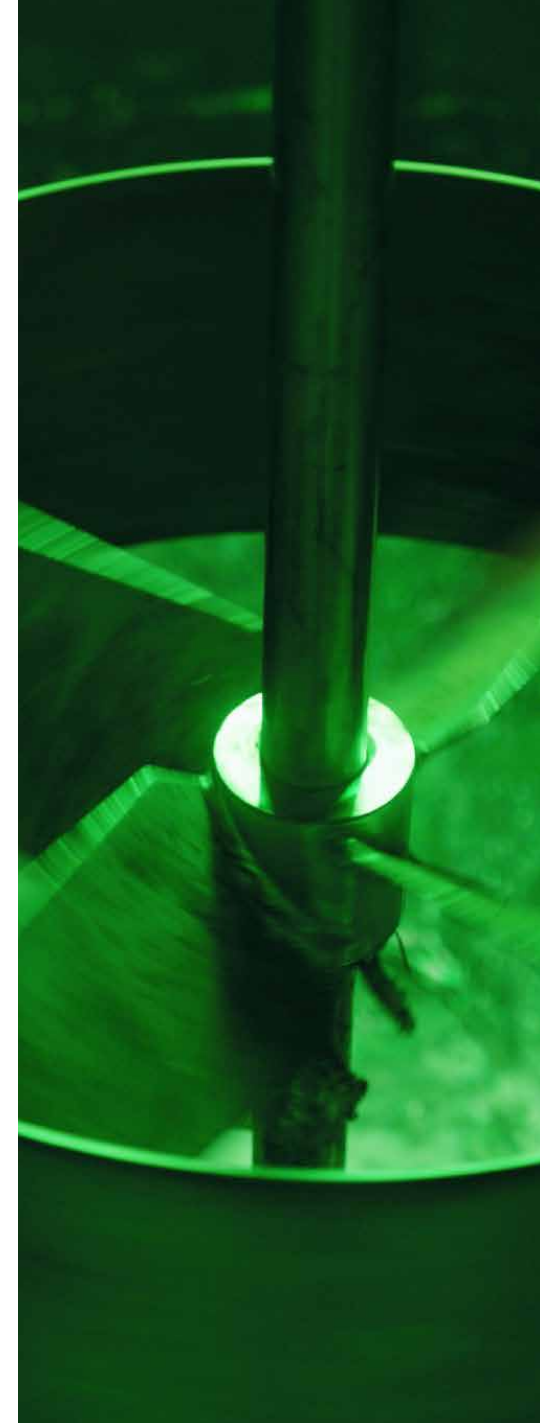
High rates of chemical fertilisers destroys soil biology and health, reducing grower returns and creating environmental issues. We allow farmers to do more with less, and using our products can reduce traditional fertiliser by +20% to benefit soil health, reduce carbon output and increase farm profits.

### LOWERING ENERGY POLLUTION

Manufacturing, transportation and application of traditional fertilisers generates significant emissions. **RLF** Fertilisers are concentrated for transport, produce no waste at manufacturing and can be deployed with existing crop protection applications.

### BETTERING HUMAN HEALTH

Micro nutrients are critical to human health. Poor soils and traditional fertilisers produce less nutrient dense foods. **RLF**'s products improve the biofortification of food we grow and eat leading to increased intake of nutrients, vitamins and minerals.





# RLF AGTECH

## CUSTOMER DISTRIBUTION

Global crop nutrition market:  
**AUD \$257.5B<sup>1</sup>**

**RLF AgTech** opportunity in Asia alone

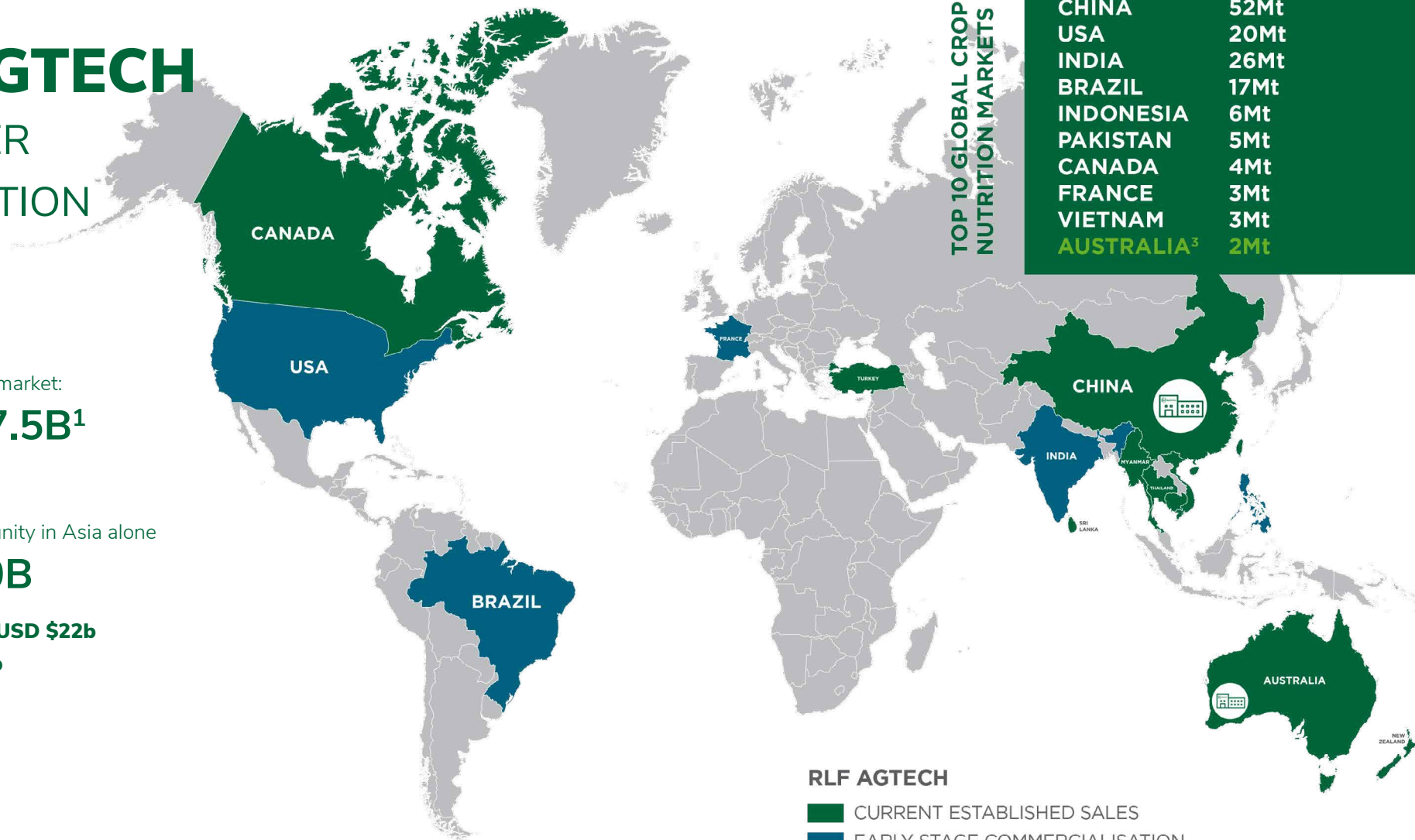
**USD +\$30B**

Seed primer & foliar: **USD \$22b**

Fertigation: **USD \$8b**

TOP 10 GLOBAL CROP  
NUTRITION MARKETS

COUNTRY	CONSUMPTION <sup>2</sup>
CHINA	52Mt
USA	20Mt
INDIA	26Mt
BRAZIL	17Mt
INDONESIA	6Mt
PAKISTAN	5Mt
CANADA	4Mt
FRANCE	3Mt
VIETNAM	3Mt
AUSTRALIA <sup>3</sup>	2Mt



1. China's National Bureau of Statistics & Analysis, The Ministry of Finance, the Ministry of Agriculture and the Ministry of Land and Resources

2. FAO STAT 2017

3. Exclusive manufacturing and distribution license for Australian market — IP royalty paid to **RLF AgTech** under licensed sales agreement

Note: **RLF AgTech** retains global rights to all carbon related initiatives

# CRITICAL INNOVATION IN AGRICULTURE

## RESEARCH AND DEVELOPMENT

### R&D TEAM

In house team of **22 scientists, researchers & agronomists** (3 Doctorates, 4 Masters, 15 Bachelor Degrees) provide product R&D, field evaluations and sales team support.

### PLANT PHYSIOLOGY AND BIO CHEMISTRY

Years of research and development has led to the development of our world leading, unique and proprietary **Plant Proton Delivery Technology** which has been commercialised in **+25 products** for use across major crops.

### TRIALS

**+1,000 field trials** performed to date including independent replicated trials across multiple continents demonstrating product performance and real world benefits in multiple farming systems.

### RESEARCH WHITE PAGES

**400+ white papers & articles** documenting the use and performance of **RLF** products and systems in major crops and across multiple countries.

1 +\$10m invested directly into **RLF** with remainder consisting of gross profits reinvested.

**+\$30M<sup>1</sup>**

invested into **RLF AGTECH**

**+1,000**

field trials

**+25**

products

**+40**

products in development

## 5-YEAR PRODUCT DEVELOPMENT HEAD START

**1-3 yrs**  
formulation  
& lab testing

**1 yrs**  
field research &  
refinement

**1 yrs**  
regulatory  
approval

**Commercial  
Sales**





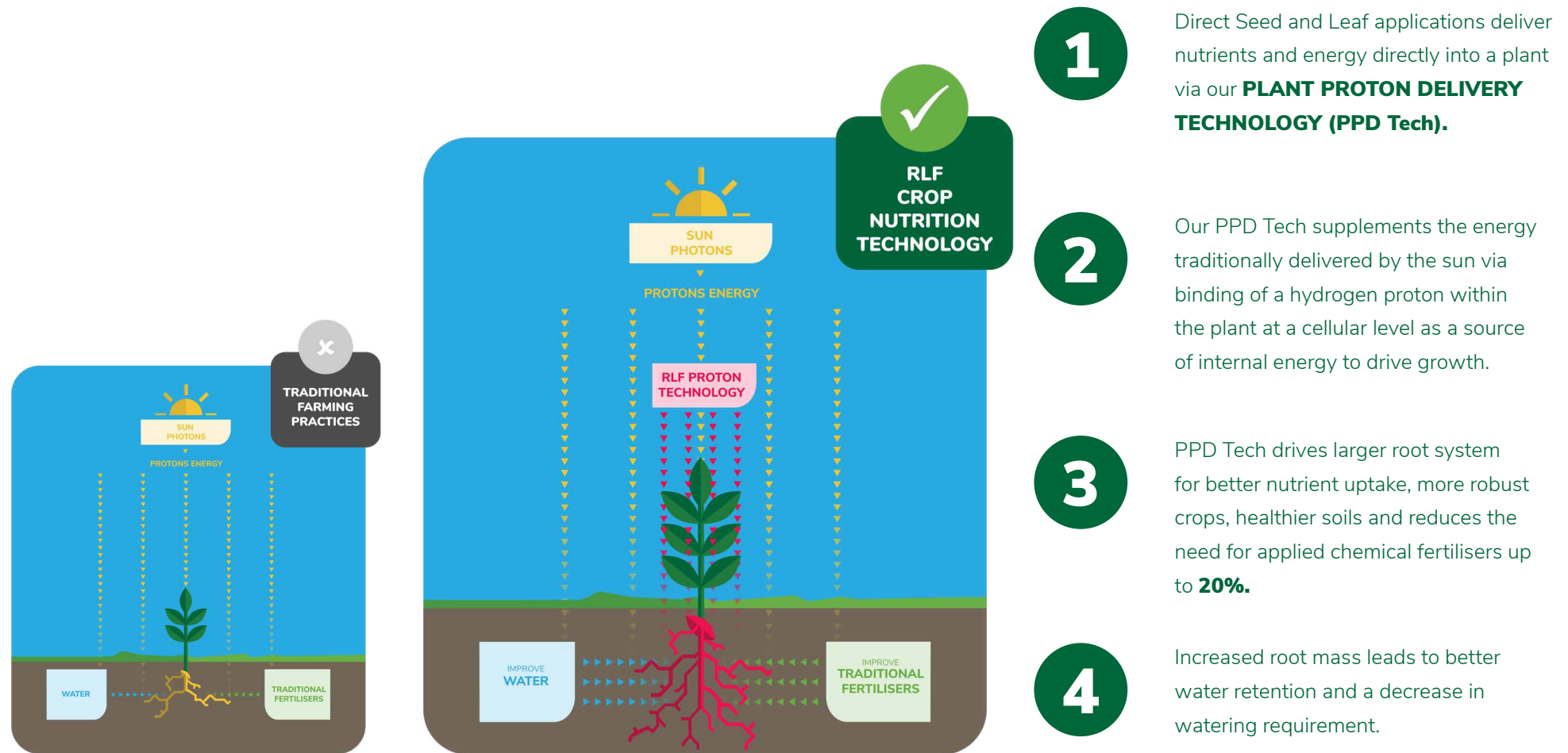
**OUR GROUNDBREAKING TECHNOLOGY HAS BEEN PROVEN IN A  
RANGE OF GLOBAL CONDITIONS AND IS POISED TO REVOLUTIONISE  
EFFICIENCY IN AGRICULTURE.**

**DR CARL URBANI** - Chief Chemist and Head of R&D



# PLANT PROTON DELIVERY TECHNOLOGY

DRIVES GREATER YIELD, HIGHER QUALITY  
& MORE EFFICIENT AGRICULTURE





# EXCEPTIONAL INDEPENDENT

## PRODUCT TRIAL RESULTS

AUSTRALIA	Crop Type	Yield Increase	Farmer ROI
Gilgandra, NSW (S+F)	Wheat	30%	11.0x
Dalwallinu, WA (F)	Wheat	30%	4.5x
Gardiner, WA (F)	Barley	29%	4.8x
Pinery, SA (F)	Wheat	27%	7.8x
Bool Lagoon, SA (F)	Barley	23%	5.7x
Esperance, WA (F)	Canola	23%	10.0x
Allora, QLD (F)	Sorghum	20%	6.2x
Beverly, NSW	Wheat	13%	7.8x

CHINA (Largest Global Market)	Crop Type	Yield Increase	Farmer ROI
Shuzhou Anhui (S)	Wheat	20%	18.9x
Xiangcheng, Henan (S)	Wheat	18%	17.0x
Xiangcheng, Henan (S + F)	Wheat	44%	15.9x
Zhoukou City, Henan (F)	Peanut	10%	15.3x
Kaifeng City, Henan (F)	Peanut	7.7%	14.0x
Wusu, Xinjiang (F+Fr)	Tomato	33%	11.2x
Inner Mongolia (F+Fr)	Sugar Beat	25%	15.7x
Lianyugang City, Jiangsu (F)	Rice	20%	17.9x

AMERICAS	Crop Type	Yield Increase	Farmer ROI
Illinois (S)	Maize	12%	88.6x
Illinois (S)	Maize	13%	89.6x
OTHER REGIONS	Crop Type	Yield Increase	Farmer ROI
Bangladesh (F)	Spinach	20%	18.9x
Bangladesh (F)	Cabbage	18%	17.0x
Bangladesh (F)	Tomato	44%	15.9x
Sri Lanka (F)	Tea	10%	15.3x
Sri Lanka (S)	Rice	7.7%	14.0x
Sri Lanka (S)	Rice	33%	11.2x
Turkey (S)	Barley	25%	15.7x
Turkey (S)	Wheat	20%	17.9x

EXCEPTIONAL RESULTS	Crop Type	Yield Increase	Farmer ROI
Xiangchen, Henan (S+F)	Wheat	54.0%	192.0x
Moree, NSW (F)	Wheat	36.0%	166.7x
Maya, WA (F)	Lupins	51.3%	73.8x
Esperance, WA (F)	Canola	23.0%	160.0x
Tunisia (S)	Wheat	38.0%	274.8x

S - Seed Treatment F - Foliar Fr - Fertilization

# PLANT PROTON DELIVERY TECHNOLOGY BENEFITS

INCREASED YIELDS AND HIGHER QUALITY PRODUCTS





# RLF MARKET SEGMENTS

## THE TECHNOLOGY

## FEEDING THE WORLD

### SEED PRIMER

Our Seed Primers apply our Plant Proton Delivery Technology directly to seeds before planting to give them the nutrients they need for a vigorous start to life.

Number of products	<b>+5</b>
Typical yield increases	<b>5-15%</b>
Typical Farmer ROI	<b>8-10x</b>

### SOIL AND FERTIGATION

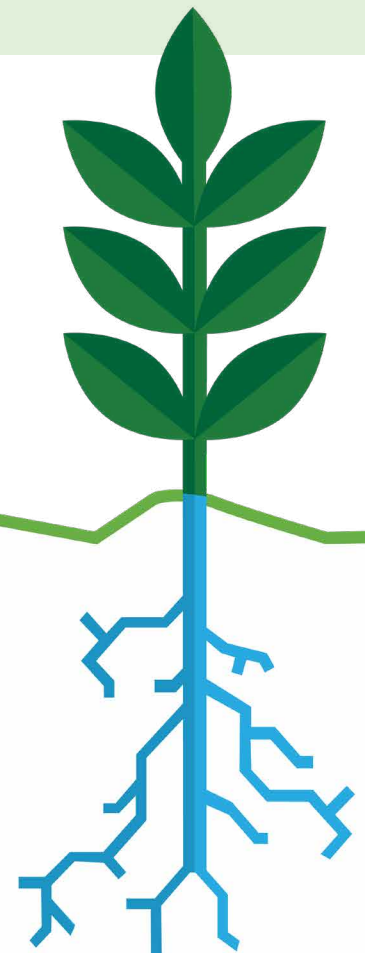
Our Soil & Fertigation products deliver a powerful nutrient package to budding seedlings through irrigation or ground injection.

Number of products	<b>+3</b>
Typical yield increases	<b>5-10%</b>
Typical Farmer ROI	<b>2-4x</b>

### FOLIAR

Our liquid Foliar products are applied directly to a crop's leaves to deliver micronutrients through their natural physiological processes.

Number of products	<b>+18</b>
Typical yield increases	<b>10-30%</b>
Typical Farmer ROI	<b>4-8x</b>



**OUR MISSION IS SIMPLE. BETTER, HEALTHIER CROP NUTRITION, IN A  
MORE SUSTAINABLE & ENVIRONMENTALLY RESPONSIBLE WAY.**

**DR. MIKE LU** - CEO (Asia)





# USING NATURE TO CAPTURE CARBON

Enhanced root system and top growth, **drives carbon capture from the air and storage in the soil** resulting in better soils and cleaner air.


A 10% yield increase on a 5 tonne per hectare grain crop generates an **additional 2.1 tonnes per hectare of CO2 captured.**

**Based on the 2021 European carbon price, the value of 2.1 tonnes of Carbon would be approximately A\$190.**

Application of soil applied chemical fertilisers can generally be reduced by 10-20%, **decreasing the traditional agricultural footprint, whilst positively impacting the environment.**

Our products are highly efficient in nutrient uptake compared to traditional soil applied chemical fertilizers, leading to a **more sustainable and carbon efficient process** across the whole agricultural supply chain.

1. Odyssee-Mure Sectorial Report – Change in Distance Travelled by Car 2000-2018 - RLF Insight 103 2020



OUR WHOLLY OWNED SUBSIDIARY  
**RLF CARBON** HAS EXECUTED A NON-  
BINDING COI WITH THE COMMONWEALTH  
BANK OF AUSTRALIA TO HELP  
COMMERCIALISE THE CARBON POTENTIAL  
OF OUR PRODUCTS.

FOR **EVERY 100,000 HECTARES TREATED**  
WITH **RLF** PRODUCT ACHIEVING ONLY A  
10% YIELD INCREASE, THE ADDITIONAL  
IMPACT IN **EMISSIONS REDUCTIONS**  
**IS EQUIVALENT TO THE ANNUAL CO2**  
**EMISSIONS PRODUCED BY 150,000 CARS<sup>1</sup>.**

# RLF CARBON - NET ZERO AGRICULTURE

MAJOR GLOBAL GREENHOUSE GAS EMISSIONS REDUCTIONS  
WITH SIGNIFICANT NATURAL CARBON CAPTURE AND STORAGE  
SEQUESTRATION

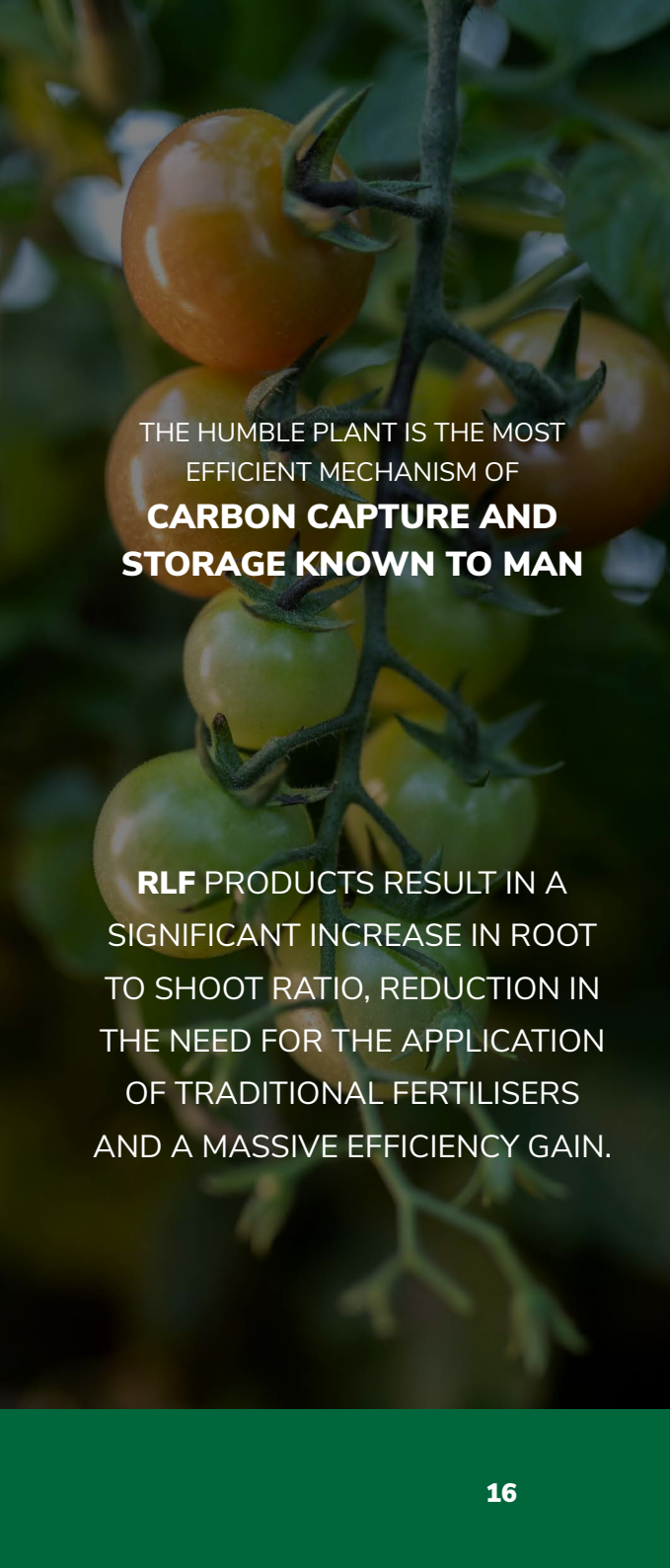
Current global greenhouse gas emissions are approximately 46Gt carbon equivalent per year, or 12,000% greater per year than emissions averaged over 1750 to 1970.

**RLF's** proprietary Integrated Crop Nutrition & Carbon System (ICNCS) reduces greenhouse gas emission by increasing fertiliser uptake efficiency, reducing nitrogen and phosphorous inputs to increase the “root to shoot” ratio and the deposition of organic (carbonaceous) matter in the soil, which is a **natural source of carbon capture and storage**.

Use of ICNCS can result in a 20% reduction in the need for current granular fertilisers with substantial greenhouse gas emissions reductions across the whole agricultural supply chain.

**RLF's** modelling indicates our products add 3 tonne per hectare of carbon organic matter to the soil for every tonne of grain produced as stubble, root mass and rhizodeposits.

- In a soil beginning with 1% organic matter, ICNCS will increase soil organic matter by 0.66% per annum, ultimately taking 4.5 years to increase the SOM from 1% to 2% to depth of 30 cm.
- It therefore takes approximately 5 years to achieve 2% organic matter from 1% to the depth of 30cm in 2t/ha grain crop assuming negligible oxidation of soil organic matter.



THE HUMBLE PLANT IS THE MOST  
EFFICIENT MECHANISM OF  
**CARBON CAPTURE AND  
STORAGE KNOWN TO MAN**

**RLF** PRODUCTS RESULT IN A  
SIGNIFICANT INCREASE IN ROOT  
TO SHOOT RATIO, REDUCTION IN  
THE NEED FOR THE APPLICATION  
OF TRADITIONAL FERTILISERS  
AND A MASSIVE EFFICIENCY GAIN.



# BENEFITS TO FARMERS

## EXCEPTIONAL NET RETURNS GENERATED THROUGH USE OF ICNCS

ICNCS provides an opportunity for farmers to obtain benefits via the increase in yields and quality of farmed produce, in a way which has a substantial impact on greenhouse gas emissions across the agricultural supply chain, as well as creating direct soil carbon.

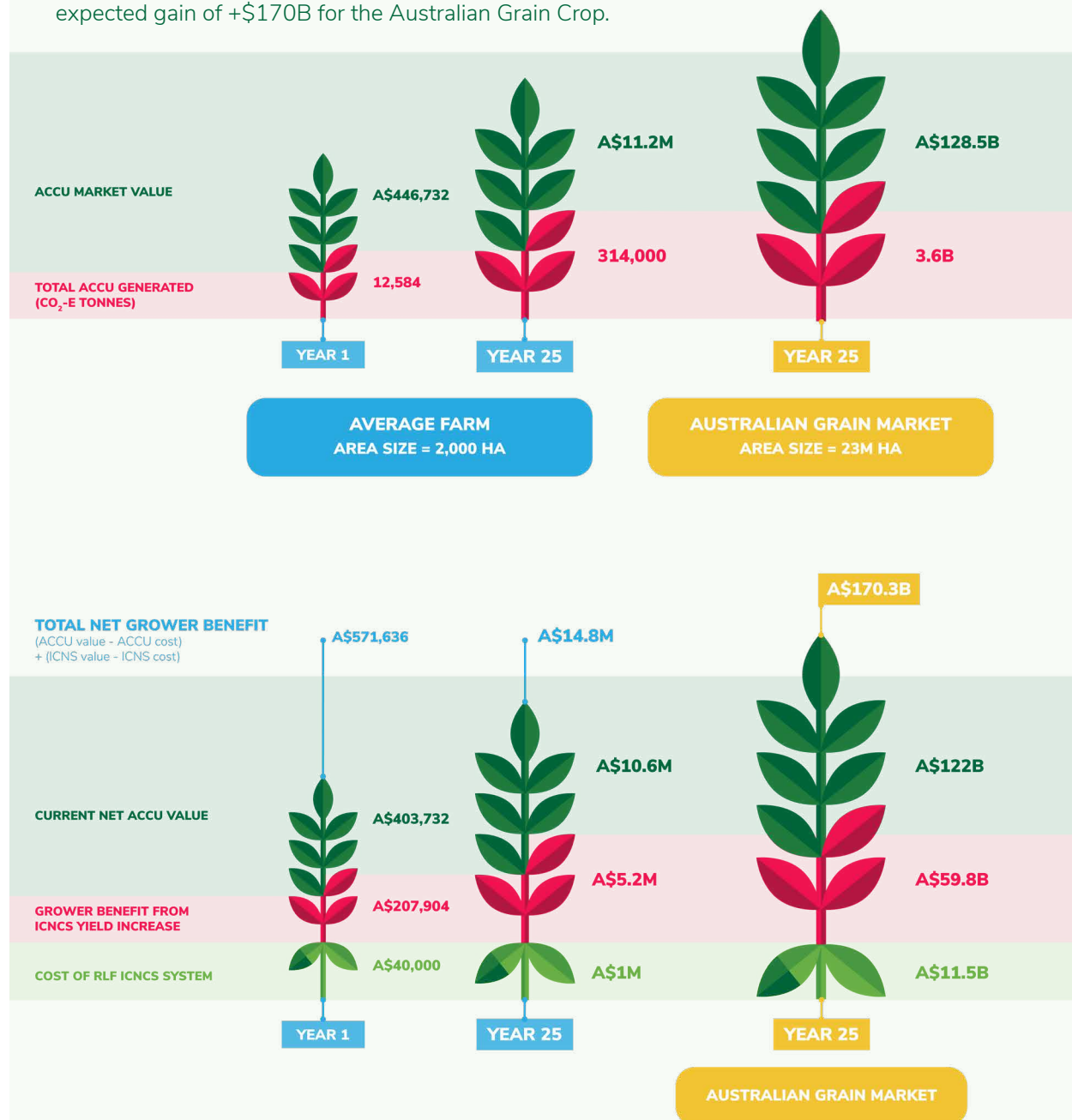
ICNCS is net positive before considering reduction in fertiliser or increased ACCU generation:

**At the Australian carbon price of \$35.50, ACCU value estimated to be \$5.2 billion per annum or \$128.4 billion over the 25 year life of the project.**

Additional farmer revenue, related solely to yield, estimated to be \$2.4 billion per annum and \$59.8 billion over the 25 year life of the project.

**Total net grower benefit, estimated to be \$6.6 billion per annum and \$170.3 billion over the 25 year life of the project.**

Internal RLF Study and Modelling on potential carbon opportunity indicates potential net expected gain of +\$170B for the Australian Grain Crop.



**WE CAN NOW MAKE A GENUINE DIFFERENCE TO GLOBAL FOOD SECURITY, SOIL HEALTH AND PLAY A CRITICAL ROLE IN CARBON SEQUESTRATION IN THE MARCH TOWARD NET ZERO.**

**ALL THIS, THROUGH INTEGRATION WITH EXISTING FARMING PRACTICES.**

**GAVIN BALL** - Executive Director





# OUR PEOPLE BOARD MEMBERS



## DON MCLAY

### Chairman

Don is known for his strategic vision, integrity, determination and sound business management. His experience is global, with particular emphasis on Australia, New Zealand and Asia. A key strength is his ability to develop new business platforms, lead Boards and business teams in new directions and optimise market opportunities. Don was Chairman of Credit Corp (ASX:CCP), during which time he presided over a market capitalisation increase from \$30 million to in excess of \$2 billion. He was Chairman and a founding member of the Sydney Branch of the Institute of Chartered Accountants of New Zealand (now Chartered Accountants Australia & New Zealand) and holds a Bachelor of Commerce degree from Otago University NZ.



## GAVIN BALL

### Executive Director

Gavin has over 30 years of expertise in the start-up, development, growth and ongoing management of business. He has operated a diverse range of businesses aligned with real estate, telecommunications, retail, media, technology, mining and agriculture. Working in numerous executive roles, Gavin has a management, financial and accounting skill set with a sales, marketing and commercialisation focus. In his role as Executive Director, he manages the international sales and marketing operations.



## LIZA CARPENNE

### Non-Executive Director

Liza's executive experience encompasses corporate governance, social responsibility, stakeholder engagement, statutory reporting, human resources and day to day operational management, with an emphasis on leading companies through periods of growth and transformational change. She is a qualified Chartered Secretary with ASX100 experience, a Fellow of the Governance Institute of Australia, a graduate of the Australian Institute of Company Directors and holds a Master of Business Administration. Liza is currently a Non-Executive Director of ASX-listed Mincor Resources NL and Alchemy Resources LTD.



## KEN HANCOCK

### Managing Director and Chief Executive Officer (Global)

With over 20 years operational experience in mid-sized manufacturing and distribution businesses, Ken has been responsible for the development of the Company's core business assets, including establishing its initial operations in China, the world's largest plant nutrition market. He was responsible also for the development of strategic supply alliances that offered a comprehensive range of plant nutrition products from **RLF** Australia into the New Zealand market. Ken oversaw the establishment of a new corporate structure that has enabled the expansion of global operations for the Company.



## DR. MIKE LU PH.D.

### Chief Executive Officer (Asia)

Mike is responsible for the Company's Asia Region operations and has significant management experience in Chinese plant nutrition markets. He holds a PhD in Soil Science and Plant Nutrition. Mike has considerable senior level industry experience, including with Cargill Fertilizer Inc. (USA) and its Cargill Tianjin China (US-Sino Joint Venture) operations. He is fluent in Mandarin and English, and brings an understanding of Chinese culture, business practices and government compliance requirements to the Company.



## PAUL MCKENZIE

### Non-Executive Director

Paul is the Managing Partner of Agrarian Management Consultants to Agriculture, a leading Western Australian agriculture consultancy with offices in Geraldton, Perth and Katanning. He has 20 years' experience in agribusiness, management, finance and primary production, and is currently Chair of Kangaroo Island Plantation Timbers having been on the Board since 2005. His qualifications and professional memberships include BSc(Agric), BCom, FAICD and AIAST. He is a past President of the Australian Association of Agricultural Consultants (WA) Inc and a Ministerial Appointee to various agribusiness review and advisory panels. Paul was the founding Chairman of the Gage Roads Brewing Co from concept, to private company, to ASX listing in December 2006.

# OUR PEOPLE MANAGEMENT



## **DR. HOOSHANG NASSERY B.SC. M.SC PH.D.**

### Chief Scientist and Head of Plant Physiology

Hooshang coordinates the Company's research and trials, product development, technical studies, and strategy. He has an extensive international academic and research record, and has held positions as Professor of Biology within the university education sector, held senior research roles in both government and private enterprises, and is credited with a number of significant findings in the field of plant nutrition.



## **DR. CARL URBANI BSC. (HONS), PH.D.**

### Chief Chemist and Head of R&D

Carl has extensive experience in inorganic, organic, and polymer chemistry. He is responsible for new product development, including laboratory-based and pilot scale testing, and the manufacturing scale-up operations required for delivery to market. Carl brings considerable academic expertise and knowledge to this role and is recognised with patents, publications and other accredited scientific papers.



## **GRANT BORGWARD**

### Manager, Commercial & Corporate

With 20+ years at **RLF**, Grant is directly responsible for on the ground sales and support. He ensures our technical agronomic solutions have practical applications for our large regional channel partners in western markets, and assists our Commercial & Corporate Farming sales team in Asia.



## **DR. KIM LAI DBA, MBUS, BSC.**

### Director of Marketing Asia

Dr. Lai is an experienced marketing executive, having worked for some of Asia's biggest biotech and crop nutrition Companies, including SDS Biotech Co Ltd (JPX: 4952.T), Pilarquim (Shanghai) Co., Ltd, and BASF Shanghai.



## **SU-MEI SAIN**

### Chief Financial Officer

Su-Mei has been a finance professional in various industries for over 15 years such as mining, biotech and retail. She has held various finance positions at ASX companies such as Emyria Limited, S2 Resources, Sirius Resources, Essential Metals and Consolidated Minerals. She is currently Finance Director of Todd River Resources and is a member of the Certified Practising Accountants Australia and Australian Institute of Company Directors.



## **BENJAMIN DONOVAN**

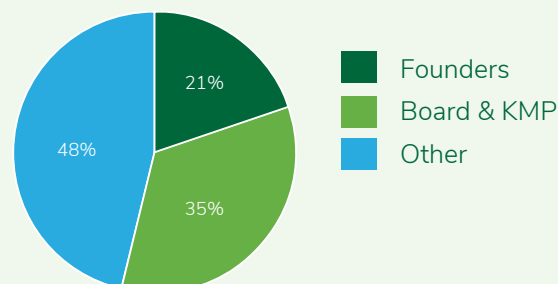
### Company Secretary

Ben is a member of the Governance Institute of Australia and provides corporate advisory, IPO and consultancy services to a number of companies. He is currently Company Secretary for several ASX listed and public unlisted companies, with his experiences ranging across the resources, agritech, biotech, media and technology industries. Ben has extensive experience in listing rules compliance and corporate governance, and in addition in capital markets by raising capital and assisting companies achieve an initial listing on the ASX.



# KEY COMPANY INFORMATION

## SHAREHOLDER BREAKDOWN AT IPO<sup>1</sup>



## BEST H1 REVENUE RESULT TO DATE

H1 FY2022: \$3.1M (44% increase from H1 FY2021)

H1 FY2021: \$2.1M

## HISTORICAL REVENUE

FY2014: ~A\$1 million

FY2020: ~A\$10 million (audited)

## FY2021 Results (pro-forma)

Revenue: ~A\$8.5 million

EBITDA: ~A\$1.8 million (89% increase from FY2020 EBITDA)

Gross Profit Margin: 68%

## CAPITAL STRUCTURE & OFFER DETAILS

Price per Share under the Public Offer	\$0.20
--	--------

Existing Shares on issue	120,049,523
--------------------------	-------------

Shares Issued under the Convertible Note Share Offer	22,373,755
---	------------

Shares Issued under the Public Offer	42,510,000
--------------------------------------	------------

<b>Total Shares on Issue</b>	<b>184,933,278</b>
------------------------------	--------------------

Amount raised by the Public Offer (excluding costs of the Offer)	\$8,502,000
---	-------------

Pro-forma cash	\$10,407,118
----------------	--------------

<b>Indicative market capitalisation</b>	<b>\$36,986,656</b>
---	---------------------

3-year Options (ex. \$0.30)	7,500,000
-----------------------------	-----------

5-year Options (ex. \$0.54)	18,694,444
-----------------------------	------------

1. Excludes milestone performance deferred consideration shares of:

- 12,187,500 shares vesting upon achieving annual revenue of A\$25 million or EBITDA of A\$5 million
- 12,187,500 shares vesting upon achieving annual revenue of A\$50 million or EBITDA of A\$10 million

2. The Company's non-current liabilities include related deferred trade creditors totalling c.\$3.5m on a zero per cent interest basis not payable until March 2024 and then on a monthly basis via 24 equal monthly instalments

# EXPANSION CAPITAL

## TO DRIVE GROWTH

### HUMAN CAPITAL

Investing in field sales and technical personnel to expand distribution and drive **RLF**'s position to be the number one brand in seed primer and multi-spectrum foliar nutrition

### MANUFACTURING

Increase manufacturing and packing capacity in Asia to meet growing domestic and export demand

### R&D INVESTMENT

Growing our team of R&D Scientists & technical experts to develop new proprietary technology and facilitate ongoing field research

### BRANDING & DISTRIBUTION

An ambition to grow the most valuable specialist crop nutrition distribution channel, whilst building the most recognisable liquid crop nutrition brand in the sector



## OFFER CLOSED

SUCCESSFULLY RAISED \$8.5M AT  
\$0.20 PER SHARE

## LISTING ON THE ASX

APRIL 2022





(ASX:RLF)

# APPENDICES



# AWARD WINNING AGSCIENCE

EXCELLENCE IN PRODUCT  
DEVELOPMENT

## PRODUCT AWARDS

Aofei/Fly Plus Top 100 Star Product

Aofei/Fly plus Top 10 Star Product

Ultra Foliar Top 10 Super Star product (Rice)

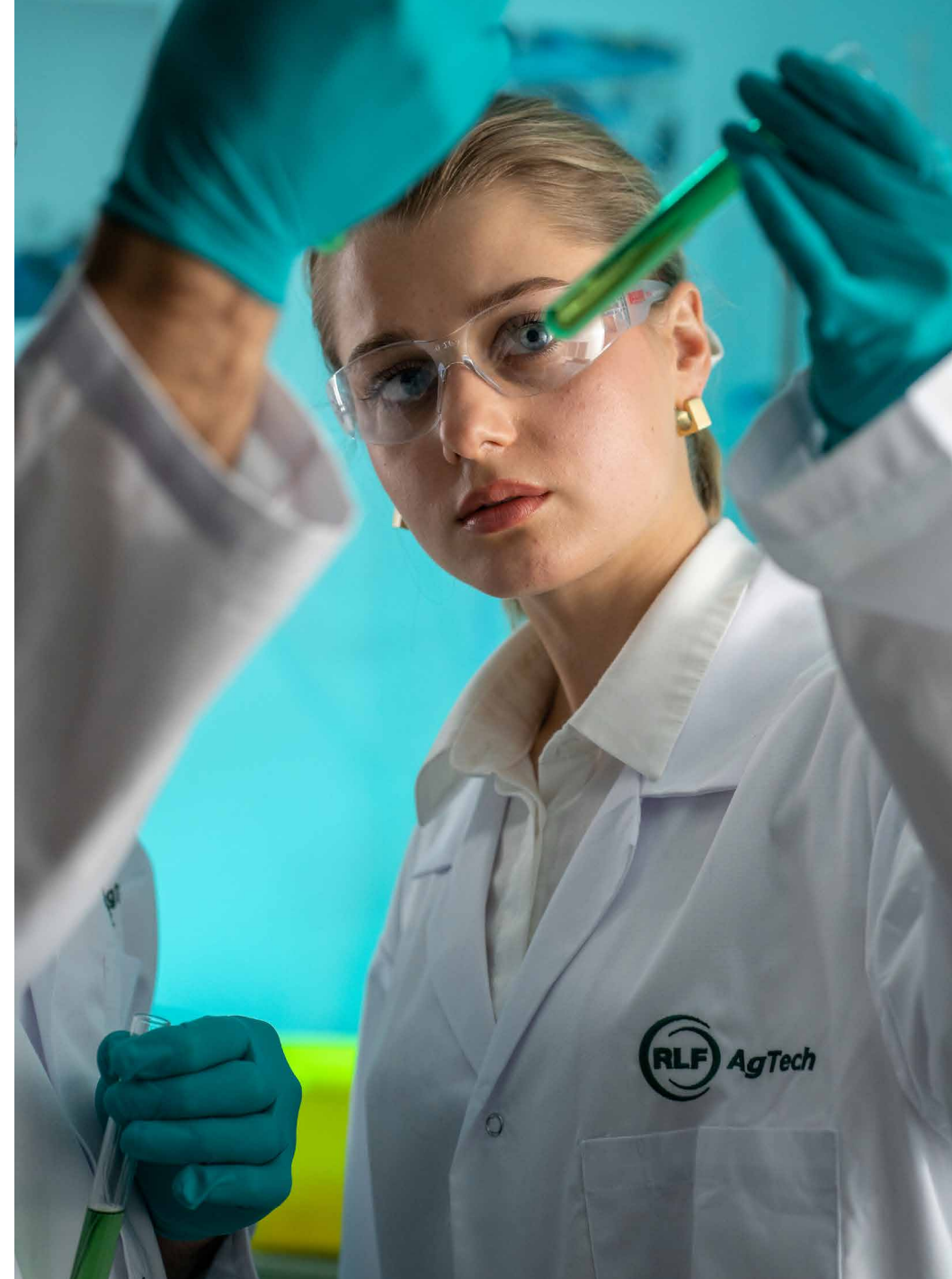
Ultra Foliar 12 Top Fertiliser brand

## COMPANY AWARDS

Leader in Specialty Crop Nutrition

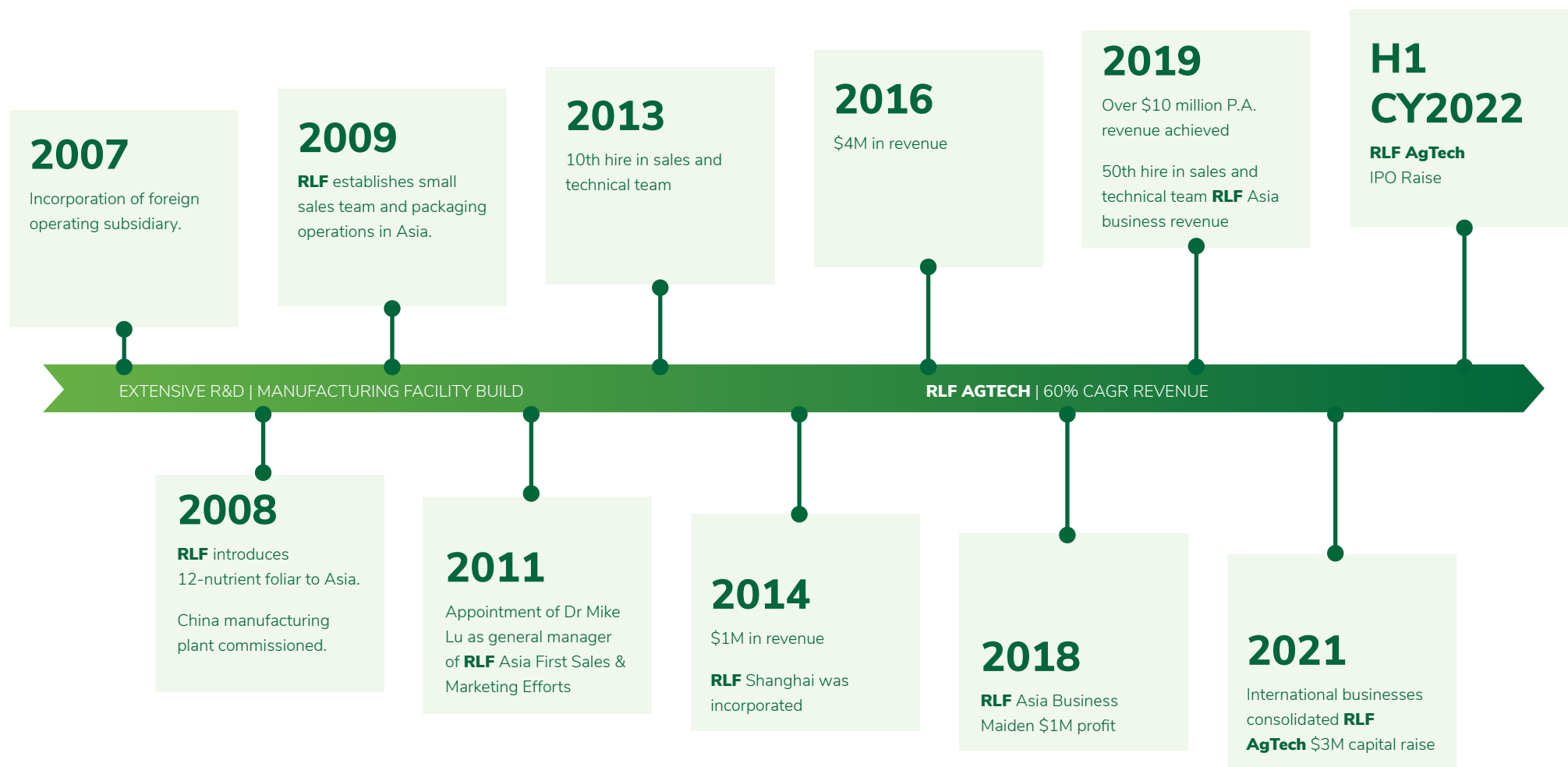
Excellent Brand in China Special Fertilisers Line

China Special Fertiliser Development Contribution Award



# HISTORY OF RLF AGTECH

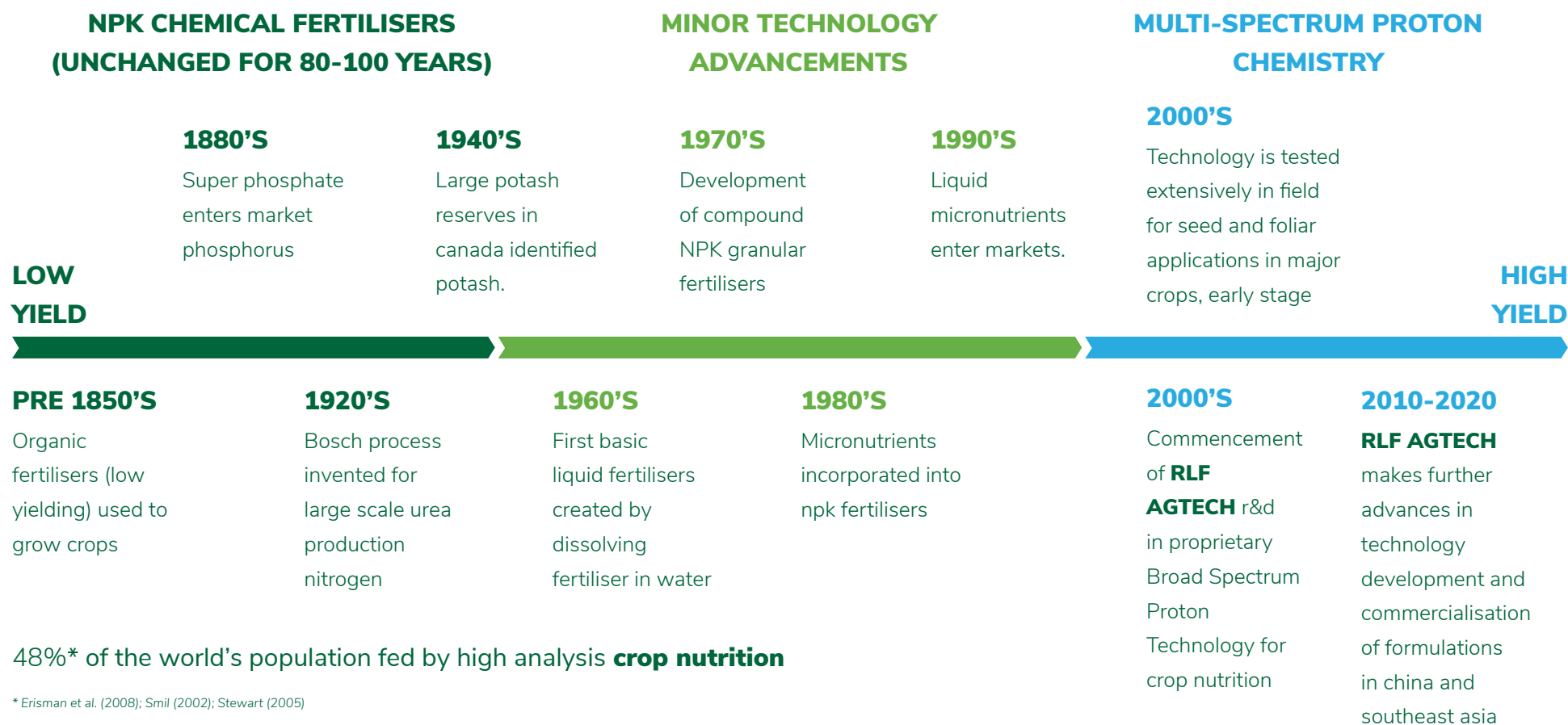
## BUILDING A WORLD-CLASS CROP NUTRITION BUSINESS



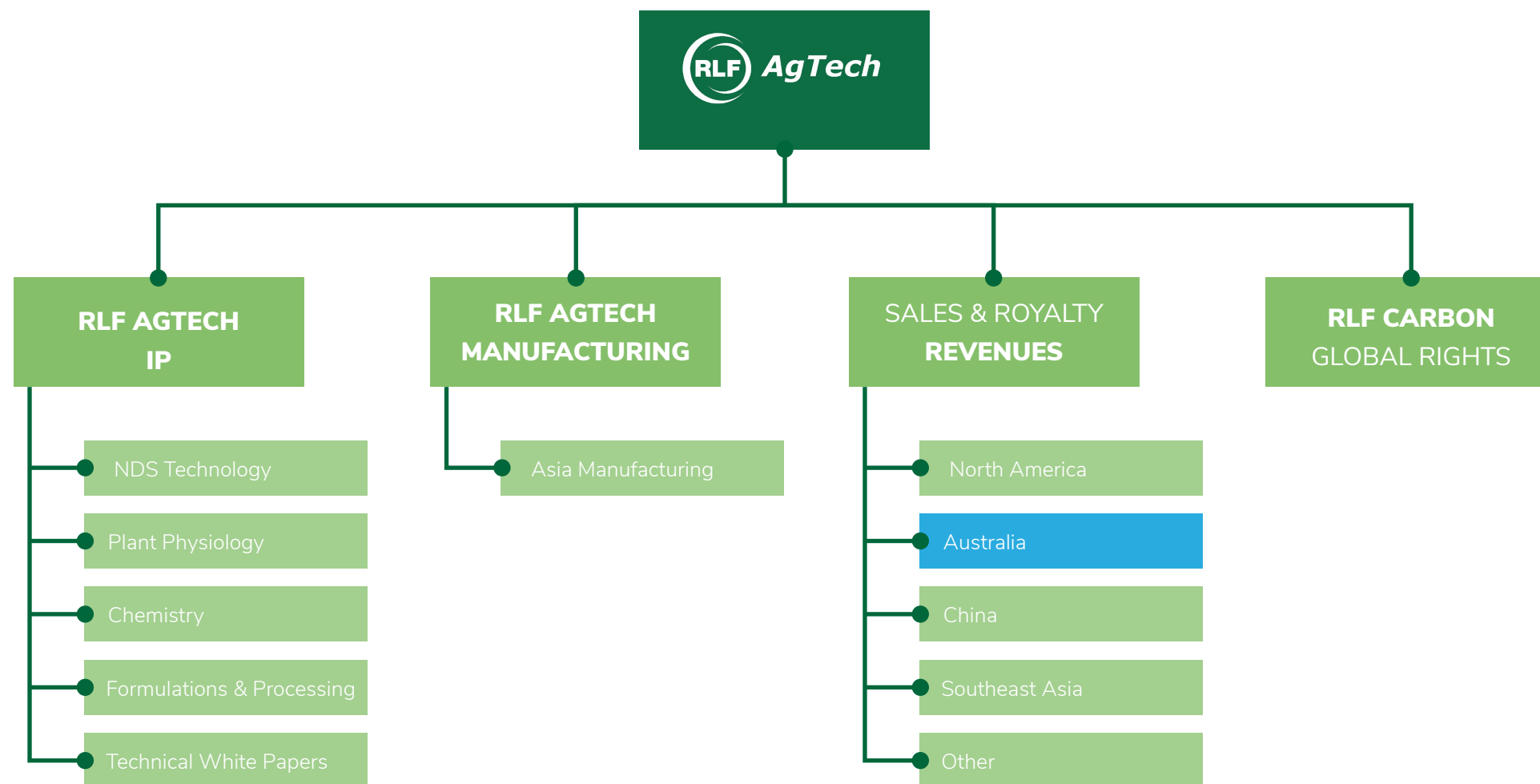


# EVOLUTION OF HIGH ANALYSIS CROP NUTRITION

DEVELOPING TECHNOLOGY TO FEED THE WORLD'S POPULATION



# COMPANY STRUCTURE



RLF AgTech sells products through a licensed manufacturing and distribution arrangement in Australia for which a royalty of 3.85% on net sales of RLF technology will be paid

# RLF AGTECH INTELLECTUAL PROPERTY

## PLANT PHYSIOLOGY

Our technology works at a cellular level in synergy with the plant resulting in maximum field performance.

## PROPRIETARY PROTON CHEMISTRY

Our World First and Unique Technology directly invigorates the plant's energy systems and metabolism whilst supercharging efficient nutrient supply into the plants cells.

## NUTRIENT DELIVERY SYSTEM™ TECHNOLOGY

Trade secrets refined by our expert scientists over two decades are the catalyst to delivering our industry leading product performance and ROI's.

## INTEGRATED FERTILISER MANAGEMENT SYSTEM

Our proprietary system aims to reduce chemical fertiliser applications, increases yields and increases CO2 sequestration and regenerative farming outcomes.

## MANUFACTURING EXPERTISE

Quality Assured, scalable technical manufacturing know how combined with automated zero waste production processes.

## BRAND / LICENSES

Trusted Brand, trademarks and country specific product licences.



SEED PRIMER



ULTRA FOLIAR





(ASX:RLF)

**WWW.RLF.COM.AU**

**KEN HANCOCK** - CEO  
investors@rlfagtech.com.au

This presentation has been approved  
for release by the managing director.