

Grade is King

- Rob Bills – Managing Director and Chief Executive Officer



emmerson
resources

Important notice and disclaimer

This presentation has been prepared by Emmerson Resources Limited ACN 117 086 745 (ASX: **ERM**) (the “**Company**”) and is being provided to a limited number of investors for the sole purpose of providing preliminary background information to enable recipients to review the business activities of the Company. It is not intended as an offer, invitation, solicitation or recommendation with respect to the purchase or sale of any securities.

This presentation should not be relied upon as a representation of any matter that a potential investor should consider in evaluating the Company. The Company, nor any of its directors, agents, officers, employees or affiliates does not make any representation or warranty, express or implied, as to or endorsement of, the accuracy or completeness of any information, statements, representations or forecasts contained in this presentation, and they do not accept any liability for any statement made in, or omitted from, this presentation.

Prospective investors should make their own independent evaluation of an investment in the Company.

Nothing in this presentation should be construed as a financial product advice, whether personal or general, for the purposes of Section 766B of the Corporations Act. This presentation consists purely of factual information and does not involve or imply a recommendation or a statement of opinion in respect of whether to buy, sell or hold a financial product. The Company has not considered any of your objectives, financial situation or needs.

This presentation and contents has been made available in confidence and may not be reproduced or disclosed to third parties or made public in any way without the express written permission of the Company.

Investment Highlights



Commanding land positions in NT and NSW

Tennant Creek (NT) is one of Australia's highest grade gold provinces

Macquarie Arc (NSW) – home of the giant copper-gold deposits



Pathway to grow and realise value from Tennant Creek

New Strategic Alliance with TCMG over the NPA and SPA

Secures \$10.5m Exploration Earn-in and JV (incl. mining JV)

Emmerson retains 100% of Hermitage, Jasper Hills and Edna Beryl



Creating an emerging gold royalty business

TCMG – well credentialled partner that is funding mining and the new centralised mill in Tennant Creek

Emmerson to receive a low risk 6% gold royalty from each mine



Track record of discoveries from systematic science-based exploration

Hermitage (116m at 3.4% copper and 0.88g/t gold, ending in 2m at 20g/t gold and 3.9% copper)

Mauretania (20m at 38.5g/t gold, incl. 4m at 158g/t gold)

Edna Beryl (8m at 157g/t gold incl. 2m at 613g/t gold)

All discovered by ERM in the last 5 years



Highly credentialed and committed Board and Management Team

Majority have been with Emmerson since 2007



Planning an aggressive program in Tennant Creek and NSW

- **Hermitage** (NT) - Phase 2 drill program just completed
- **Kiola** (NSW) – phase 2 drill program in late 2022
- **Jasper Hills** (NT) – phase 1 drill program (subject to land access)
- ERM awarded 3 out of 3 co-funding collaboration grants by NT Govt - drone mags starting
- Drilling (brownfields and greenfields) in JV areas (NT)

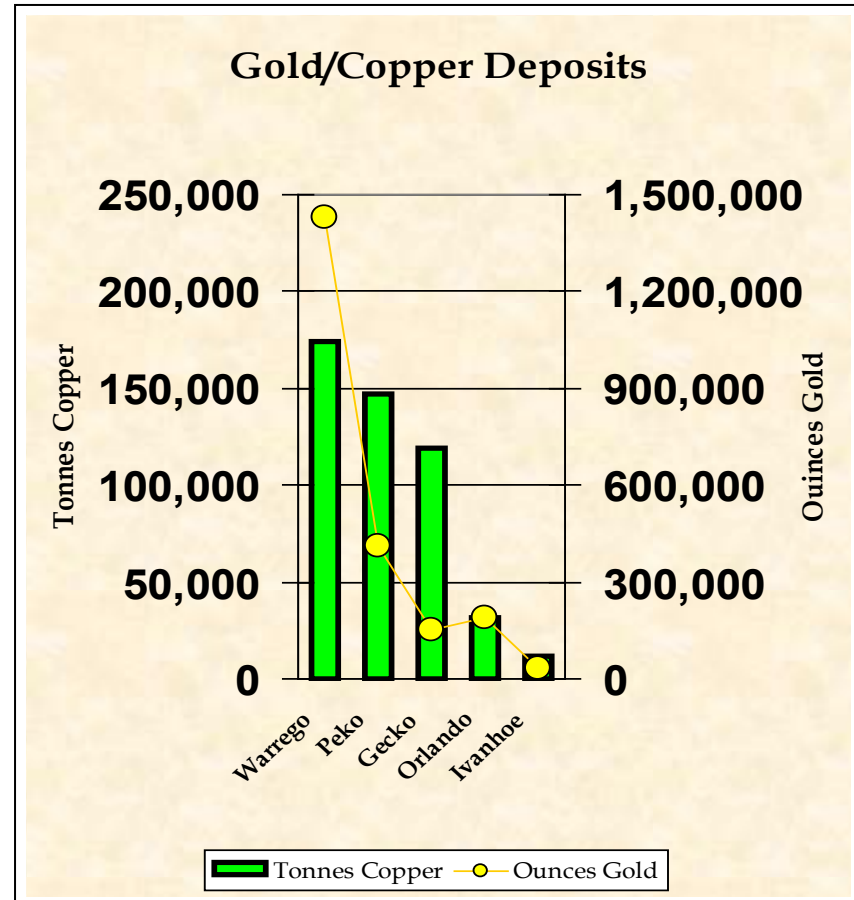
The discovery team

Hermitage Project - Tennant Creek NT
100% ERM project (*not part of the JV*)

Discovery drill hole in November 2021 – ranked as one of the best global copper intersections... with more to come!

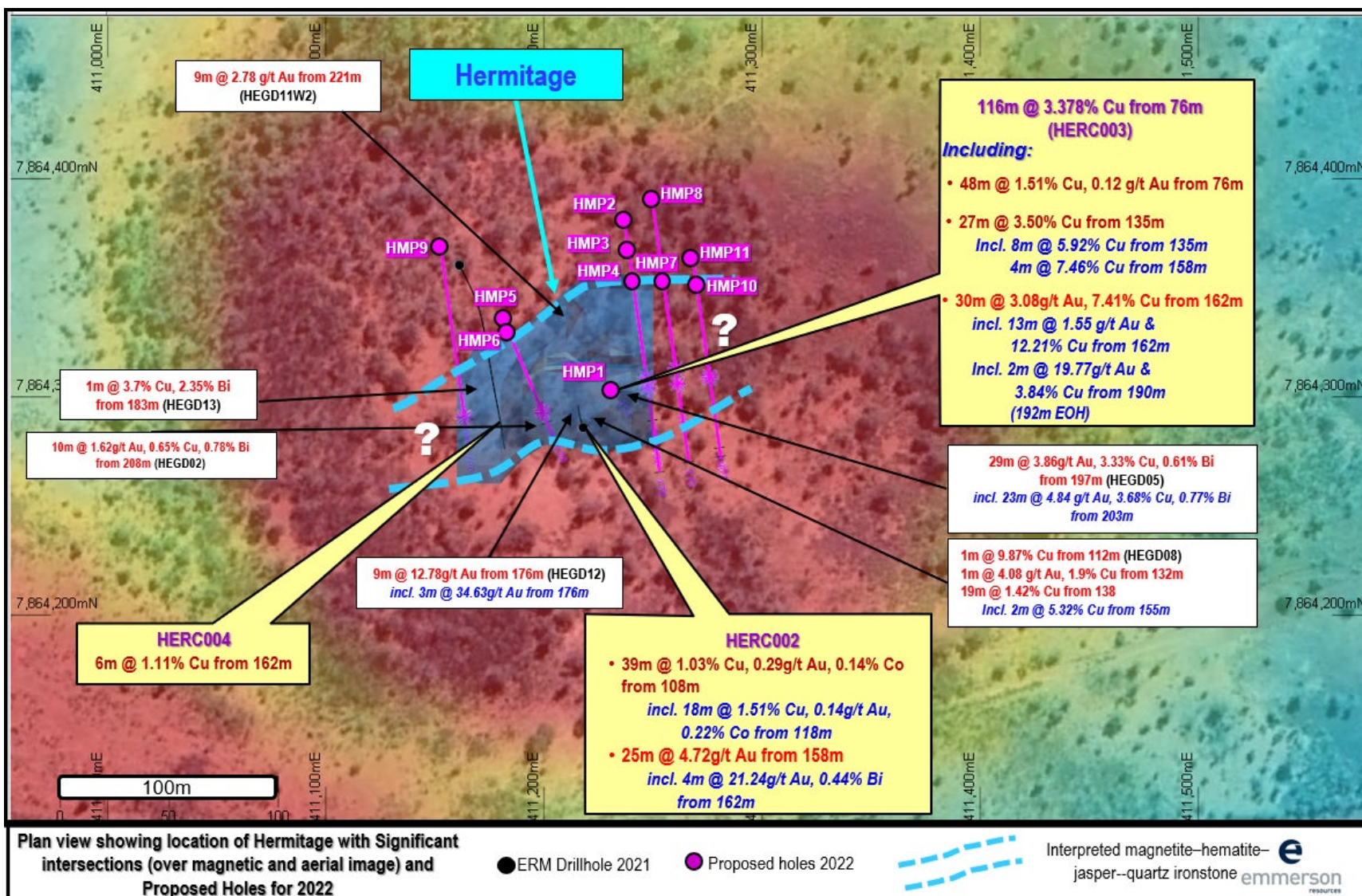


Tennant Creek – a company making mineral field... but



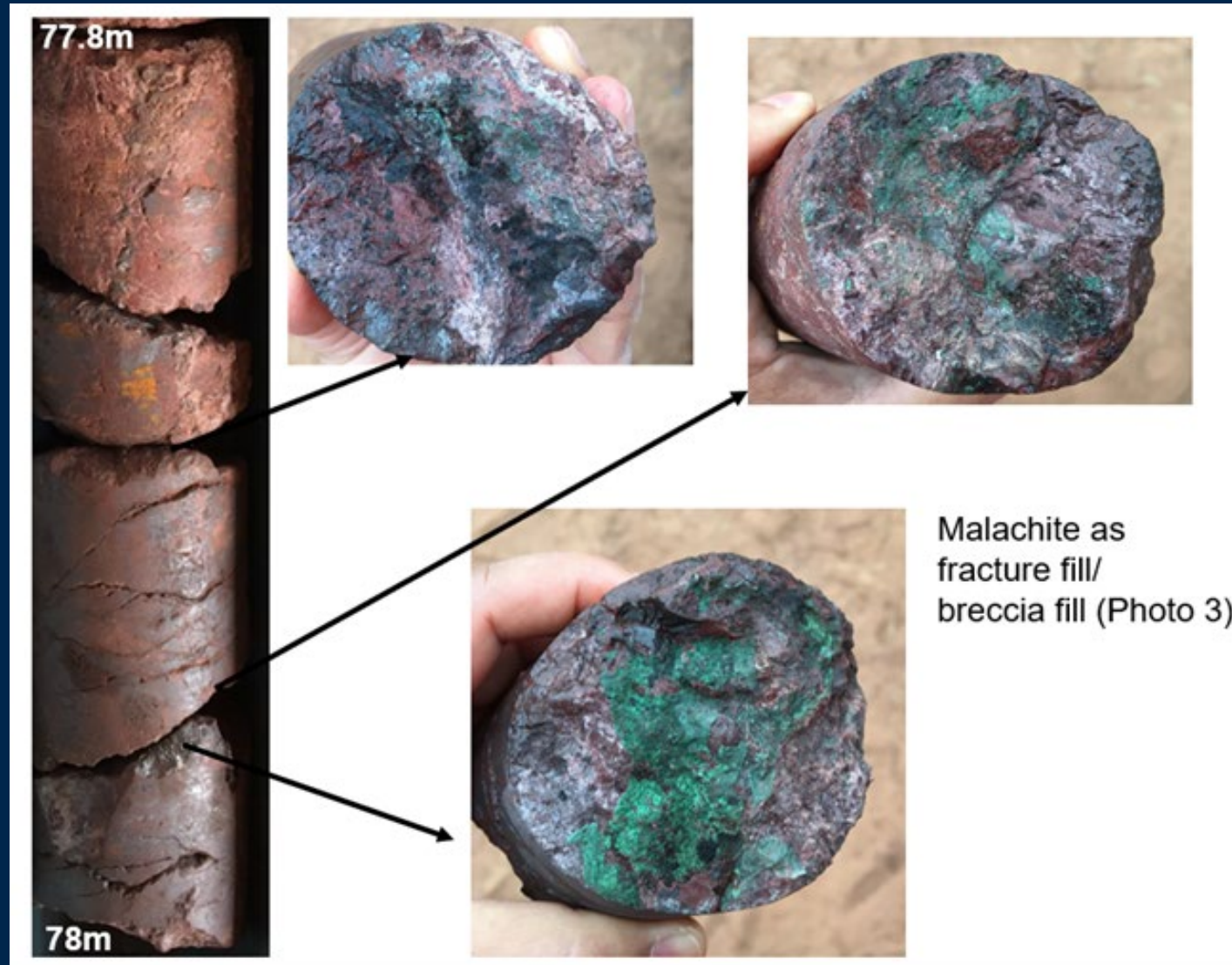
DEPOSIT	PLAN	CROSS SECTION	LONG SECTION
Warrego 6.9 Mt 1.46m oz Au 172 500 t Cu			
Nobles Nob 2.14 Mt 1.14m oz Au			
Gecko Au 257 000 oz 320 000 t Cu			
White Devil 1.7 Mt 734 000 oz Au			
Juno 0.46 Mt 864 000 oz Au			
Argo 0.3 Mt 135 000 oz Au			

ASX Nov 2021: 116m at 3.4% copper and 0.88g/t gold at Hermitage: the drill hole stopped in 2m at 20g/t gold and 3.9% copper



ASX 10 May 2022: New Zone of Copper

38m of visual copper in drill hole HERCDD005

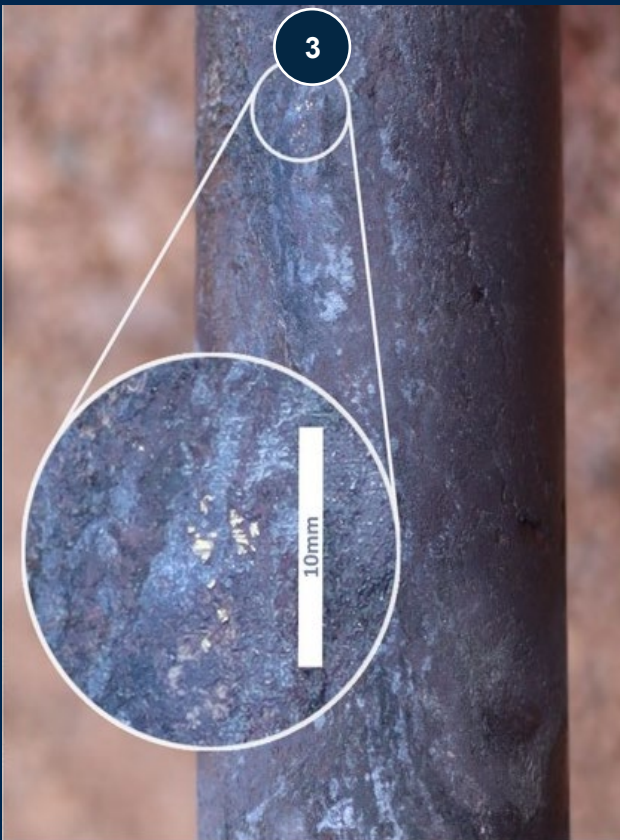
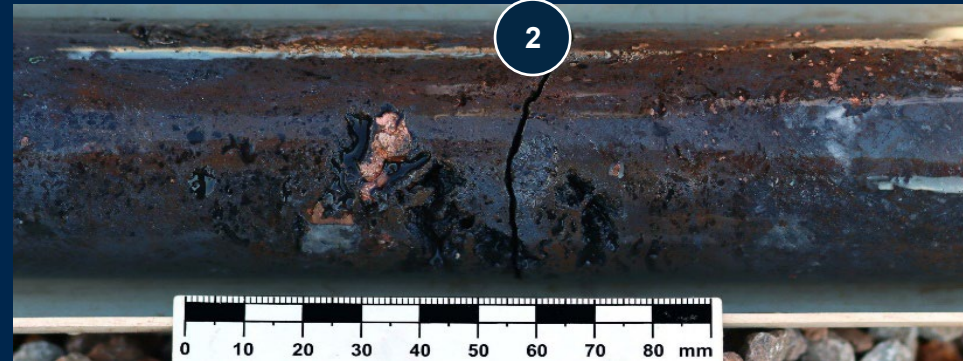
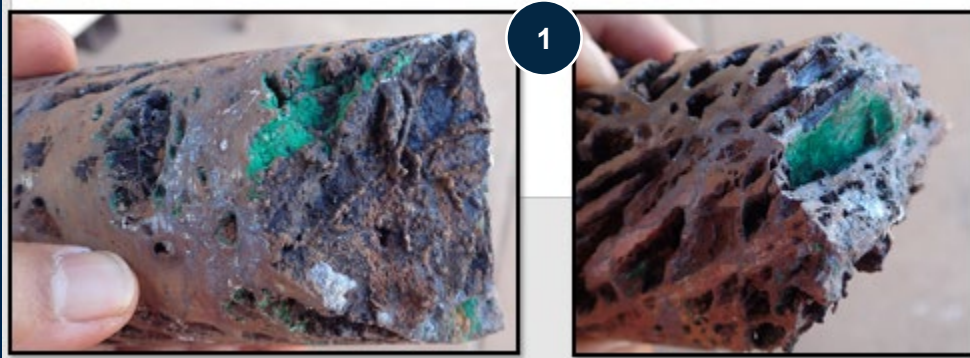


ASX 14 June 2022: Visual Gold & Copper in HERCDD010



New zones of gold and copper now with depth potential

emmerson
resources



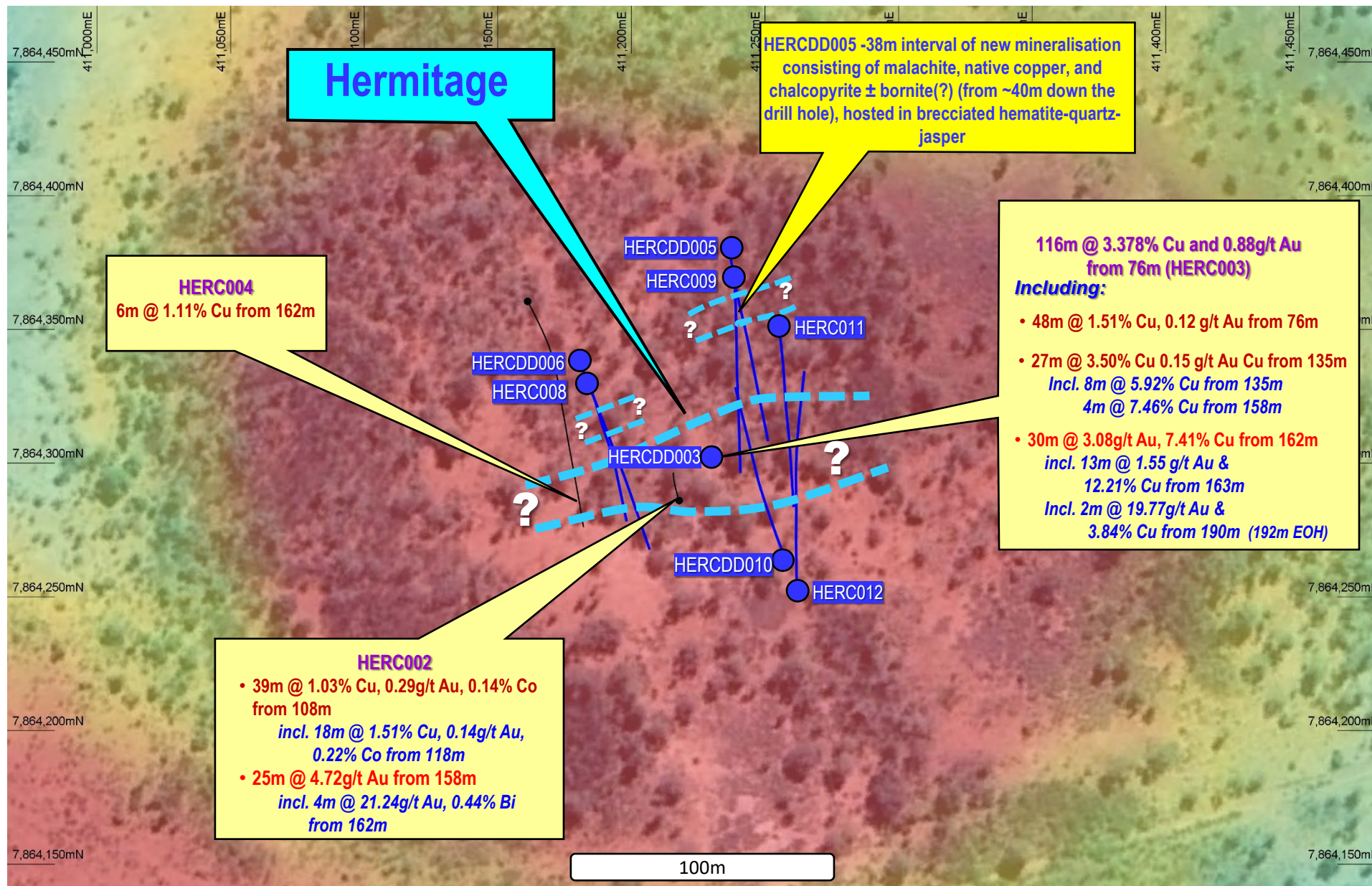
Four main zones of mineralisation in HERCDD010 (from shallow to deep):

Photo 1: malachite (copper carbonate) in hematite ironstone with voids/vugs (from 83m).

Photo 2: native copper (dark brown and brassy color) in hematite-magnetite ironstone and vugs (from 129.6m).

Photo 3: **free disseminated gold** in hematite-magnetite-quartz ironstone (from 164.7m).

Photo 4: **new zone** (below the fault) of chalcopyrite (yellow) and bornite (purple/brown) in quartz stockwork veins (from 190m).



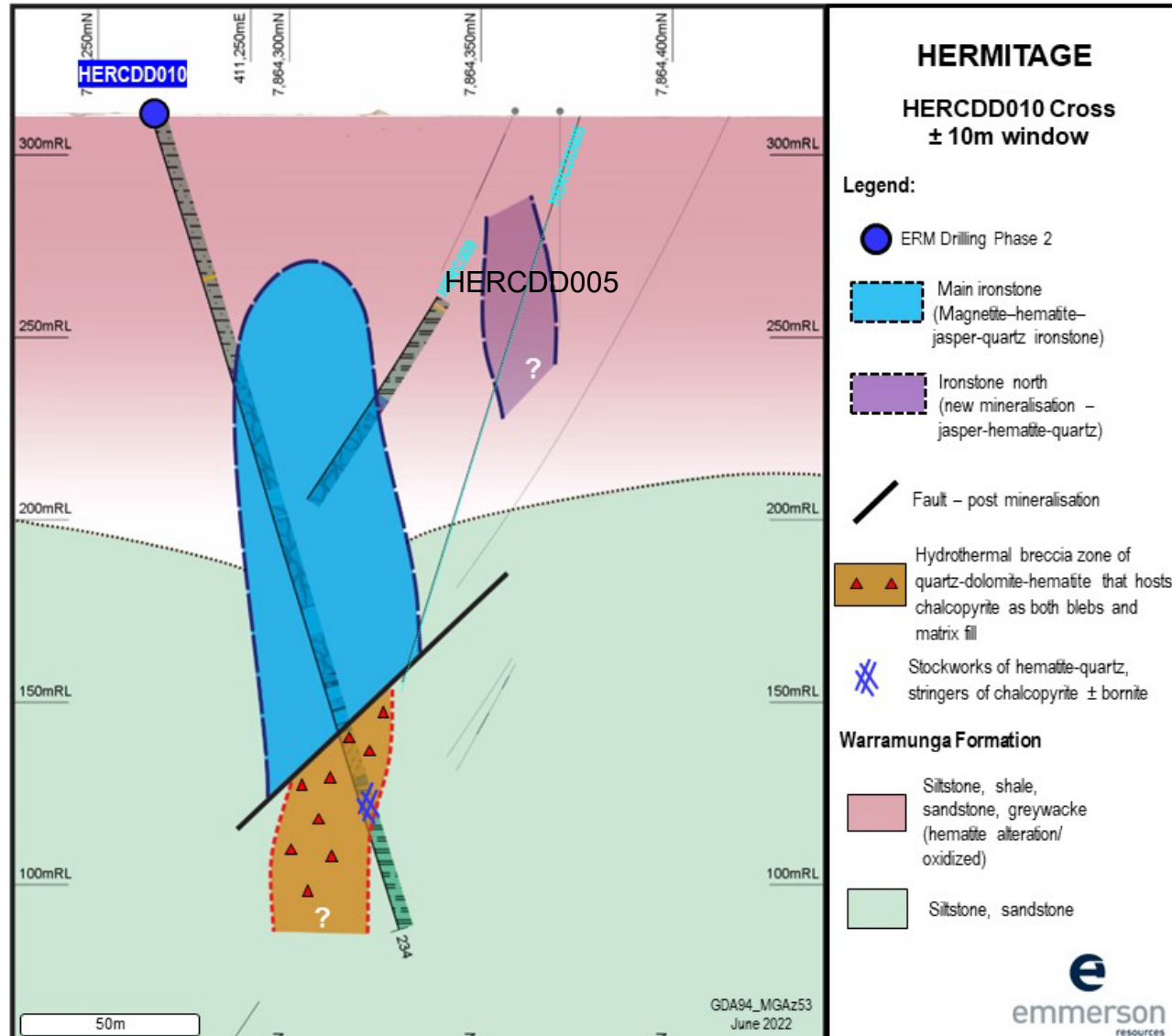
Plan view showing location of Hermitage with Significant intersections (over magnetic and aerial image)

● ERM Drilling Phase 1 ● ERM Drilling Phase 2



Interpreted magnetite-hematite-jasper-quartz ironstone

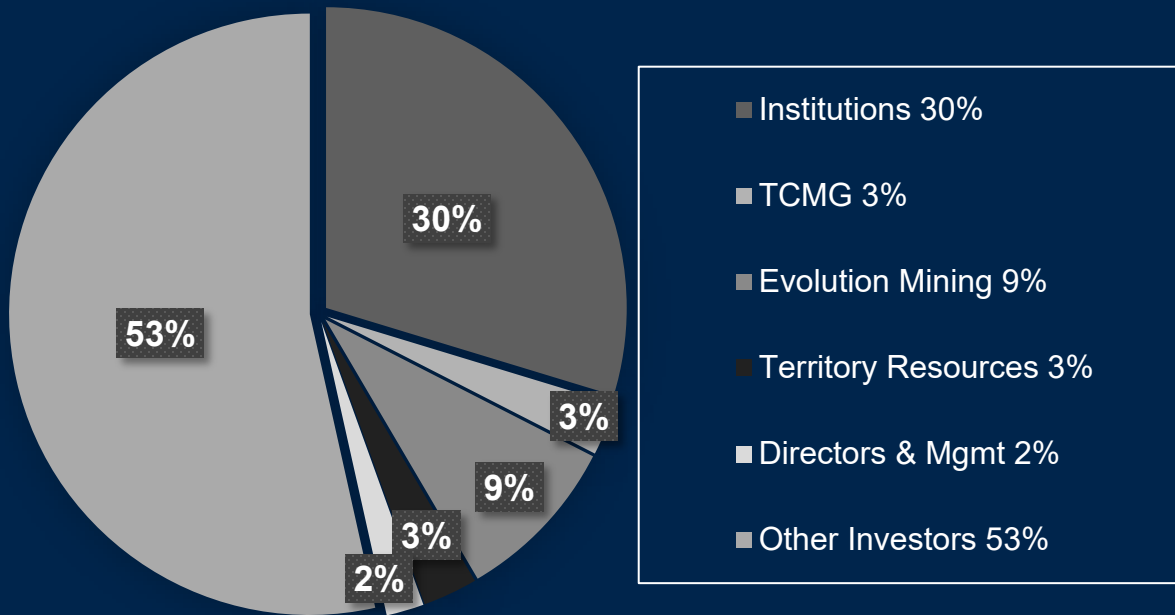
Schematic N-S cross section – showing scissor drill hole HERCDD010 and new copper zone below the fault



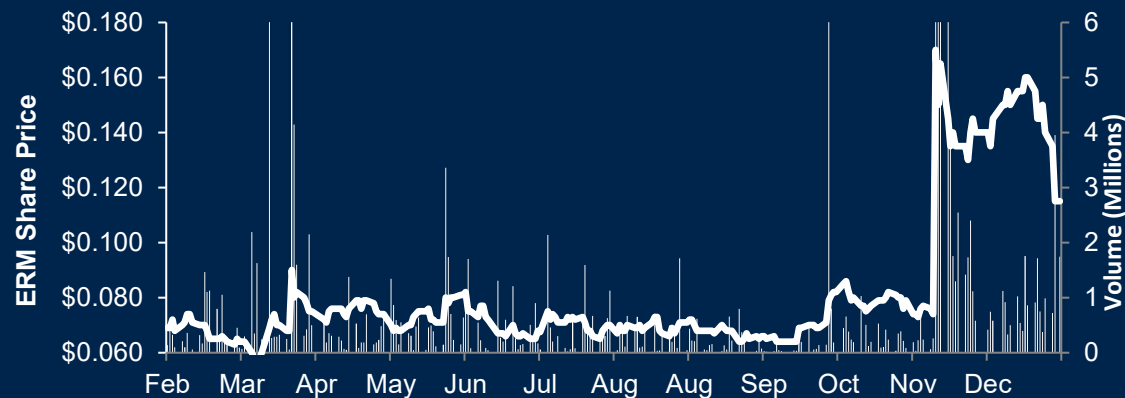
Latest drilling reveals:

- Tabular to pipelike iron-oxide bodies controlled by E-W shear zone
- Steep north plunge and horizontally constrained surface area
- Distinct metal zonation (shallow to deep) of:
 - **copper oxide (malachite)**
 - **Native copper**
 - **Gold**
 - All hosted by iron oxide (hm-mt-ch)
- **New chalcopyrite-bornite zone** in breccia and stockwork quartz veins of unknown dimensions (below the fault)
- Open in all directions as evidence by HERCDD005 and now down plunge in HERCDD010

Capital structure



12 month share price



CORPORATE SNAPSHOT

ASX code	ERM
Shares on issue ^{1,2}	544.71 million
Options on issue – unlisted ³	101.88 million
Performance rights on issue	6.00 million
Market capitalisation ^{1,2} (\$0.099/share – 27/5/22)	\$53.93 million
Cash (31/3/22) ^{1,2}	\$8.68 million
Enterprise value (27/5/22) ^{1,2}	\$45.25 million

1. Includes securities issued and funds raised (less costs) pursuant to Placement announced on 14 April 2022.

2. Includes securities issued and funds raised (less costs) pursuant to SPP announced on 20 May 2022.

3. Exercise price range from \$0.11 to \$0.20. Expiry date range from April 2023 to December 2025.

Board of Directors



Mr. Andrew McIlwain

B.Eng (Mining)

Non-Executive Chairman

Mining Engineer with more than 25 years' experience in operational, senior management and executive roles (MIM, WMC, UML & others).



Mr. Robert Bills

B.Sc, M.Sc, FSEG, FAIG

Managing Director and Chief Executive Officer

Geologist with over 30 years' experience in exploration, mining and senior management roles in WMC and BHP. Joined Emmerson in late 2007 as the Managing Director and CEO.



Dr. Allan Trench

B.Sc (Hons), Ph.D, M.Sc, MBA

Non-Executive Director

Geologist/geophysicist with extensive experience in strategy, project development and operations within the natural resource sector.



Alan Tate

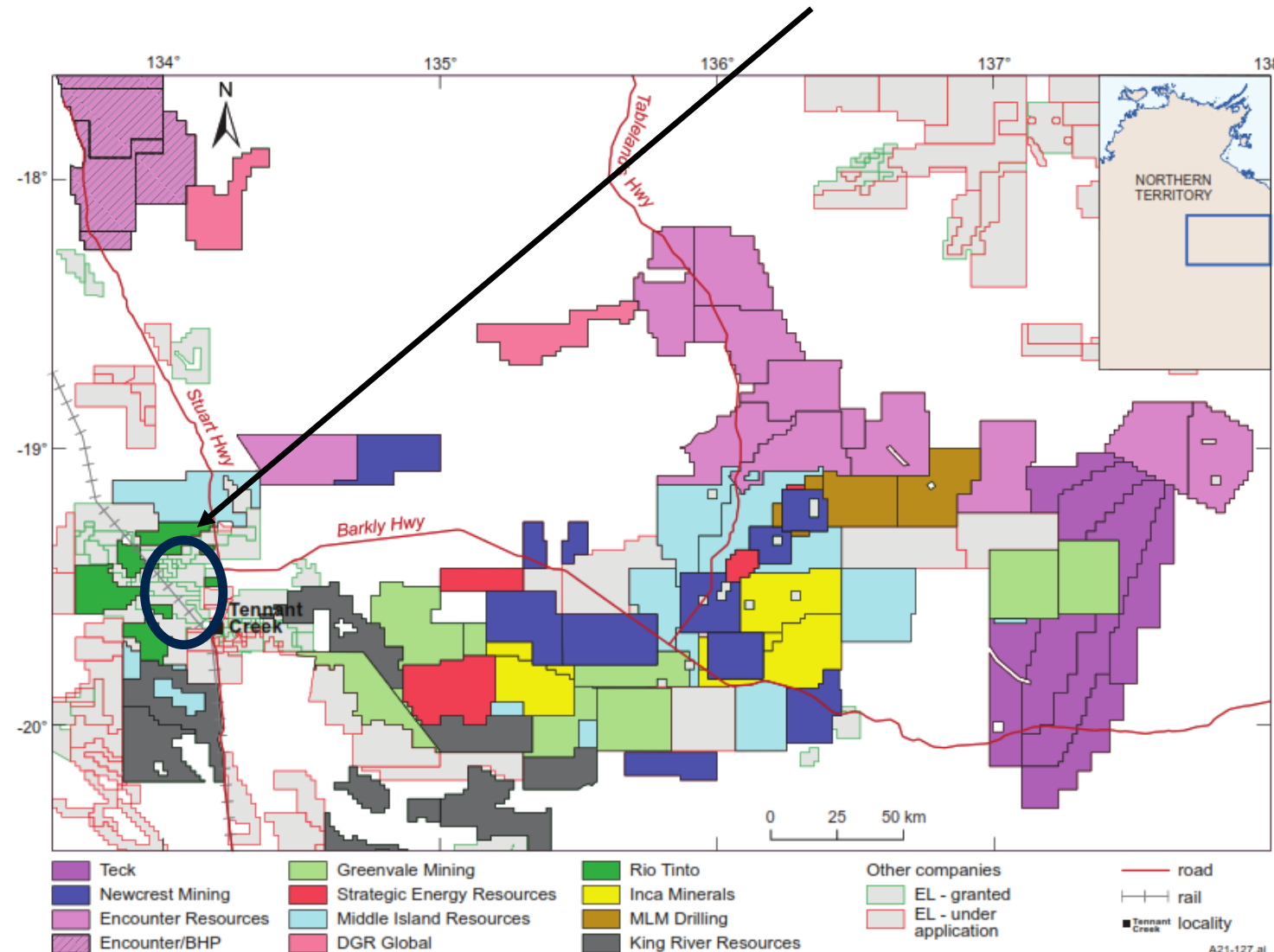
B.Com, FCA, FAICD

Non-Executive Director

Commercial/finance leader with 30 years' experience with a focus on delivering shareholder value, including 15 years' within mining and energy industries.

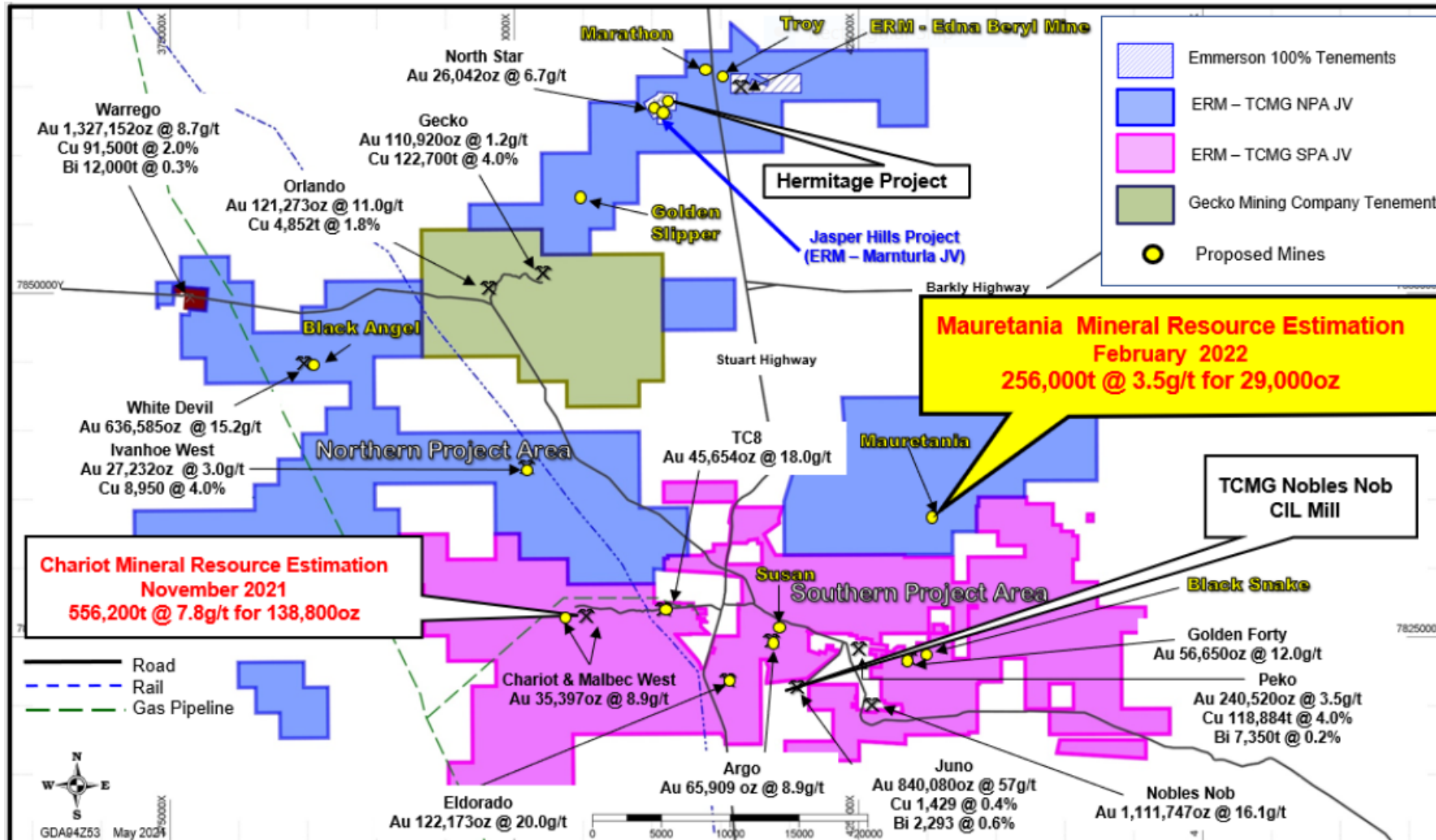
Tennant Creek – an exploration hotspot... Rio, BHP, Newcrest, + many juniors

Emmerson been in Tennant Creek since 2007 and holds 1,700km² of the best ground



Map of exploration licences and application in the Barkly Tableland in March 2021, showing the distribution of tenure of selected exploration companies. Most highlighted licenses were applied for since 2019. (Map from AGES 2021).

Emmerson holds a strategic 1,700km² in the Tennant Creek Mineral Field



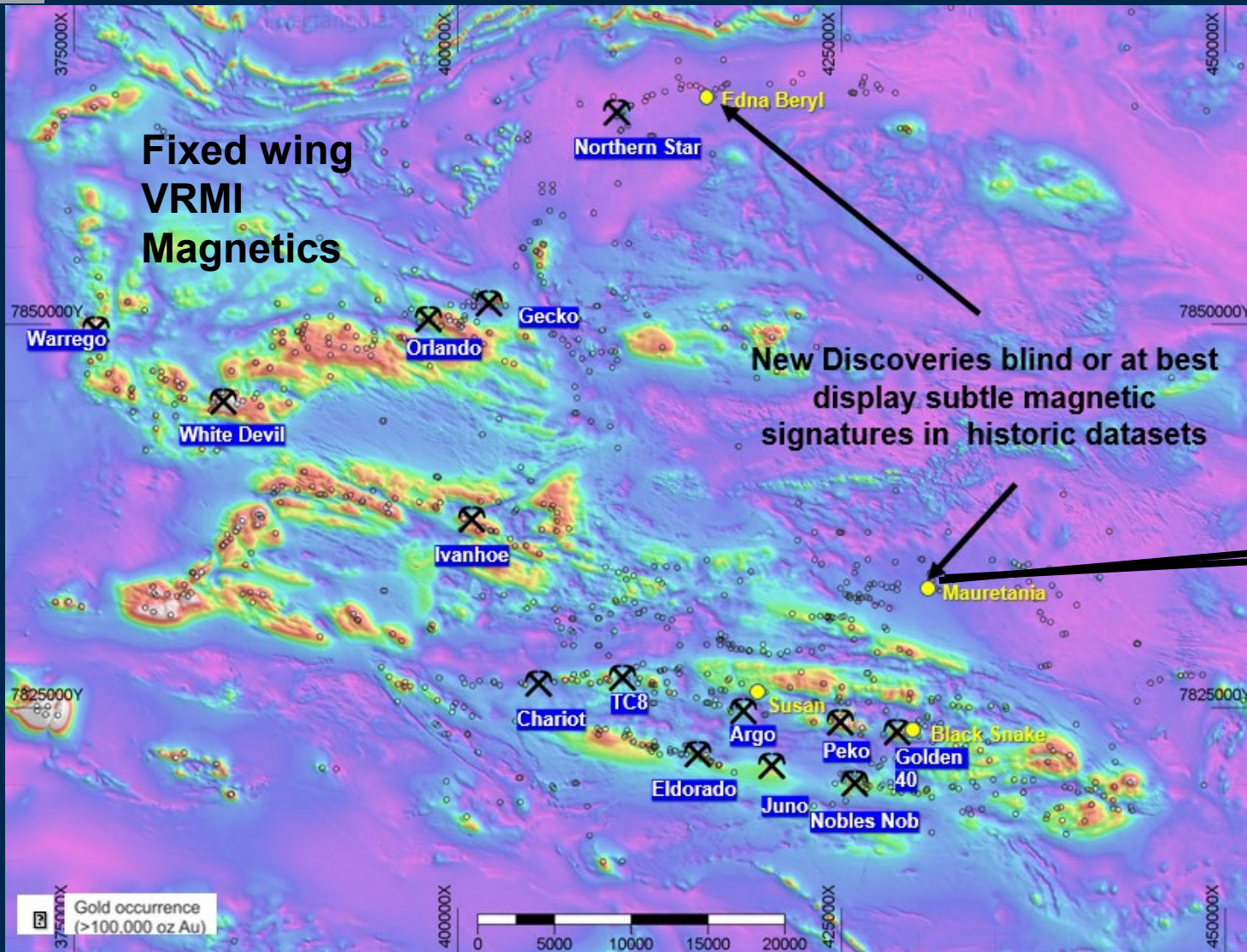
Our JV partners TCMG - privately listed and funded through a number of international private equity firms

TCMG have secured a CIL processing plant... with the objective of unlocking stranded assets in Tennant Creek

Complimentary relationship with ERM consisting of:

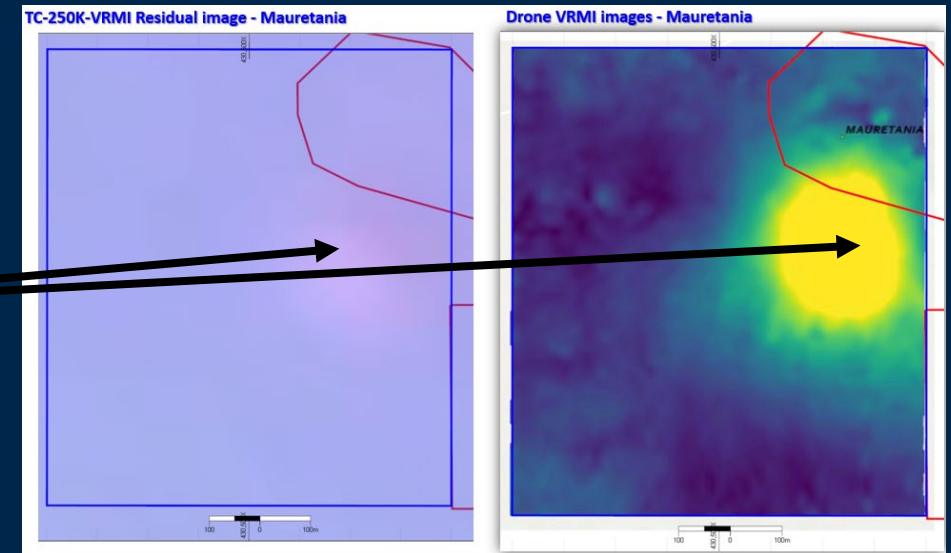
- Exploration JV (TCMG earning in)
- Mining and Processing JV (ERM receives 6% gold production royalty)

High Resolution Magnetics – 10,000-line km survey



Fixed wing
aeromagnetics

Drone high-res
magnetics



Drone magnetics = potential for detecting the overlooked and underexplored



Unlocking the value



Unlocking stranded assets in Tennant Creek via new Strategic Alliance with TCMG



Emerging gold royalty business - aims to generate multiple future royalty streams



Emmerson to continue to drive district-wide exploration and discoveries...multiple drill programs in 2022



Unlocking new ground via partnerships with Traditional Owners



New Mineral Resource Estimates for Chariot and Mauretania... with more to follow



Strong project pipeline and experienced Board and Management Team





Contact

Rob Bills

Managing Director & Chief Executive Officer
Emmerson Resources Limited

+61 8 9381 7838

rbills@emmersonresources.com.au

www.emmersonresources.com.au

ASX: ERM

Competent person statement

The information in this report that relates to database used in the estimation is based on information compiled by Dr Ana Liza Cuison, MAIG, MSEG. Dr Cuison is a Member of the Australian Institute of Geoscientists and has sufficient experience which is relevant to the style of mineralisation and types of deposits under consideration and to the activity which she is undertaking to qualify as a Competent Person as defined in the 2012 Edition of the Australasian Code for Reporting of Exploration Results, Mineral Resources and Ore Reserves. Dr Cuison is a full-time employee of the Company and consents to the inclusion in this report of the matters based on her information in the form and context in which it appears.

The information in this report that relates to Mineral Resource estimate and classification for the Chariot Gold deposit is based on information compiled by Justine Tracey. Justine Tracey is an employee of Optiro Pty Ltd, and a Member of the Australasian Institute of Mining and Metallurgy and the Australian Institute of Geoscientists. Justine Tracey has sufficient experience which is relevant to the style of mineralisation and type of deposit under consideration and the activity she is undertaking to qualify as a Competent Person as defined in the 2012 Edition of the "Australasian Code for Reporting of Exploration Results, Mineral Resources and Ore Reserves ('the JORC Code')". Justine Tracey consents to the inclusion in the report of the matters based on the information in the form and context in which it appears.

Forward-Looking Statements

This document may include forward-looking statements. Forward-looking statements include, but are not limited to, statements concerning Emmerson Resources Limited's anticipated future events, including future resources and exploration results, and other statements that are not historical facts. When used in this document, the words such as "could," "estimate," "plan," "expect," "intend," "may," "potential," "should," and similar expressions are forward-looking statements. Although Emmerson believes that its expectations reflected in these forward-looking statements are reasonable, such statements involve risks, assumptions, uncertainties, and other important factors, many of which are beyond the control of the Company, and which may cause actual results, performance, or achievements to differ materially from those expressed or implied by such statements.

The Company does not undertake any obligation to update forward-looking statements even if circumstances or management's estimates or opinions should change. Forward-looking statements are provided as a general guide only and should not be relied on as an indication or guarantee of future performance. Given these uncertainties, investors should not place undue reliance on forward-looking statements. The Company cautions investors against using this announcement solely as a basis for investment decisions without regard for this disclaimer.

Regulatory Information

The Company does not suggest that economic mineralisation is contained in the untested areas, the information contained relating to historical drilling records have been compiled, reviewed and verified as best as the Company was able. As outlined in this presentation the Company is planning further drilling programs to understand the geology, structure and potential of the untested areas. The Company cautions investors against using this announcement solely as a basis for investment decisions without regard for this disclaimer.

Authorised for release by the Managing Director, Mr Rob Bills