

## New Magmatic Sulphides Intersected at the Narndee Igneous Complex

- NDD0013 intersected 6.7m of strong magmatic sulphide mineralisation, including 3.75m of massive sulphides in five separate intervals
- Massive sulphide mineralisation appears to be thickening along the western margin of the Narndee VC1 target
- A second (RC) drill rig is now site at Narndee & has commenced drilling at VC1
- Mineralisation is currently open to the East, West and North

Aldoro Resources Limited (**Aldoro, The Company**) (ASX: ARN) is pleased to provide an exploration update for the VC1 target at the Narndee Igneous Complex (**NIC, The Project**). NDD0013 has been completed, resulting in one of the best magmatic sulphide intersections to date at VC1.



Figure 1. Massive sulphides intersected by NDD0013.

### About VC1 Results and Drill Targeting

Drill holes NDD0009 and NDD0013 have been completed at VC1 since the previous update. Significant intersections of nickel-copper sulphides were intersected by both holes as follows;

#### NDD0009

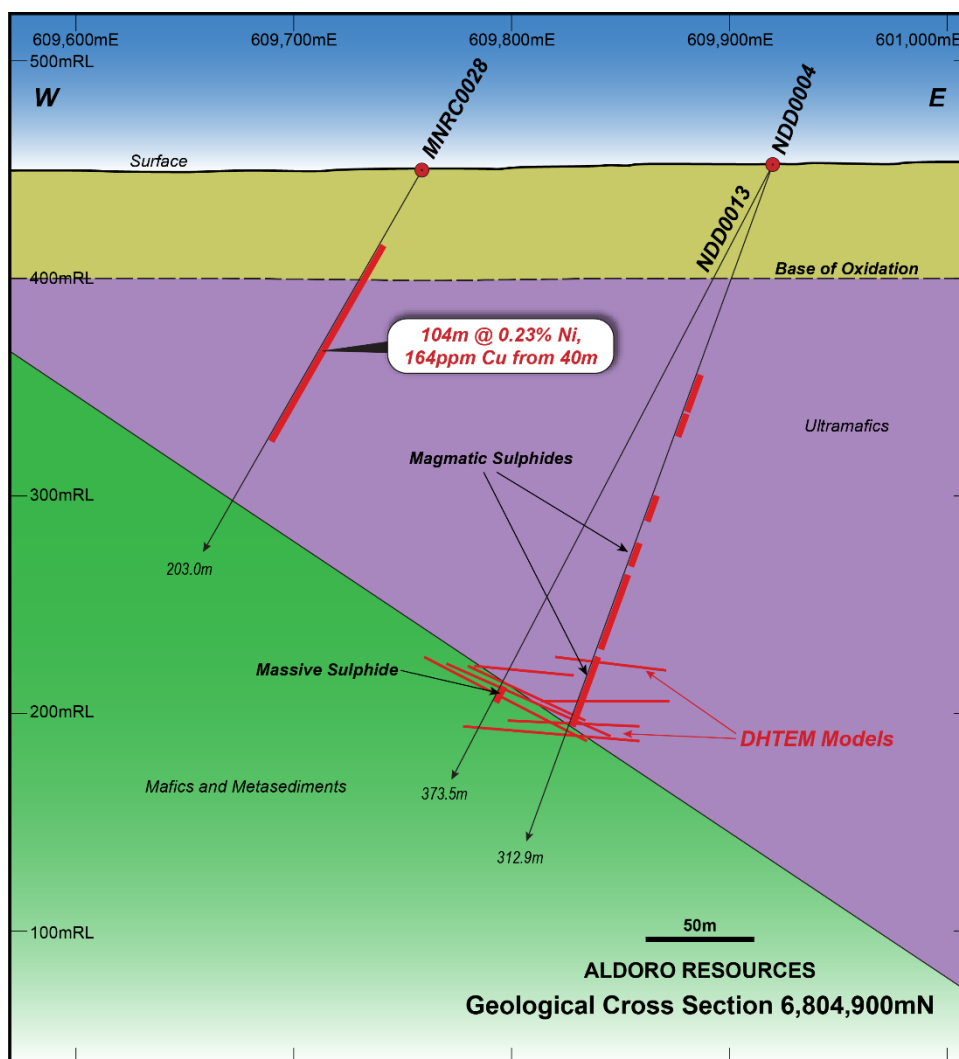
- 96.05m – 96.45m, disseminated sulphide
- 102.00m – 104.15m, disseminated sulphide
- 109.45m – 109.9m, veined sulphide
- 120.1m – 120.65m, disseminated sulphide

NDD0013

- 265.8m – 270.65m, blebby sulphides
- 270.65m – 271.3m, massive sulphide
- 271.3m – 271.5m, disseminated sulphide
- 271.5m – 271.7m, massive sulphide
- 271.7m – 274.15m, disseminated sulphide

The sulphide assemblage in order of abundance intersected by all reported drillholes appears to be pyrrhotite, pentlandite, chalcopyrite, and pyrite. However, petrographic and geochemical analyses are required to confirm the species, geological setting, and relative abundance. Bulk sulphide abundance definitions are as follows (note these are visual estimates);

- Disseminated, blebby, breccia, and or veined sulphide - 1% to 20% sulphide
- Matrix sulphide - 20% to 40% sulphide
- Semi massive sulphide - 40% to 80% sulphide
- Massive sulphide - greater than 80% sulphide



### VC1 RC Drill Program

An RC rig has mobilised to the site to commence a grid-style drilling program over the southern portion of the VC1 target. The RC gridlines will run between the existing diamond drill fans to achieve an approximately 40m by 40m drill spacing over a plunge extent of about 400m. This program aims to achieve a JORC 2012 reportable Mineral Resource for VC1.

The Mineralisation at VC1 starts at 100m vertically below the surface at the southern end of the planned RC program. It will be tested to about 270m vertically below the surface at the northern end of the grid. Mineralisation is currently open to the east, west, and north.

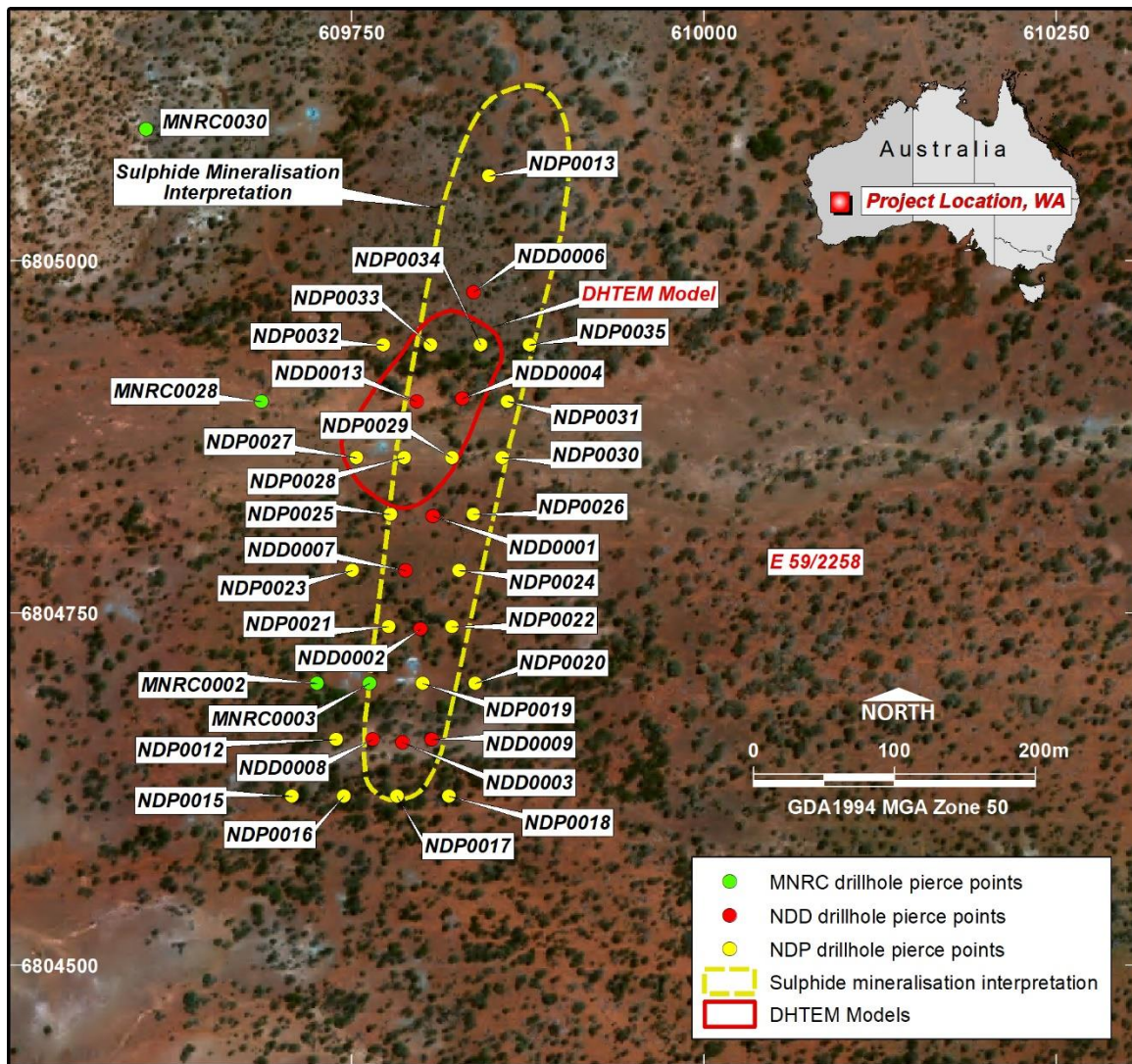
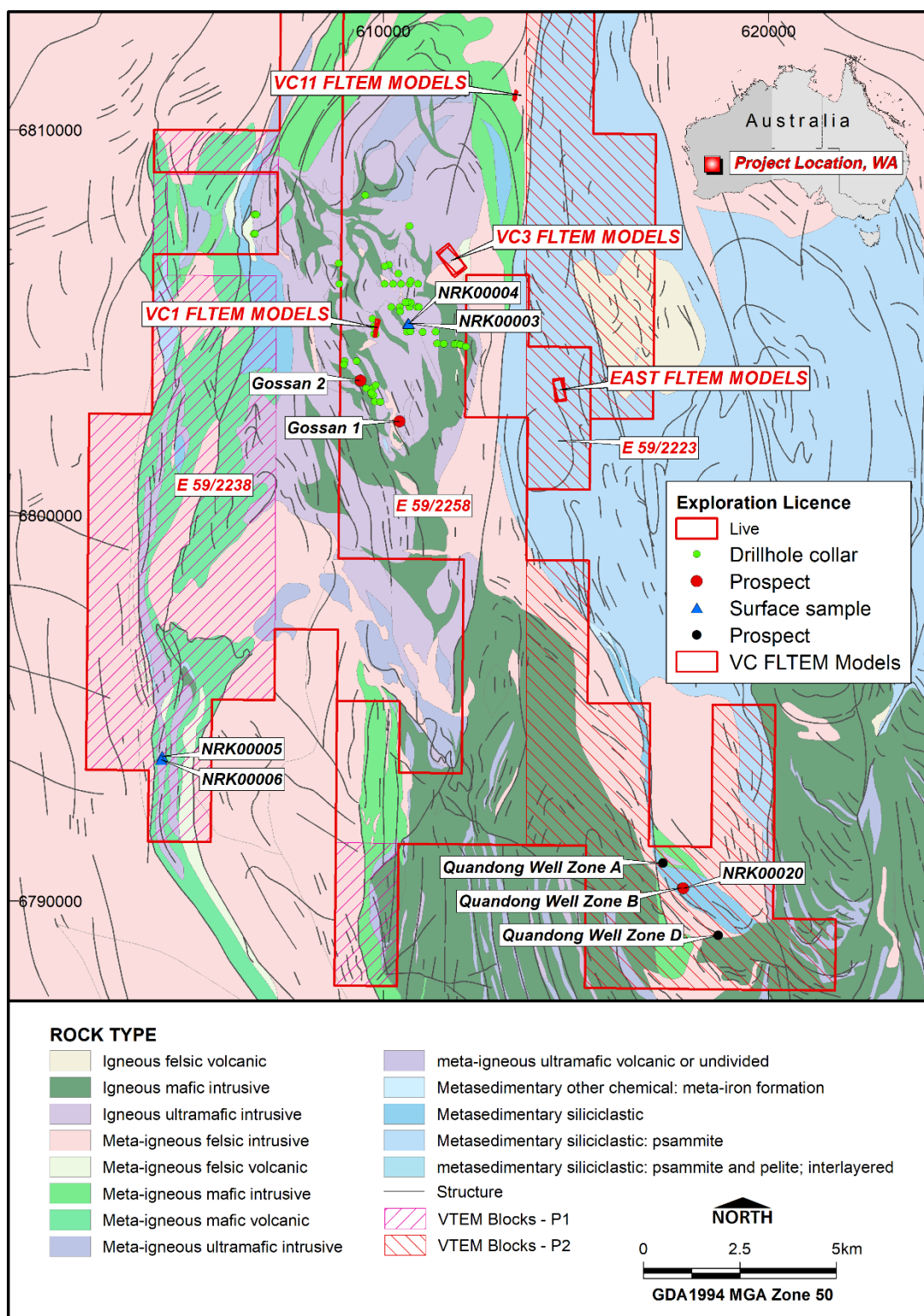


Figure 3. Plan projection showing completed and planned drillhole pierce points of the VC1 target. Note NDP drillhole pierce points are planned drillholes.





## Forward Plan

The RC rig will be drilling at VC1 for two to three weeks before demobilising to the Niobe Project to complete Lithium / Rubidium resource drilling at Aldoro's tenement.

The diamond rig has four holes to drill at VC1, before moving back to VC11 to test an off hole nickel sulphide target there. A deep stratigraphic hole is also planned between VC3 and VC11.

The High-Power Fixed Loop Electromagnetics (HPFTLEM) survey is now underway, screening for deeper or very conductive targets in the VC1, VC3, and VC11 areas.

Table 1. Details of drilling reported in this announcement, including holes completed by Maximus Resources in 2012.

Hole ID	Length	Collar Location MGA50			Dip	Azimuth	From m	To m	Ni Grade %	Cu Grade ppm	Width m	Intersection Description
		East	North	RL								
MNRC0002	203	609760	6804700	448	-70	270	64	104	0.19	803	40	40m at 0.19% Ni and 803ppm Cu from 64m
MNRC0003	191	609800	6804700	448	-70	270	88	111	0.18	579	23	23m at 0.18% Ni and 579ppm Cu from 88m
MNRC0028	203	609760	6804900	455	-60	270	40	144	0.23	164	104	104m at 0.23% Ni and 164ppm Cu from 40m
MNRC0030	250	609718	6805093	455	-60	270	4	224	0.22	70	220	220m at 0.22% Ni and 70ppm Cu from 4m
NDD0001	265	609880	6804820	450	-70	270	212.75	214.40	0.93	0.15	1.65	1.65m at 0.93% Ni, 0.15% Cu, 0.07% Co, 0.26ppm Pd from 212.75m
NDD0002	231.3	609850	6804740	449	-70	270	146.40	150.20	0.78	0.46	3.8	3.8m at 0.78% Ni, 0.46% Cu, 0.06% Co, 0.26ppm Pd from 146.4m
NDD0003	159.3	609826	6804660	448	-70	270						Assays Awaited
NDD0004	312.9	609920	6804900	452	-70	270						Assays Awaited
NDD0005	654.9	611810	6806700	456	-70	270						Assays Awaited
NDD0006	399.9	609960	6804980	453	-65	270						Assays Awaited
NDD0007	252.8	609850	6804780	450	-70	270						Assays Awaited
NDD0008	156.6	609826	6804660	448	-55	270						Assays Awaited
NDD0009	231.9	609826	6804660	448	-80	270						Assays Awaited
NDD0010	225.8	613381	6810960	456	-60	90						Assays Awaited
NDD0011	291.7	613305	6810880	456	-60	90						Assays Awaited
NDD0012	354.8	614465	6803260	435	-70	90						Assays Awaited
NDD0013	373.5	609920	6804900	452	-63	270						Assays Awaited

Table 2. Summary logs of holes reported in this announcement.

Hole ID	From m	To m	Primary Lithology	Secondary Lithology	Comments
NDD0013	0	35.35	Saprolite and Saprock		
NDD0013	35.35	70.10	Peridotite	Harzburgite	
NDD0013	70.10	226.70	Harzburgite	Peridotite	
NDD0013	226.70	227.75	Basalt		
NDD0013	227.75	265.80	Peridotite	Pyroxenite	
NDD0013	265.80	270.65	Pyroxenite	Magmatic Sulphide	5% to 25% disseminated sulphide
NDD0013	270.65	271.30	Massive sulphide		
NDD0013	271.30	271.50	Peridotite	Magmatic Sulphide	5% to 25% disseminated sulphide
NDD0013	271.50	271.70	Massive sulphide		
NDD0013	271.70	272.50	Peridotite	Magmatic Sulphide	5% to 25% disseminated sulphide
NDD0013	272.50	274.15	Peridotite	Magmatic Sulphide	5% to 25% disseminated sulphide
NDD0013	274.15	275.60	Massive sulphide		
NDD0013	275.60	276.00	Peridotite	Magmatic Sulphide	5% to 25% disseminated sulphide
NDD0013	276.00	276.55	Massive sulphide		
NDD0013	276.55	276.85	Peridotite	Magmatic Sulphide	5% to 25% disseminated sulphide
NDD0013	276.85	277.35	Massive sulphide		
NDD0013	277.35	373.50	Basalt	Metasediment	

Hole ID	From m	To m	Primary Lithology	Secondary Lithology	Comments
NDD0009	0.00	32.75	Saprolite and Saprock		
NDD0009	32.75	76.85	Olivine Websterite	Harzburgite	
NDD0009	76.85	80.30	Olivine Gabbronorite		
NDD0009	80.30	96.05	Basalt		
NDD0009	96.05	96.45	Basalt	Magmatic Sulphide	25% blebby sulphide
NDD0009	96.45	102.00	Basalt		
NDD0009	102.00	104.15	Gabbronorite	Magmatic Sulphide	25% disseminated sulphide
NDD0009	104.15	105.10	Basalt	Gabbronorite	
NDD0009	105.10	109.45	Gabbronorite		
NDD0009	109.45	109.90	Gabbronorite	Magmatic Sulphide	70% vein sulphide
NDD0009	109.90	120.10	Peridotite		
NDD0009	120.10	120.65	Peridotite	Magmatic Sulphide	20% banded sulphide
NDD0009	120.65	131.20	Pyroxenite	Gabbronorite	
NDD0009	131.20	231.90	Basalt	Metasediment	

ENDS

### About Aldoro Resources

Aldoro Resources Ltd is an ASX-listed (**ASX: ARN**) mineral exploration and development company. Aldoro has a portfolio of gold and nickel focused advanced exploration projects, all located in Western Australia. The Company's flagship project is the Narndee Igneous Complex, which is prospective for Ni-Cu-PGE mineralisation. The Company's other Ni-Cu-PGE projects include the Cathedrals Belt Nickel Project, with a significant tenement holding surrounding St George Mining's (**ASX: SGQ**) Mt Alexander Project, the Leinster Nickel Project (Ni), and the Windimurra Igneous Complex (Ni-Cu-PGE, Li).

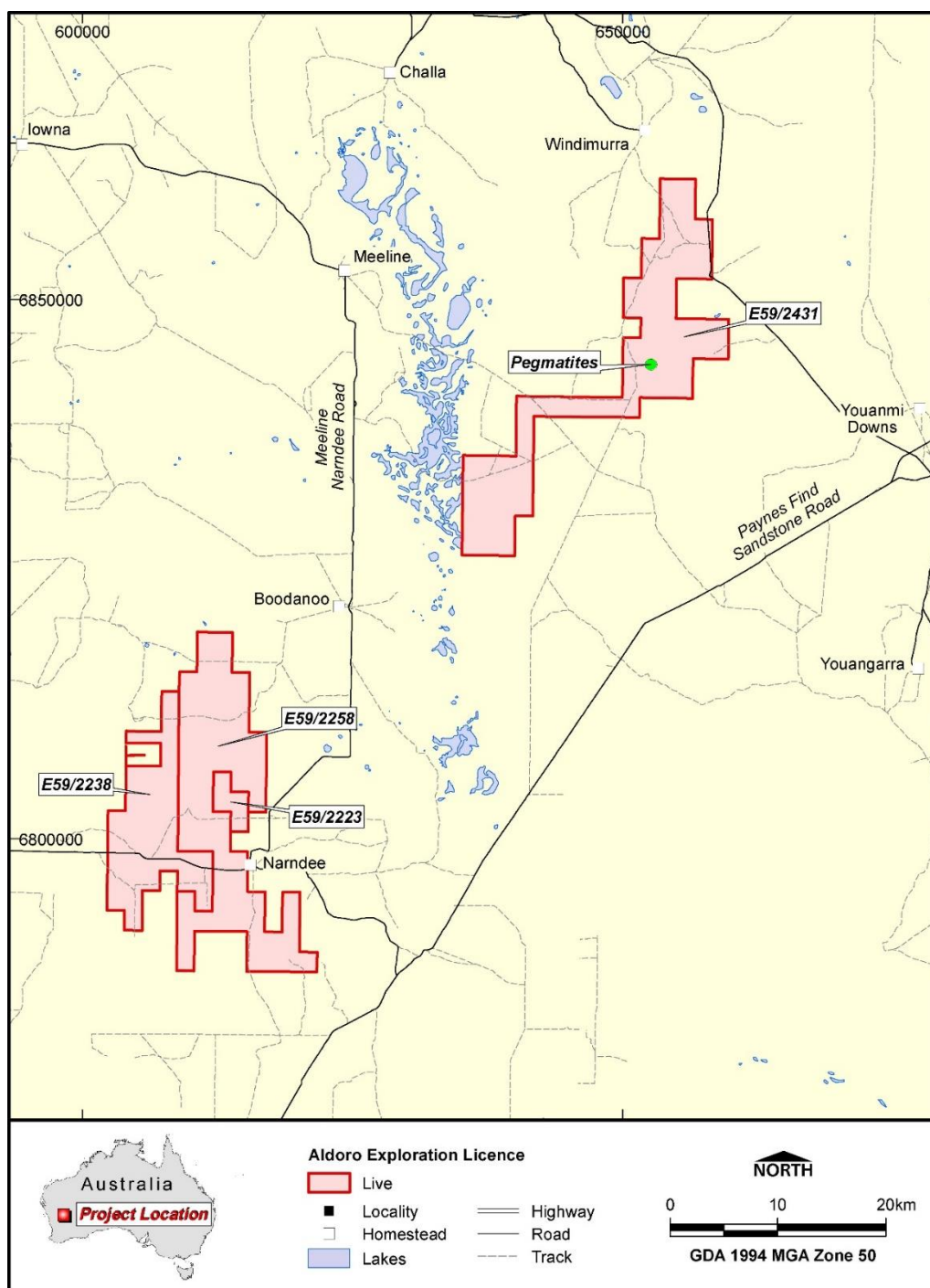


Figure 3. Location of the ARN landholding over the NIC.

**Disclaimer**

Some of the statements appearing in this announcement may be in the nature of forward-looking statements. You should be aware that such statements are only predictions and are subject to inherent risks and uncertainties. Those risks and uncertainties include factors and risks specific to the industries in which Aldoro operates and proposes to operate as well as general economic conditions, prevailing exchange rates and interest rates and conditions in the financial markets, among other things. Actual events or results may differ materially from the events or results expressed or implied in any forward-looking statement. No forward-looking statement is a guarantee or representation as to future performance or any other future matters, which will be influenced by a number of factors and subject to various uncertainties and contingencies, many of which will be outside Aldoro's control.

Aldoro does not undertake any obligation to update publicly or release any revisions to these forward-looking statements to reflect events or circumstances after today's date or to reflect the occurrence of unanticipated events. No representation or warranty, express or implied, is made as to the fairness, accuracy, completeness or correctness of the information, opinions or conclusions contained in this announcement. To the maximum extent permitted by law, none of

Aldoro, its Directors, employees, advisors or agents, nor any other person, accepts any liability for any loss arising from the use of the information contained in this announcement. You are cautioned not to place undue reliance on any forward-looking statement. The forward-looking statements in this announcement reflect views held only as of the date of this announcement.

This announcement is not an offer, invitation or recommendation to subscribe for or purchase securities by Aldoro. Nor does this announcement constitute investment or financial product advice (nor tax, accounting or legal advice) and is not intended to be used for the basis of making an investment decision. Investors should obtain their own advice before making any investment decision.

**Competent Person Statement**

The information in this announcement that relates to Exploration Results and other technical information complies with the 2012 Edition of the Australasian Code for Reporting of Exploration Results, Mineral Resources and Ore Reserves (JORC Code). It has been compiled and assessed under the supervision of Luke Marshall, a geological consultant to Aldoro Resources Ltd. Mr Marshall is a Member of the Australasian Institute of Geoscientists and has sufficient experience that is relevant to the style of mineralisation and type of deposit under consideration and to the activity being undertaken to qualify as a Competent Person as defined in the 2012 Edition of the JORC Code. Mr Marshall consents to the inclusion in this announcement of the matters based on his information in the form and context in which it appears.

***This announcement was approved for release to ASX by the Board of Aldoro Resources***



**JORC Code, 2012 Edition – Table 1**

**Section 1 Sampling Techniques and Data**

(Criteria in this section apply to all succeeding sections.)

Criteria	JORC Code explanation	Commentary
<i>Sampling techniques</i>	<ul style="list-style-type: none"> <li><i>Nature and quality of sampling (eg cut channels, random chips, or specific specialised industry standard measurement tools appropriate to the minerals under investigation, such as downhole gamma sondes, or handheld XRF instruments, etc). These examples should not be taken as limiting the broad meaning of sampling.</i></li> <li><i>Include reference to measures taken to ensure sample representivity and the appropriate calibration of any measurement tools or systems used.</i></li> <li><i>Aspects of the determination of mineralisation that are Material to the Public Report.</i></li> <li><i>In cases where ‘industry standard’ work has been done this would be relatively simple (eg’ reverse circulation drilling was used to obtain 1 m samples from which 3 kg was pulverised to produce a 30 g charge for fire assay’). In other cases more explanation may be required, such as where there is coarse gold that has inherent sampling problems. Unusual commodities or mineralisation types (eg submarine nodules) may warrant disclosure of detailed information.</i></li> </ul>	<ul style="list-style-type: none"> <li>Diamond drilling produced half NQ core samples which were submitted to Intertek Genalysis Laboratory Services Perth for geochemical analysis</li> <li>Sample intervals were between 0.2m and 1.2m in length as determined by geological changes</li> <li>QAQC samples were included at a minimum of 1 in 20 samples, with extras added around zones of economic interest</li> <li>Samples were analysed by by methods 4A/MS48R and 4AH/OE (four acid digest with ICP-MS finish)</li> <li>Au, Pt, Pd were determined by method FA50/MS (fire assay with an ICP-MS finish)</li> <li>Sampling techniques are unknown for any reported historical drilling but assumed to be industry standard at the time of collection</li> </ul>
<i>Drilling techniques</i>	<ul style="list-style-type: none"> <li><i>Drill type (eg core, reverse circulation, open-hole hammer, rotary air blast, auger, Bangka, sonic, etc) and details (eg core diameter, triple or standard tube, depth of diamond tails, face-sampling bit or other type, whether core is oriented and if so, by what method, etc).</i></li> </ul>	<ul style="list-style-type: none"> <li>Aldoro drilling is diamond core drilling</li> <li>Holes are drilled by HQ3 to fresh rock, cased off and drilled NQ2 to end of the hole</li> <li>The NQ2 part of the hole is oriented by a Reflex Act-IQ orientation tool</li> <li>Bottom of the hole is marked on the core surface using an orientation cradle</li> <li>Reported historical drilling are reverse circulation drillholes</li> </ul>
<i>Drill sample recovery</i>	<ul style="list-style-type: none"> <li><i>Method of recording and assessing core and chip sample recoveries and results assessed.</i></li> <li><i>Measures taken to maximise sample recovery and ensure representative nature of the samples.</i></li> </ul>	<ul style="list-style-type: none"> <li>Core recoveries are measured using industry-standard logging techniques</li> <li>Core recoveries average close to 100% in fresh rock, and 90% in weathered material</li> <li>Sample bias is very unlikely given the very good sample recoveries</li> </ul>

Criteria	JORC Code explanation	Commentary
	<ul style="list-style-type: none"> <li>Whether a relationship exists between sample recovery and grade and whether sample bias may have occurred due to preferential loss/gain of fine/coarse material.</li> </ul>	<ul style="list-style-type: none"> <li>This information is not known for reported historical drilling</li> </ul>
Logging	<ul style="list-style-type: none"> <li>Whether core and chip samples have been geologically and geotechnically logged to a level of detail to support appropriate Mineral Resource estimation, mining studies and metallurgical studies.</li> <li>Whether logging is qualitative or quantitative in nature. Core (or costean, channel, etc) photography.</li> <li>The total length and percentage of the relevant intersections logged.</li> </ul>	<ul style="list-style-type: none"> <li>Aldoro core is logged using industry-standard semi-quantitative logging templates</li> </ul>
Sub-sampling techniques and sample preparation	<ul style="list-style-type: none"> <li>If core, whether cut or sawn and whether quarter, half or all core taken.</li> <li>If non-core, whether riffled, tube sampled, rotary split, etc and whether sampled wet or dry.</li> <li>For all sample types, the nature, quality and appropriateness of the sample preparation technique.</li> <li>Quality control procedures adopted for all sub-sampling stages to maximise representivity of samples.</li> <li>Measures taken to ensure that the sampling is representative of the in situ material collected, including for instance results for field duplicate/second-half sampling.</li> <li>Whether sample sizes are appropriate to the grain size of the material being sampled.</li> </ul>	<ul style="list-style-type: none"> <li>Selected NQ core samples on half cut core based on geology and sulphide occurrence were submitted for geochemical analysis. Lithogeochemical samples were collected the same way on 1m samples on 10m spacings over the entire hole length</li> <li>The size of the sample from the diamond drilling method is the industry standard for the mineralisation style analytical technique</li> <li>Sample preparation includes; drying, crushing, splitting and pulverising before analysis</li> <li>QAQC standard samples of CRM pulps and coarse blank material were included routinely</li> <li>This information is not known for reported historical drilling</li> </ul>
Quality of assay data and laboratory tests	<ul style="list-style-type: none"> <li>The nature, quality and appropriateness of the assaying and laboratory procedures used and whether the technique is considered partial or total.</li> <li>For geophysical tools, spectrometers, handheld XRF instruments, etc, the parameters used in determining the analysis including instrument make and model, reading times, calibrations factors applied and their derivation, etc.</li> <li>Nature of quality control procedures adopted (eg standards, blanks, duplicates, external laboratory checks) and whether acceptable levels of accuracy (ie lack of bias) and precision have been established.</li> </ul>	<ul style="list-style-type: none"> <li>Assay and laboratory procedures are industry standard. The technique is considered near total for the elements of interest.</li> <li>A Bruker S1 Titan with factory calibration was used for pXRF readings</li> <li>Standard reference materials were analysed routinely by pXRF and found to be reporting within acceptable limits</li> <li>For reported historical drilling, QAQC procedures, accuracy, and precision have not been established</li> </ul>

Criteria	JORC Code explanation	Commentary
Verification of sampling and assaying	<ul style="list-style-type: none"> <li>The verification of significant intersections by either independent or alternative company personnel.</li> <li>The use of twinned holes.</li> <li>Documentation of primary data, data entry procedures, data verification, data storage (physical and electronic) protocols.</li> <li>Discuss any adjustment to assay data.</li> </ul>	<ul style="list-style-type: none"> <li>Aldoro's visual intersections are logged, interpreted, and reported by the JORC Competent Person</li> <li>QAQC procedures and documentation of primary data is not available for historic drilling</li> <li>Twinned holes are not being used or reported</li> <li>No adjustments are made to assay data</li> </ul>
Location of data points	<ul style="list-style-type: none"> <li>Accuracy and quality of surveys used to locate drill holes (collar and down-hole surveys), trenches, mine workings and other locations used in Mineral Resource estimation.</li> <li>Specification of the grid system used.</li> <li>Quality and adequacy of topographic control.</li> </ul>	<ul style="list-style-type: none"> <li>Drillhole collars are measured by handheld GPS and checked several times before drilling. Coordinates presented are in GDA94, UTM Zone 50S</li> <li>Collar survey accuracy of reported historic drilling is unknown</li> <li>Aldoro holes are surveyed by a Reflex GYRO SPRINT-IQ</li> <li>No downhole survey information is available for reported historical drilling</li> </ul>
Data spacing and distribution	<ul style="list-style-type: none"> <li>Data spacing for reporting of Exploration Results.</li> <li>Whether the data spacing and distribution is sufficient to establish the degree of geological and grade continuity appropriate for the Mineral Resource and Ore Reserve estimation procedure(s) and classifications applied.</li> <li>Whether sample compositing has been applied.</li> </ul>	<ul style="list-style-type: none"> <li>Not relevant as only eight holes have been completed at irregular spacing</li> <li>A Mineral Resource is not being reported</li> <li>No sample compositing has been applied, but assay results are reported on a length weighted average</li> </ul>
Orientation of data in relation to geological structure	<ul style="list-style-type: none"> <li>Whether the orientation of sampling achieves unbiased sampling of possible structures and the extent to which this is known, considering the deposit type.</li> <li>If the relationship between the drilling orientation and the orientation of key mineralised structures is considered to have introduced a sampling bias, this should be assessed and reported if material.</li> </ul>	<ul style="list-style-type: none"> <li>The orientation of drilling and sampling is as close to perpendicular to the interpreted key mineralised as possible</li> <li>The orientation of drilling to key mineralised structures is an evolving interpretation</li> </ul>
Sample security	<ul style="list-style-type: none"> <li>The measures taken to ensure sample security.</li> </ul>	<ul style="list-style-type: none"> <li>Individual calico sample bags from the drilling were placed in polyweave bags and hand delivered to the assay laboratory in Maddington by company personnel</li> </ul>
Audits or reviews	<ul style="list-style-type: none"> <li>The results of any audits or reviews of sampling techniques and data.</li> </ul>	<ul style="list-style-type: none"> <li>No audits or reviews have been completed given the early stage of the project</li> </ul>

## Section 2 Reporting of Exploration Results

(Criteria listed in the preceding section also apply to this section.)

Criteria	JORC Code explanation	Commentary
<i>Mineral tenement and land tenure status</i>	<ul style="list-style-type: none"> <li>Type, reference name/number, location and ownership including agreements or material issues with third parties such as joint ventures, partnerships, overriding royalties, native title interests, historical sites, wilderness or national park and environmental settings.</li> <li>The security of the tenure held at the time of reporting along with any known impediments to obtaining a licence to operate in the area.</li> </ul>	<ul style="list-style-type: none"> <li>Tenements E59/2223, E59/2238 and E59/2258</li> <li>Held by Gunex Pty Ltd, a 100% owned subsidiary of Altilium Metals Pty Ltd, which in turn is a 100% owned subsidiary of Aldoro Resources Limited</li> <li>GSR to original tenement holder</li> <li>The tenements are in good standing, with no native title interests and no known historical or environmentally sensitive areas with the tenement areas</li> </ul>
<i>Exploration done by other parties</i>	<ul style="list-style-type: none"> <li>Acknowledgment and appraisal of exploration by other parties.</li> </ul>	<ul style="list-style-type: none"> <li>Previous relevant exploration was undertaken by: Westralian Nickel-INCO (1960s-70s)</li> <li>BHP-Hunter Resources (1985-90)</li> <li>Wedgetail Resources (2001)</li> <li>Apex Minerals-Mark Creasy (2001-06) Falconbridge-Apex-Mark Creasy (2002-03)</li> <li>Maximus Resources (2005-14)</li> </ul>
<i>Geology</i>	<ul style="list-style-type: none"> <li>Deposit type, geological setting and style of mineralisation.</li> </ul>	<ul style="list-style-type: none"> <li>The Narndee Project is located within the Youanmi Terrane of the Yilgarn Craton, close to a major structural boundary between the Murchison and Southern Cross Domains. The regional geology is dominated by Archaean granite-greenstone terranes (greenstone 2.8-3.0 billion years, granites 2.6-2.95 billion years) and the Windimurra Group of layered mafic intrusions (2.847 billion +/- 71 million years). These bodies represent the largest layered mafic-ultramafic intrusive complex in Australia. The Narndee Igneous Complex forms the primary component of the Boodanoo Suite and is divided into three broad units of stratigraphy: Ultramafic Zone, Lower Zone and Main Zone. Historical exploration has generally focused on stratiform PGE-reef mineralisation, whereas Aldoro's focus will be on massive magmatic nickel sulphide deposits</li> </ul>
<i>Drill hole Information</i>	<ul style="list-style-type: none"> <li>A summary of all information material to the understanding of the exploration results including a tabulation of the following information for all Material drill holes: <ul style="list-style-type: none"> <li>easting and northing of the drill hole collar</li> </ul> </li> </ul>	<ul style="list-style-type: none"> <li>A listing of the historic Maximus Resources drill hole information material to the understanding of the historical exploration results, along with other historical drilling, is provided in the body and appendices of the ASX announcement on October 29 2020.</li> </ul>



Criteria	JORC Code explanation	Commentary
	<ul style="list-style-type: none"> <li>○ <i>elevation or RL (Reduced Level – elevation above sea level in metres) of the drill hole collar</i></li> <li>○ <i>dip and azimuth of the hole</i></li> <li>○ <i>down hole length and interception depth</i></li> <li>○ <i>hole length.</i></li> <li>● <i>If the exclusion of this information is justified on the basis that the information is not Material and this exclusion does not detract from the understanding of the report, the Competent Person should clearly explain why this is the case.</i></li> </ul>	<ul style="list-style-type: none"> <li>● Historical drilling by previous explorers used best practices for that time</li> <li>● The relevant details for Aldoro's drilling are contained in the body of this announcement</li> <li>● The use of any data is recommended for indicative purposes only in terms of potential Ni- Cu-PGE mineralisation and for developing exploration targets</li> </ul>
<i>Data aggregation methods</i>	<ul style="list-style-type: none"> <li>● <i>In reporting Exploration Results, weighting averaging techniques, maximum and/or minimum grade truncations (eg cutting of high grades) and cut-off grades are usually Material and should be stated.</i></li> <li>● <i>Where aggregate intercepts incorporate short lengths of high grade results and longer lengths of low grade results, the procedure used for such aggregation should be stated and some typical examples of such aggregations should be shown in detail.</i></li> <li>● <i>The assumptions used for any reporting of metal equivalent values should be clearly stated.</i></li> </ul>	<ul style="list-style-type: none"> <li>● Aldoro results are presented on a length weighted average</li> <li>● No metal equivalent values have or will ever be quoted by Aldoro</li> </ul>
<i>Relationship between mineralisation widths and intercept lengths</i>	<ul style="list-style-type: none"> <li>● <i>These relationships are particularly important in the reporting of Exploration Results.</i></li> <li>● <i>If the geometry of the mineralisation with respect to the drill hole angle is known, its nature should be reported.</i></li> <li>● <i>If it is not known and only the down hole lengths are reported, there should be a clear statement to this effect (eg 'down hole length, true width not known').</i></li> </ul>	<ul style="list-style-type: none"> <li>● All results referenced are based on down-hole lengths and may not reflect the true width of mineralisation or thickness of host lithologies, which is unknown</li> </ul>
<i>Diagrams</i>	<ul style="list-style-type: none"> <li>● <i>Appropriate maps and sections (with scales) and tabulations of intercepts should be included for any significant discovery being reported These should include, but not be limited to a plan view of drill hole collar locations and appropriate sectional views.</i></li> </ul>	<ul style="list-style-type: none"> <li>● Appropriate maps and tabulations are presented in the body of the announcement</li> </ul>
<i>Balanced reporting</i>	<ul style="list-style-type: none"> <li>● <i>Where comprehensive reporting of all Exploration Results is not practicable, representative reporting of both low and high grades and/or widths should be practiced to avoid misleading reporting of Exploration Results.</i></li> </ul>	<ul style="list-style-type: none"> <li>● Peak values have been reported, but average values have also been reported</li> <li>● Only selected drill intersections have been mentioned, and due to the nature of the drilling and lack of adequate records and survey control,</li> </ul>

Criteria	JORC Code explanation	Commentary
		they are considered indicative only and not material for historical drilling
<i>Other substantive exploration data</i>	<ul style="list-style-type: none"> <li><i>Other exploration data, if meaningful and material, should be reported including (but not limited to): geological observations; geophysical survey results; geochemical survey results; bulk samples – size and method of treatment; metallurgical test results; bulk density, groundwater, geotechnical and rock characteristics; potential deleterious or contaminating substances.</i></li> </ul>	<ul style="list-style-type: none"> <li>Falconbridge completed an airborne magnetic and radiometric survey over the NIC using a fixed-wing aircraft and Scintrex Cesium Vapour CS-2 Magnetometer and Exploranium GR 820 Spectrometer. Lines were flown E-W at 100m spacing and 35m sensor height. This survey was reprocessed by Southern Geoscience.</li> <li>Aldoro conducted its own VTEM™ Max airborne survey (refer to details in Table 1 ASX Announcement January 20 2021).</li> <li>Aeromagnetic and gravity datasets, geochemistry datasets ground, EM surveys, and DHTM surveys have been used to target drilling</li> <li>GEM Geophysics completed downhole EM surveying <ul style="list-style-type: none"> <li>□ Loop Size: 300mx300m, double turn</li> <li>□ Station Spacing: 2-10m intervals</li> <li>□ Sensor: B-field DigiAtlantis</li> <li>□ Base/frequency: 0.125Hz</li> <li>□ Stacking: ~32-64 stacks, 2-3 repeatable readings</li> </ul> </li> </ul>
<i>Further work</i>	<ul style="list-style-type: none"> <li><i>The nature and scale of planned further work (eg tests for lateral extensions or depth extensions or large-scale step-out drilling).</i></li> <li><i>Diagrams clearly highlighting the areas of possible extensions, including the main geological interpretations and future drilling areas, provided this information is not commercially sensitive.</i></li> </ul>	<ul style="list-style-type: none"> <li>Short term future work plans are detailed in the body of this announcement</li> <li>Infill and step-out drilling is underway at VC1, with relevant diagrams included in the body of this release</li> <li>Exploration is at an early stage, and longer-term future work will depend on results</li> </ul>