



12 January 2022

ASX Announcement

## Airborne EM Survey Completed at Ravensthorpe Nickel Project

### Key Highlights

- The 2022 exploration programme at the 100% owned Ravensthorpe Nickel Project began immediately following successful listing on the ASX in late December 2021
- A high resolution helicopter-borne electromagnetic (EM) and magnetic survey over the entire 62km<sup>2</sup> Ravensthorpe Nickel Project has been completed
- A total of 522 line kilometers of data were acquired using line spacings of 100m
- Processing of information and results due in coming weeks

Western Australian nickel sulphide explorer, **DMC Mining Limited (ASX: DMM) (DMC or the Company)** is pleased to announce the completion of a high-resolution helicopter-borne time domain electromagnetic (EM) and magnetic (Xcite™) survey covering all the Ravensthorpe Nickel Project (**RNP or the Project**).

**DMC's Executive Chairman, David Sumich, commented:**

*"This is an excellent start to our 2022 exploration programme, and we intend to maintain the momentum throughout 2022. The survey commenced a few days after DMC listed on the ASX and we are extremely pleased to have been able to complete this survey over the holiday period. We look forward to updating the market further."*

**DMC Mining Limited**

**Phone:** +61 (08) 63164674

**Address:** 27/44 St Georges Tce, Perth WA 6000.

**Email:** [info@dmcmining.com](mailto:info@dmcmining.com)

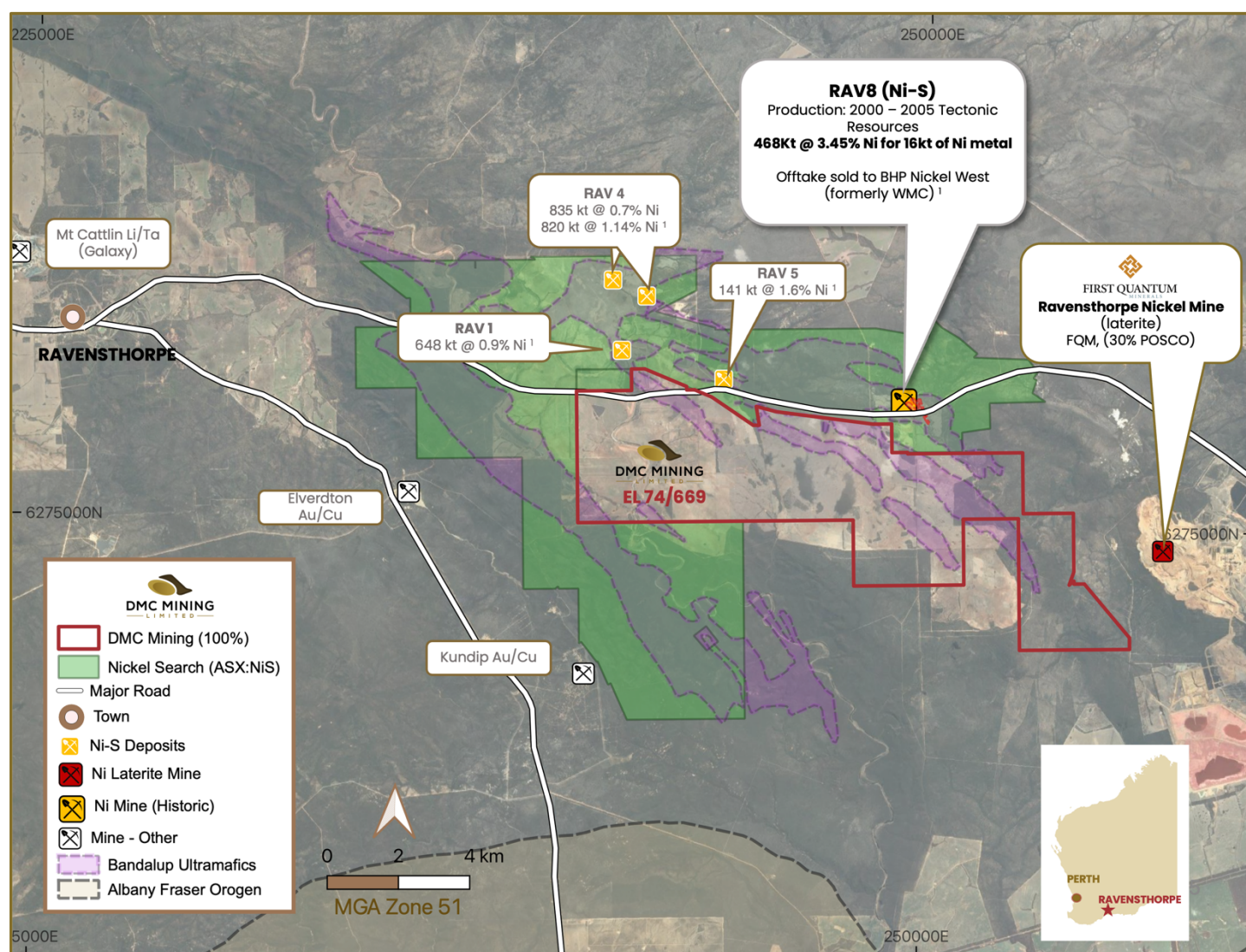
**Web:** [www.dmcmining.com.au](http://www.dmcmining.com.au)



**Figure 1 – Squirrel helicopter with NRG’s Xcite electromagnetic system on site at Ravensthorpe (January 2022)**

The DMC exploration programme has “hit the ground running” at its 100% owned Ravensthorpe Nickel Project in Western Australia. A total of 522-line kms of data at 100m line spacing was acquired.

The survey was completed by NRG Australia, and for the data processing and interpretation, DMC has engaged Resource Potentials Pty Ltd.



**Figure 2 – Ravensthorpe Nickel Project – Regional Map**

<sup>1</sup> Australasian Mining Ltd. Annual Report. WAMEX

### Ravensthorpe Nickel Project

The Ravensthorpe Nickel Project (DMC 100%, EL 74/669) is located in a highly prospective geological setting for nickel sulphide deposits. The Project has approximately **15km strike length of the Bandalup ultramafics**, the target host rocks that are prospective for Kambalda-style komatiitic nickel sulphide deposits.

The project is very well serviced by roads, power, and other necessary mining infrastructure.

### Next Steps

Data processing, modelling, and targeting studies are underway, involving the integration of the new airborne EM data with available historical geophysical, geological and geochemical information.

Approved for release by the Board of Directors

For further information, please contact:

#### David Sumich

Executive Chairman

- +61 (08) 63164674
- 27/44 St Georges Tce, Perth WA 6000.
- info@dmcmMining.com.au

#### Eliza Gee

Investor Relations

- 0432 166 431
- eliza@asxinvestor.com.au

#### Follow us



## About DMC MINING LIMITED (ASX:DMM)

DMC Mining is a **dedicated nickel sulphide explorer in Western Australia**. The large tenement holding (**~940km<sup>2</sup>**) throughout the Fraser Range and at Ravensthorpe, located at the **margins of the Yilgarn Craton** where numerous world class deposits have been discovered.

Although an explorer, DMC provide investors with excellent exposure to the **growing demand for EV batteries**.

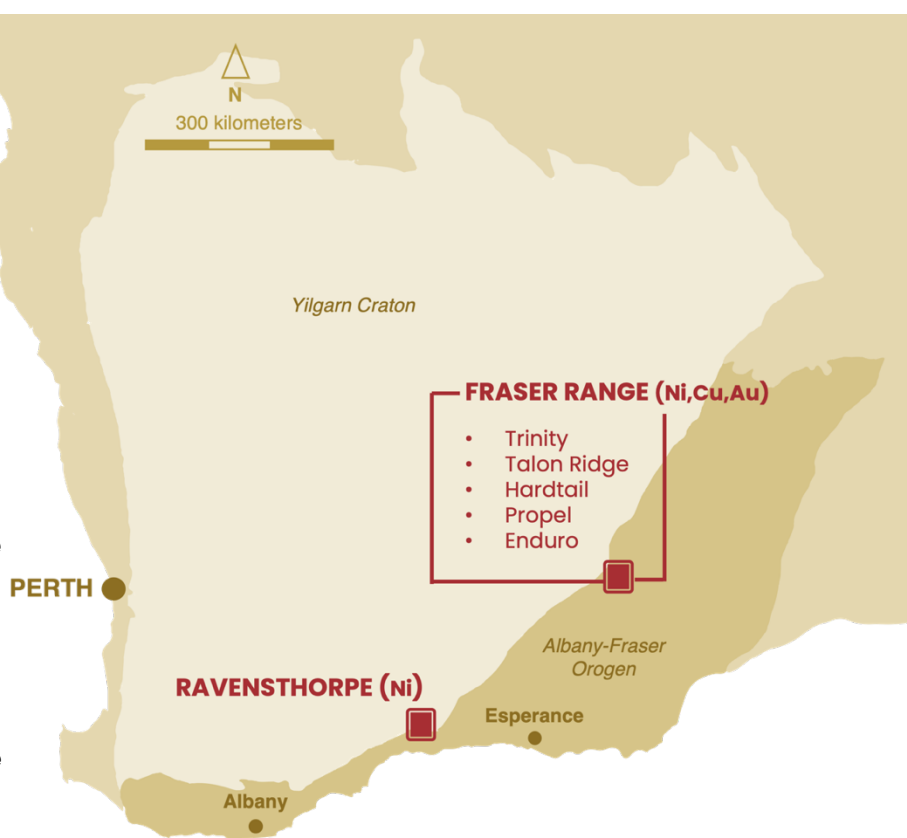
Debuted on the ASX in late 2021, the company is focused on delivering on its exploration programmes and providing tangible results for investors. Our modern approach to nickel exploration will result in a more streamlined and cost-efficient exploration process that will ultimately deliver higher returns for investors.

### Trinity Project (Fraser Range)

- 6 high priority targets
- ~15km west of Nova Nickel Mine (ASX:IGO)

### Ravensthorpe Nickel Project

- Highly prospective nickel sulphide setting
- 15km of bandalup ultramafics
- EM survey completed





## **Directors & Management**

### **David Sumich**

Executive Chairman

### **William (Bill) Witham**

Non Executive Director

### **Bruce Franzen**

Non Executive Director

### **CSA Global**

Consulting Exploration Manager

### **A.C.N**

648 372 516

### **Shares on Issue**

46.35 mill

### **Options** (\$0.30 exp Dec 2024 )

1.0 mill