



**Resolute**

**2021 - Africa Down Under Presentation**

1 September 2021



# Important notices and disclaimers



This presentation contains information about Resolute Mining Limited (Resolute or the Company) and its activities that is current as at the date of this presentation unless otherwise stated. The information in this presentation remains subject to change without notice. This presentation has been prepared by Resolute and no party other than Resolute has authorised or caused the issue, lodgement, submission, despatch or provision of this presentation.

**All dollar values are in United States dollars (\$) unless otherwise stated.**

The information in this presentation is general in nature and does not purport to be complete. This presentation is not a prospectus, disclosure document or other offering document under Australian law or under the laws of any other jurisdiction. This presentation is provided for information purposes and does not constitute an offer, invitation, inducement or recommendation to subscribe for or purchase securities in Resolute in any jurisdiction.

The information contained in this presentation has been prepared in good faith by Resolute, however no guarantee, representation or warranty expressed or implied is or will be made by any person (including Resolute and its affiliates and their directors, officers, employees, associates, advisers and agents) as to the accuracy, reliability, correctness, completeness or adequacy of any statements, estimates, options, conclusions or other information contained in this presentation.

To the maximum extent permitted by law, Resolute and its affiliates and their directors, officers, employees, associates, advisers and agents each expressly disclaims any and all liability, including, without limitation, any liability arising out of fault or negligence, for any loss or damage suffered by any person relating in any way to the use of or reliance on information contained in this presentation including, without limitation:

- from representations or warranties or in relation to the accuracy or completeness of the information contained within this presentation;
- from statements, opinions, forecasts, reports or other matters, express or implied, contained in, arising out of or derived from this presentation; or
- for omissions from this presentation including, without limitation, any financial information, any estimates, forecasts, or projections and any other financial information derived therefrom.

This presentation does not constitute financial product advice, investment, legal, taxation or other advice and is not intended to be used or relied upon as the basis for making an investment decision. This presentation is not a recommendation to acquire Resolute securities and has been prepared without taking into account the investment objectives, taxation situation, financial situation or needs of individuals. Before making any investment decision in connection with any acquisition of Resolute securities, prospective investors should consider the appropriateness of the information having regard to their own objectives, tax situation, financial situation and needs and seek financial, legal and taxation advice appropriate to their jurisdiction.

Past performance information given in this presentation is for illustrative purposes only and should not be relied upon as an indication of future performance. This presentation includes certain forward-looking statements, including statements regarding our intent, belief or current expectations with respect to Resolute's business and operations, market conditions, results of operations and financial condition, and risk-management practices. Words such as 'project', 'foresee', 'plan', 'expect', 'aim', 'intend', 'anticipate', 'believe', 'estimate', 'may', 'should', 'will' and similar expressions are intended to identify forward-looking statements. Indications of, and guidance on, future earnings and financial position and performance are also forward-looking statements. Forward-looking statements are provided as a general guide only and should not be relied upon as an indication or guarantee of future performance. These statements are based upon a number of estimates and assumptions that, while considered reasonable by Resolute, are inherently subject to significant uncertainties and contingencies, many of which are outside the control of Resolute, involve known and unknown risks and uncertainties that could cause actual events or results to differ materially from estimated or anticipated events or results reflected in such forward looking statements on certain assumptions, which may prove to be incorrect. Actual results, performance, actions and developments of Resolute may differ materially from those expressed or implied by the forward-looking statements in this presentation.

As an Australian company listed on the Australian Securities Exchange (ASX), Resolute is required to report Ore Reserves and Mineral Resources in Australia in accordance with the Australasian Code for Reporting of Exploration Results, Mineral Resources and Ore Reserves (JORC Code). Recipients should note that while Resolute's Mineral Resource and Ore Reserve estimates comply with the JORC Code, they may not comply with relevant guidelines in other countries.

For details of the Mineral Resources and Ore Reserves used in this presentation, please refer to ASX Announcements dated 17 February 2021 titled "Annual Ore Reserve and Mineral Resource Statement" and 7 April 2021 titled "Resolute and Syama Life of

Mine update". The Company is not aware of any new information or data that materially affects the Mineral Resources and Ore Reserves as reported in those ASX Announcements and confirms that all material assumptions and technical parameters underpinning the estimates in those ASX Announcements continue to apply and have not materially changed. The form and context in which the Competent Persons' findings are presented have not been materially modified from those ASX Announcements.

All in Sustaining Cost (AISC) per ounce of gold produced are calculated in accordance with World Gold Council guidelines. These measures are included to assist investors to better understand the performance of the business. Cash cost per ounce of gold produced and AISC are non-International Financial Reporting Standards financial information.

An investment in Resolute is subject to known and unknown risks, some of which are beyond the control of Resolute, including possible loss of income and principal invested. Resolute does not guarantee any particular rate of return or the performance of Resolute, nor does it guarantee any particular tax treatment. Investors should have regard (amongst other things) to the risk factors outlined in this Presentation when making their investment decision. See the "Key Risks" section of this presentation for certain risks relating to an investment in Resolute.

This presentation includes pro-forma financial information which is provided for illustrative purposes only and is not represented as being indicative of Resolute (or anyone else's) views on Resolute's future financial position or performance.

A number of figures, amounts, percentages, estimates, calculations of value and fractions in this presentation are subject to the effect of rounding. Accordingly, the actual calculation of these figures may differ from the figures set out in this presentation.

Resolute's revised production guidance for 2021 is 315,000oz to 340,000oz at \$1,290/oz to \$1,365/oz. Resolute does however continue to assess developments and update the Company's response to COVID-19 while placing the highest priority on the safety and wellbeing of its employees, contractors and stakeholders. Further escalation of COVID-19 (including its variant forms), and the implementation of further government-regulated restrictions or extended periods of supply chain disruption, has the potential to negatively impact gold production, earnings, cash flow and the Company's balance sheet.

This presentation has been authorised for release Managing Director and CEO, Mr Stuart Gale.

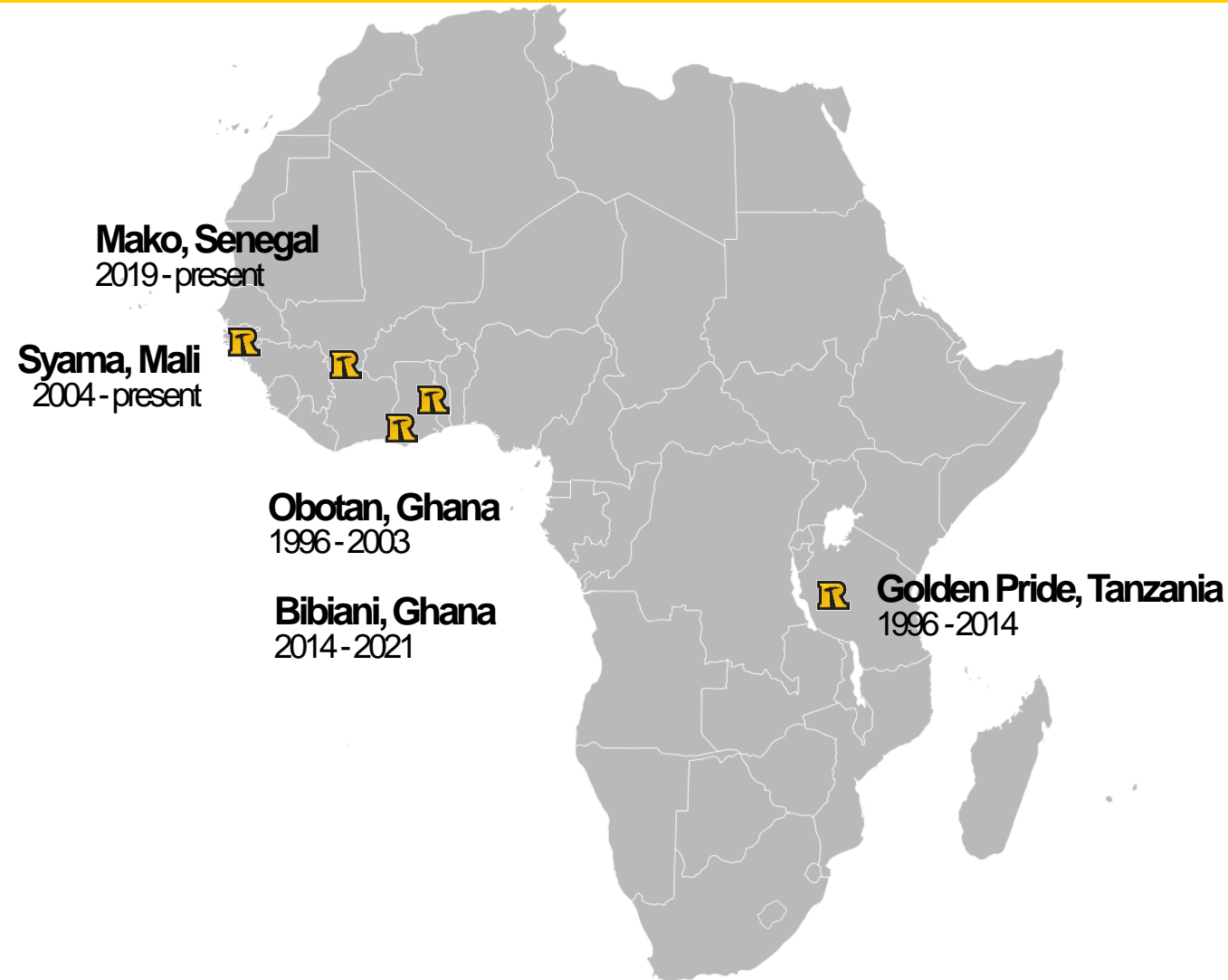
# Operational history in Africa

*Successful history of development and contribution to economy*



**Resolute**

- Resolute commenced operations Africa in 1996
- 5.5 million ounces produced from Africa
- Total capital, royalties and taxes of ~\$3.0 billion
- Indirect investments in Cote D'Ivoire, Democratic Republic of Congo, Guinea and Sudan
- In country offices supporting mine sites



# Year in review

*Reflecting on the last 12 months*



**Resolute**

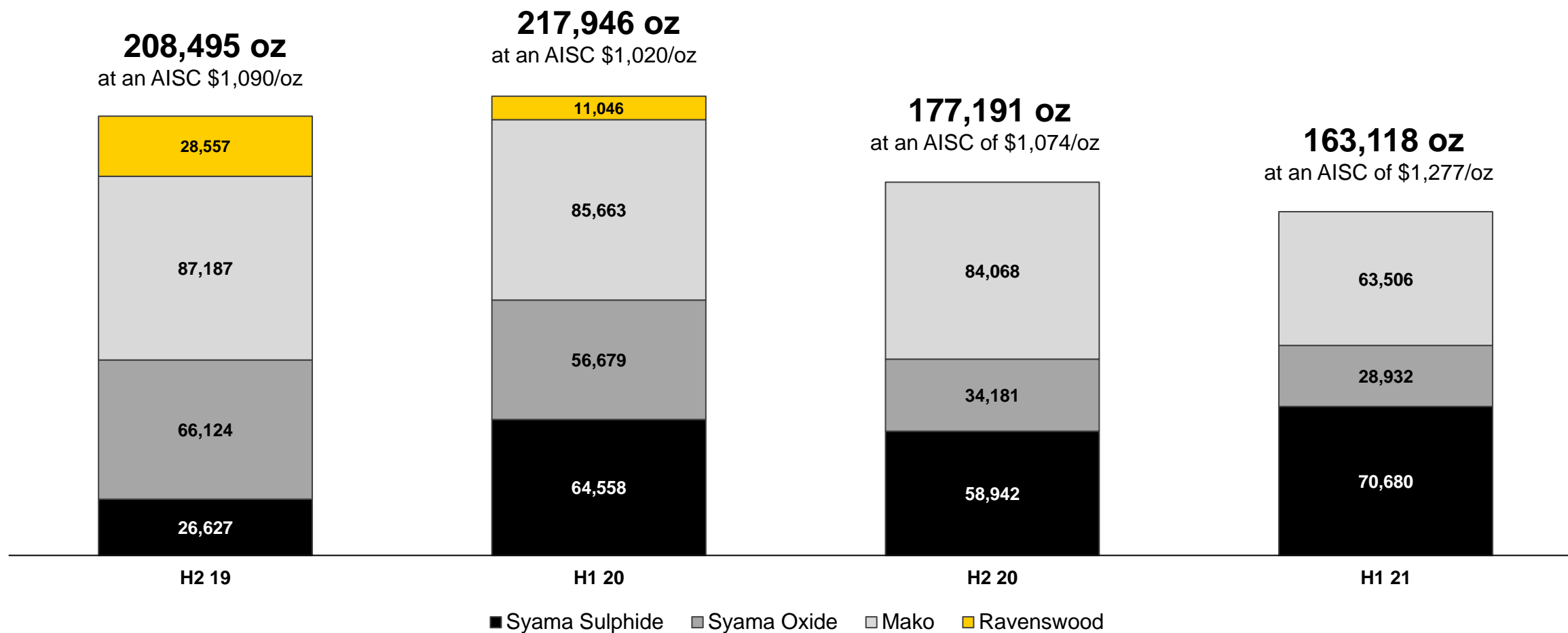
- Key Board, executive and management appointments
- Syama underground mining, processing and roaster throughput at highest levels
- Mako continuing to achieve targets
- Implementation of productivity and efficiency initiatives
- Tabakoroni underground resource update
- Debt repayments of \$29.7m including \$20.0m voluntary debt repayment completed ahead of schedule
- Bibiani sale complete for \$90m





# Multi asset production base

*H1 21 average realised price \$1,733/oz; Syama Sulphide contribution increasing; Mako cutback on track*





# Key metrics

*H1 21 operations and financial summary*



**Resolute**

**Revenue**  
**\$261m**

**Gold sold**  
**152koz**

**EBITDA**  
**\$78m**

**Operating  
cash flow**  
**\$69m**

**Net loss after tax**  
**\$220m**

---

**Reserves<sup>1</sup>**  
**4.0Moz**

**Resources<sup>1</sup>**  
**8.5Moz**



1. Excludes Bibiani reserves (660koz) and resources (2.5Moz)



# Strengthening balance sheet and hedge book

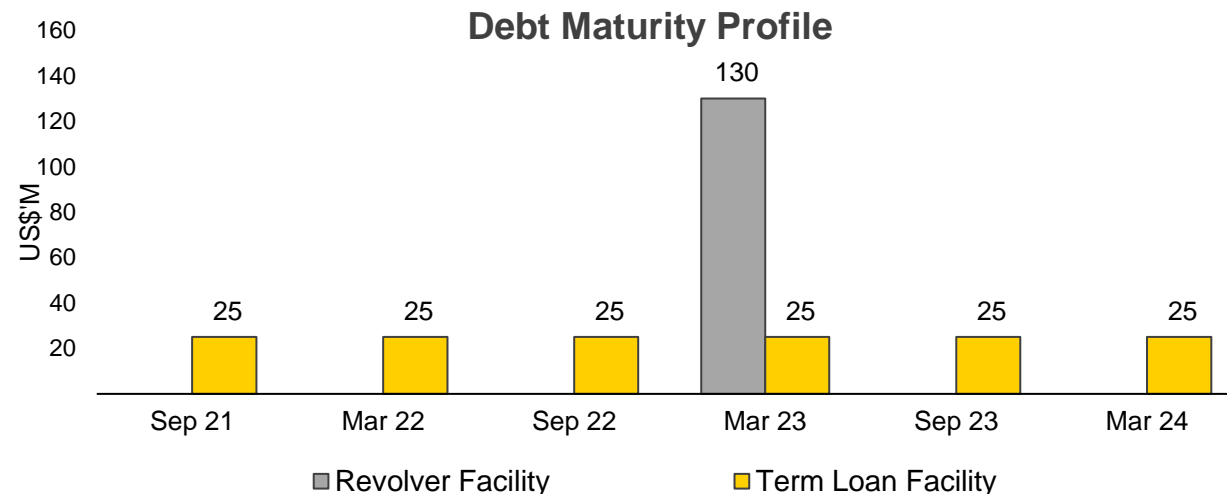
Focus on disciplined capital management and balance sheet simplification



Resolute

## Balance sheet improvement

- \$29.7m in debt repayments including \$20m voluntary debt repayment on Revolving Credit Facility
- \$20m capacity on \$150m Revolving Facility
- \$150m Term Loan Facility amortising at \$25m starting September 2021
- Prioritise free cashflow to repayment of debt
- Mali overdraft facilities offering short term liquidity



## Gold hedging (at 30 June 21):

	Forward Sales	
	Forward Price (\$/oz)	Delivery (oz)
Sept 2021 Quarter	1,716	58,000
Dec 2021 Quarter	1,730	30,000
Total	1,721	88,000

65,000oz of zero cost collars added in 2021 comprising:

- Put options averaging \$1,669/oz
- Call options averaging \$2,119/oz

## Balance sheet upside

- **\$30m initial cash proceeds** from sale of Bibiani to be applied to voluntary debt repayment. Remaining proceeds from sale of **\$60m to be received in the next 12 months**
- Ravenswood sale proceeds **up to A\$250m** available from March 2024

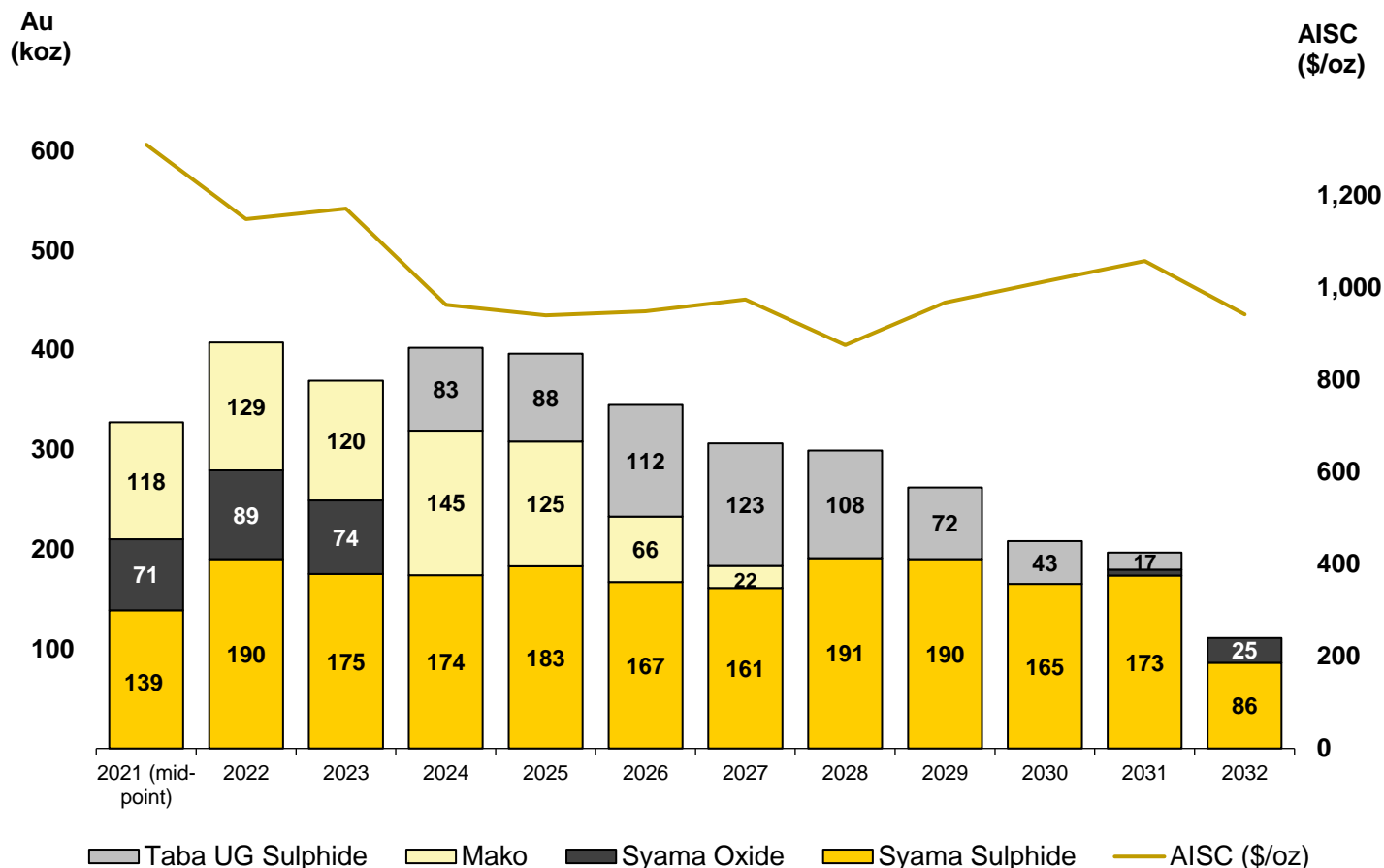


# Resolute long life gold producer

*Significant potential for expansion of resource base and near mine upside*



- Syama Life of Mine (LOM) updated:
  - 250koz - 300koz per annum
  - Average All-In Sustaining Cost (AISC) of ~\$1,000/oz to 2029
- Oxide production to 2023 ~80koz per annum
- Total Syama production of 2.9Moz over current 11-year mine life
- Tabakoroni Underground to commence when open pit oxide production finishes in 2024
- Focus on identifying further extension and development opportunities at Mako in Senegal, beyond the current Mako LOM
- Significant exploration potential remains at Syama



# Key initiatives

*Production and processing focus*



Resolute

## Systems

- Implementation of key systems and process which support improved consistency, production and cost reduction
- **Management operating system** development and adoption across Syama
- **On-Stream Analyser** implementation - process control and roaster feed grades
- Installation of **cleaner cells on the Sulphide** processing system
- Installation of mill optimisation software, including a **Mill Slicer**, at Mako to increase throughput

## Projects

Improve efficiency and cost reduction including:

- Syama **power station** has been fully commissioned during June quarter
- **Roaster refurbishment** – providing improved throughput and recoveries
- Conversion of contractors to employees for the underground development and mobile maintenance

## People

Continue to build our teams:

- Board **renewal**, **appoint** of key executives and site based operational managers
- Support and **training** of managers and supervisors to deliver production and cost improvements







Mali



# Syama Gold Mine

*Long life asset with significant gold resource endowment and exploration potential*



**Resolute**

Mineral Resources

**7.6Moz**

Ore Reserves

**3.3Moz**

LOM AISC

**US\$1,000/oz**

Employment

**705 direct**

**1,754 contractors**

Current Mine Life

**11 years**

Plant Capacity

**Oxide 1.5Mtpa**  
**Sulphide 2.4Mtpa**

Target Site Production

**250-300koz pa**

Investment in capex, tax,  
royalties

**~US\$1.4 billion**





# Syama operations highlights

*Improved operating performance with record throughputs and material movement*

- **Syama Sulphide performs at record levels in Q21:**

- Total tonnes mined of 700,368t
- Sulphide throughput in 557,755t
- Record roaster throughput of 43,324t
- Production during H1 21 of 70,680oz

- **Syama Oxide in Q2 21**

- Record tonnes processed of 413,041t
- Recommenced mining at Tabakoroni

- **Focus on grade and implementation of efficiency initiatives**





# Syama hybrid modular power station

*A sustainable solution with long term benefits*



**Resolute**

- Commissioned three modular 10MW power blocks
- 10MW battery storage system
- Construction of the Bulk Fuel Storage Facility has been completed, with 4 million litres capacity
- Reducing carbon emissions by approximately 20%
- Targeting cost savings of 40%





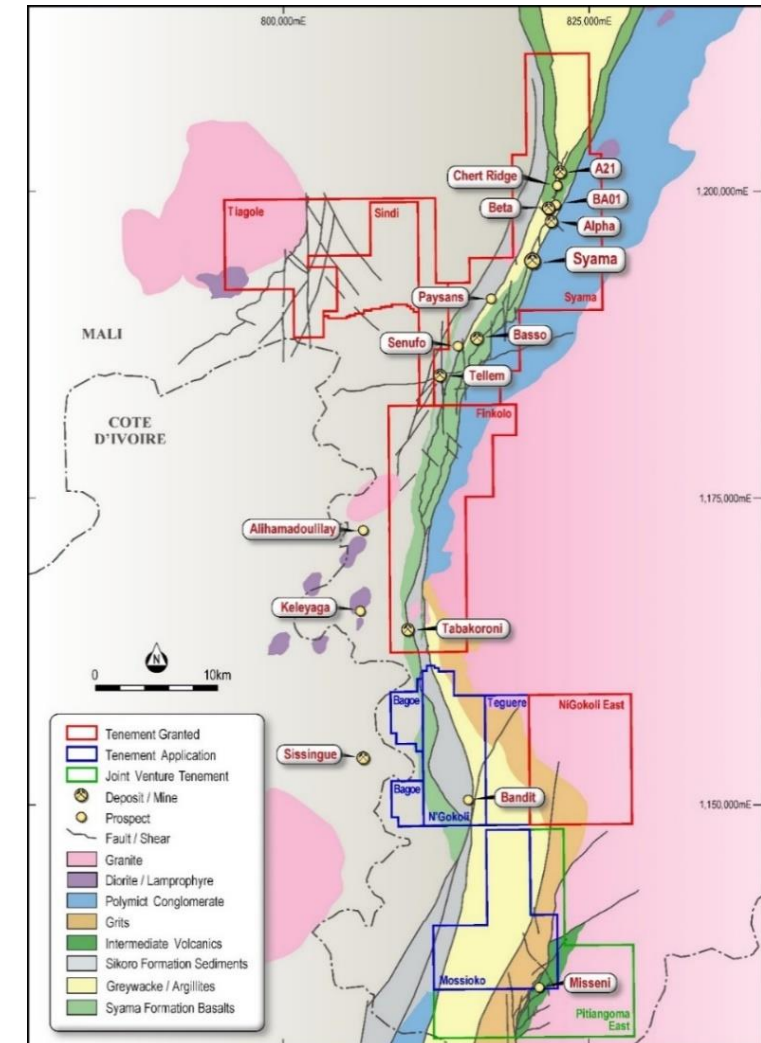
# Syama Greenstone Belt

*Control over 85km strike length of highly prospective region*



**Resolute**

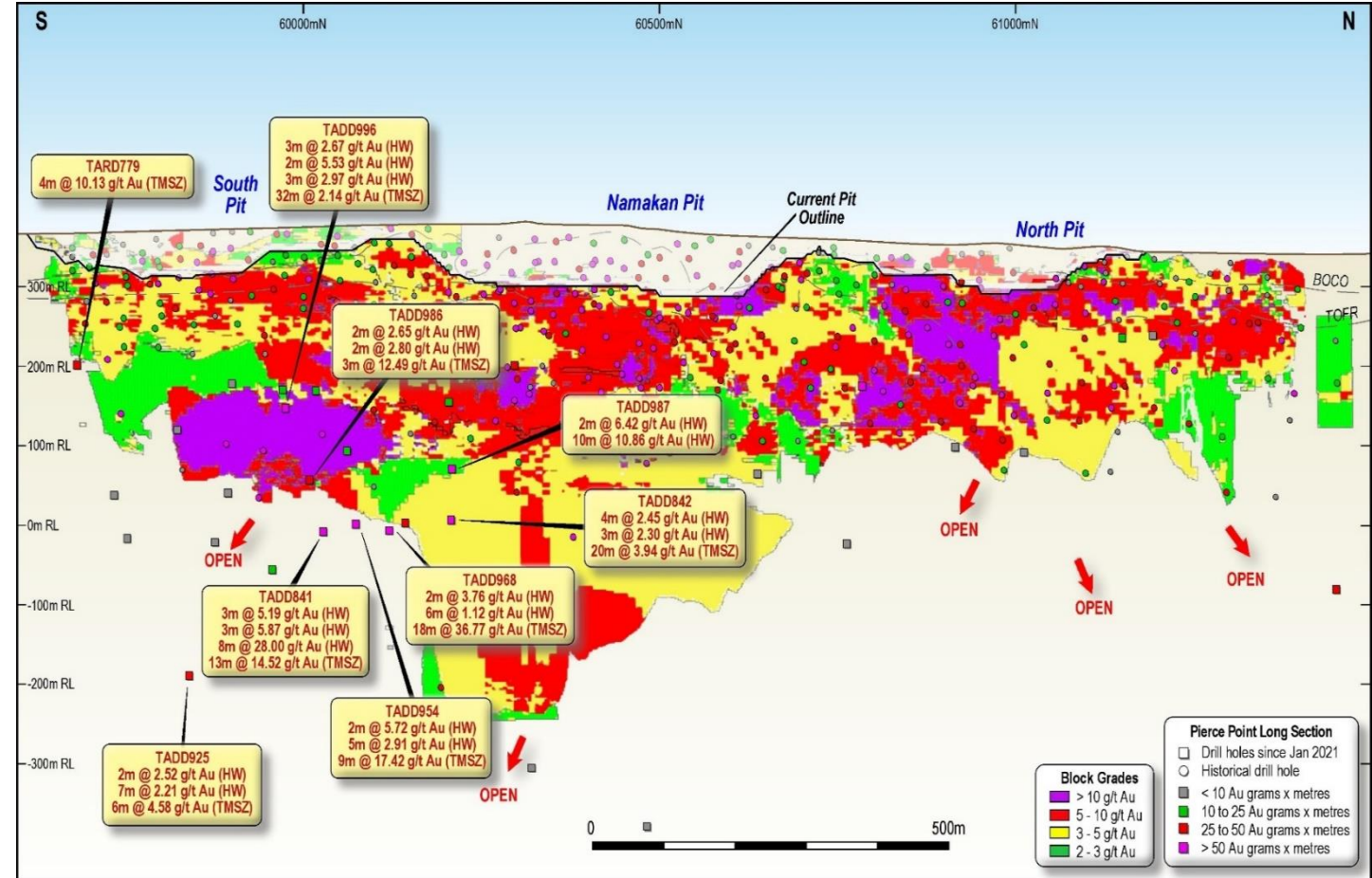
- Total resources of 7.5Moz
- Large sulphide Mineral Resources and Ore Reserves
- Substantial unexplored sulphide potential
- Extension of oxide mine life
- Consider options for development of sulphide resources



# Outstanding Tabakoroni drill results

*Multiple, very-high grade intersections returned from positions outside the current resource model*

- High grade underground mineral resource
  - 8.1Mt @ 4.89g/t Au for 1.26Moz (Dec 2020)
  - UG Ore Reserves 430,000oz
  - UG Mining Inventory 700,000oz
- Drilling continues to expand the high-grade shoot underneath the South Pit
  - TADD841 – 13m @ 14.52g/t Au
  - TADD954 – 9m @ 17.42g/t Au
  - TADD968 – 18m @ 36.77g/t Au

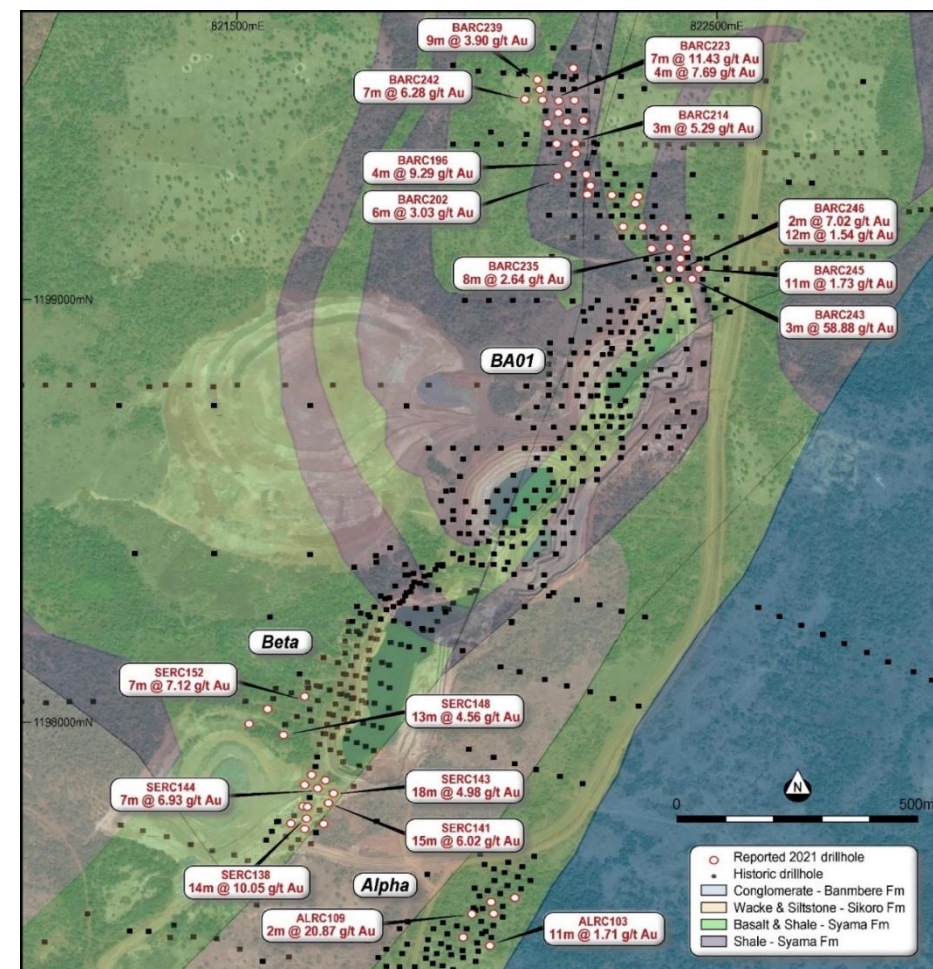




# Syama North - Oxide

*Positive results provide potential for oxide mine life extension*

- Extensive drilling throughout 2021 targeting oxide mineralisation adjacent to historic open pits
- Recently identified new zones of mineralisation
- Resources are not included in the current oxide LOM - expectation of additional years of oxide production
- Excellent recently announced intersections at Syama North
  - SERC138 - 14m @ 10.05g/t Au
  - SERC141 - 15m @ 6.02g/t Au
  - SERC143 - 18m @ 4.98g/t Au
  - BARC239 - 7m @ 11.43g/t Au
  - BARC243 - 3m @ 58.88g/t Au
- Syama North to recommence operations





Senegal



# Mako Gold Mine

*High margin open pit with near mine exploration optionality*



**Resolute**

Mineral Resources

**965koz**

Ore Reserves

**780koz**

LOM AISC

**US\$900/oz**

Employment

**307 direct**

**951 contractors**

Mine Life

**6 years**

Plant Capacity

**2.1Mtpa**

Target Site  
Production

**120-140koz pa**

Investment in capex,  
tax, royalties

**~US\$395m**





# Mako operations highlights

*Strong operating performance with record throughputs and mining performance*



**Resolute**

- Planned cutback well progressed, enabling access to higher grade ore
- Maintained good operational margin whilst undertaking cutback stripping campaign
- Continues to meet all operational targets
  - 63,506oz produced
  - 981,872t processed
  - AISC of \$1,064/oz in H1 21





# Exploration: Senegal

*Near mine exploration focus to support the capital investment in the operation*



**Resolute**

## Mako

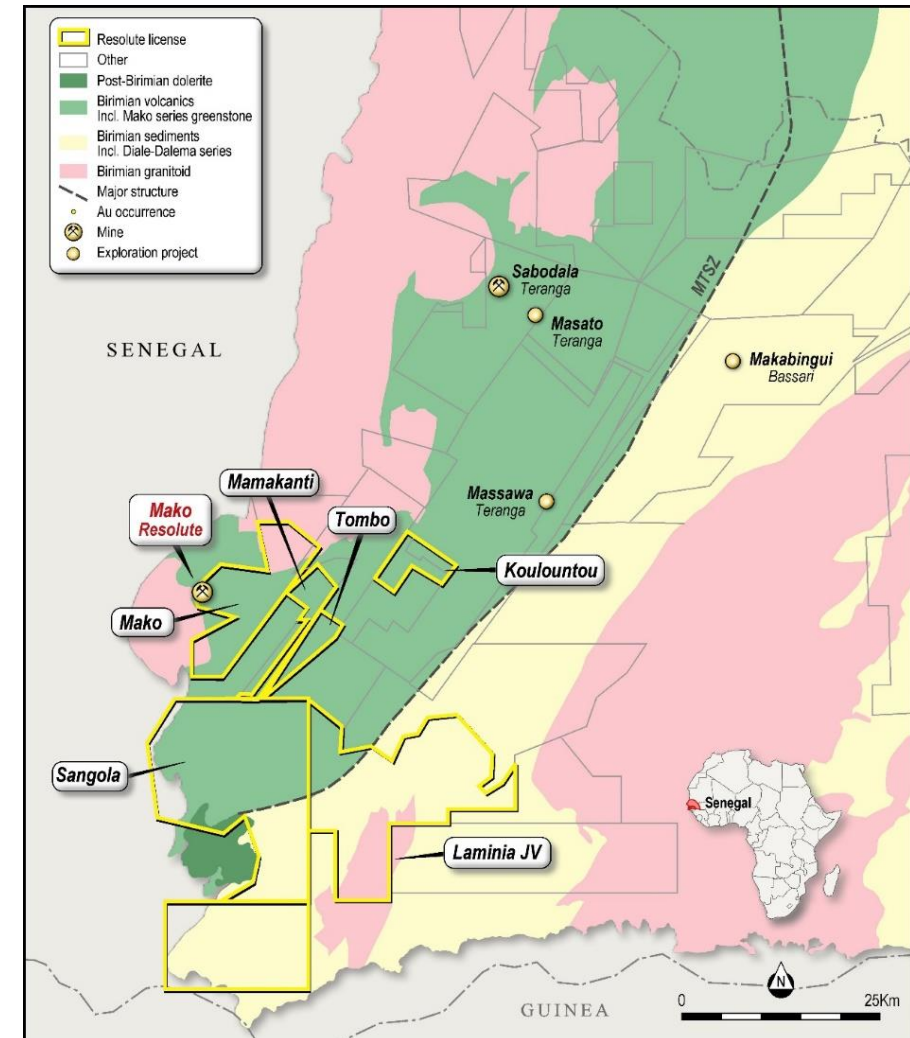
- Mako mine life extended to 2027
- Several near-mine targets on Mine Lease
- Mako NW target, soil anomaly parallel to Mako mine

## Mako Regional

- Increasing ground holdings adjacent to Mako operation
- New JVs at Mamakanti and Laminia
- New 100% owned permits at Sangola and Koulountou East
- Evaluating all permits within a 30km radius of Mako operation

## Tomboronkoto JV, Senegal

- Historic non-JORC resource of 300,000oz hosted in sheared granite
- Previous drilling by Randgold at the Tomboronkoto prospect
- Excellent potential for satellite mill feed – 15km SE of Mako
- Open along strike and down dip with artisanal mining over 2km strike







# Portfolio



# Exploration: Regional

*Early stage exploration projects in Guinea*



**Resolute**

## Kourouba JV

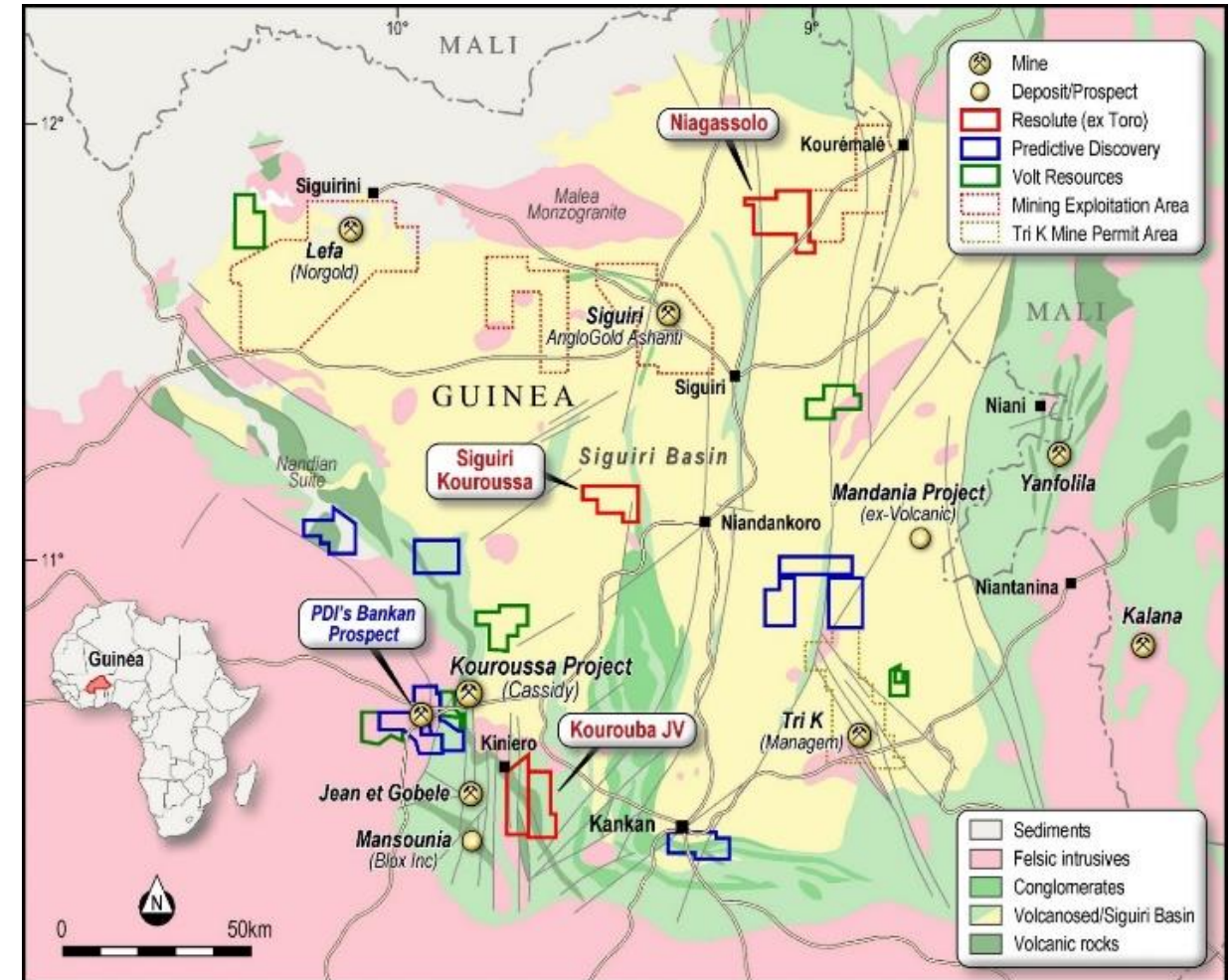
- 4km Au soil anomaly
- Extensive artisanal workings
- AC program just completed with encouraging results

## Niagassola

- Large untested Au soil anomaly
- Auger drilling underway

## Kouroussa

- Untested Au soil anomaly
- No drilling to date





# Strategic Investments in Africa

*Resolute's strategic investment portfolio comprises of the following West African based investments*

## Objective

Establish a portfolio of investments in emerging gold explorers to provide potential for medium term growth opportunities

## Focus

Equity investments in African focused explorers in highly prospective gold regions



**15%  
stake**

**Value:  
\$16.9 million**



**21%  
stake**

**Value:  
\$5.5 million**



**11%  
stake**

**Value:  
\$4.8 million**



**25%  
stake**

**Value:  
\$18.4 million**



# Portfolio Updates

## Bibiani Gold Mine

Resolute completed the sale of the Bibiani Gold Mine to Asante Gold Corporation (Asante) for total cash consideration of \$90 million

- \$30m cash received
- \$30m in six months from Completion
- \$30m in twelve months from Completion



## Ravenswood Gold Mine<sup>1</sup>

- A\$50m Promissory note receivable attracting 6% coupon payable at maturity
- A\$50m Promissory note receivable contingent on future gold prices and Ravenswood production
- A\$150m upside liquidity payment, linked to the investment outcomes of Ravenswood for the EMR Fund

1. Refer to announcement dated 15 January 2020 for detailed explanation of these amounts.





**Sustainability**



# Sustainability

*Operating responsibly across the communities in which we operate*



**Resolute**

## Health

- Over 1,100 employees and contractors vaccinated against COVID:19 in H1 21
- Zero COVID:19 operational disruptions

## Safety & Security

- Total Recordable Injury Frequency Rate of 1.24 at June 21
- Improved management of critical hazards, safe systems of work and training ongoing.
- MoU's established at Syama with local authorities and community stakeholders for improved security delivery

## Environment

- Security infrastructure in Niokolo Koba National Park in Senegal strengthened to benefit wildlife conservation outcomes
- Biodiversity and conservation efforts reflected in increased lion and chimpanzee activity at Mako

## Community

- \$2m of community development programs and contributions delivered YTD 21 in Mali and Senegal
- Education and health infrastructure contributions in local communities

## Compliance with Responsible Gold Mining Principles on target for mid 2023

## People & Governance

- Stability of employee relations through Unions
- 78% participation rate in recent engagement survey with 70% engagement score
- Up to 23 weeks paid parental leave introduced in Mali and Senegal





# Outlook

*Capitalise on strong foundation and existing investments*

- People, systems and processes
- Reliable delivery on production and costs
- Disciplined capital management to simplify balance sheet
- Unlock near mine exploration potential and value
- Committed to Responsible Gold Mining Principles







# Resolute

## Contact

Stuart Gale | Managing Director & CEO

EMAIL: [contact@rml.com.au](mailto:contact@rml.com.au)

PHONE: +61 8 9261 6100

## Follow Us



WEB | [www.rml.com.au](http://www.rml.com.au)