



QUEENSLAND  
PACIFIC METALS

## **Presentation**

Dr Stephen Grocott  
Managing Director & CEO

July 2021

ASX:QPM

[www.qpmetals.com.au](http://www.qpmetals.com.au)

***Re-energising Australia with critical  
battery metals production***

***Noosa Mining and  
Investment Conference***

# Disclaimer

The information in this presentation is an overview and does not contain all information necessary for investment decisions. In making investment decisions in connection with any acquisition of securities, investors should rely on their own examination and consult their own legal, business and/or financial advisers.

This document has been made available for information purposes only and does not constitute a prospectus, short form prospectus, profile statement or offer information statement. This document is not subject to the disclosure requirements affecting disclosure documents under Chapter 6D of the Corporations Act 2001 (Cth). The information in this document may not be complete and may be changed, modified or amended at any time by the Company, and is not intended to, and does not, constitute representations and warranties of the Company.

Queensland Pacific Metals Ltd does not have a significant operating history on which to base an evaluation of its business and prospects. Therefore, the information contained in this document is inherently speculative. Further, securities of companies such as the Company generally involve a higher degree of risk and are more volatility than securities of more established companies. Accordingly, an investment in the Company must be considered as speculative.

The information contained in this document has been prepared in good faith, neither the Company, Queensland Pacific Metals Ltd, or any of their respective directors, officers, agents, employees or advisors give any representation or warranty, express or implied, as to the fairness, accuracy, completeness or correctness of the information, opinions and conclusions contained in this document. Accordingly, to the maximum extent permitted by law, none of the Company, Queensland Pacific Metals Ltd, their respective directors, employees or agents, advisers, nor any other person accepts any liability whether direct or indirect, express or limited, contractual, tortious, statutory or otherwise, in respect of, the accuracy or completeness of the information or for any of the opinions contained in this document or for any errors, omissions or misstatements or for any loss, howsoever arising, from the use of this document.

This document may contain statements that may be deemed “forward looking statements”. Forward risks, uncertainties and other factors, many of which are outside the control of the Company can cause actual results to differ materially from such statements.

The Company makes no undertaking to update or revise such statements but has made every endeavour to ensure that they are fair and reasonable at the time of making this document. Investors are cautioned that any forward-looking statements are not guarantees of future performance and that actual results or developments may differ materially from those projected in any forward-looking statements made.

## Company

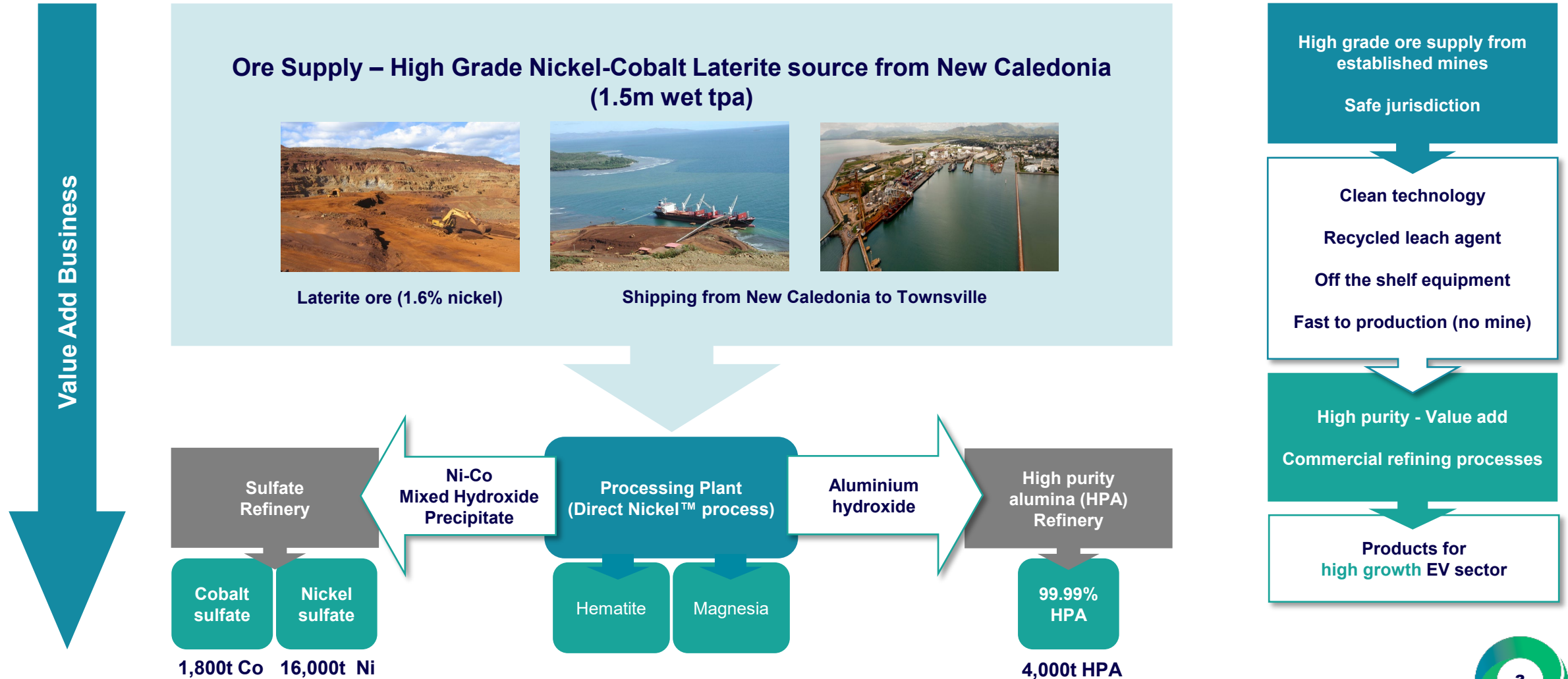


**Stephen Grocott**

**Managing Director & CEO**

[sgrocott@qpmetals.com.au](mailto:sgrocott@qpmetals.com.au)

# Townsville Energy Chemicals Hub – “TECH Project”



# World Class Partners



## Combined US\$15m equity investment

- \$0.1364 per share (16.8% premium to 1-month VWAP at time of transaction)
- LGES 7.5% shareholder
- POSCO 3.2% shareholder

## Binding offtake agreement signed

- 7 year term + 3 year first right of refusal after term expires
- 7,000tpa nickel / 700tpa cobalt LGES
- 3,000tpa nickel / 300tpa cobalt POSCO
- Pricing linked to commodity prices at time of sale

## Extensive due diligence undertaken

- Technical due diligence undertaken by RPM Global focusing on process, scalability, New Caledonia ore supply and approvals pathway

## *What does this mean for the TECH Project?*

- World class, bankable offtake partners secured will assist in financing
- Baseload customers – majority of nickel and cobalt production is now contracted
- Additional equity investment allows QPM to bring forward detailed engineering work in parallel with DFS
- Vote of confidence from two world class battery manufacturers

# World Class Partners



*“This is the most meaningful investment in our supply chain for LG Energy Solution since the company spun out from LG Chem. We believe the TECH Project will deliver sustainable nickel and cobalt production that is in line with LGES’ operating philosophy. And our proactive investments in the supply chain such as this will ultimately play a role in further satisfying our customers.”*



*“We are delighted to co-invest with LG Energy Solution in Queensland Pacific Metals. We look forward to building our relationship with QPM and assess other business opportunities that may arise between QPM and POSCO.”*

# Sustainable Nickel Production

## Global leader in lowest CO<sub>2</sub> emissions for nickel sulfate production

- 3.4kg CO<sub>2</sub> per kg nickel sulfate (NiSO<sub>4</sub>.6H<sub>2</sub>O, 22.3% Ni)
- Industry average from Nickel Institute data is 5.4kg CO<sub>2</sub> per kg nickel sulfate (≡ 24.2 kg CO<sub>2</sub>/kg Ni)
- 36% lower GHG intensity than industry average
- Emissions can be further reduced by using vented/flared gas from existing coal mines (CO<sub>2</sub> credit received)
- Nickel matte, which is derived from nickel pig iron, is not a clean source of nickel for nickel sulfate
- Refining nickel matte is complex and capital intensive – it only takes place at a few places in the world

	1kg Class 1 Ni (>99.8% Ni)	1 kg Ni in FeNi or Nickel Pig Iron (10 – 30% Ni)	1kg Ni metal in Ni Sulfate (4.48 kg Ni Sulfate) (22.3% Ni) <i>Nickel Institute*</i>	1kg Ni metal in Ni Sulfate (4.48 kg Ni Sulfate) (22.3% Ni) <i>Queensland Pacific Metals</i>
CO <sub>2</sub> eq emissions (kg)	13	45	24.2	15.2

\*No data provided by any Chinese producer

## No Tailings Dam

- All metals are leached into solution and nitric acid is recycled
- Residue is inert silicate
- James Cook University investigating potential to utilise residue in commercial opportunities such as engineered landfill



Vale TSF failure - Bento Rodrigues

# Products



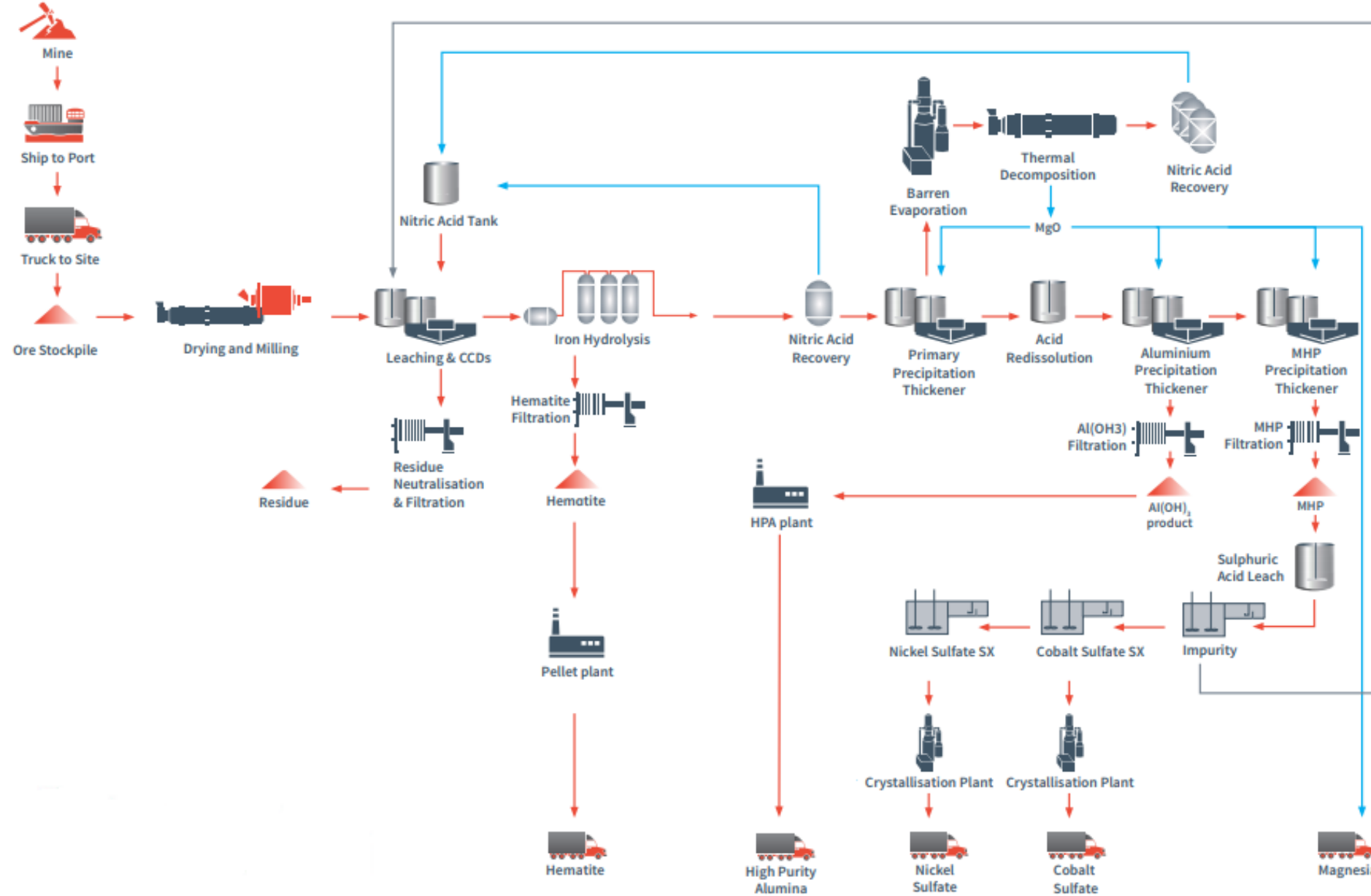
Nickel Laterite Ore  
(crushed and dried)

Ni-Co MHP

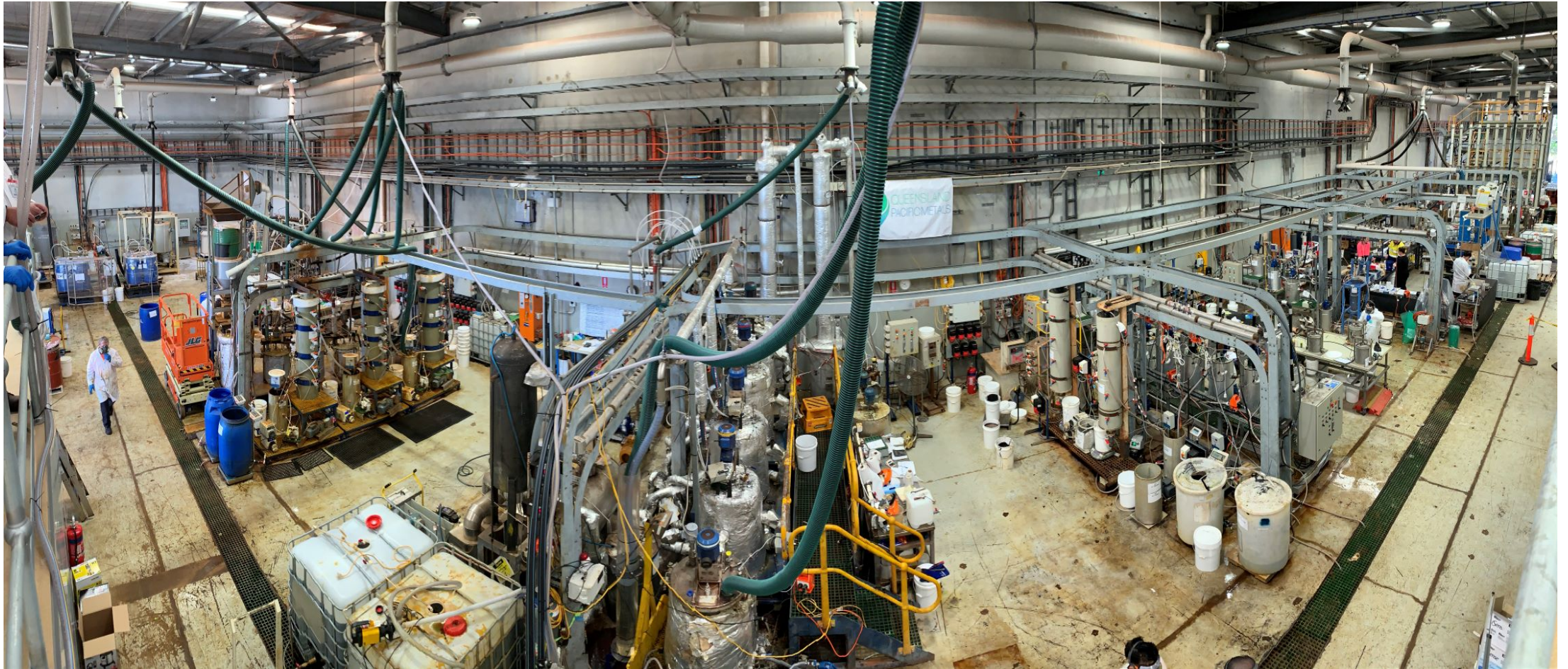
Hematite

Inert Residue

# Flowsheet

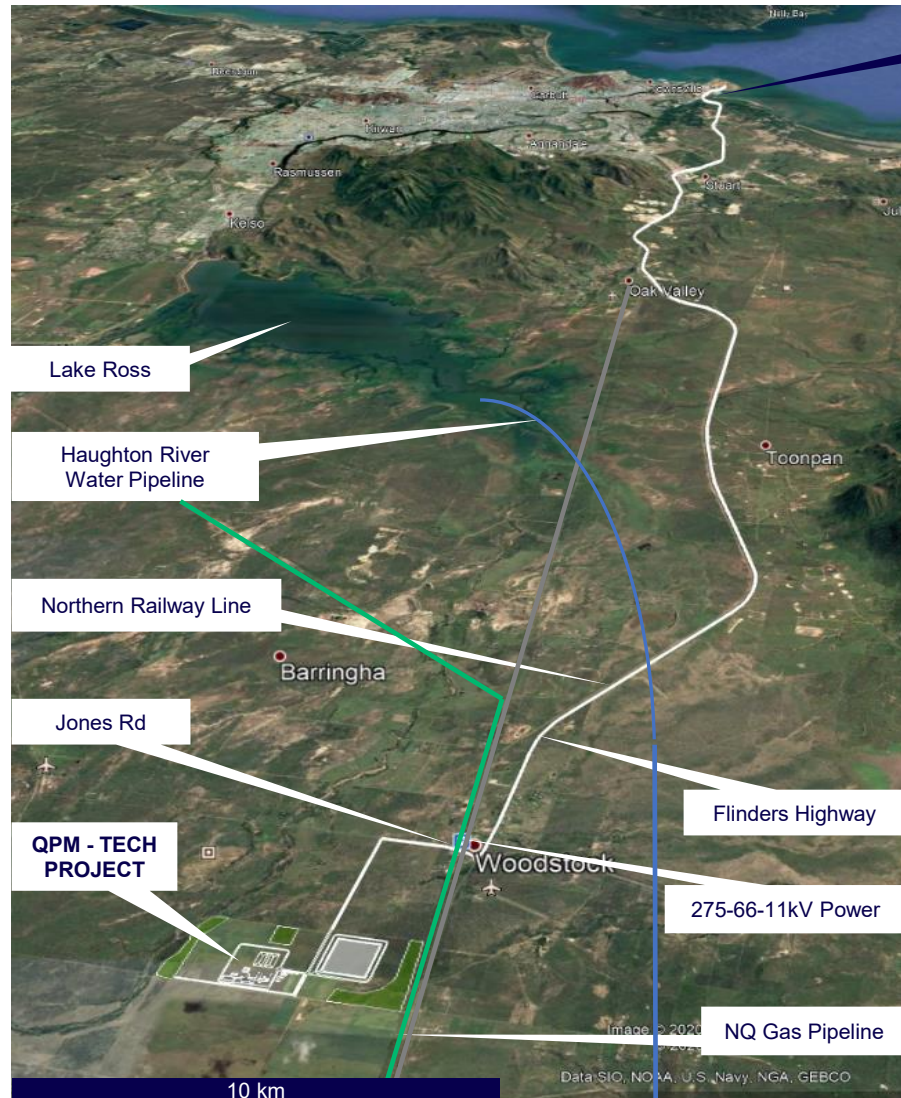


# Pilot Plant



QPM Pilot Plant located at ALS Global Hydrometallurgy Centre of Excellence, Perth, Western Australia

# The Right location for the TECH Project - Lansdown



## Ideal site (290 Ha) allocated to QPM in the Lansdown Eco-Industrial Precinct

- Water pipeline 12 km away
- Gas pipeline (35 PJ/y capacity – we need ~8 PJ/y)
- Electric transmission lines (275kV, 66kV and 11kV)
- Fibre optic communications
- Existing Ross River (140 MW) and Edify (400MW) solar arrays
- Road train access to Townsville Port (Flinders Highway)
- Rail line
- Environment - gently undulating grazing land, sparsely wooded
- Zoned heavy industrial
- Cultural Heritage Management Agreement signed

# Highly Experienced Team



**Dr Stephen Grocott**  
**MD & CEO**

- 40 years experience
- Extensive nickel experience including laterites (HPAL, atmospheric, heap and bio leach) and sulfides
- Extensive alumina refining experience
- Previous positions include:
  - Chief Technical Development Officer at Clean TeQ
  - Chief Advisor Processing at Rio Tinto
  - Global Technology Manager at BHP



**John Downie**  
**Exec Director**

- 40+ years experience
- Extensive nickel laterite experience
- Previous positions include:
  - Director of Mines at Goro
  - Director of Projects at Queensland Nickel
  - CEO of Gladstone Pacific Nickel



**Barry Sanders**  
**Project Director**

- 30+ years experience
- Leadership / strategy roles in feasibility, construction, commissioning and project delivery
- Previous senior positions include:
  - GE
  - John Holland
  - Thiess
  - Jacobs
  - Clough



**Graham Milner**  
**Engineering Manager**

- 40+ years experience
- Extensive large project experience
- Worked for many internationally recognised E&C contractors
- Previous senior positions include:
  - British Gas
  - Foster Wheeler



**Sam Spencer**  
**Chief Technical Officer**

- 20+ years experience
- Technical and economic development of innovative resource projects
- Previous project experience includes:
  - Sunrise Ni-Co-Sc project
  - Weda Bay Ni-Co project
  - \$38b Petronas refinery



**Dr Frank Houllis**  
**Chief Processing Officer**

- 25+ years experience
- Extensive process commercialisation experience
- Previous positions include:
  - CEO Magnis Energy Technologies
  - Director Imperium 3 Townsville
  - Project Leader ANSTO Minerals

# Project Schedule

	Jan-21	Feb-21	Mar-21	Apr-21	May-21	Jun-21	Jul-21	Aug-21	Sep-21	Oct-21	Nov-21	Dec-21	Jan-22	Feb-22	Mar-22	Apr-22	May-22	Jun-22	Jul-22	Aug-22	Sep-22	Oct-22	Nov-22	Dec-22	Jan-23	Feb-23	Mar-23	Apr-23	May-23	Jun-23	Jul-23	Aug-23	Sep-23	Oct-23	Nov-23	Dec-23	
Base Case																																					
Pilot plant activities																																					
Project approvals																																					
Definitive Feasibility Study																																					
FEED (detailed design)																																					
Funding																																					
Construction																																					
Commissioning/Production																																					

# Corporate Overview

## Capital Structure

Pro Forma Shares on issue	1,342.7M
Share Price	15c
Pro Forma Market cap	A\$199M
Top 20	37%

## Board and Key Management

Eddie King	Non Exec Chair
Stephen Grocott	Managing Director
John Downie	Exec Director
Cameron Mclean	Non Exec Director
Jim Simpson	Non Exec Director

## Trading History



# The QPM TECH Project

