



ASX ANNOUNCEMENT

By e-lodgement

06 October 2021

MAJOR GOLD ANOMALIES IDENTIFIED IN KONSOLON AND NZIMA PERMITS

Highlights

- **Extended the Kouroussa anomalies and identified new large geochemical gold anomalous areas in Konsolon and Nzima. The anomalies include:**
 - **two major NW-SE trending anomalies 1,400 metre and 1,050 metre in length in Konsolon which are open along strike**
 - **one large NW-SE trending anomalous area in Nzima with total strike length of 600 metres which is open at both ends along strike**
 - **Kouroussa anomalies extend for over 1,000 metres in total and remains open to the SE.**
- **All assay results have been received for the infill auger drilling program in Kouroussa permit and initial auger drilling programs at Nzima, Konsolon, Monebo and Fadougou permits.**
- **At Nzima, 71 auger holes for 2,130m and 4 RC holes for 280m have been planned. The auger holes are planned to test extensions of the open anomaly along strike while RC holes are planned as a follow-up to intercepts located by auger drilling.**
- **At Kouroussa, 980m of RC drilling for the first phase and 1,000m of RC drilling for the second phase have been planned as a follow-up to defined geochemically anomalous auger intercepts.**
- **At Konsolon, 5,910m of auger drilling for 197 holes have been planned to reduce the spacing between auger lines and test the identified anomalies for extensions along strike.**

Graphite producer and battery anode material developer **Volt Resources Limited (ASX: VRC)** ("**Volt**" or "**the Company**") is pleased to update the market following the completion of the first phase of the auger drilling campaign and the receipt of all auger drilling assay results.

The auger drilling campaign has identified four drilling targets as follows:

- extended the known gold anomalous areas in Kouroussa to over 1,000m in length;
- identified two major gold anomalies in the Konsolon permit for a combined strike length of over 2,450m and which remain open and a number of other gold anomalous areas; and
- a large open gold anomaly within the Nzima permit which is currently 600m in length and remains open.

Managing Director, Trevor Matthews commented: “The results of the auger campaign have identified some large anomalous zones which will be the target of future RC drilling programs and follow up auger drilling programs.

With the recent exploration success by others in the region, particularly near the Kouroussa permit, the Volt Board sees opportunities to provide funding for future exploration programs and to create value for shareholders through considering ownership options for the Guinea gold projects.”

The anomalous areas are defined by a cut-off grade of greater than 0.05 g/t Au. Results exceeding 0.5 g/t Au represent good robust RC drill targets.

Auger drilling results Konsolon Permit

A total of 471 auger holes for a total length of 4,773 metres were drilled in the Konsolon Permit at a spacing of 400m by 100m. The auger program was concentrated in the three areas that have historical systematic soil sampling information. The program intended to improve the geochemical understanding of the areas using a cheap and efficient method that would penetrate and sample below the laterite cover.

The auger program has identified two main gold anomalous areas and four other smaller anomalies. The two main anomalies have strike lengths of 1,400m and 1,050m and are open to the NW and SE. Figure 1 below identifies the anomalous auger assays and interprets the anomalies present.

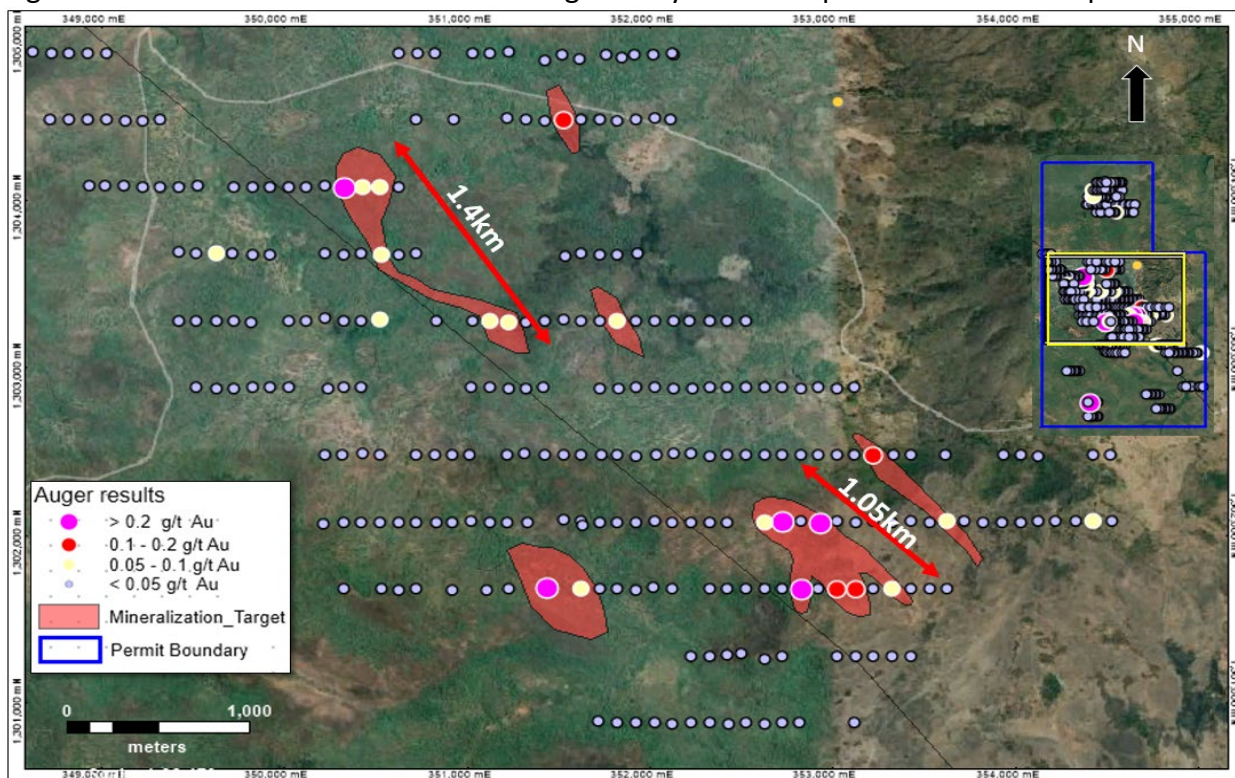


Figure 1. Spatial distribution of auger assay results in Konsolon¹

¹ Refer to ASX announcement dated 23 July 2020 titled “Guinea Gold Projects Exploration Update”. The Company confirms that it is not aware of any new information or data that materially affects the information included in this document.

Upcoming program within the Konsolon permit

- Infill auger drilling program is proposed at the anomalous area in order to better delineate the anomalies.
- More analysis will be conducted on the samples with anomalous Au values and their adjacent samples in order to better understand the nature of the saprolitic material and the form of mineralization present.

Auger drilling results - Nzima Permit

A total of 101 auger holes for a total length of 972m metres were drilled within the Nzima Permit. The auger program was concentrated in the three areas (Area 1, Area 2 and Area 3) that had anomalous grab sample assays and artisanal workings present.

All the assay results have been received and the results have identified Area 1 with a geochemical anomaly. The area has a consistent anomaly with a strike length of 600m which is open along strike and to depth. Assay results with grades up to 1.14g/t gold have been returned. Figure 2 presents the auger assays and interpreted anomaly and photo 1 shows the area close to the identified anomaly that has artisanal workings.

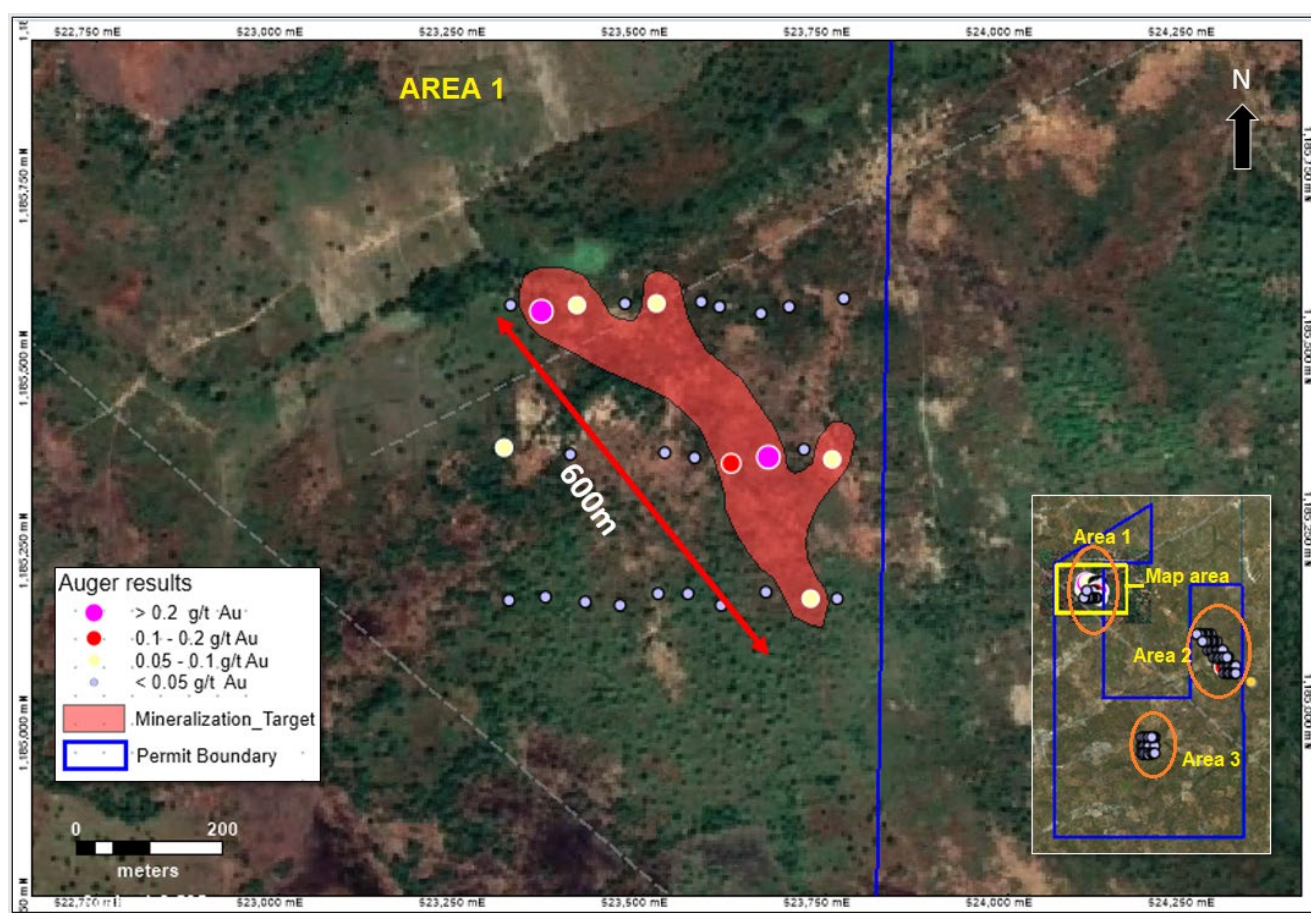


Figure 2. Spatial distribution of auger assay results at Nzima²

Upcoming program at Nzima

A total of 71 auger holes and 4 RC holes have been planned for 2,130m and 280m respectively. Auger holes have been planned to test extensions to the mineralization to the North and to the South while the RC holes have been planned in the area to follow up the mineralization intercepts from auger drilling.

² Refer to ASX announcement dated 23 July 2020 titled "Guinea Gold Projects Exploration Update". The Company confirms that it is not aware of any new information or data that materially affects the information included in this document.



Photo 1. Artisanal workings close to the anomaly delineated by auger drilling at Nzima.

Auger drilling results – Kouroussa Permit

Auger holes were drilled in the Kouroussa permit to test the previously identified anomalies extension and infill the spacing between auger holes. The assay results for the program have now all been received with the results confirming the consistency of the anomalies and have extended the previously identified anomalies to over 1,000m in total strike length.

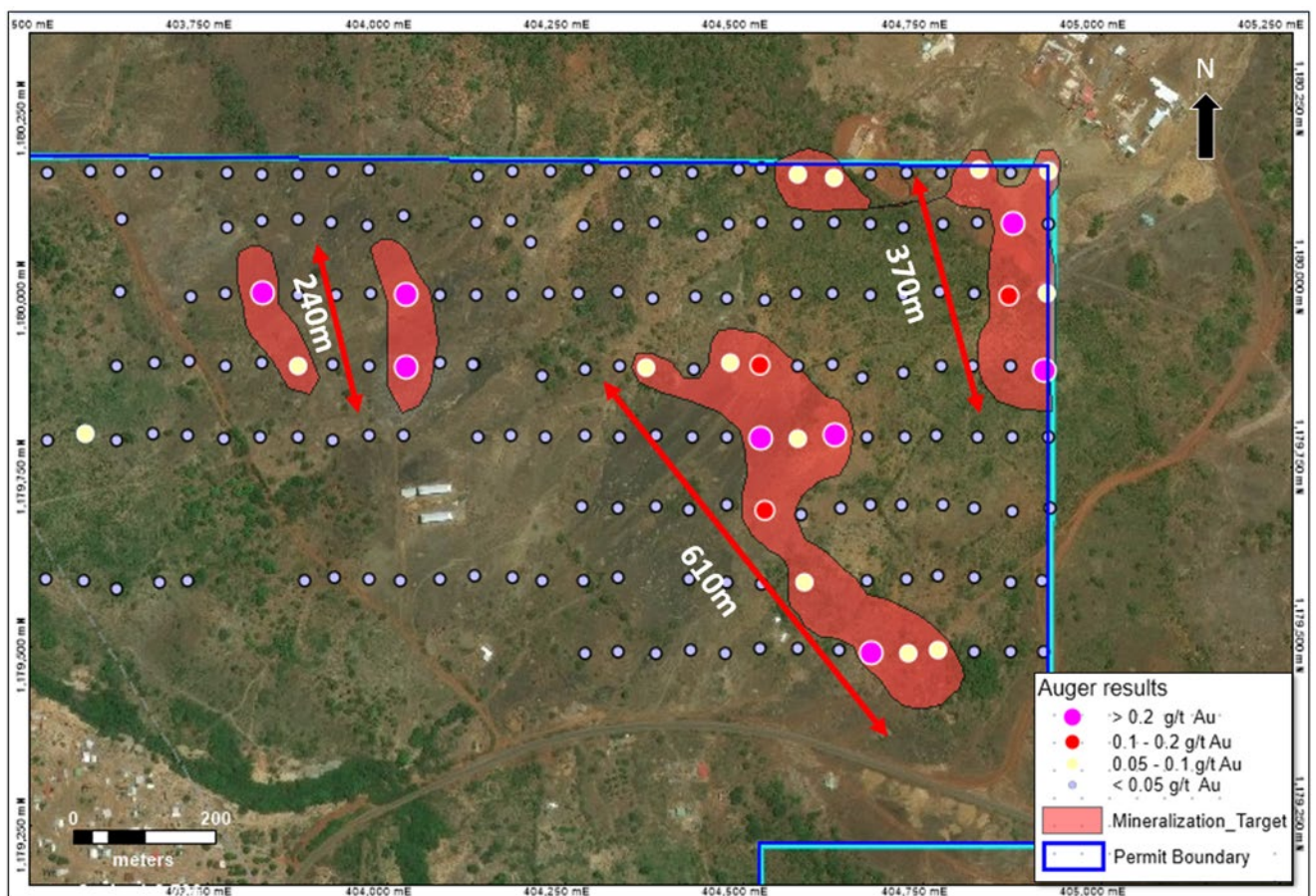


Figure 3. Spatial distribution of auger assay results in Kouroussa³

³ Refer to ASX announcement dated 30 March 2021 titled “Kouroussa Auger Drilling Results Outline Three Gold Anomaly Areas”. The Company confirms that it is not aware of any new information or data that materially affects the information included in this document.

Upcoming program at Kouroussa

A total of 1,980m of RC holes have been planned in the area to followup the mineralization intercepts from auger drilling. The planned length includes 980m of first pass drilling and 1,000m of deep drilling.

Auger Program reporting

The JORC 2012 Table 1 and complete auger drilling results are attached as Annexure 1 and Annexure 2 respectively.

Guinea Projects and Permits

Volt has six permits covering an area of 348.7 square kilometres in Guinea's highly prospective Siguiri Basin and has grouped them into three projects – the Kouroussa Project, Mandiana Project and Konsolon Project. The permits are held through Volt's 100% subsidiary Gold Republic Pty Ltd. See Figure 1 below for the project and permit locations.

The **Kouroussa Project** comprises three permits, the *Kouroussa*, *Kouroussa West* and *Fadougou* permits. The Kouroussa and Kouroussa West permits border the PDI permit which was the subject of a discovery of high-grade gold mineralization in April 2020. To the NE, the Kouroussa Permit borders the Kouroussa mine and the Fadougou permit is located 13km NE of the same mine.

The **Konsolon Project** constitutes one prospective permit. The permit includes multiple geochemical gold in soil anomalies identified by previous explorers but remains under explored.

The **Mandiana Project** comprises the highly prospective *Nzima* permit and *Monebo* permit. The Nzima permit borders the Nzima artisanal mine and is 15km SW of the 1.1Moz Tri-K Deposit owned by Managem.



Figure 3. The Permits located in the Siguiri Basin part of the richly mineralised West African Birimian Gold Belt.

This announcement was authorised for release by the Board of Volt Resources Ltd.

For further information please contact:

Trevor Matthews Managing Director Tel: +61 8 9486 7788



Follow us on Twitter [@ASXVolt](https://twitter.com/ASXVolt)

About Volt Resources Limited

Volt Resources Limited (“Volt”) is a graphite producer/developer and gold exploration company listed on the Australian Stock Exchange under the ASX code VRC. Volt has a 70% controlling interest in the Zavalievsky Graphite business in Ukraine. Zavalievsky is in close proximity to key markets with significant developments in LIB facilities planned to service the European based car makers and renewable energy sector. Zavalievsky benefits from an existing customer base and graphite product supply chains based on excellent transport infrastructure covering road, rail, river and sea freight combined with reliable grid power, ample potable ground water supply and good communications. Zavalievsky has current plans to install a processing plant and equipment in order to commence production of spheronised purified graphite (SPG) for the European LIB market within the next 12 months⁴.

Volt is also progressing the development of its large wholly-owned Bunyu Graphite Project in Tanzania, as well as gold exploration in Guinea leveraging the Company’s existing extensive networks in Africa.

The Bunyu Graphite Project is ideally located near to critical infrastructure with sealed roads running through the project area and ready access to the deep-water port of Mtwara 140km from the Project. In 2018, Volt reported the completion of the Feasibility Study (“FS”) into the Stage 1 development of the Bunyu Graphite Project. The Stage 1 development is based on a mining and processing plant annual throughput rate of 400,000 tonnes of ore to produce on average 23,700tpa of graphite products⁵. A key objective of the Stage 1 development is to establish infrastructure and market position in support of the development of the significantly larger Stage 2 expansion project at Bunyu.

The Guinea Gold Projects comprise 6 permits in Guinea, West Africa having a total area of 348km. The Projects are located in the prolific Siguiri Basin which forms part of the richly mineralised West African Birimian Gold Belt.

Competent Person’s Statement

The information in this announcement that relates to exploration results is based on information compiled and/or reviewed by Mr Mark Gifford, an independent Geological expert consulting to Volt Resources Limited. Mr Mark Gifford is a Fellow of the Australian Institute of Mining and Metallurgy and has sufficient experience which is relevant to the style of mineralisation and type of deposit under consideration and to the activity which he is undertaking to qualify as a Competent Person as defined in the December 2012 edition of the “Australasian Code for Reporting of Exploration Results, Mineral Resources and Ore Reserves” (JORC Code). Mr Gifford consents to the inclusion in the announcement of the matters based on his information in the form and context in which it appears.

⁴ Refer to Volt’s ASX announcements titled “Volt to Acquire European Graphite Business following Completion of Due Diligence” dated 14 May 2021 and “Completion of the ZG Group Transaction Following Execution of New Convertible Securities Facility” dated 26 July 2021.

⁵ Refer to Volt’s ASX announcement titled “Positive Stage 1 Feasibility Study Bunyu Graphite Project” dated 31 July 2018. The Company confirms that it is not aware of any new information or data that materially affects the information included in this document and that all material assumptions and technical parameters underpinning the estimates continue to apply and have not materially changed.

Appendix 1

Table 1 JORC Code (2012)

Section 1 Sampling Techniques and Data

Criteria	JORC Code explanation	Commentary
Sampling techniques	<ul style="list-style-type: none"> <i>Nature and quality of sampling (e.g. cut channels, random chips, or specific specialised industry standard measurement tools appropriate to the minerals under investigation, such as down hole gamma sondes, or handheld XRF instruments, etc). These examples should not be taken as limiting the broad meaning of sampling.</i> <i>Include reference to measures taken to ensure sample representivity and the appropriate calibration of any measurement tools or systems used.</i> <i>Aspects of the determination of mineralisation that are Material to the Public Report.</i> <i>In cases where 'industry standard' work has been done this would be relatively simple (e.g. 'reverse circulation drilling was used to obtain 1 m samples from which 3 kg was pulverised to produce a 30 g charge for fire assay'). In other cases more explanation may be required, such as where there is coarse gold that has inherent sampling problems. Unusual commodities or mineralisation types (e.g. submarine nodules) may warrant disclosure of detailed information.</i> 	<ul style="list-style-type: none"> All auger holes were composite sampled in a routine of 3metre composite samples from surficial laterites and 3m composite within the saprolitic zone. Where there was less than 3metres of saprolite intercepted, a composite of the total intercepted saprolite was sampled. Some composite sampling widths varied depending on the width of lithological unit encountered, some samples were taken to a minimum of 1m widths. For all composited samples and unsampled intervals the remnant cuttings have been preserved and are available for future test work if required. Samples were collected in 1m intervals at the drill site and composited at the base camp, split using a 7 vane riffler splitter to obtain a ~2kg representative sample. Certified reference materials, duplicates and blanks were inserted at even distribution (1:20 respectively) in the sample stream. All grab samples were geologically logged by a suitably qualified geologist and submitted to SGS Bamako for analysis.
Drilling techniques	<ul style="list-style-type: none"> <i>Drill type (e.g. core, reverse circulation, open-hole hammer, rotary air blast, auger, Bangka, sonic, etc) and details (e.g. core diameter, triple or standard tube, depth of diamond tails, face-sampling bit or other type, whether core is oriented and if so, by what method, etc).</i> 	<ul style="list-style-type: none"> Auger Drilling was carried out by SIMG mining Services Company using a land cruiser mounted auger rig.
Drill sample recovery	<ul style="list-style-type: none"> <i>Method of recording and assessing core and chip sample recoveries and results assessed.</i> <i>Measures taken to maximise sample recovery and ensure representative nature of the samples.</i> <i>Whether a relationship exists between sample recovery and grade and whether sample bias may have occurred due to preferential loss/gain of fine/coarse material.</i> 	<ul style="list-style-type: none"> The collection of sample is done after 1m drill interval as it recovered by the auger drilling process. There was always a geologist present onsite to ensure that the sample was representative of the individual metre and did not contain (to minimal) material from further up the drill string. Auger can cause a smearing effect on samples during collection due to the nature of the process, this effect on the resultant grades of the material was minimized by using composite samples for both the upper and lower samples collated.
Logging	<ul style="list-style-type: none"> <i>Whether core and chip samples have been geologically and geotechnically logged to a level of detail to support appropriate Mineral Resource estimation, mining studies and metallurgical studies.</i> 	<ul style="list-style-type: none"> All samples were geologically logged by Volt's in country Geological team. The qualitative system of logging was used to record the necessary information from recovered samples. Emphasis was placed on the separation

Criteria	JORC Code explanation	Commentary
	<ul style="list-style-type: none"> <i>Whether logging is qualitative or quantitative in nature. Core (or costean, channel, etc) photography.</i> <i>The total length and percentage of the relevant intersections logged.</i> 	<p>of the upper laterised material and the underlying saprolitic material. Anomalous minerals and weathering within both geological settings were recorded and are available to be used for detail post analysis of the primary samples.</p> <ul style="list-style-type: none"> Logging was done in every 1m interval sample, with all material auger drilled recovered from each metre of the auger hole.
<i>Sub-sampling techniques and sample preparation</i>	<ul style="list-style-type: none"> <i>If core, whether cut or sawn and whether quarter, half or all core taken.</i> <i>If non-core, whether riffled, tube sampled, rotary split, etc and whether sampled wet or dry.</i> <i>For all sample types, the nature, quality and appropriateness of the sample preparation technique.</i> <i>Quality control procedures adopted for all sub-sampling stages to maximise representivity of samples.</i> <i>Measures taken to ensure that the sampling is representative of the in situ material collected, including for instance results for field duplicate/second-half sampling.</i> <i>Whether sample sizes are appropriate to the grain size of the material being sampled.</i> 	<ul style="list-style-type: none"> Auger holes were sampled by compositing 3m interval sample from the laterite layer and 3 metres of the saprolite located at the base of hole. To avoid mixing of laterite and saprolite, sampling was not completed at the interface between the laterites and saprolites. Once all samples were combined from the defined "upper" and "lower" zones, they were thoroughly mixed prior to being split down by a 7 vane splitter to an approximate 2kg sub-sample. This sample was dried and prepared for pulverization and reduction to a representative sample for analysis by a SGS managed laboratory in Bamako, Mali. This sample preparation was completed to an industry best practice. During sample collation, 15% of the sample stream was QAQC samples and they were evenly inserted through the sample stream. The QAQC samples included certified standard materials, Blanks and Duplicates. At SGS Mali, industry best practice is adopted for laboratory sub sampling with avoidance of any cross contamination. The collected sample size of around 2kg is considered appropriate to reasonably represent the material being test.
<i>Quality of assay data and laboratory tests</i>	<ul style="list-style-type: none"> <i>The nature, quality and appropriateness of the assaying and laboratory procedures used and whether the technique is considered partial or total.</i> <i>For geophysical tools, spectrometers, handheld XRF instruments, etc, the parameters used in determining the analysis including instrument make and model, reading times, calibrations factors applied and their derivation, etc.</i> <i>Nature of quality control procedures adopted (e.g. standards, blanks, duplicates, external</i> 	<ul style="list-style-type: none"> Analyses were undertaken at accredited Laboratory SGS Bamako in Mali which has full certification. The samples were assayed using Fire Assay which is appropriate for the element being determined. There was no reliance on determination of analysis by geophysical tools. Volt Resources QAQC program include the inclusion of 5% certified standards,

Criteria	JORC Code explanation	Commentary
	<i>laboratory checks) and whether acceptable levels of accuracy (i.e. lack of bias) and precision have been established.</i>	5% field duplicates and 5% blank material.
<i>Verification of sampling and assaying</i>	<ul style="list-style-type: none"> • <i>The verification of significant intersections by either independent or alternative company personnel.</i> • <i>The use of twinned holes.</i> • <i>Documentation of primary data, data entry procedures, data verification, data storage (physical and electronic) protocols.</i> • <i>Discuss any adjustment to assay data.</i> 	<ul style="list-style-type: none"> • Due to early stage of sampling program and no reliance on the data other than to rapidly assess the prospectivity of the ground for more detailed exploration. No independent verification was used. • No twinned holes were completed. • The data was captured at site in a hard copy form with appropriate entry fields to guide the geologist, then captured into an excel spreadsheet and later uploaded into an access database.
<i>Location of data points</i>	<ul style="list-style-type: none"> • <i>Accuracy and quality of surveys used to locate drill holes (collar and down-hole surveys), trenches, mine workings and other locations used in Mineral Resource estimation.</i> • <i>Specification of the grid system used.</i> • <i>Quality and adequacy of topographic control.</i> 	<ul style="list-style-type: none"> • A hand-held GPS was used to identify the position of all grab samples (xy horizontal error of 5 metres) • Reported using WGS 84 grid and UTM datum zone 29 North. • Not applicable
<i>Data spacing and distribution</i>	<ul style="list-style-type: none"> • <i>Data spacing for reporting of Exploration Results.</i> • <i>Whether the data spacing and distribution is sufficient to establish the degree of geological and grade continuity appropriate for the Mineral Resource and Ore Reserve estimation procedure(s) and classifications applied.</i> • <i>Whether sample compositing has been applied.</i> 	<ul style="list-style-type: none"> • Auger holes were located on a nominal 50mx200m spaced pattern. • Drilling reported is in early exploration nature, therefore no mineral resources or reserves have been estimated. • 3m sample composite samples or less depending upon the lithological intercept.
<i>Orientation of data in relation to geological structure</i>	<ul style="list-style-type: none"> • <i>Whether the orientation of sampling achieves unbiased sampling of possible structures and the extent to which this is known, considering the deposit type.</i> • <i>If the relationship between the drilling orientation and the orientation of key mineralised structures is considered to have introduced a sampling bias, this should be assessed and reported if material.</i> 	<ul style="list-style-type: none"> • No orientation drilling was conducted as all holes were vertical and shallow in their form.
<i>Sample security</i>	<ul style="list-style-type: none"> • <i>The measures taken to ensure sample security.</i> 	<ul style="list-style-type: none"> • The sample's chain of custody involved the collected samples being shipped using company's car to the guarded base camp. When enough samples were collected and collated, they were then transported to SGS sample collection facility in Siguiri using company's car driven by company's driver.
<i>Audits or reviews</i>	<ul style="list-style-type: none"> • <i>The results of any audits or reviews of sampling techniques and data.</i> 	<ul style="list-style-type: none"> • No audits or reviews have yet been undertaken.

Section 2 Reporting of Exploration Results

(Criteria listed in the preceding section also apply to this section.)

Criteria	JORC Code explanation	Commentary
<i>Mineral tenement and land tenure status</i>	<ul style="list-style-type: none"> • <i>Type, reference name/number, location and ownership including agreements or material issues with third parties such as joint ventures, partnerships, overriding royalties, native title interests, historical sites, wilderness or national park and environmental settings.</i> • <i>The security of the tenure held at the time of reporting along with any known impediments to obtaining a licence to operate in the area.</i> 	<ul style="list-style-type: none"> • The results reported in this report are all from Konsolon Permit number 22800 in Dinguiraye Prefecture granted on 17/01/2020, Monebo Permit number 23058 in Mandiana Prefecture granted on 16/03/2021, Nzima Permit number 22980, in Mandiana Prefecture granted on 9/9/2020, Kouroussa Permit number 22982 Kouroussa Prefecture granted on 9/9/2020 and Fadougou permit number 22981 in Kouroussa Prefecture granted on 16/09/2020. All the permits are granted for the period of 3 years. • Konsolon Permit is held under Novo Mines SARLU and the other Permits are held under KB GOLD SARLU, incorporated in Guinea. The surface area is administered by the Government as native title. The areas are in rural areas, with small villages.
<i>Exploration done by other parties</i>	<ul style="list-style-type: none"> • <i>Acknowledgment and appraisal of exploration by other parties.</i> 	<ul style="list-style-type: none"> • The Konsolon permit was previously explored by a Russian company which conducted a systematic soil sampling in the area. For the other permit, there are no previous exploration works and/or data that has been compiled or completed by other parties.
<i>Geology</i>	<ul style="list-style-type: none"> • <i>Deposit type, geological setting and style of mineralisation.</i> 	<ul style="list-style-type: none"> • Birimian Greenstone lode style gold is being targeted.
<i>Drill hole Information</i>	<ul style="list-style-type: none"> • <i>A summary of all information material to the understanding of the exploration results including a tabulation of the following information for all Material drill holes:</i> <ul style="list-style-type: none"> ○ <i>easting and northing of the drill hole collar</i> ○ <i>elevation or RL (Reduced Level – elevation above sea level in metres) of the drill hole collar</i> ○ <i>dip and azimuth of the hole</i> ○ <i>down hole length and interception depth</i> ○ <i>hole length.</i> • <i>If the exclusion of this information is justified on the basis that the information is not Material and this exclusion does not detract from the understanding of the report, the Competent Person should clearly explain why this is the case.</i> 	<ul style="list-style-type: none"> • Results for all the auger near surface drilling undertaken with gold anomalies are represented in map format in the main body of this announcement. • Given the reconnaissance nature of the auger drilling for the purpose of enhancing the geochemical understanding of the project and large number of samples, plan presentation as provided in the body provides a fair understanding of the results and not listing all the results does not detract from the understanding of the report.
<i>Data aggregation methods</i>	<ul style="list-style-type: none"> • <i>In reporting Exploration Results, weighting averaging techniques, maximum and/or minimum grade truncations (e.g. cutting of high grades) and cut-off grades are usually Material and should be stated.</i> • <i>Where aggregate intercepts incorporate short lengths of high grade results and longer lengths of low grade results, the procedure used for such aggregation should be stated and some typical examples of such aggregations should be shown in detail.</i> • <i>The assumptions used for any reporting of metal equivalent values should be clearly stated.</i> 	<ul style="list-style-type: none"> • Grade of composited intervals are reported. • Results on the maps are summarized by showing best grade values. • No metal equivalent reporting is used or applied.

Criteria	JORC Code explanation	Commentary
<i>Relationship between mineralisation widths and intercept lengths</i>	<ul style="list-style-type: none"> • <i>These relationships are particularly important in the reporting of Exploration Results.</i> • <i>If the geometry of the mineralisation with respect to the drill hole angle is known, its nature should be reported.</i> • <i>If it is not known and only the down hole lengths are reported, there should be a clear statement to this effect (e.g. 'down hole length, true width not known').</i> 	<ul style="list-style-type: none"> • Since this is an early exploration stage, the results reported are considered early exploration reconnaissance in nature.
<i>Diagrams</i>	<ul style="list-style-type: none"> • <i>Appropriate maps and sections (with scales) and tabulations of intercepts should be included for any significant discovery being reported. These should include, but not be limited to a plan view of drill hole collar locations and appropriate sectional views.</i> 	<ul style="list-style-type: none"> • Maps showing the auger holes locations assays results superimposed with previous grab sample location assay results.
<i>Balanced reporting</i>	<ul style="list-style-type: none"> • <i>Where comprehensive reporting of all Exploration Results is not practicable, representative reporting of both low and high grades and/or widths should be practiced to avoid misleading reporting of Exploration Results.</i> 	<ul style="list-style-type: none"> • All material available results have been reported.
<i>Other substantive exploration data</i>	<ul style="list-style-type: none"> • <i>Other exploration data, if meaningful and material, should be reported including (but not limited to): geological observations; geophysical survey results; geochemical survey results; bulk samples – size and method of treatment; metallurgical test results; bulk density, groundwater, geotechnical and rock characteristics; potential deleterious or contaminating substances.</i> 	<ul style="list-style-type: none"> • No other exploration data that could be considered meaningful and/or material has been omitted from this report.
<i>Further work</i>	<ul style="list-style-type: none"> • <i>The nature and scale of planned further work (e.g. tests for lateral extensions or depth extensions or large-scale step-out drilling).</i> • <i>Diagrams clearly highlighting the areas of possible extensions, including the main geological interpretations and future drilling areas, provided this information is not commercially sensitive.</i> 	<ul style="list-style-type: none"> • Further auger infill drilling and sampling as defined by the anomalous results noted in this primary series of analyses.

Appendix 2

Auger Results for Konsolon, Fadougou, Nzima, Monebo and Kouroussa

Prospect	Hole_ID	Easting	Northing	RL	PlanDip	EOH_m	From	To	Gold g/t
Konsolon	DAG0001	353,023	1,302,881	403	90	11.00	8.00	11.00	<0.01
Konsolon	DAG0002	353,114	1,302,887	402	90	10.00	7.00	10.00	<0.01
Konsolon	DAG0003	352,920	1,302,886	394	90	7.00	4.00	7.00	0.01
Konsolon	DAG0004	352,821	1,302,885	403	90	12.00	9.00	12.00	<0.01
Konsolon	DAG0005	352,722	1,302,891	412	90	9.00	6.00	9.00	<0.01
Konsolon	DAG0006	352,624	1,302,886	391	90	8.00	5.00	8.00	<0.01
Konsolon	DAG0007	352,522	1,302,893	390	90	8.00	5.00	8.00	<0.01
Konsolon	DAG0008	352,420	1,302,886	393	90	9.00	6.00	9.00	<0.01
Konsolon	DAG0009	352,327	1,302,887	394	90	10.00	7.00	10.00	0.03
Konsolon	DAG0010	352,228	1,302,883	393	90	6.00	3.00	6.00	0.04
Konsolon	DAG0011	352,125	1,302,882	407	90	8.00	5.00	8.00	<0.01
Konsolon	DAG0012	352,022	1,302,888	401	90	9.00	6.00	9.00	<0.01
Konsolon	DAG0013	351,924	1,302,888	409	90	7.00	4.00	7.00	0.01
Konsolon	DAG0014	351,826	1,302,883	399	90	10.00	7.00	10.00	<0.01
Konsolon	DAG0015	351,727	1,302,885	413	90	8.00	5.00	8.00	0.03
Konsolon	DAG0016	351,920	1,302,481	444	90	14.00	11.00	14.00	<0.01
Konsolon	DAG0017	351,817	1,302,486	446	90	11.00	8.00	11.00	0.04
Konsolon	DAG0018	351,735	1,302,485	438	90	11.00	8.00	11.00	0.02
Konsolon	DAG0019	351,626	1,302,484	441	90	14.00	11.00	14.00	0.03
Konsolon	DAG0020	351,528	1,302,488	435	90	13.00	10.00	13.00	<0.01
Konsolon	DAG0021	351,424	1,302,486	427	90	13.00	10.00	13.00	0.01
Konsolon	DAG0022	351,316	1,302,492	421	90	15.00	12.00	15.00	0.01
Konsolon	DAG0023	351,220	1,302,482	413	90	16.00	13.00	16.00	<0.01
Konsolon	DAG0024	351,419	1,302,891	434	90	7.00	4.00	7.00	<0.01
Konsolon	DAG0025	351,324	1,302,882	442	90	11.00	8.00	11.00	0.03
Konsolon	DAG0026	351,228	1,302,884	430	90	15.00	12.00	15.00	0.04
Konsolon	DAG0027	351,123	1,302,886	431	90	13.00	10.00	13.00	0.02
Konsolon	DAG0028	351,021	1,302,890	439	90	15.00	12.00	15.00	0.03
Konsolon	DAG0029	352,131	1,302,498	430	90	7.00	4.00	7.00	<0.01
Konsolon	DAG0030	352,034	1,302,489	430	90	9.00	6.00	9.00	<0.01
Konsolon	DAG0031	352,223	1,302,493	416	90	5.00	2.00	5.00	<0.01
Konsolon	DAG0032	352,326	1,302,480	407	90	10.00	7.00	10.00	0.01
Konsolon	DAG0033	352,425	1,302,484	411	90	8.00	5.00	8.00	0.01
Konsolon	DAG0034	352,523	1,302,485	409	90	7.00	4.00	7.00	<0.01
Konsolon	DAG0035	352,624	1,302,488	410	90	9.00	6.00	9.00	0.02
Konsolon	DAG0036	352,721	1,302,484	414	90	8.00	5.00	8.00	<0.01
Konsolon	DAG0037	352,826	1,302,489	415	90	9.00	6.00	9.00	0.02
Konsolon	DAG0038	352,919	1,302,487	414	90	9.00	6.00	9.00	0.01
Konsolon	DAG0039	353,023	1,302,484	417	90	7.00	4.00	7.00	<0.01
Konsolon	DAG0040	353,120	1,302,483	416	90	7.00	4.00	7.00	<0.01
Konsolon	DAG0041	353,219	1,302,484	408	90	7.00	4.00	7.00	0.12
Konsolon	DAG0042	353,328	1,302,490	414	90	6.00	3.00	6.00	0.01
Konsolon	DAG0043	353,425	1,302,487	414	90	15.00	12.00	15.00	<0.01
Konsolon	DAG0044	354,523	1,302,087	475	90	12.00	9.00	12.00	0.02
Konsolon	DAG0045	354,423	1,302,090	473	90	11.00	8.00	11.00	0.05
Konsolon	DAG0046	354,325	1,302,090	474	90	13.00	10.00	13.00	<0.01
Konsolon	DAG0047	354,220	1,302,087	470	90	15.00	12.00	15.00	0.01
Konsolon	DAG0048	354,025	1,302,086	484	90	16.00	13.00	16.00	<0.01
Konsolon	DAG0049	354,125	1,302,091	469	90	15.00	12.00	15.00	<0.01
Konsolon	DAG0050	353,922	1,302,085	468	90	15.00	12.00	15.00	0.01
Konsolon	DAG0051	353,824	1,302,084	467	90	15.00	12.00	15.00	<0.01
Konsolon	DAG0052	353,720	1,302,087	466	90	14.00	11.00	14.00	<0.01
Konsolon	DAG0053	353,620	1,302,089	461	90	9.00	6.00	9.00	0.05
Konsolon	DAG0054	353,528	1,302,086	462	90	13.00	10.00	13.00	0.01
Konsolon	DAG0055	353,424	1,302,088	461	90	15.00	12.00	15.00	0.02
Konsolon	DAG0056	353,320	1,302,083	458	90	20.00	17.00	20.00	0.04
Konsolon	DAG0057	353,222	1,302,092	459	90	20.00	17.00	20.00	0.02
Konsolon	DAG0058	352,823	1,302,087	453	90	22.00	19.00	22.00	0.03
Konsolon	DAG0059	353,024	1,302,087	458	90	14.00	11.00	14.00	<0.01
Konsolon	DAG0060	352,925	1,302,085	455	90	16.00	13.00	16.00	0.21
Konsolon	DAG0061	352,422	1,302,085	441	90	16.00	13.00	16.00	<0.01
Konsolon	DAG0062	353,125	1,302,085	459	90	20.00	17.00	20.00	0.03
Konsolon	DAG0063	352,722	1,302,089	455	90	21.00	18.00	21.00	0.68

Konsolon	DAG0064	352,624	1,302,085	447	90	18.00	15.00	18.00	0.06
Konsolon	DAG0065	359,525	1,302,087	444	90	17.00	14.00	17.00	<0.01
Konsolon	DAG0066	352,323	1,302,086	443	90	16.00	13.00	16.00	<0.01
Konsolon	DAG0067	350,214	1,302,074	409	90	11.00	8.00	11.00	0.01
Konsolon	DAG0068	350,324	1,302,083	404	90	13.00	10.00	13.00	<0.01
Konsolon	DAG0069	350,423	1,302,083	393	90	12.00	9.00	12.00	<0.01
Konsolon	DAG0070	352,223	1,302,084	437	90	16.00	13.00	16.00	<0.01
Konsolon	DAG0071	350,525	1,302,082	386	90	14.00	11.00	14.00	<0.01
Konsolon	DAG0072	350,625	1,302,085	373	90	8.00	5.00	8.00	0.02
Konsolon	DAG0073	350,919	1,302,080	383	90	12.00	9.00	12.00	<0.01
Konsolon	DAG0074	350,829	1,302,082	384	90	8.00	5.00	8.00	<0.01
Konsolon	DAG0075	350,724	1,302,086	389	90	12.00	9.00	12.00	0.01
Konsolon	DAG0076	352,121	1,302,086	439	90	20.00	17.00	20.00	0.01
Konsolon	DAG0077	351,022	1,302,088	372	90	9.00	6.00	9.00	0.02
Konsolon	DAG0078	352,023	1,302,088	432	90	17.00	15.00	17.00	0.01
Konsolon	DAG0079	351,125	1,302,081	373	90	10.00	7.00	10.00	<0.01
Konsolon	DAG0080	351,924	1,302,086	425	90	14.00	12.00	14.00	0.02
Konsolon	DAG0081	351,819	1,302,086	415	90	14.00	12.00	14.00	<0.01
Konsolon	DAG0082	351,722	1,302,078	406	90	12.00	9.00	12.00	0.01
Konsolon	DAG0083	351,222	1,302,085	380	90	12.00	9.00	12.00	0.02
Konsolon	DAG0084	351,327	1,302,084	382	90	10.00	7.00	10.00	0.01
Konsolon	DAG0085	351,531	1,302,096	402	90	11.00	8.00	11.00	<0.01
Konsolon	DAG0086	351,625	1,302,090	398	90	11.00	9.00	11.00	0.01
Konsolon	DAG0087	352,522	1,303,288	389	90	10.00	7.00	10.00	<0.01
Konsolon	DAG0088	352,424	1,303,284	391	90	11.00	8.00	11.00	0.01
Konsolon	DAG0089	352,324	1,303,286	388	90	8.00	5.00	8.00	0.02
Konsolon	DAG0090	352,215	1,303,283	378	90	12.00	9.00	12.00	<0.01
Konsolon	DAG0091	352,125	1,303,285	382	90	12.00	9.00	12.00	0.02
Konsolon	DAG0092	352,024	1,303,282	383	90	12.00	9.00	12.00	<0.01
Konsolon	DAG0093	351,924	1,303,287	381	90	13.00	10.00	13.00	<0.01
Konsolon	DAG0094	351,823	1,303,287	369	90	10.00	7.00	10.00	0.08
Konsolon	DAG0095	351,621	1,303,283	387	90	11.00	8.00	11.00	<0.01
Konsolon	DAG0096	351,725	1,303,284	386	90	14.00	11.00	14.00	0.03
Konsolon	DAG0097	351,524	1,303,290	398	90	10.00	7.00	10.00	0.01
Konsolon	DAG0098	351,422	1,303,288	408	90	8.00	5.00	8.00	<0.01
Konsolon	DAG0099	351,322	1,303,277	419	90	7.00	4.00	7.00	0.03
Konsolon	DAG0100	351,223	1,303,280	449	90	12.00	9.00	12.00	0.05
Konsolon	DAG0101	351,120	1,303,284	437	90	13.00	10.00	13.00	0.05
Konsolon	DAG0102	351,028	1,303,286	431	90	13.00	10.00	13.00	0.04
Konsolon	DAG0103	350,829	1,303,284	409	90	10.00	7.00	10.00	0.01
Konsolon	DAG0104	350,723	1,303,692	420	90	13.00	10.00	13.00	0.02
Konsolon	DAG0105	350,624	1,303,683	418	90	13.00	10.00	13.00	0.04
Konsolon	DAG0106	350,520	1,303,297	381	90	13.00	10.00	13.00	0.08
Konsolon	DAG0107	350,422	1,303,287	378	90	11.00	8.00	11.00	<0.01
Konsolon	DAG0108	350,325	1,303,286	372	90	13.00	10.00	13.00	0.01
Konsolon	DAG0109	350,119	1,303,289	376	90	13.00	10.00	13.00	<0.01
Konsolon	DAG0110	350,222	1,303,303	364	90	5.00	3.00	5.00	0.02
Konsolon	DAG0111	350,527	1,303,680	413	90	12.00	9.00	12.00	0.06
Konsolon	DAG0112	350,422	1,303,689	404	90	11.00	8.00	11.00	0.02
Konsolon	DAG0113	350,325	1,303,684	384	90	10.00	7.00	10.00	<0.01
Konsolon	DAG0114	350,226	1,303,689	374	90	9.00	6.00	9.00	<0.01
Konsolon	DAG0115	350,623	1,304,085	416	90	12.00	9.00	12.00	0.03
Konsolon	DAG0116	350,525	1,304,081	418	90	16.00	13.00	16.00	0.06
Konsolon	DAG0117	350,425	1,304,083	416	90	11.00	8.00	11.00	0.07
Konsolon	DAG0118	350,323	1,304,084	409	90	15.00	12.00	15.00	0.86
Konsolon	DAG0119	350,225	1,304,089	395	90	14.00	11.00	14.00	0.02
Konsolon	DAG0120	350,122	1,304,087	392	90	7.00	4.00	7.00	0.01
Konsolon	DAG0121	350,025	1,304,084	384	90	8.00	5.00	8.00	0.02
Konsolon	DAG0122	349,925	1,304,083	381	90	10.00	7.00	10.00	0.02
Konsolon	DAG0123	349,825	1,304,086	363	90	7.00	4.00	7.00	0.03
Konsolon	DAG0124	349,722	1,304,085	365	90	11.00	8.00	11.00	0.02
Konsolon	DAG0126	349,527	1,304,090	346	90	7.00	4.00	7.00	0.01
Konsolon	DAG0127	349,425	1,304,087	360	90	12.00	9.00	12.00	0.02
Konsolon	DAG0128	349,321	1,304,087	370	90	11.00	8.00	11.00	<0.01

Konsolon	DAG0129	349,227	1,304,086	378	90	9.00	6.00	9.00	0.04
Konsolon	DAG0130	349,123	1,304,089	387	90	7.00	4.00	7.00	0.02
Konsolon	DAG0131	349,022	1,304,090	392	90	9.00	6.00	9.00	0.03
Konsolon	DAG0132	348,931	1,304,093	403	90	9.00	6.00	9.00	<0.01
Konsolon	DAG0133	349,825	1,303,678	361	90	14.00	11.00	14.00	0.02
Konsolon	DAG0134	349,719	1,303,688	370	90	13.00	10.00	13.00	<0.01
Konsolon	DAG0135	349,626	1,303,691	366	90	10.00	7.00	10.00	0.06
Konsolon	DAG0136	349,520	1,303,685	357	90	8.00	5.00	8.00	<0.01
Konsolon	DAG0137	349,423	1,303,701	372	90	10.00	7.00	10.00	<0.01
Konsolon	DAG0138	349,917	1,303,681	363	90	10.00	7.00	10.00	0.01
Konsolon	DAG0139	350,023	1,303,288	373	90	11.00	8.00	11.00	<0.01
Konsolon	DAG0140	350,623	1,304,882	376	90	12.00	9.00	12.00	<0.01
Konsolon	DAG0141	351,928	1,303,688	370	90	5.00	2.00	5.00	0.04
Konsolon	DAG0142	351,823	1,303,684	383	90	5.00	3.00	5.00	<0.01
Konsolon	DAG0143	351,723	1,303,683	389	90	5.00	3.00	5.00	<0.01
Konsolon	DAG0144	351,621	1,303,685	395	90	5.00	2.00	5.00	<0.01
Konsolon	DAG0145	351,535	1,303,673	416	90	5.00	2.00	4.00	0.02
Konsolon	DAG0146	349,426	1,303,282	390	90	9.00	6.00	9.00	<0.01
Konsolon	DAG0147	349,518	1,303,285	390	90	7.00	4.00	7.00	<0.01
Konsolon	DAG0148	349,628	1,303,287	420	90	13.00	10.00	13.00	<0.01
Konsolon	DAG0149	349,723	1,303,282	422	90	15.00	12.00	15.00	<0.01
Konsolon	DAG0150	349,815	1,303,279	419	90	15.00	12.00	15.00	<0.01
Konsolon	DAG0151	349,521	1,302,886	380	90	10.00	7.00	10.00	<0.01
Konsolon	DAG0152	349,626	1,302,884	385	90	9.00	6.00	9.00	<0.01
Konsolon	DAG0153	349,725	1,302,882	381	90	6.00	3.00	6.00	0.01
Konsolon	DAG0154	349,827	1,302,890	374	90	9.00	6.00	9.00	0.02
Konsolon	DAG0155	349,924	1,302,893	373	90	7.00	4.00	7.00	<0.01
Konsolon	DAG0156	350,025	1,302,886	371	90	10.00	7.00	10.00	<0.01
Konsolon	DAG0158	350,321	1,302,886	375	90	14.00	11.00	14.00	<0.01
Konsolon	DAG0159	350,237	1,302,883	372	90	11.00	8.00	11.00	<0.01
Konsolon	DAG0160	350,420	1,302,887	368	90	6.00	3.00	6.00	0.02
Konsolon	DAG0162	350,519	1,302,488	374	90	5.00	2.00	5.00	<0.01
Konsolon	DAG0163	350,424	1,302,495	376	90	5.00	2.00	5.00	<0.01
Konsolon	DAG0164	350,218	1,302,486	379	90	7.00	4.00	7.00	<0.01
Konsolon	DAG0165	350,319	1,302,486	379	90	5.00	2.00	5.00	0.01
Konsolon	DAG0167	350,821	1,302,483	365	90	8.00	5.00	8.00	0.02
Konsolon	DAG0168	350,920	1,302,482	386	90	5.00	4.00	5.00	0.01
Konsolon	DAG0169	350,716	1,302,482	364	90	7.00	4.00	7.00	0.03
Konsolon	DAG0170	351,016	1,302,482	380	90	7.00	5.00	7.00	<0.01
Konsolon	DAG0171	353,619	1,302,487	434	90	4.00	1.00	4.00	<0.01
Konsolon	DAG0172	353,937	1,302,483	416	90	5.00	2.00	5.00	<0.01
Konsolon	DAG0173	354,120	1,302,480	418	90	7.00	4.00	7.00	0.02
Konsolon	DAG0174	354,024	1,302,488	416	90	6.00	3.00	6.00	0.01
Konsolon	DAG0175	354,424	1,302,487	455	90	15.00	12.00	15.00	0.02
Konsolon	DAG0176	354,515	1,302,488	449	90	11.00	8.00	11.00	0.01
Konsolon	DAG0177	353,625	1,301,689	439	90	13.00	10.00	13.00	<0.01
Konsolon	DAG0178	353,525	1,301,686	440	90	12.00	11.00	12.00	0.01
Konsolon	DAG0179	353,425	1,301,684	442	90	13.00	10.00	13.00	<0.01
Konsolon	DAG0180	353,320	1,301,688	442	90	15.00	13.00	15.00	0.07
Konsolon	DAG0181	353,220	1,301,687	439	90	14.00	11.00	14.00	<0.01
Konsolon	DAG0182	353,124	1,301,687	441	90	14.00	12.00	14.00	0.1
Konsolon	DAG0183	353,023	1,301,683	437	90	14.00	12.00	14.00	0.1
Konsolon	DAG0184	352,920	1,301,686	433	90	15.00	12.00	15.00	<0.01
Konsolon	DAG0185	352,822	1,301,685	430	90	14.00	11.00	14.00	0.37
Konsolon	DAG0186	352,726	1,301,688	427	90	15.00	12.00	15.00	<0.01
Konsolon	DAG0187	352,624	1,301,691	424	90	13.00	12.00	13.00	0.03
Konsolon	DAG0188	352,528	1,301,689	419	90	17.00	14.00	17.00	<0.01
Konsolon	DAG0189	352,417	1,301,691	416	90	13.00	10.00	13.00	0.02
Konsolon	DAG0190	352,323	1,301,686	415	90	14.00	11.00	14.00	0.01
Konsolon	DAG0191	352,121	1,301,690	408	90	14.00	11.00	14.00	0.01
Konsolon	DAG0192	352,014	1,301,698	407	90	11.00	8.00	11.00	<0.01
Konsolon	DAG0193	351,920	1,301,680	394	90	7.00	4.00	7.00	0.01
Konsolon	DAG0194	351,223	1,301,688	381	90	6.00	3.00	6.00	<0.01
Konsolon	DAG0195	351,108	1,301,682	384	90	14.00	11.00	14.00	0.01

Konsolon	DAG0196	351,823	1,301,687	375	90	5.00	3.00	5.00	0.02
Konsolon	DAG0197	351,435	1,301,692	372	90	9.00	7.00	9.00	0.71
Konsolon	DAG0199	351,625	1,301,685	375	90	10.00	4.00	7.00	0.06
Konsolon	DAG0200	351,724	1,301,683	384	90	10.00	7.00	10.00	0.01
Konsolon	DAG0201	352,221	1,301,286	377	90	5.00	3.00	5.00	<0.01
Konsolon	DAG0202	352,325	1,301,287	376	90	5.00	3.00	5.00	<0.01
Konsolon	DAG0203	352,422	1,301,289	381	90	10.00	7.00	10.00	0.01
Konsolon	DAG0204	352,496	1,301,301	378	90	10.00	7.00	10.00	0.02
Konsolon	DAG0205	352,524	1,300,885	381	90	9.00	8.00	9.00	0.01
Konsolon	DAG0206	350,325	1,301,683	435	90	13.00	10.00	13.00	0.02
Konsolon	DAG0207	350,623	1,301,681	445	90	14.00	11.00	14.00	0.01
Konsolon	DAG0208	350,720	1,301,683	445	90	14.00	11.00	14.00	0.01
Konsolon	DAG0209	350,527	1,301,688	437	90	12.00	9.00	12.00	0.01
Konsolon	DAG0210	352,426	1,300,883	379	90	10.00	8.00	10.00	<0.01
Konsolon	DAG0211	350,919	1,301,679	410	90	6.00	3.00	6.00	0.02
Konsolon	DAG0212	353,422	1,301,285	428	90	14.00	11.00	14.00	<0.01
Konsolon	DAG0213	353,327	1,301,279	429	90	16.00	13.00	16.00	0.03
Konsolon	DAG0214	353,222	1,301,283	430	90	17.00	14.00	17.00	0.02
Konsolon	DAG0215	353,122	1,301,284	424	90	16.00	13.00	16.00	0.02
Konsolon	DAG0216	353,022	1,301,286	416	90	15.00	12.00	15.00	0.02
Konsolon	DAG0217	352,726	1,301,283	414	90	21.00	18.00	21.00	0.02
Konsolon	DAG0218	351,926	1,300,885	379	90	9.00	6.00	9.00	0.01
Konsolon	DAG0219	352,026	1,300,885	376	90	9.00	8.00	9.00	0.01
Konsolon	DAG0220	352,123	1,300,883	376	90	10.00	7.00	10.00	0.02
Konsolon	DAG0221	352,225	1,300,885	374	90	5.00	3.00	5.00	0.02
Konsolon	DAG0222	352,326	1,300,885	375	90	9.00	6.00	9.00	0.01
Konsolon	DAG0223	352,423	1,300,491	384	90	10.00	7.00	10.00	<0.01
Konsolon	DAG0224	352,296	1,300,493	398	90	10.00	7.00	10.00	<0.01
Konsolon	DAG0225	352,394	1,300,493	389	90	10.00	8.00	10.00	0.02
Konsolon	DAG0226	352,628	1,301,269	418	90	14.00	11.00	14.00	0.02
Konsolon	DAG0228	353,121	1,300,889	422	90	16.00	13.00	16.00	0.02
Konsolon	DAG0231	352,815	1,300,888	397	90	7.00	4.00	7.00	0.02
Konsolon	DAG0232	352,719	1,300,888	389	90	5.00	3.00	5.00	0.02
Konsolon	DAG0233	352,625	1,300,882	393	90	7.00	4.00	7.00	0.02
Konsolon	DAG0234	351,714	1,300,895	386	90	13.00	12.00	13.00	0.04
Konsolon	DAG0235	351,816	1,300,892	388	90	12.00	9.00	12.00	0.01
Konsolon	DAG0236	352,113	1,304,485	381	90	9.00	7.00	9.00	0.03
Konsolon	DAG0237	352,025	1,304,492	379	90	9.00	7.00	9.00	0.02
Konsolon	DAG0238	351,926	1,304,484	380	90	9.00	6.00	9.00	0.04
Konsolon	DAG0239	351,823	1,304,481	380	90	9.00	6.00	9.00	0.02
Konsolon	DAG0240	351,726	1,304,486	379	90	12.00	10.00	12.00	0.01
Konsolon	DAG0241	351,626	1,304,485	378	90	13.00	10.00	13.00	0.02
Konsolon	DAG0242	351,530	1,304,486	376	90	11.00	9.00	11.00	0.13
Konsolon	DAG0243	351,423	1,304,482	371	90	9.00	6.00	9.00	0.02
Konsolon	DAG0244	351,322	1,304,488	369	90	5.00	3.00	5.00	0.01
Konsolon	DAG0245	351,222	1,304,492	369	90	5.00	3.00	5.00	<0.01
Konsolon	DAG0246	351,226	1,304,889	399	90	5.00	3.00	5.00	0.03
Konsolon	DAG0248	351,424	1,304,842	404	90	7.00	4.00	7.00	0.03
Konsolon	DAG0249	350,927	1,304,490	371	90	7.00	5.00	7.00	0.01
Konsolon	DAG0250	351,125	1,304,879	409	90	6.00	3.00	6.00	0.02
Konsolon	DAG0251	350,822	1,304,883	386	90	6.00	3.00	6.00	0.03
Konsolon	DAG0252	350,725	1,304,884	377	90	8.00	6.00	8.00	0.03
Konsolon	DAG0253	352,015	1,304,876	408	90	8.00	6.00	8.00	0.03
Konsolon	DAG0255	350,722	1,304,486	370	90	7.00	4.00	7.00	0.03
Konsolon	DAG0257	351,026	1,304,882	395	90	11.00	8.00	11.00	0.04
Konsolon	DAG0258	352,129	1,304,876	404	90	4.00	2.00	4.00	0.04
Konsolon	DAG0259	352,122	1,304,881	402	90	5.00	2.00	5.00	0.02
Konsolon	DAG0261	351,757	1,304,870	408	90	4.00	2.00	4.00	0.02
Konsolon	DAG0262	351,849	1,304,860	406	90	8.00	6.00	8.00	0.01
Konsolon	DAG0263	351,515	1,304,870	407	90	9.00	6.00	9.00	0.03
Konsolon	DAG0264	351,615	1,304,852	402	90	7.00	4.00	7.00	0.01
Konsolon	DAG0265	351,917	1,304,877	406	90	4.00	2.00	4.00	0.02
Konsolon	DAG0266	349,324	1,304,491	365	90	8.00	5.00	8.00	0.03
Konsolon	DAG0267	349,226	1,304,483	365	90	7.00	5.00	7.00	0.02

Konsolon	DAG0268	349,128	1,304,481	368	90	9.00	6.00	9.00	<0.01	
Konsolon	DAG0269	349,026	1,304,487	363	90	7.00	5.00	7.00		0.01
Konsolon	DAG0270	348,921	1,304,881	380	90	11.00	9.00	11.00	<0.01	
Konsolon	DAG0271	348,923	1,304,489	369	90	6.00	3.00	6.00	<0.01	
Konsolon	DAG0272	348,820	1,304,487	372	90	7.00	4.00	7.00		0.02
Konsolon	DAG0273	348,722	1,304,486	375	90	8.00	5.00	8.00	<0.01	
Konsolon	DAG0274	349,024	1,304,885	371	90	10.00	7.00	10.00	<0.01	
Konsolon	DAG0275	348,424	1,305,283	378	90	7.00	4.00	7.00	<0.01	
Konsolon	DAG0276	348,522	1,305,290	377	90	10.00	7.00	10.00	<0.01	
Konsolon	DAG0277	348,621	1,305,286	374	90	17.00	14.00	17.00	<0.01	
Konsolon	DAG0278	348,722	1,305,283	367	90	14.00	11.00	14.00	<0.01	
Konsolon	DAG0279	348,820	1,305,288	365	90	13.00	11.00	13.00	<0.01	
Konsolon	DAG0280	351,126	1,307,486	387	90	6.00	4.00	6.00	<0.01	
Konsolon	DAG0281	351,023	1,307,489	378	90	10.00	7.00	10.00	<0.01	
Konsolon	DAG0282	350,525	1,307,888	365	90	7.00	5.00	7.00	<0.01	
Konsolon	DAG0283	350,623	1,307,892	366	90	8.00	5.00	8.00	<0.01	
Konsolon	DAG0284	350,824	1,307,891	387	90	10.00	8.00	10.00		0.01
Konsolon	DAG0285	350,931	1,307,888	378	90	8.00	6.00	8.00	<0.01	
Konsolon	DAG0286	351,024	1,307,889	377	90	7.00	5.00	7.00		0.01
Konsolon	DAG0287	351,625	1,307,881	380	90	7.00	4.00	7.00	<0.01	
Konsolon	DAG0288	351,721	1,307,888	382	90	14.00	11.00	14.00	<0.01	
Konsolon	DAG0289	351,818	1,307,887	382	90	5.00	3.00	5.00	<0.01	
Konsolon	DAG0290	351,922	1,307,888	382	90	8.00	6.00	8.00	<0.01	
Konsolon	DAG0291	351,284	1,307,484	407	90	11.00	8.00	11.00	<0.01	
Konsolon	DAG0292	351,226	1,307,488	395	90	8.00	5.00	8.00	<0.01	
Konsolon	DAG0293	351,120	1,307,887	372	90	11.00	8.00	11.00		0.01
Konsolon	DAG0294	351,223	1,307,890	373	90	11.00	8.00	11.00	<0.01	
Konsolon	DAG0295	351,320	1,307,881	374	90	11.00	8.00	11.00	<0.01	
Konsolon	DAG0296	351,423	1,307,886	377	90	8.00	5.00	8.00	<0.01	
Konsolon	DAG0297	351,519	1,307,888	380	90	10.00	7.00	10.00	<0.01	
Konsolon	DAG0298	352,219	1,307,887	374	90	7.00	4.00	7.00	<0.01	
Konsolon	DAG0299	352,523	1,307,886	380	90	5.00	3.00	5.00	<0.01	
Konsolon	DAG0300	352,020	1,307,886	376	90	8.00	5.00	8.00	<0.01	
Konsolon	DAG0301	352,120	1,307,888	376	90	8.00	6.00	8.00	<0.01	
Konsolon	DAG0302	352,323	1,307,886	367	90	4.00	2.00	4.00		0.03
Konsolon	DAG0303	352,425	1,307,878	368	90	3.00	1.00	3.00	<0.01	
Konsolon	DAG0304	352,621	1,307,886	375	90	8.00	5.00	8.00	<0.01	
Konsolon	DAG0305	352,824	1,307,884	402	90	4.00	2.00	4.00	<0.01	
Konsolon	DAG0306	352,708	1,307,882	386	90	3.00	2.00	3.00	<0.01	
Konsolon	DAG0307	352,879	1,307,885	415	90	5.00	2.00	5.00	<0.01	
Konsolon	DAG0308	352,425	1,307,486	366	90	4.00	2.00	4.00	<0.01	
Konsolon	DAG0309	352,521	1,307,484	373	90	5.00	3.00	5.00		0.02
Konsolon	DAG0310	352,620	1,307,494	389	90	5.00	2.00	5.00		0.02
Konsolon	DAG0311	352,723	1,307,489	398	90	5.00	2.00	5.00	<0.01	
Konsolon	DAG0312	352,795	1,307,513	396	90	3.00	1.00	3.00	<0.01	
Konsolon	DAG0313	352,322	1,307,490	273	90	6.00	4.00	6.00		0.02
Konsolon	DAG0314	352,226	1,307,481	384	90	8.00	6.00	8.00	<0.01	
Konsolon	DAG0315	352,126	1,307,489	388	90	8.00	5.00	8.00	<0.01	
Konsolon	DAG0316	352,025	1,307,488	391	90	9.00	6.00	9.00		0.08
Konsolon	DAG0317	351,926	1,307,490	402	90	9.00	6.00	9.00		0.02
Konsolon	DAG0318	351,826	1,307,487	408	90	10.00	7.00	10.00	<0.01	
Konsolon	DAG0319	351,738	1,307,498	406	90	8.00	5.00	8.00	<0.01	
Konsolon	DAG0320	351,666	1,307,497	391	90	8.00	5.00	8.00	<0.01	
Konsolon	DAG0321	351,923	1,308,288	365	90	6.00	3.00	6.00	<0.01	
Konsolon	DAG0322	351,838	1,308,291	369	90	7.00	5.00	7.00	<0.01	
Konsolon	DAG0323	351,723	1,308,288	370	90	7.00	4.00	7.00		0.01
Konsolon	DAG0324	351,629	1,308,262	358	90	6.00	4.00	6.00		0.01
Konsolon	DAG0325	351,524	1,308,283	370	90	9.00	6.00	9.00		0.02
Konsolon	DAG0326	351,419	1,308,285	369	90	7.00	4.00	7.00		0.03
Konsolon	DAG0327	351,322	1,308,286	372	90	10.00	7.00	10.00		0.02
Konsolon	DAG0328	351,225	1,308,283	362	90	8.00	5.00	8.00		0.02
Konsolon	DAG0329	351,123	1,308,290	350	90	7.00	5.00	7.00	<0.01	
Konsolon	DAG0330	351,012	1,308,271	359	90	9.00	6.00	9.00	<0.01	
Konsolon	DAG0332	350,621	1,308,277	369	90	8.00	5.00	8.00	<0.01	

Konsolon	DAG0333	350,726	1,308,286	379	90	10.00	7.00	10.00	0.02
Konsolon	DAG0334	350,823	1,308,286	365	90	8.00	5.00	8.00	0.08
Konsolon	DAG0335	350,922	1,308,280	364	90	10.00	2.00	4.00	0.07
Konsolon	DAG0335	350,922	1,308,280	364	90	10.00	7.00	10.00	<0.01
Konsolon	DAG0336	350,822	1,308,683	355	90	3.00	2.00	3.00	0.05
Konsolon	DAG0338	351,821	1,308,682	379	90	8.00	5.00	8.00	<0.01
Konsolon	DAG0339	351,918	1,308,686	373	90	9.00	6.00	9.00	<0.01
Konsolon	DAG0340	350,914	1,308,687	362	90	9.00	6.00	9.00	0.04
Konsolon	DAG0341	352,022	1,308,685	368	90	7.00	4.00	7.00	<0.01
Konsolon	DAG0342	352,125	1,308,689	369	90	8.00	5.00	8.00	<0.01
Konsolon	DAG0343	352,228	1,308,691	364	90	11.00	8.00	11.00	<0.01
Konsolon	DAG0344	352,256	1,308,688	366	90	9.00	7.00	9.00	<0.01
Konsolon	DAG0345	351,028	1,308,671	337	90	7.00	4.00	7.00	0.01
Konsolon	DAG0346	351,126	1,308,683	367	90	9.00	1.00	4.00	<0.01
Konsolon	DAG0346	351,126	1,308,683	367	90	9.00	6.00	9.00	<0.01
Konsolon	DAG0347	351,220	1,308,681	380	90	8.00	5.00	8.00	<0.01
Konsolon	DAG0348	351,319	1,308,690	382	90	7.00	4.00	7.00	0.02
Konsolon	DAG0349	351,724	1,308,684	377	90	5.00	2.00	5.00	<0.01
Konsolon	DAG0350	351,622	1,308,685	378	90	7.00	4.00	7.00	<0.01
Konsolon	DAG0351	351,524	1,308,680	377	90	6.00	3.00	6.00	<0.01
Konsolon	DAG0352	351,422	1,308,692	380	90	7.00	4.00	7.00	<0.01
Konsolon	DAG0353	352,273	1,309,087	365	90	12.00	10.00	12.00	0.03
Konsolon	DAG0354	352,216	1,309,087	366	90	11.00	8.00	11.00	<0.01
Konsolon	DAG0355	352,119	1,309,088	365	90	7.00	4.00	7.00	<0.01
Konsolon	DAG0356	352,023	1,309,088	368	90	6.00	3.00	6.00	<0.01
Konsolon	DAG0357	351,925	1,309,087	371	90	6.00	4.00	6.00	<0.01
Konsolon	DAG0358	351,829	1,309,086	374	90	5.00	2.00	5.00	<0.01
Konsolon	DAG0359	351,727	1,309,081	380	90	6.00	3.00	6.00	<0.01
Konsolon	DAG0360	351,047	1,309,088	366	90	7.00	4.00	7.00	0.01
Konsolon	DAG0361	351,132	1,309,080	372	90	7.00	4.00	7.00	<0.01
Konsolon	DAG0362	351,244	1,309,070	376	90	6.00	3.00	6.00	<0.01
Konsolon	DAG0363	351,333	1,309,097	374	90	7.00	4.00	7.00	<0.01
Konsolon	DAG0364	351,436	1,309,102	375	90	7.00	4.00	7.00	<0.01
Konsolon	DAG0365	351,524	1,309,090	379	90	6.00	3.00	6.00	<0.01
Konsolon	DAG0366	351,627	1,302,068	386	90	5.00	2.00	5.00	0.01
Konsolon	DAG0367	352,123	1,308,287	374	90	6.00	3.00	6.00	<0.01
Konsolon	DAG0368	352,022	1,308,284	373	90	5.00	2.00	5.00	<0.01
Konsolon	DAG0369	352,097	1,300,495	414	90	16.00	13.00	16.00	<0.01
Konsolon	DAG0370	351,998	1,300,487	424	90	15.00	12.00	15.00	<0.01
Konsolon	DAG0371	351,903	1,300,488	423	90	14.00	11.00	14.00	<0.01
Konsolon	DAG0372	351,797	1,300,491	426	90	19.00	16.00	19.00	<0.01
Konsolon	DAG0373	351,693	1,300,492	426	90	18.00	15.00	18.00	<0.01
Konsolon	DAG0374	351,191	1,300,493	422	90	19.00	2.00	5.00	<0.01
Konsolon	DAG0374	351,191	1,300,493	422	90	19.00	17.00	19.00	0.06
Konsolon	DAG0375	351,150	1,300,474	432	90	15.00	12.00	15.00	0.01
Konsolon	DAG0376	351,299	1,300,488	435	90	14.00	11.00	14.00	<0.01
Konsolon	DAG0377	351,397	1,300,491	431	90	13.00	11.00	13.00	<0.01
Konsolon	DAG0378	351,495	1,300,492	423	90	16.00	13.00	16.00	<0.01
Konsolon	DAG0379	351,597	1,300,499	424	90	17.00	14.00	17.00	<0.01
Konsolon	DAG0380	351,410	1,300,126	450	90	13.00	10.00	13.00	<0.01
Konsolon	DAG0381	351,481	1,300,106	450	90	13.00	11.00	13.00	<0.01
Konsolon	DAG0382	351,992	1,300,094	435	90	10.00	8.00	10.00	<0.01
Konsolon	DAG0383	351,591	1,300,095	447	90	9.00	2.00	5.00	<0.01
Konsolon	DAG0383	351,591	1,300,095	447	90	9.00	6.00	9.00	0.03
Konsolon	DAG0384	351,695	1,300,094	447	90	8.00	5.00	8.00	<0.01
Konsolon	DAG0385	351,793	1,300,091	436	90	10.00	7.00	10.00	0.01
Konsolon	DAG0386	351,889	1,300,089	439	90	11.00	8.00	11.00	<0.01
Konsolon	DAG0387	352,089	1,300,092	432	90	17.00	14.00	17.00	<0.01
Konsolon	DAG0389	352,296	1,300,094	418	90	14.00	13.00	14.00	0.01
Konsolon	DAG0390	352,393	1,300,095	419	90	14.00	13.00	14.00	<0.01
Konsolon	DAG0391	352,422	1,300,092	416	90	17.00	14.00	17.00	0.01
Konsolon	DAG0392	353,925	1,300,487	432	90	19.00	16.00	19.00	0.06
Konsolon	DAG0393	354,024	1,300,491	445	90	17.00	14.00	17.00	0.02
Konsolon	DAG0394	354,120	1,300,488	433	90	18.00	15.00	18.00	<0.01

Konsolon	DAG0395	354,220	1,300,479	438	90	15.00	1.00	4.00	<0.01	
Konsolon	DAG0395	354,220	1,300,479	438	90	15.00	13.00	15.00		0.14
Konsolon	DAG0396	354,323	1,300,490	435	90	16.00	1.00	4.00		0.02
Konsolon	DAG0396	354,323	1,300,490	435	90	16.00	13.00	16.00		0.02
Konsolon	DAG0397	354,417	1,300,498	428	90	18.00	15.00	18.00		0.02
Konsolon	DAG0398	356,120	1,300,088	409	90	13.00	1.00	4.00		0.05
Konsolon	DAG0398	356,120	1,300,088	409	90	13.00	10.00	13.00		0.01
Konsolon	DAG0399	356,022	1,300,091	412	90	13.00	2.00	5.00		0.06
Konsolon	DAG0399	356,022	1,300,091	412	90	13.00	10.00	13.00		0.01
Konsolon	DAG0400	354,722	1,300,484	423	90	16.00	15.00	16.00	<0.01	
Konsolon	DAG0401	354,821	1,300,480	421	90	11.00	9.00	11.00		0.02
Konsolon	DAG0402	354,928	1,300,477	425	90	9.00	6.00	9.00	<0.01	
Konsolon	DAG0403	355,020	1,300,484	421	90	12.00	9.00	12.00	<0.01	
Konsolon	DAG0404	355,123	1,300,483	422	90	16.00	13.00	16.00	<0.01	
Konsolon	DAG0405	354,621	1,300,488	421	90	13.00	11.00	13.00	<0.01	
Konsolon	DAG0406	354,522	1,300,488	422	90	16.00	13.00	16.00		0.02
Konsolon	DAG0407	355,922	1,300,092	411	90	12.00	2.00	5.00	<0.01	
Konsolon	DAG0407	355,922	1,300,092	411	90	12.00	9.00	12.00	<0.01	
Konsolon	DAG0408	355,821	1,300,088	421	90	8.00	1.00	4.00	<0.01	
Konsolon	DAG0409	355,623	1,300,090	421	90	14.00	11.00	14.00	<0.01	
Konsolon	DAG0410	355,721	1,300,086	417	90	15.00	14.00	15.00		0.01
Konsolon	DAG0411	355,524	1,300,083	416	90	18.00	15.00	18.00	<0.01	
Konsolon	DAG0412	354,426	1,300,089	420	90	13.00	12.00	13.00	<0.01	
Konsolon	DAG0413	355,424	1,300,087	421	90	15.00	14.00	15.00		0.02
Konsolon	DAG0414	355,317	1,300,083	428	90	16.00	13.00	16.00		0.01
Konsolon	DAG0415	355,226	1,300,091	423	90	13.00	11.00	13.00	<0.01	
Konsolon	DAG0416	355,125	1,300,089	425	90	16.00	13.00	16.00		0.02
Konsolon	DAG0417	355,020	1,300,086	423	90	12.00	10.00	12.00		0.01
Konsolon	DAG0418	354,924	1,300,087	421	90	13.00	12.00	13.00	<0.01	
Konsolon	DAG0419	354,820	1,300,088	421	90	16.00	13.00	16.00	<0.01	
Konsolon	DAG0420	354,724	1,300,087	415	90	13.00	10.00	13.00	<0.01	
Konsolon	DAG0421	354,616	1,300,098	416	90	13.00	10.00	13.00	<0.01	
Konsolon	DAG0422	354,519	1,300,087	414	90	12.00	10.00	12.00	<0.01	
Konsolon	DAG0423	355,251	1,298,301	400	90	9.00	6.00	9.00	<0.01	
Konsolon	DAG0424	355,339	1,298,305	401	90	13.00	10.00	13.00		0.01
Konsolon	DAG0425	355,446	1,298,307	408	90	12.00	9.00	12.00	<0.01	
Konsolon	DAG0426	355,544	1,298,304	418	90	14.00	13.00	14.00	<0.01	
Konsolon	DAG0427	355,641	1,298,299	428	90	13.00	12.00	13.00	<0.01	
Konsolon	DAG0430	355,949	1,298,289	438	90	15.00	14.00	15.00	<0.01	
Konsolon	DAG0431	356,051	1,298,297	432	90	12.00	9.00	12.00	<0.01	
Konsolon	DAG0432	356,151	1,298,290	433	90	13.00	12.00	13.00	<0.01	
Konsolon	DAG0433	356,212	1,298,290	431	90	14.00	12.00	14.00	<0.01	
Konsolon	DAG0434	354,621	1,297,089	400	90	10.00	8.00	10.00	<0.01	
Konsolon	DAG0435	354,522	1,297,089	401	90	8.00	6.00	8.00		0.01
Konsolon	DAG0436	354,422	1,297,085	402	90	10.00	8.00	10.00	<0.01	
Konsolon	DAG0437	354,323	1,297,087	405	90	8.00	6.00	8.00	<0.01	
Konsolon	DAG0438	354,221	1,297,085	405	90	10.00	7.00	10.00	<0.01	
Konsolon	DAG0439	354,119	1,297,084	410	90	9.00	7.00	9.00	<0.01	
Konsolon	DAG0440	354,019	1,297,089	414	90	11.00	8.00	11.00	<0.01	
Konsolon	DAG0441	353,927	1,297,088	411	90	10.00	7.00	10.00	<0.01	
Konsolon	DAG0442	351,124	1,296,685	417	90	12.00	9.00	12.00		0.01
Konsolon	DAG0443	351,022	1,296,687	419	90	11.00	9.00	11.00		0.02
Konsolon	DAG0444	350,925	1,296,686	419	90	11.00	8.00	11.00	<0.01	
Konsolon	DAG0445	350,824	1,296,676	422	90	7.00	4.00	7.00		0.03
Konsolon	DAG0446	350,725	1,296,685	421	90	9.00	8.00	9.00	<0.01	
Konsolon	DAG0447	350,624	1,296,685	423	90	9.00	7.00	9.00		0.01
Konsolon	DAG0448	351,120	1,297,479	436	90	10.00	7.00	10.00	<0.01	
Konsolon	DAG0449	351,026	1,297,483	432	90	11.00	9.00	11.00	<0.01	
Konsolon	DAG0450	350,925	1,297,488	431	90	11.00	8.00	11.00	<0.01	
Konsolon	DAG0451	350,821	1,297,487	430	90	11.00	9.00	11.00	<0.01	
Konsolon	DAG0452	350,720	1,297,484	432	90	14.00	11.00	14.00		0.2
Konsolon	DAG0453	350,623	1,297,483	434	90	11.00	10.00	11.00	<0.01	
Konsolon	DAG0454	350,171	1,299,103	414	90	5.00	2.00	5.00	<0.01	
Konsolon	DAG0455	350,097	1,299,098	406	90	8.00	5.00	8.00	<0.01	

Konsolon	DAG0456	349,992	1,299,100	405	90	6.00	4.00	6.00	0.02
Konsolon	DAG0457	349,903	1,299,099	398	90	5.00	2.00	5.00	<0.01
Konsolon	DAG0458	349,796	1,299,102	403	90	6.00	3.00	6.00	<0.01
Konsolon	DAG0459	349,694	1,299,082	405	90	4.00	1.00	4.00	<0.01
Konsolon	DAG0460	349,597	1,299,104	412	90	3.00	1.00	3.00	<0.01
Konsolon	DAG0461	354,949	1,299,107	412	90	5.00	2.00	5.00	<0.01
Konsolon	DAG0462	354,027	1,297,888	423	90	6.00	3.00	6.00	0.01
Konsolon	DAG0463	353,927	1,297,887	423	90	6.00	4.00	6.00	<0.01
Konsolon	DAG0464	353,825	1,297,891	422	90	7.00	4.00	7.00	<0.01
Konsolon	DAG0465	353,723	1,297,882	437	90	4.00	2.00	4.00	<0.01
Konsolon	DAG0466	353,624	1,297,892	442	90	5.00	2.00	5.00	<0.01
Konsolon	DAG0467	353,534	1,297,871	454	90	7.00	4.00	7.00	<0.01
Konsolon	DAG0468	353,424	1,297,888	445	90	9.00	6.00	9.00	<0.01
Konsolon	DAG0469	348,824	1,304,886	388	90	9.00	6.00	9.00	<0.01
Konsolon	DAG0470	348,723	1,304,885	383	90	10.00	7.00	10.00	<0.01
Konsolon	DAG0471	348,625	1,304,887	389	90	11.00	9.00	11.00	<0.01
Fadougou	FAG0001	423,609	1,197,997	422	90	10.00	7.00	10.00	0.01
Fadougou	FAG0002	423,697	1,197,996	402	90	9.00	7.00	9.00	<0.01
Fadougou	FAG0003	423,801	1,198,003	404	90	12.00	10.00	12.00	<0.01
Fadougou	FAG0004	423,897	1,197,997	399	90	8.00	6.00	8.00	0.02
Fadougou	FAG0005	423,994	1,198,000	399	90	7.00	4.00	7.00	0.02
Fadougou	FAG0006	424,097	1,198,001	395	90	7.00	5.00	7.00	<0.01
Fadougou	FAG0007	424,190	1,198,013	403	90	11.00	8.00	11.00	0.01
Fadougou	FAG0008	424,304	1,198,002	397	90	7.00	6.00	7.00	0.02
Fadougou	FAG0009	423,999	1,198,406	413	90	12.00	10.00	12.00	0.06
Fadougou	FAG0010	423,901	1,198,395	413	90	9.00	8.00	9.00	0.01
Fadougou	FAG0011	423,798	1,198,410	419	90	11.00	9.00	11.00	<0.01
Fadougou	FAG0012	423,704	1,198,401	418	90	10.00	9.00	10.00	0.01
Fadougou	FAG0013	423,601	1,198,398	422	90	13.00	10.00	13.00	<0.01
Fadougou	FAG0014	423,504	1,198,387	416	90	8.00	5.00	8.00	0.02
Fadougou	FAG0015	423,401	1,198,403	420	90	8.00	7.00	8.00	<0.01
Fadougou	FAG0016	423,303	1,198,407	418	90	11.00	9.00	11.00	<0.01
Fadougou	FAG0017	423,199	1,198,390	420	90	11.00	8.00	11.00	0.02
Fadougou	FAG0018	423,103	1,198,398	427	90	8.00	5.00	8.00	0.01
Fadougou	FAG0019	422,999	1,198,405	426	90	7.00	4.00	7.00	0.01
Fadougou	FAG0020	422,903	1,198,399	422	90	9.00	5.00	9.00	0.02
Fadougou	FAG0021	422,799	1,198,398	386	90	11.00	10.00	11.00	<0.01
Fadougou	FAG0022	422,705	1,198,396	414	90	10.00	8.00	10.00	<0.01
Fadougou	FAG0023	422,396	1,198,807	410	90	11.00	9.00	11.00	0.01
Fadougou	FAG0024	422,500	1,198,803	410	90	12.00	8.00	12.00	0.01
Fadougou	FAG0025	422,594	1,198,799	412	90	11.00	9.00	11.00	0.04
Fadougou	FAG0026	422,700	1,198,804	406	90	8.00	6.00	8.00	0.01
Fadougou	FAG0027	422,802	1,198,805	412	90	9.00	7.00	9.00	<0.01
Fadougou	FAG0028	422,902	1,198,803	410	90	9.00	6.00	9.00	0.01
Fadougou	FAG0029	423,001	1,198,800	415	90	10.00	8.00	10.00	<0.01
Fadougou	FAG0030	423,095	1,198,795	420	90	8.00	6.00	8.00	0.04
Fadougou	FAG0031	423,201	1,198,801	409	90	7.00	6.00	7.00	<0.01
Fadougou	FAG0032	423,299	1,198,799	413	90	9.00	8.00	9.00	<0.01
Fadougou	FAG0033	423,400	1,198,802	422	90	10.00	7.00	10.00	<0.01
Fadougou	FAG0034	423,497	1,198,801	415	90	10.00	8.00	10.00	<0.01
Fadougou	FAG0035	423,596	1,198,805	420	90	13.00	9.00	13.00	0.01
Fadougou	FAG0036	423,697	1,198,799	411	90	11.00	9.00	11.00	0.02
Fadougou	FAG0037	422,101	1,199,195	400	90	8.00	5.00	8.00	0.02
Fadougou	FAG0038	422,202	1,199,199	395	90	9.00	8.00	9.00	0.02
Fadougou	FAG0039	422,301	1,199,200	401	90	10.00	8.00	10.00	0.02
Fadougou	FAG0040	422,402	1,199,197	403	90	8.00	7.00	8.00	0.03
Fadougou	FAG0041	422,498	1,199,202	398	90	10.00	6.00	10.00	0.03
Fadougou	FAG0042	422,597	1,199,197	422	90	9.00	7.00	9.00	0.02
Fadougou	FAG0043	422,697	1,199,202	399	90	9.00	8.00	9.00	<0.01
Fadougou	FAG0044	422,796	1,199,204	403	90	10.00	8.00	10.00	0.02
Fadougou	FAG0045	422,898	1,199,200	406	90	8.00	6.00	8.00	0.01
Fadougou	FAG0046	423,002	1,199,200	403	90	11.00	9.00	11.00	0.02
Fadougou	FAG0047	423,091	1,199,204	398	90	9.00	8.00	9.00	0.02
Fadougou	FAG0048	423,198	1,199,209	400	90	9.00	5.00	9.00	<0.01

Fadougou	FAG0049	423,302	1,199,201	399	90	12.00	9.00	12.00	0.01
Fadougou	FAG0050	423,401	1,199,201	394	90	11.00	10.00	11.00	<0.01
Fadougou	FAG0051	423,496	1,199,189	398	90	9.00	6.00	9.00	<0.01
Fadougou	FAG0052	424,196	1,199,194	409	90	11.00	7.00	11.00	<0.01
Fadougou	FAG0053	424,301	1,199,193	409	90	12.00	10.00	12.00	0.03
Fadougou	FAG0054	424,396	1,199,203	407	90	13.00	11.00	13.00	0.02
Fadougou	FAG0055	424,493	1,199,198	411	90	11.00	9.00	11.00	0.03
Fadougou	FAG0056	424,599	1,199,201	415	90	11.00	8.00	11.00	<0.01
Fadougou	FAG0057	424,696	1,199,197	406	90	11.00	9.00	11.00	<0.01
Fadougou	FAG0058	424,703	1,199,593	396	90	11.00	7.00	11.00	0.02
Fadougou	FAG0059	424,606	1,199,599	401	90	10.00	7.00	10.00	0.01
Fadougou	FAG0060	424,502	1,199,603	400	90	12.00	6.00	12.00	<0.01
Fadougou	FAG0061	424,406	1,199,597	402	90	9.00	5.00	9.00	<0.01
Fadougou	FAG0062	424,295	1,199,597	391	90	7.00	4.00	7.00	<0.01
Fadougou	FAG0063	424,211	1,199,597	367	90	9.00	6.00	9.00	<0.01
Fadougou	FAG0064	424,103	1,199,596	388	90	9.00	6.00	9.00	<0.01
Fadougou	FAG0065	424,001	1,199,600	384	90	11.00	9.00	11.00	0.02
Fadougou	FAG0066	423,200	1,199,600	411	90	10.00	7.00	10.00	<0.01
Fadougou	FAG0067	423,098	1,199,600	398	90	10.00	6.00	10.00	0.02
Fadougou	FAG0068	422,998	1,199,598	395	90	7.00	5.00	7.00	0.02
Fadougou	FAG0069	422,902	1,199,604	393	90	9.00	6.00	9.00	<0.01
Fadougou	FAG0070	422,803	1,199,603	393	90	10.00	7.00	10.00	0.01
Fadougou	FAG0071	422,708	1,199,598	389	90	9.00	6.00	9.00	<0.01
Fadougou	FAG0072	422,609	1,199,596	390	90	9.00	7.00	9.00	0.02
Fadougou	FAG0073	422,491	1,199,597	390	90	8.00	6.00	8.00	0.01
Fadougou	FAG0074	422,401	1,199,592	391	90	10.00	9.00	10.00	0.02
Fadougou	FAG0075	421,805	1,199,592	388	90	7.00	6.00	7.00	<0.01
Fadougou	FAG0076	421,900	1,199,603	387	90	9.00	6.00	9.00	<0.01
Fadougou	FAG0077	421,999	1,199,603	389	90	7.00	3.00	7.00	<0.01
Fadougou	FAG0078	422,099	1,199,606	395	90	9.00	7.00	9.00	0.03
Fadougou	FAG0079	422,203	1,199,599	395	90	11.00	8.00	11.00	<0.01
Fadougou	FAG0080	422,295	1,199,613	398	90	10.00	6.00	10.00	0.01
Fadougou	FAG0081	421,503	1,200,000	388	90	10.00	6.00	10.00	0.01
Fadougou	FAG0082	421,595	1,199,999	395	90	11.00	9.00	11.00	0.03
Fadougou	FAG0083	421,690	1,199,996	392	90	11.00	7.00	11.00	<0.01
Fadougou	FAG0084	421,797	1,200,001	395	90	11.00	8.00	11.00	<0.01
Fadougou	FAG0085	421,900	1,200,000	396	90	10.00	7.00	10.00	<0.01
Fadougou	FAG0086	422,002	1,200,000	417	90	9.00	7.00	9.00	<0.01
Fadougou	FAG0087	422,098	1,200,009	397	90	10.00	8.00	10.00	<0.01
Fadougou	FAG0088	422,203	1,199,986	406	90	10.00	8.00	10.00	0.02
Fadougou	FAG0089	422,291	1,199,997	408	90	11.00	10.00	11.00	0.02
Fadougou	FAG0090	422,397	1,200,001	403	90	9.00	8.00	9.00	0.01
Fadougou	FAG0091	422,500	1,199,997	401	90	12.00	8.00	12.00	0.02
Fadougou	FAG0092	422,598	1,199,995	398	90	12.00	9.00	12.00	<0.01
Fadougou	FAG0093	422,697	1,199,998	395	90	10.00	7.00	10.00	<0.01
Fadougou	FAG0094	422,798	1,200,003	391	90	9.00	7.00	9.00	0.01
Fadougou	FAG0095	422,896	1,199,996	395	90	12.00	10.00	12.00	0.08
Fadougou	FAG0096	423,796	1,199,997	391	90	9.00	6.00	9.00	<0.01
Fadougou	FAG0097	423,896	1,200,006	389	90	11.00	7.00	11.00	0.02
Fadougou	FAG0098	423,998	1,200,002	388	90	10.00	7.00	10.00	<0.01
Fadougou	FAG0099	424,101	1,199,997	387	90	8.00	5.00	8.00	0.02
Fadougou	FAG0100	424,199	1,200,001	380	90	9.00	6.00	9.00	<0.01
Fadougou	FAG0101	424,308	1,200,006	381	90	11.00	7.00	10.00	0.01
Fadougou	FAG0102	424,395	1,199,996	381	90	9.00	6.00	9.00	<0.01
Fadougou	FAG0103	424,499	1,200,000	384	90	11.00	7.00	10.00	<0.01
Fadougou	FAG0104	424,601	1,200,005	384	90	9.00	6.00	9.00	0.03
Fadougou	FAG0105	421,206	1,200,394	402	90	13.00	6.00	9.00	0.07
Fadougou	FAG0106	421,301	1,200,400	406	90	11.00	6.00	9.00	0.02
Fadougou	FAG0107	421,387	1,200,410	407	90	10.00	7.00	10.00	0.01
Fadougou	FAG0108	421,497	1,200,401	412	90	13.00	10.00	13.00	<0.01
Fadougou	FAG0109	421,598	1,200,398	419	90	14.00	8.00	11.00	<0.01
Fadougou	FAG0110	421,695	1,200,398	421	90	13.00	8.00	11.00	<0.01
Fadougou	FAG0111	421,798	1,200,399	412	90	11.00	8.00	11.00	<0.01
Fadougou	FAG0112	421,897	1,200,409	414	90	13.00	7.00	10.00	0.02

Fadougou	FAG0113	422,000	1,200,398	413	90	10.00	6.00	9.00	<0.01	
Fadougou	FAG0114	422,096	1,200,399	409	90	9.00	6.00	9.00		0.01
Fadougou	FAG0115	422,201	1,200,405	413	90	14.00	6.00	9.00	<0.01	
Fadougou	FAG0116	422,312	1,200,408	384	90	12.00	6.00	9.00		0.03
Fadougou	FAG0117	422,398	1,200,398	409	90	11.00	8.00	11.00		0.04
Fadougou	FAG0118	422,505	1,200,402	410	90	11.00	8.00	11.00	<0.01	
Fadougou	FAG0119	422,601	1,200,397	408	90	10.00	7.00	10.00		0.01
Fadougou	FAG0121	422,297	1,201,193	395	90	9.00	6.00	9.00	<0.01	
Fadougou	FAG0122	422,399	1,201,193	383	90	10.00	6.00	9.00		0.02
Fadougou	FAG0123	422,505	1,201,205	393	90	12.00	6.00	9.00	<0.01	
Fadougou	FAG0124	422,601	1,201,193	394	90	6.00	3.00	6.00	<0.01	
Fadougou	FAG0125	422,710	1,201,207	402	90	9.00	4.00	7.00	<0.01	
Fadougou	FAG0126	422,800	1,201,199	395	90	8.00	5.00	8.00	<0.01	
Fadougou	FAG0127	422,891	1,201,200	393	90	12.00	6.00	9.00	<0.01	
Fadougou	FAG0128	423,002	1,201,204	393	90	10.00	4.00	7.00	<0.01	
Fadougou	FAG0129	423,099	1,201,197	404	90	13.00	7.00	10.00	<0.01	
Fadougou	FAG0130	423,200	1,201,208	407	90	13.00	6.00	9.00	<0.01	
Fadougou	FAG0131	423,300	1,201,206	402	90	8.00	5.00	8.00		0.01
Fadougou	FAG0132	423,401	1,201,201	403	90	8.00	5.00	8.00		0.01
Fadougou	FAG0133	423,494	1,201,201	404	90	13.00	9.00	12.00	<0.01	
Fadougou	FAG0134	423,600	1,201,204	400	90	10.00	7.00	10.00	<0.01	
Fadougou	FAG0135	423,692	1,201,206	402	90	10.00	6.00	9.00	<0.01	
Fadougou	FAG0136	423,803	1,201,203	395	90	10.00	6.00	9.00	<0.01	
Fadougou	FAG0137	423,903	1,201,205	395	90	11.00	6.00	9.00	<0.01	
Fadougou	FAG0138	424,000	1,201,196	398	90	10.00	7.00	10.00	<0.01	
Fadougou	FAG0139	423,606	1,200,802	413	90	11.00	7.00	10.00	<0.01	
Fadougou	FAG0140	423,704	1,200,804	410	90	10.00	6.00	9.00	<0.01	
Fadougou	FAG0141	423,789	1,200,803	420	90	11.00	6.00	9.00	<0.01	
Fadougou	FAG0142	423,891	1,200,798	417	90	11.00	6.00	9.00	<0.01	
Fadougou	FAG0143	424,000	1,200,806	416	90	11.00	7.00	10.00		0.02
Fadougou	FAG0144	424,100	1,200,804	396	90	8.00	5.00	8.00		0.01
Fadougou	FAG0145	424,203	1,200,806	400	90	11.00	5.00	8.00		0.01
Fadougou	FAG0146	423,954	1,200,278	383	90	12.00	5.00	8.00	<0.01	
Fadougou	FAG0147	424,395	1,200,799	397	90	13.00	7.00	10.00	<0.01	
Fadougou	FAG0148	424,403	1,200,413	407	90	10.00	7.00	10.00		0.01
Fadougou	FAG0149	424,506	1,200,394	406	90	12.00	7.00	10.00	<0.01	
Fadougou	FAG0150	424,593	1,200,398	401	90	11.00	8.00	11.00	<0.01	
Fadougou	FAG0151	424,696	1,200,407	395	90	11.00	5.00	8.00	<0.01	
Fadougou	FAG0152	424,304	1,200,398	400	90	13.00	8.00	11.00	<0.01	
Fadougou	FAG0153	424,203	1,200,402	403	90	12.00	8.00	11.00	<0.01	
Fadougou	FAG0154	424,104	1,200,403	401	90	11.00	8.00	11.00	<0.01	
Fadougou	FAG0155	424,007	1,200,402	404	90	10.00	7.00	10.00		0.03
Fadougou	FAG0156	423,926	1,200,410	407	90	13.00	7.00	10.00	<0.01	
Fadougou	FAG0157	423,809	1,200,406	403	90	10.00	6.00	9.00	<0.01	
Fadougou	FAG0158	423,717	1,200,394	401	90	10.00	6.00	9.00	<0.01	
Fadougou	FAG0159	423,000	1,200,803	391	90	10.00	8.00	10.00		0.02
Fadougou	FAG0160	423,094	1,200,793	392	90	13.00	7.00	10.00	<0.01	
Fadougou	FAG0161	423,292	1,200,797	397	90	10.00	2.00	5.00	<0.01	
Fadougou	FAG0162	423,004	1,201,601	395	90	10.00	7.00	10.00	<0.01	
Fadougou	FAG0163	422,889	1,201,596	392	90	9.00	4.00	7.00	<0.01	
Fadougou	FAG0164	422,801	1,201,597	400	90	9.00	5.00	8.00	<0.01	
Fadougou	FAG0165	422,683	1,201,598	406	90	8.00	6.00	8.00	<0.01	
Fadougou	FAG0166	422,595	1,201,603	402	90	9.00	6.00	9.00		0.08
Fadougou	FAG0167	422,506	1,201,605	410	90	9.00	6.00	9.00	<0.01	
Fadougou	FAG0168	422,402	1,201,601	403	90	9.00	6.00	9.00	<0.01	
Fadougou	FAG0169	422,335	1,201,547	440	90	13.00	7.00	10.00	<0.01	
Fadougou	FAG0170	422,221	1,201,594	455	90	13.00	8.00	11.00	<0.01	
Fadougou	FAG0171	422,094	1,201,602	422	90	13.00	7.00	10.00	<0.01	
Fadougou	FAG0172	422,000	1,201,603	415	90	12.00	9.00	12.00	<0.01	
Fadougou	FAG0173	421,917	1,201,595	406	90	13.00	10.00	13.00	<0.01	
Fadougou	FAG0174	421,500	1,202,002	426	90	13.00	5.00	8.00	<0.01	
Fadougou	FAG0175	421,596	1,201,996	432	90	13.00	5.00	8.00	<0.01	
Fadougou	FAG0176	421,702	1,202,001	441	90	13.00	5.00	8.00	<0.01	
Fadougou	FAG0177	421,792	1,202,000	444	90	13.00	6.00	9.00	<0.01	

Fadougou	FAG0178	421,886	1,202,000	434	90	13.00	10.00	13.00	<0.01
Fadougou	FAG0179	421,995	1,201,999	422	90	14.00	10.00	13.00	<0.01
Fadougou	FAG0180	422,097	1,201,997	421	90	11.00	8.00	11.00	<0.01
Fadougou	FAG0181	422,201	1,202,001	412	90	12.00	9.00	12.00	<0.01
Fadougou	FAG0182	422,304	1,201,998	411	90	11.00	8.00	11.00	<0.01
Fadougou	FAG0183	422,397	1,201,996	404	90	8.00	5.00	8.00	<0.01
Fadougou	FAG0184	422,496	1,201,999	409	90	9.00	7.00	9.00	<0.01
Fadougou	FAG0185	422,604	1,201,999	401	90	10.00	8.00	10.00	<0.01
Fadougou	FAG0186	422,703	1,201,995	409	90	10.00	7.00	10.00	<0.01
Fadougou	FAG0187	421,190	1,202,406	414	90	11.00	8.00	11.00	<0.01
Fadougou	FAG0188	421,283	1,202,392	411	90	13.00	7.00	10.00	0.02
Fadougou	FAG0189	421,399	1,202,397	418	90	11.00	7.00	10.00	0.01
Fadougou	FAG0190	421,500	1,202,403	419	90	13.00	10.00	13.00	0.02
Fadougou	FAG0191	421,593	1,202,392	423	90	11.00	8.00	11.00	0.01
Fadougou	FAG0192	421,697	1,202,400	420	90	11.00	8.00	11.00	0.02
Fadougou	FAG0193	421,787	1,202,393	425	90	13.00	10.00	13.00	0.01
Fadougou	FAG0194	421,890	1,202,396	427	90	13.00	10.00	13.00	0.02
Fadougou	FAG0195	421,999	1,202,399	416	90	11.00	9.00	11.00	0.03
Fadougou	FAG0196	422,099	1,202,401	414	90	11.00	8.00	11.00	0.01
Fadougou	FAG0197	422,187	1,202,389	414	90	13.00	10.00	13.00	<0.01
Fadougou	FAG0198	422,296	1,202,404	410	90	13.00	7.00	10.00	<0.01
Fadougou	FAG0199	422,402	1,202,398	406	90	10.00	7.00	10.00	0.02
Fadougou	FAG0200	422,496	1,202,406	412	90	11.00	7.00	10.00	<0.01
Fadougou	FAG0201	421,903	1,202,807	408	90	12.00	7.00	10.00	0.02
Fadougou	FAG0202	421,982	1,202,815	415	90	12.00	9.00	12.00	0.01
Fadougou	FAG0203	422,102	1,202,805	424	90	13.00	9.00	12.00	0.02
Fadougou	FAG0204	422,199	1,202,801	417	90	10.00	7.00	10.00	0.06
Fadougou	FAG0205	422,298	1,202,806	417	90	11.00	8.00	11.00	0.02
Fadougou	FAG0206	421,801	1,202,798	409	90	13.00	8.00	11.00	0.02
Fadougou	FAG0207	421,707	1,202,794	394	90	11.00	6.00	9.00	0.01
Fadougou	FAG0208	421,612	1,202,793	392	90	13.00	9.00	12.00	0.02
Fadougou	FAG0209	421,496	1,202,802	401	90	10.00	4.00	7.00	0.02
Fadougou	FAG0210	421,407	1,202,804	390	90	13.00	9.00	12.00	0.01
Fadougou	FAG0211	421,305	1,202,801	394	90	14.00	6.00	9.00	0.01
Fadougou	FAG0212	421,205	1,202,799	394	90	11.00	5.00	8.00	0.02
Fadougou	FAG0213	421,300	1,197,196	395	90	13.00	5.00	8.00	0.01
Fadougou	FAG0214	421,198	1,197,201	397	90	13.00	4.00	7.00	<0.01
Fadougou	FAG0215	421,100	1,197,200	414	90	11.00	5.00	8.00	<0.01
Fadougou	FAG0216	421,003	1,197,195	401	90	13.00	2.00	5.00	0.02
Fadougou	FAG0216	421,003	1,197,195	401	90	13.00	8.00	11.00	0.02
Fadougou	FAG0217	420,918	1,197,194	403	90	17.00	14.00	17.00	0.02
Fadougou	FAG0218	420,802	1,197,196	401	90	11.00	4.00	7.00	0.02
Fadougou	FAG0219	420,696	1,197,198	400	90	9.00	6.00	9.00	0.02
Fadougou	FAG0220	420,603	1,197,203	407	90	10.00	6.00	9.00	0.01
Fadougou	FAG0221	420,501	1,197,193	430	90	11.00	8.00	11.00	<0.01
Fadougou	FAG0222	420,401	1,197,595	404	90	11.00	8.00	11.00	<0.01
Fadougou	FAG0223	420,498	1,197,604	398	90	12.00	4.00	7.00	<0.01
Fadougou	FAG0224	420,589	1,197,606	398	90	11.00	8.00	11.00	0.02
Fadougou	FAG0225	420,692	1,197,590	402	90	11.00	7.00	10.00	0.02
Fadougou	FAG0228	420,994	1,197,605	416	90	13.00	2.00	5.00	0.01
Fadougou	FAG0228	420,994	1,197,605	416	90	13.00	7.00	10.00	<0.01
Fadougou	FAG0229	421,100	1,197,599	410	90	11.00	7.00	10.00	0.02
Fadougou	FAG0230	421,197	1,197,595	414	90	11.00	6.00	9.00	0.02
Fadougou	FAG0231	421,014	1,198,003	397	90	13.00	5.00	8.00	0.02
Fadougou	FAG0232	420,908	1,198,000	399	90	13.00	5.00	8.00	0.02
Fadougou	FAG0233	420,800	1,197,996	396	90	10.00	1.00	4.00	<0.01
Fadougou	FAG0233	420,800	1,197,996	396	90	10.00	6.00	9.00	0.01
Fadougou	FAG0234	420,704	1,198,000	394	90	10.00	1.00	4.00	0.01
Fadougou	FAG0235	420,611	1,197,997	392	90	11.00	8.00	11.00	0.02
Fadougou	FAG0236	420,499	1,198,009	402	90	10.00	2.00	5.00	0.01
Fadougou	FAG0236	420,499	1,198,009	402	90	10.00	7.00	10.00	0.02
Fadougou	FAG0237	420,406	1,197,992	397	90	11.00	2.00	4.00	0.02
Fadougou	FAG0237	420,406	1,197,992	397	90	11.00	6.00	9.00	<0.01
Fadougou	FAG0238	420,293	1,197,990	401	90	10.00	6.00	9.00	0.02

Fadougou	FAG0239	420,201	1,198,403	385	90	12.00	8.00	11.00	0.02
Fadougou	FAG0240	420,298	1,198,404	397	90	7.00	2.00	5.00	0.01
Fadougou	FAG0241	420,400	1,198,405	402	90	11.00	6.00	9.00	0.02
Fadougou	FAG0242	420,484	1,198,398	402	90	11.00	5.00	8.00	0.02
Fadougou	FAG0243	420,604	1,198,417	412	90	11.00	5.00	8.00	0.02
Fadougou	FAG0244	420,703	1,198,392	400	90	11.00	3.00	6.00	0.01
Fadougou	FAG0244	420,703	1,198,392	400	90	11.00	8.00	11.00	0.02
Fadougou	FAG0245	420,693	1,198,796	402	90	10.00	5.00	8.00	0.02
Fadougou	FAG0246	420,602	1,198,797	407	90	11.00	6.00	9.00	<0.01
Fadougou	FAG0247	420,502	1,198,799	411	90	12.00	9.00	12.00	0.03
Fadougou	FAG0249	420,402	1,198,795	412	90	13.00	10.00	13.00	<0.01
Fadougou	FAG0250	420,304	1,198,797	406	90	13.00	6.00	9.00	<0.01
Fadougou	FAG0251	420,204	1,198,799	407	90	13.00	10.00	13.00	<0.01
Fadougou	FAG0252	420,108	1,198,802	406	90	13.00	10.00	13.00	<0.01
Fadougou	FAG0253	420,005	1,198,805	410	90	13.00	10.00	13.00	<0.01
Fadougou	FAG0254	418,101	1,197,600	427	90	13.00	7.00	10.00	<0.01
Fadougou	FAG0255	418,003	1,197,600	429	90	12.00	6.00	9.00	<0.01
Fadougou	FAG0256	417,899	1,197,599	437	90	11.00	8.00	11.00	0.01
Fadougou	FAG0257	417,795	1,197,609	422	90	12.00	5.00	8.00	<0.01
Fadougou	FAG0258	417,712	1,197,597	425	90	11.00	2.00	4.00	<0.01
Fadougou	FAG0258	417,712	1,197,597	425	90	11.00	8.00	11.00	0.01
Fadougou	FAG0259	417,614	1,197,599	442	90	11.00	5.00	8.00	<0.01
Fadougou	FAG0260	417,501	1,197,605	425	90	10.00	5.00	8.00	<0.01
Fadougou	FAG0261	417,404	1,197,599	423	90	10.00	7.00	10.00	<0.01
Fadougou	FAG0262	417,207	1,197,605	432	90	11.00	8.00	11.00	<0.01
Fadougou	FAG0263	417,282	1,197,605	420	90	11.00	4.00	7.00	<0.01
Fadougou	FAG0264	417,300	1,198,011	407	90	10.00	3.00	6.00	<0.01
Fadougou	FAG0264	417,300	1,198,011	407	90	10.00	7.00	10.00	<0.01
Fadougou	FAG0267	417,600	1,197,996	399	90	11.00	1.00	4.00	<0.01
Fadougou	FAG0268	417,712	1,197,995	401	90	13.00	10.00	13.00	<0.01
Fadougou	FAG0269	417,795	1,198,002	399	90	13.00	10.00	13.00	<0.01
Fadougou	FAG0270	417,897	1,197,998	400	90	11.00	8.00	11.00	<0.01
Fadougou	FAG0271	417,994	1,197,991	399	90	13.00	7.00	10.00	<0.01
Fadougou	FAG0272	418,007	1,198,398	403	90	11.00	4.00	7.00	<0.01
Fadougou	FAG0273	417,910	1,198,421	416	90	13.00	1.00	4.00	<0.01
Fadougou	FAG0273	417,910	1,198,421	416	90	13.00	7.00	10.00	<0.01
Fadougou	FAG0274	417,801	1,198,399	414	90	13.00	1.00	4.00	<0.01
Fadougou	FAG0274	417,801	1,198,399	414	90	13.00	7.00	10.00	<0.01
Fadougou	FAG0275	417,701	1,198,389	420	90	11.00	8.00	11.00	<0.01
Fadougou	FAG0276	417,600	1,198,398	405	90	10.00	7.00	10.00	<0.01
Fadougou	FAG0277	417,499	1,198,404	413	90	13.00	1.00	4.00	<0.01
Fadougou	FAG0277	417,499	1,198,404	413	90	13.00	9.00	12.00	<0.01
Fadougou	FAG0278	417,393	1,198,393	415	90	11.00	1.00	4.00	<0.01
Fadougou	FAG0278	417,393	1,198,393	415	90	11.00	7.00	10.00	<0.01
Fadougou	FAG0279	417,306	1,198,398	417	90	10.00	6.00	9.00	<0.01
Fadougou	FAG0280	417,307	1,198,792	421	90	11.00	5.00	8.00	<0.01
Fadougou	FAG0281	417,400	1,198,799	412	90	11.00	7.00	10.00	<0.01
Fadougou	FAG0282	417,494	1,198,814	421	90	12.00	7.00	10.00	<0.01
Fadougou	FAG0283	417,598	1,198,803	419	90	11.00	8.00	11.00	<0.01
Fadougou	FAG0284	417,697	1,198,790	405	90	12.00	4.00	7.00	<0.01
Fadougou	FAG0284	417,697	1,198,790	405	90	12.00	10.00	12.00	<0.01
Fadougou	FAG0285	417,805	1,198,800	409	90	12.00	5.00	8.00	<0.01
Fadougou	FAG0286	417,900	1,198,799	413	90	11.00	2.00	5.00	<0.01
Fadougou	FAG0287	417,999	1,198,798	405	90	10.00	7.00	10.00	<0.01
Fadougou	FAG0288	418,001	1,199,194	425	90	13.00	1.00	4.00	<0.01
Fadougou	FAG0288	418,001	1,199,194	425	90	13.00	10.00	13.00	<0.01
Fadougou	FAG0289	417,917	1,199,201	422	90	13.00	3.00	6.00	<0.01
Fadougou	FAG0289	417,917	1,199,201	422	90	13.00	10.00	13.00	<0.01
Fadougou	FAG0290	417,799	1,199,207	422	90	11.00	1.00	4.00	<0.01
Fadougou	FAG0290	417,799	1,199,207	422	90	11.00	8.00	11.00	<0.01
Fadougou	FAG0291	417,718	1,199,217	424	90	13.00	10.00	13.00	<0.01
Fadougou	FAG0292	417,595	1,199,203	418	90	12.00	9.00	12.00	<0.01
Fadougou	FAG0293	417,499	1,199,192	412	90	12.00	9.00	12.00	<0.01
Fadougou	FAG0294	417,399	1,199,205	418	90	12.00	9.00	12.00	<0.01

Fadougou	FAG0295	417,300	1,199,202	412	90	12.00	7.00	10.00	<0.01
Fadougou	FAG0296	417,319	1,199,609	419	90	13.00	2.00	5.00	<0.01
Fadougou	FAG0296	417,319	1,199,609	419	90	13.00	10.00	13.00	<0.01
Fadougou	FAG0297	417,403	1,199,596	426	90	13.00	8.00	11.00	<0.01
Fadougou	FAG0298	417,487	1,199,603	436	90	13.00	6.00	9.00	<0.01
Fadougou	FAG0299	417,594	1,199,604	427	90	13.00	7.00	10.00	<0.01
Fadougou	FAG0300	417,710	1,199,612	419	90	12.00	8.00	11.00	<0.01
Fadougou	FAG0301	417,807	1,199,610	421	90	12.00	8.00	11.00	<0.01
Fadougou	FAG0302	417,895	1,199,609	420	90	13.00	7.00	10.00	<0.01
Fadougou	FAG0303	417,993	1,199,602	421	90	13.00	7.00	10.00	<0.01
Fadougou	FAG0304	417,983	1,199,963	439	90	12.00	5.00	8.00	<0.01
Fadougou	FAG0305	417,905	1,200,007	409	90	11.00	5.00	8.00	<0.01
Fadougou	FAG0306	417,797	1,200,006	404	90	10.00	5.00	8.00	<0.01
Fadougou	FAG0307	417,696	1,199,999	410	90	12.00	7.00	10.00	<0.01
Fadougou	FAG0308	417,605	1,199,990	413	90	13.00	6.00	9.00	<0.01
Fadougou	FAG0309	417,502	1,199,996	411	90	13.00	6.00	9.00	<0.01
Fadougou	FAG0310	417,402	1,200,003	405	90	11.00	6.00	9.00	<0.01
Fadougou	FAG0311	417,308	1,200,000	397	90	12.00	5.00	8.00	<0.01
Fadougou	FAG0312	417,500	1,200,799	422	90	14.00	8.00	11.00	0.15
Fadougou	FAG0313	417,607	1,200,796	421	90	14.00	9.00	12.00	0.01
Fadougou	FAG0314	417,701	1,200,796	424	90	13.00	6.00	9.00	<0.01
Fadougou	FAG0315	417,807	1,200,792	427	90	12.00	9.00	12.00	0.01
Fadougou	FAG0316	417,906	1,200,802	422	90	13.00	9.00	12.00	<0.01
Fadougou	FAG0317	418,000	1,200,801	418	90	12.00	6.00	9.00	0.01
Fadougou	FAG0318	418,099	1,200,795	426	90	11.00	6.00	9.00	<0.01
Fadougou	FAG0319	418,199	1,200,792	427	90	13.00	8.00	11.00	0.01
Fadougou	FAG0320	418,305	1,200,792	426	90	13.00	8.00	11.00	<0.01
Fadougou	FAG0321	418,400	1,200,807	421	90	13.00	6.00	9.00	0.02
Fadougou	FAG0322	418,500	1,200,796	439	90	11.00	7.00	10.00	<0.01
Fadougou	FAG0323	418,607	1,200,800	440	90	13.00	8.00	11.00	<0.01
Fadougou	FAG0324	418,704	1,200,801	429	90	12.00	6.00	9.00	0.02
Fadougou	FAG0325	418,796	1,200,800	432	90	11.00	5.00	8.00	<0.01
Fadougou	FAG0326	418,896	1,200,797	430	90	11.00	5.00	8.00	<0.01
Fadougou	FAG0327	418,602	1,201,203	418	90	13.00	6.00	9.00	0.02
Fadougou	FAG0328	418,508	1,201,209	415	90	13.00	7.00	10.00	<0.01
Fadougou	FAG0329	418,405	1,201,179	416	90	13.00	6.00	9.00	0.01
Fadougou	FAG0330	418,299	1,201,193	422	90	11.00	7.00	10.00	0.02
Fadougou	FAG0331	418,212	1,201,204	421	90	13.00	6.00	9.00	<0.01
Fadougou	FAG0332	418,101	1,201,199	424	90	13.00	7.00	10.00	0.02
Fadougou	FAG0333	418,006	1,201,196	421	90	11.00	9.00	11.00	0.01
Fadougou	FAG0334	419,100	1,201,193	429	90	6.00	3.00	6.00	<0.01
Fadougou	FAG0335	419,006	1,201,200	417	90	10.00	7.00	10.00	<0.01
Fadougou	FAG0336	418,906	1,201,196	422	90	11.00	6.00	9.00	0.02
Fadougou	FAG0337	418,802	1,201,199	424	90	13.00	7.00	10.00	0.01
Fadougou	FAG0338	418,701	1,201,200	424	90	14.00	6.00	9.00	0.03
Fadougou	FAG0339	417,908	1,201,213	418	90	11.00	2.00	5.00	0.01
Fadougou	FAG0339	417,908	1,201,213	418	90	11.00	7.00	10.00	0.01
Fadougou	FAG0340	417,801	1,201,206	426	90	13.00	1.00	4.00	<0.01
Fadougou	FAG0340	417,801	1,201,206	426	90	13.00	6.00	9.00	<0.01
Fadougou	FAG0341	418,203	1,201,598	398	90	14.00	7.00	10.00	<0.01
Fadougou	FAG0342	418,302	1,201,599	399	90	12.00	7.00	10.00	0.05
Fadougou	FAG0343	418,399	1,201,602	401	90	10.00	7.00	10.00	0.02
Fadougou	FAG0344	418,502	1,201,597	405	90	12.00	7.00	10.00	0.01
Fadougou	FAG0345	418,595	1,201,590	413	90	12.00	6.00	9.00	<0.01
Fadougou	FAG0346	418,700	1,201,601	419	90	12.00	7.00	10.00	<0.01
Fadougou	FAG0347	418,801	1,201,604	424	90	13.00	6.00	9.00	0.02
Fadougou	FAG0348	418,900	1,201,601	421	90	12.00	8.00	11.00	<0.01
Fadougou	FAG0349	419,002	1,201,603	423	90	13.00	8.00	11.00	0.04
Fadougou	FAG0350	419,099	1,201,603	418	90	13.00	10.00	13.00	0.02
Fadougou	FAG0351	419,210	1,201,599	405	90	12.00	6.00	9.00	<0.01
Fadougou	FAG0352	421,101	1,200,137	400	90	14.00	2.00	5.00	<0.01
Fadougou	FAG0352	421,101	1,200,137	400	90	14.00	11.00	14.00	0.03
Fadougou	FAG0353	421,195	1,200,165	393	90	11.00	4.00	7.00	0.03
Fadougou	FAG0354	421,283	1,200,160	391	90	11.00	6.00	9.00	0.01

Fadougou	FAG0355	421,394	1,200,144	394	90	11.00	8.00	11.00	0.02
Fadougou	FAG0356	421,516	1,200,097	395	90	10.00	5.00	8.00	<0.01
Fadougou	FAG0357	421,603	1,200,109	399	90	10.00	6.00	9.00	0.01
Fadougou	FAG0358	421,687	1,200,127	397	90	12.00	6.00	9.00	<0.01
Fadougou	FAG0359	421,786	1,200,150	401	90	13.00	5.00	8.00	<0.01
Fadougou	FAG0360	421,982	1,200,150	402	90	13.00	6.00	9.00	<0.01
Fadougou	FAG0361	421,895	1,200,144	399	90	13.00	5.00	8.00	0.01
Fadougou	FAG0362	422,090	1,200,211	409	90	13.00	6.00	9.00	<0.01
Fadougou	FAG0363	422,283	1,200,196	405	90	13.00	6.00	9.00	<0.01
Fadougou	FAG0364	422,379	1,200,213	403	90	11.00	7.00	10.00	0.02
Fadougou	FAG0365	422,179	1,200,208	408	90	13.00	7.00	10.00	0.01
Fadougou	FAG0366	422,257	1,199,006	394	90	11.00	7.00	10.00	0.02
Fadougou	FAG0367	422,351	1,199,006	400	90	13.00	9.00	12.00	0.01
Fadougou	FAG0368	422,448	1,199,005	403	90	13.00	8.00	11.00	0.01
Fadougou	FAG0369	422,550	1,199,001	404	90	14.00	9.00	12.00	<0.01
Fadougou	FAG0370	422,615	1,198,996	393	90	14.00	9.00	12.00	0.01
Fadougou	FAG0371	422,755	1,199,003	401	90	13.00	7.00	10.00	<0.01
Fadougou	FAG0372	422,949	1,198,996	400	90	13.00	5.00	8.00	0.02
Fadougou	FAG0373	423,045	1,199,002	402	90	13.00	8.00	11.00	<0.01
Fadougou	FAG0374	423,149	1,198,999	401	90	13.00	7.00	10.00	<0.01
Fadougou	FAG0375	423,248	1,199,003	408	90	13.00	10.00	13.00	<0.01
Fadougou	FAG0376	423,349	1,198,991	403	90	11.00	8.00	11.00	0.01
Fadougou	FAG0377	423,450	1,199,005	408	90	13.00	10.00	13.00	<0.01
Fadougou	FAG0378	422,844	1,199,005	411	90	12.00	6.00	9.00	<0.01
Fadougou	FAG0379	422,155	1,199,004	408	90	13.00	5.00	8.00	0.01
Kouroussa	KAG0001	404,475	1,179,795	391	90	9.00	6.00	9.00	0.02
Kouroussa	KAG0002	404,521	1,179,795	392	90	9.00	6.00	9.00	1.86
Kouroussa	KAG0003	404,575	1,179,793	399	90	10.00	7.00	10.00	0.05
Kouroussa	KAG0004	404,625	1,179,799	401	90	10.00	7.00	10.00	0.5
Kouroussa	KAG0005	404,673	1,179,795	404	90	11.00	7.00	11.00	<0.01
Kouroussa	KAG0006	404,725	1,179,795	404	90	6.00	3.00	6.00	<0.01
Kouroussa	KAG0007	404,770	1,179,796	398	90	5.00	2.00	5.00	<0.01
Kouroussa	KAG0008	404,826	1,179,794	400	90	6.00	3.00	6.00	<0.01
Kouroussa	KAG0009	404,876	1,179,794	401	90	6.00	3.00	6.00	<0.01
Kouroussa	KAG0010	404,925	1,179,794	401	90	5.00	3.00	5.00	<0.01
Kouroussa	KAG0011	404,475	1,179,989	395	90	5.00	3.00	5.00	<0.01
Kouroussa	KAG0012	404,529	1,179,987	397	90	5.00	3.00	5.00	0.03
Kouroussa	KAG0013	404,574	1,179,995	398	90	5.00	3.00	5.00	<0.01
Kouroussa	KAG0014	404,623	1,179,995	403	90	5.00	2.00	5.00	<0.01
Kouroussa	KAG0015	404,676	1,179,993	412	90	5.00	2.00	5.00	<0.01
Kouroussa	KAG0016	404,724	1,179,994	412	90	4.00	2.00	4.00	<0.01
Kouroussa	KAG0017	404,773	1,179,998	410	90	5.00	3.00	5.00	0.03
Kouroussa	KAG0018	404,822	1,179,995	415	90	6.00	4.00	6.00	<0.01
Kouroussa	KAG0019	404,871	1,179,994	422	90	5.00	2.00	5.00	0.11
Kouroussa	KAG0020	404,923	1,179,996	420	90	12.00	9.00	12.00	0.05
Kouroussa	KAG0021	404,925	1,180,167	460	90	16.00	12.00	15.00	0.09
Kouroussa	KAG0022	404,874	1,180,163	422	90	9.00	6.00	9.00	0.02
Kouroussa	KAG0023	404,828	1,180,169	431	90	12.00	10.00	12.00	0.05
Kouroussa	KAG0024	404,777	1,180,163	425	90	9.00	6.00	9.00	<0.01
Kouroussa	KAG0025	404,727	1,180,163	429	90	10.00	6.00	9.00	<0.01
Kouroussa	KAG0026	404,676	1,180,161	424	90	5.00	2.00	5.00	<0.01
Kouroussa	KAG0027	404,625	1,180,157	419	90	4.00	2.00	4.00	0.05
Kouroussa	KAG0028	404,575	1,180,162	421	90	6.00	2.00	6.00	0.05
Kouroussa	KAG0029	404,524	1,180,170	421	90	5.00	2.00	5.00	<0.01
Kouroussa	KAG0030	404,493	1,180,168	368	90	11.00	2.00	5.00	<0.01
Kouroussa	KAG0030	404,493	1,180,168	368	90	11.00	5.00	8.00	<0.01
Kouroussa	KAG0031	404,427	1,180,164	382	90	7.00	3.00	6.00	0.03
Kouroussa	KAG0032	404,377	1,180,166	403	90	5.00	3.00	5.00	0.02
Kouroussa	KAG0033	404,332	1,180,165	377	90	5.00	2.00	5.00	<0.01
Kouroussa	KAG0034	404,282	1,180,168	401	90	6.00	3.00	6.00	<0.01
Kouroussa	KAG0035	404,230	1,180,166	401	90	9.00	7.00	9.00	0.03
Kouroussa	KAG0036	404,176	1,180,166	399	90	7.00	4.00	7.00	<0.01
Kouroussa	KAG0037	404,128	1,180,160	399	90	10.00	5.00	8.00	<0.01
Kouroussa	KAG0038	403,976	1,180,168	396	90	11.00	9.00	11.00	0.02

Kouroussa	KAG0039	403,924	1,180,166	393	90	13.00	11.00	13.00	0.01
Kouroussa	KAG0040	403,876	1,180,161	388	90	11.00	8.00	11.00	<0.01
Kouroussa	KAG0041	403,825	1,180,162	386	90	8.00	6.00	8.00	<0.01
Kouroussa	KAG0042	403,777	1,180,164	378	90	7.00	5.00	7.00	<0.01
Kouroussa	KAG0044	403,678	1,180,164	377	90	8.00	6.00	8.00	<0.01
Kouroussa	KAG0045	403,626	1,180,167	376	90	11.00	6.00	11.00	<0.01
Kouroussa	KAG0046	403,586	1,180,166	376	90	10.00	5.00	10.00	<0.01
Kouroussa	KAG0047	403,525	1,180,163	375	90	7.00	6.00	7.00	0.01
Kouroussa	KAG0048	404,433	1,179,991	399	90	6.00	3.00	6.00	<0.01
Kouroussa	KAG0049	404,373	1,179,989	394	90	7.00	4.00	7.00	0.02
Kouroussa	KAG0050	404,323	1,179,999	393	90	8.00	5.00	8.00	<0.01
Kouroussa	KAG0051	404,268	1,179,995	389	90	7.00	4.00	7.00	0.01
Kouroussa	KAG0052	404,226	1,179,996	392	90	6.00	4.00	6.00	0.03
Kouroussa	KAG0053	404,175	1,179,994	382	90	7.00	5.00	7.00	0.01
Kouroussa	KAG0054	404,126	1,179,993	386	90	9.00	5.00	8.00	0.01
Kouroussa	KAG0055	404,074	1,179,993	389	90	13.00	7.00	10.00	0.02
Kouroussa	KAG0056	404,026	1,179,995	381	90	9.00	8.00	9.00	0.46
Kouroussa	KAG0057	403,977	1,179,996	384	90	9.00	6.00	9.00	0.02
Kouroussa	KAG0058	403,928	1,179,993	375	90	8.00	6.00	8.00	<0.01
Kouroussa	KAG0059	403,876	1,179,994	371	90	8.00	6.00	8.00	0.02
Kouroussa	KAG0060	403,825	1,179,997	370	90	8.00	7.00	8.00	0.47
Kouroussa	KAG0061	403,775	1,179,996	369	90	8.00	6.00	8.00	0.04
Kouroussa	KAG0062	403,725	1,179,991	369	90	6.00	5.00	6.00	0.02
Kouroussa	KAG0064	403,626	1,179,998	370	90	12.00	6.00	9.00	0.01
Kouroussa	KAG0067	404,427	1,179,795	389	90	9.00	7.00	9.00	0.04
Kouroussa	KAG0068	404,377	1,179,797	389	90	10.00	4.00	10.00	0.02
Kouroussa	KAG0069	404,326	1,179,794	383	90	11.00	3.00	8.00	<0.01
Kouroussa	KAG0069	404,326	1,179,794	383	90	11.00	8.00	11.00	<0.01
Kouroussa	KAG0070	404,277	1,179,797	381	90	11.00	9.00	11.00	<0.01
Kouroussa	KAG0071	404,222	1,179,795	379	90	13.00	8.00	13.00	<0.01
Kouroussa	KAG0072	404,173	1,179,797	380	90	11.00	9.00	11.00	0.03
Kouroussa	KAG0073	404,127	1,179,794	381	90	12.00	10.00	12.00	<0.01
Kouroussa	KAG0075	404,024	1,179,797	374	90	10.00	8.00	10.00	<0.01
Kouroussa	KAG0076	403,976	1,179,797	371	90	9.00	7.00	9.00	0.03
Kouroussa	KAG0078	404,423	1,179,597	376	90	13.00	11.00	13.00	0.04
Kouroussa	KAG0079	404,917	1,179,594	400	90	9.00	6.00	9.00	<0.01
Kouroussa	KAG0080	404,873	1,179,592	400	90	10.00	5.00	10.00	<0.01
Kouroussa	KAG0081	404,822	1,179,598	392	90	9.00	4.00	7.00	0.04
Kouroussa	KAG0082	404,771	1,179,601	396	90	10.00	4.00	6.00	0.02
Kouroussa	KAG0083	404,728	1,179,596	388	90	9.00	6.00	9.00	<0.01
Kouroussa	KAG0084	404,673	1,179,594	391	90	8.00	3.00	8.00	0.03
Kouroussa	KAG0086	404,584	1,179,591	388	90	9.00	2.00	4.00	0.05
Kouroussa	KAG0086	404,584	1,179,591	388	90	9.00	4.00	9.00	0.02
Kouroussa	KAG0087	404,525	1,179,589	383	90	9.00	5.00	9.00	0.03
Kouroussa	KAG0088	404,475	1,179,592	380	90	13.00	11.00	13.00	0.04
Kouroussa	KAG0089	404,324	1,179,599	378	90	8.00	6.00	8.00	0.01
Kouroussa	KAG0090	404,275	1,179,595	372	90	13.00	9.00	13.00	<0.01
Kouroussa	KAG0091	404,217	1,179,594	381	90	8.00	7.00	8.00	<0.01
Kouroussa	KAG0092	404,176	1,179,599	368	90	13.00	9.00	13.00	<0.01
Kouroussa	KAG0093	404,123	1,179,600	372	90	7.00	5.00	7.00	0.04
Kouroussa	KAG0094	404,074	1,179,596	373	90	10.00	8.00	10.00	<0.01
Kouroussa	KAG0095	404,018	1,179,595	369	90	10.00	7.00	10.00	<0.01
Kouroussa	KAG0096	403,976	1,179,596	368	90	9.00	6.00	9.00	0.03
Kouroussa	KAG0097	403,926	1,179,599	355	90	10.00	8.00	10.00	<0.01
Kouroussa	KAG0098	403,886	1,179,595	367	90	9.00	6.00	9.00	0.01
Kouroussa	KAG0099	403,722	1,179,595	363	90	11.00	8.00	11.00	<0.01
Kouroussa	KAG0100	403,683	1,179,591	363	90	7.00	4.00	7.00	0.01
Kouroussa	KAG0101	403,623	1,179,582	361	90	7.00	4.00	7.00	0.02
Kouroussa	KAG0102	403,576	1,179,595	363	90	7.00	4.00	7.00	0.02
Kouroussa	KAG0103	403,523	1,179,596	363	90	7.00	4.00	7.00	<0.01
Kouroussa	KAG0104	403,621	1,179,791	369	90	9.00	7.00	9.00	0.02
Kouroussa	KAG0105	403,577	1,179,800	366	90	9.00	7.00	9.00	0.06
Kouroussa	KAG0106	403,525	1,179,790	368	90	8.00	6.00	8.00	0.01
Kouroussa	KAG0107	403,673	1,179,800	366	90	12.00	8.00	12.00	<0.01

Kouroussa	KAG0108	403,722	1,179,798	369	90	12.00	9.00	12.00	0.02
Kouroussa	KAG0109	403,772	1,179,793	369	90	10.00	7.00	10.00	<0.01
Kouroussa	KAG0110	403,822	1,179,795	369	90	10.00	7.00	10.00	0.02
Kouroussa	KAG0111	403,876	1,179,794	368	90	11.00	8.00	11.00	<0.01
Kouroussa	KAG0112	403,925	1,179,789	371	90	11.00	9.00	11.00	0.02
Kouroussa	KAG0113	403,925	1,179,896	380	90	18.00	12.00	15.00	0.02
Kouroussa	KAG0113	403,925	1,179,896	380	90	18.00	15.00	18.00	0.01
Kouroussa	KAG0114	403,976	1,179,895	375	90	14.00	8.00	11.00	0.02
Kouroussa	KAG0114	403,976	1,179,895	375	90	14.00	11.00	14.00	0.04
Kouroussa	KAG0115	404,027	1,179,894	377	90	18.00	12.00	15.00	0.26
Kouroussa	KAG0115	404,027	1,179,894	377	90	18.00	15.00	18.00	0.12
Kouroussa	KAG0116	404,075	1,179,898	384	90	18.00	12.00	15.00	0.02
Kouroussa	KAG0116	404,075	1,179,898	384	90	18.00	15.00	18.00	0.02
Kouroussa	KAG0117	404,123	1,179,897	383	90	18.00	12.00	15.00	<0.01
Kouroussa	KAG0117	404,123	1,179,897	383	90	18.00	15.00	18.00	<0.01
Kouroussa	KAG0118	404,120	1,179,896	383	90	18.00	12.00	15.00	<0.01
Kouroussa	KAG0118	404,120	1,179,896	383	90	18.00	15.00	18.00	<0.01
Kouroussa	KAG0119	404,218	1,179,880	415	90	20.00	14.00	17.00	<0.01
Kouroussa	KAG0119	404,218	1,179,880	415	90	20.00	17.00	20.00	<0.01
Kouroussa	KAG0120	404,277	1,179,890	388	90	20.00	14.00	17.00	<0.01
Kouroussa	KAG0120	404,277	1,179,890	388	90	20.00	17.00	20.00	0.07
Kouroussa	KAG0121	404,325	1,179,895	387	90	18.00	12.00	15.00	0.04
Kouroussa	KAG0121	404,325	1,179,895	387	90	18.00	15.00	18.00	0.03
Kouroussa	KAG0122	404,363	1,179,892	390	90	20.00	14.00	17.00	0.05
Kouroussa	KAG0122	404,363	1,179,892	390	90	20.00	17.00	20.00	0.11
Kouroussa	KAG0123	404,429	1,179,890	397	90	18.00	12.00	15.00	<0.01
Kouroussa	KAG0123	404,429	1,179,890	397	90	18.00	15.00	18.00	<0.01
Kouroussa	KAG0124	404,480	1,179,899	396	90	20.00	14.00	17.00	0.08
Kouroussa	KAG0124	404,480	1,179,899	396	90	20.00	17.00	20.00	0.04
Kouroussa	KAG0125	404,522	1,179,896	396	90	18.00	12.00	15.00	0.12
Kouroussa	KAG0125	404,522	1,179,896	396	90	18.00	15.00	18.00	0.36
Kouroussa	KAG0126	404,575	1,179,893	398	90	20.00	14.00	17.00	0.02
Kouroussa	KAG0126	404,575	1,179,893	398	90	20.00	17.00	20.00	0.01
Kouroussa	KAG0127	404,623	1,179,896	406	90	18.00	12.00	15.00	<0.01
Kouroussa	KAG0127	404,623	1,179,896	406	90	18.00	15.00	18.00	<0.01
Kouroussa	KAG0128	404,666	1,179,879	400	90	21.00	15.00	18.00	<0.01
Kouroussa	KAG0128	404,666	1,179,879	400	90	21.00	18.00	21.00	<0.01
Kouroussa	KAG0129	404,723	1,179,884	407	90	18.00	12.00	15.00	0.02
Kouroussa	KAG0129	404,723	1,179,884	407	90	18.00	15.00	18.00	<0.01
Kouroussa	KAG0130	404,775	1,179,894	402	90	20.00	14.00	17.00	0.01
Kouroussa	KAG0130	404,775	1,179,894	402	90	20.00	17.00	20.00	0.01
Kouroussa	KAG0131	404,821	1,179,894	402	90	20.00	14.00	17.00	<0.01
Kouroussa	KAG0131	404,821	1,179,894	402	90	20.00	17.00	20.00	<0.01
Kouroussa	KAG0132	404,872	1,179,894	401	90	18.00	12.00	15.00	0.02
Kouroussa	KAG0132	404,872	1,179,894	401	90	18.00	15.00	18.00	0.01
Kouroussa	KAG0133	404,920	1,179,890	413	90	20.00	14.00	17.00	0.25
Kouroussa	KAG0133	404,920	1,179,890	413	90	20.00	17.00	20.00	0.15
Kouroussa	KAG0134	404,779	1,180,093	430	90	20.00	14.00	17.00	<0.01
Kouroussa	KAG0134	404,779	1,180,093	430	90	20.00	17.00	20.00	<0.01
Kouroussa	KAG0135	404,826	1,180,095	429	90	18.00	12.00	15.00	<0.01
Kouroussa	KAG0135	404,826	1,180,095	429	90	18.00	15.00	18.00	<0.01
Kouroussa	KAG0136	404,876	1,180,095	425	90	20.00	14.00	17.00	0.48
Kouroussa	KAG0136	404,876	1,180,095	425	90	20.00	17.00	20.00	0.31
Kouroussa	KAG0137	404,926	1,180,093	423	90	18.00	12.00	15.00	0.03
Kouroussa	KAG0137	404,926	1,180,093	423	90	18.00	15.00	18.00	0.03
Kouroussa	KAG0138	404,722	1,180,089	421	90	20.00	14.00	17.00	<0.01
Kouroussa	KAG0138	404,722	1,180,089	421	90	20.00	17.00	20.00	<0.01
Kouroussa	KAG0139	404,676	1,180,092	415	90	20.00	14.00	17.00	<0.01
Kouroussa	KAG0139	404,676	1,180,092	415	90	20.00	17.00	20.00	<0.01
Kouroussa	KAG0140	404,625	1,180,095	417	90	18.00	12.00	15.00	0.01
Kouroussa	KAG0140	404,625	1,180,095	417	90	18.00	15.00	18.00	0.01
Kouroussa	KAG0141	404,575	1,180,093	411	90	20.00	14.00	17.00	<0.01
Kouroussa	KAG0141	404,575	1,180,093	411	90	20.00	17.00	20.00	<0.01
Kouroussa	KAG0142	404,525	1,180,094	411	90	18.00	12.00	15.00	<0.01

Kouroussa	KAG0142	404,525	1,180,094	411	90	18.00	15.00	18.00	<0.01
Kouroussa	KAG0143	404,478	1,180,093	406	90	20.00	14.00	17.00	0.03
Kouroussa	KAG0143	404,478	1,180,093	406	90	20.00	17.00	20.00	0.02
Kouroussa	KAG0144	404,441	1,180,077	434	90	20.00	14.00	17.00	0.02
Kouroussa	KAG0144	404,441	1,180,077	434	90	20.00	17.00	20.00	0.02
Kouroussa	KAG0145	404,375	1,180,095	397	90	18.00	12.00	15.00	0.01
Kouroussa	KAG0145	404,375	1,180,095	397	90	18.00	15.00	18.00	0.02
Kouroussa	KAG0146	404,323	1,180,091	395	90	18.00	12.00	15.00	0.01
Kouroussa	KAG0146	404,323	1,180,091	395	90	18.00	15.00	18.00	0.01
Kouroussa	KAG0147	404,275	1,180,091	394	90	18.00	12.00	15.00	<0.01
Kouroussa	KAG0147	404,275	1,180,091	394	90	18.00	15.00	18.00	0.01
Kouroussa	KAG0148	404,201	1,180,068	388	90	18.00	12.00	15.00	<0.01
Kouroussa	KAG0148	404,201	1,180,068	388	90	18.00	15.00	18.00	<0.01
Kouroussa	KAG0149	404,173	1,180,096	396	90	18.00	12.00	15.00	<0.01
Kouroussa	KAG0149	404,173	1,180,096	396	90	18.00	15.00	18.00	<0.01
Kouroussa	KAG0150	404,125	1,180,094	400	90	18.00	12.00	15.00	0.02
Kouroussa	KAG0150	404,125	1,180,094	400	90	18.00	15.00	18.00	<0.01
Kouroussa	KAG0151	404,023	1,180,105	407	90	18.00	12.00	15.00	<0.01
Kouroussa	KAG0151	404,023	1,180,105	407	90	18.00	15.00	18.00	0.01
Kouroussa	KAG0152	403,973	1,180,091	385	90	19.00	13.00	16.00	0.01
Kouroussa	KAG0152	403,973	1,180,091	385	90	19.00	16.00	19.00	0.01
Kouroussa	KAG0153	403,922	1,180,095	378	90	18.00	12.00	15.00	0.01
Kouroussa	KAG0153	403,922	1,180,095	378	90	18.00	15.00	18.00	<0.01
Kouroussa	KAG0154	403,875	1,180,099	375	90	18.00	12.00	15.00	0.02
Kouroussa	KAG0154	403,875	1,180,099	375	90	18.00	15.00	18.00	0.02
Kouroussa	KAG0155	403,824	1,180,096	380	90	18.00	12.00	15.00	0.01
Kouroussa	KAG0155	403,824	1,180,096	380	90	18.00	15.00	18.00	0.01
Kouroussa	KAG0156	403,777	1,180,089	377	90	18.00	12.00	15.00	<0.01
Kouroussa	KAG0156	403,777	1,180,089	377	90	18.00	15.00	18.00	0.03
Kouroussa	KAG0157	403,630	1,180,100	368	90	18.00	3.00	4.00	<0.01
Kouroussa	KAG0157	403,630	1,180,100	368	90	18.00	12.00	15.00	0.01
Kouroussa	KAG0157	403,630	1,180,100	368	90	18.00	15.00	18.00	0.01
Kouroussa	KAG0158	403,622	1,179,893	365	90	18.00	12.00	15.00	<0.01
Kouroussa	KAG0158	403,622	1,179,893	365	90	18.00	15.00	18.00	<0.01
Kouroussa	KAG0159	403,674	1,179,899	371	90	18.00	12.00	15.00	<0.01
Kouroussa	KAG0159	403,674	1,179,899	371	90	18.00	15.00	18.00	0.02
Kouroussa	KAG0160	403,724	1,179,900	361	90	18.00	12.00	15.00	0.04
Kouroussa	KAG0160	403,724	1,179,900	361	90	18.00	15.00	18.00	<0.01
Kouroussa	KAG0161	404,928	1,179,695	401	90	18.00	12.00	15.00	<0.01
Kouroussa	KAG0161	404,928	1,179,695	401	90	18.00	15.00	18.00	<0.01
Kouroussa	KAG0162	404,875	1,179,692	401	90	18.00	12.00	15.00	<0.01
Kouroussa	KAG0162	404,875	1,179,692	401	90	18.00	15.00	18.00	0.02
Kouroussa	KAG0163	404,823	1,179,696	403	90	18.00	12.00	15.00	<0.01
Kouroussa	KAG0163	404,823	1,179,696	403	90	18.00	15.00	18.00	<0.01
Kouroussa	KAG0164	404,778	1,179,699	393	90	18.00	12.00	15.00	<0.01
Kouroussa	KAG0164	404,778	1,179,699	393	90	18.00	15.00	18.00	<0.01
Kouroussa	KAG0165	404,721	1,179,700	394	90	18.00	12.00	15.00	<0.01
Kouroussa	KAG0165	404,721	1,179,700	394	90	18.00	15.00	18.00	0.04
Kouroussa	KAG0166	404,677	1,179,699	395	90	18.00	12.00	15.00	0.01
Kouroussa	KAG0166	404,677	1,179,699	395	90	18.00	15.00	18.00	0.02
Kouroussa	KAG0167	404,636	1,179,695	392	90	18.00	12.00	15.00	0.02
Kouroussa	KAG0167	404,636	1,179,695	392	90	18.00	15.00	18.00	0.05
Kouroussa	KAG0168	404,579	1,179,687	387	90	18.00	12.00	15.00	<0.01
Kouroussa	KAG0168	404,579	1,179,687	387	90	18.00	15.00	18.00	0.02
Kouroussa	KAG0169	404,529	1,179,693	384	90	18.00	12.00	15.00	0.13
Kouroussa	KAG0169	404,529	1,179,693	384	90	18.00	15.00	18.00	0.13
Kouroussa	KAG0170	404,475	1,179,699	384	90	18.00	12.00	15.00	0.02
Kouroussa	KAG0170	404,475	1,179,699	384	90	18.00	15.00	18.00	<0.01
Kouroussa	KAG0171	404,424	1,179,694	377	90	18.00	12.00	15.00	<0.01
Kouroussa	KAG0171	404,424	1,179,694	377	90	18.00	15.00	18.00	0.02
Kouroussa	KAG0172	404,377	1,179,697	383	90	18.00	12.00	15.00	<0.01
Kouroussa	KAG0172	404,377	1,179,697	383	90	18.00	15.00	18.00	<0.01
Kouroussa	KAG0173	404,323	1,179,696	383	90	18.00	13.00	16.00	0.02
Kouroussa	KAG0173	404,323	1,179,696	383	90	18.00	16.00	18.00	0.02

Kouroussa	KAG0174	404,272	1,179,698	381	90	18.00	12.00	15.00	0.01
Kouroussa	KAG0174	404,272	1,179,698	381	90	18.00	15.00	18.00	0.05
Kouroussa	KAG0175	404,920	1,179,494	393	90	20.00	14.00	17.00	<0.01
Kouroussa	KAG0175	404,920	1,179,494	393	90	20.00	17.00	20.00	<0.01
Kouroussa	KAG0176	404,873	1,179,494	388	90	18.00	12.00	15.00	<0.01
Kouroussa	KAG0176	404,873	1,179,494	388	90	18.00	15.00	18.00	0.01
Kouroussa	KAG0177	404,822	1,179,495	390	90	18.00	12.00	15.00	<0.01
Kouroussa	KAG0177	404,822	1,179,495	390	90	18.00	15.00	18.00	<0.01
Kouroussa	KAG0178	404,772	1,179,496	393	90	18.00	12.00	15.00	0.07
Kouroussa	KAG0178	404,772	1,179,496	393	90	18.00	15.00	18.00	<0.01
Kouroussa	KAG0179	404,729	1,179,493	386	90	16.00	10.00	13.00	0.05
Kouroussa	KAG0179	404,729	1,179,493	386	90	16.00	13.00	16.00	0.01
Kouroussa	KAG0180	404,676	1,179,495	364	90	18.00	12.00	15.00	0.57
Kouroussa	KAG0180	404,676	1,179,495	364	90	18.00	15.00	18.00	0.18
Kouroussa	KAG0181	404,633	1,179,498	382	90	18.00	12.00	15.00	0.03
Kouroussa	KAG0181	404,633	1,179,498	382	90	18.00	15.00	18.00	0.08
Kouroussa	KAG0182	404,575	1,179,499	386	90	18.00	12.00	15.00	0.03
Kouroussa	KAG0182	404,575	1,179,499	386	90	18.00	15.00	18.00	0.02
Kouroussa	KAG0183	404,521	1,179,499	380	90	18.00	12.00	15.00	<0.01
Kouroussa	KAG0183	404,521	1,179,499	380	90	18.00	15.00	18.00	<0.01
Kouroussa	KAG0184	404,474	1,179,492	380	90	18.00	12.00	15.00	0.04
Kouroussa	KAG0184	404,474	1,179,492	380	90	18.00	15.00	18.00	0.1
Kouroussa	KAG0185	404,426	1,179,496	377	90	18.00	12.00	15.00	<0.01
Kouroussa	KAG0185	404,426	1,179,496	377	90	18.00	15.00	18.00	0.02
Kouroussa	KAG0186	404,377	1,179,493	377	90	18.00	12.00	15.00	0.02
Kouroussa	KAG0186	404,377	1,179,493	377	90	18.00	15.00	18.00	<0.01
Kouroussa	KAG0187	404,323	1,179,495	381	90	18.00	12.00	15.00	<0.01
Kouroussa	KAG0187	404,323	1,179,495	381	90	18.00	15.00	18.00	<0.01
Kouroussa	KAG0188	404,278	1,179,493	367	90	18.00	12.00	15.00	<0.01
Kouroussa	KAG0188	404,278	1,179,493	367	90	18.00	15.00	18.00	<0.01
Kouroussa	KAG0189	403,876	1,179,894	373	90	18.00	12.00	15.00	0.05
Kouroussa	KAG0189	403,876	1,179,894	373	90	18.00	15.00	18.00	<0.01
Kouroussa	KAG0190	403,825	1,179,898	356	90	18.00	12.00	15.00	<0.01
Kouroussa	KAG0190	403,825	1,179,898	356	90	18.00	15.00	18.00	0.04
Kouroussa	KAG0191	403,774	1,179,894	367	90	18.00	12.00	15.00	<0.01
Kouroussa	KAG0191	403,774	1,179,894	367	90	18.00	15.00	18.00	<0.01
Kouroussa	KAG0192	400,860	1,175,190	384	90	18.00	12.00	15.00	<0.01
Kouroussa	KAG0192	400,860	1,175,190	384	90	18.00	15.00	18.00	<0.01
Kouroussa	KAG0193	400,795	1,175,009	392	90	18.00	12.00	15.00	<0.01
Kouroussa	KAG0193	400,795	1,175,009	392	90	18.00	15.00	18.00	<0.01
Kouroussa	KAG0194	400,761	1,174,800	383	90	18.00	12.00	15.00	<0.01
Kouroussa	KAG0194	400,761	1,174,800	383	90	18.00	15.00	18.00	<0.01
Kouroussa	KAG0195	400,704	1,174,613	391	90	18.00	12.00	15.00	<0.01
Kouroussa	KAG0195	400,704	1,174,613	391	90	18.00	15.00	18.00	<0.01
Kouroussa	KAG0196	401,010	1,175,768	380	90	18.00	12.00	15.00	0.02
Kouroussa	KAG0196	401,010	1,175,768	380	90	18.00	15.00	18.00	0.01
Kouroussa	KAG0197	401,354	1,175,475	364	90	18.00	12.00	15.00	<0.01
Kouroussa	KAG0197	401,354	1,175,475	364	90	18.00	15.00	18.00	<0.01
Kouroussa	KAG0198	400,906	1,175,383	373	90	18.00	12.00	15.00	<0.01
Kouroussa	KAG0198	400,906	1,175,383	373	90	18.00	15.00	18.00	<0.01
Kouroussa	KAG0199	401,249	1,175,107	374	90	18.00	12.00	15.00	<0.01
Kouroussa	KAG0199	401,249	1,175,107	374	90	18.00	15.00	18.00	<0.01
Kouroussa	KAG0200	401,296	1,175,297	374	90	18.00	12.00	15.00	<0.01
Kouroussa	KAG0200	401,296	1,175,297	374	90	18.00	15.00	18.00	<0.01
Kouroussa	KAG0201	401,084	1,174,527	381	90	14.00	8.00	11.00	<0.01
Kouroussa	KAG0201	401,084	1,174,527	381	90	14.00	11.00	14.00	<0.01
Kouroussa	KAG0202	401,145	1,174,722	377	90	18.00	12.00	15.00	<0.01
Kouroussa	KAG0202	401,145	1,174,722	377	90	18.00	15.00	18.00	<0.01
Kouroussa	KAG0203	401,204	1,174,908	392	90	18.00	12.00	15.00	<0.01
Kouroussa	KAG0203	401,204	1,174,908	392	90	18.00	15.00	18.00	0.01
Kouroussa	KAG0204	401,794	1,175,603	379	90	18.00	12.00	15.00	0.02
Kouroussa	KAG0204	401,794	1,175,603	379	90	18.00	15.00	18.00	0.03
Kouroussa	KAG0205	401,690	1,175,220	372	90	18.00	12.00	15.00	0.01
Kouroussa	KAG0205	401,690	1,175,220	372	90	18.00	15.00	18.00	0.01

Kouroussa	KAG0206	401,640	1,175,024	372	90	18.00	12.00	15.00	<0.01
Kouroussa	KAG0206	401,640	1,175,024	372	90	18.00	15.00	18.00	<0.01
Kouroussa	KAG0207	401,590	1,174,837	377	90	18.00	12.00	15.00	0.01
Kouroussa	KAG0207	401,590	1,174,837	377	90	18.00	15.00	18.00	<0.01
Kouroussa	KAG0208	401,492	1,174,449	381	90	18.00	12.00	15.00	<0.01
Kouroussa	KAG0208	401,492	1,174,449	381	90	18.00	15.00	18.00	<0.01
Kouroussa	KAG0209	402,179	1,175,519	384	90	18.00	12.00	15.00	<0.01
Kouroussa	KAG0209	402,179	1,175,519	384	90	18.00	15.00	18.00	<0.01
Kouroussa	KAG0210	401,877	1,174,363	380	90	18.00	12.00	15.00	<0.01
Kouroussa	KAG0210	401,877	1,174,363	380	90	18.00	15.00	18.00	0.01
Kouroussa	KAG0211	402,130	1,175,325	383	90	18.00	12.00	15.00	<0.01
Kouroussa	KAG0211	402,130	1,175,325	383	90	18.00	15.00	18.00	<0.01
Kouroussa	KAG0212	401,934	1,174,555	378	90	18.00	12.00	15.00	0.02
Kouroussa	KAG0212	401,934	1,174,555	378	90	18.00	15.00	18.00	0.01
Kouroussa	KAG0213	402,076	1,175,132	381	90	18.00	12.00	15.00	<0.01
Kouroussa	KAG0213	402,076	1,175,132	381	90	18.00	15.00	18.00	<0.01
Kouroussa	KAG0214	402,027	1,174,941	371	90	18.00	12.00	15.00	<0.01
Kouroussa	KAG0214	402,027	1,174,941	371	90	18.00	15.00	18.00	<0.01
Kouroussa	KAG0215	401,986	1,174,751	365	90	18.00	12.00	15.00	<0.01
Kouroussa	KAG0215	401,986	1,174,751	365	90	18.00	15.00	18.00	<0.01
Kouroussa	KAG0216	402,574	1,175,439	386	90	18.00	12.00	15.00	0.02
Kouroussa	KAG0216	402,574	1,175,439	386	90	18.00	15.00	18.00	0.02
Kouroussa	KAG0217	402,520	1,175,243	385	90	18.00	12.00	15.00	0.02
Kouroussa	KAG0217	402,520	1,175,243	385	90	18.00	15.00	18.00	0.02
Kouroussa	KAG0218	402,473	1,175,050	386	90	18.00	12.00	15.00	0.02
Kouroussa	KAG0218	402,473	1,175,050	386	90	18.00	15.00	18.00	0.02
Kouroussa	KAG0219	402,423	1,174,859	387	90	18.00	12.00	15.00	0.01
Kouroussa	KAG0219	402,423	1,174,859	387	90	18.00	15.00	18.00	0.01
Kouroussa	KAG0220	402,373	1,174,665	386	90	18.00	12.00	15.00	0.02
Kouroussa	KAG0220	402,373	1,174,665	386	90	18.00	15.00	18.00	0.01
Kouroussa	KAG0221	402,269	1,174,280	383	90	18.00	12.00	15.00	0.01
Kouroussa	KAG0221	402,269	1,174,280	383	90	18.00	15.00	18.00	0.02
Kouroussa	KAG0222	402,319	1,174,473	381	90	19.00	13.00	16.00	0.02
Kouroussa	KAG0222	402,319	1,174,473	381	90	19.00	16.00	19.00	0.03
Kouroussa	KAG0223	402,956	1,175,352	374	90	18.00	12.00	15.00	0.01
Kouroussa	KAG0223	402,956	1,175,352	374	90	18.00	15.00	18.00	0.02
Kouroussa	KAG0224	402,916	1,175,160	381	90	18.00	12.00	15.00	0.01
Kouroussa	KAG0224	402,916	1,175,160	381	90	18.00	15.00	18.00	0.03
Kouroussa	KAG0225	402,861	1,174,968	382	90	11.00	5.00	8.00	0.01
Kouroussa	KAG0225	402,861	1,174,968	382	90	11.00	8.00	11.00	0.01
Kouroussa	KAG0226	402,819	1,174,778	383	90	18.00	12.00	15.00	0.02
Kouroussa	KAG0226	402,819	1,174,778	383	90	18.00	15.00	18.00	0.01
Kouroussa	KAG0227	402,758	1,174,595	389	90	18.00	12.00	15.00	0.02
Kouroussa	KAG0227	402,758	1,174,595	389	90	18.00	15.00	18.00	0.01
Kouroussa	KAG0228	402,714	1,174,396	388	90	18.00	12.00	15.00	0.02
Kouroussa	KAG0228	402,714	1,174,396	388	90	18.00	15.00	18.00	0.01
Kouroussa	KAG0229	402,656	1,174,201	383	90	18.00	12.00	15.00	<0.01
Kouroussa	KAG0229	402,656	1,174,201	383	90	18.00	15.00	18.00	0.03
Kouroussa	KAG0230	403,067	1,174,164	387	90	19.00	13.00	16.00	0.03
Kouroussa	KAG0230	403,067	1,174,164	387	90	19.00	16.00	19.00	0.03
Kouroussa	KAG0231	403,109	1,174,309	376	90	18.00	12.00	15.00	0.05
Kouroussa	KAG0231	403,109	1,174,309	376	90	18.00	15.00	18.00	0.07
Kouroussa	KAG0232	403,150	1,174,603	391	90	18.00	12.00	15.00	0.04
Kouroussa	KAG0232	403,150	1,174,603	391	90	18.00	15.00	18.00	0.01
Kouroussa	KAG0233	403,208	1,174,693	387	90	18.00	12.00	15.00	0.07
Kouroussa	KAG0233	403,208	1,174,693	387	90	18.00	15.00	18.00	0.01
Kouroussa	KAG0234	403,255	1,174,888	388	90	18.00	12.00	15.00	0.02
Kouroussa	KAG0234	403,255	1,174,888	388	90	18.00	15.00	18.00	0.02
Kouroussa	KAG0235	403,302	1,175,077	384	90	15.00	9.00	12.00	0.01
Kouroussa	KAG0235	403,302	1,175,077	384	90	15.00	12.00	15.00	<0.01
Kouroussa	KAG0236	403,497	1,174,227	412	90	18.00	12.00	15.00	0.02
Kouroussa	KAG0236	403,497	1,174,227	412	90	18.00	15.00	18.00	0.02
Kouroussa	KAG0237	403,546	1,174,414	413	90	18.00	12.00	15.00	0.03
Kouroussa	KAG0237	403,546	1,174,414	413	90	18.00	15.00	18.00	0.01

Kouroussa	KAG0238	403,598	1,174,612	409	90	18.00	12.00	15.00	0.03
Kouroussa	KAG0238	403,598	1,174,612	409	90	18.00	15.00	18.00	0.01
Kouroussa	KAG0239	403,644	1,174,802	386	90	19.00	13.00	16.00	0.09
Kouroussa	KAG0239	403,644	1,174,802	386	90	19.00	16.00	19.00	0.08
Kouroussa	KAG0240	403,695	1,174,996	387	90	18.00	12.00	15.00	<0.01
Kouroussa	KAG0240	403,695	1,174,996	387	90	18.00	15.00	18.00	0.01
Kouroussa	KAG0241	403,747	1,175,195	388	90	19.00	13.00	16.00	<0.01
Kouroussa	KAG0241	403,747	1,175,195	388	90	19.00	16.00	19.00	0.02
Kouroussa	KAG0242	404,143	1,175,094	289	90	18.00	12.00	15.00	<0.01
Kouroussa	KAG0242	404,143	1,175,094	289	90	18.00	15.00	18.00	0.01
Kouroussa	KAG0243	404,094	1,174,916	395	90	18.00	12.00	15.00	0.01
Kouroussa	KAG0243	404,094	1,174,916	395	90	18.00	15.00	18.00	<0.01
Kouroussa	KAG0244	403,986	1,174,721	364	90	18.00	12.00	15.00	<0.01
Kouroussa	KAG0244	403,986	1,174,721	364	90	18.00	15.00	18.00	<0.01
Kouroussa	KAG0245	403,986	1,174,553	405	90	18.00	12.00	15.00	<0.01
Kouroussa	KAG0245	403,986	1,174,553	405	90	18.00	15.00	18.00	<0.01
Kouroussa	KAG0246	403,938	1,174,337	406	90	18.00	12.00	15.00	<0.01
Kouroussa	KAG0246	403,938	1,174,337	406	90	18.00	15.00	18.00	<0.01
Kouroussa	KAG0247	403,883	1,174,142	404	90	18.00	12.00	15.00	<0.01
Kouroussa	KAG0247	403,883	1,174,142	404	90	18.00	15.00	18.00	<0.01
Kouroussa	KAG0248	404,282	1,174,055	388	90	18.00	12.00	15.00	<0.01
Kouroussa	KAG0248	404,282	1,174,055	388	90	18.00	15.00	18.00	<0.01
Kouroussa	KAG0249	404,334	1,174,253	388	90	20.00	14.00	17.00	0.02
Kouroussa	KAG0249	404,334	1,174,253	388	90	20.00	17.00	20.00	0.02
Kouroussa	KAG0250	404,385	1,174,448	395	90	18.00	12.00	15.00	0.02
Kouroussa	KAG0250	404,385	1,174,448	395	90	18.00	15.00	18.00	0.03
Kouroussa	KAG0251	404,432	1,174,638	391	90	18.00	12.00	15.00	<0.01
Kouroussa	KAG0251	404,432	1,174,638	391	90	18.00	15.00	18.00	<0.01
Kouroussa	KAG0252	404,481	1,174,827	386	90	18.00	12.00	15.00	<0.01
Kouroussa	KAG0252	404,481	1,174,827	386	90	18.00	15.00	18.00	<0.01
Kouroussa	KAG0253	404,533	1,175,021	387	90	18.00	12.00	15.00	<0.01
Kouroussa	KAG0253	404,533	1,175,021	387	90	18.00	15.00	18.00	<0.01
Kouroussa	KAG0254	404,821	1,174,556	375	90	18.00	12.00	15.00	<0.01
Kouroussa	KAG0254	404,821	1,174,556	375	90	18.00	15.00	18.00	<0.01
Kouroussa	KAG0255	404,793	1,174,386	385	90	20.00	14.00	17.00	0.03
Kouroussa	KAG0255	404,793	1,174,386	385	90	20.00	17.00	20.00	<0.01
Kouroussa	KAG0256	404,722	1,174,169	399	90	18.00	12.00	15.00	<0.01
Kouroussa	KAG0256	404,722	1,174,169	399	90	18.00	15.00	18.00	<0.01
Kouroussa	KAG0257	404,572	1,173,977	384	90	18.00	12.00	15.00	<0.01
Kouroussa	KAG0257	404,572	1,173,977	384	90	18.00	15.00	18.00	<0.01
Kouroussa	KAG0258	405,061	1,173,896	385	90	18.00	12.00	15.00	<0.01
Kouroussa	KAG0258	405,061	1,173,896	385	90	18.00	15.00	18.00	<0.01
Kouroussa	KAG0259	405,112	1,174,084	383	90	18.00	12.00	15.00	0.07
Kouroussa	KAG0259	405,112	1,174,084	383	90	18.00	15.00	18.00	<0.01
Kouroussa	KAG0260	405,212	1,174,475	376	90	18.00	12.00	15.00	<0.01
Kouroussa	KAG0260	405,212	1,174,475	376	90	18.00	15.00	18.00	<0.01
Kouroussa	KAG0261	405,264	1,174,665	376	90	19.00	13.00	16.00	<0.01
Kouroussa	KAG0261	405,264	1,174,665	376	90	19.00	16.00	19.00	<0.01
Kouroussa	KAG0262	405,312	1,174,857	372	90	18.00	12.00	15.00	0.04
Kouroussa	KAG0262	405,312	1,174,857	372	90	18.00	15.00	18.00	<0.01
Kouroussa	KAG0263	405,712	1,174,774	372	90	18.00	12.00	15.00	<0.01
Kouroussa	KAG0263	405,712	1,174,774	372	90	18.00	15.00	18.00	<0.01
Kouroussa	KAG0264	405,657	1,174,581	376	90	18.00	12.00	15.00	<0.01
Kouroussa	KAG0264	405,657	1,174,581	376	90	18.00	15.00	18.00	<0.01
Kouroussa	KAG0265	405,609	1,174,387	374	90	18.00	12.00	15.00	0.04
Kouroussa	KAG0265	405,609	1,174,387	374	90	18.00	15.00	18.00	<0.01
Kouroussa	KAG0266	405,551	1,174,197	381	90	20.00	11.00	17.00	<0.01
Kouroussa	KAG0266	405,551	1,174,197	381	90	20.00	17.00	20.00	0.01
Kouroussa	KAG0267	405,508	1,174,005	374	90	15.00	12.00	15.00	<0.01
Kouroussa	KAG0267	405,508	1,174,005	374	90	15.00	15.00	18.00	<0.01
Kouroussa	KAG0268	405,453	1,173,814	378	90	20.00	14.00	17.00	<0.01
Kouroussa	KAG0268	405,453	1,173,814	378	90	20.00	17.00	20.00	<0.01
Kouroussa	KAG0269	405,899	1,173,921	372	90	18.00	12.00	15.00	<0.01
Kouroussa	KAG0269	405,899	1,173,921	372	90	18.00	15.00	18.00	<0.01

Kouroussa	KAG0270	405,950	1,174,113	374	90	18.00	12.00	15.00	<0.01
Kouroussa	KAG0270	405,950	1,174,113	374	90	18.00	15.00	18.00	<0.01
Kouroussa	KAG0271	406,001	1,174,303	371	90	18.00	12.00	15.00	<0.01
Kouroussa	KAG0271	406,001	1,174,303	371	90	18.00	15.00	18.00	<0.01
Kouroussa	KAG0272	406,047	1,174,497	358	90	18.00	12.00	15.00	0.02
Kouroussa	KAG0272	406,047	1,174,497	358	90	18.00	15.00	18.00	<0.01
Kouroussa	KAG0273	403,359	1,175,274	388	90	18.00	12.00	15.00	<0.01
Kouroussa	KAG0273	403,359	1,175,274	388	90	18.00	15.00	18.00	<0.01
Kouroussa	KAG0274	404,868	1,174,748	381	90	18.00	12.00	15.00	<0.01
Kouroussa	KAG0274	404,868	1,174,748	381	90	18.00	15.00	18.00	0.01
Kouroussa	KAG0275	404,939	1,174,939	387	90	18.00	12.00	15.00	<0.01
Kouroussa	KAG0275	404,939	1,174,939	387	90	18.00	15.00	18.00	<0.01
Monebo	MAG0001	500,749	1,255,955	370	90	18.00	12.00	15.00	<0.01
Monebo	MAG0001	500,749	1,255,955	370	90	18.00	15.00	18.00	0.01
Monebo	MAG0002	500,559	1,255,752	363	90	18.00	12.00	15.00	<0.01
Monebo	MAG0002	500,559	1,255,752	363	90	18.00	15.00	18.00	<0.01
Monebo	MAG0003	500,810	1,256,166	364	90	18.00	12.00	15.00	0.03
Monebo	MAG0003	500,810	1,256,166	364	90	18.00	15.00	18.00	0.06
Monebo	MAG0004	500,751	1,255,757	351	90	18.00	1.00	4.00	<0.01
Monebo	MAG0004	500,751	1,255,757	351	90	18.00	12.00	15.00	<0.01
Monebo	MAG0004	500,751	1,255,757	351	90	18.00	15.00	18.00	0.01
Monebo	MAG0005	500,100	1,256,165	362	90	18.00	12.00	15.00	<0.01
Monebo	MAG0005	500,100	1,256,165	362	90	18.00	15.00	18.00	<0.01
Monebo	MAG0006	500,953	1,255,755	347	90	18.00	12.00	15.00	<0.01
Monebo	MAG0006	500,953	1,255,755	347	90	18.00	15.00	18.00	<0.01
Monebo	MAG0007	500,951	1,255,962	354	90	18.00	12.00	15.00	0.01
Monebo	MAG0007	500,951	1,255,962	354	90	18.00	15.00	18.00	<0.01
Monebo	MAG0008	501,147	1,255,960	348	90	18.00	12.00	15.00	0.01
Monebo	MAG0008	501,147	1,255,960	348	90	18.00	15.00	18.00	<0.01
Monebo	MAG0009	501,203	1,256,165	350	90	18.00	12.00	15.00	<0.01
Monebo	MAG0009	501,203	1,256,165	350	90	18.00	15.00	18.00	<0.01
Monebo	MAG0010	501,401	1,256,164	346	90	18.00	12.00	15.00	<0.01
Monebo	MAG0010	501,401	1,256,164	346	90	18.00	15.00	18.00	<0.01
Monebo	MAG0011	500,349	1,255,550	352	90	18.00	12.00	15.00	<0.01
Monebo	MAG0011	500,349	1,255,550	352	90	18.00	15.00	18.00	<0.01
Monebo	MAG0012	500,549	1,255,546	350	90	18.00	12.00	15.00	<0.01
Monebo	MAG0012	500,549	1,255,546	350	90	18.00	15.00	18.00	0.01
Monebo	MAG0013	500,155	1,255,338	353	90	18.00	12.00	15.00	<0.01
Monebo	MAG0013	500,155	1,255,338	353	90	18.00	15.00	18.00	<0.01
Monebo	MAG0014	500,754	1,255,547	345	90	18.00	12.00	15.00	0.01
Monebo	MAG0014	500,754	1,255,547	345	90	18.00	15.00	18.00	<0.01
Monebo	MAG0015	500,349	1,255,342	351	90	18.00	12.00	15.00	<0.01
Monebo	MAG0015	500,349	1,255,342	351	90	18.00	15.00	18.00	0.05
Monebo	MAG0016	500,151	1,255,138	348	90	18.00	12.00	15.00	<0.01
Monebo	MAG0016	500,151	1,255,138	348	90	18.00	15.00	18.00	<0.01
Monebo	MAG0017	500,605	1,256,359	375	90	18.00	12.00	15.00	<0.01
Monebo	MAG0017	500,605	1,256,359	375	90	18.00	15.00	18.00	<0.01
Monebo	MAG0018	500,554	1,256,263	371	90	18.00	12.00	15.00	0.02
Monebo	MAG0018	500,554	1,256,263	371	90	18.00	15.00	18.00	<0.01
Monebo	MAG0019	500,509	1,256,357	377	90	18.00	12.00	15.00	0.05
Monebo	MAG0019	500,509	1,256,357	377	90	18.00	15.00	18.00	0.08
Monebo	MAG0020	500,602	1,256,264	376	90	18.00	12.00	15.00	<0.01
Monebo	MAG0020	500,602	1,256,264	376	90	18.00	15.00	18.00	<0.01
Monebo	MAG0021	500,508	1,256,256	351	90	18.00	12.00	15.00	<0.01
Monebo	MAG0021	500,508	1,256,256	351	90	18.00	15.00	18.00	0.01
Monebo	MAG0022	500,602	1,256,166	370	90	18.00	12.00	15.00	0.01
Monebo	MAG0022	500,602	1,256,166	370	90	18.00	15.00	18.00	<0.01
Monebo	MAG0023	500,453	1,256,257	379	90	18.00	12.00	15.00	<0.01
Monebo	MAG0023	500,453	1,256,257	379	90	18.00	15.00	18.00	<0.01
Monebo	MAG0024	500,403	1,256,263	384	90	18.00	12.00	15.00	0.01
Monebo	MAG0024	500,403	1,256,263	384	90	18.00	15.00	18.00	0.06
Monebo	MAG0025	500,552	1,256,167	374	90	18.00	12.00	15.00	<0.01
Monebo	MAG0025	500,552	1,256,167	374	90	18.00	15.00	18.00	<0.01
Monebo	MAG0026	500,500	1,256,166	378	90	18.00	12.00	15.00	0.01

Monebo	MAG0026	500,500	1,256,166	378	90	18.00	15.00	18.00	<0.01
Monebo	MAG0027	500,452	1,256,165	384	90	18.00	12.00	15.00	<0.01
Monebo	MAG0027	500,452	1,256,165	384	90	18.00	15.00	18.00	0.01
Monebo	MAG0028	500,404	1,256,165	375	90	18.00	12.00	15.00	0.02
Monebo	MAG0028	500,404	1,256,165	375	90	18.00	15.00	18.00	0.03
Monebo	MAG0029	500,334	1,256,263	383	90	18.00	12.00	15.00	<0.01
Monebo	MAG0029	500,334	1,256,263	383	90	18.00	15.00	18.00	0.02
Monebo	MAG0030	500,356	1,256,167	379	90	18.00	12.00	15.00	<0.01
Monebo	MAG0030	500,356	1,256,167	379	90	18.00	15.00	18.00	<0.01
Monebo	MAG0031	500,363	1,256,363	383	90	18.00	12.00	15.00	<0.01
Monebo	MAG0031	500,363	1,256,363	383	90	18.00	15.00	18.00	0.05
Monebo	MAG0032	500,406	1,256,361	377	90	18.00	12.00	15.00	0.02
Monebo	MAG0032	500,406	1,256,361	377	90	18.00	15.00	18.00	0.02
Monebo	MAG0033	500,442	1,256,364	389	90	18.00	12.00	15.00	<0.01
Monebo	MAG0033	500,442	1,256,364	389	90	18.00	15.00	18.00	<0.01
Monebo	MAG0034	500,356	1,256,359	381	90	18.00	12.00	15.00	0.01
Monebo	MAG0034	500,356	1,256,359	381	90	18.00	15.00	18.00	<0.01
Monebo	MAG0035	500,450	1,256,557	377	90	18.00	12.00	15.00	0.02
Monebo	MAG0035	500,450	1,256,557	377	90	18.00	15.00	18.00	0.02
Monebo	MAG0036	500,451	1,256,467	382	90	18.00	12.00	15.00	<0.01
Monebo	MAG0036	500,451	1,256,467	382	90	18.00	15.00	18.00	<0.01
Monebo	MAG0037	500,406	1,256,462	381	90	18.00	12.00	15.00	<0.01
Monebo	MAG0037	500,406	1,256,462	381	90	18.00	15.00	18.00	0.01
Monebo	MAG0038	500,352	1,256,462	381	90	18.00	12.00	15.00	<0.01
Monebo	MAG0038	500,352	1,256,462	381	90	18.00	15.00	18.00	<0.01
Monebo	MAG0039	500,405	1,256,559	378	90	18.00	12.00	15.00	<0.01
Monebo	MAG0039	500,405	1,256,559	378	90	18.00	15.00	18.00	0.01
Monebo	MAG0040	500,500	1,256,562	377	90	18.00	12.00	15.00	<0.01
Monebo	MAG0040	500,500	1,256,562	377	90	18.00	15.00	18.00	<0.01
Monebo	MAG0041	500,355	1,256,359	380	90	18.00	12.00	15.00	0.01
Monebo	MAG0041	500,355	1,256,359	380	90	18.00	15.00	18.00	0.01
Monebo	MAG0042	500,605	1,256,561	378	90	18.00	12.00	15.00	0.01
Monebo	MAG0042	500,605	1,256,561	378	90	18.00	15.00	18.00	0.9
Monebo	MAG0043	500,609	1,256,463	375	90	18.00	12.00	15.00	<0.01
Monebo	MAG0043	500,609	1,256,463	375	90	18.00	15.00	18.00	0.02
Monebo	MAG0044	501,607	1,256,164	361	90	18.00	12.00	15.00	<0.01
Monebo	MAG0044	501,607	1,256,164	361	90	18.00	15.00	18.00	<0.01
Monebo	MAG0045	501,551	1,255,960	347	90	18.00	12.00	15.00	0.01
Monebo	MAG0045	501,551	1,255,960	347	90	18.00	15.00	18.00	<0.01
Monebo	MAG0046	501,747	1,255,960	357	90	18.00	12.00	15.00	<0.01
Monebo	MAG0046	501,747	1,255,960	357	90	18.00	15.00	18.00	<0.01
Monebo	MAG0047	501,555	1,255,767	353	90	18.00	12.00	15.00	0.02
Monebo	MAG0047	501,555	1,255,767	353	90	18.00	15.00	18.00	0.03
Monebo	MAG0048	501,348	1,255,953	352	90	18.00	12.00	15.00	<0.01
Monebo	MAG0048	501,348	1,255,953	352	90	18.00	15.00	18.00	<0.01
Monebo	MAG0049	501,350	1,255,755	351	90	18.00	12.00	15.00	<0.01
Monebo	MAG0049	501,350	1,255,755	351	90	18.00	15.00	18.00	<0.01
Monebo	MAG0050	501,152	1,255,753	346	90	18.00	12.00	15.00	<0.01
Monebo	MAG0050	501,152	1,255,753	346	90	18.00	15.00	18.00	<0.01
Monebo	MAG0051	501,153	1,255,549	356	90	18.00	12.00	15.00	0.01
Monebo	MAG0051	501,153	1,255,549	356	90	18.00	15.00	18.00	<0.01
Monebo	MAG0052	500,953	1,255,553	349	90	18.00	12.00	15.00	<0.01
Monebo	MAG0052	500,953	1,255,553	349	90	18.00	15.00	18.00	<0.01
Monebo	MAG0053	500,649	1,255,343	372	90	18.00	12.00	15.00	<0.01
Monebo	MAG0053	500,649	1,255,343	372	90	18.00	15.00	18.00	0.01
Monebo	MAG0054	500,754	1,255,338	355	90	18.00	12.00	15.00	<0.01
Monebo	MAG0054	500,754	1,255,338	355	90	18.00	15.00	18.00	<0.01
Monebo	MAG0055	500,549	1,255,342	353	90	18.00	12.00	15.00	<0.01
Monebo	MAG0055	500,549	1,255,342	353	90	18.00	15.00	18.00	<0.01
Monebo	MAG0056	500,546	1,255,139	358	90	18.00	12.00	15.00	<0.01
Monebo	MAG0056	500,546	1,255,139	358	90	18.00	15.00	18.00	0.02
Monebo	MAG0057	500,749	1,255,137	358	90	18.00	12.00	15.00	<0.01
Monebo	MAG0057	500,749	1,255,137	358	90	18.00	15.00	18.00	<0.01
Monebo	MAG0058	500,351	1,255,132	363	90	18.00	12.00	15.00	<0.01

Monebo	MAG0058	500,351	1,255,132	363	90	18.00	15.00	18.00	<0.01
Monebo	MAG0059	500,351	1,255,132	354	90	18.00	4.00	7.00	<0.01
Monebo	MAG0060	500,946	1,255,132	365	90	18.00	12.00	15.00	<0.01
Monebo	MAG0060	500,946	1,255,132	365	90	18.00	15.00	18.00	<0.01
Monebo	MAG0061	501,148	1,253,967	356	90	18.00	12.00	15.00	<0.01
Monebo	MAG0061	501,148	1,253,967	356	90	18.00	15.00	18.00	<0.01
Monebo	MAG0062	500,750	1,253,958	355	90	18.00	12.00	15.00	<0.01
Monebo	MAG0062	500,750	1,253,958	355	90	18.00	15.00	18.00	<0.01
Monebo	MAG0063	500,952	1,253,969	350	90	18.00	12.00	15.00	<0.01
Monebo	MAG0063	500,952	1,253,969	350	90	18.00	15.00	18.00	<0.01
Monebo	MAG0064	501,172	1,254,133	369	90	18.00	12.00	15.00	<0.01
Monebo	MAG0064	501,172	1,254,133	369	90	18.00	15.00	18.00	<0.01
Monebo	MAG0065	501,344	1,253,962	365	90	18.00	12.00	15.00	<0.01
Monebo	MAG0065	501,344	1,253,962	365	90	18.00	15.00	18.00	<0.01
Monebo	MAG0066	501,347	1,254,160	375	90	18.00	12.00	15.00	<0.01
Monebo	MAG0066	501,347	1,254,160	375	90	18.00	15.00	18.00	<0.01
Monebo	MAG0067	501,548	1,254,164	374	90	18.00	12.00	15.00	0.02
Monebo	MAG0067	501,548	1,254,164	374	90	18.00	15.00	18.00	0.01
Monebo	MAG0068	501,549	1,253,968	375	90	18.00	12.00	15.00	0.02
Monebo	MAG0068	501,549	1,253,968	375	90	18.00	15.00	18.00	<0.01
Monebo	MAG0069	501,350	1,253,774	360	90	18.00	12.00	15.00	<0.01
Monebo	MAG0069	501,350	1,253,774	360	90	18.00	15.00	18.00	<0.01
Monebo	MAG0070	501,148	1,253,773	353	90	18.00	12.00	15.00	<0.01
Monebo	MAG0070	501,148	1,253,773	353	90	18.00	15.00	18.00	<0.01
Monebo	MAG0071	501,697	1,253,773	378	90	18.00	12.00	15.00	<0.01
Monebo	MAG0071	501,697	1,253,773	378	90	18.00	15.00	18.00	<0.01
Monebo	MAG0072	501,548	1,253,776	369	90	18.00	12.00	15.00	<0.01
Monebo	MAG0072	501,548	1,253,776	369	90	18.00	15.00	18.00	<0.01
Monebo	MAG0073	500,950	1,253,769	359	90	18.00	12.00	15.00	<0.01
Monebo	MAG0073	500,950	1,253,769	359	90	18.00	15.00	18.00	<0.01
Monebo	MAG0074	501,947	1,253,543	388	90	18.00	12.00	15.00	<0.01
Monebo	MAG0074	501,947	1,253,543	388	90	18.00	15.00	18.00	<0.01
Monebo	MAG0075	501,747	1,253,544	378	90	18.00	12.00	15.00	<0.01
Monebo	MAG0075	501,747	1,253,544	378	90	18.00	15.00	18.00	<0.01
Monebo	MAG0076	501,554	1,253,544	365	90	18.00	12.00	15.00	<0.01
Monebo	MAG0076	501,554	1,253,544	365	90	18.00	15.00	18.00	<0.01
Monebo	MAG0077	501,350	1,253,540	359	90	18.00	12.00	15.00	<0.01
Monebo	MAG0077	501,350	1,253,540	359	90	18.00	15.00	18.00	<0.01
Monebo	MAG0078	500,949	1,253,539	374	90	18.00	12.00	15.00	<0.01
Monebo	MAG0078	500,949	1,253,539	374	90	18.00	15.00	18.00	<0.01
Monebo	MAG0079	501,146	1,253,539	375	90	18.00	12.00	15.00	<0.01
Monebo	MAG0079	501,146	1,253,539	375	90	18.00	15.00	18.00	<0.01
Monebo	MAG0080	501,355	1,253,077	378	90	18.00	12.00	15.00	0.01
Monebo	MAG0080	501,355	1,253,077	378	90	18.00	15.00	18.00	<0.01
Monebo	MAG0081	501,945	1,253,077	374	90	18.00	12.00	15.00	0.02
Monebo	MAG0081	501,945	1,253,077	374	90	18.00	15.00	18.00	<0.01
Monebo	MAG0082	501,751	1,253,080	363	90	18.00	12.00	15.00	<0.01
Monebo	MAG0082	501,751	1,253,080	363	90	18.00	15.00	18.00	<0.01
Monebo	MAG0083	502,148	1,253,075	390	90	18.00	12.00	15.00	<0.01
Monebo	MAG0083	502,148	1,253,075	390	90	18.00	15.00	18.00	<0.01
Monebo	MAG0084	501,517	1,252,880	367	90	18.00	12.00	15.00	<0.01
Monebo	MAG0084	501,517	1,252,880	367	90	18.00	15.00	18.00	<0.01
Monebo	MAG0085	501,757	1,252,882	366	90	18.00	12.00	15.00	0.01
Monebo	MAG0085	501,757	1,252,882	366	90	18.00	15.00	18.00	<0.01
Monebo	MAG0086	501,952	1,252,872	376	90	18.00	12.00	15.00	<0.01
Monebo	MAG0086	501,952	1,252,872	376	90	18.00	15.00	18.00	<0.01
Monebo	MAG0087	501,950	1,252,682	370	90	18.00	12.00	15.00	<0.01
Monebo	MAG0087	501,950	1,252,682	370	90	18.00	15.00	18.00	<0.01
Monebo	MAG0088	502,149	1,252,876	387	90	18.00	12.00	15.00	<0.01
Monebo	MAG0088	502,149	1,252,876	387	90	18.00	15.00	18.00	<0.01
Monebo	MAG0089	501,557	1,252,657	380	90	18.00	12.00	15.00	<0.01
Monebo	MAG0089	501,557	1,252,657	380	90	18.00	15.00	18.00	<0.01
Monebo	MAG0090	501,751	1,252,680	373	90	18.00	12.00	15.00	<0.01
Monebo	MAG0090	501,751	1,252,680	373	90	18.00	15.00	18.00	<0.01

Monebo	MAG0091	502,148	1,252,286	374	90	18.00	12.00	15.00	0.01
Monebo	MAG0091	502,148	1,252,286	374	90	18.00	15.00	18.00	<0.01
Monebo	MAG0092	502,149	1,252,679	379	90	18.00	12.00	15.00	<0.01
Monebo	MAG0092	502,149	1,252,679	379	90	18.00	15.00	18.00	0.01
Monebo	MAG0093	502,553	1,252,682	388	90	18.00	12.00	15.00	<0.01
Monebo	MAG0093	502,553	1,252,682	388	90	18.00	15.00	18.00	<0.01
Monebo	MAG0094	502,331	1,252,688	396	90	18.00	12.00	15.00	<0.01
Monebo	MAG0094	502,331	1,252,688	396	90	18.00	15.00	18.00	<0.01
Monebo	MAG0095	502,353	1,252,283	380	90	18.00	12.00	15.00	<0.01
Monebo	MAG0095	502,353	1,252,283	380	90	18.00	15.00	18.00	0.06
Monebo	MAG0096	501,953	1,252,285	381	90	18.00	12.00	15.00	<0.01
Monebo	MAG0096	501,953	1,252,285	381	90	18.00	15.00	18.00	<0.01
Monebo	MAG0097	502,353	1,252,285	380	90	18.00	12.00	15.00	<0.01
Monebo	MAG0097	502,353	1,252,285	380	90	18.00	15.00	18.00	0.01
Monebo	MAG0098	502,591	1,252,279	385	90	18.00	12.00	15.00	<0.01
Monebo	MAG0098	502,591	1,252,279	385	90	18.00	15.00	18.00	0.01
Monebo	MAG0099	502,748	1,252,283	380	90	18.00	12.00	15.00	<0.01
Monebo	MAG0099	502,748	1,252,283	380	90	18.00	15.00	18.00	<0.01
Monebo	MAG0100	502,950	1,252,274	382	90	18.00	12.00	15.00	<0.01
Monebo	MAG0100	502,950	1,252,274	382	90	18.00	15.00	18.00	<0.01
Monebo	MAG0101	502,949	1,252,080	378	90	18.00	12.00	15.00	0.01
Monebo	MAG0101	502,949	1,252,080	378	90	18.00	15.00	18.00	<0.01
Monebo	MAG0102	502,748	1,252,082	378	90	18.00	12.00	15.00	0.01
Monebo	MAG0102	502,748	1,252,082	378	90	18.00	15.00	18.00	<0.01
Monebo	MAG0103	502,549	1,252,082	380	90	18.00	12.00	15.00	<0.01
Monebo	MAG0103	502,549	1,252,082	380	90	18.00	15.00	18.00	<0.01
Monebo	MAG0104	502,348	1,252,082	380	90	18.00	12.00	15.00	0.01
Monebo	MAG0104	502,348	1,252,082	380	90	18.00	15.00	18.00	<0.01
Monebo	MAG0105	502,151	1,252,083	388	90	18.00	12.00	15.00	<0.01
Monebo	MAG0105	502,151	1,252,083	388	90	18.00	15.00	18.00	0.01
Monebo	MAG0106	502,749	1,251,884	377	90	18.00	12.00	15.00	<0.01
Monebo	MAG0106	502,749	1,251,884	377	90	18.00	15.00	18.00	<0.01
Monebo	MAG0107	503,951	1,251,883	379	90	18.00	12.00	15.00	<0.01
Monebo	MAG0107	503,951	1,251,883	379	90	18.00	15.00	18.00	0.01
Monebo	MAG0108	503,155	1,251,886	378	90	18.00	12.00	15.00	<0.01
Monebo	MAG0108	503,155	1,251,886	378	90	18.00	15.00	18.00	<0.01
Monebo	MAG0109	502,553	1,251,888	385	90	18.00	12.00	15.00	<0.01
Monebo	MAG0109	502,553	1,251,888	385	90	18.00	15.00	18.00	<0.01
Monebo	MAG0110	502,353	1,251,890	388	90	18.00	12.00	15.00	<0.01
Monebo	MAG0110	502,353	1,251,890	388	90	18.00	15.00	18.00	<0.01
Nzima	NAG0001	526,465	1,183,873	405	90	15.00	6.00	9.00	0.02
Nzima	NAG0002	526,514	1,183,876	412	90	15.00	7.00	10.00	<0.01
Nzima	NAG0003	526,565	1,183,873	410	90	14.00	7.00	10.00	0.02
Nzima	NAG0004	526,616	1,183,872	416	90	14.00	6.00	9.00	<0.01
Nzima	NAG0005	526,666	1,183,874	420	90	13.00	7.00	10.00	<0.01
Nzima	NAG0006	526,708	1,183,881	404	90	13.00	6.00	9.00	0.01
Nzima	NAG0007	526,762	1,183,874	397	90	13.00	7.00	10.00	<0.01
Nzima	NAG0008	526,806	1,183,871	401	90	13.00	6.00	9.00	<0.01
Nzima	NAG0009	526,613	1,183,673	399	90	15.00	6.00	9.00	<0.01
Nzima	NAG0010	526,662	1,183,677	405	90	15.00	6.00	9.00	0.03
Nzima	NAG0011	526,721	1,183,665	397	90	13.00	5.00	8.00	<0.01
Nzima	NAG0012	526,757	1,183,680	396	90	13.00	6.00	9.00	<0.01
Nzima	NAG0013	526,806	1,183,678	403	90	10.00	7.00	10.00	0.02
Nzima	NAG0014	526,863	1,183,678	394	90	8.00	5.00	8.00	0.01
Nzima	NAG0015	526,906	1,183,671	394	90	8.00	5.00	8.00	<0.01
Nzima	NAG0016	526,960	1,183,677	391	90	8.00	5.00	8.00	<0.01
Nzima	NAG0017	526,715	1,183,474	388	90	10.00	7.00	10.00	<0.01
Nzima	NAG0018	526,765	1,183,473	390	90	10.00	7.00	10.00	<0.01
Nzima	NAG0019	526,807	1,183,470	389	90	9.00	6.00	9.00	0.1
Nzima	NAG0020	526,865	1,183,472	387	90	9.00	5.00	7.00	<0.01
Nzima	NAG0021	526,916	1,183,476	383	90	11.00	8.00	11.00	0.01
Nzima	NAG0022	526,967	1,183,473	379	90	10.00	7.00	10.00	<0.01
Nzima	NAG0023	527,012	1,183,476	381	90	11.00	8.00	11.00	<0.01
Nzima	NAG0024	527,063	1,183,473	388	90	10.00	7.00	10.00	<0.01

Nzima	NAG0025	527,111	1,183,474	385	90	10.00	7.00	10.00	<0.01
Nzima	NAG0026	527,159	1,183,476	394	90	10.00	7.00	10.00	<0.01
Nzima	NAG0027	526,868	1,183,276	386	90	9.00	6.00	9.00	<0.01
Nzima	NAG0028	526,916	1,183,286	386	90	9.00	6.00	9.00	<0.01
Nzima	NAG0029	526,957	1,183,276	384	90	8.00	5.00	8.00	<0.01
Nzima	NAG0030	527,012	1,183,278	386	90	6.00	3.00	6.00	<0.01
Nzima	NAG0031	527,067	1,183,276	385	90	7.00	4.00	7.00	<0.01
Nzima	NAG0032	527,111	1,183,277	384	90	8.00	5.00	8.00	<0.01
Nzima	NAG0033	527,160	1,183,275	383	90	5.00	2.00	5.00	<0.01
Nzima	NAG0034	524,812	1,181,674	416	90	10.00	7.00	10.00	<0.01
Nzima	NAG0035	524,763	1,181,678	419	90	10.00	7.00	10.00	0.01
Nzima	NAG0036	524,766	1,181,474	412	90	12.00	9.00	12.00	<0.01
Nzima	NAG0037	524,818	1,181,474	413	90	10.00	7.00	10.00	0.01
Nzima	NAG0038	524,864	1,181,476	413	90	11.00	8.00	11.00	<0.01
Nzima	NAG0039	524,911	1,181,475	413	90	11.00	8.00	11.00	<0.01
Nzima	NAG0040	525,015	1,181,471	412	90	10.00	7.00	10.00	<0.01
Nzima	NAG0041	525,063	1,181,476	410	90	7.00	4.00	7.00	<0.01
Nzima	NAG0042	524,969	1,181,486	405	90	11.00	8.00	11.00	<0.01
Nzima	NAG0043	525,113	1,181,471	403	90	8.00	5.00	8.00	<0.01
Nzima	NAG0044	524,766	1,181,273	422	90	10.00	6.00	9.00	0.01
Nzima	NAG0045	524,817	1,181,269	417	90	10.00	7.00	10.00	<0.01
Nzima	NAG0046	524,863	1,181,272	420	90	10.00	7.00	10.00	0.01
Nzima	NAG0047	524,914	1,181,277	424	90	9.00	6.00	9.00	<0.01
Nzima	NAG0048	524,958	1,181,271	422	90	9.00	6.00	9.00	<0.01
Nzima	NAG0049	525,018	1,181,276	422	90	7.00	4.00	7.00	0.04
Nzima	NAG0050	525,065	1,181,274	429	90	10.00	7.00	10.00	<0.01
Nzima	NAG0051	525,108	1,181,279	418	90	7.00	4.00	7.00	<0.01
Nzima	NAG0052	524,868	1,181,675	417	90	11.00	8.00	11.00	0.04
Nzima	NAG0053	524,917	1,181,678	411	90	10.00	7.00	10.00	<0.01
Nzima	NAG0054	524,959	1,181,673	414	90	11.00	5.00	8.00	<0.01
Nzima	NAG0055	525,110	1,181,675	415	90	12.00	9.00	12.00	<0.01
Nzima	NAG0056	525,068	1,181,673	416	90	11.00	9.00	11.00	<0.01
Nzima	NAG0057	525,017	1,181,676	413	90	10.00	7.00	10.00	0.02
Nzima	NAG0058	523,309	1,185,379	404	90	9.00	2.00	5.00	0.05
Nzima	NAG0058	523,309	1,185,379	404	90	9.00	6.00	9.00	0.02
Nzima	NAG0059	523,318	1,185,574	392	90	7.00	4.00	7.00	0.02
Nzima	NAG0060	523,359	1,185,567	394	90	6.00	3.00	6.00	0.35
Nzima	NAG0061	523,408	1,185,575	390	90	7.00	2.00	5.00	0.09
Nzima	NAG0062	523,475	1,185,578	404	90	10.00	7.00	10.00	0.02
Nzima	NAG0063	523,519	1,185,577	394	90	11.00	8.00	11.00	0.05
Nzima	NAG0064	523,580	1,185,580	400	90	6.00	3.00	6.00	0.02
Nzima	NAG0065	523,604	1,185,572	400	90	6.00	3.00	6.00	0.03
Nzima	NAG0066	523,661	1,185,563	395	90	7.00	4.00	7.00	<0.01
Nzima	NAG0067	523,699	1,185,572	409	90	10.00	7.00	10.00	0.01
Nzima	NAG0068	523,774	1,185,585	408	90	10.00	7.00	10.00	0.01
Nzima	NAG0069	523,759	1,185,363	423	90	10.00	7.00	10.00	0.07
Nzima	NAG0070	523,719	1,185,378	423	90	10.00	7.00	10.00	0.03
Nzima	NAG0071	523,671	1,185,368	420	90	10.00	7.00	10.00	1.14
Nzima	NAG0072	523,620	1,185,359	425	90	9.00	6.00	9.00	0.16
Nzima	NAG0073	523,571	1,185,365	422	90	11.00	8.00	11.00	<0.01
Nzima	NAG0074	523,529	1,185,372	415	90	14.00	11.00	14.00	0.02
Nzima	NAG0075	523,765	1,185,173	425	90	7.00	4.00	7.00	0.02
Nzima	NAG0076	523,729	1,185,173	425	90	9.00	6.00	9.00	0.07
Nzima	NAG0077	523,667	1,185,181	424	90	7.00	4.00	7.00	0.02
Nzima	NAG0078	523,607	1,185,165	427	90	10.00	7.00	10.00	<0.01
Nzima	NAG0079	523,562	1,185,179	420	90	9.00	6.00	9.00	<0.01
Nzima	NAG0080	523,520	1,185,179	421	90	9.00	6.00	9.00	<0.01
Nzima	NAG0081	523,469	1,185,163	423	90	9.00	6.00	9.00	<0.01
Nzima	NAG0082	523,420	1,185,169	420	90	8.00	5.00	8.00	0.01
Nzima	NAG0083	523,366	1,185,175	414	90	7.00	4.00	7.00	0.01
Nzima	NAG0084	523,316	1,185,170	424	90	9.00	6.00	9.00	0.01
Nzima	NAG0085	523,401	1,185,371	417	90	14.00	11.00	14.00	<0.01
Nzima	NAG0086	526,517	1,184,272	416	90	7.00	4.00	7.00	<0.01
Nzima	NAG0087	526,463	1,184,275	424	90	8.00	5.00	8.00	<0.01

Nzima	NAG0088	526,415	1,184,270	416	90	5.00	2.00	5.00	<0.01
Nzima	NAG0089	526,381	1,184,271	418	90	5.00	2.00	5.00	<0.01
Nzima	NAG0090	526,300	1,184,282	413	90	6.00	3.00	6.00	0.01
Nzima	NAG0091	526,274	1,184,277	414	90	5.00	2.00	5.00	<0.01
Nzima	NAG0092	526,216	1,184,274	412	90	5.00	2.00	5.00	<0.01
Nzima	NAG0093	526,168	1,184,274	410	90	6.00	3.00	6.00	<0.01
Nzima	NAG0094	526,669	1,184,072	407	90	7.00	4.00	7.00	<0.01
Nzima	NAG0095	526,598	1,184,071	418	90	14.00	11.00	14.00	0.01
Nzima	NAG0096	526,571	1,184,075	422	90	15.00	12.00	15.00	0.02
Nzima	NAG0097	526,529	1,184,088	420	90	15.00	12.00	15.00	<0.01
Nzima	NAG0098	526,469	1,184,074	428	90	13.00	10.00	13.00	0.02
Nzima	NAG0099	526,416	1,184,074	415	90	8.00	5.00	8.00	0.02
Nzima	NAG0100	526,368	1,184,070	412	90	7.00	4.00	7.00	<0.01
Nzima	NAG0101	526,320	1,184,077	409	90	6.00	3.00	6.00	<0.01