

## **ASX ANNOUNCEMENT & MEDIA RELEASE**

**16 September 2015**

# **DRILLING TO RECOMMENCE AT TOGGENBURG**

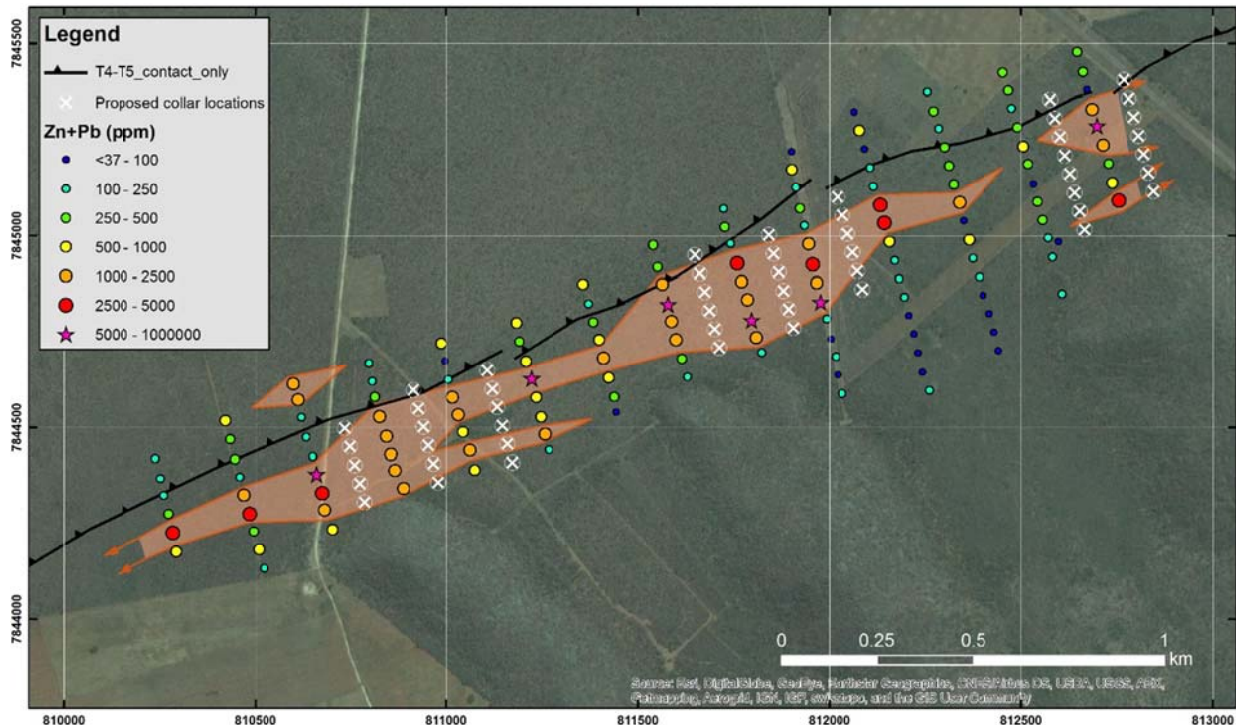
Sabre Resources is pleased to announce that reverse circulation (RC) drilling is about to recommence at the Toggenburg zinc-lead prospect in the Otavi Mountain Land of northern Namibia. The drill rig is presently on site at Toggenburg and will commence drilling once all preparations are complete.

Toggenburg is a large zinc-lead sulphide discovery that is around 2.8 km long by up to 300 m wide and is entirely buried beneath a veneer (less than 5 m thick) of sand and silt.

Around 50 shallow geochemical drillholes will infill existing drilling to fully define the distribution of higher grade mineralisation in the immediate subsurface. This will bring the drill density down to 100 x 50 m in the areas of interest.

This shallow infill drilling will provide the basis for planning deeper drill hole follow up at Toggenburg.

Managing Director David Chapman and Dr Matthew Painter are currently on site in Namibia.



**For further information regarding the Company's activities, please contact:**

David Chapman – Managing Director

Phone (08) 9481 7833

**Or consult our website:**

[www.sabresources.com](http://www.sabresources.com)

**Competent Person Declaration**

The information in this report that relates to Exploration Results is based on information compiled by David Chapman who is Managing Director of Sabre Resources Ltd, and who is a Member of The Australian Institute of Mining and Metallurgy. Mr Chapman has sufficient experience that is relevant to the style of mineralisation and type of deposit under consideration and to the activity that he is undertaking to qualify as a Competent Person as defined in the 2012 Edition of the "Australian Code for Reporting of Exploration Results, Mineral Resource and Ore Reserves". Mr Chapman consents to the inclusion in the report of the matters based on his information in the form and context in which it appears.

**Forward-Looking Statements**

This document may include forward-looking statements. Forward-looking statements include, but are not limited to, statements concerning Sabre Resources Ltd's planned exploration programme and other statements that are not historical facts. When used in this document, the words such as "could," "plan," "estimate," "expect," "intend," "may", "potential," "should," and similar expressions are forward-looking statements. Although Sabre believes that its expectations reflected in these forward-looking statements are reasonable, such statements involve risks and uncertainties and no assurance can be given that actual results will be consistent with these forward-looking statements.