

Artemis Resources Ltd

GOLD, COPPER and NICKEL - WEST PILBARA, WESTERN AUSTRALIA

Investor Update

ASX: ARV

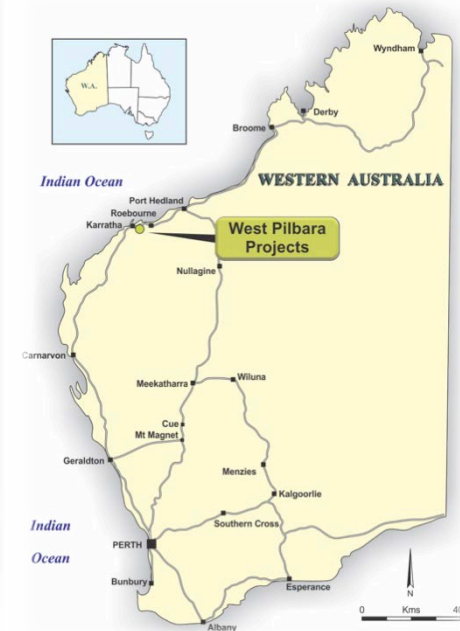
Mt Sholl Gold Nugget



Fortune Copper samples above EM anomalies



Location Plan



Disclaimer

This presentation has been prepared by Artemis Resources Limited (“ARV” or the “Company”). It should not be considered as an offer or invitation to subscribe for, or purchase any, securities in the Company or as an inducement to make an offer or invitation with respect to those securities. No agreement to subscribe for securities in the Company will be entered into on the basis of this presentation.

Forward Looking Statements

This presentation contains forecasts, projections and forward looking information. Such forecasts, projections and information are not a guarantee of future performance and involve unknown risks and uncertainties, many of which are out of Artemis' control. Actual results and developments will almost certainly differ materially from those expressed or implied. Artemis has not audited or investigated the accuracy or completeness of the information, statements and opinions contained in this presentation. To the maximum extent permitted by applicable laws, Artemis makes no representation and can give no assurance, guarantee or warranty, express or implied, as to, and takes no responsibility and assumes no liability for (1) the authenticity, validity, accuracy, suitability or completeness of, or any errors in or omission from, any information, statement or opinion contained in this presentation and (2) without prejudice to the generality of the foregoing, the achievement or accuracy of any forecasts, projections or other forward looking information contained or referred to in this presentation.

Throughout this presentation all figures are quoted in A\$ dollars unless otherwise stated. You should not act in reliance on this presentation material. This overview of the Company does not purport to be all inclusive or to contain all information which its recipients may require in order to make an informed assessment of Artemis' prospects. You should conduct your own investigation and perform your own analysis in order to satisfy yourself as to the accuracy and completeness of the information, statements and opinions contained in this presentation before making any investment decision.

Competent Person Statement

The information in this document that relates to Exploration Results is based on information compiled or reviewed by Edward Mead, who is a Member of The Australasian Institute of Mining and Metallurgy. Mr Mead is a Director of Artemis Resources Limited and is a consultant to the Company, and is employed by Doralda Pty Ltd. Mr Mead has sufficient experience which is relevant to the style of mineralisation and type of deposit under consideration and to the activity which he is undertaking to qualify as a Competent Person as defined in the 2012 Edition of the 'Australasian Code for Reporting of Exploration Results, Mineral Resources and Ore Reserves'. Mr Mead consents to the inclusion in the report of the matters based on his information in the form and context in which it appears.

The information in this document that relates to the Munni Munni Mineral Resource is based on information compiled by Mr R W Mosig who is a full time employee of Platina Resources Limited and who is a Fellow of the Australasian Institute of Mining and Metallurgy. Mr Mosig has sufficient experience which is relevant to the style of mineralisation and type of deposit under consideration and to the activity which he is undertaking to qualify as a Competent Person as defined in the 2012 Edition of the Australasian Code for Reporting of Exploration Results, Mineral Resources and Ore Reserves (“2012 JORC Code”). Mr Mosig consents to the inclusion in the report of the matters based on this information in the form and context in which it appears.

The information in this document that relates to Mineral Resources for the Munni Munni Project is based on estimates provided by Platina Resources Ltd and previously reported to the ASX. The information is extracted from the reports entitled “Munni Munni Factsheet” and is available on the Platina Resources Website and also within the Annual Report 2014 to Shareholders for Platina and is also available to view on the ASX website. The company confirms that it is not aware of any new information or data that materially affects the information included in the original market announcement and, in the case of estimates of Mineral Resources, that all material assumptions and technical parameters underpinning the estimates in the relevant market announcement continue to apply and have not materially changed. The company confirms that the form and context in which the Competent Person's findings are presented have not been materially modified from the original market announcement.

¹ Mt Clement Inferred Resource previously reported in ASX Announcement dated 26 July 2011

² Eastern Hills Mineral Resource JORC (2012) in ASX announcement dated 29 November 2013

³ Artemis to earn majority interest in Australia's largest PGE deposit in ASX announcement dated 5 August 2015

Investment Highlights

- Aim is to be the No.1 Explorer for Precious and Base Metals in the West Pilbara
- Artemis currently controls 2,157 Km² of this prolific yet under-explored region of Western Australia
- Artemis will be focusing on near surface, high grade gold, copper & nickel targets
- Numerous drill ready targets have been identified below historical workings
- All Government approvals and Aboriginal agreements* are in place for exploration programs in these areas
- Good location, excellent infrastructure, close to off-take partners and end user markets
- Highly competent and technical management team with an ethos to create shareholder value
- Artemis is a small focused explorer with minimal overheads
- Artemis has a vision to be the No.1 consolidator of fragmented projects in the West Pilbara
- Supportive shareholders

ARV Corporate Snapshot

Board of Directors

- **Edward Mead** (BSc Geol), MAusIMM) **Managing Director**
- **George Frangeskides** **Non-Exec Chairman**
- **Campbell Baird** (BEng Mining), MAusIMM) **Non-Exec Director**



Edward Mead (BSc Geol), MAusIMM) **Managing Director**

- Geologist with over 20 years experience in mining, exploration and project development.
- Geology Manager with Fox Resources and Technical Director with Resource Generation Limited.
- Currently a Director of ASX listed RAM Resources Limited.



George Frangeskides **Non-Executive Chairman**

- Lawyer with a broad range of experience gained from over 20 years in the legal and corporate advisory sectors in Australia and the United Kingdom.
- Currently Chairman of AIM listed Alba Mineral Resources Plc



Campbell Baird (BEng Mining), MAusIMM, AICD) **Non-Executive Director**

- Over 20 years of mining experience.
- Former CEO of Focus Minerals where through organic growth and acquisitions took the company to 175K oz gold producer.
- Project development in Finland for Vulcan Resources and was lead in multiple feasibility studies across multiple commodities for SRK Consulting.

Issued Share Capital (at June 2015)

ASX Code	ARV
Shares on Issue	1,338 million
Listed & Unlisted Options (\$0.003 June/July 2016)	205 million
Other Key Statistics	
Debt (30 June 2015)	\$0.9 million
Market Capitalisation (at \$0.001 per share)	\$1.4m
Cash and Investments (30 June 2015)	\$0.4 million

Major Shareholders (at June 2015)

Armengael Investments	13.51%
Pershing Australia Nominees	11.59%
Platina Resources	7.47%
Black Swan Global	6.39%
Top 20 Shareholders	68.02%

ARV Strategy for FY2015

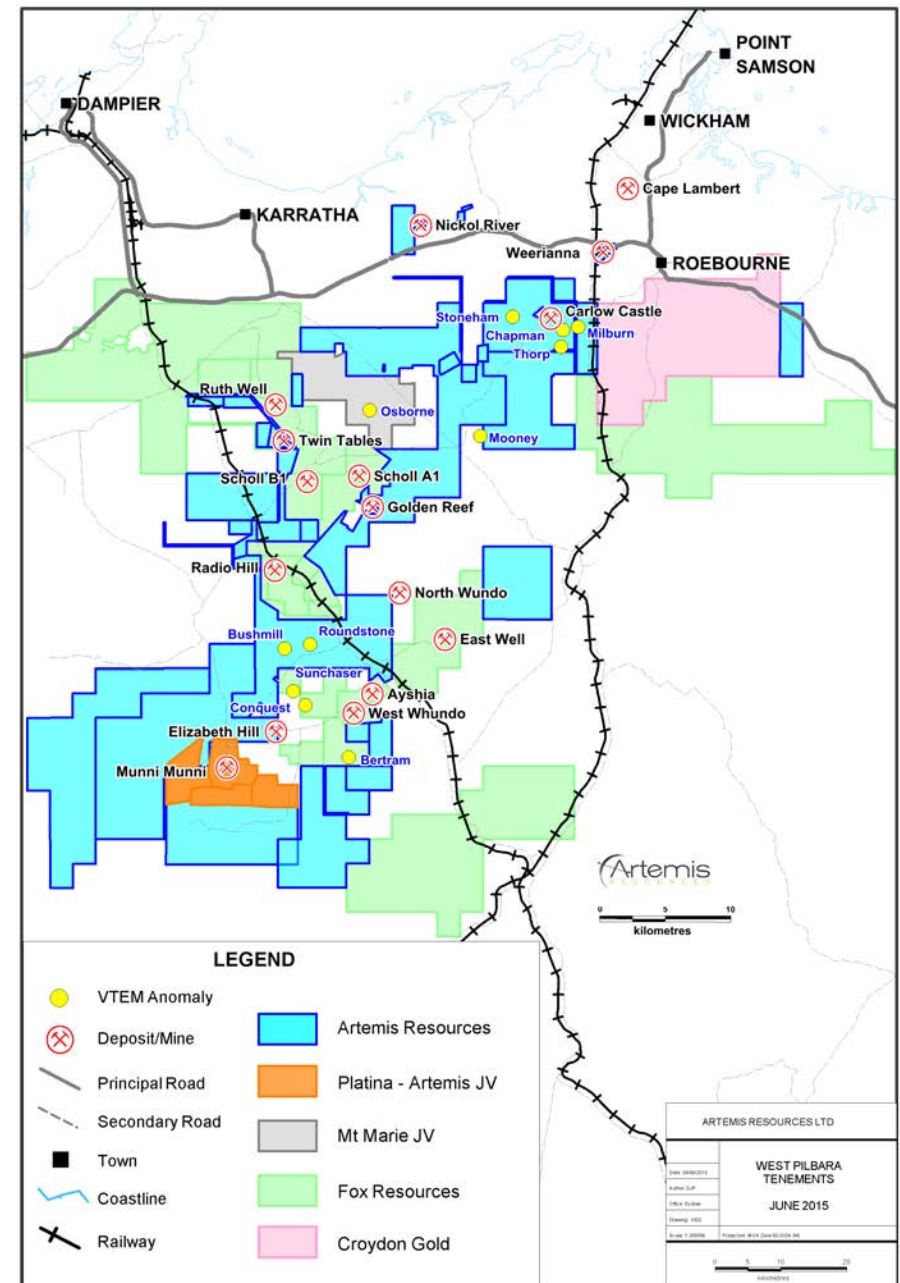
A Clear Company Vision

- To be the No.1 Explorer for Precious and Base Metals in the West Pilbara
- To consolidate and rationalise projects and tenements in the West Pilbara
- Exploration Focus on Gold, Copper, Nickel and PGE's
- Exploration Focus on near surface and high grade resource definition, and development opportunities

The Work Programmes to Generate Momentum

- Drilling programs into 3 electromagnetic conductors in the Carlow Castle area;
 - Good Luck (175m), Little Fortune (225m) and Fortune South (100m).
 - Historic shafts and workings mined copper from each prospect
- Undertake down-hole electromagnetics and plan for phase 2 drilling
- Undertake VTEM on the eastern side of the Munni Munni PGE Project.

Artemis is West Pilbara Focused All tenements within 50km of Karratha



ARV Milestones and Budget for FY2015/16

The proposed milestones, use of funds and budget for FY2015/16 are:

- Heritage surveys over key exploration targets
- Targeted RC drilling Programs on near surface base metals and coarse gold structures
- Complete down-hole electromagnetics
- Administration and Technical
- Budgeted expenditure over first 4 months \$400,000 AUD

The proposed follow on programs after month four:

- Phase 2 drilling to advance Good Luck, Little Fortune and Fortune South
- VTEM survey to identify conductors and anomalies along eastern contact of Munni Munni PGE project
- Continue to consolidate quality projects in the West Pilbara
- Expand exploration programs across key tenements to develop a critical mass of resources to allow mining

ARV West Pilbara Tenements

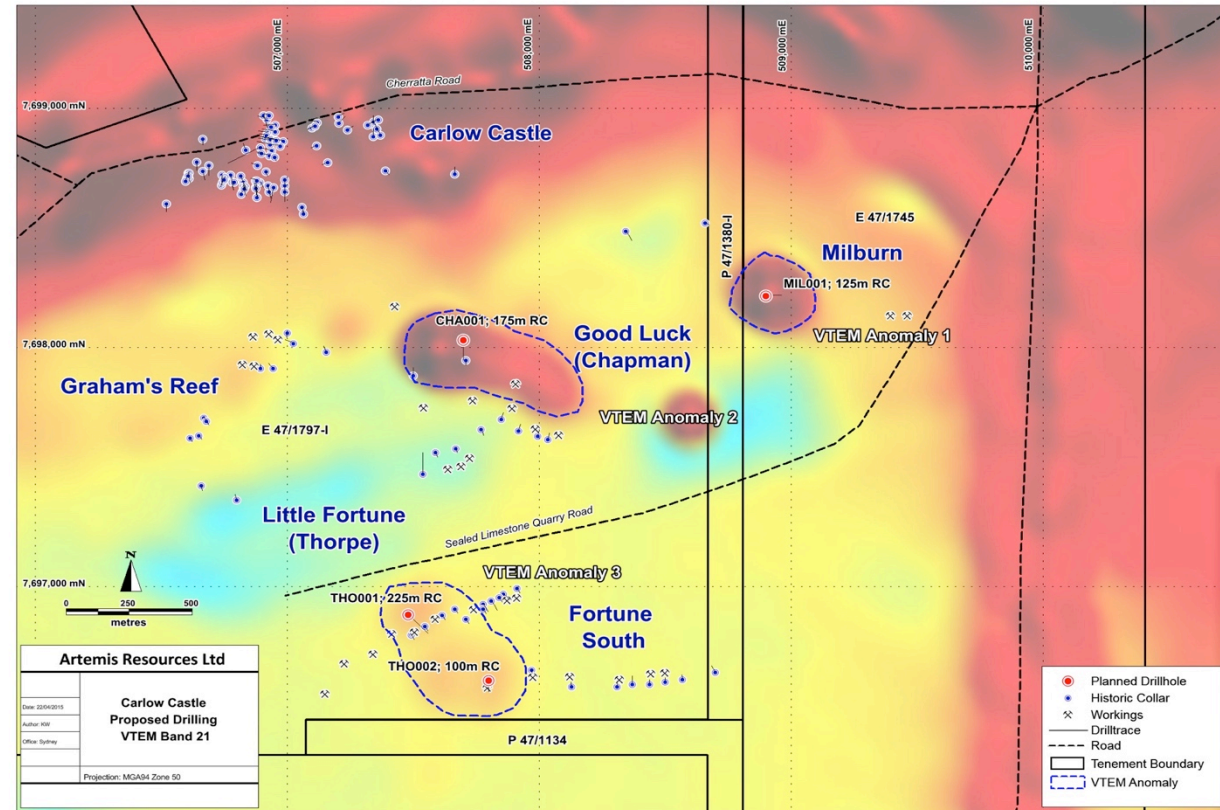
Overview

- Tenements covering 2,157 Km² and close to major infrastructure and on the coast
- **Walk-up drill targets** defined by 2007 electromagnetics for nickel and copper in Carlow Castle area
- Gold and Copper Resources at **Carlow Castle**:
 - Inferred Resource^{**}: **416Kt @ 2.9g/t Au, and 0.6% Cu, 40K oz Au and 2.5Kt Cu**
- Gold Resources at **Weerianna**:
 - Inferred Resource^{**}: **1Mt @ 2.2g/t Au, 70K oz Au**
- Platinum Group Element Resources at **Munni Munni**:
 - Resource^{*}: **24 Mt @ 2.9 g/t Platinum Group Element (PGE) + gold** (1.4Mt Inferred, 9.8Mt indicated and 12.4Mt Measured) (0.83Moz platinum. 1.14Moz palladium, 152Koz gold and 76Koz rhodium).
 - Munni Munni is the largest primary PGE Resource in Australia where currently no mining for PGE's occurs.
- All resources remain open along strike and at depth
- This is the first time all these resources have been owned by one company

ARV West Pilbara Tenements

Carlow Castle area

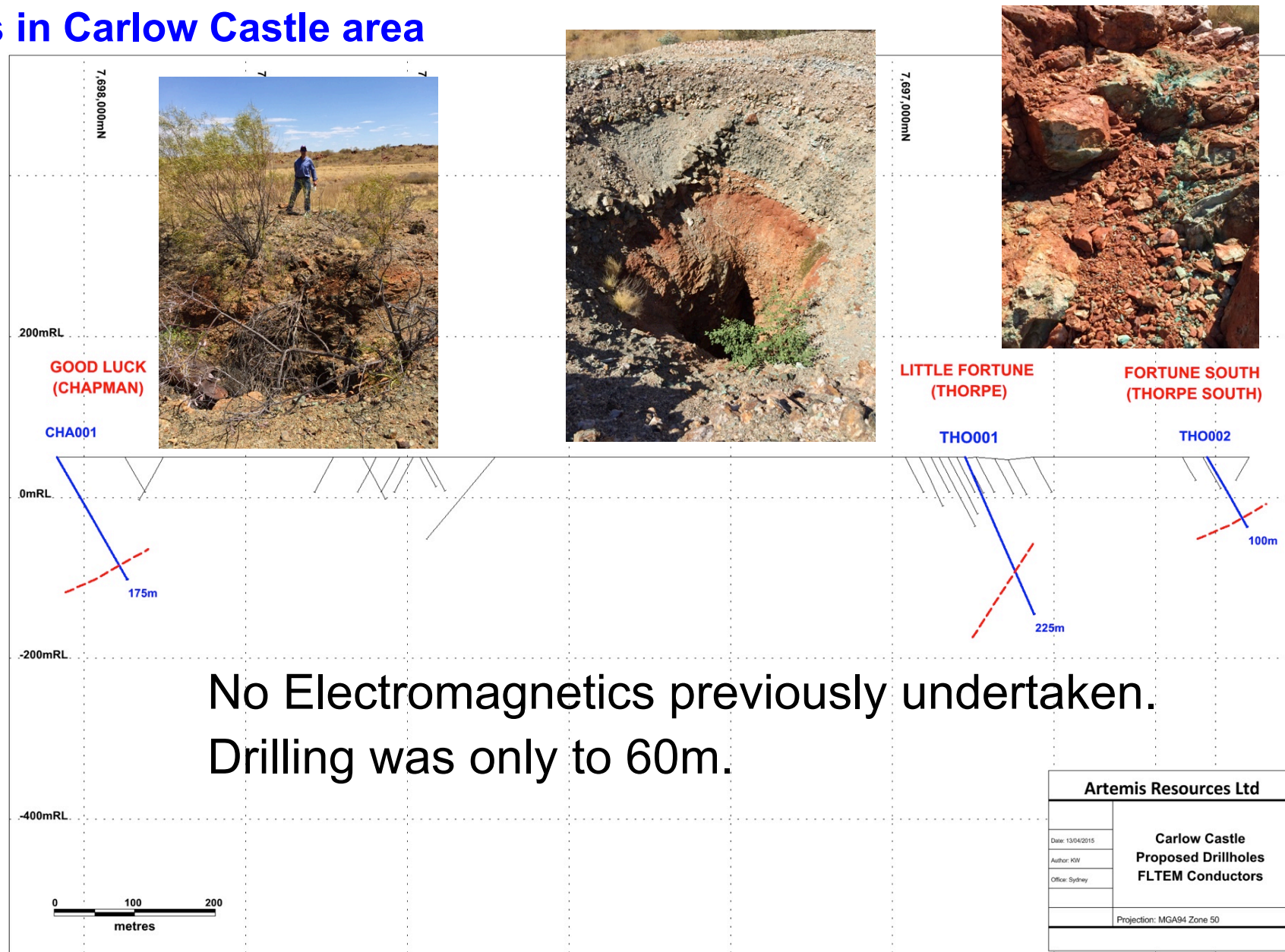
- Drill 3 RC drill holes (\$120K) into 3 well defined (by VTEM and FLTEM) targets:
 - Good Luck (175m),
 - Little Fortune (225m)
 - Fortune South (100m).
- Historic shaft workings mined copper from each prospect
- Complete down-hole electromagnetics after drilling. \$40K



ARV West Pilbara Tenements

Electromagnetics in Carlow Castle area

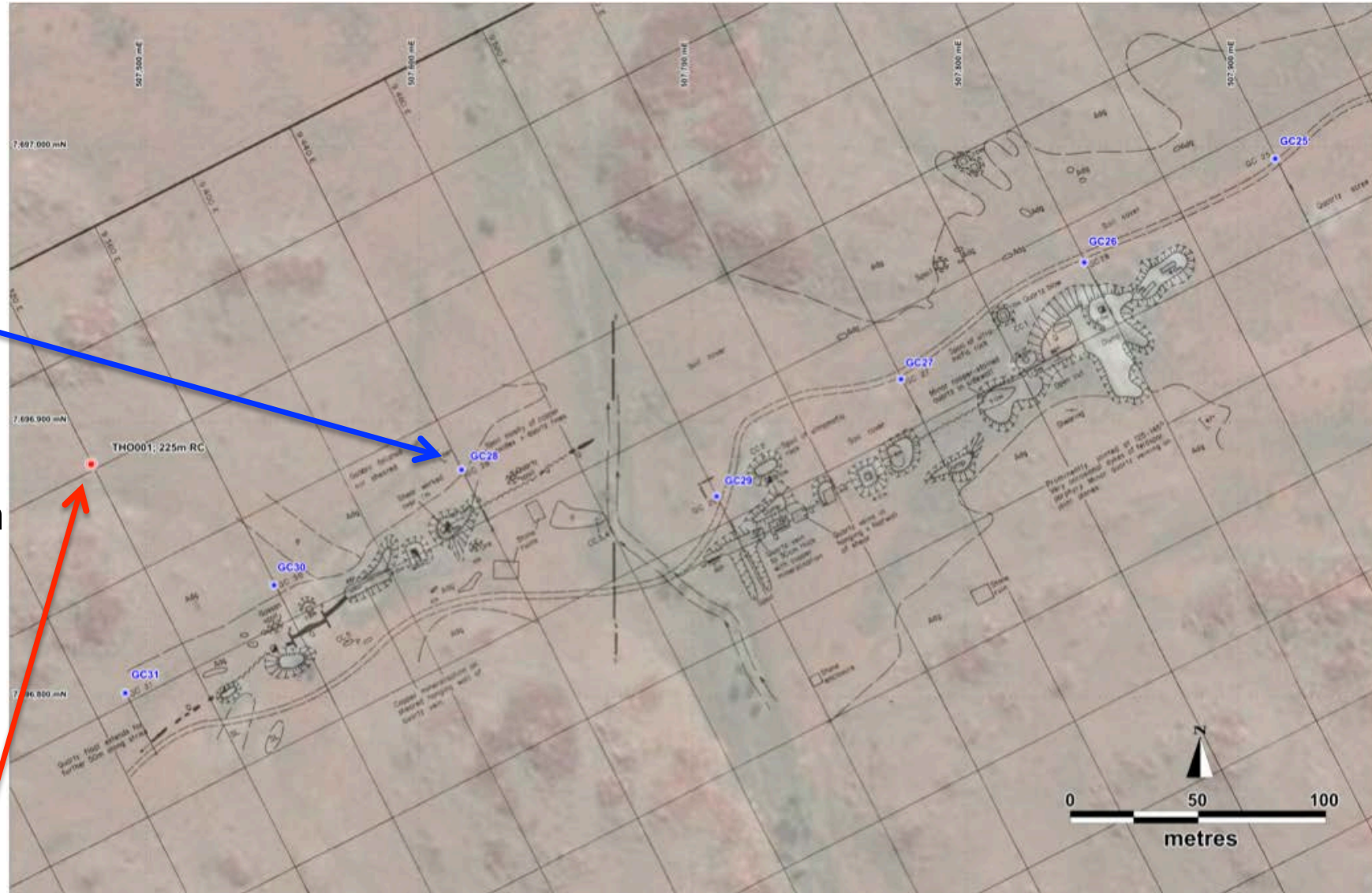
- Design drill holes in blue
- EM conductors/targets dashed red
- POW approved
- Heritage survey requested
- Previous drilling up to 60m depth, around historic workings. A large amount of the drilling was only assayed for gold



ARV West Pilbara Tenements

Little Fortune Mine Workings

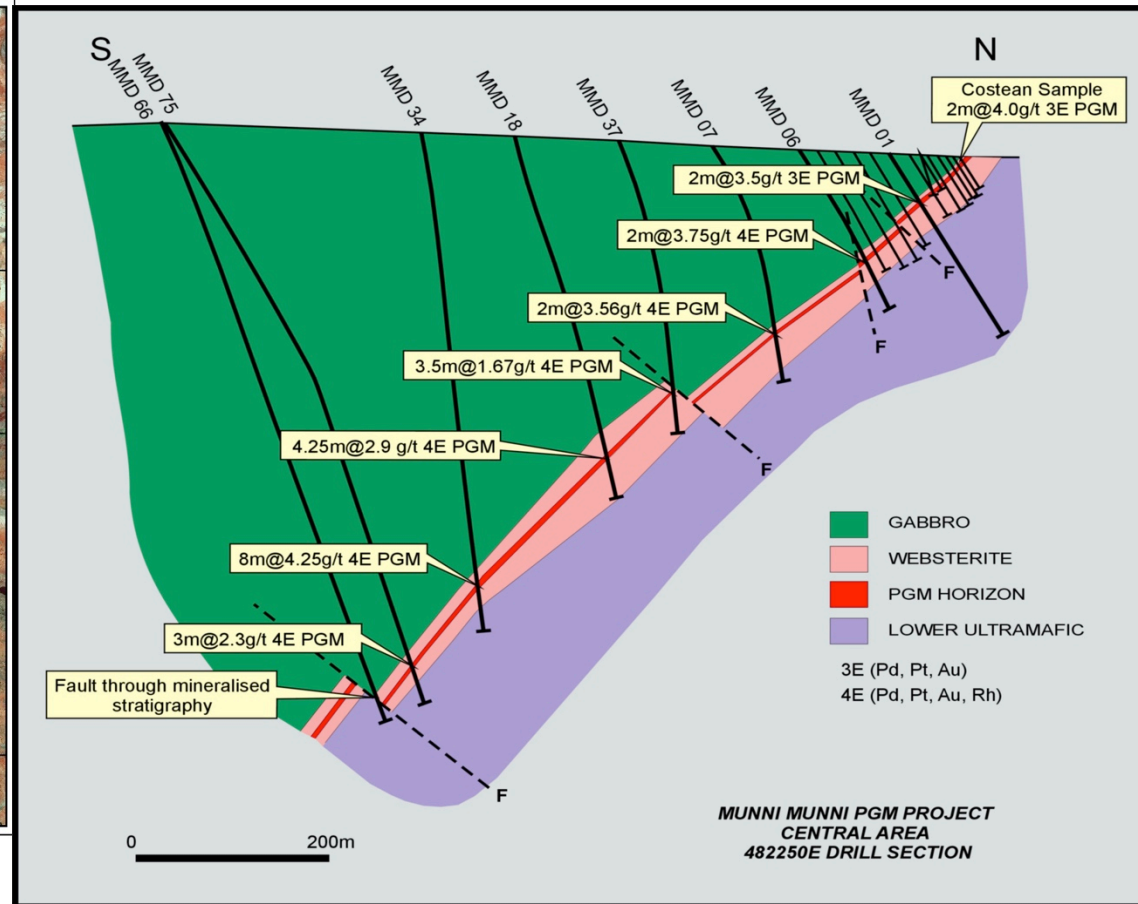
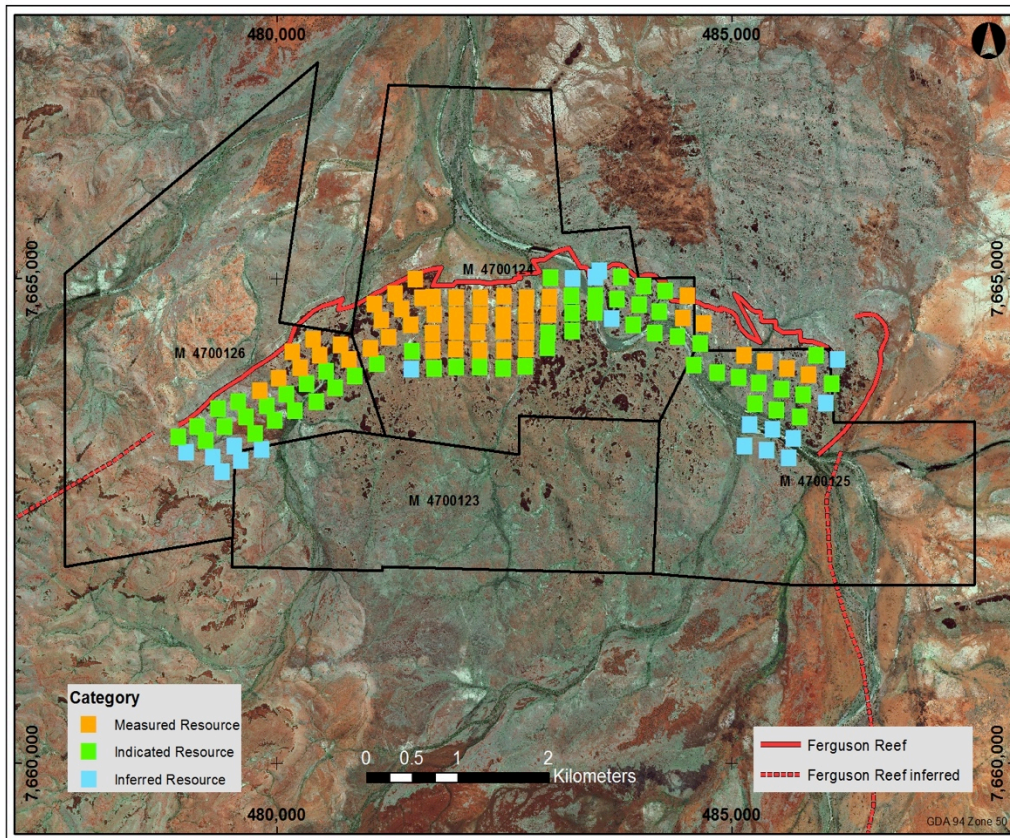
- 1986 RC drill holes (blue)
- The workings strike 600m
- GC28 drill log ends in 30% chalcopryite at 50m. All assays for gold
- Gold intercepts in all drill holes
- 433 tonnes of copper ore mined from 1901- 1964
- Design drill hole THO001



ARV West Pilbara Tenements

Munni Munni

- No electromagnetic surveys have been undertaken. Requires modern exploration techniques.
- VTEM survey to identify conductors and anomalies along eastern contact. Program planned for 1st half 2016.
- Munni Munni is a NEW asset in Artemis – Australia's largest undeveloped PGE project.



Summary: Value Proposition

Objectives

- Near term cash flow potential
- Active news flow
- Focus on gold production – potential to generate revenue through sale of nuggets
- Build on the existing resource base by exploration focus on Gold, Copper, Nickel and PGE's
- Focus is on near surface, high grade resource definition and development opportunities
- Create a critical mass of resource/s to enable larger scale economic mining
- Acquire / consolidate further quality West Pilbara projects that will create critical mass

Head Office:

Level 3, IBM Building
1060 Hay Street
West Perth WA 6005

Website:

www.artemisresources.com.au

Investor Contacts:

Edward Mead – Managing Director
ed@artemisresources.com.au
T + 61 8 9480 0459