

ASX ANNOUNCEMENT

Technical Advisory Board Appointed and Exploration Update

5th October 2015

Highlights

Technical Advisory Board

- A highly experienced Technical Advisory Board has been established to review Rumble's current assets and provide next stage implementation strategies

Sidewinder Nickel Sulphide Project – Rumble 100%

- Valuable technical data acquired including drilling, surface geochemical sampling, mapping and both ground and airborne geophysical survey data
- Project covers 96sq km's in the Windimurra Igneous Complex
- Limited previous drilling program of seven Reverse Circulation holes and three diamond drill holes intersected significant Ni, Cu and Co sulphide mineralisation including an intersection of 13m @ 0.91% Ni, 0.58% Cu, 0.08% Co from 104m in hole CPRC004
- Sidewinder contains multiple "walk-up" drill targets that were either untested or only partially tested by previous drilling.
- Technical team to put in place a staged exploration program with the view to drill the highly prospective nickel sulphide targets

Fraser Range Projects

- Technical team to review each asset & make recommendations for the next stages of exploration

Rumble Resources Ltd ("Rumble" or "the Company") is pleased to provide the following updates.

Technical Advisory Board

Rumble is pleased to announce BM Geological Services and a leading industry consultant to the Company's Technical Advisory Board. A highly experienced technical team has been established to review Rumble's current projects and provide next stage implementation strategies.

BM Geological Services Pty Ltd (BMGS) is a Western Australian based company servicing the global minerals industry. BMGS commenced business in 2003 filling a niche market servicing the junior mining houses who had acquired nickel properties from WMC Resources within the Kambalda district. These companies included Titan Resources, Donegal Mining/View Resources, Panoramic Resources, Goldfields Mine Management and Lightening Nickel; and later servicing WMC/BHP Billiton at the Perseverance Deeps Project at Leinster Nickel Operations, and Lionore at the Black Swan and Avalon Nickel Projects. BMGS is a partnership between Mr Darryl Mapleson and Mr Andrew Bewsher.

Mr Darryl Mapleson is a geologist with 26 years industry experience working for Dominion Mining, WMC Resources, Teck Cominco and Mincor Resources. He has worked on Feasibility Studies in Kambalda, Australia (nickel & gold), Vietnam (nickel), Mauritania (Au) and Finland (PGE & Au). He has substantial operational and exploration experience with nickel and gold, and was formerly the Chief Mine Geologist for Mincor Resources.



Rumble Resources Ltd

Suite 9, 36 Ord Street,
West Perth, WA 6005

T +61 8 6555 3980

F +61 8 6555 3981

rumbleresources.com.au

ASX RTR

Executives & Management

Mr Shane Sikora
Managing Director

Mr Andrew McBain
Non-executive Director

Mr Matthew Banks
Non-executive Director

Mr Michael Smith
Non-executive Director

Mr Bruno Seneque
Company Secretary

Mr Andrew Bewsher has 19 years industry experience in the Mining and Exploration Industry and has worked in Australia and Vietnam on gold and nickel projects. He has worked in the mining and exploration industry in Australia for Perilya Ltd in the Glengarry Basin of Western Australia; for Normandy Mining in the Yandal Greenstone Belt within the Yilgarn Craton of WA and for Mincor Resources in the Eastern Goldfields of the Yilgarn Craton, WA.

Dr Jon Hronsky is a consultant with more than 30 years of experience in the mineral exploration industry, primarily focused on project generation, technical innovation and exploration strategy development. Jon has worked across a diverse range of commodities and has particular expertise in targeting for nickel sulphide and gold deposits. His targeting work led to the discovery of the West Musgrave nickel sulphide province in Western Australia. Jon is currently Chairman of the Board of the Centre for Exploration Targeting in Western Australia and was the 2009 Society of Economic Geology Distinguished Lecturer. Jon is one of the Principals at geological consultancy Western Mining Services (Aust) Pty Ltd. Prior to joining WMS, Jon was Manager-Strategy & Generative Services for BHP Billiton Mineral Exploration and before that, Global Geoscience Leader for WMC Resources Ltd.

Sidewinder Project – 100% Rumble

Rumble's Sidewinder project is located 80 km southeast of Mt Magnet, Western Australia. The Sidewinder project comprises three licence applications, E58/484, E58/491 and E59/2119 covering an area of 96 km². The regional geology is dominated by the Windimurra Complex, which is a large differentiated layered ultramafic to mafic intrusion. It is the largest layered intrusive body of its type in Australia. Many of these types of complexes nationally and globally host economically significant deposits of Ni-Cu sulphides.

Rumble has acquired valuable technical data containing drilling, surface geochemical sampling, mapping and both ground and airborne geophysical survey data. Previous exploration identified significant nickel and copper sulphide mineralisation and multiple other targets that require further investigation

Previous historical exploration included a regional airborne electromagnetic survey (ReptEM), airborne magnetic and ground gravity surveys, which identified a number of potential targets within the current E59/2119 licence area.

Further exploration for nickel and copper was carried out by Flinders Mines Ltd (ASX: FMS) between 2009 to 2013. Work completed by Flinders Mines included surface sampling, geological mapping, ground Electromagnetic (EM) surveying and airborne EM surveying (VTEM) and drilling. Exploration drilling during 2012 and 2013, comprised seven Reverse Circulation (RC) holes (CPRC001 – CPRC007) and three diamond drill holes (PCPDD001 – CPDD003) targeting two discrete airborne electromagnetic (VTEM) targets, CG02 and CG39 – see figure 3 and 4.

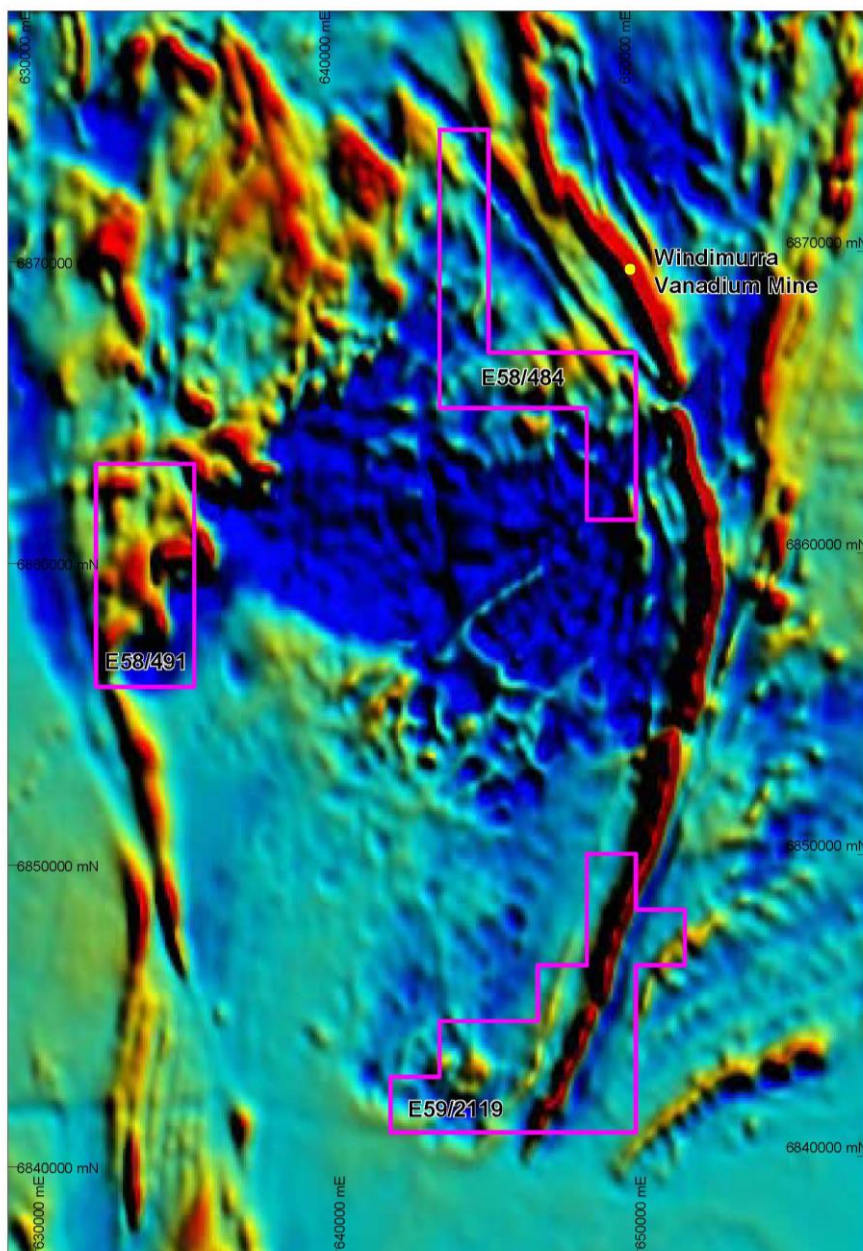


Figure 1 – Sidewinder Project Licences on TMI Aeromagnetic Imagery

The drilling intersected a layered sequence of gabbro, leucogabbro and pyroxenite, with the ultramafic (pyroxenite) units hosting sulphide mineralisation of varying intensity, from disseminated to massive. Sulphide composition is recorded as being pyrrhotite dominant, with varying quantities of chalcopyrite, pyrite and pentlandite

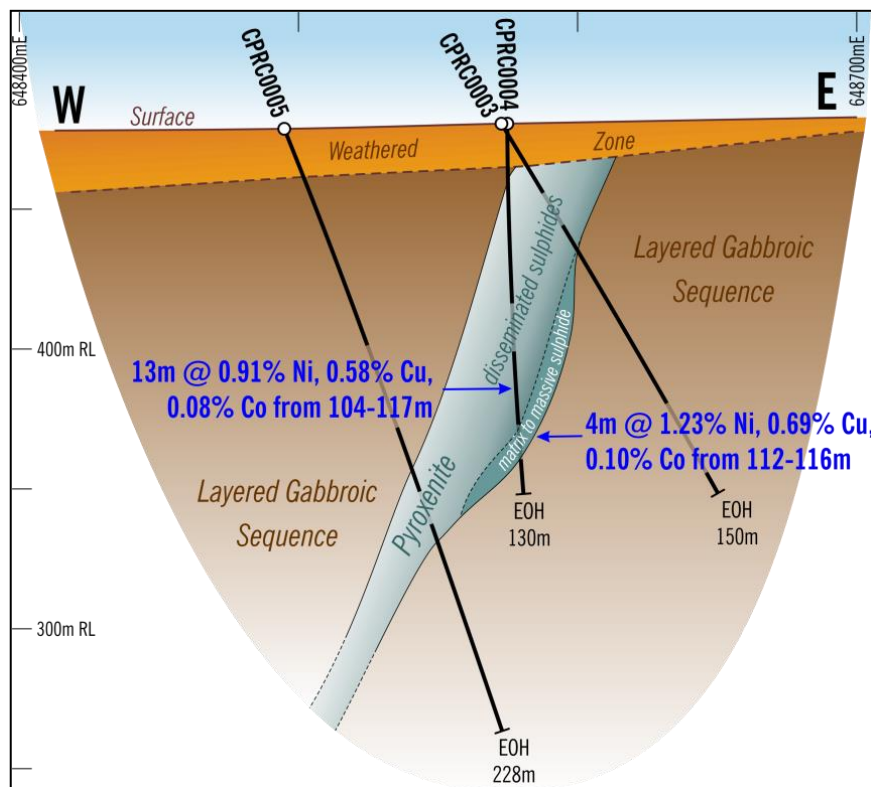


Figure 2 - Cross section 6846375mN target CG39, showing intersected sulphide mineralisation

Based on the historical exploration completed to date, Rumble believes there is potential for the discovery of further nickel sulphide mineralisation within E59/2119. The similarity of geophysical responses, observed geology and sulphide mineralisation at CG02 and CG39 suggests that these targets may be part of a wider mineralised intrusive system. Geophysical surveys, including Airborne EM surveying (VTEM) completed by Flinders Mines has identified a number of co-incident magnetic and electromagnetic anomalies within E59/2119, which remain to be followed-up by further exploration and drilling. Many of these anomalies are along strike and within similar lithologies to the mineralisation already identified.

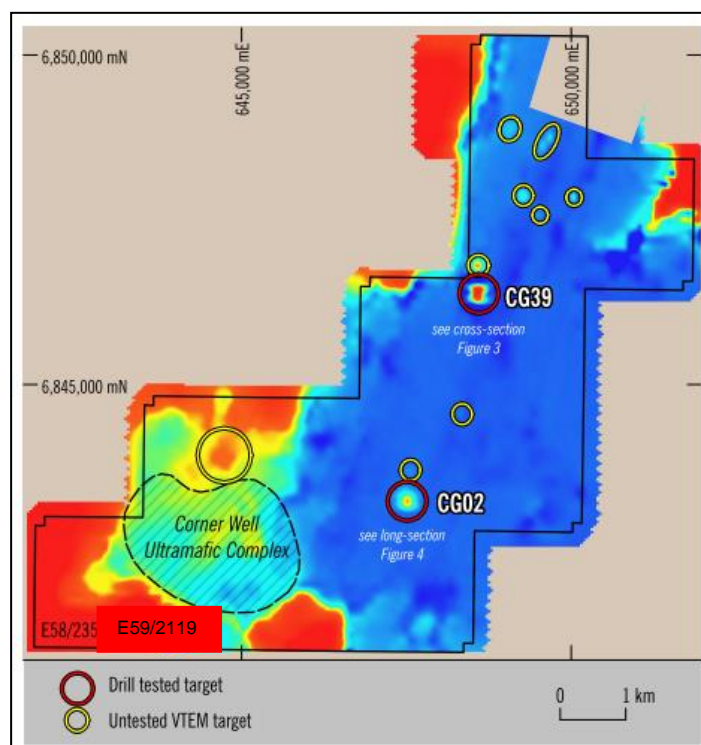


Figure 3 - Preliminary VTEM survey data, with drill tested targets CG02 and CG39

A number of significant intersections were recorded from the drilling, including;

Drillhole CPRC004

- 13m at 0.91% Ni, 0.58% Cu, 0.08% Co from 104m,
- Including, 4m at 1.23% Ni, 0.69% Cu, 0.10% Co from 112m.

Drill Hole CPRC005

- 4m at 0.59% Ni, 0.46% Cu, 0.05% Co from 152m,

Drill Hole CPDD003

- 0.67m at 1.52% Ni, 1.33% Cu, 0.13% Co from 234m

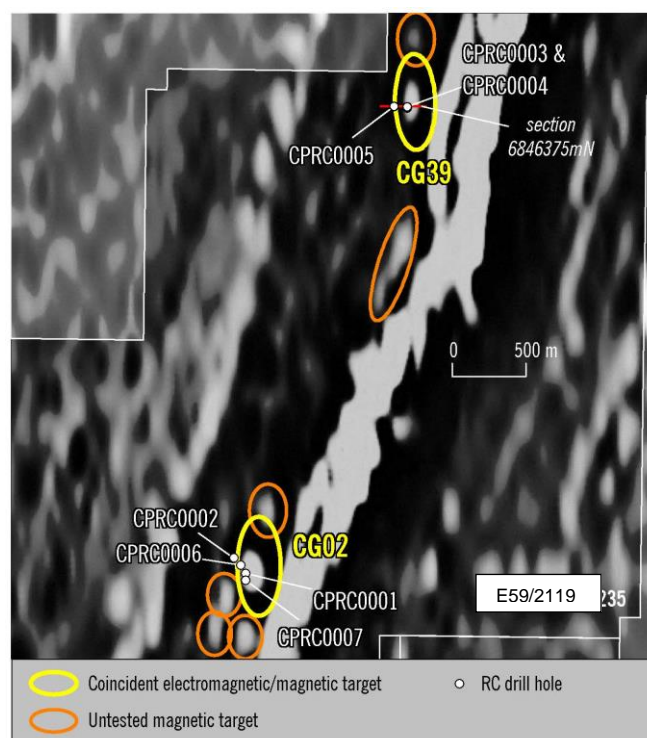


Figure 4 - RC drill collars and VTEM targets



Sidewinder Staged Exploration Process

Rumble is planning a systematic exploration program based on the advice of its highly experienced technical team. The technical team are reviewing the completed drilling, surface geochemical sampling, mapping and both ground and airborne geophysical surveys with a view to drill testing the highly prospective nickel sulphide targets. Following the internal review of the previous exploration undertaken at the Sidewinder project Rumble intends to provide additional information on the project and the planned exploration program that will commence, following the grant of the licences.

Fraser Range Projects Update

Rumbles technical advisory team will provide a collaborative review of the outcomes of the Company's recent drilling programs at the Big Red and Zanthus prospects, as well as continuing to advance preparations for the next stage of exploration at its other Fraser Range projects including the Thunderdome and Thunderstorm projects.

The Company will provide an update on upcoming exploration activities within its Fraser Range portfolio in the near future.

CEO Comments

Rumbles Managing Director, Mr Shane Sikora, said:

"We are very pleased to have secured the involvement of a highly experienced technical advisory board who are also exceptionally well-connected mining and exploration executives to assist in the next stage for Rumble. Their considerable technical expertise and strong networks will be of enormous value to Rumble moving forward."

"The Sidewinder Project provides Rumble with immediate "walk up" drill ready nickel targets in an area with known significant nickel sulphide mineralisation. The project fits our criteria of acquiring quality nickel assets to complement our exciting Fraser Range nickel sulphide exploration assets"

"The strategic review of the companies Sidewinder and Fraser Range Assets will objectively assess the best way to advance the exciting nickel sulphide assets which will provide Rumble shareholders with the best opportunity to find the next major Nickel Sulphide Discovery"

Shane Sikora
Managing Director

- ENDS -

For further information visit rumbleresources.com.au or contact enquiries@rumbleresources.com.au.

About Rumble Resources Ltd

Rumble Resources Ltd is an Australian based exploration company, officially admitted to the ASX on the 1st July 2011. Rumble was established with the aim of adding significant value to its current gold and base metal assets and will continue to look at mineral acquisition opportunities both in Australia and abroad.

Competent Persons Statement

The information in this report that relates to Exploration Results is based on information compiled by Mr Andrew Rust, who is a Member of the Australasian Institute of Mining & Metallurgy. Mr Rust is employed by Shearwater Australia Pty. Ltd. who is a consultant to Rumble Resources Limited and has sufficient experience relevant to the style of mineralisation and type of deposit under consideration and to the activity which he is undertaking to qualify as a Competent Person as defined in the 2012 Edition of the "Australasian Code for Reporting of Exploration Results, Mineral Resources and Ore Reserves". Mr Rust consents to the inclusion in the report of the matters based on his information in the form and context in which it appears.