



Device Data Delivered

# Disclaimer

This presentation is not a prospectus nor an offer for securities in any jurisdiction nor a securities recommendation. The information in this presentation is an overview, is based on publicly available information and internally developed data, and does not contain all information necessary for investment decisions. In making investment decisions in connection with any acquisition of securities, investors should rely upon their own examination of the assets and consult their own legal, business and/or financial advisors.

The information contained in this presentation has been prepared in good faith by Buddy Platform, Inc., and Potash Minerals, Ltd. however no representation nor warranty expressed or implied is made as to the accuracy, correctness, completeness or adequacy of any statements, estimates, opinions or other information contained in this presentation.

To the maximum extent permitted by law, Buddy Platform, Inc. and Potash Minerals, Ltd., their directors, officers, employees and agents disclaim liability for any loss or damage which may be suffered by any person through the use or reliance on anything contained in or omitted from this presentation.

Certain information in this presentation refers to the intentions of Buddy Platform, Inc., but these are not intended to be forecasts, forward looking statements or statements about future matters for the purposes of the Corporations Act or any other applicable law. The occurrence of events in the future are subject to risks, uncertainties and other factors that may cause Buddy Platform, Inc.'s actual results, performance or achievements to differ from those referred to in this presentation. Accordingly, Buddy Platform, Inc. and Potash Minerals, Ltd., their directors, officers, employees and agents do not give any assurance or guarantee that the occurrence of the events referred to in this presentation will actually occur as contemplated.



## David McLauchlan, CEO

11+ years business development @ Microsoft  
Chair, MTP (iPhone connectivity protocol) – USB-IF  
Chair, PDC (HP Printer connector) – CEA  
Technical Contributor – WiFi, IEEE PWG, Bluetooth, USB  
Recipient, Technology Achievement Award - CEA  
Founder, TVinteract (sold March 2014)  
3 patents

Technical Advisor, Bill & Melinda Gates Foundation



## Habib Heydarian, VP Product/Engineering

15+ years product development @ Microsoft  
(.NET Platform, Visual Studio, Robotics)  
Co-Founder, Lightyear Robotics (Robotic photographer)  
Founder, Perch (Remote house tours using UAVs)  
Technical Contributor, IntelliTrace software data recorder  
4 patents

Microsoft Ventures



# Board of Directors



David McLauchlan

CEO – Buddy Platform, Inc.; 11 years @ Microsoft Corporation;  
Technical Advisor - Bill & Melinda Gates Foundation.



Jeff MacDuff

VP, Mobile Products – Inrix (world's largest provider of traffic data);  
13 years @ Microsoft Corporation; Mentor – TechStars.



Alex Gounares

CEO – Concurix; ex CTO & EVP @ AOL;  
ex VP @ Microsoft Corporation & Technical Advisor to Bill Gates.



Wendy Gannon

Partner & COO – A2 Partners Pte Ltd; COO – Vadaro Corporation  
ex-VMWare, Motorola, Oracle, IBM.



Rick Borenstein

Chairman – Sequoia Partners, Inc.;  
Silicon Valley investor and VC fund LP.

# Board of Advisors



Ron Spector

Managing Director – Circini Partners; Venture Partner – Acumen Ventures; ex Investment Director @ Macquarie Venture Capital.



Jessica Michaels

Founder – Bread'n'Butter Digital; U.S. Portfolio Manager, Australian Fund; ex Senior Partner, GroupM; ex MEC; ex Wunderman.



Rick Borenstein

Chairman – Sequoia Partners, Inc.;  
Silicon Valley investor and VC fund LP.



Charlie Kindel

Director of Product, Alexa & Echo – Amazon.com;  
ex GM, Windows Phone @ Microsoft (21+ years).



Parag Garg

VP Engineering & Product (CTO), Connected Solutions @ Sears;  
ex Executive Tech Advisor to Paul Allen; ex Architect, Amazon Fire TV.



50+ billion connected things in 2020.

That's 50+ PB of data generated per day.

Much of it coming from cars, smart homes, wearables and appliances.

# But, the people who built your dishwasher are probably not “big data” experts.

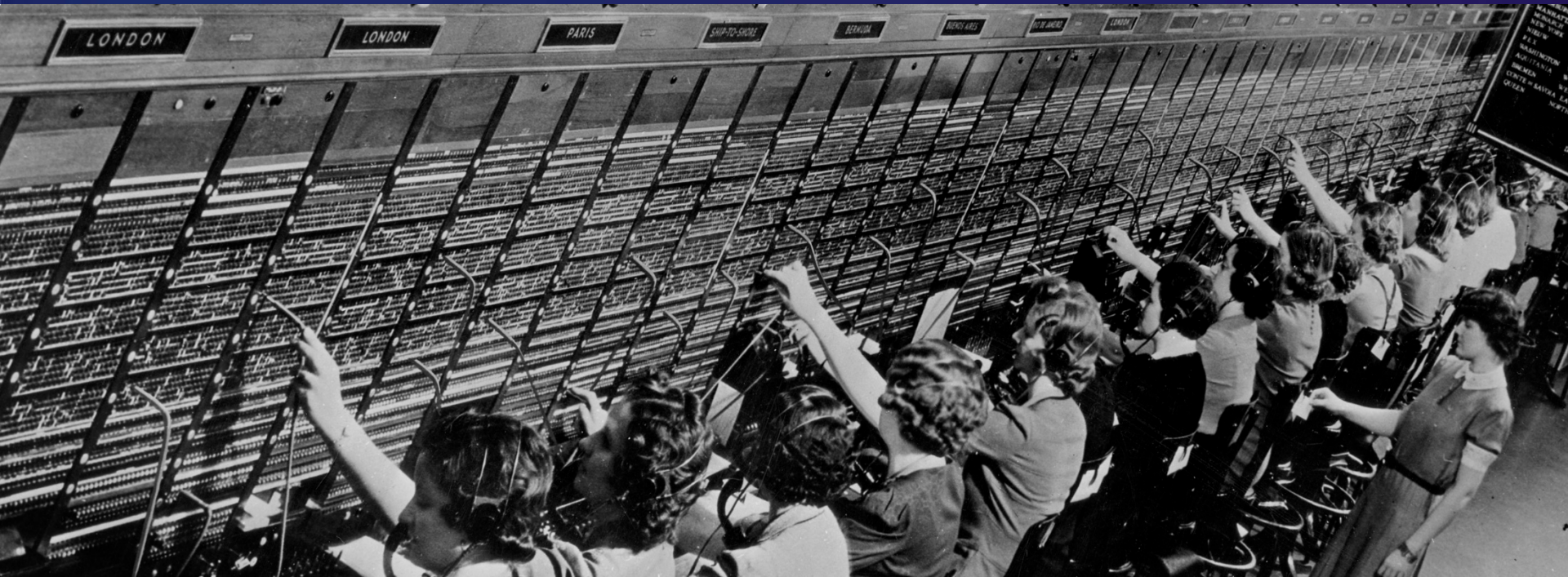


These companies are not equipped to manage, secure, access or get value from this amount or type of data.

They may have never run externally facing IT infrastructure.

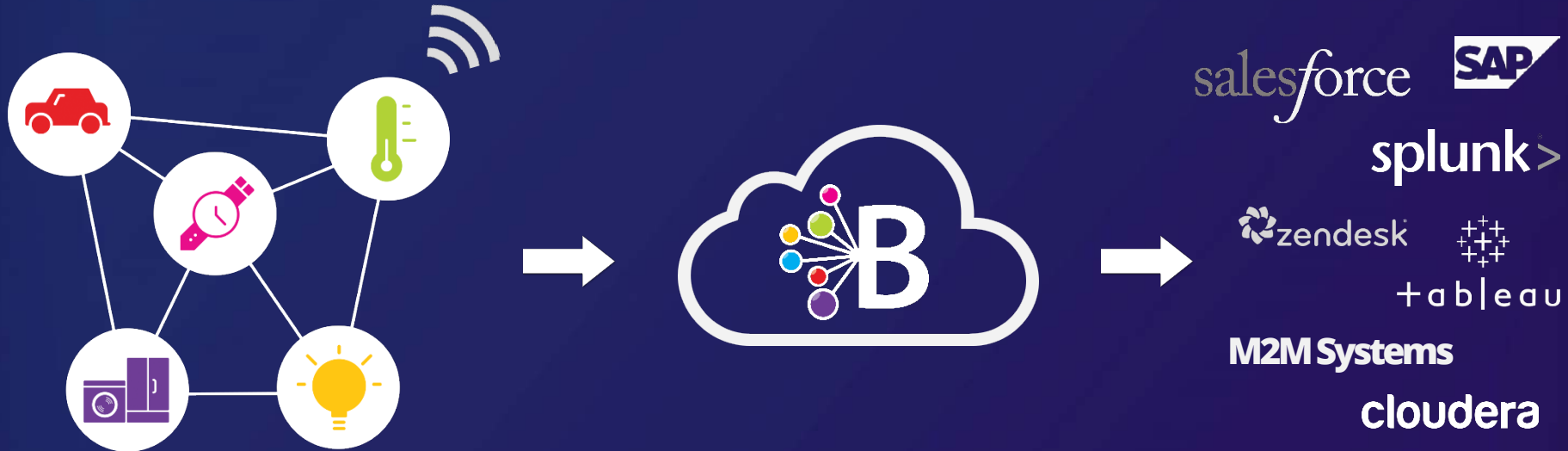
And for most – hiring developers to build & maintain a bespoke solution is just not feasible.

Companies need to send their IoT device data through an “exchange” to connect it with any number of systems that can make use of it.



# Introducing Buddy.

We take raw device & sensor data and push it into the world's most deployed BI & analysis tools, keeping it secure while making it useful and valuable.



Without hiring people who  
speak this...

A word cloud of various AWS services and technologies. The words are arranged in a roughly triangular shape, with 'Hubs' at the top. The colors of the words include red, green, yellow, orange, and purple. The words are: Hubs, AWS, Beanstalk, Blob, Cassandra, Linux, Memcached, ElastiCache, ELB, Architecture, Azure, Compute, Event, HDInsight, Stream, Analytics, Lambda, ISS, PostgreSQL, DynamoDB, Kafka, EC2, Redshift, MongoDB, SQS, S3, Kinesis, Hadoop, EMR, SNS, and Table.

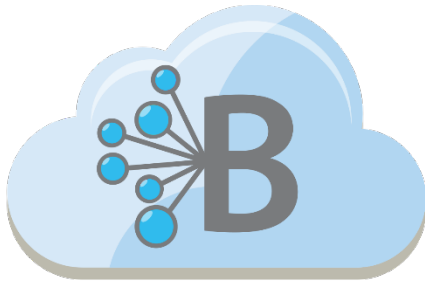
...any organization can  
ask questions of their  
device or sensor data.

And get answers in  
real-time.

Securely & privately.

(and it isn't just device manufacturers that need Buddy – any organization that deploys devices that generate data like kiosks, mobile apps, barcode readers, cash registers, entertainment systems, appliances, medical devices, factory equipment, auto OEMs, etc... we can service)

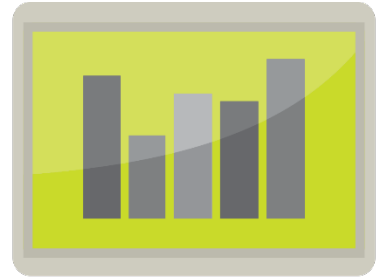
Any connected device. Just three steps.



 BuddyAPI



 BuddyVault

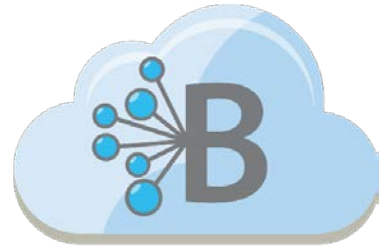


 BuddyView

# Devices stream telemetry to our cloud hosted endpoints...

```
{ "id": "efb62577a8a34f9a83938d649d8abc4b", "info":  
"$354898040645409,4002,2014/10/25,12:40:30,-  
34.86854,138.68582,91.0,0,0,0,0,0.9,342,0.0,13.0  
,15,1,0,95.3##$354898040645409,4002,2014/10/25,12:50:  
30,-  
34.86848,138.68579,84.8,0,0,0,0,0.8,342,0.0,13.0  
,15,1,0,95.3##$354898040645409,4002,2014/10/25,13:00:  
31,-34.86850,138.68584,84.0,0,0,0,0," , "unique_id":  
"efb62577a8a34f9a83938d649d8abc4b" }
```

(this is an example telemetry stream inbound to Buddy from a connector like the example to the right)



 **Buddy**API



(this OBD-II connector is an example of a device that can pull data from a vehicle and upload it to Buddy)



We “sandbox” customer data in their choice of the US, EU, China or Australia (soon Brazil).



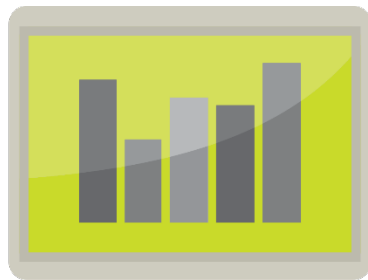
(“sandbox” means we keep each customer’s data separate and secure – customers choose us because we’re not reselling their proprietary data, nor using it to sell ads or other services)

# And through “APIs”, we answer questions that customers have of their data.

Example: “How many DeLorean cars in NYC have their air conditioning turned on right now?”

<https://api-us.buddyplatform.com/dashboards/bbbbbc.qPbbvGdxGdHp/55b1881c4e76cf0f5cbd8c01?reset=true>

(this is an “API” – **a**pplication **p**rogramming interface – now go ahead and open in Firefox or Chrome, since it is a live link)



 **BuddyView**

Plug those APIs  
into “control room”  
style dashboards.

No developers nor  
BI tools needed.



[Click on the image for a live demonstration \(example only\)](#)



cloudera

salesforce



splunk>

Or, use Buddy integrations with BI tools to allow teams to make business decisions with live device data.

Even better – natively integrate into an M2M system or plug into a “big data” system for deeper analytics.

# How Buddy drives revenue.

## Data In (to Buddy)

Monthly access fee  
Storage per TB.

(starts at \$1,000/mo + \$150/TB for storage)

## Data Out (to customer)

Visualizations & dashboards  
Business tool integrations  
M2M transactions  
Hadoop/big data bulk exports

(BI integrations & dashboards start at \$1,500/mo per seat;  
bulk data exports start at \$5,000/mo)

## On-Premise

Setup fee +  
recurring  
maintenance fee.

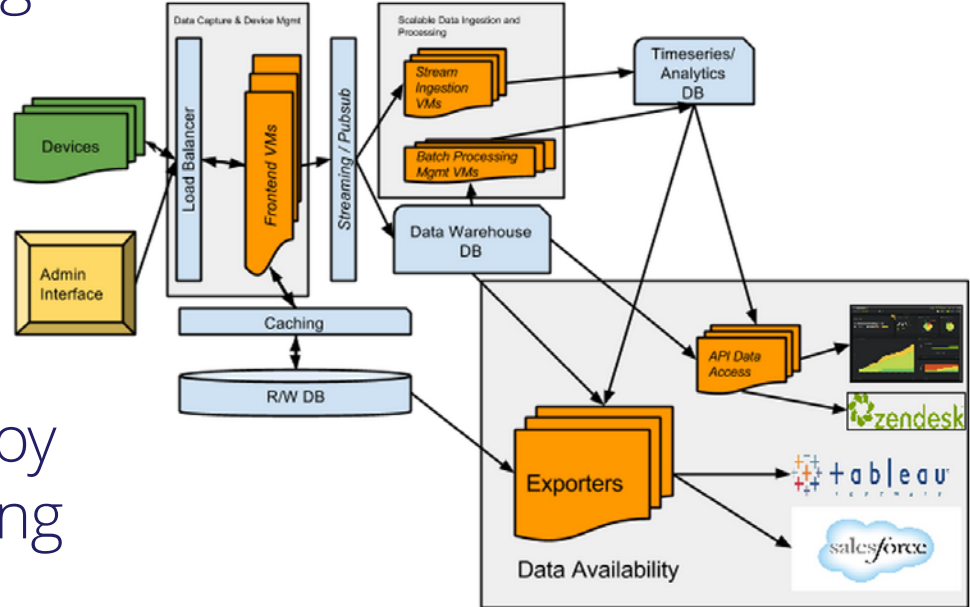
(starts at \$250,000 + \$50,000/mo)

# Runs side-by-side with existing systems. Or use Buddy as the primary data backend.

Buddy can be added to existing devices by firmware update.

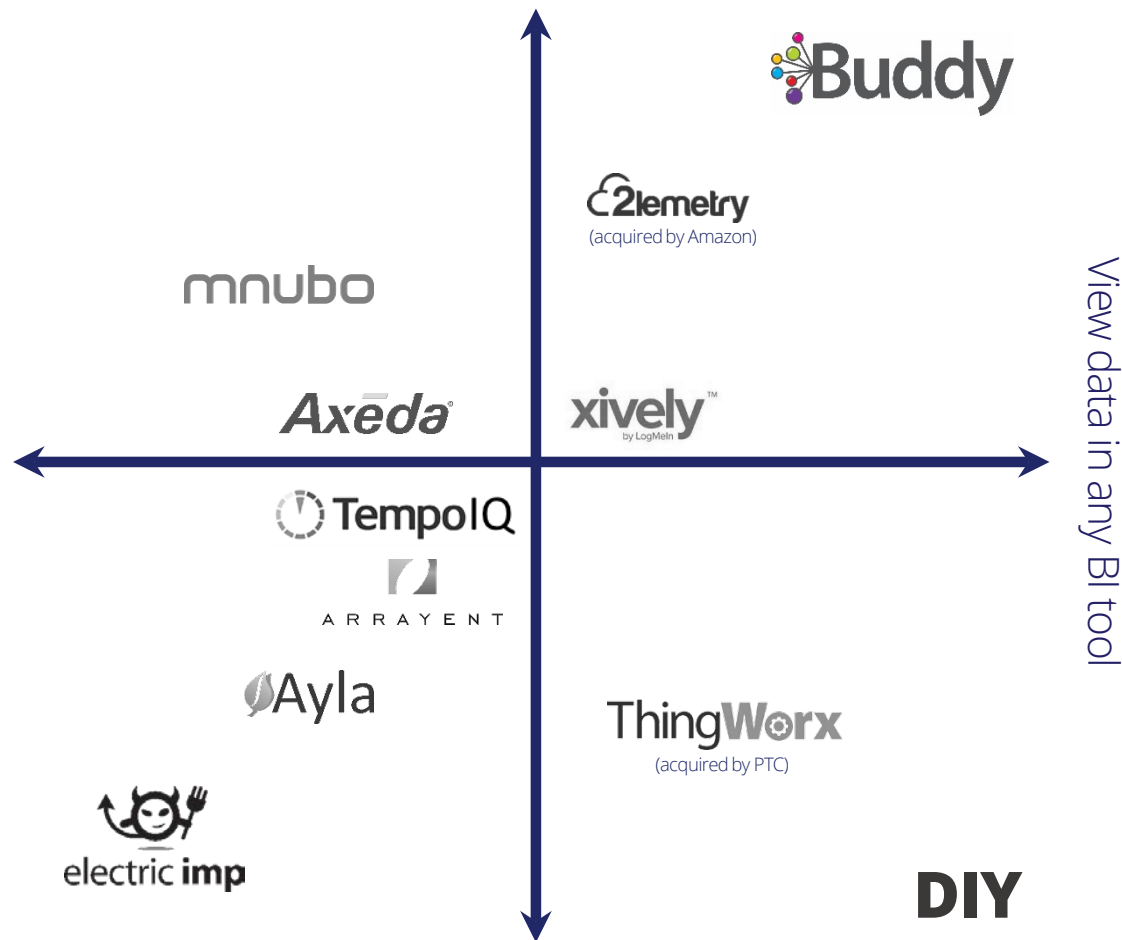
Existing systems (legacy or custom) can remain in place.

Organizations can trial or deploy Buddy without removing existing infrastructure.



# Competitive Landscape

Fast & lightweight implementation (add to any device)



One of the top 5 U.S. mobile carriers uses Buddy to collect telemetry via software pre-installed on smartphones.

Customer interaction with their devices generates data that is protected, managed & processed by Buddy.

Buddy integrates this data directly into the carrier's billing systems, where it is used to calculate monthly bills & discounts.

## **Customer Case Study – Top 5 U.S. mobile carrier**

(for many customers, using Buddy in their data workflow is a strong competitive and/or security advantage, and so accordingly they ask us to keep the nature of their relationship with us confidential)

# Pro Forma Capital Structure

Event	Shares	Performance Shares	Options
Current	121,394,894	-	48,220,948
Consideration to Buddy shareholders and option holders	500,000,000	100,000,000	804,041
Public offer	150,000,000	-	-
Capital Raising Options and Transaction Options	-	-	42,500,000
<b>TOTAL</b>	<b>771,394,894</b>	<b>100,000,000</b>	<b>91,524,989</b>

# Indicative Timetable

Execute option agreement for the acquisition of Buddy	20 July 2015
Completion of first tranche payment	27 July 2015
Due diligence completed and formal documents executed	20 August 2015
Completion of second tranche payment	26 August 2015
Dispatch Notice of Meeting seeking approval for the acquisition of Buddy	21 August 2015
General Shareholder Meeting to approve the acquisition of Buddy	25 September 2015
Lodgement of prospectus with ASIC	28 September 2015
Closing date of offer under the prospectus	23 October 2015
Dispatch holding statements	26 October 2015
Re-quotation of shares on ASX	4 November 2015

# Try us for yourself – right now.

## Buddy IoT Features Demo

### Device Data Delivered

Connected cars, garage door openers, blenders, microwaves, airplanes, smart devices, and medical equipment are just a small sampling of the new wave of devices forming the Internet of Things (IoT). IoT devices produce massive amounts of data about everything from how they're used to when they're about to break; Buddy makes it easy to access the data produced by any Internet connected device. This demo is an example of how Buddy can help you make use of device data in your business.

[Buddy Device Simulator](#) [Data Visualization](#) [Customer Support Integration](#) [Code Sample](#)

#### Welcome to the Buddy Device Simulator!

Our example demonstrates a generic customer service tool for IoT devices that allows your support staff to view and troubleshoot a customer's device.

To get started, enter the URL below into your **mobile device web browser**. This URL launches the Buddy Device Simulator, which sends the information you see on your phone back to our database through our telemetry system.

<http://demo.buddy.com/device>

The simulator sends us your device location, compass reading, and information from the "User Setting" slider and "Report Error" toggle. "Report Error" simulates sending an error code along with the telemetry while "User Setting" mimics an arbitrary setting that the device owner can set.

Once you have the simulator running on your mobile device use the tabs above to check out a live dashboard and see how we implement this project.



**Step 2:** On your smartphone browser, open <http://demo.buddy.com/device>

**Step 3:** On your PC, click on “Data Visualization” and note the dashboard updates every 30 seconds.

**Step 4:** On your PC, click on “Customer Support Integration” and enter the serial number from your phone browser.

Note the real-time flow of data into Buddy, adjust settings on your phone browser to simulate change in device state/telemetry stream.

**Step 1:** Open <http://demo.buddy.com>

# Headquarters located in Seattle, WA.

(opening an Australian engineering office in 2015)





The simplest way to make data from any connected device valuable.

[www.buddy.com](http://www.buddy.com)

[info@buddy.com](mailto:info@buddy.com)