



LEGEND MINING LIMITED

Company Presentation – July 2015

ABOUT LEGEND

- ❖ ASX listed exploration company
- ❖ Market capitalisation ~\$18M (2B shares @ 0.9c)
- ❖ Cash and liquids ~\$12M (+\$6M August 2015)
- ❖ New Fraser Range Project – Rockford



Chairman
Michael Atkins



Managing Director
Mark Wilson



Exec. Director - Technical
Derek Waterfield



Company Secretary
Dennis Wilkins

PROJECT LOCATION

Located in northern
Fraser Range District

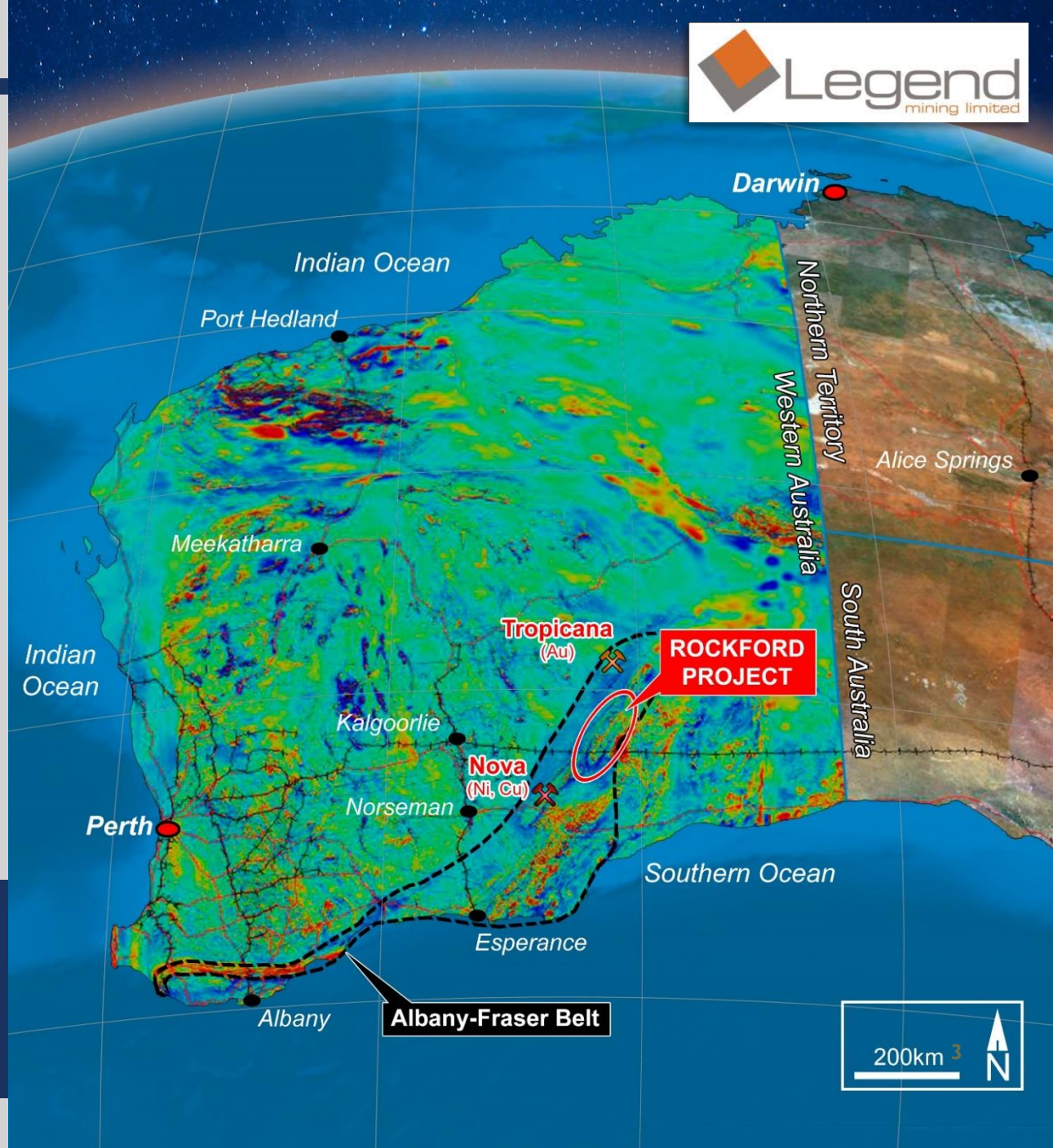
120km NE of Nova
100km S of Tropicana

Comprises eight
granted exploration
licences and two
applications covering
2,939km²

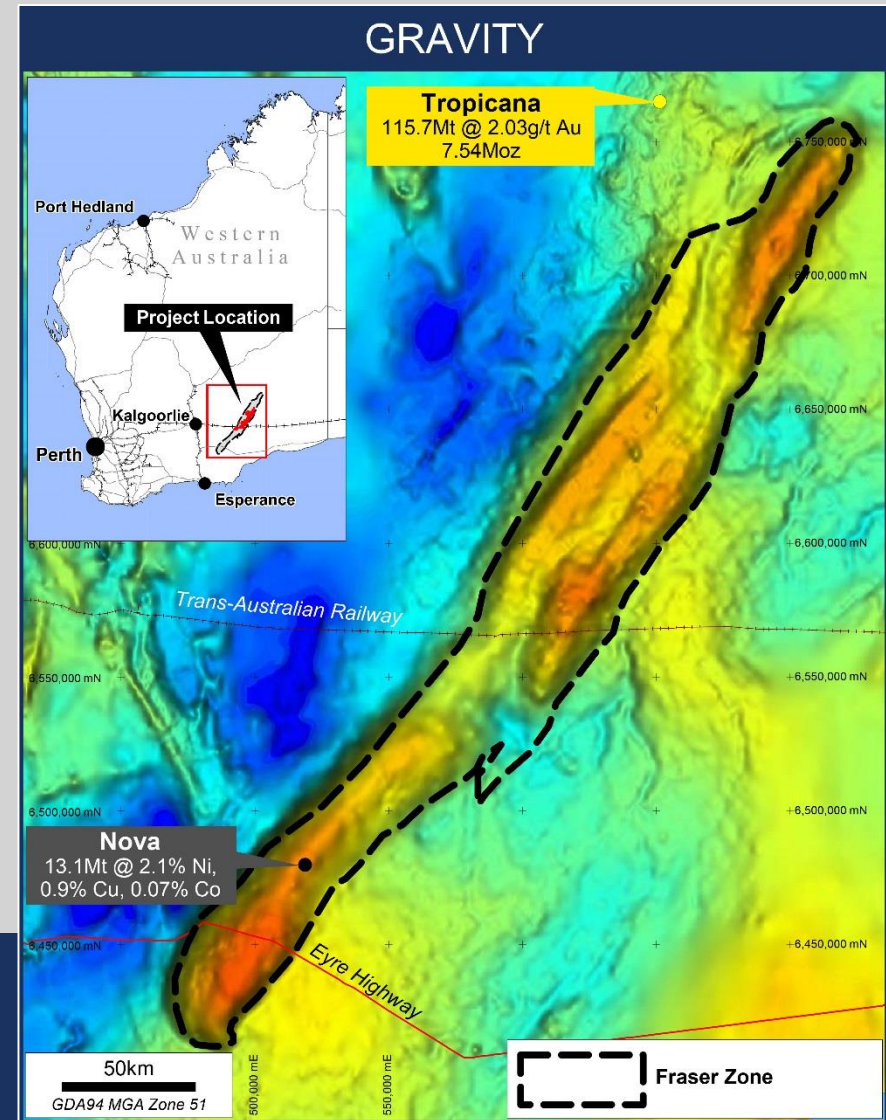
Infrastructure access

Project potential for

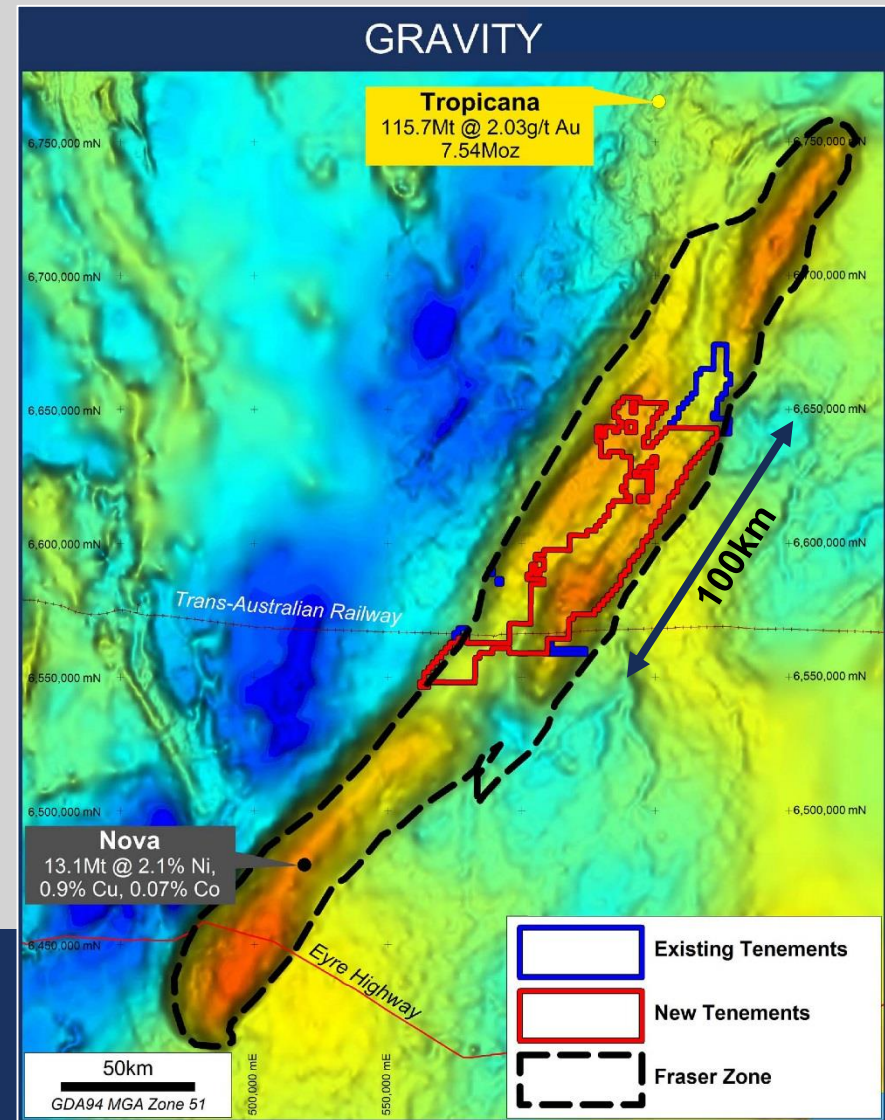
- Nova style Nickel-Copper
- Tropicana style Gold



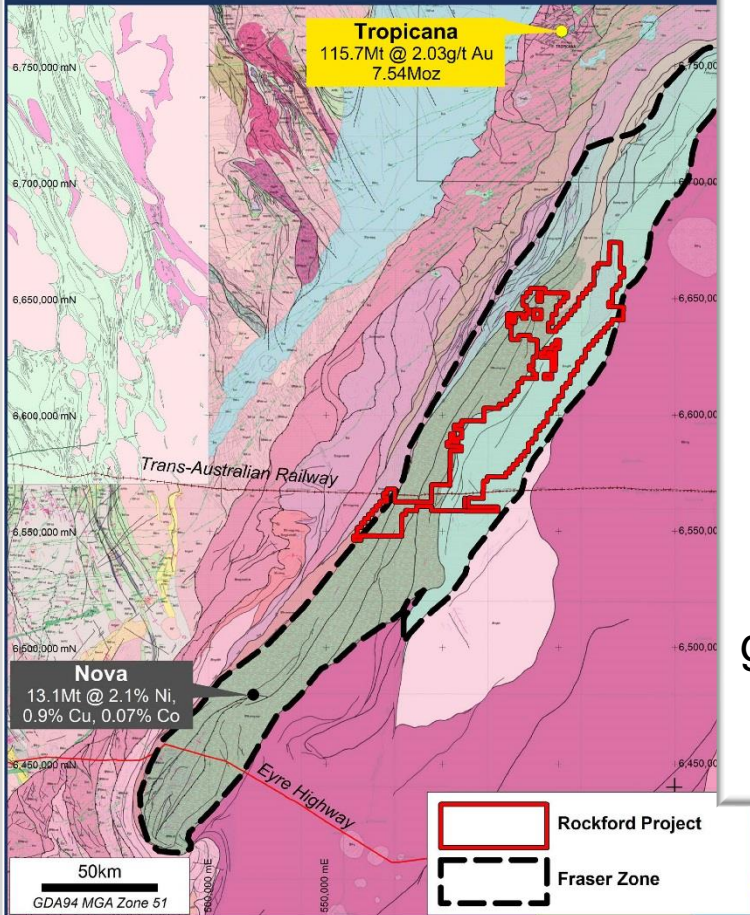
- Nova discovery identified Fraser Range as exploration “hot spot”
- Legend identified where it wanted to be in Fraser Range from regional datasets – “Fraser Zone”
- CA with Creasy Group provided access to further high quality data
 - *Aeromagnetic Survey*
 - *Gravity Survey*
 - *Aircore drilling*
- **Creasy Group data confirmed high prospectivity of Project**



- Biggest Block - 2,939km² contiguous tenure
 - Best Street - Fraser Zone (gravity, geology and aeromagnetics)
 - Project covers 100km strike of gravity high “ridge”, similar to Nova
 - High quality aeromagnetic and gravity data acquired with project allows direct targeting of mafic/ultramafic intrusives
 - Aircore drilling has identified prospective nickel host rocks
-
- **Rockford has all the “right” ingredients**



GEOLOGY

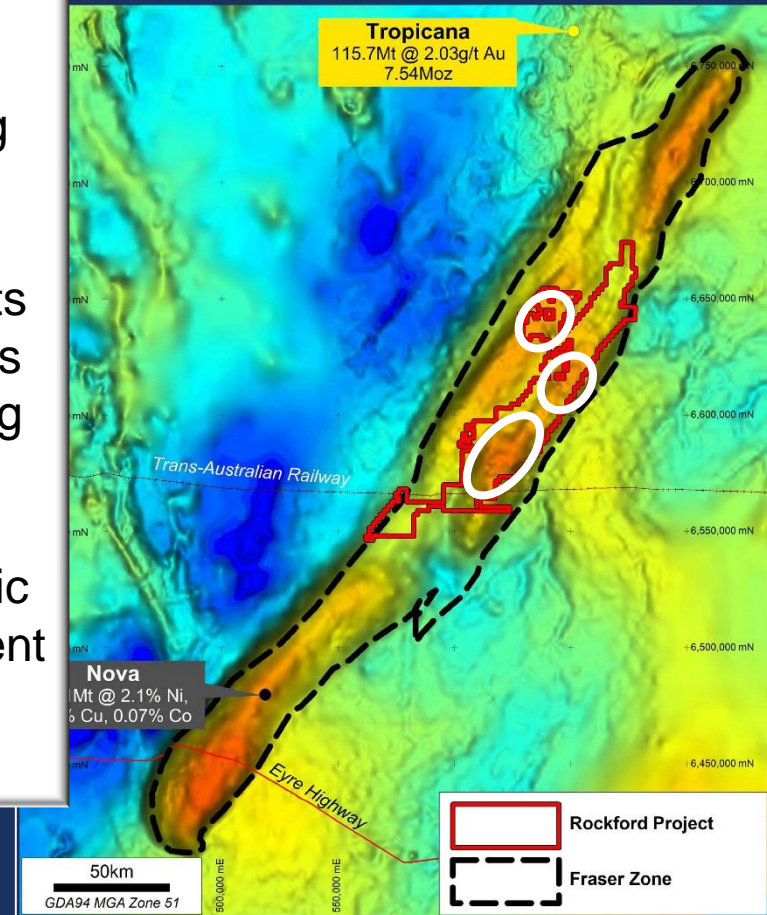


High quality
gravity data to
assist targeting

Gravity hot spots
show similarities
to “Nova” setting

Mafic / ultramafic
geology consistent
with gravity

GRAVITY



- Legend acquired 70% interest in new package from Creasy Group via:

- ✓ \$2.5M cash
- ✓ 71.5M shares @ \$0.007
- ✓ 150M options, \$0.04 (5 year term)
- ✓ Legend to sole fund exploration with Creasy Group 30% free carried to signing of Mining Venture Agreement



- Subject to Shareholder approval
- Likely meeting date early September

- Nova discovery “template”
 - Learn from fellow explorers
 - First 6 Months
 - *Data interpretation and integration*
 - *Target selection*
 - *Ground EM – define conductors*
 - *Drill test conductors*
- One drillhole from the next Nova

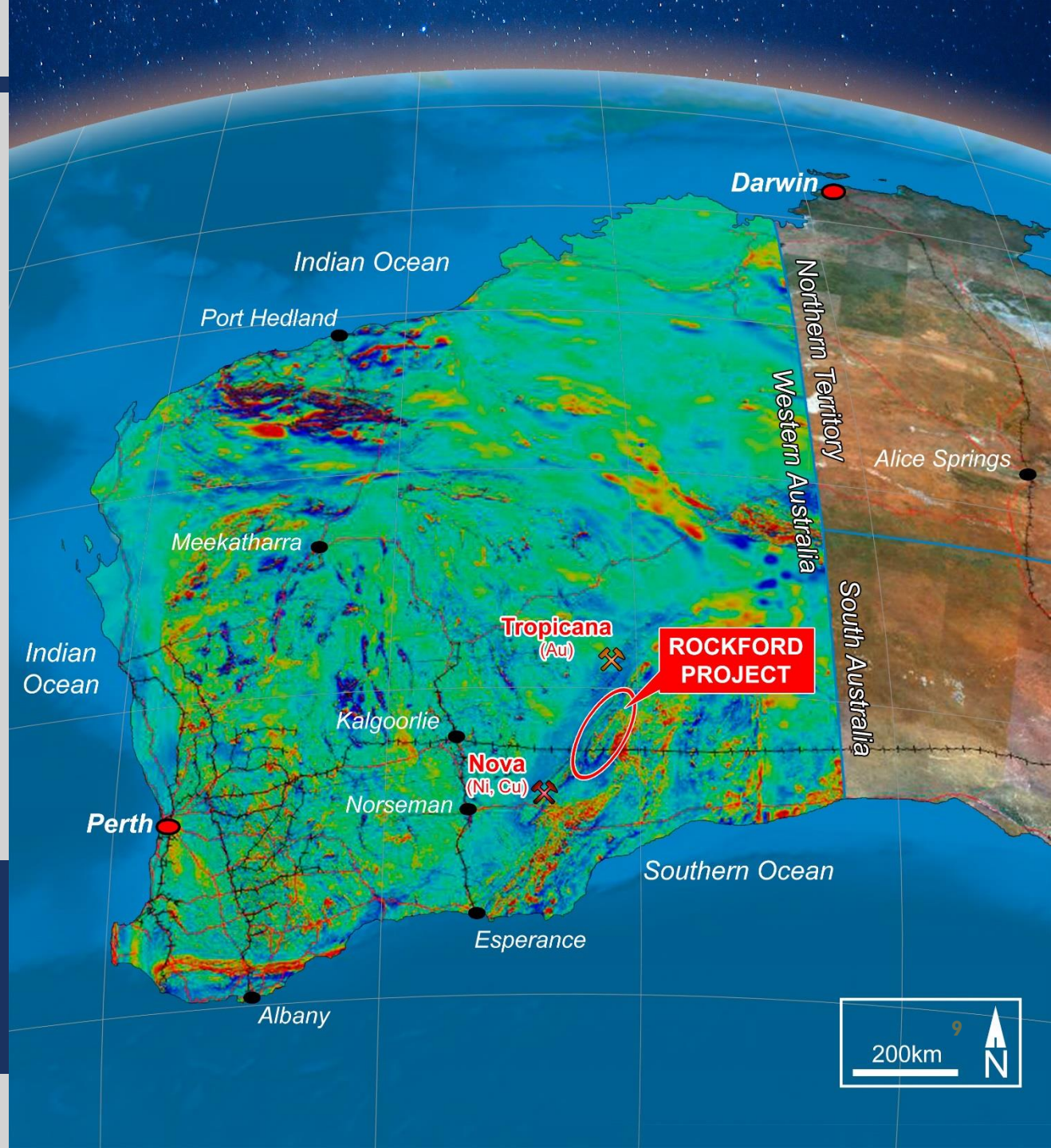


Highly Prospective Rockford Project

Well Funded

Experienced
Team

Grow
Shareholder
Value



DISCLOSURE



This is not a disclosure document. Any material used in this presentation is a summary of selected data, and any investor in Legend Mining Limited should refer to all Legend Mining Limited ASX releases and statutory reports before considering to invest in the company.

Any forward looking information in this presentation has been prepared on the basis of a number of assumptions that may prove not to be correct. Neither Legend Mining Limited, nor its officers, employees and advisors make or give any representation, warranty or guarantee in relation to this presentation.

Legend Mining Limited reserves the right to update, amend or supplement the Information in this presentation at any time in its absolute discretion without incurring any obligation to do so.

The information in this presentation that relates to exploration results is based on information compiled by Mr Derek Waterfield who is a member of the Australian Institute of Geoscientists and is a full time employee of Legend Mining Limited.

Mr Derek Waterfield has sufficient experience which is relevant to the style of mineralisation and type of deposit under consideration and to the activity which he is undertaking to qualify as a Competent Person as defined in the 2012 Edition of the 'Australasian Code for Reporting of Exploration Results, Mineral Resources and Ore Reserves' (the JORC Code).

Mr Derek Waterfield consents to the inclusion in this presentation of the matters that relate to exploration results in the form and context in which it appears.



LEGEND MINING LIMITED

July 2015