



Image: Big Red Drilling, Fraser Range



Fraser Range Presentation

Targeting Nickel Massive Sulphide Deposits in the Fraser Range
Investor Road show May 2015

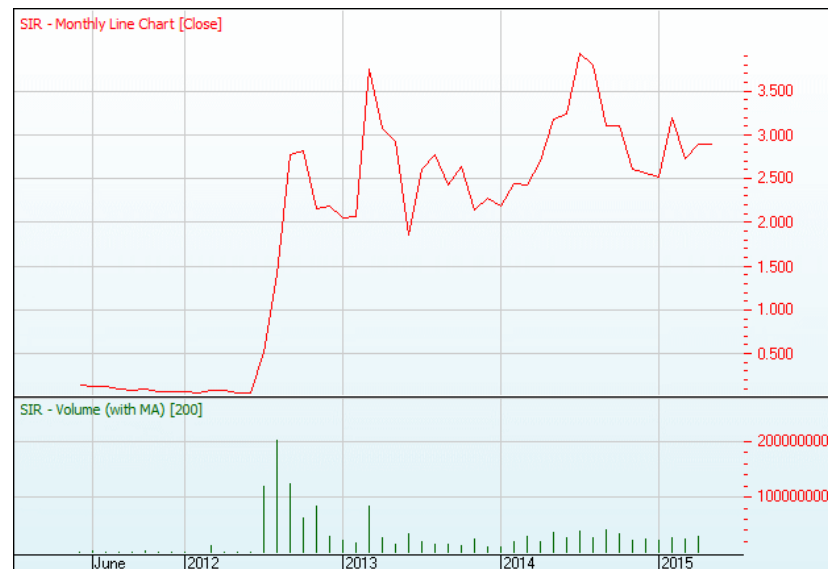
Why Focus on Fraser Range?



- Sirius Resources (ASX:SIR) world class Nickel Nova Bollinger Discovery
- Mineral Resource of 14.6Mt @ 2.2% Ni and 0.9% Cu
- Share price pre discovery \$0.06 to a peak of over \$5.00 which is an increase of over 5000%
- Sirius Market Cap of \$8m pre Nova Bollinger Discovery, Now Circa 1bn
- Short turn around from initial discovery to mine as WA good mining jurisdiction with mining expertise.



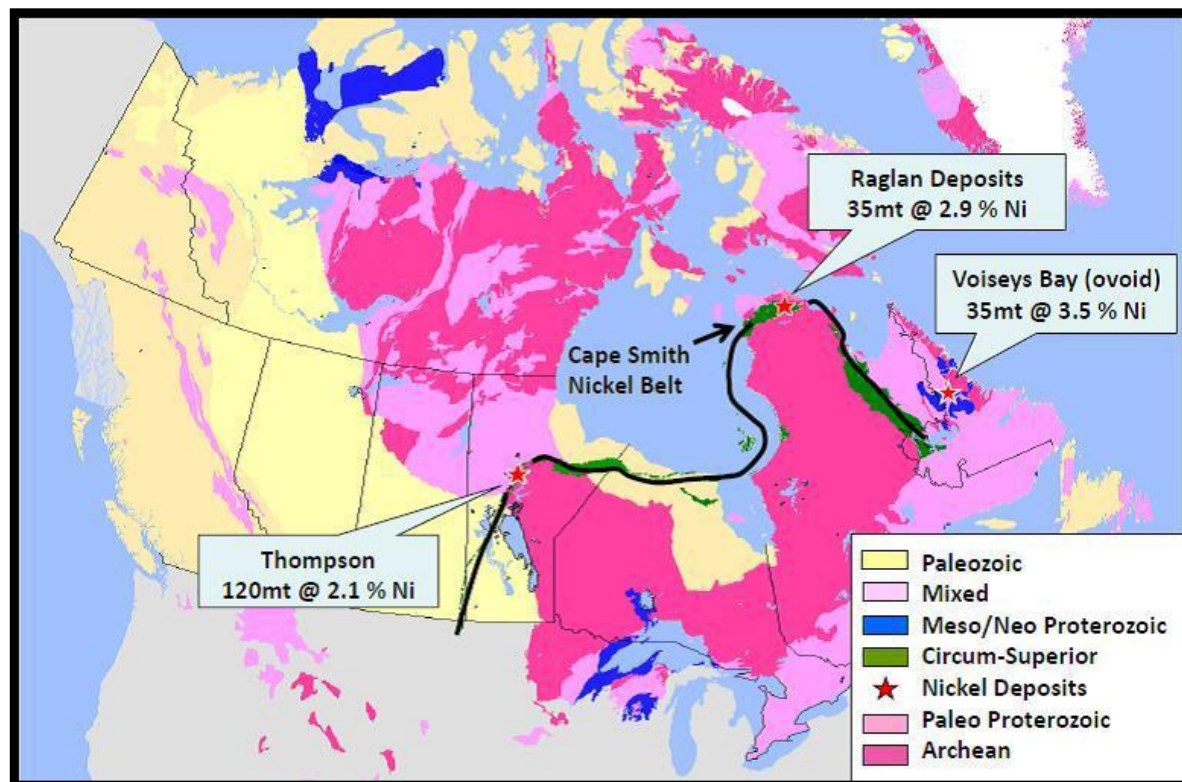
Image: Photo of the boxcut at Nova Bollinger Deposit



Just the Beginning?



- Underexplored Nova-Bollinger only major nickel discovery in the Fraser Range
- High grade, long life and low cost deposits such as Nova, Raglan, Voiseys Bay, Sudbury and Norilsk are robust
- Canada's big nickel deposits took time to discover (e.g. Thompson Nickel Belt)



Nova may be the beginning of multiple big discoveries...

Corporate Overview



Capital Structure

Shares on Issue	#	187m
Options on Issue ^{2 & 3}	#	82m
Cash	A\$	\$2.2m
Market Cap	A\$	\$17m

1. 44mil 8c options expire 30 June 2015
2. 15mil 35c & 45c options expire 31 October 2015



One year Rumble chart

Board & Management

Shane Sikora	CEO
Terry Topping	Executive Director
Andrew McBain	Non-Executive Director
Matthew Banks	Non-Executive Director
Michael Smith	Non-Executive Director

Corporate Advisors

Nathan Tinkler

EAS Advisors

Ownership Analysis

Board and Management	7%
Top 20	26%

■ Nathan Tinkler

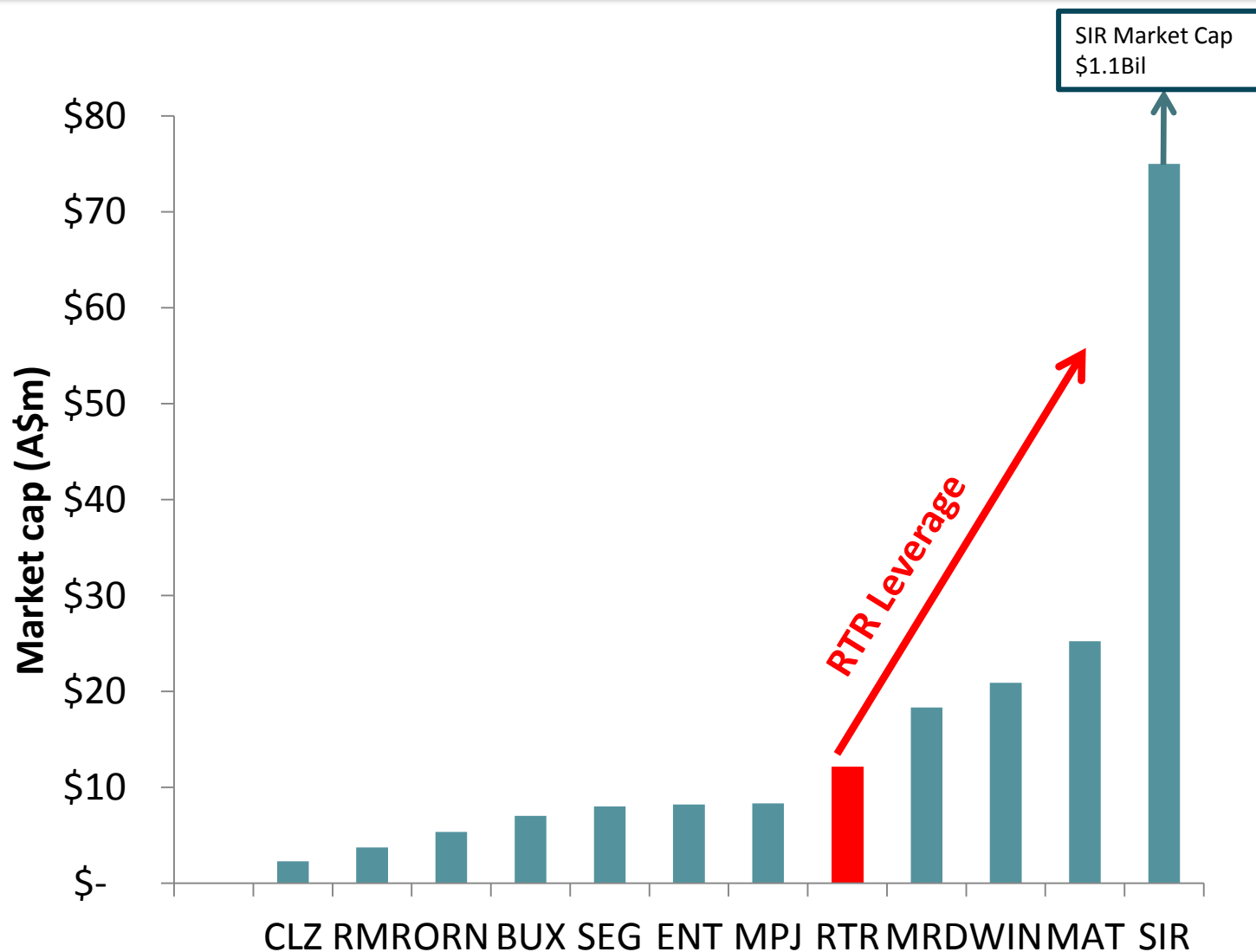
Mr Tinkler is a highly regarded resource investor known for his entrepreneurial success in investing in coal assets in Queensland and NSW. He formed his own mine machinery maintenance business before identifying the Middlemount coal mine in central Queensland and being a significant contributor to the development of Whitehaven Coal through the merger with Aston Resources.

■ EAS Advisors

Headquartered in New York, EAS Advisors is a boutique global resources advisory firm that was founded by Edward Sugar in 2008. The foundation of EAS's business is built on knowledge, capital market insight and access to institutional capital. having participated in over US\$3 billion of transactions to date.

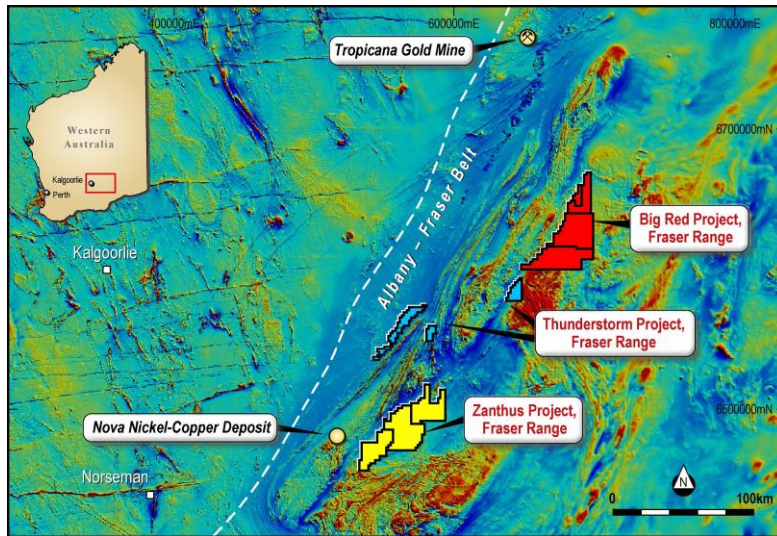
EAS has an impressive track record of success in assisting natural resource companies at key stages and executing major global transactions. Mr Sugar and EAS have played a key role in many natural resources financing deals, well-known for backing early funding deals for mining entrepreneurs

Rumble Leverage



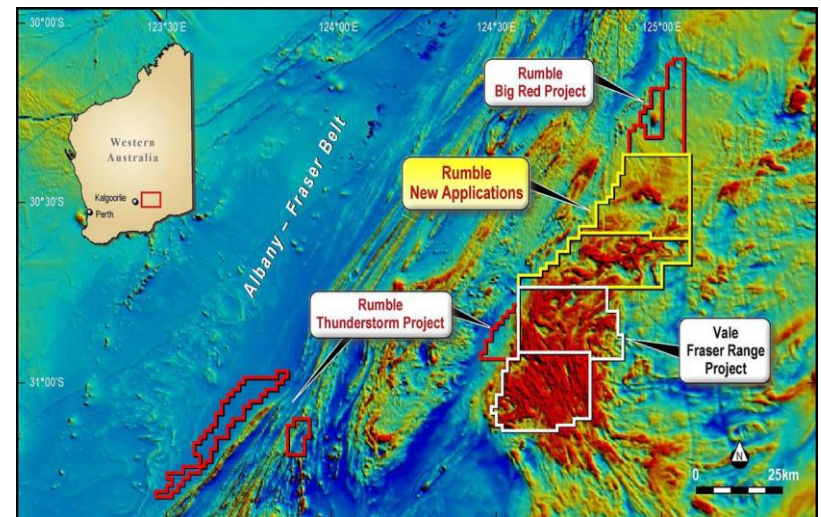
1. Market cap as of 30/04/15

Fraser Range focussed explorer



- 3,260 sqkm - one of the largest in the Fraser Range
- 3 Highly Prospective Project Areas
- 100% ownership in 10 out of 11 Fraser Range tenements
- Rumble will continue to expand its footprint in Fraser Range

- 55Billion Dollar Nickel Miner Vale enters Fraser Range east of Thunderstorm Project
- Vale owns the Voiseys Bay Nickel Deposit
- First Major in the belt highlights prospectivity of the region



Our systematic development strategy



Targeting Massive Nickel Sulphides in the Fraser Range under cover.

- Airborne magnetics to identify structures and features
- Gravity surveys to highlight dense intrusive bodies over the key targets
- Targeted ground EM to identify bedrock conductors which may represent massive Nickel Sulphides
- Drill Bedrock Conductors



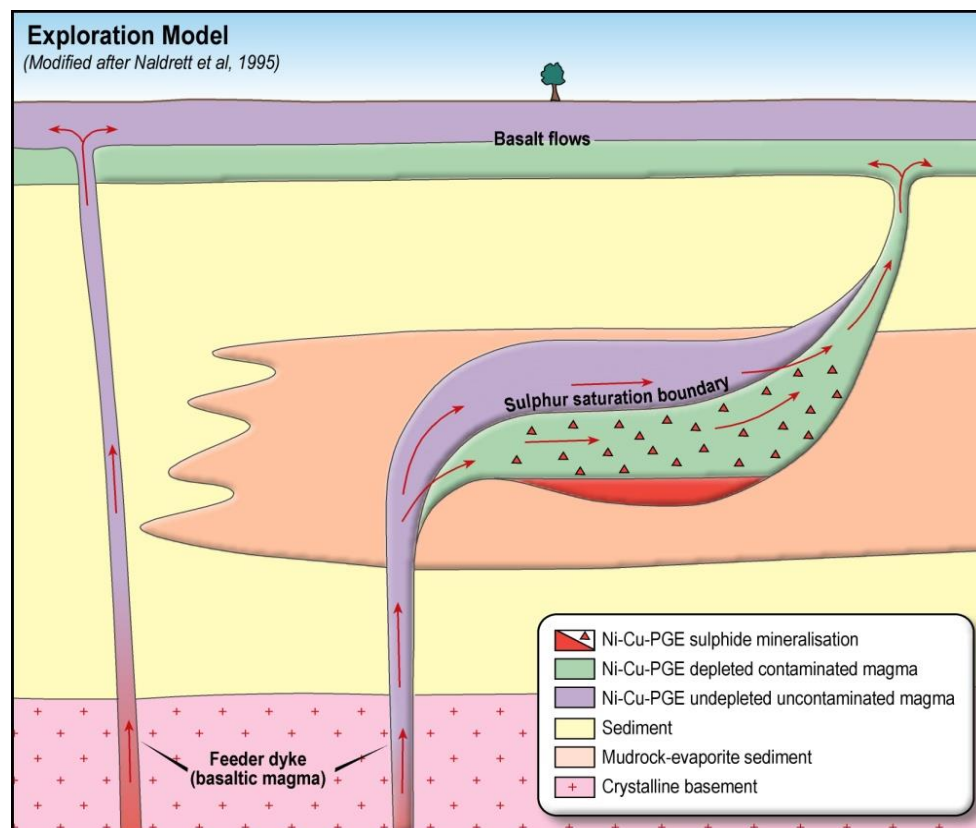
Pictures taken from Rumble Field Work in July

Exploration Model



Exploring the Fraser Range in Western Australia for magmatic Nickel and Copper sulphides.

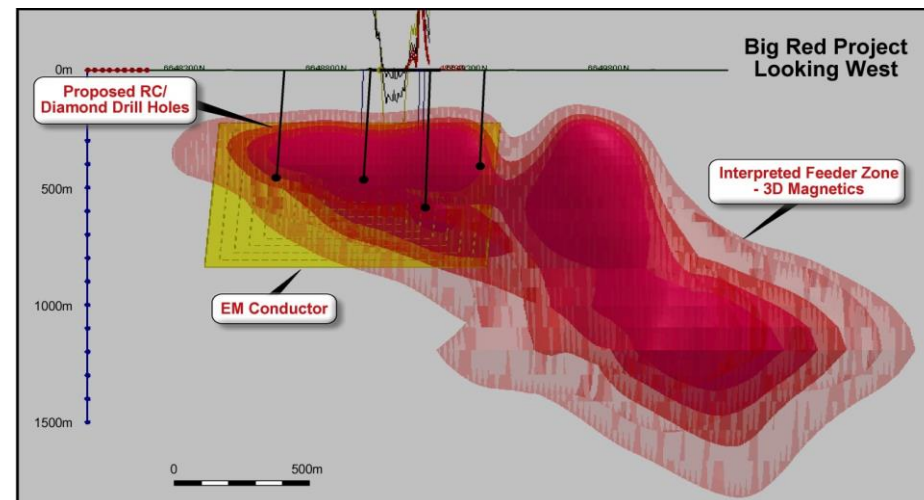
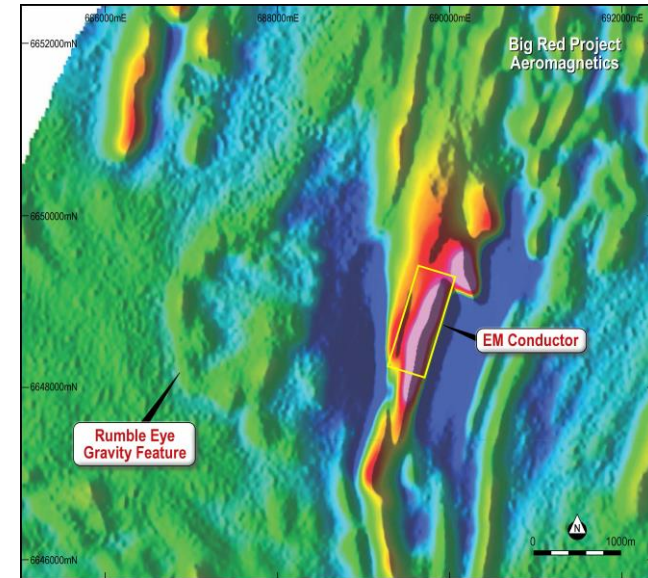
- These deposits have distinctive features, including massive sulphide zones that can be detected utilizing various EM methods to outline conductive bodies.
- Main targets are potential feeder structures outlined in this schematic cross section that is based on the Russian Norilsk nickel sulphide deposits (the world's largest nickel sulphide deposit).



Big Red Project – Maiden Drill Program



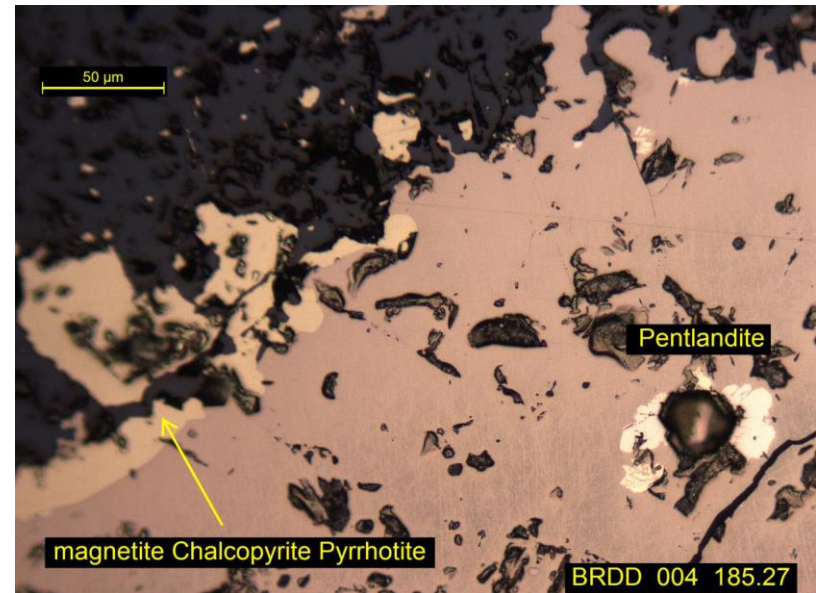
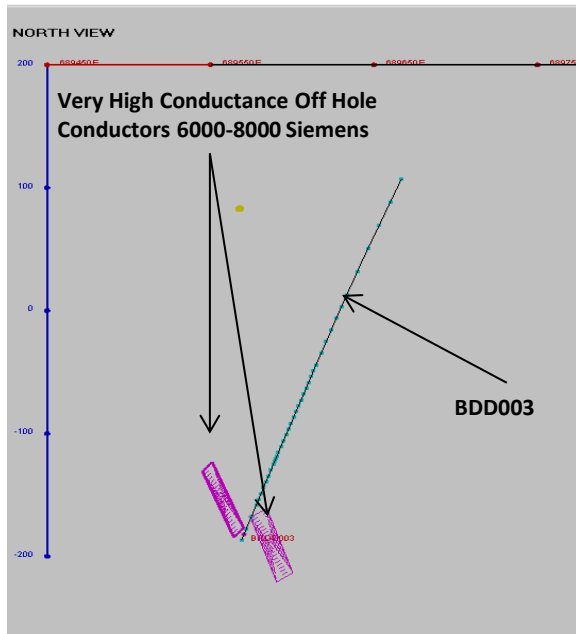
- Ground EM identified the largest bedrock conductor in the Fraser Range 2km long
- Airborne Mag identified a discrete magnetic high coincident with bedrock conductor
- Rumble completed 4 Mud Rotary/Diamond drill holes totalling 1503.9m
- Each hole intersected multiple horizons of Fraser Range Gabbro containing disseminated magmatic sulphides



Big Red Project – Maiden Drill Program



- Nickel (pentlandite) and Copper (chalcopyrite) sulphides with pyrrhotite confirmed in Fraser Range Gabbro
- Intersecting Ni-Cu sulphides in Fraser Range gabbro is significant as it can host magmatic Ni-Cu massive sulphide deposits

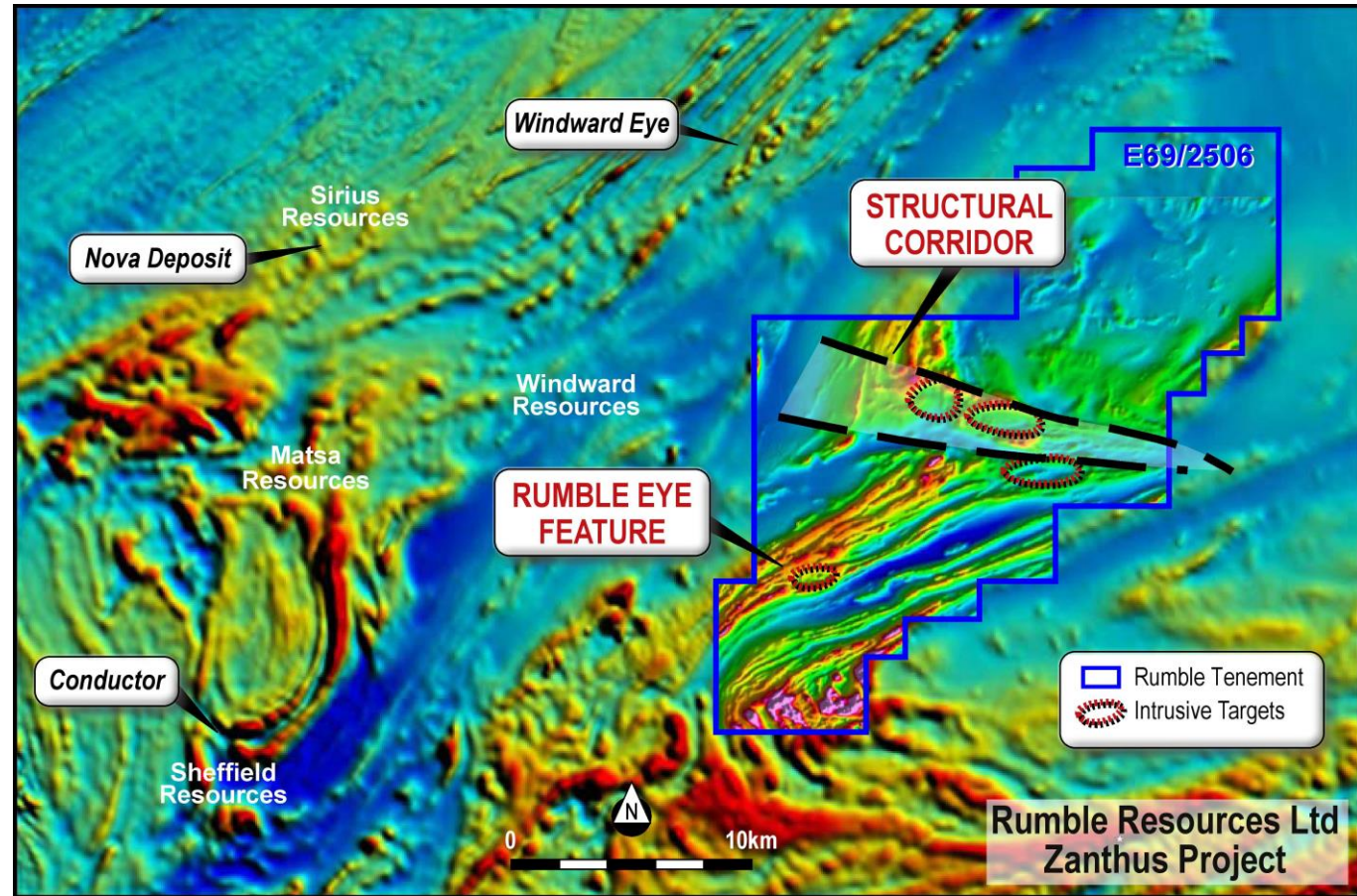


- Multiple Off Hole conductors identified, up to 8000 siemens are first order massive sulphide targets
- Small area of the 2 km conductor tested

Zanthus Project



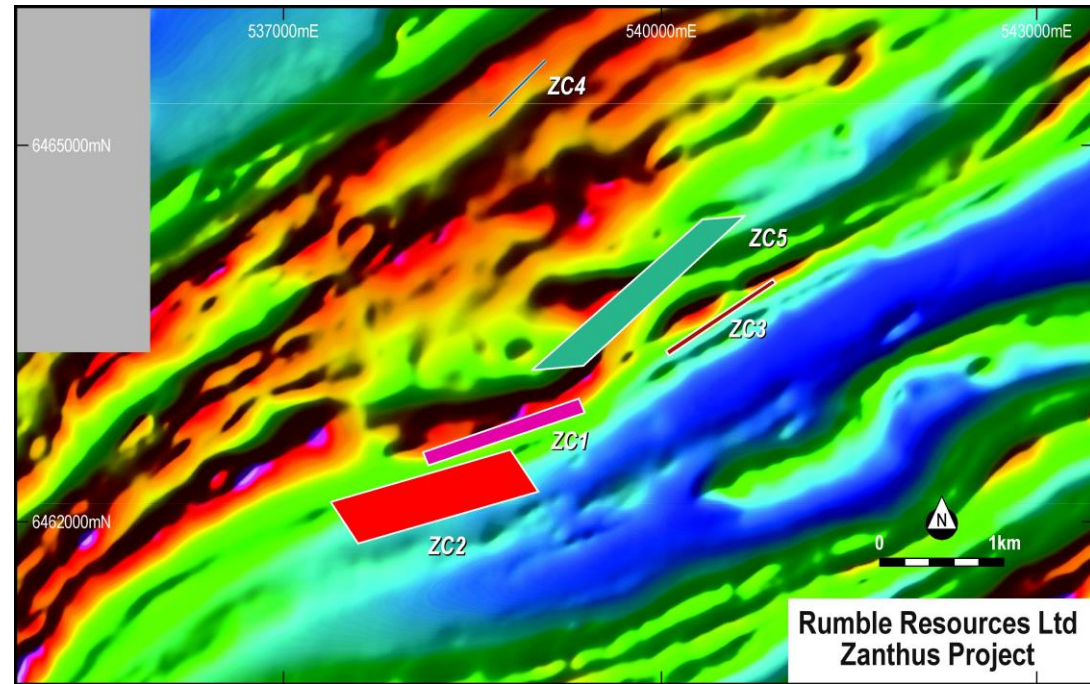
- JV with Blackham Resources Ltd to earn up to 75%
- 18km's from Nova Deposit
- Airborne Mag Survey Completed
- Tenement wide gravity survey planned
- EM survey (MLTEM) planned over significant structural corridor
- EM survey (MLTEM) completed over Rumble Eye Feature



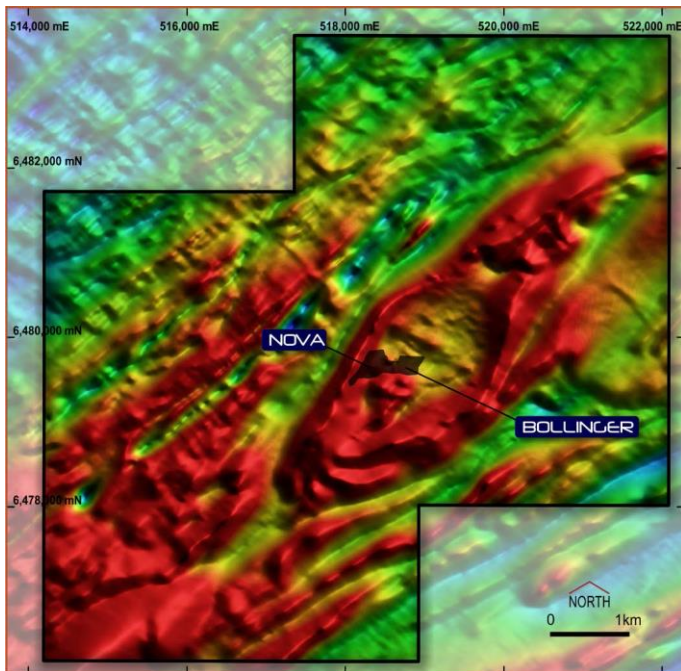
Zanthus eye conductors



- EM survey (MLTEM) identified 5 bedrock conductors across Zanthus eye feature
- Zc1-3 bedrock conductors of significant conductance
- Zc5 recently modelled which extends within the Zanthus Eye Feature



- Bedrock Conductors Shallow Depth
- 5 RC holes for 1200 metres targeting the 5 bedrock conductors scheduled to commence in Late May
- Nova discovered when drilling bedrock conductor within eye feature



Investment Summary



- ✓ World-class exploration play, majors entering
- ✓ Dominant strategic land position, 100% ownership in 10 out of 11 tenements
- ✓ Drill program testing 5 bedrock Conductors at Zanthus Eye Feature in Late May
- ✓ 2 Very High Conductance Off Hole Conductors at Big Red close to Nickel Sulphides to be drill tested
- ✓ Active exploration program & news flow in 2015
- ✓ High profile corporate advisors to raise global awareness
- ✓ Strong board & management team
- ✓ Upside leverage to exploration success

Shane Sikora, CEO– +61 406886590
s.sikora@rumblersources.com.au

Terry Topping, Executive Director (Technical) – +61 417923341
t.topping@rumblersources.com.au