

ASX ANNOUNCEMENT



Big Red Project, Fraser Range Update

Rumble Resources Ltd ("Rumble" or "the Company") is pleased to provide an update on the Company's exploration of the 100% owned Big Red Project located 450 kilometres east of Kalgoorlie, in the Fraser Range, Western Australia.

Rumble's maiden drilling programme was recently completed at its Big Red Project, with results announced on 4 December 2014. The drill collar locations are provided in Table 1.

This initial drill program completed 4 Mud Rotary/Diamond drill holes totalling 1,505.3m with the programme designed to test a 2km EM conductor outlined by a high powered ground EM survey.

As previously reported three holes reached target depth and intersected sulphide zones within gabbros of the Fraser Range Complex. These sulphide zones are of considerable widths and indicate this large conductor to be a significant mineralised system. Intersecting mafic gabbro is of significance as it is the rock unit which can host magmatic Ni-Cu sulphide deposits. All holes are now in Perth and are being cut, sampled and analysed to provide valuable geochemistry.

The Company now expects to continue exploration for additional sulphide zones with a down hole (DHEM) program expected to commence later in the week.

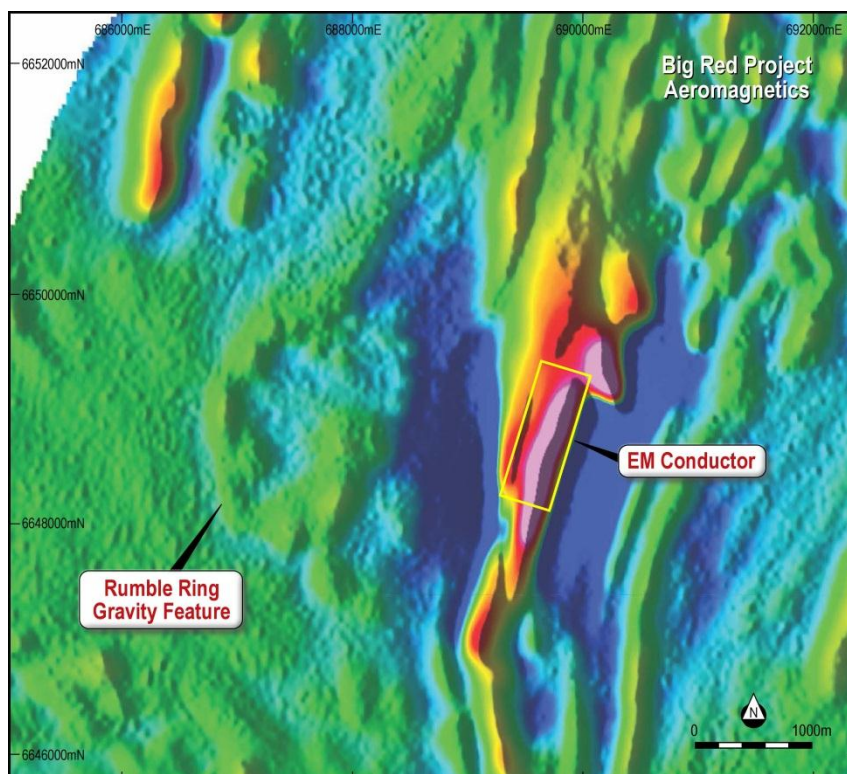


Figure 1 Detailed Magnetics with Ground EM Conductor.

Rumble Resources Ltd

Suite 9, 36 Ord Street,
West Perth, WA 6005

T +61 8 6555 3980

F +61 8 6555 3981

rumblresources.com.au

ASX RTR

Executives & Management

Mr Shane Sikora
CEO

Mr Terry Topping
Executive Director

Mr Andrew McBain
Non-executive Director

Mr Matthew Banks
Non-executive Director

Mr Michael Smith
Non-executive Director

Mr Bruno Seneque
Company Secretary

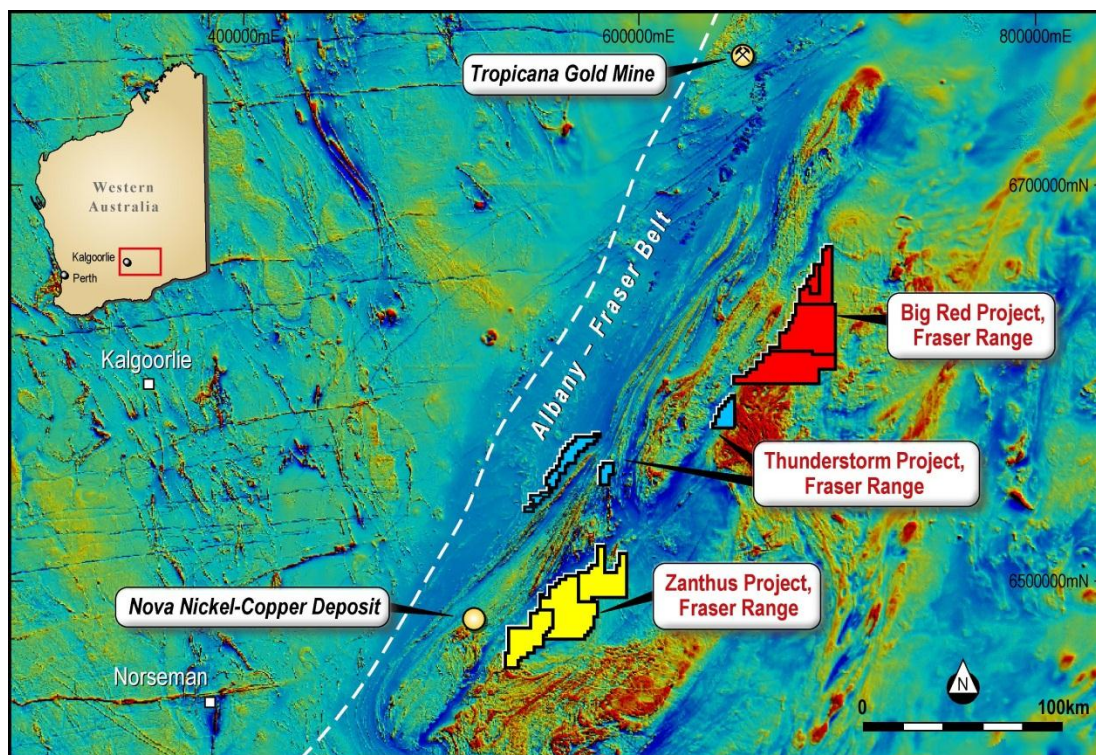


Figure 2 Location of Big Red Project.

Hole	East MGA_51	North MGA_51	Dip	Azimuth	Total Depth metres
BRDD001	689703	6648599	-60	270	241.3
BRDD002	689710	6648600	-60	270	432.1
BRDD003	689704	6648802	-70	270	422.8
BRDD004	689602	6648295	-70	270	409.1

Table 1 Drill collars – Big Red Project drilling

Shane Sikora
CEO
10 December 2014

- ENDS -

For further information visit rumblresources.com.au or contact enquiries@rumblresources.com.au.

About Rumble Resources Ltd

Rumble Resources Ltd is an Australian based exploration company, officially admitted to the ASX on the 1st July 2011. Rumble was established with the aim of adding significant value to its current gold and base metal assets and will continue to look at mineral acquisition opportunities both in Australia and abroad.

Competent Persons Statement

The information in this report that relates to Exploration Results is based on information compiled by Mr Terry Topping, who is a Member of the Australasian Institute of Mining & Metallurgy and the Australian Institute of Geoscientists. Mr Topping is a fulltime employee of Rumble Resources Limited and has sufficient experience relevant to the style of mineralisation and type of deposit under consideration and to the activity which he is undertaking to qualify as a Competent Person as defined in the 2012 Edition of the "Australasian Code for Reporting of Exploration Results, Mineral Resources and Ore Reserves". Mr Topping consents to the inclusion in the report of the matters based on his information in the form and context in which it appears.