

Investor Presentation

Noosa Mining & Exploration Conference

16-17 July 2015

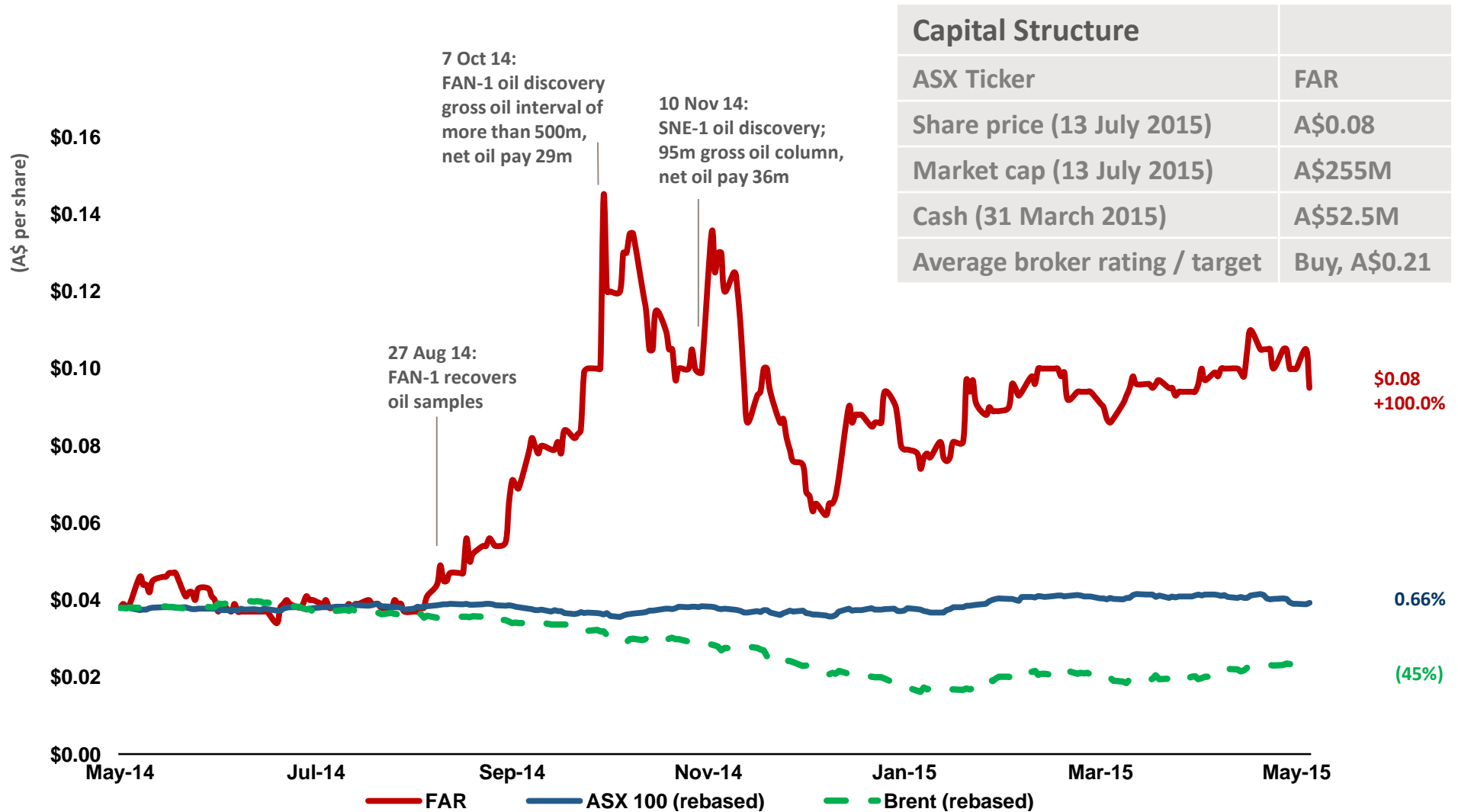


FAR snapshot

- **Mid cap E&P:** FAR entered the ASX 300 Index in March 2015
- **Strong balance sheet.** Cash balance A\$52.5m (March qtr). No debt
- **Africa focused:** Senegal, Guinea Bissau, Kenya and Australia
- **FAN-1 and SNE-1:** New basin opening oil discoveries in Senegal
- **World's largest oil discovery:** SNE rated No. 1 in 2014 (IHS CERA)
- **Good economics:** SNE is low break even (IRR 10% @ US\$45/bbl)
- **Quality Senegal partners:** ConocoPhillips, Cairn Energy, Petrosen
- **New drilling 4Q 2015:** Strong value addition expected from three wells targeting low risk SNE appraisal and near field exploration



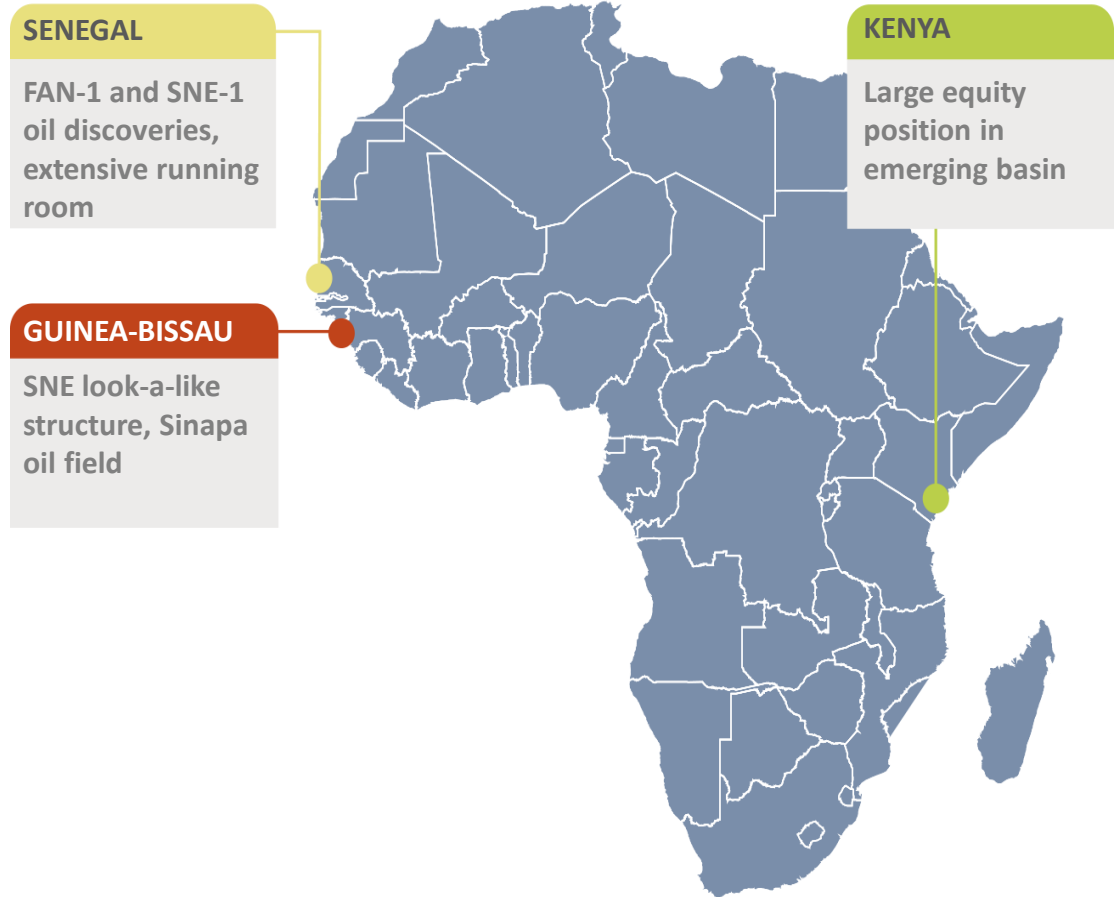
FAR performance



Source: Company filings, IRESS.

FAR in Africa

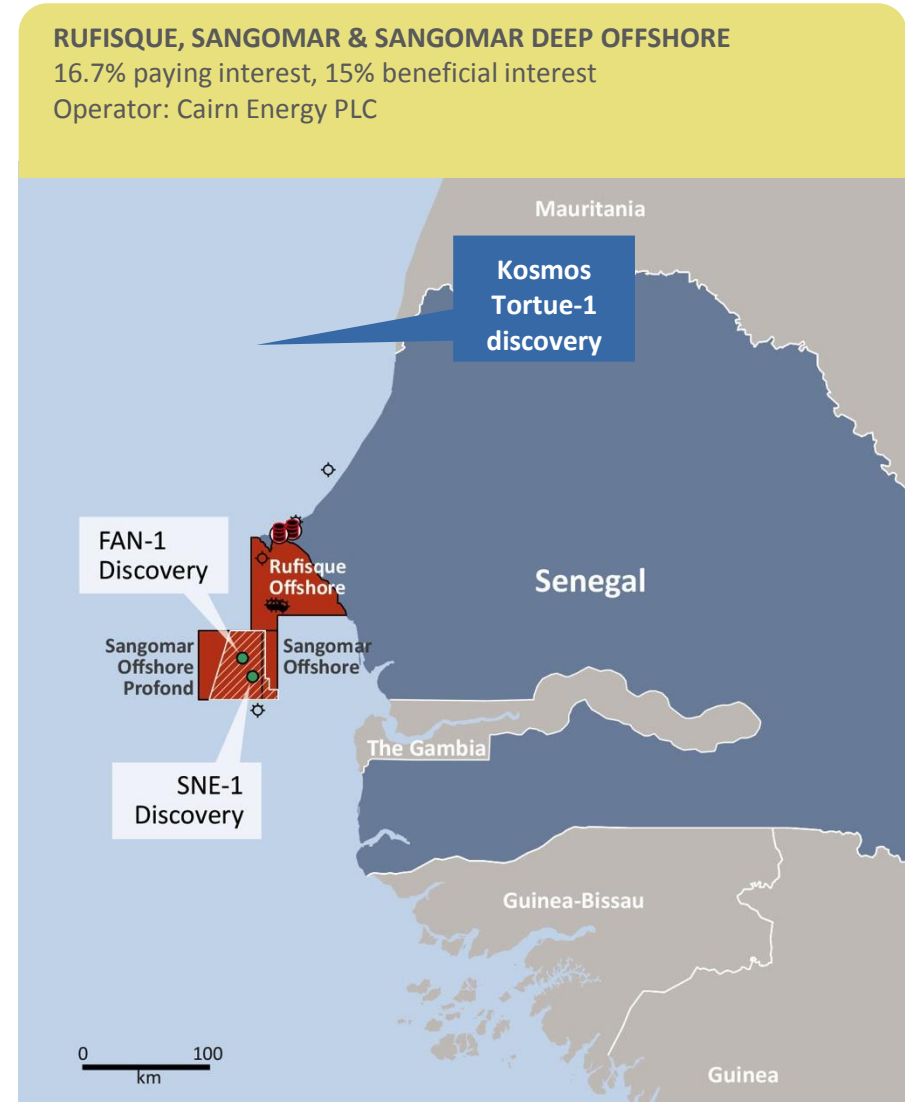
- **A wide portfolio** with significant African experience
- **Focus on Senegal** and NW Africa following discoveries
- **FAR has strong relationships** as one of longest standing oil companies in Senegal
- **Senegal is peaceful** and has been a democracy for 198 years
- **Senegal achieved 4.7% GDP growth** in 2014
- **Senegal S&P sovereign credit rating 'B+/B'** (stable outlook)



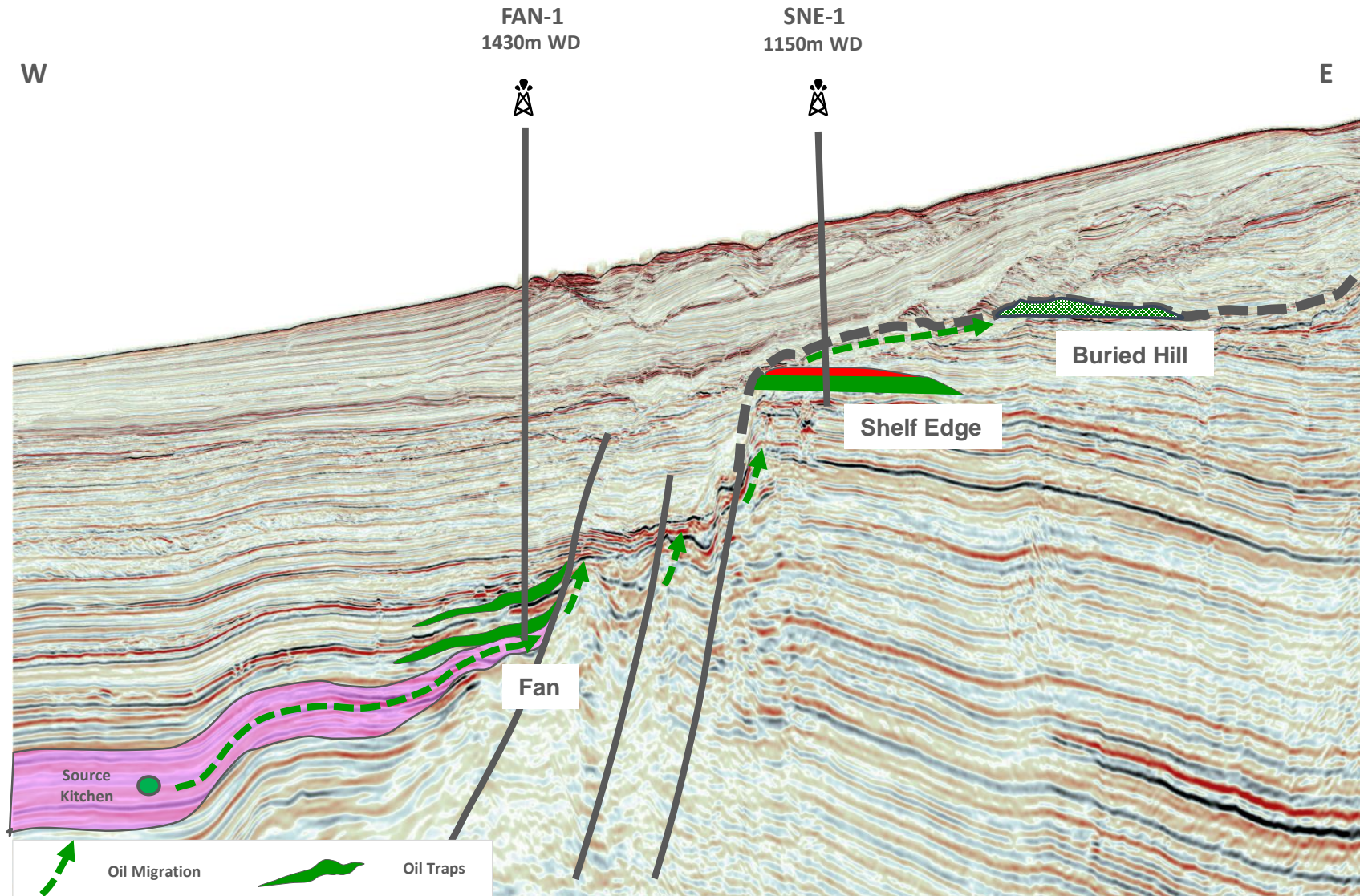
Senegal



- **PSC area 7,490 km²** : Sangomar, Sangomar Deep and Rufisque blocks
- **US\$196M farm-out**: Two successful wells plus US\$10M in cash to FAR
- **FAN-1 and SNE-1**: New world class oil discoveries highlight emerging basin
- **Quality partners**: FAR 15%, Cairn Energy (Operator 40%), ConocoPhillips (35%) and Petrosen (10%)
- **Tortue-1**: New gas discovery straddles Mauritania-Senegal border with a estimated gross resource of 5-12 Tcf



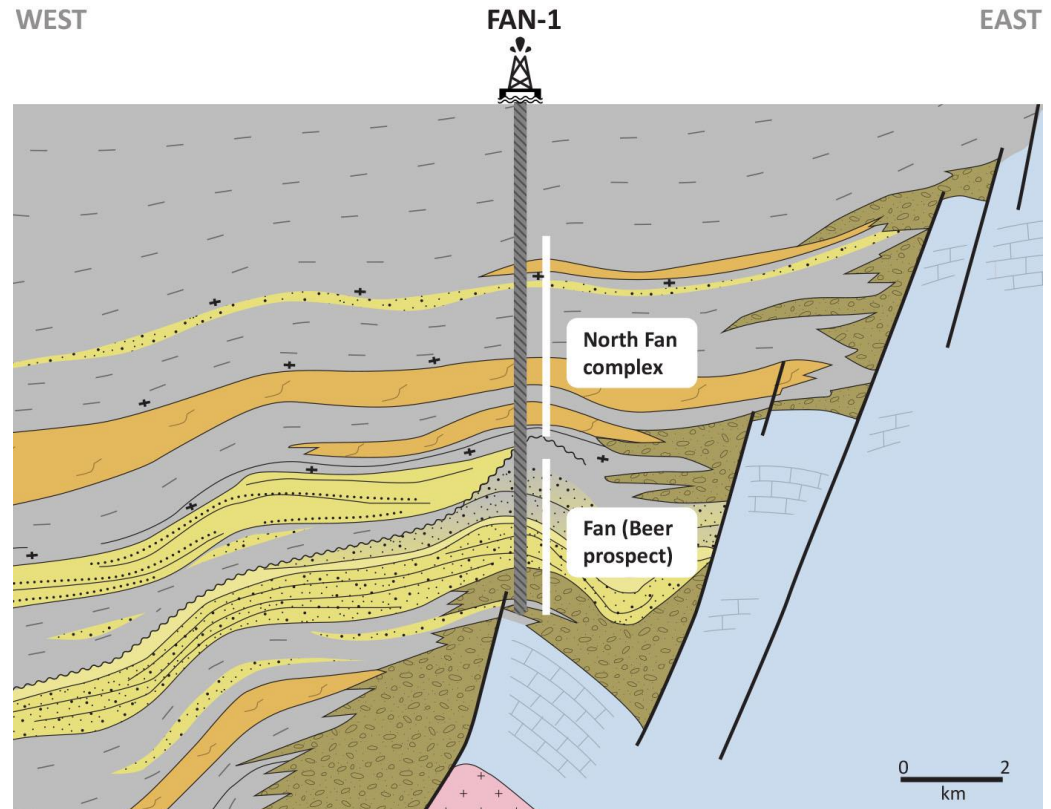
FAN-1 and SNE-1 seismic section/schematic



FAN-1 oil discovery



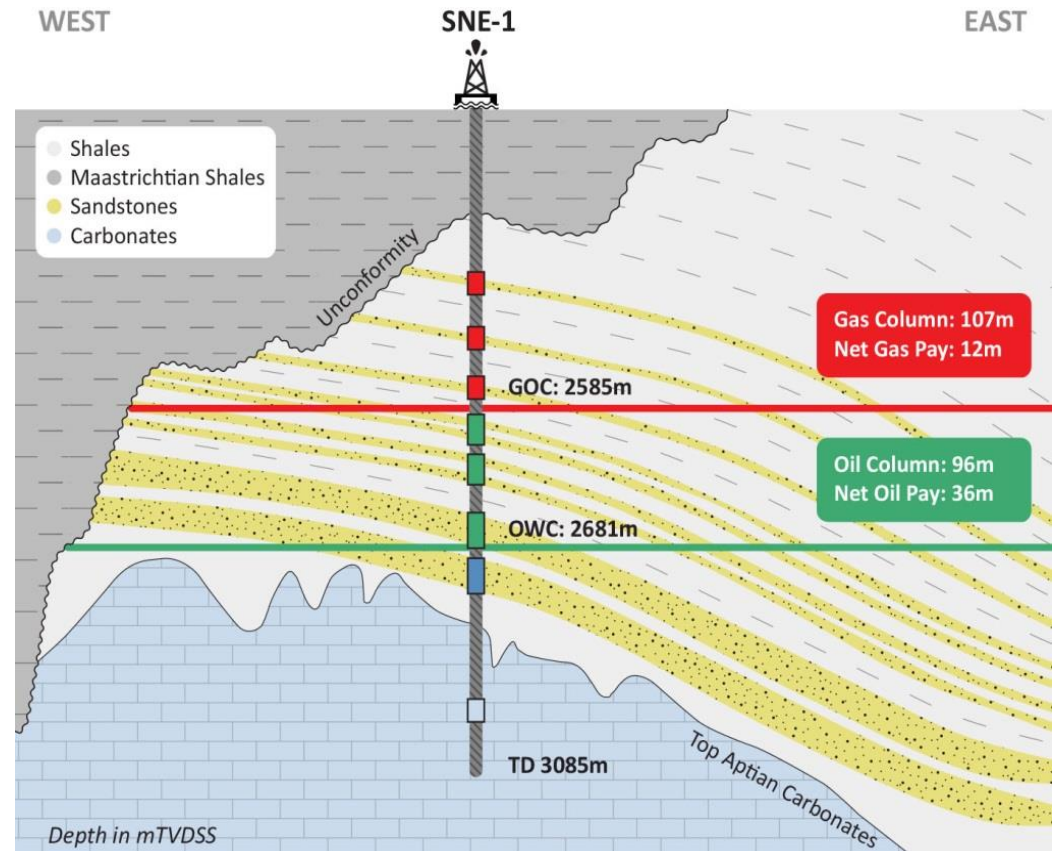
- **Proved prolific source:** High quality light oil in a stratigraphic stacked Cretaceous sand sequence
- **Oil gravity 28-41 degrees API**
- **Gross oil bearing interval >500m** with no oil-water contact encountered (29m net)
- **Operator gross oil (STOIIP) in place**
 - P90: 250 mmbbls
 - P50: 950 mmbbls
 - P10: 2,500 mmbbls
- **Proved oil migration model up dip** and helped de-risk SNE pre-drill



SNE-1 oil discovery



- **World's largest oil discovery** in 2014 (IHS CERA)
- **Very good reservoir** in a well defined Cretaceous structural trap
- **Oil gravity 32 degrees API**
- **Gross oil column of 96m** (36m net) with a gas cap
- **Contingent recoverable resource**
 - P90: 150 mmbbls
 - P50: 330 mmbbls
 - P10: 670 mmbbls
- **Initial focus of the joint venture evaluation work program**

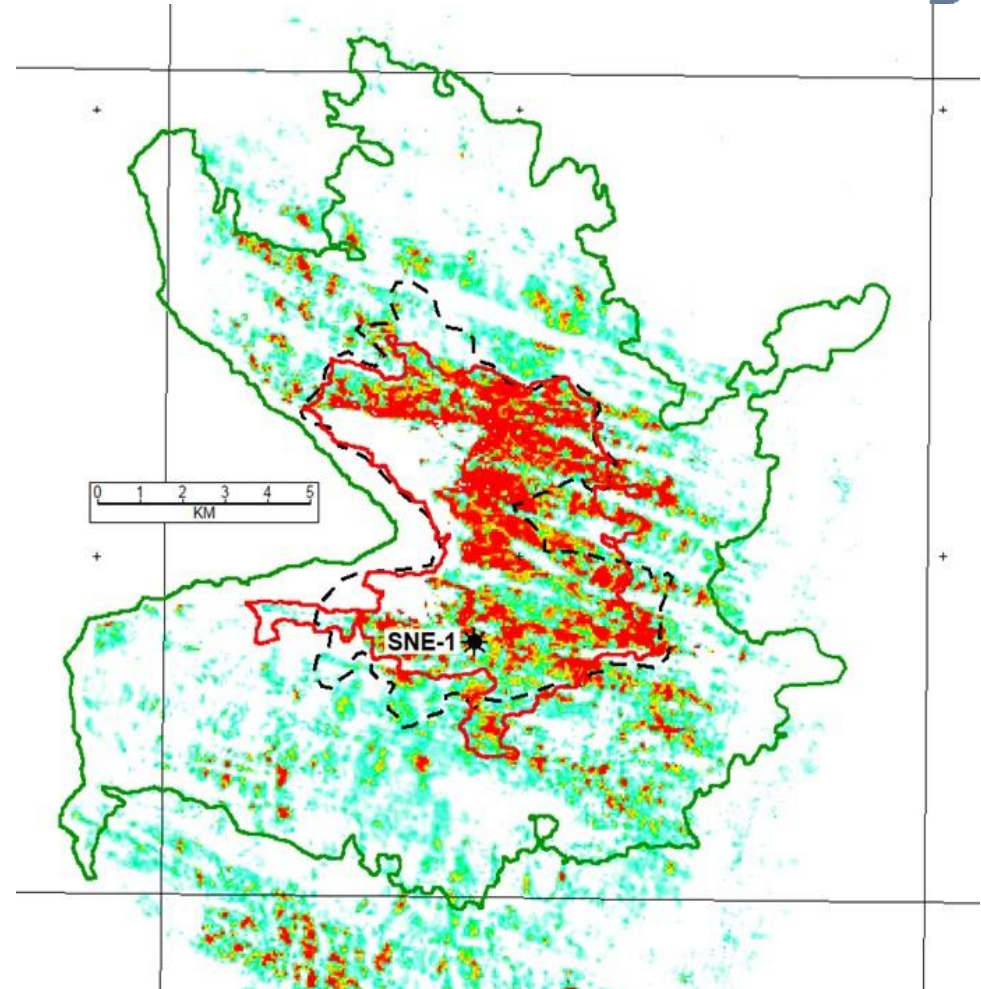


SNE top reservoir



- **Strong conformance of amplitude with structure**
- **Pre-drill estimate 154 mmbbls (gross)** (best estimate prospective resource)*
- **Pre drill estimate at amplitude anomaly** came from gas cap only
- **Post drill field estimated to be significantly larger** after discovering a 96m gross oil column

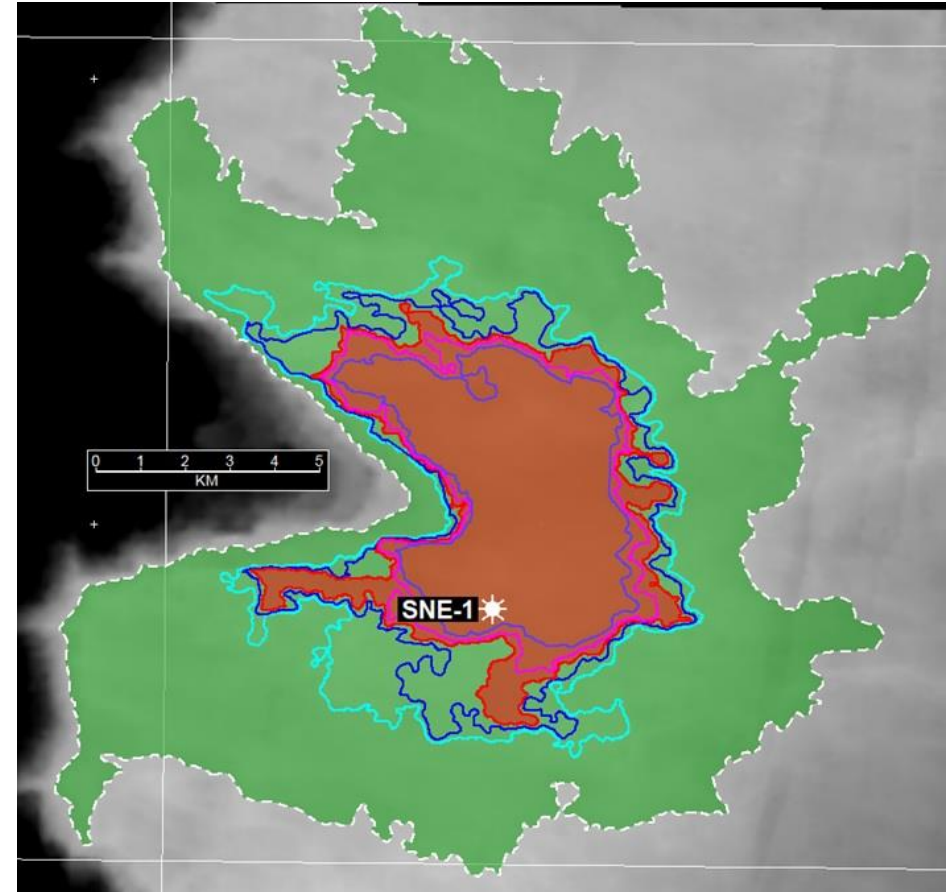
- Pre drill field outline
- Gas-Oil contact
- Oil-Water contact



SNE appraisal drilling



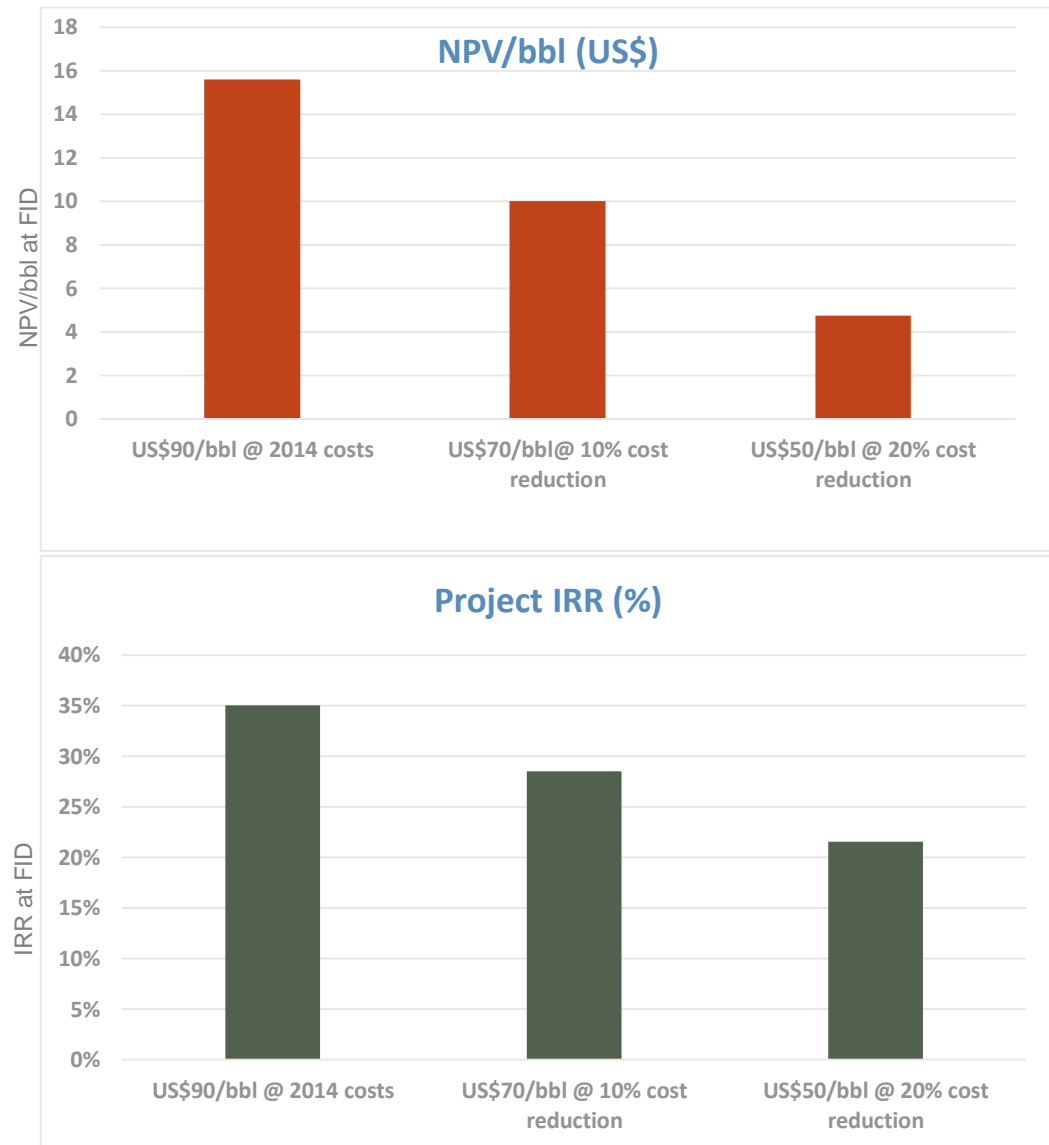
- **Aimed to achieve declaration of commerciality** to prove minimum economic field size (MEFS)
- **Operator MEFS ~200mmbbls**
- **Low risk appraisal:** 1C resource is 150mmbbls, 2C resource 330mmbbls
- **Flow testing (DST's)** and coring
- **Each well may take ~40 days** to drill plus testing / coring of ~2-4 weeks



SNE economics*

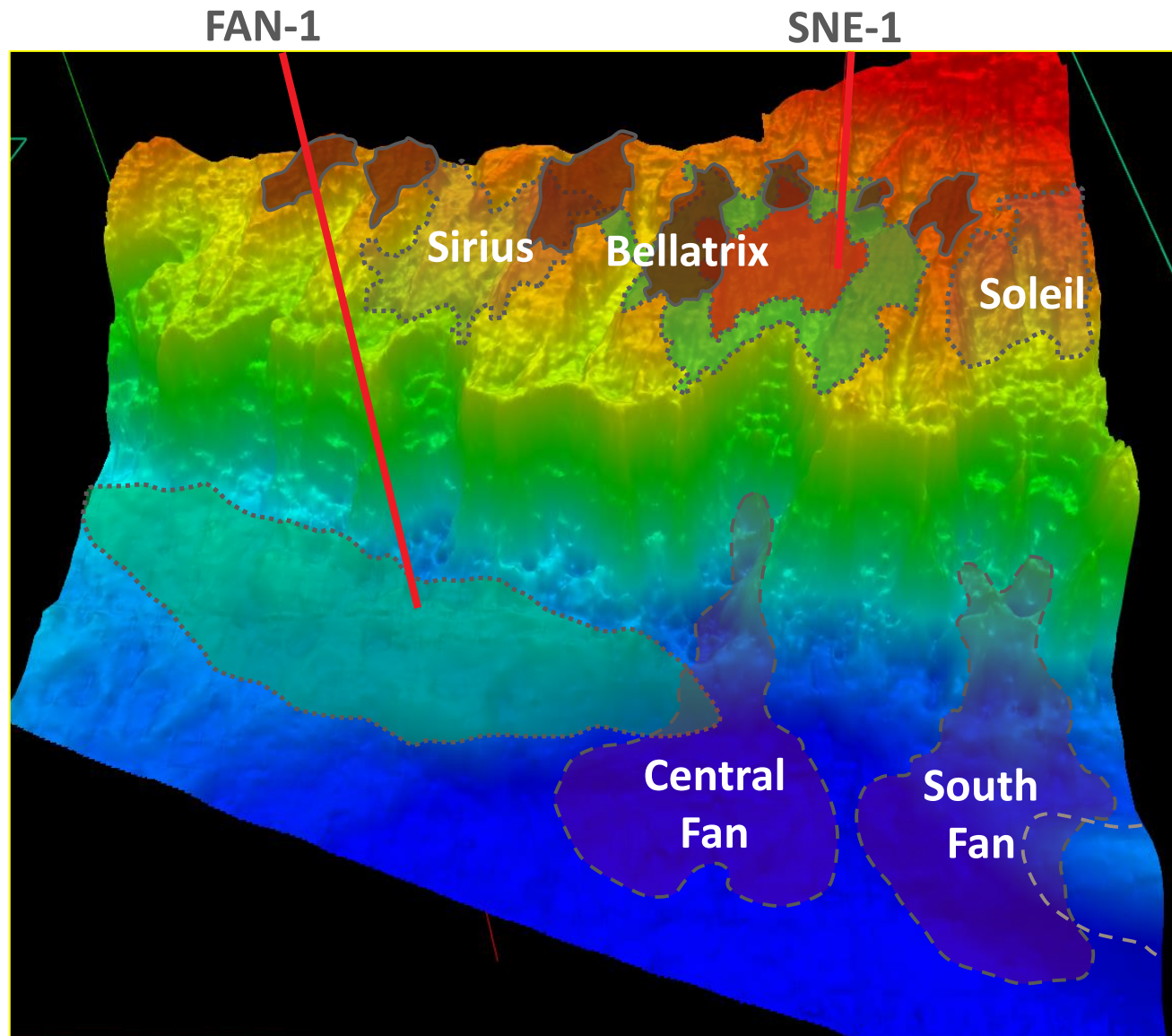


- SNE has robust economics
- Base assumption is 330mmbbls (50mmbbls net)*
- CAPEX \$17-26/bbl
- OPEX \$5-15/bbl
- US\$10 NPV/bbl at US\$70 oil
- SNE likely to be standalone at >200mmbbls*
- Brent futures: ~US\$70/bbl
- Macro headwinds (soft oil price, poor sentiment, lack of success in sector)



*Source: Cairn Energy estimates (refer Cairn Energy Capital Markets Day presentation 11/05/2015)

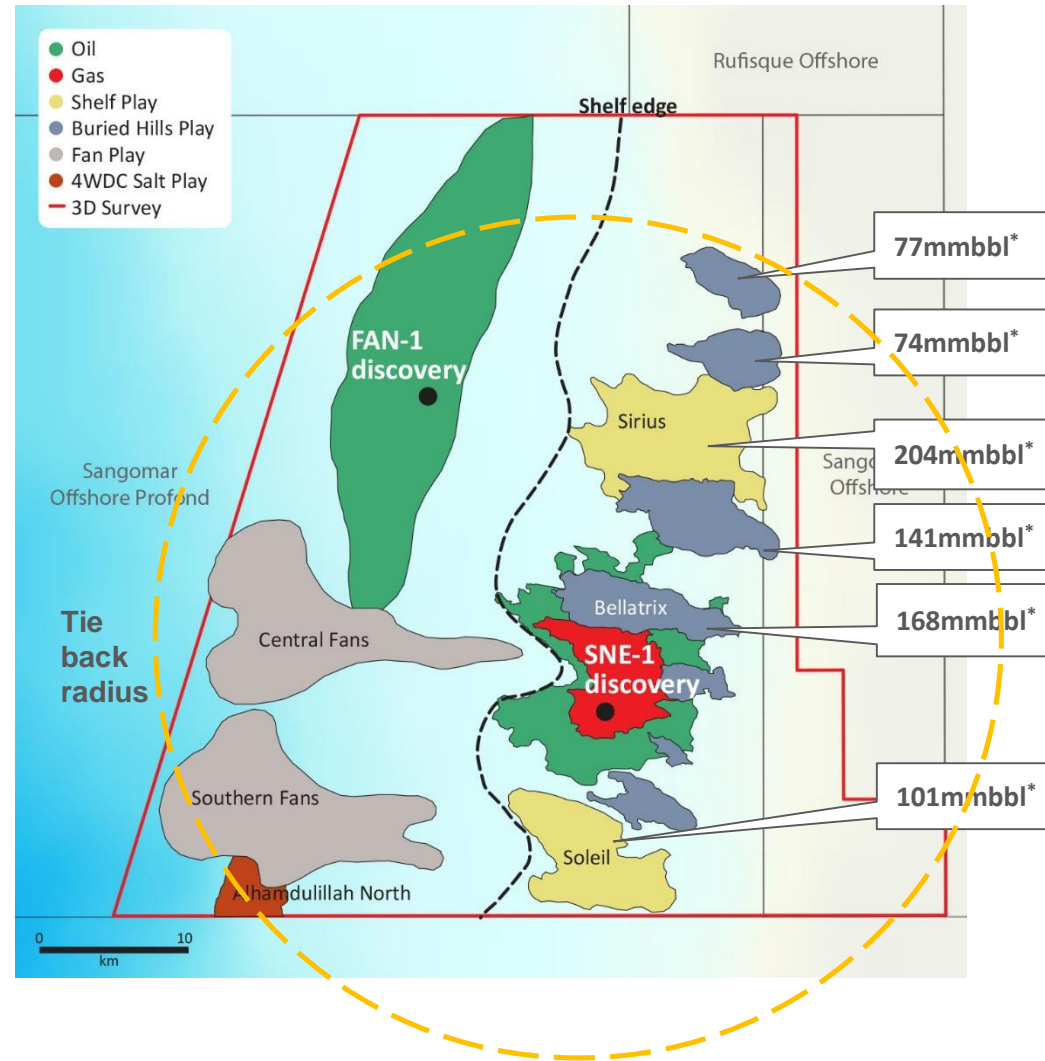
The shelf and fan area



Senegal prospects



- **Extensive prospect inventory**
 - >1.5 bn barrels of gross unrisked prospective resources mapped on high quality 3D seismic
- **Two distinct play types on shelf**
 - Buried Hills (e.g. Bellatrix)
 - Shelf Edge (e.g. SNE look-a-likes)
- **Minimum economic field size** for a standalone FPSO hub is ~200 mmbbls (Operator estimate)
- **Tie-back range is 35-40km radius** for prospects with ~75 mmbbls or more (Operator estimate)



Senegal undrilled prospect inventory*



Prospect	Area (km ²)	Target Reservoir	Low Estimate (mmbbbls)	Best Estimate (mmbbbls)	High Estimate (mmbbbls)	FAR Working Interest	Unrisked Best Estimate Prospective Resources net to FAR (mmbbbls)	Chance of Discovery	Risked Best Estimate Prospective Resources net to FAR (mmbbbls)
Sirius	79	Albian	83	204	474	15%	30.6	52%	16.0
Soleil	88	Albian	47	101	209	15%	15.1	43%	6.5
Bellatrix (BH2)	33	Cenomanian	69	168	356	15%	25.1	49%	12.2
Sabar (BH3)	46	Cenomanian	61	141	293	15%	21.2	37%	7.9
Lamb-Ji (BH4)	21	Cenomanian	33	74	154	15%	11.1	33%	3.7
Ramatou (BH5)	15	Cenomanian	32	77	176	15%	11.6	33%	3.8
Central Fan	174	Turonian	101	338	879	15%	50.6	19%	9.8
South Fan	114	Turonian	78	258	654	15%	38.6	19%	7.5
Alhamdulillah	88	Turonian to Aptian	44	140	321	15%	21.0	37%	7.8
Total				1500			225		75

Operator chance of discovery significantly higher than FAR:
Bellatrix 80%, Sirius 54%, Soleil 67%

(refer Cairn Energy Capital Markets Day 11 May 2015)

*Reference FAR ASX release dated 13 Apr 2015 best estimate, gross, unrisked prospective resources, 100% basis, oil only

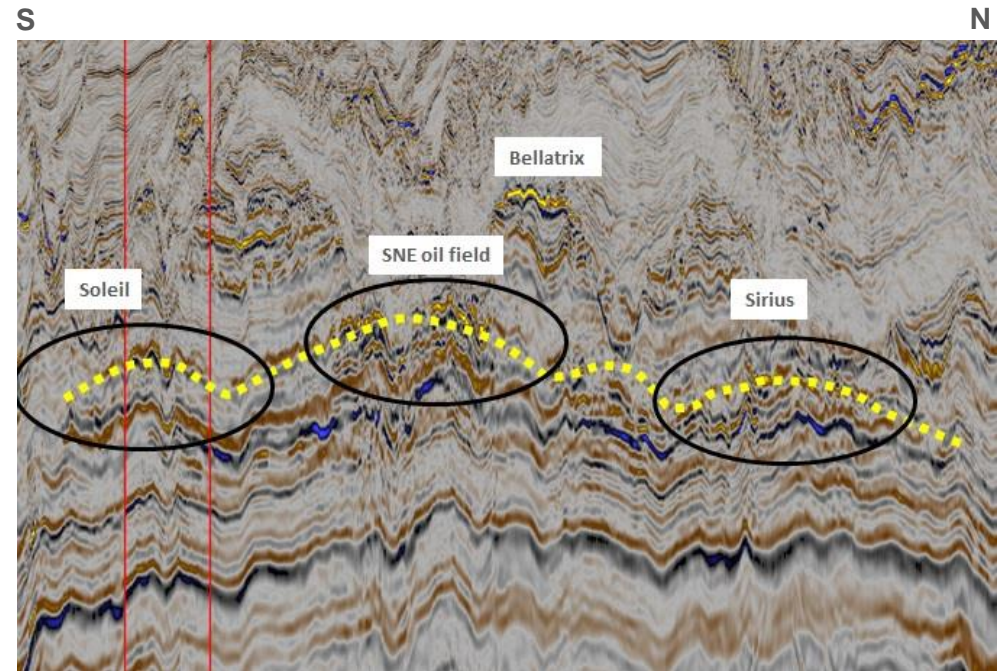
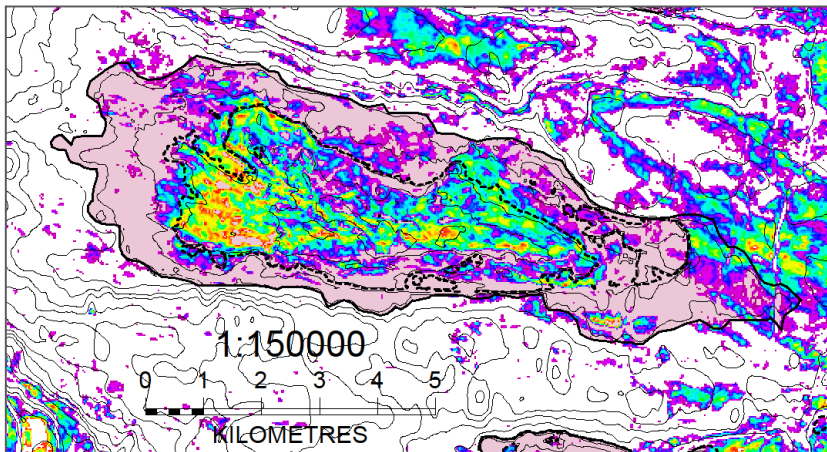
Bellatrix prospect



- Buried Hill play
- Strong amplitude response
- Amplitude conforms to structure
- Prospect overlies northern extent of SNE field

Bellatrix unrisked prospective resources*

Low estimate	69 mmbbls
Best estimate	168 mmbbls
High estimate	356 mmbbls

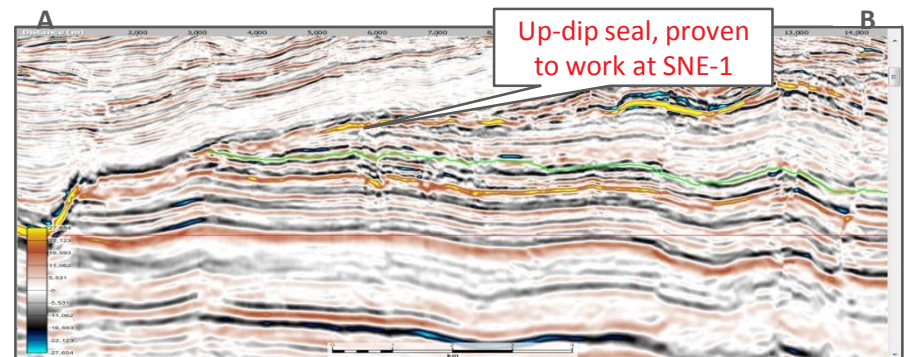
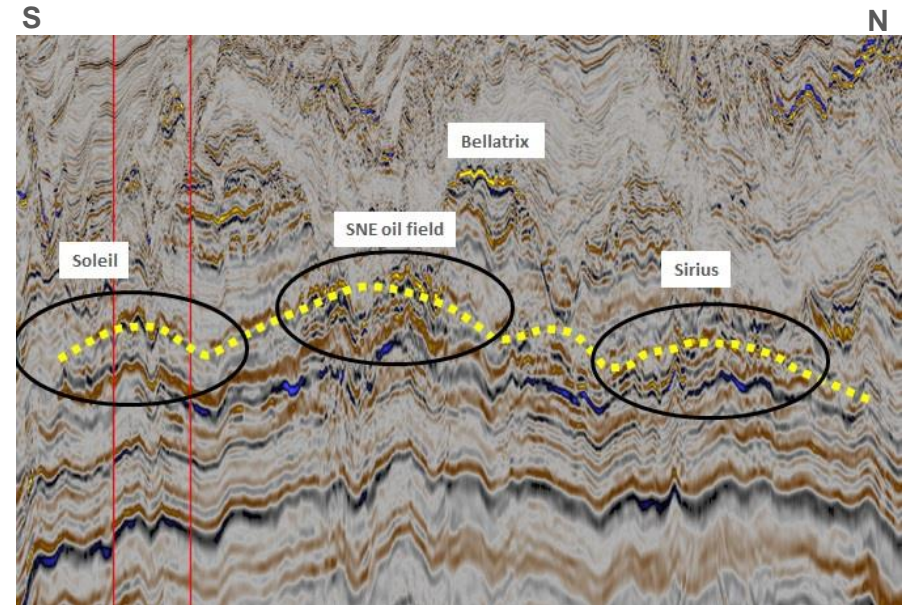
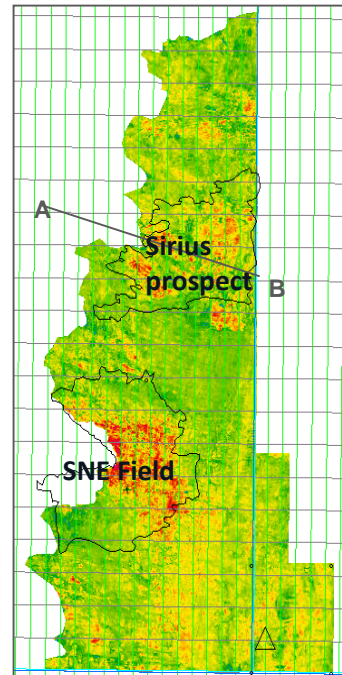


*Reference FAR ASX releases dated 13 Apr 2015 best estimate, gross, unrisked prospective resources, 100% basis, oil only

Sirius prospect



- Shelf edge play
- “Lookalike” to SNE
- Amplitude conforms to structure
- On trend with the SNE field

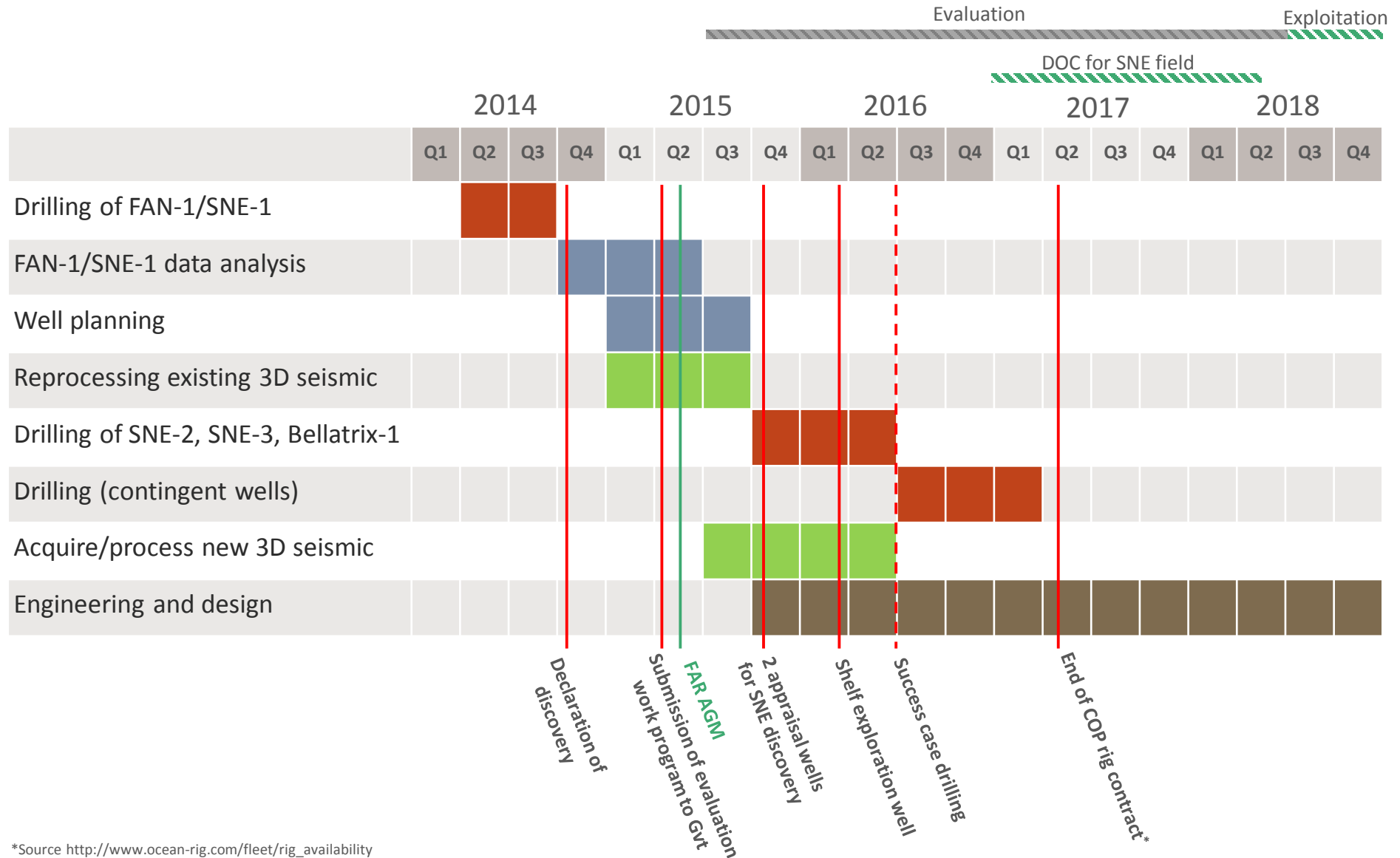


Sirius unrisked prospective resources*

Low estimate	84 mmbbls
Best estimate	204 mmbbls
High estimate	474 mmbbls

*Reference FAR ASX releases dated 13 Apr 2015 best estimate, gross, unrisked prospective resources, 100% basis, oil only

Senegal project timetable



2015 revealing the prize

- **SNE was the number one oil discovery** worldwide in 2014
- **Appraisal of SNE starts 4Q 2015**
- **100% success rate offshore Senegal** (2 new oil field discoveries from 2 exploration wells)
- **Firm commitment to drill** two low risk SNE appraisal wells and one new exploration target
- **Undrilled exploration prospects** with >1.5bn bbls potential have de-risked through success
- **JV committed** to evaluation work program
- **FAR committed to finding more elephants** lurking under Senegalese waters



Contact us

Level 17, 530 Collins Street
Melbourne VIC 3000 Australia
T: +61 3 9618 2550

www.far.com.au



Disclaimer

- This presentation has been prepared by FAR Limited ('FAR'). It should not be considered as an offer or invitation to subscribe for or purchase any shares in FAR or as an inducement to make an offer or invitation with respect to those securities. No agreement to subscribe for shares in FAR will be entered into on the basis of this presentation.
- This presentation contains forward-looking statements that are not based on historical fact, including those identified by the use of forward-looking terminology containing such words as 'believes', 'may', 'will', 'estimates', 'continue', 'anticipates', 'intends', 'expects', 'should', 'schedule', 'program', 'potential' or the negatives thereof and words of similar import.
- FAR cautions that these forward-looking statements are subject to risks and uncertainties that could cause actual events or results to differ materially from those expressed or implied by the statements. The forward looking statements are expressly subject to this caution. FAR makes no representation, warranty (express or implied), or assurance as to the completeness or accuracy of these forward-looking statements and, accordingly, expresses no opinion or any other form of assurance regarding them. FAR will not necessarily publish updates or revisions of these forward-looking statements to reflect FAR's circumstances after the date hereof.
- By its very nature exploration and development of oil and gas is high risk and is not suitable for certain investors. FAR shares are a speculative investment. There are a number of risks, both specific to FAR and of a general nature which may affect the future operating and financial performance of FAR and the value of an investment in FAR including and not limited to economic conditions, stock market fluctuations, oil and gas demand and price movements, regional infrastructure constraints, securing drilling rigs, timing of approvals from relevant authorities, regulatory risks, operational risks, reliance on key personnel, foreign currency fluctuations, and regional geopolitical risks.
- This presentation does not purport to be all inclusive or to contain all information which you may require in order to make an informed assessment of the Company's prospects. You should conduct your own investigation, perform your own analysis, and seek your own advice from your professional adviser before making any investment decision.
- Cautionary Statement for Prospective Resource Estimates – With respect to the Prospective Resource estimates contained within this report, it should be noted that the estimated quantities of Petroleum that may potentially be recovered by the future application of a development project may relate to undiscovered accumulations. These estimates have an associated risk of discovery and risk of development. Further exploration and appraisal is required to determine the existence of a significant quantity of potentially moveable hydrocarbons.
- Information in this report relating to hydrocarbon resource estimates has been compiled by Peter Nicholls, the FAR exploration manager. Mr Nicholls has over 30 years of experience in petroleum geophysics and geology and is a member of the American Association of Petroleum Geology, the Society of Exploration Geophysicists and the Petroleum Exploration Society of Australia. Mr Nicholls consents to the inclusion of the information in this report relating to hydrocarbon Prospective Resources in the form and context in which it appears. The Prospective Resource estimates contained in this report are in accordance with the standard definitions set out by the Society of Petroleum Engineers, Petroleum Resource Management System.