



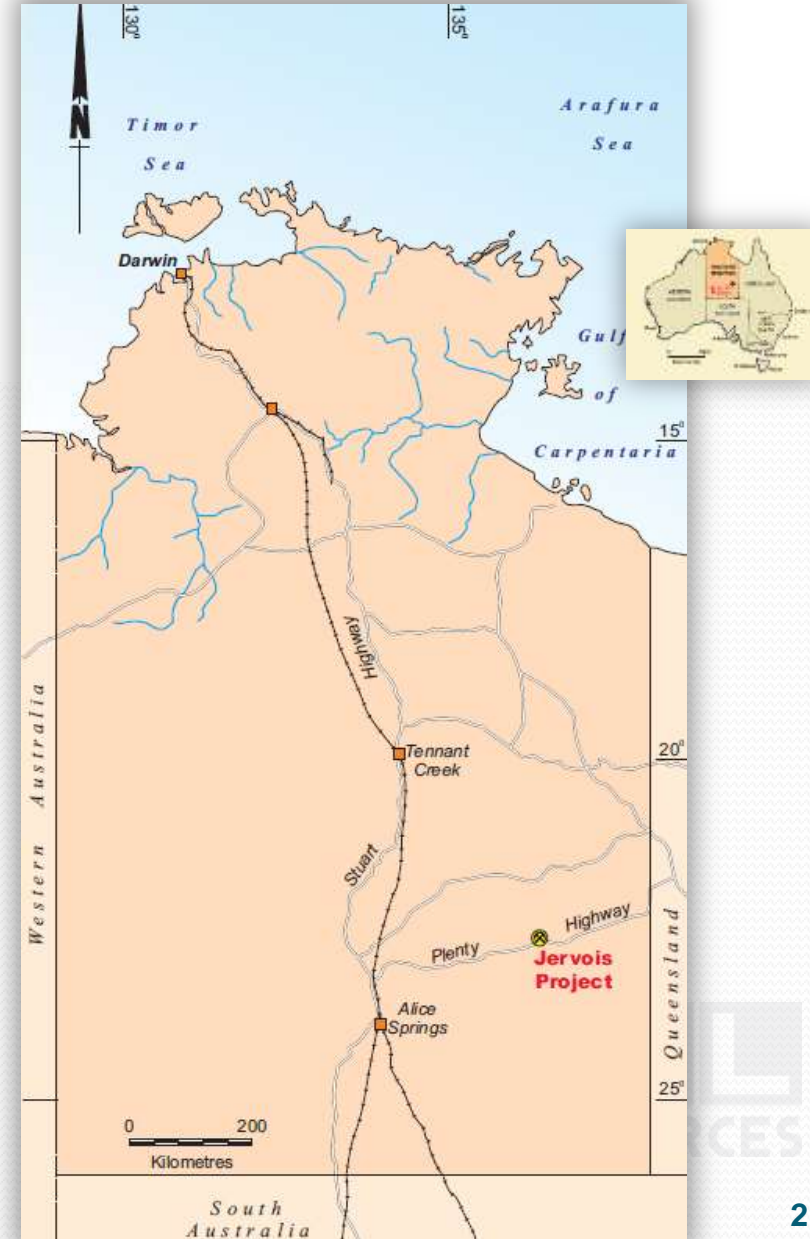
A landscape photograph of the Jervois Copper Project. In the center is a large, leafy tree with a white-painted trunk. To the left is a tall, rusted metal derrick. To the right is a large, rusted cylindrical tank. The ground is rocky and covered with sparse, dry vegetation. The sky is clear and blue.

# Jervois Copper Project

June 2014

# Jervois Project Setting

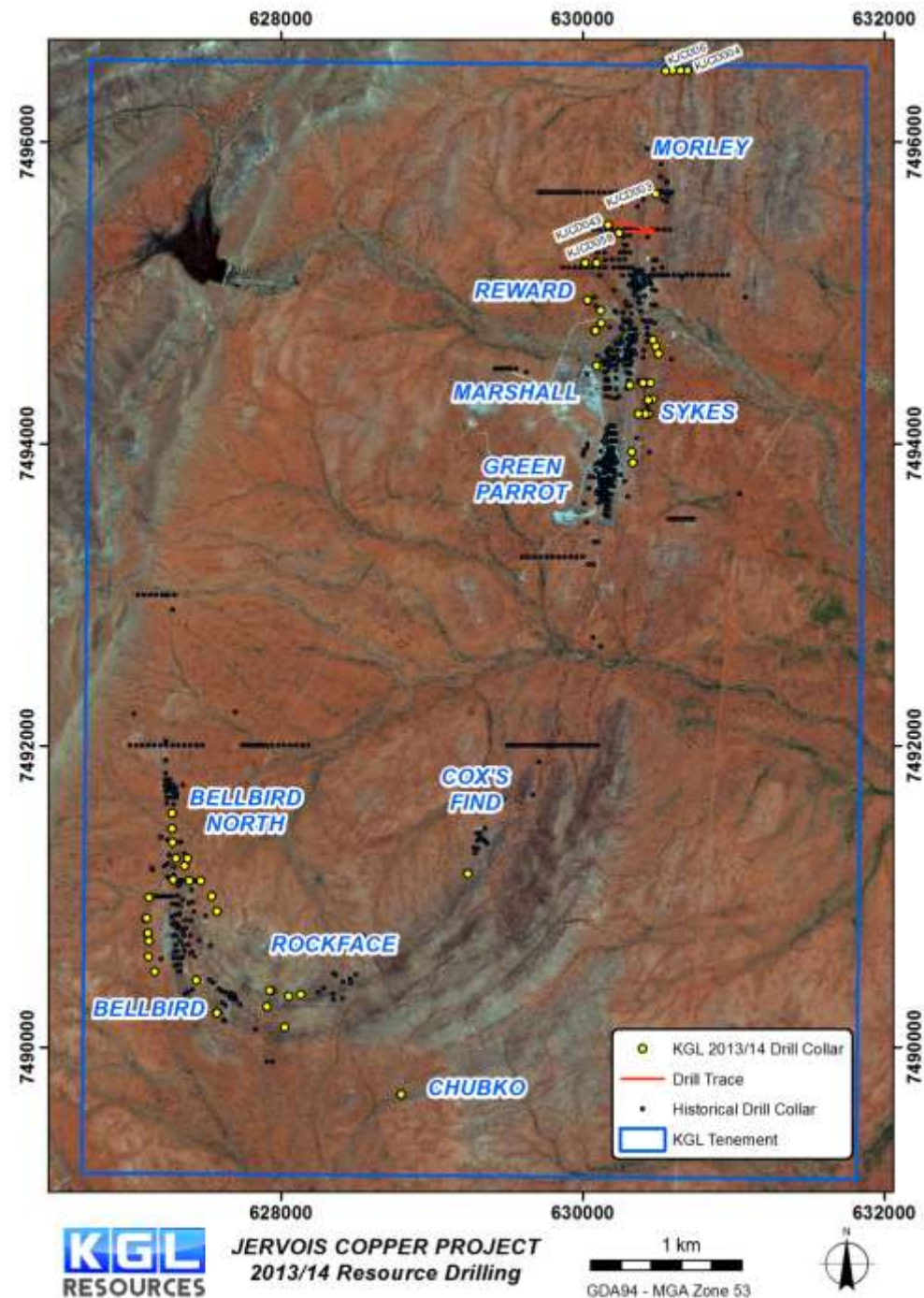
- Located 350 km north east of Alice Springs on the Plenty Highway
- 250 km away from the Alice Springs to Darwin Port rail link
- 31.4 km<sup>2</sup> exploration licence
- 6.5 km<sup>2</sup> granted mineral leases





# Jervois Project NT

- 12km strike length
- 30,000m drilling programme completed
- Resource Update Aug 14
- Pre-feasibility Study Sep 14





1930's







1950's





**Carting ore  
from Jervois  
to Mt Isa  
circa 1960**

Photos from "A son of the Red Centre" – K.G. Johannsen









**1960's**



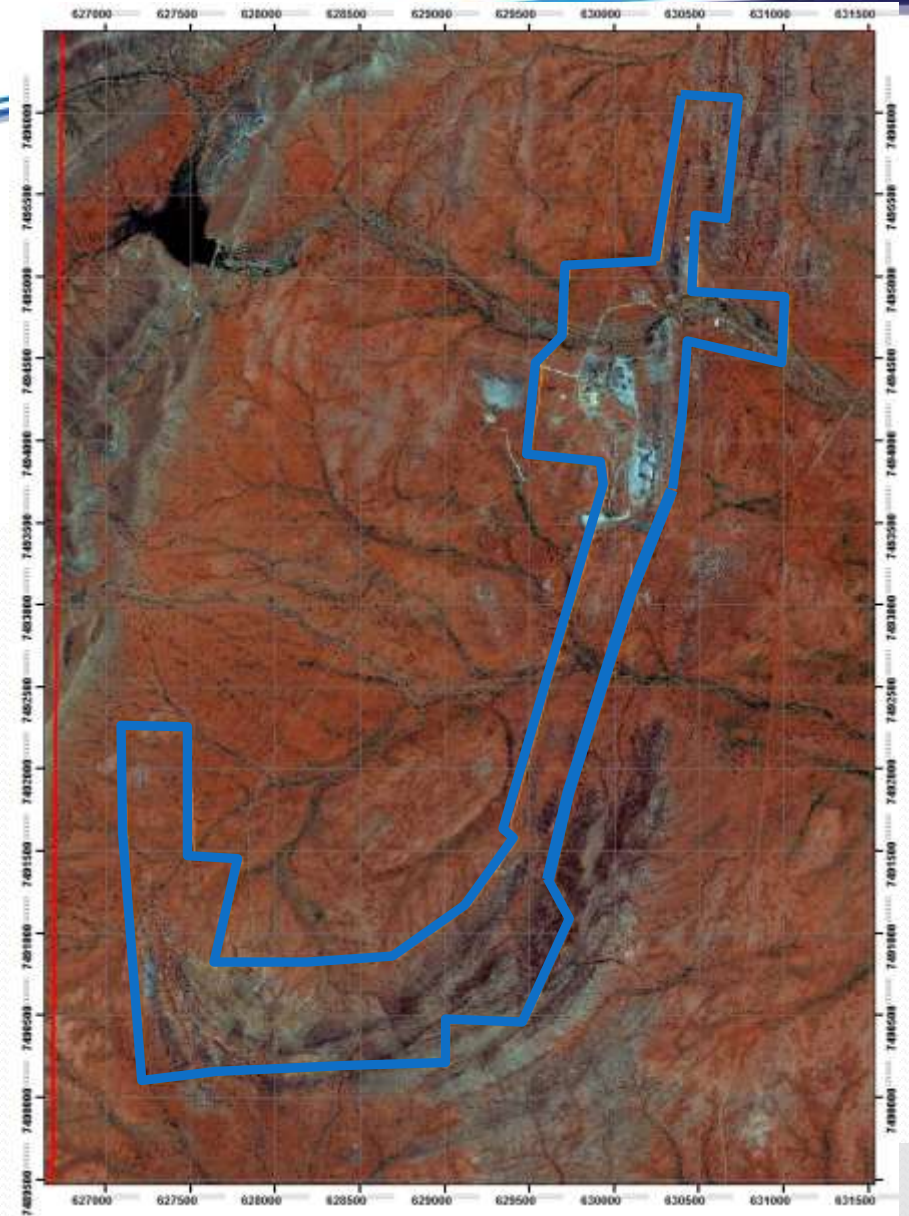


1980's





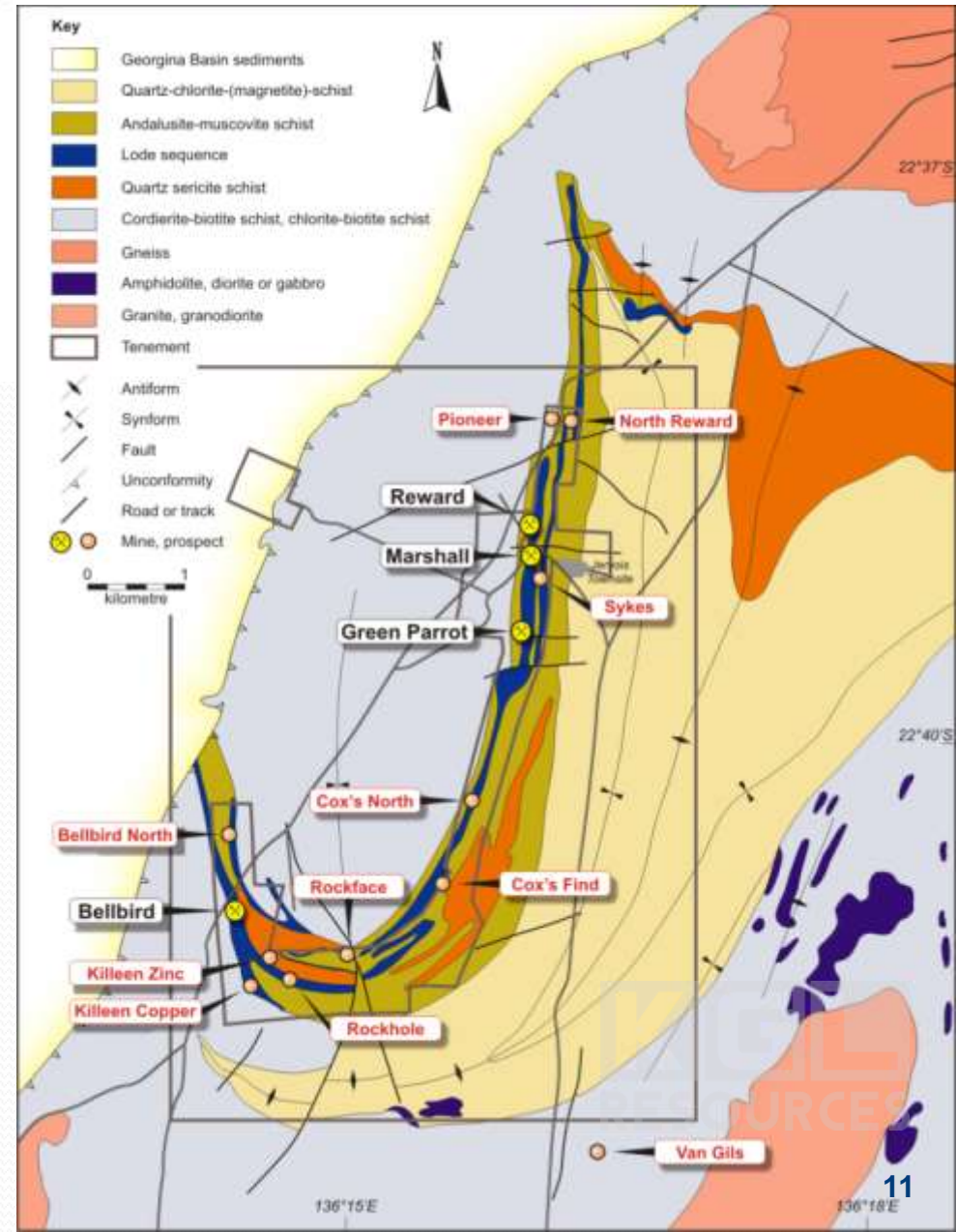
Existing Mineral License due to historical mining activities on the site



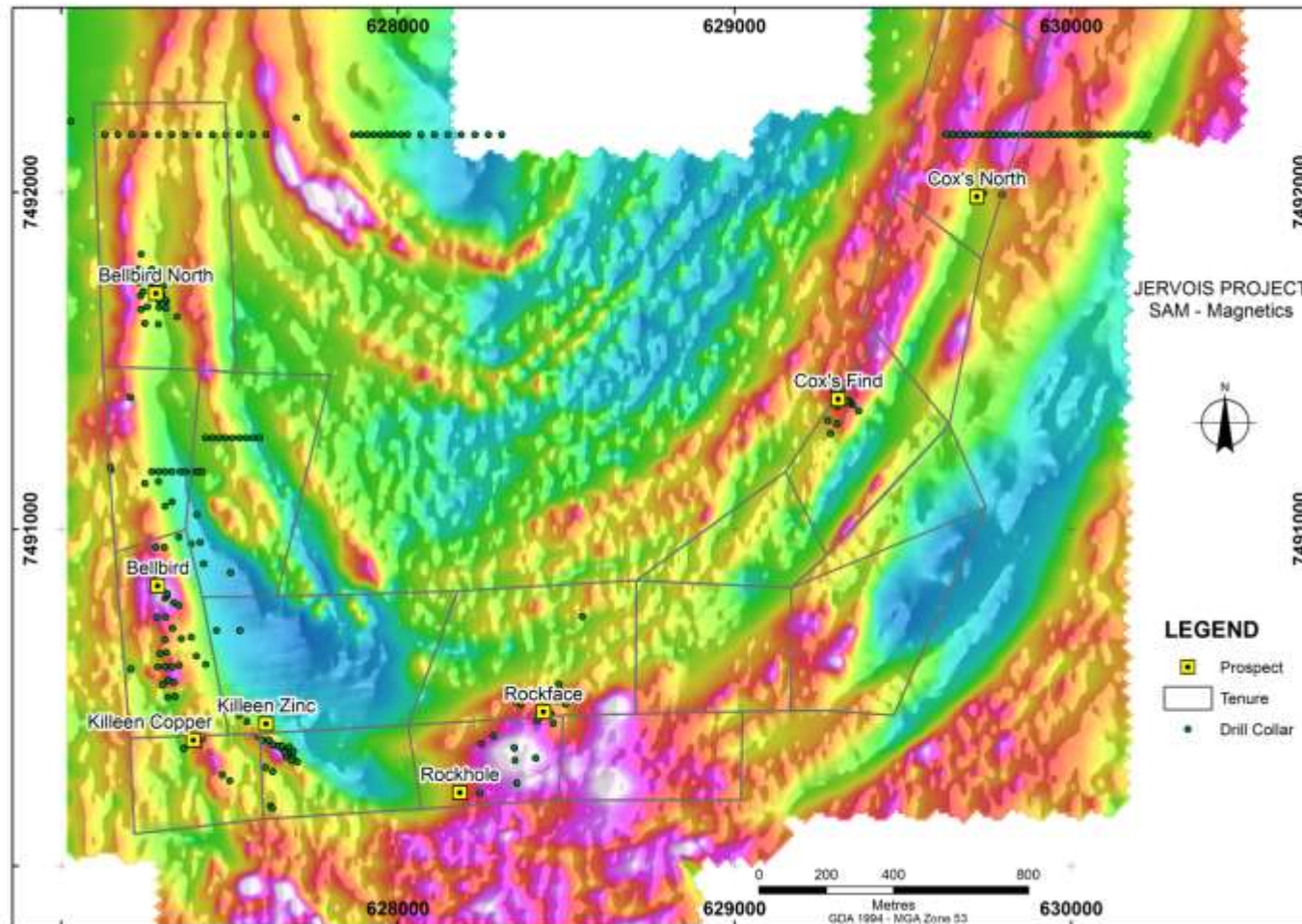


# Geological Setting

- Hosted by Bonya Schist in Eastern Arunta



# Magnetics





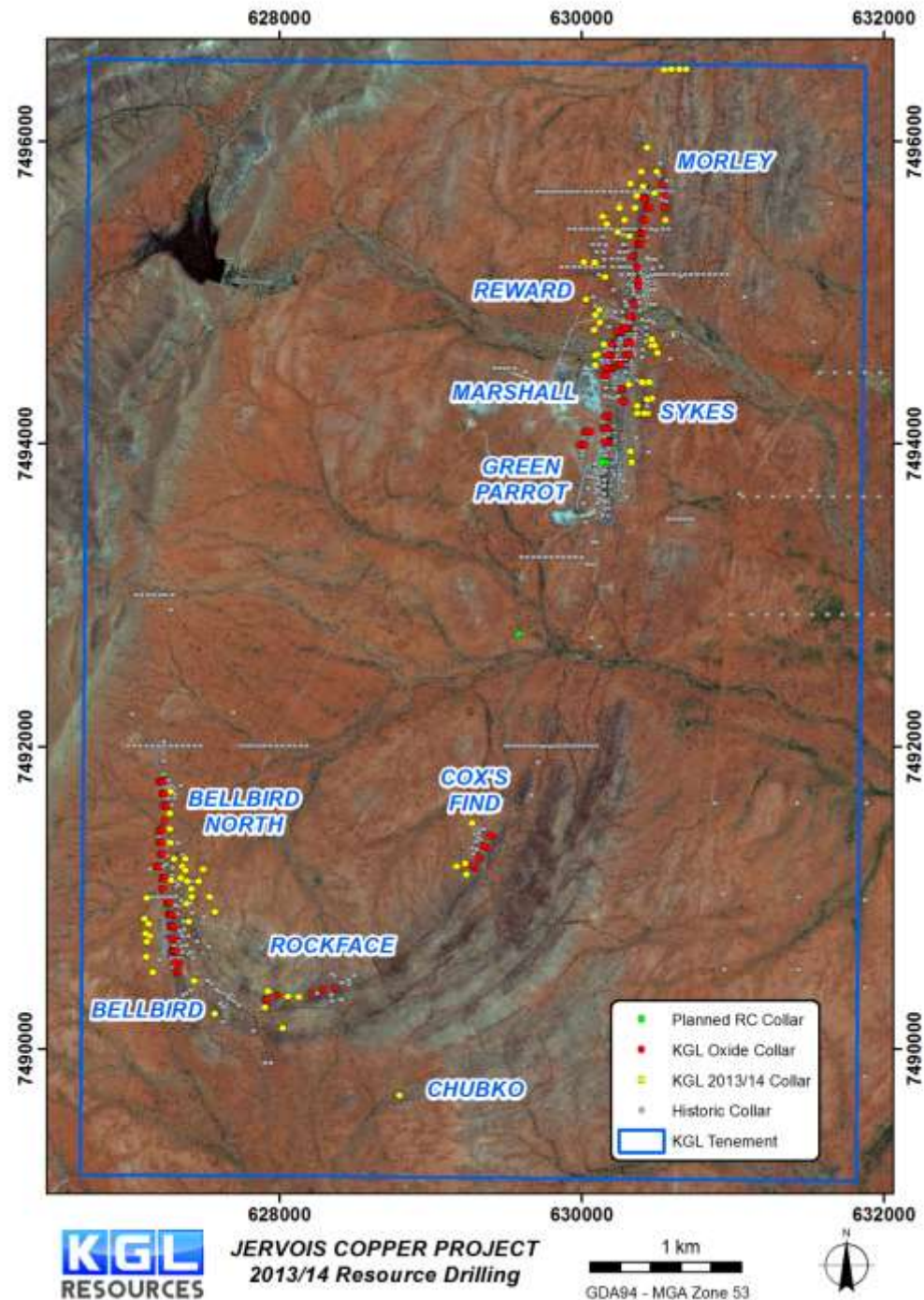
# Resource Extension Program

- 30,000m+ drilling commenced in September 2013
- Competitive drilling rates
- Combination of resource development and exploration



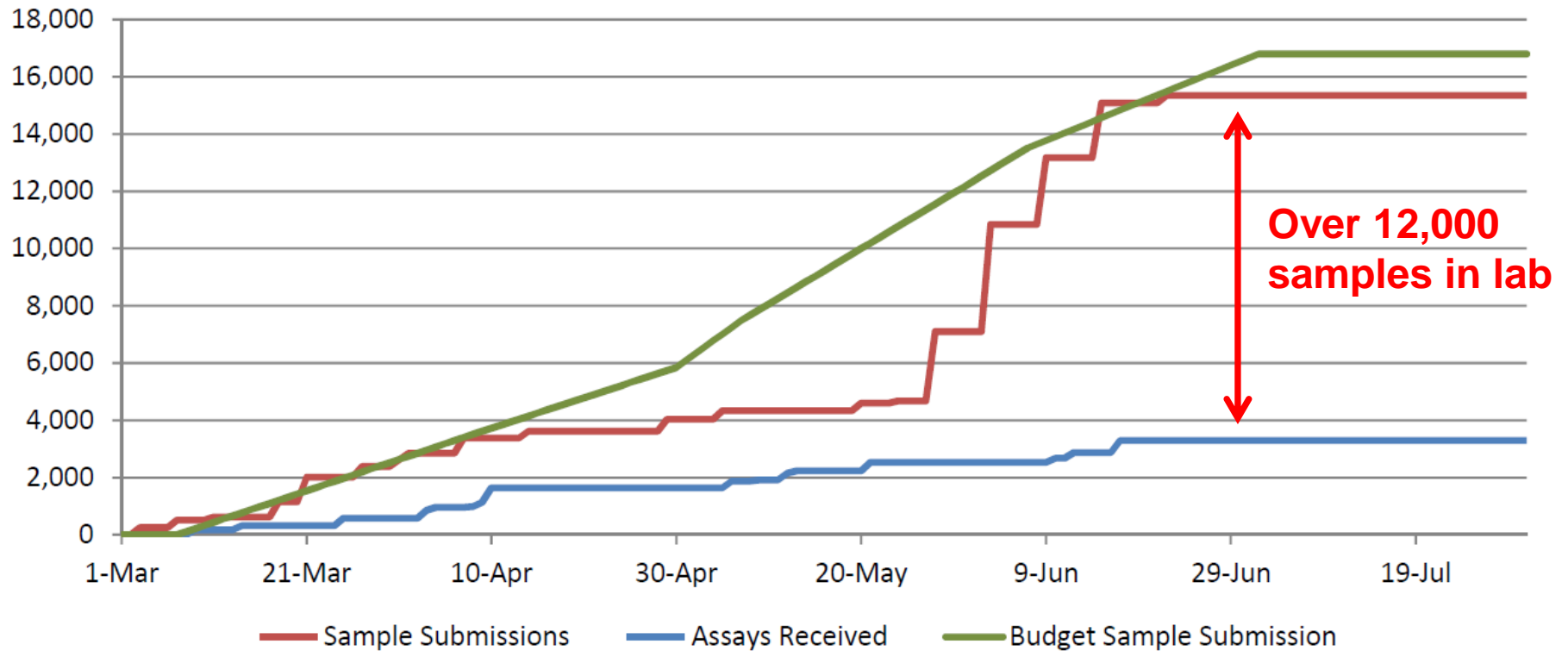
# Completed drill holes

- Deep Holes - Yellow
- Oxide Drill Holes - Red





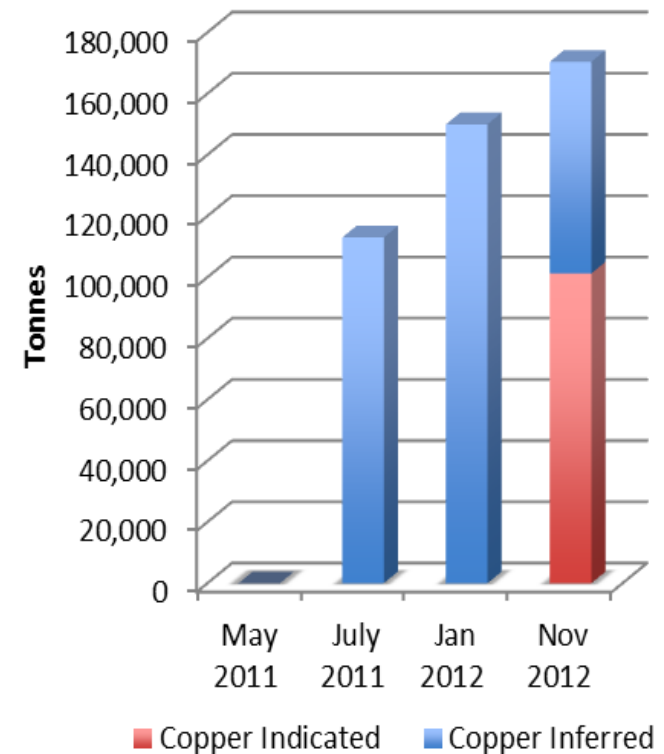
## Sample Submissions - Assays Received



# Mineral Resources

**High Grade Copper Resource**  
**13.5Mt @ 1.3% copper 25.8g/t Ag**

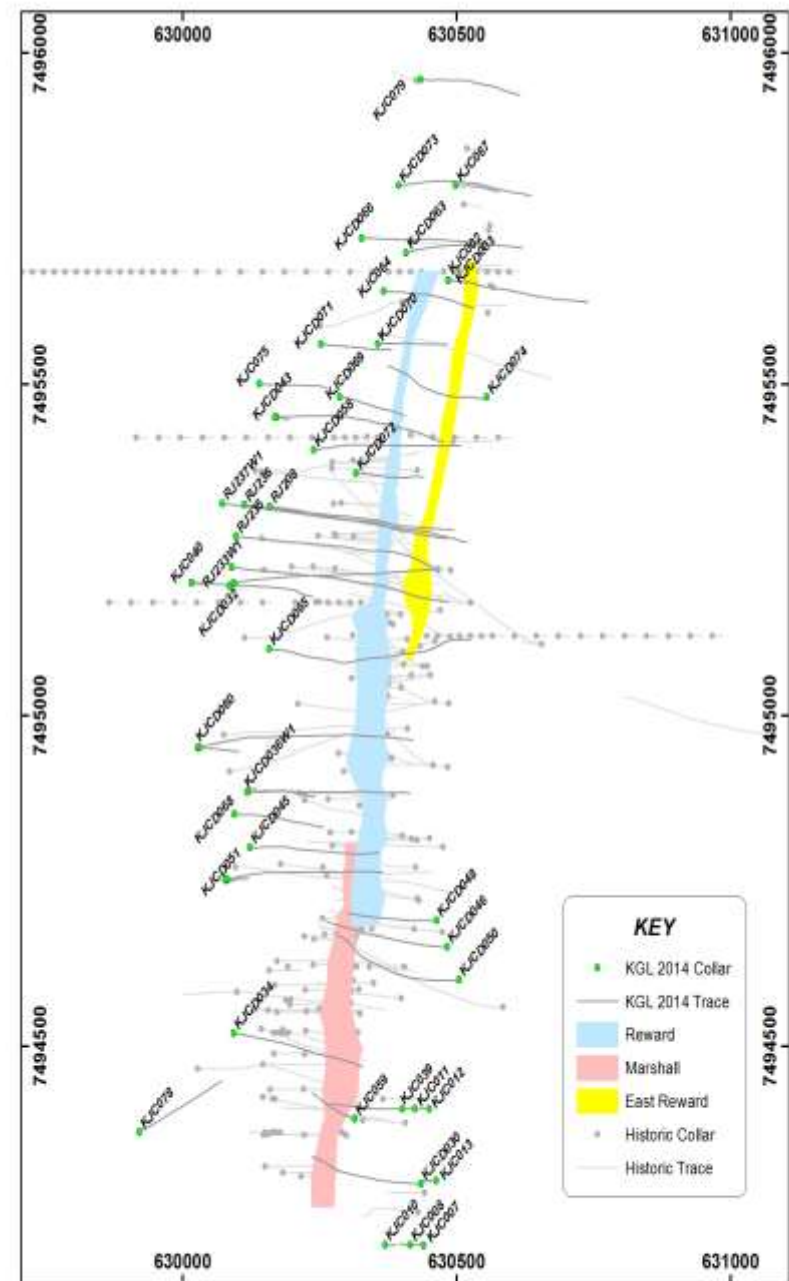
**Resource to be upgraded in August 2014**



**Tonnes of contained copper metal**

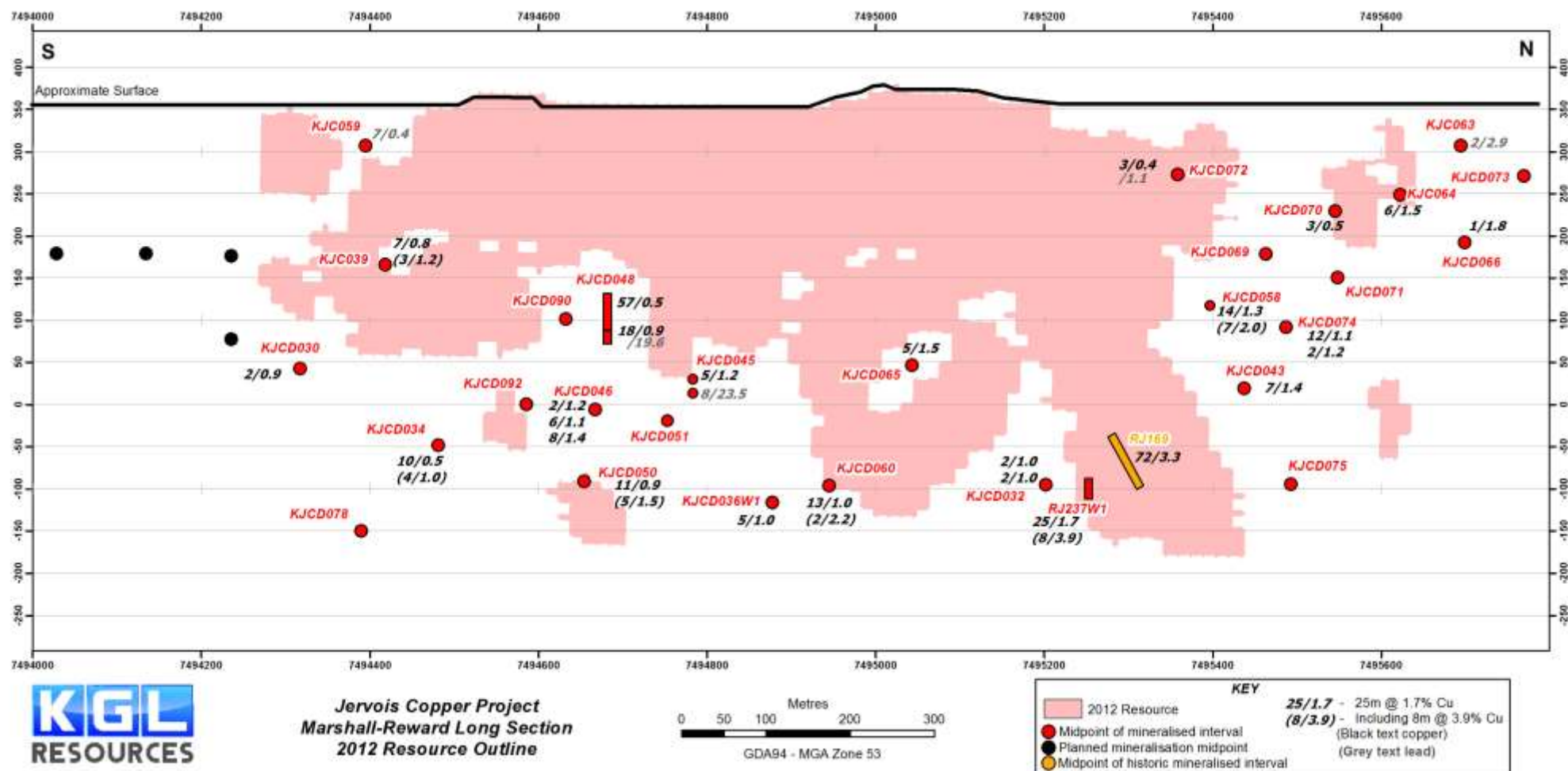


## Parallel mineralised zone discovered – Reward East



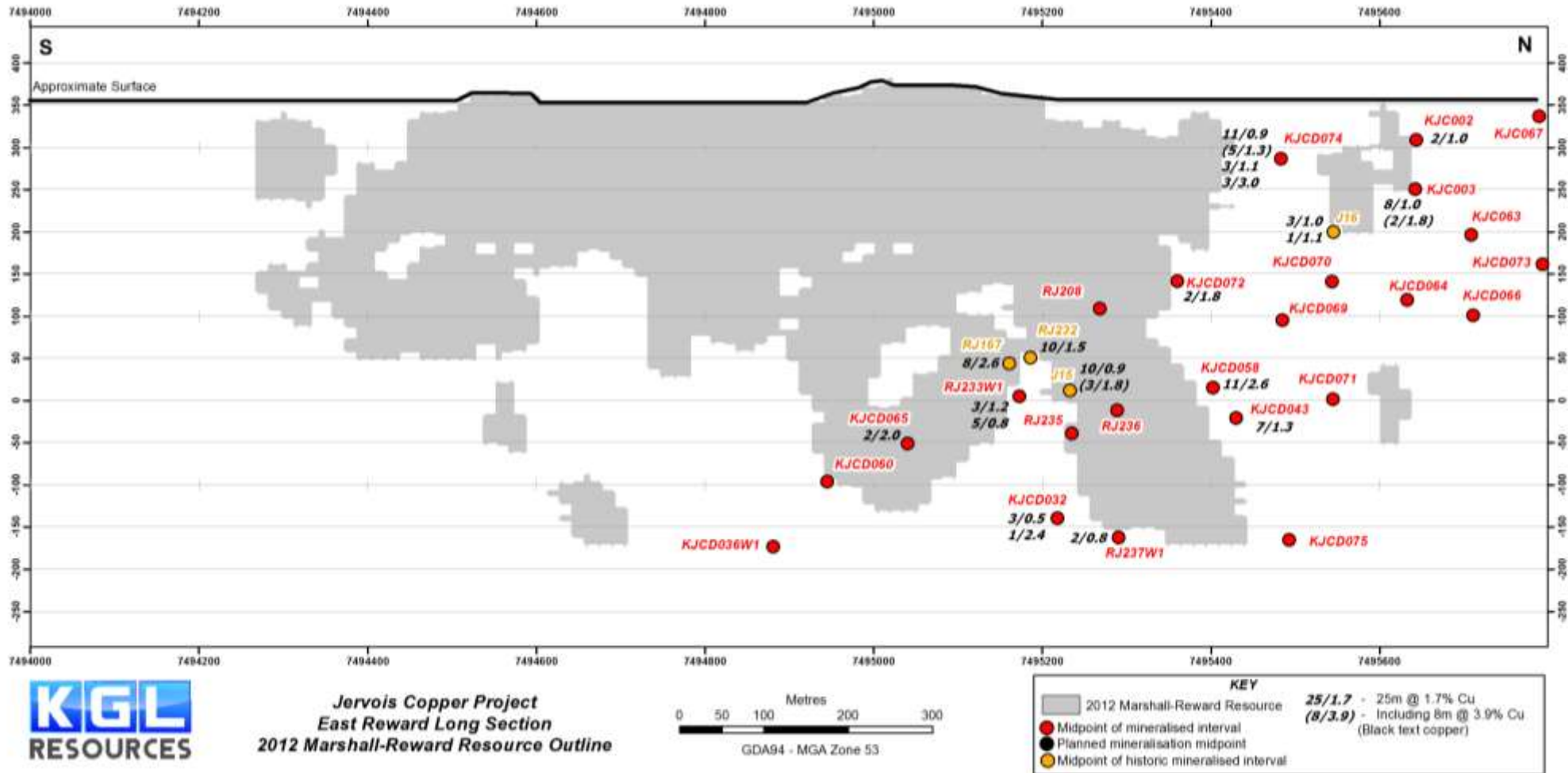
# Reward Long Section

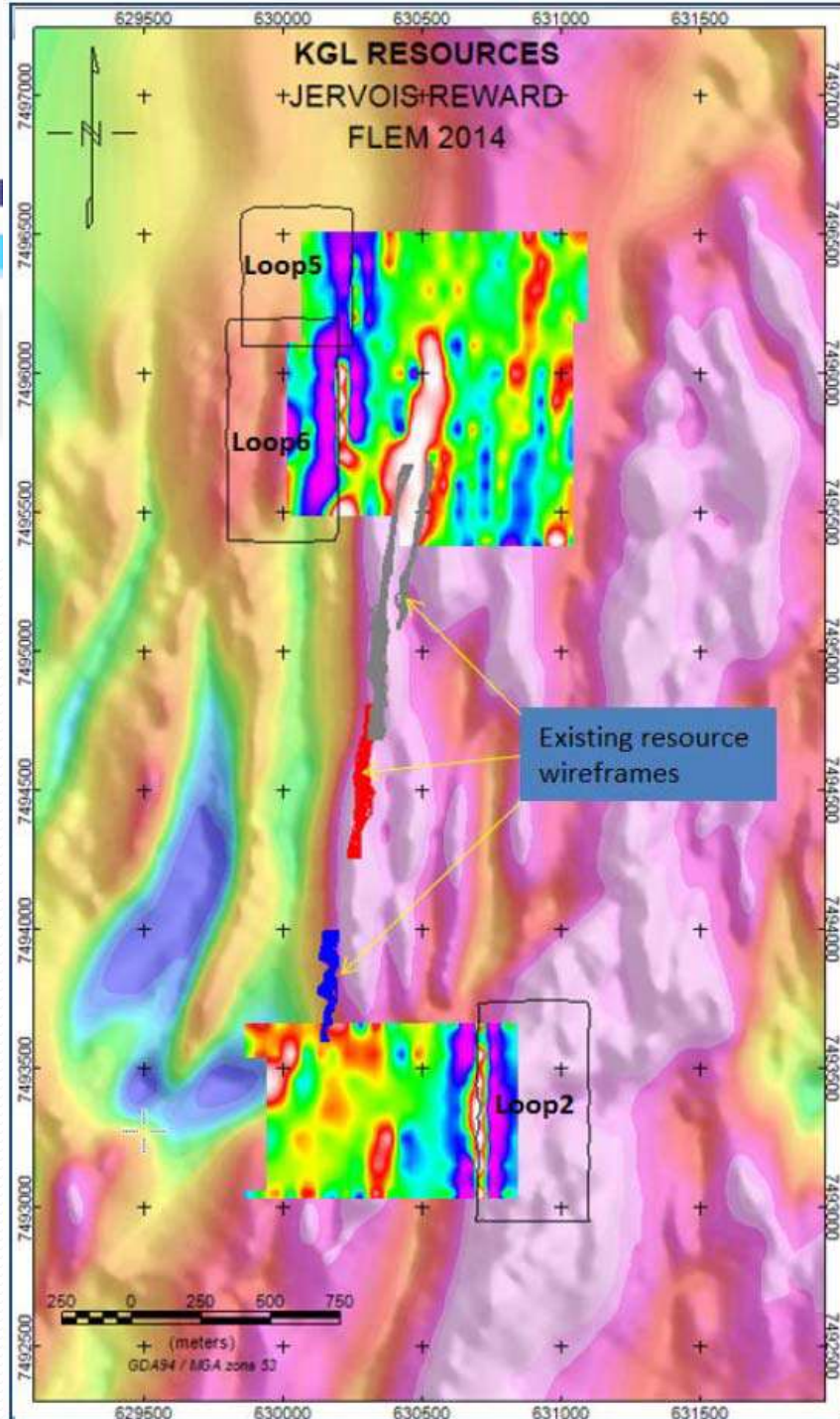
1.5 km strike length





# East Reward Long Section



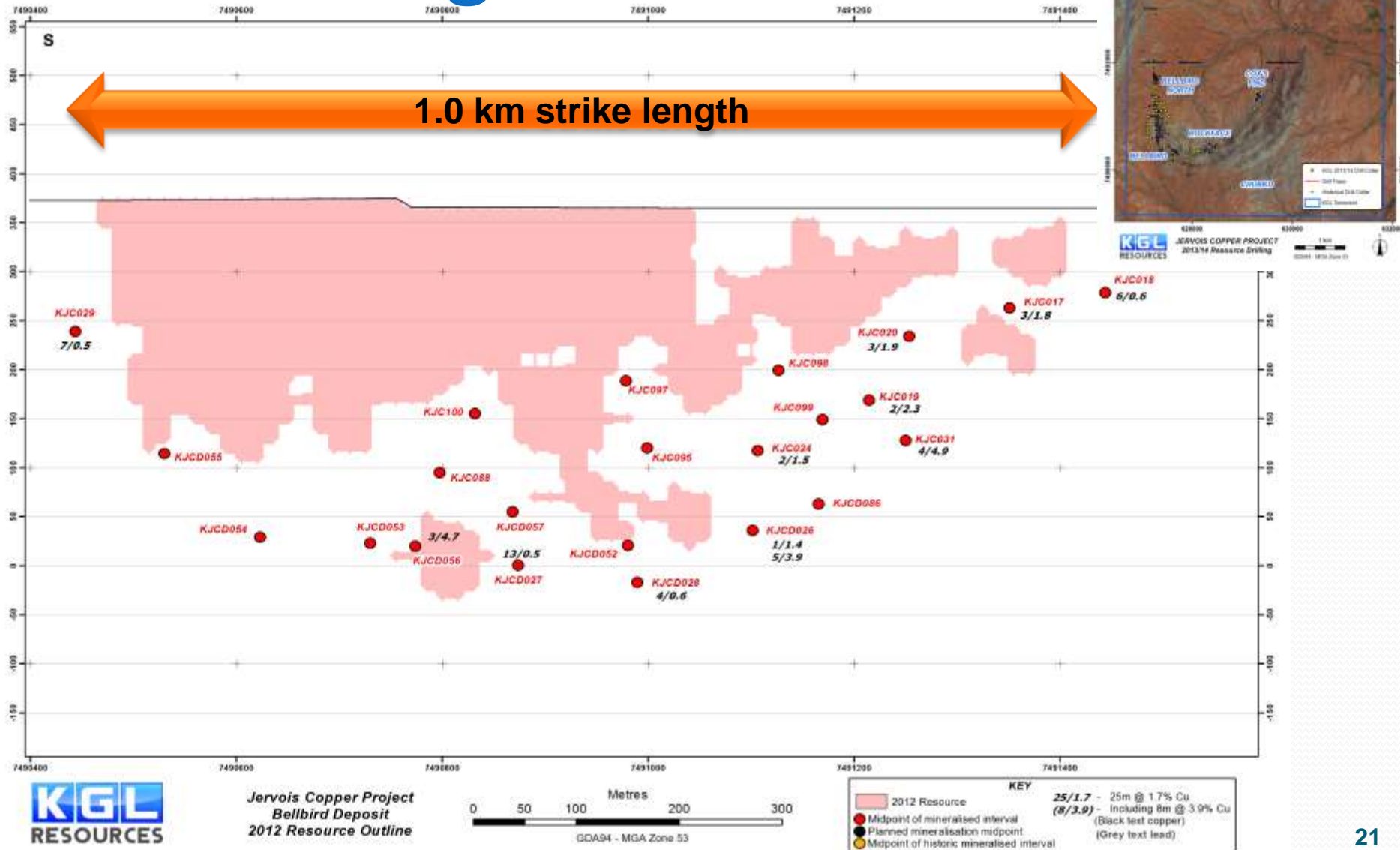


# Electro Magnetic Targets

- EM Survey shows a 500m long conductor running to the north of Reward and East Reward



# Bellbird Long Section



# High Grade Silver – Lead - Zinc

**Hole 48 18m @732 g/t Silver, 19.63% Lead, 3.77% Zinc**

**Hole 45 8m @ 153 g/t Silver, 23.46% Lead, 1.49% Zinc**

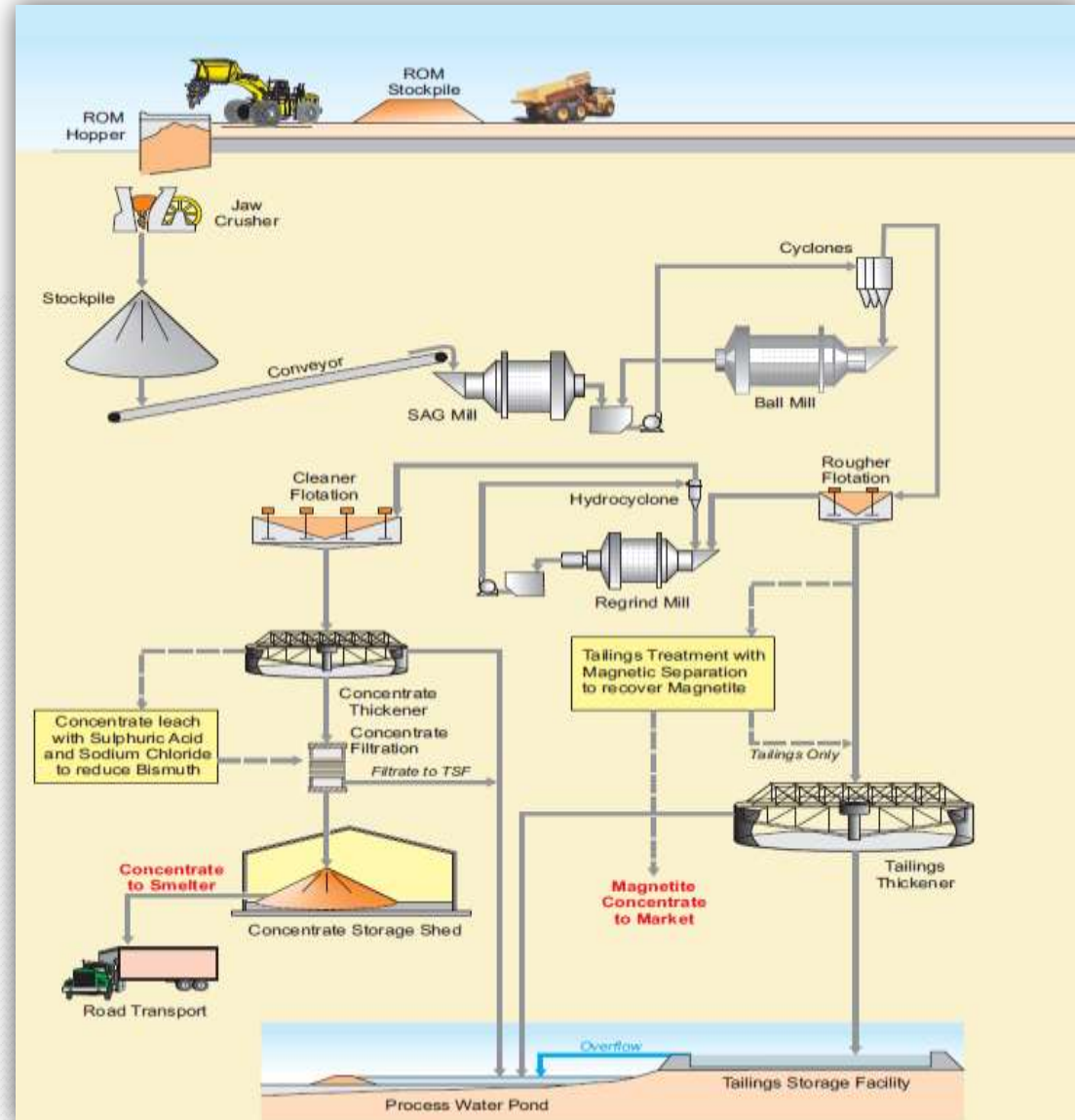


**Massive to semi-massive galena in carbonate and garnet schist**



# Flowchart

- Conventional flotation, followed by de-watering and filtration
- Target production 20,000 to 25,000 tpa of copper in concentrate
- 25% copper concentrate with gold and silver by-product credits



# Copper Oxide Heap Leach

Scoping study to examine options for heap leaching copper oxide





## **Strategy - Partner in Jervois**

- **Larger partner to fund deep drilling and DFS**
- **Partner to earn 30% to 40% Project Equity**
- **KGL Resource to remain majority owner and operator**
- **Partner to contribute to Capital Cost of construction**

# Summary

- High grade Cu-Ag project with mineral resource of 13.5 Mt @ 1.3% Cu, 25.8 g/t Ag and 69,000 oz Au
- Fully funded programs
- 30,000 metres drilling completed
- Resource Upgrade August 2014
- PFS September 2014





# For more information contact

Simon Milroy on +61 7 3071 9003

or [smilroy@kglresources.com](mailto:smilroy@kglresources.com)

or visit [www.kglresources.com](http://www.kglresources.com)

ASX code: KGL

Level 7, 167 Eagle Street

Brisbane, QLD, 4000

AUSTRALIA

## **Forward-Looking Statements:**

This presentation includes certain “Forward-Looking Statements”. All statements, other than statements of historical fact, included herein, including without limitation, statements regarding forecast cash flows and potential mineralisation, resources and reserves, exploration results and future expansion plans and development objectives of KGL Resources are forward-looking statements that involve various risks and uncertainties. There can be no assurance that such statements will prove to be accurate and actual results and future events could differ materially from those anticipated in such statements.

# Competent Person Statement

- The data in this report that relates to Mineral Resource Estimates for Jervois is based on information evaluated by Mr Simon Tear who is a Member of The Australasian Institute of Mining and Metallurgy (MAusIMM) and who has sufficient experience relevant to the style of mineralisation and type of deposit under consideration and to the activity which he is undertaking to qualify as a Competent Person as defined in the 2012 Edition of the Australasian Code for Reporting of Exploration Results, Mineral Resources and Ore Reserves (the “JORC Code”). Mr Tear is a full-time employee of H&S Consultants Pty Ltd and he consents to the inclusion in the report of the Mineral Resource in the form and context in which they appear.
- The exploration data in this report relating to the Jervois project is based on information compiled by Rudy Lennartz, who is a member of the Australian Institute of Mining and Metallurgy and a full time employee of Kentor Minerals (NT) Pty Ltd. Mr. Lennartz has sufficient experience which is relevant to the style of the mineralisation and the type of deposit under consideration and to the activity to which he is undertaking, to qualify as a Competent Person as defined in the 2012 Edition of the Australasian Code for Reporting of Exploration Results, Mineral Resources and Ore Reserves (the “JORC Code”). Mr. Lennartz has consented to the inclusion of this information in the form and context in which it appears in this report.
- The data in this report that relates to Jervois cut off grades and mining assumptions is based on information evaluated by Mr Simon Milroy who is a member of the Australasian Institute of Mining and Metallurgy (MAusIMM) and who has sufficient experience relevant to the style of mineralisation and type of deposit under consideration and to the activity which he is undertaking to qualify as a Competent Person as defined in the 2012 Edition of the Australasian Code for Reporting of Exploration Results, Mineral Resources and Ore Reserves (the “JORC Code”). Mr Milroy is a full-time employee of KGL Resources Limited and he consents to the inclusion in the report of the cut off grades and mining assumptions in the form and context in which they appear



Hole		Date originally Reported	JORC Reported Under
KJC	29	16/06/2014	2012
KJC	56	16/06/2014	2012
KJC	19	16/06/2014	2012
KJC	59	29/05/2014	2012
KJC	39	29/05/2014	2012
KJC	30	29/05/2014	2012
KJC	34	21/03/2014	2012
KJC	48	9/12/2014	2012
KJC	46	29/05/2014	2012
KJC	50	29/05/2014	2012
KJC	45	3/02/2014	2012
KJC	36W1	29/05/2014	2012
KJC	65	29/05/2014	2012
KJC	60	29/05/2014	2012
KJC	32	29/05/2014	2012
RJ	237w	29/05/2014	2012
RJ	169	7/09/2011	2004
KJC	72	29/05/2014	2012
KJC	58	21/03/2014	2012
KJC	43	21/03/2104	2012
KJC	74	29/05/2014	2012
KJC	70	29/05/2014	2012
KJC	64	29/05/2014	2012
KJC	66	29/05/2014	2012
KJC	63	29/05/2014	2012
KJC	69	29/05/2014	2012
KJC	2	8/11/2013	2004
KJC	3	8/11/2013	2004
KJC	4	8/11/2013	2004
KJC	5	8/11/2013	2004
KJC	6	8/11/2013	2004
KJC	10	8/11/2013	2004
KJC	11	8/11/2013	2004
KJC	14	8/11/2013	2004
KJC	15	8/11/2013	2004
KJC	33	8/11/2013	2004
KJC	35	8/11/2013	2004

## Drilling Results Previously Released

The drilling results reported under JORC 2004 have not been updated since to comply with the JORC Code 2012 on the basis that the information has not materially changed since it was last reported.

The Jervois Resources estimate was prepared and first disclosed under the JORC Code 2004 on 7 November 2012. It has not been updated since to comply with the JORC Code 2012 on the basis that the information has not materially changed since it was last reported and all material assumptions and technical parameters underpinning the estimates continue to apply and have not materially changed.